

COPY  
UNITED STATES  
DEPARTMENT OF THE INTERIOR  
GEOLOGICAL SURVEY

30-015-23311

5. LEASE DESIGNATION AND SERIAL NO.

NM-16814

RECEIVED

6. IF INDIAN, ALLOTTEE OR TRIBE NAME

7. UNIT AGREEMENT NAME MAY - 5 1980

8. FARM OR LEASE NAME

Federal AX

O. C. D.  
ARTESIA, OFFICE

9. WELL NO.

1

10. FIELD AND POOL, OR WILDCAT

under  
Brushy Draw Delaware11. SEC., T., R., M., OR BLK.  
AND SURVEY OR AREAU L-M  
18-26-30

12. COUNTY OR PARISH 13. STATE

Eddy

NM

## 1a. TYPE OF WORK

DRILL ☒DEEPEN ☐PLUG BACK ☐

## b. TYPE OF WELL

OIL  
WELL ☒GAS  
WELL ☐

OTHER

SINGLE  
ZONE ☒MULTIPLE  
ZONE ☐

## 2. NAME OF OPERATOR

Amoco Production Company

## 3. ADDRESS OF OPERATOR

P. O. Box 68 Hobbs, NM 88240

## 4. LOCATION OF WELL (Report location clearly and in accordance with any State requirements)

At surface

660' FSL &amp; 560' FWL, Sec. 18

At proposed prod. zone (Unit M, SW/4, SW/4)

## 14. DISTANCE IN MILES AND DIRECTION FROM NEAREST TOWN OR POST OFFICE\*

13 miles south - southeast of Malaga, NM

## 15. DISTANCE FROM PROPOSED\*

LOCATION TO NEAREST  
PROPERTY OR LEASE LINE, FT.  
(Also to nearest drlg. unit line, if any)

## 16. NO. OF ACRES IN LEASE

18. DISTANCE FROM PROPOSED LOCATION\*  
TO NEAREST WELL, DRILLING, COMPLETED,  
OR APPLIED FOR, ON THIS LEASE, FT.

## 19. PROPOSED DEPTH

3500'

17. NO. OF ACRES ASSIGNED  
TO THIS WELL

40

## 20. ROTARY OR CABLE TOOLS

Rotary

## 21. ELEVATIONS (Show whether DF, RT, GR, etc.)

3053.1 GR

## 22. APPROX. DATE WORK WILL START\*

## 23. PROPOSED CASING AND CEMENTING PROGRAM

SIZE OF HOLE	SIZE OF CASING	WEIGHT PER FOOT	SETTING DEPTH	QUANTITY OF CEMENT
12-1/4"	9-5/8"	40#	600'	Circ to surf.
8-3/4"	7"	20#, 23#, or 26#	3500'	Circ to surf.

Propose to drill and equip well in the Delaware zone. After reaching TD logs will be run and evaluated; perforate and/or stimulate as necessary in attempting commercial production.

Mud Program: 0'-600' Native mud and fresh water.  
600'-3500' Commercial mud and brine with minimum properties for safe hole conditions.

BOP Program attached  
Archaeological survey attached

IN ABOVE SPACE DESCRIBE PROPOSED PROGRAM: If proposal is to deepen or plug back, give data on present productive zone and proposed new productive zone. If proposal is to drill or deepen directionally, give pertinent data on subsurface locations and measured and true vertical depths. Give blowout preventer program, if any.

24.

SIGNED

Bob Davis

TITLE Admin. Analyst

DATE 4-16-80

(This space for Federal or State office use)

PERMIT NO.

APPROVAL DATE

4-28-80

APPROVED BY

TITLE

DATE

CONDITIONS OF APPROVAL, IF ANY:

0+5-USGS, A

1-Hou

1-Susp

1-BD

\*See Instructions On Reverse Side

**N<sup>o</sup> MEXICO OIL CONSERVATION COMMISS  
WELL LOCATION AND ACREAGE DEDICATION PLAT**

Form C-102  
Supersedes C-128  
Effective 1-1-65

All distances must be from the outer boundaries of the Section.

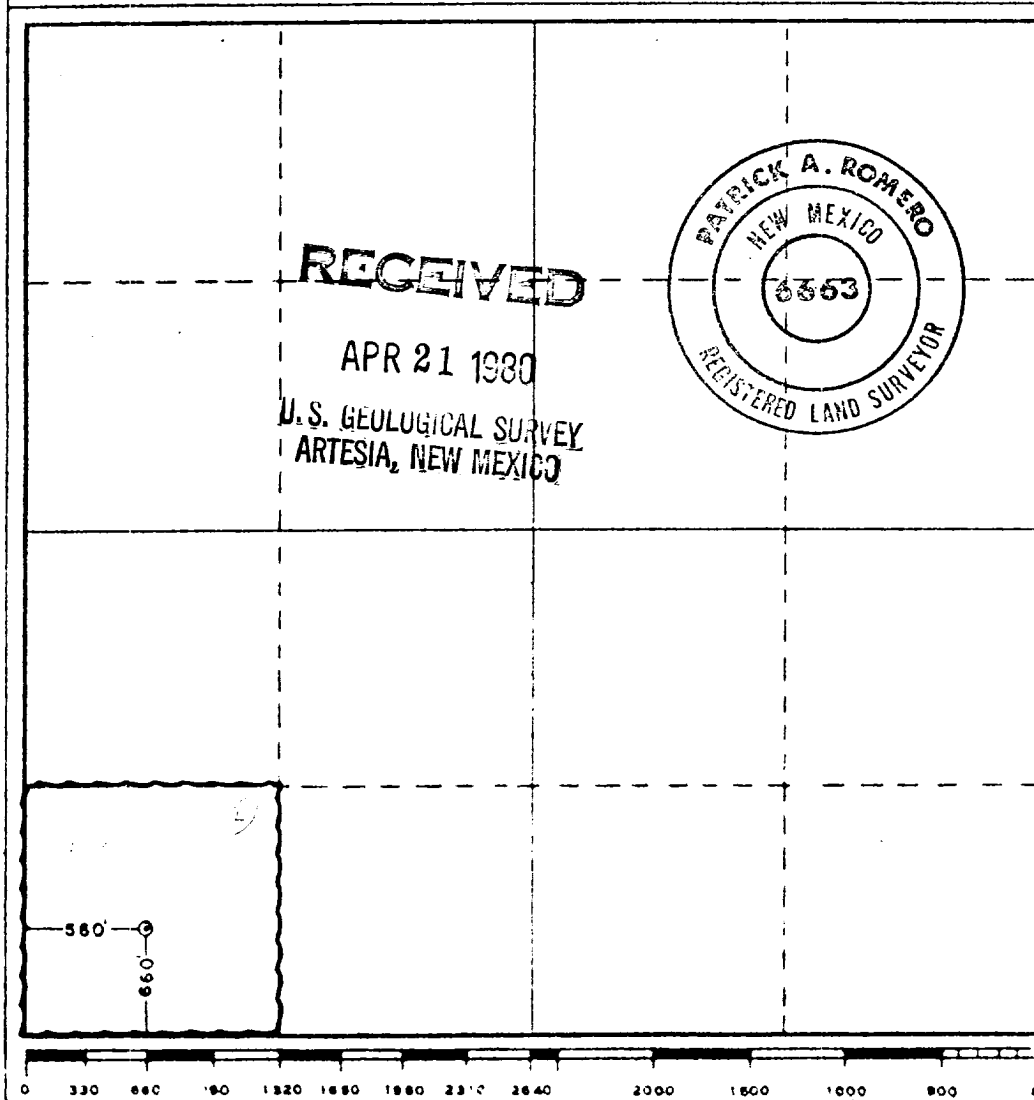
Operator <b>AMOCO Production Co.</b>			Lease <b>Federal AX</b>		Well No. <b>1</b>
Unit Letter <b>M</b>	Section <b>18</b>	Township <b>26 South</b>	Range <b>30 East</b>	County <b>Eddy</b>	
Actual Footage Location of Well: <b>560</b> feet from the <b>West</b> line and <b>660</b> feet from the <b>South</b> line					
Ground Level Elev. <b>3053.1</b>	Producing Formation <b>Delaware</b>		Pool <b>Und</b> <b>Brushy Draw Delaware</b>		Dedicated Acreage: <b>40.77</b> Acres

1. Outline the acreage dedicated to the subject well by colored pencil or hachure mark on the plat below.
2. If more than one lease is dedicated to the well, outline each and identify the ownership thereof (both as to working interest and royalty).
3. If more than one lease of different ownership is dedicated to the well, have the interests of all owners been consolidated by communitization, unitization, force-pooling, etc?

☐ Yes ☐ No If answer is "yes," type of consolidation \_\_\_\_\_

If answer is "no," list the owners and tract descriptions which have actually been consolidated. (Use reverse side of this form if necessary.) \_\_\_\_\_

No allowable will be assigned to the well until all interests have been consolidated (by communitization, unitization, forced-pooling, or otherwise) or until a non-standard unit, eliminating such interests, has been approved by the Commission.



**CERTIFICATION**

I hereby certify that the information contained herein is true and complete to the best of my knowledge and belief.

*Bob Davis*

Name  
Admin. Analyst  
Position  
Amoco Production Company  
Company  
4-16-80  
Date

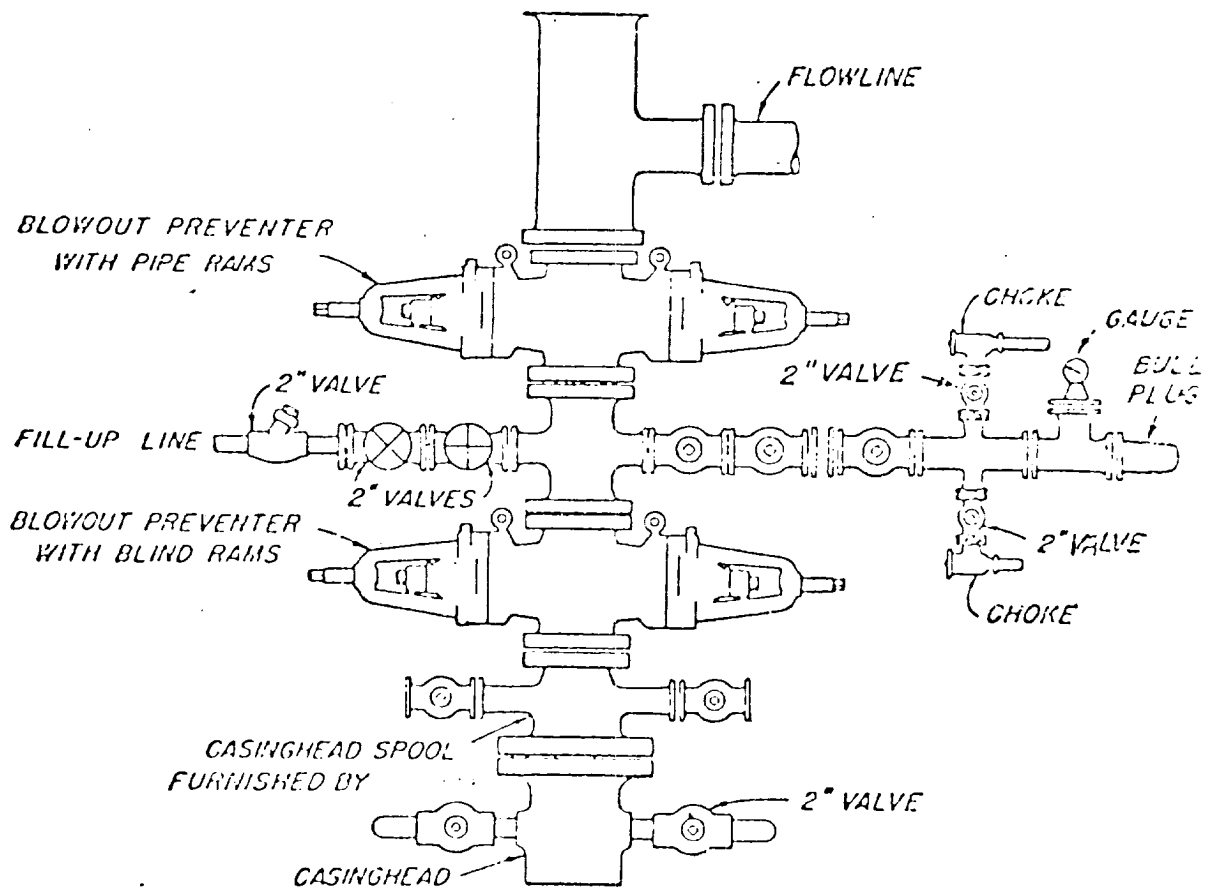
I hereby certify that the well location shown on this plat was plotted from field notes of actual surveys made by me or under my supervision, and that the same is true and correct to the best of my knowledge and belief.

Date Surveyed  
**March 18, 1980**  
Registered Professional Engineer and/or Land Surveyor  
*Patrick A. Romero*  
Certificate No **JOHN W. WEST 676**  
**PATRICK A. ROMERO 6663**  
**Ronald J. Eidson 3239**

ATTACHMENT "B"  
NOTES

1. Blow-out preventers and master valve to be fluid operated and oil fittings must be in good condition, 3,000# W.P. (6,000 p.s.i. test), minimum.
2. Equipment through which bit must pass shall be as large as the inside diameter of the casing that is being drilled through.
3. Nipple above blow-out preventer shall be same size as casing being drilled through.
4. Kelly cock required, 3,000# W.P. (6,000 p.s.i. test) minimum.
5. OMSCO or comparable safety valve must be available on rig floor at all times with proper connection or sub, 3,000# W.P. (6,000 p.s.i. test), minimum.
6. Blow-out preventers and master valve while drilling intermediate hole to 6000' may be 2,000# W.P. (4,000 p.s.i. test), minimum.
7. Choke assembly, beyond second valve from cross, may be positioned (Optional) outside of derrick foundation.
8. Spool or cross may be eliminated if connections are available in the lower part of the blow-out preventer body.
9. Plug valves - gate valves are optional. Valves shown as 2" are minimum size.
10. Casing head and casing head spool, including attached valves, to be furnished by Amoco.
11. Rams in preventers will be installed as follows:  

When drilling, use:	When running casing, use:
Top Preventer - Drill pipe rams	Top Preventer - Casing rams
Bottom Preventer - Blind rams or master valve	Bottom Preventer - Blind rams or master valve



### BLOWOUT PREVENTER HOOK-UP

AMOCO PRODUCTION COMPANY

### EXHIBIT D-1 MODIFIED

JUNE 1, 1962



N.M.C.D. COPY  
United States Department of the Interior

GEOLOGICAL SURVEY  
P. O. Drawer U  
Artesia, New Mexico 88210

RECEIVED  
MAY - 5 1980  
O. C. D.  
ARTESIA, OFFICE

April 28, 1980

Amoco Production Company  
P. O. Box 68  
Hobbs, New Mexico 88240

Gentlemen:

AMOCO PRODUCTION COMPANY Fed "AX" No. 1 660 FSL 560 FWL Sec. 18 T.26S R.30E Eddy County Lease No. NM-16814
---

Above Data Required on Well Sign
----------------------------------

Your APPLICATION FOR PERMIT TO DRILL the above-described well to a depth of 3,500 feet to test the Delaware formation is hereby approved subject to compliance with the OIL AND GAS OPERATING REGULATIONS (30 CFR 221) and the following conditions:

1. Drilling operations authorized are subject to compliance with the GENERAL REQUIREMENTS FOR OIL AND GAS OPERATIONS ON FEDERAL LEASES, dated July 1, 1978.
2. Prior to commencing construction of road, pad, or other associated developments, operator will provide the dirt contractor with a copy of the SURFACE USE PLAN and this approval including the GENERAL REQUIREMENTS.
3. All access roads will be limited to a 12 foot wide driving surface, excluding turnarounds. Surface disturbance associated with road construction will be limited to 20 feet in width.
4. Submit a Daily Report of Operations from spud date until the Well Completion Report (form 9-330) is filed. The progress report should be not less than 8" x 5" in size and each page should identify the well.
5. All permanent above-ground structures and equipment shall be painted in accordance with the attached Painting Requirements. The color used should simulate Sandstone Brown (Federal Standard No. 595A, color 20318 or 30318), or Amoco's standard gray.
6. Notify the Survey by telephone 24 hours prior to spudding well.
7. Cement behind the 9-5/8" casing must be circulated.

8. Special Stipulations:

- a. Prior to construction, fence will be constructed around south and east sides of well pad.
  - b. Carlsbad Area Archaeologist (BLM) must be contacted at least 24 hours prior to construction.
9. Please have anyone contacting the Survey in regard to this well to identify the well with all of the information required above for the well sign.

Sincerely yours,

George H. Stewart  
Acting District Engineer

Attachment to "Application for Permit to Drill", Form 9-331 C

Federal AX #1  
660' FSL & 560' FWL, Sec., 18, T-26-S R-30-E  
Eddy County, New Mexico

1. Location

See attached Form C-102

2. Elevation

See attached Form C-102

3. Geologic name of surface formation.

Permian

4. Type of drilling tools and associated equipment to be utilized.

See Form 9-331 C

5. Proposed drilling depth.

See Form 9-331 C

6. Estimated tops of important geologic markers.

Anhydrite 900'

Delaware Lime 3310'

Delaware Sand 3370'

7. Estimated depths at which anticipated water, oil, gas or other mineral-bearing formations are expected to be encountered.

Delaware Sand 3370'

8. Proposed casing program, including size, grade, and weight of each string and whether it is new or used.

<u>Depth</u>	<u>Size</u>	<u>Weight</u>	<u>Grade</u>	<u>New or Used</u>
660'	9-5/8"	40#	K-55	New
3500'	7"	20#, 23#, or 26#	K-55	New

9. Proposed cementing program.

9-5/8" - Circulate to surface

7" - Circulate to surface

10. Blowout Preventer Program is attached.

11. Type and characteristics of the proposed circulating medium or mediums to be employed for rotary drilling, and the quantities and types of mud and weighting material to be maintained.

0-600' - Native mud and fresh water.

600'-3500' - Commercial mud and brine with minimum properties for safe hole conditions

12. Testing, logging and coring programs to be followed with provisions made for required flexibility.

Compensated Neutron Formation Density Dual Laterolog w/Micro SFL

13. Any anticipated abnormal pressure or temperatures expected to be encountered or potential hazards, such as hydrogen sulfide gas, along with plans for mitigating such hazards.

None anticipated

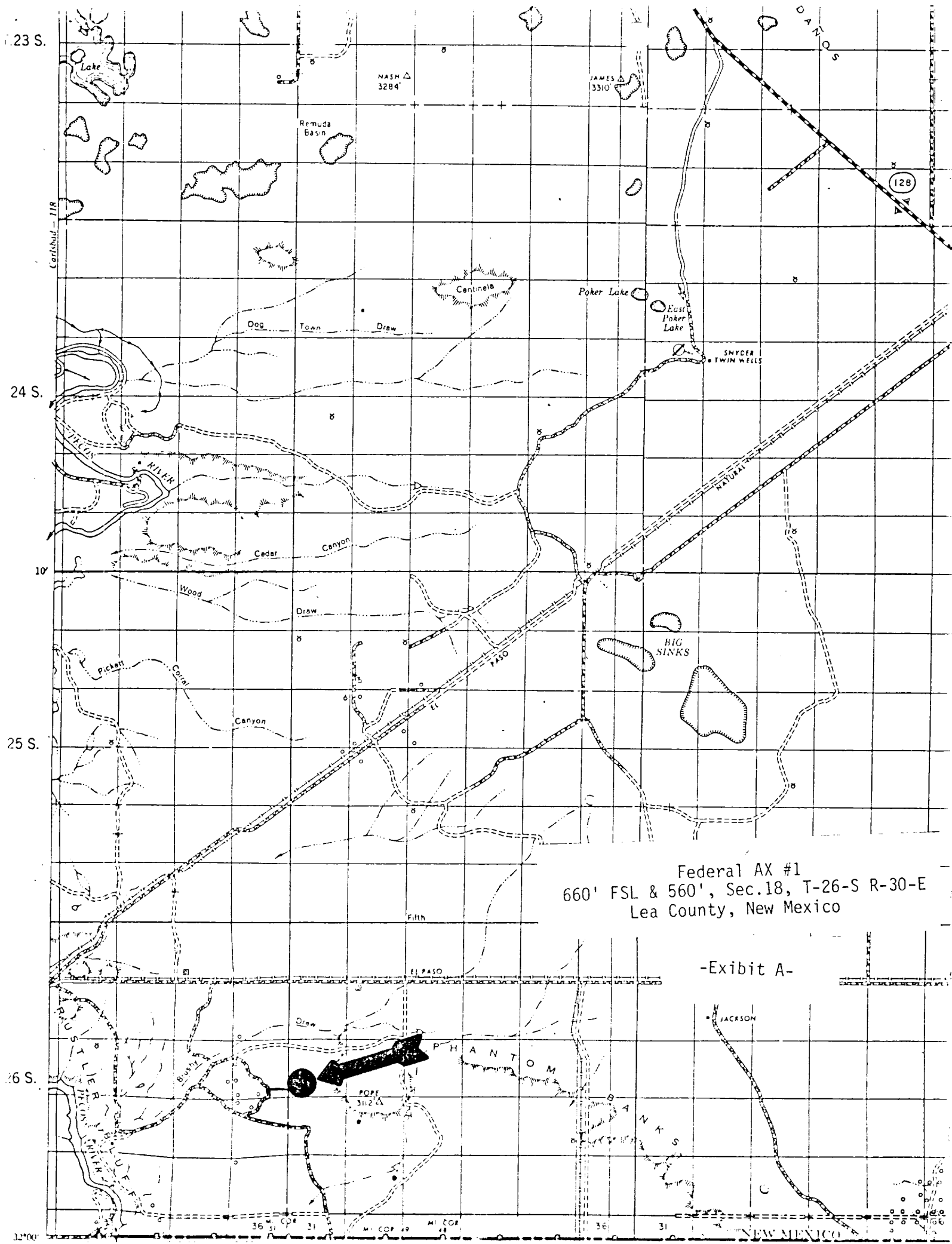
14. Anticipated starting date and duration of operation.

5-1-80

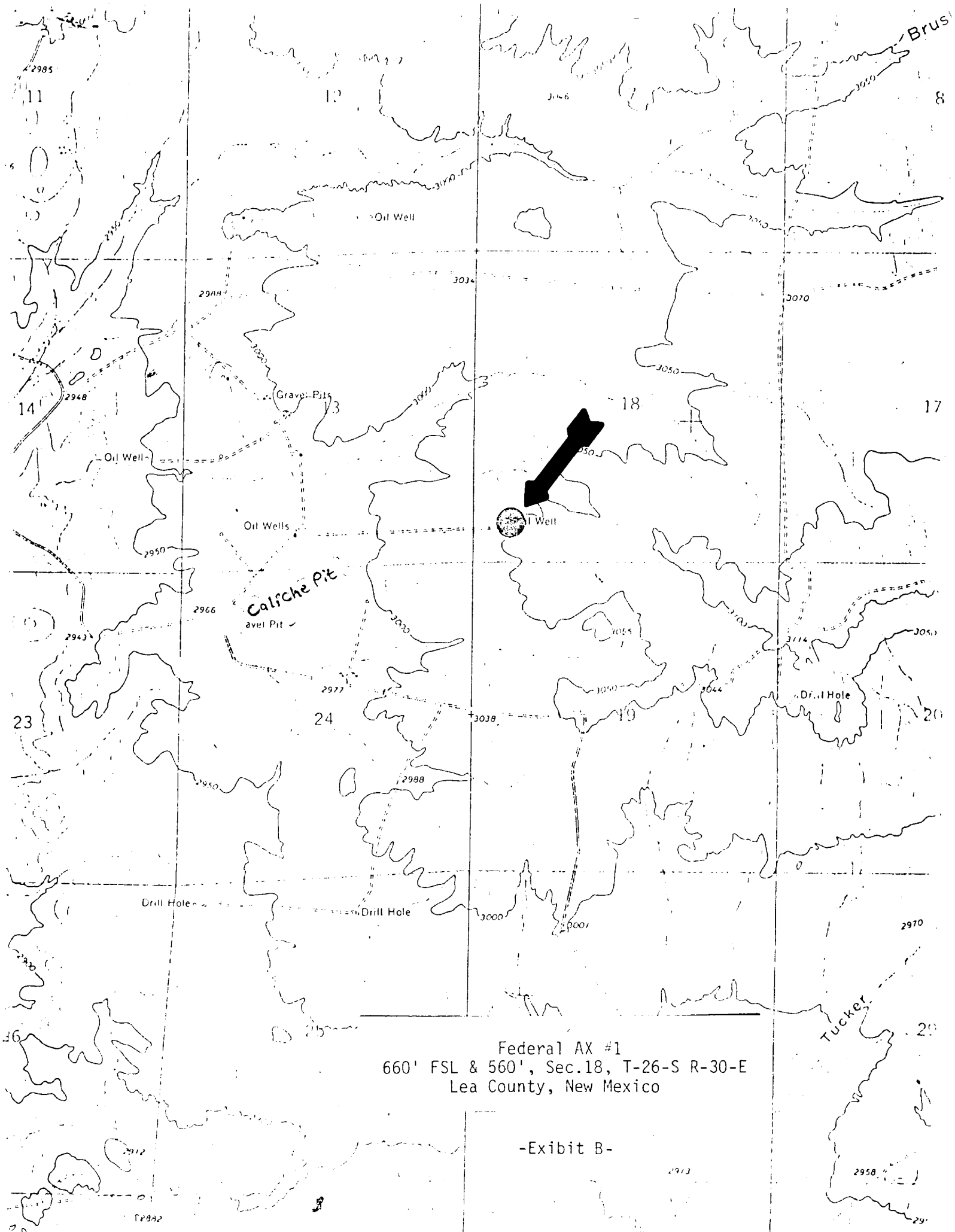
5-25-80

15. Other facets of the proposed operation operator wishes to point out for the Geological Survey's consideration of the application.

Request exemptions from the painting stipulations of Sec. 102 (a) (8) of the "Federal Land Policy and Management Act of 1976" to paint any tanks, separators, and treaters required for the production of this well, Amoco's standard gray color. If a pumping unit is required for the continued production of this well, it will be painted black with orange safety color coding which conforms with your current painting guidelines.







Federal AX #1  
660' FSL & 560', Sec.18, T-26-S R-30-E  
Lea County, New Mexico

-Exhibit B-

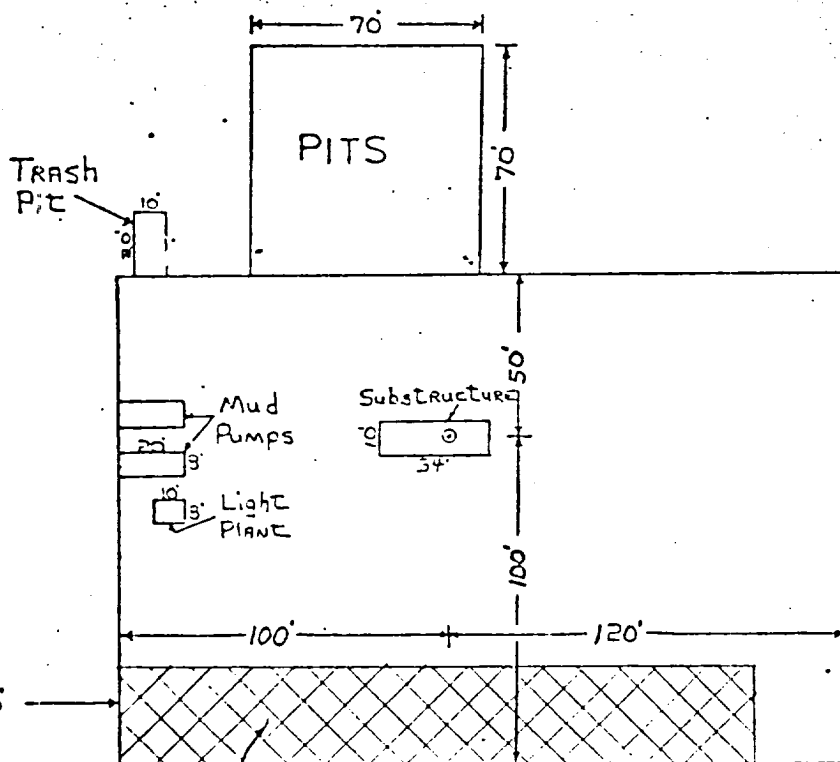
# DRILL SITE DIMENSIONS

LESS THAN 8,000'

450'

450'

N



12' Wide Road

Federal AX #1  
660' FSL & 560', Sec.18, T-26-S R-30-E  
Lea County, New Mexico

-Exhibit D-