

RECEIVED

NEW MEXICO OIL CONSERVATION COMMISSION
WELL LOCATION AND ACREAGE DEDICATION PLAT APR 17 1981

Form C-102
Supersedes C-128
Effective 1-1-65

All distances must be from the outer boundaries of the Section.

Operator Adams Exploration Company			Lease SRC State		ARTESIA, OFFICE		Well No. 1-Y
Unit Letter 0	Section 16	Township 26-S	Range 30-E	County Eddy			
Actual Footage Location of Well: 660 feet from the South line and 1990 feet from the East line							
Ground Level Elev. 3056	Producing Formation Wolfcamp		Pool Wildcat Wolfcamp			Dedicated Acreage: 320 Acres	

1. Outline the acreage dedicated to the subject well by colored pencil or hachure marks on the plat below.

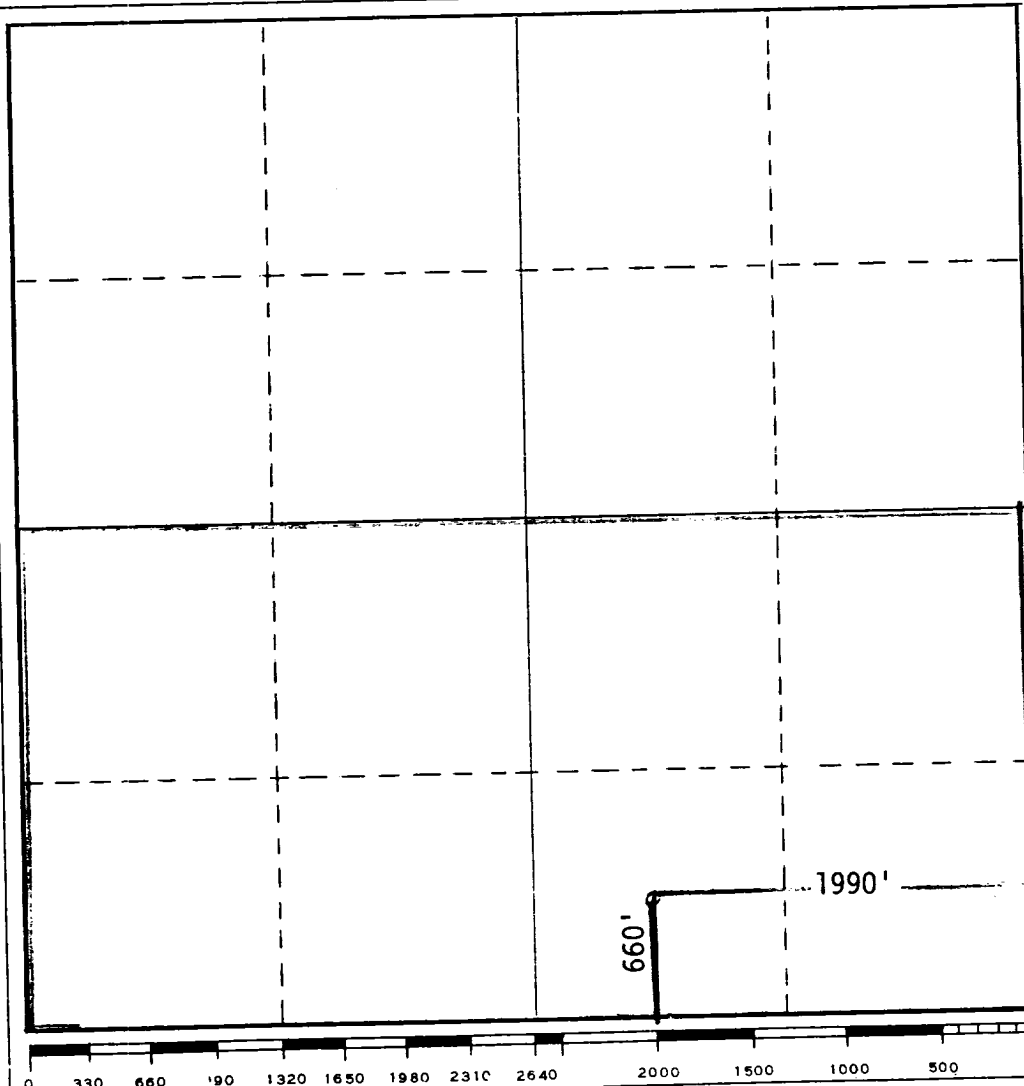
2. If more than one lease is dedicated to the well, outline each and identify the ownership thereof (both as to working interest and royalty).

3. If more than one lease of different ownership is dedicated to the well, have the interests of all owners been consolidated by communitization, unitization, force-pooling, etc?

☐ Yes ☐ No If answer is "yes," type of consolidation _____

If answer is "no," list the owners and tract descriptions which have actually been consolidated. (Use reverse side of this form if necessary.) _____

No allowable will be assigned to the well until all interests have been consolidated (by communitization, unitization, forced-pooling, or otherwise) or until a non-standard unit, eliminating such interests, has been approved by the Commission.



CERTIFICATION

I hereby certify that the information contained herein is true and complete to the best of my knowledge and belief.

D. C. Helm

Name

D. C. Helm

Position

Operations Manager

Company

Adams Exploration Company

Date

4-15-81

I hereby certify that the well location shown on this plat was plotted from field notes of actual surveys made by me or under my supervision, and that the same is true and correct to the best of my knowledge and belief.

Date Surveyed

March 5, 1980

Registered Professional Engineer
and/or Land Surveyor

by: **John W. West**

Certificate No.