

COPIES RECEIVED 3

DISTRIBUTION

SANTA FE 1

FILE 1

U.S.G.S.

LAND OFFICE

OPERATOR 1

NEW MEXICO OIL CONSERVATION COMMISSION RECEIVED

JAN 27 1982

O. C. D.
ARTESIA, OFFICE

Form O-101
Revised 10-77

5A. Indicate Type of Lease

STATE ☐ FEDERAL ☒

5. Title Oil & Gas Lease

APPLICATION FOR PERMIT TO DRILL, DEEPEN, OR PLUG BACK

1a. Type of Work

DRILL ☒ DEEPEN ☐ PLUG BACK ☐

b. Type of Well

OIL WELL ☐ GAS WELL ☐ Stratigraphic Test Hole ☐ SINGLE ZONE ☐ MULTIPLE ZONE ☐

2. Name of Operator

Cibola Energy Corporation

3. Address of Operator

P.O. Box 1668, Albuquerque, New Mexico 87103

4. Location of Well

UNIT LETTER H LOCATED 1980 FEET FROM THE North LINE

AND 660 FEET FROM THE East LINE OF SEC. 35 TWP. 9S RGE. 27E NMPM

7. Unit Agreement Name

8. Name of Lease State

Cibola

9. Well No.

8-H

10. Field and Pool, or Acreage

N/A

12. County

Chaves

13. Proposed Depth

13A. Formation

13B. Rotary or C.C.T.

Rotary

14. Elevations, Show whether DF, HI, etc.

14A. Kind & Status Plus. Bond

Statewide

14B. Drilling Contractor

Harry Bevers

22. Approx. Date Work will start

1-27-82

23.

PROPOSED CASING AND CEMENT PROGRAM

SIZE OF HOLE	SIZE OF CASING	WEIGHT PER FOOT	SETTING DEPTH	SACKS OF CEMENT	EST. TOP
4 1/2"	N/A	N/A	N/A	N/A	N/A

We plan to drill a 4 1/2" hole 20' into Yates formation. A Gamma Ray log will be run to determine the top of the Yates. A suitable cement plug will be pumped into the hole to plug from TD to the top of the water zone. Location will be cleaned and marker set.

THIS WELL IS BEING DRILLED AS A STRATIGRAPHIC TEST HOLE FOR GEOLOGICAL INFORMATION ONLY AND UNDER NO CIRCUMSTANCES WILL IT BE PRODUCED.

IN ABOVE SPACE DESCRIBE PROPOSED PROGRAM: IF PROPOSAL IS TO DEEPEN OR PLUG BACK, GIVE DATA ON PRESENT PRODUCTIVE ZONE AND PROPOSED NEW PRODUCTIVE ZONE. GIVE BLOWOUT PREVENTER PROGRAM, IF ANY.

I hereby certify that the information above is true and complete to the best of my knowledge and belief.

Signed Conita Vigil Title Drilling Secretary Date 1-25-82

(This space for State Use)

APPROVED BY M. Williams TITLE OIL AND GAS INSPECTOR DATE JAN 29 1982

CONDITIONS OF APPROVAL, IF ANY:

**N MEXICO OIL CONSERVATION COMMISSION
WELL LOCATION AND ACREAGE DEDICATION PLAT**

Form C-102
Supersedes C-128
Effective 1-1-65

All distances must be from the outer boundaries of the Section.

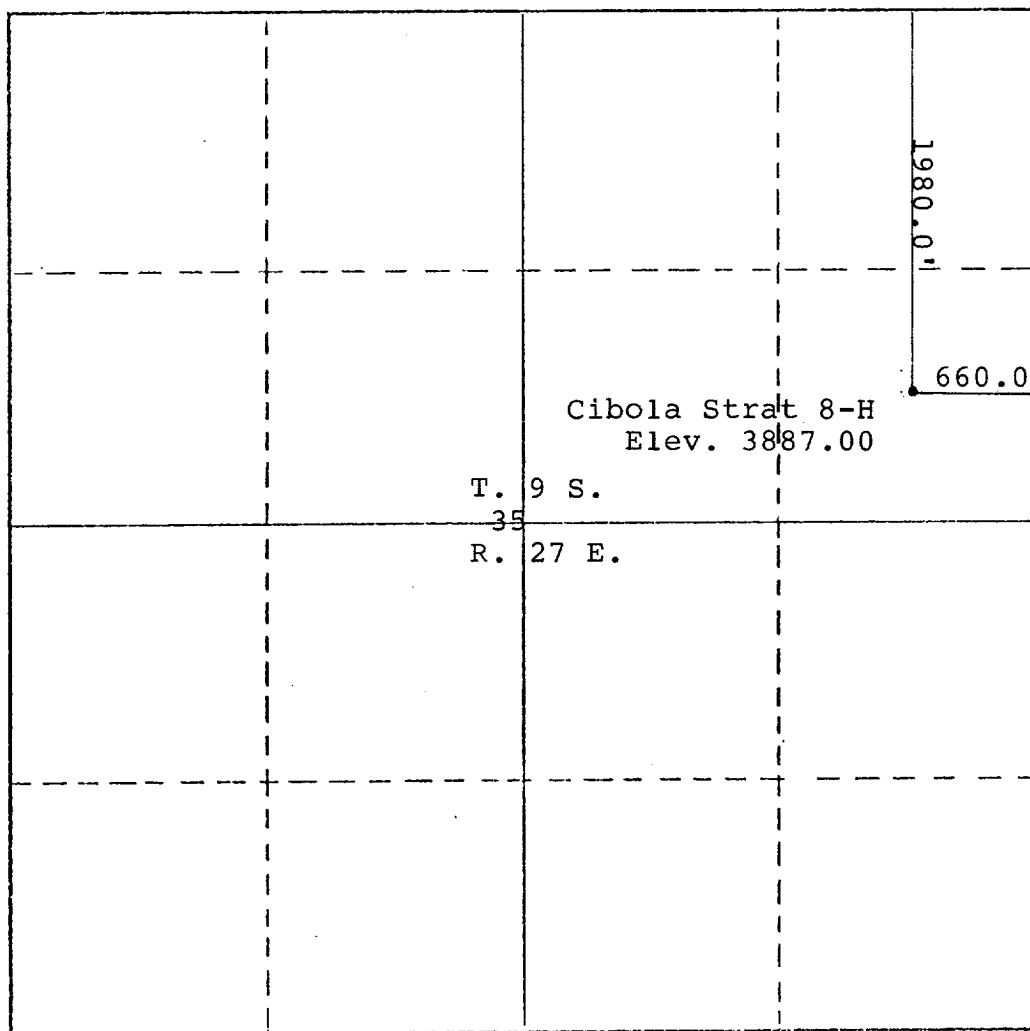
Operator Cibola Energy			Lease Cibola Strat Test			Well No. Cibola 8-H		
Unit Letter H	Section 35	Township 9 South	Range 27 East	County Chaves				
Actual Postage Location of Well: <div style="display: flex; justify-content: space-between;"> 1980.0 feet from the north line and 1980.0 feet from the east line </div>								
Ground Level Elev. 3887.00		Producing Formation			Pool		Dedicated Acreage: FEB 18 1982	

1. Outline the acreage dedicated to the subject well by colored pencil or hachure marks on the plat below.
2. If more than one lease is dedicated to the well, outline each and identify the ownership thereof (both as to working interest and royalty).
3. If more than one lease of different ownership is dedicated to the well, have the interests of all owners been consolidated by communitization, unitization, force-pooling, etc?

☐ Yes ☐ No If answer is "yes," type of consolidation _____

If answer is "no," list the owners and tract descriptions which have actually been consolidated. (Use reverse side of this form if necessary.) _____

No allowable will be assigned to the well until all interests have been consolidated (by communitization, unitization, forced-pooling, or otherwise) or until a non-standard unit, eliminating such interests, has been approved by the Commission.



CERTIFICATION

I hereby certify that the information contained herein is true and complete to the best of my knowledge and belief.

Name **R. B. Wright**
 Position **Agent**
 Company **Cibola Energy Corp.**
 Date **2/17/82**

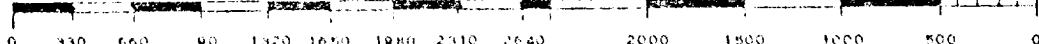
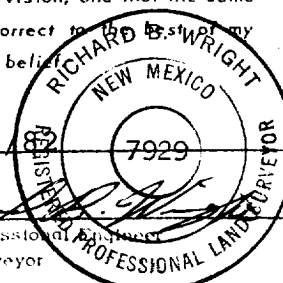
I hereby certify that the well location shown on this plat was plotted from field notes of actual surveys made by me or under my supervision, and that the same is true and correct to the best of my knowledge and belief.

Date Surveyed **2/17/82**
 Registered Professional Engineer and/or Land Surveyor

Richard B. Wright

Certificate No.

7929



**N - MEXICO OIL CONSERVATION COMMISSION
WELL LOCATION AND ACREAGE DEDICATION LAT**

Form C-102
Supersedes C-128
Effective 1-1-65

All distances must be from the outer boundaries of the Section.

Operator Cibola Energy		Lease Cibola Strat Test		Well No. Cibola 8-H
Unit Letter H	Section 35	Township 9 South	Range 27 East	County Chaves

RECEIVED

Actual Postage Location of Well:

1980.0 feet from the north line and	1980.0 feet from the east line
Ground Level Elev. 3887.00	Producing Formation
Pool 	Dedicated to

FEB 18 1982

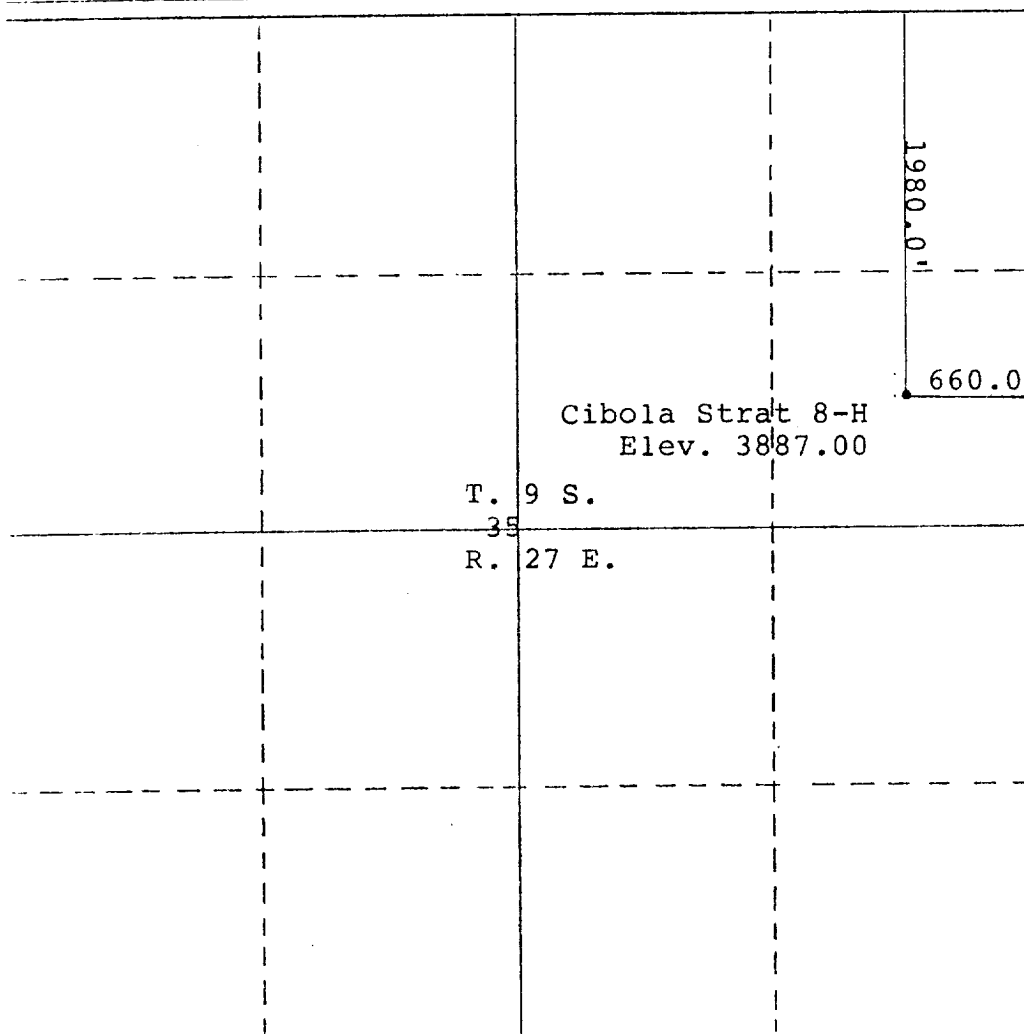
**O. C. D.
ARTESIA, OFFICE**

1. Outline the acreage dedicated to the subject well by colored pencil or hatchure marks on the plat below.
2. If more than one lease is dedicated to the well, outline each and identify the ownership thereof (both as to working interest and royalty).
3. If more than one lease of different ownership is dedicated to the well, have the interests of all owners been consolidated by communitization, unitization, force-pooling, etc?

☐ Yes ☐ No If answer is "yes," type of consolidation _____

If answer is "no," list the owners and tract descriptions which have actually been consolidated. (Use reverse side of this form if necessary.) _____

No allowable will be assigned to the well until all interests have been consolidated (by communitization, unitization, forced-pooling, or otherwise) or until a non-standard unit, eliminating such interests, has been approved by the Commission.



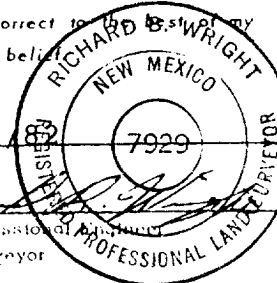
CERTIFICATION

I hereby certify that the information contained herein is true and complete to the best of my knowledge and belief.

Name _____
R. B. Wright
 Position _____
Agent
 Company _____
Cibola Energy Corp.
 Date _____
2/17/82

I hereby certify that the well location shown on this plat was plotted from field notes of actual surveys made by me or under my supervision, and that the same is true and correct to the best of my knowledge and belief.

Date Surveyed _____
2/17/82
 Registered Professional Engineer and/or Land Surveyor



Richard B. Wright

Certificate No.

7929

330 660 990 1320 1650 1980 2310 2640 2970 3300 3630 3960 4290 4620 4950 5280 5610 5940 6270 6600

**N MEXICO OIL CONSERVATION COMMISSION
WELL LOCATION AND ACREAGE DEDICATION PLAT**

Form C-102
Supersedes C-128
Effective 1-1-65

All distances must be from the outer boundaries of the Section.

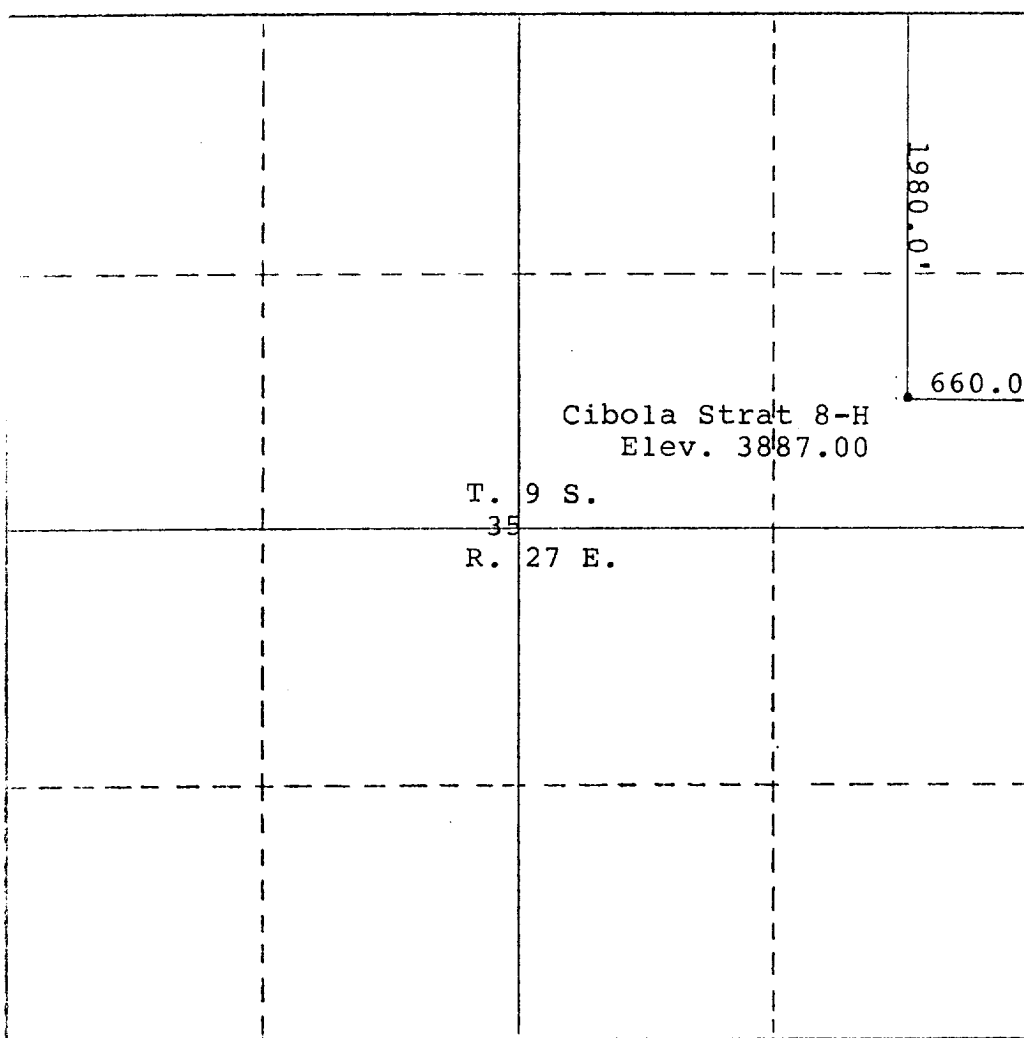
Operator Cibola Energy			Lease Cibola Strat Test			Well No. Cibola 8-H		
Init Letter H	Section 35	Township 9 South	Range 27 East	County Chaves		RECEIVED FEB 18 1982 O. C. D. ARTESIA, OFFICE		
Initial Footage Location of Well: <div style="display: flex; justify-content: space-between;"> 1980.0 feet from the north line and 1980.0 feet from the east line </div>								
Ground Level Elev. 3887.00		Producing Formation		Pool		Dedicated Acreage		

1. Outline the acreage dedicated to the subject well by colored pencil or hachure marks on the plat below.
2. If more than one lease is dedicated to the well, outline each and identify the ownership thereof (both as to working interest and royalty).
3. If more than one lease of different ownership is dedicated to the well, have the interests of all owners been consolidated by communitization, unitization, force-pooling, etc?

☐ Yes ☐ No If answer is "yes," type of consolidation _____

If answer is "no," list the owners and tract descriptions which have actually been consolidated. (Use reverse side of this form if necessary.) _____

No allowable will be assigned to the well until all interests have been consolidated (by communitization, unitization, forced-pooling, or otherwise) or until a non-standard unit, eliminating such interests, has been approved by the Commission.



CERTIFICATION

I hereby certify that the information contained herein is true and complete to the best of my knowledge and belief.

Name R. B. Wright
 Position Agent
 Company Cibola Energy Corp.
 Date 2/17/82

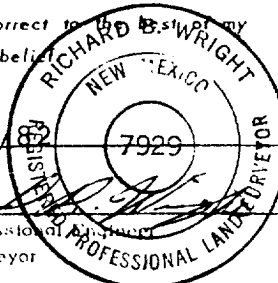
I hereby certify that the well location shown on this plat was plotted from field notes of actual surveys made by me or under my supervision, and that the same is true and correct to the best of my knowledge and belief.

Date Surveyed 2/17/82
 Registered Professional Engineer and/or Land Surveyor

Richard B. Wright

Certificate No.

7929



N MEXICO OIL CONSERVATION COMMISSION
WELL LOCATION AND ACREAGE DEDICATION LAT

Form C-102
 Supersedes C-128
 Effective 1-1-65

All distances must be from the outer boundaries of the Section.

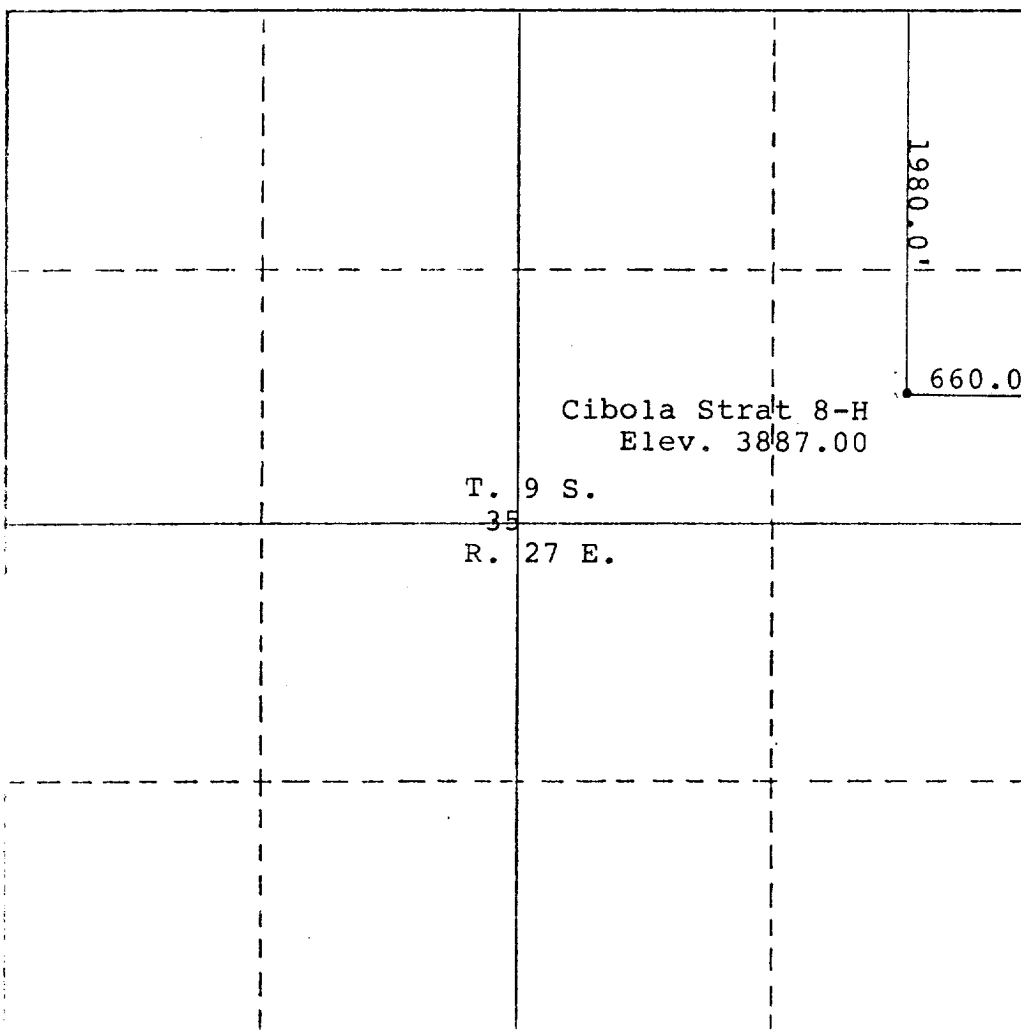
Operator Cibola Energy			Lease Cibola Strat Test			Well No. Cibola 8-H
Unit Letter H	Section 35	Township 9 South	Range 27 East	County Chaves		RECEIVED
Original Postage Location of Well: 1980.0 feet from the north line and 1980.0 feet from the east line FEB 18 1982						
Ground Level Elev. 3887.00	Producing Formation		Pool		Dedicated Acreage O. C. D.	

1. Outline the acreage dedicated to the subject well by colored pencil or hatchure marks on the plat below.
2. If more than one lease is dedicated to the well, outline each and identify the ownership thereof (both as to working interest and royalty).
3. If more than one lease of different ownership is dedicated to the well, have the interests of all owners been consolidated by communitization, unitization, force-pooling, etc?

☐ Yes ☐ No If answer is "yes," type of consolidation _____

If answer is "no," list the owners and tract descriptions which have actually been consolidated. (Use reverse side of this form if necessary.) _____

No allowable will be assigned to the well until all interests have been consolidated (by communitization, unitization, forced-pooling, or otherwise) or until a non-standard unit, eliminating such interests, has been approved by the Commission.



CERTIFICATION

I hereby certify that the information contained herein is true and complete to the best of my knowledge and belief.

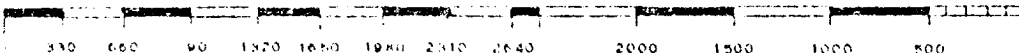
Name **R. B. Wright**
 Position **Agent**
 Company **Cibola Energy Corp.**
 Date **2/17/82**

I hereby certify that the well location shown on this plat was plotted from field notes of actual surveys made by me or under my supervision, and that the same is true and correct to the best of my knowledge and belief.

Date Surveyed **2/17/82**
 Registered Professional Engineer and/or Land Surveyor

Richard B. Wright

Certificate No.
7929



**N MEXICO OIL CONSERVATION COMMISSION
WELL LOCATION AND ACREAGE DEDICATION LAT**

Form C-102
Supersedes C-128
Effective 1-1-65

All distances must be from the outer boundaries of the Section.

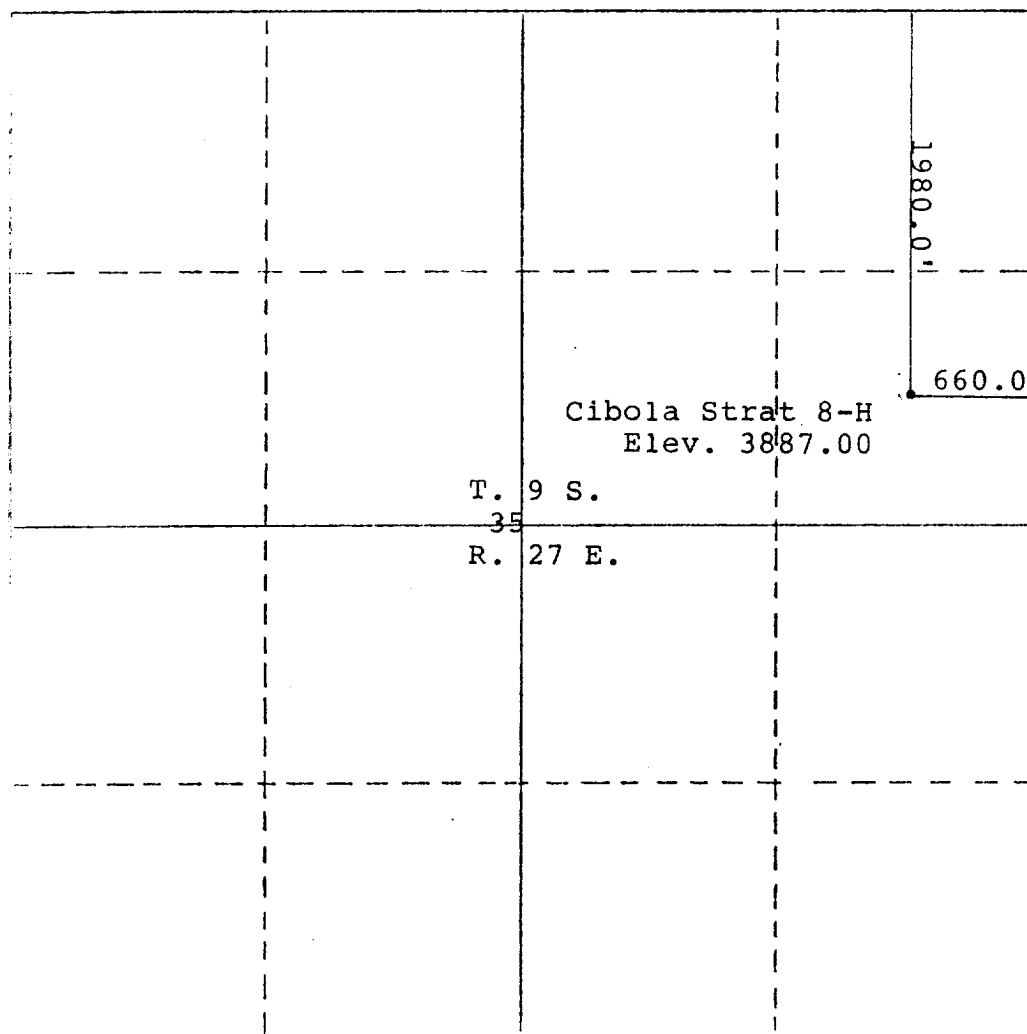
Operator Cibola Energy			Lease Cibola Strat Test			Well No. Cibola 8-H		
Unit Letter H	Section 35	Township 9 South	Range 27 East	County Chaves				
Actual Footage Location of Well: <div style="display: flex; justify-content: space-between;"> 1980.0 feet from the north line and 1980.0 feet from the east </div>								
Ground Level Elev. 3887.00		Producing Formation		Pool		Dedicated to Service FEB 18 1982		

1. Outline the acreage dedicated to the subject well by colored pencil or hachure marks on the plat below.
2. If more than one lease is dedicated to the well, outline each and identify the ownership thereof (both as to working interest and royalty).
3. If more than one lease of different ownership is dedicated to the well, have the interests of all owners been consolidated by communitization, unitization, force-pooling, etc?

☐ Yes ☐ No If answer is "yes," type of consolidation _____

If answer is "no," list the owners and tract descriptions which have actually been consolidated. (Use reverse side of this form if necessary.) _____

No allowable will be assigned to the well until all interests have been consolidated (by communitization, unitization, forced-pooling, or otherwise) or until a non-standard unit, eliminating such interests, has been approved by the Commission.



CERTIFICATION

I hereby certify that the information contained herein is true and complete to the best of my knowledge and belief.

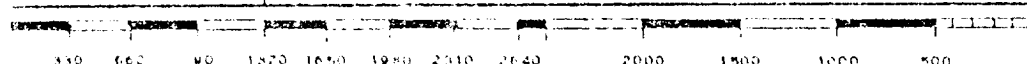
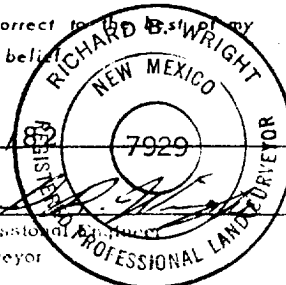
Name **R. B. Wright**
 Position **Agent**
 Company **Cibola Energy Corp.**
 Date **2/17/82**

I hereby certify that the well location shown on this plat was plotted from field notes of actual surveys made by me or under my supervision, and that the same is true and correct to the best of my knowledge and belief.

Date Surveyed **2/17/82**
 Registered Professional Engineer and/or Land Surveyor

Richard B. Wright

Certificate No.
7929



NEW MEXICO OIL CONSERVATION COMMISSION
WELL LOCATION AND ACREAGE DEDICATION LAT

Form C-102
Supersedes C-128
Effective 1-1-65

All distances must be from the outer boundaries of the Section.

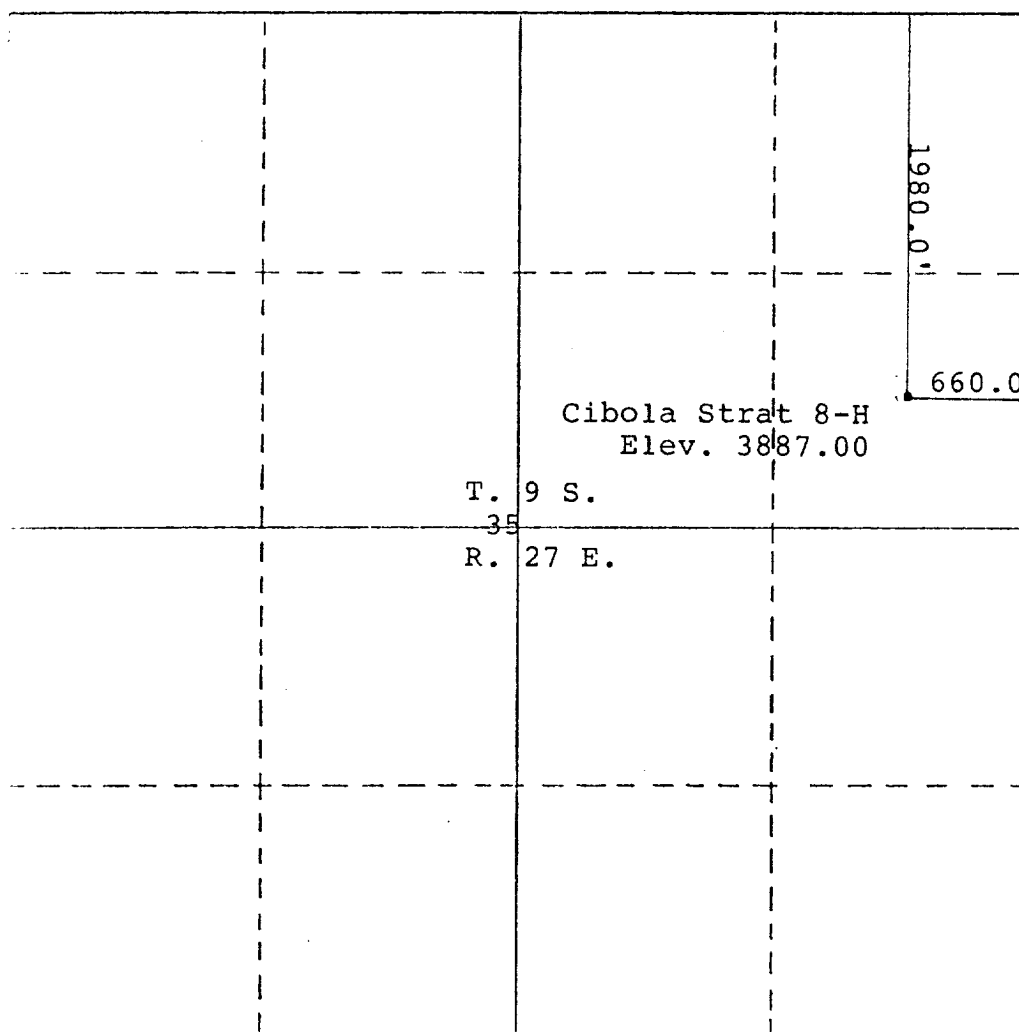
Operator Cibola Energy			Lease Cibola Strat Test			Well No. Cibola 8-H
Unit Letter H	Section 35	Township 9 South	Range 27 East	County Chaves		RECEIVED
Actual Footage Location of Well: 1980.0 feet from the north line and 1980.0 feet from the east line Ground Level Elev. 3887.00 Producing Formation _____ Pool _____ Dedicated Acreage: O. C. D.						

1. Outline the acreage dedicated to the subject well by colored pencil or hachure marks on the plat below.
2. If more than one lease is dedicated to the well, outline each and identify the ownership thereof (both as to working interest and royalty).
3. If more than one lease of different ownership is dedicated to the well, have the interests of all owners been consolidated by communitization, unitization, force-pooling, etc?

☐ Yes ☐ No If answer is "yes," type of consolidation _____

If answer is "no," list the owners and tract descriptions which have actually been consolidated. (Use reverse side of this form if necessary.) _____

No allowable will be assigned to the well until all interests have been consolidated (by communitization, unitization, forced-pooling, or otherwise) or until a non-standard unit, eliminating such interests, has been approved by the Commission.



CERTIFICATION

I hereby certify that the information contained herein is true and complete to the best of my knowledge and belief.

Name *R. B. Wright*
 Position Agent
 Company Cibola Energy Corp.
 Date 2/17/82

I hereby certify that the well location shown on this plat was plotted from field notes of actual surveys made by me or under my supervision, and that the same is true and correct to the best of my knowledge and belief.

Date Surveyed 2/17/82
 Registered Professional Engineer and/or Land Surveyor



Richard B. Wright
 Certificate No. **7929**