

UNITED STATES  
DEPARTMENT OF THE INTERIOR  
GEOLOGICAL SURVEY(Other instru s on  
reverse 8.)

30-005-60484

## APPLICATION FOR PERMIT TO DRILL, DEEPEN, OR PLUG BACK

1a. TYPE OF WORK DRILL <input checked="" type="checkbox"/> DEEPEN <input type="checkbox"/> PLUG BACK <input type="checkbox"/>			5. LEASE DESIGNATION AND SERIAL NO. NM-XXXXXX NM-16326		
b. TYPE OF WELL OIL WELL <input checked="" type="checkbox"/> GAS WELL <input type="checkbox"/> OTHER <input type="checkbox"/> SINGLE ZONE <input type="checkbox"/> MULTIPLE ZONE <input type="checkbox"/>			6. IF INDIAN, ALLOTTEE OR TRIBE NAME		
2. NAME OF OPERATOR MOUNTAIN STATES PETROLEUM CORPORATION			7. UNIT AGREEMENT NAME		
3. ADDRESS OF OPERATOR P.O. Box 1936 Roswell, NM 88201			8. FARM OR LEASE NAME Bell Federal		
4. LOCATION OF WELL (Report location clearly and in accordance with any State requirements*) At surface 1650' FNL & 2310' FEL At proposed prod. zone same			9. WELL NO. 1		
14. DISTANCE IN MILES AND DIRECTION FROM NEAREST TOWN OR POST OFFICE* Hagerman, NM located 8 miles SW			10. FIELD AND POOL, OR WILDCAT Wildcat		
15. DISTANCE FROM PROPOSED* LOCATION TO NEAREST PROPERTY OR LEASE LINE, FT. (Also to nearest drig. unit line, if any) 330			11. SEC., T., R., M., OR BLE. AND SURVEY OR AREA 26, T13S-R27E		
18. DISTANCE FROM PROPOSED LOCATION* TO NEAREST WELL, DRILLING, COMPLETED, OR APPLIED FOR, ON THIS LEASE, FT. 9500' SW P&A			12. COUNTY OR PARISH Chaves		
16. NO. OF ACRES IN LEASE 1160			13. STATE NM		
19. PROPOSED DEPTH 2350			17. NO. OF ACRES ASSIGNED TO THIS WELL 40		
20. ROTARY OR CABLE TOOLS Rotary and Cable Tools			22. APPROX. DATE WORK WILL START* 11/26/77		
21. ELEVATIONS (Show whether DF, RT, GR, etc.) 3563 GL					

## 23. PROPOSED CASING AND CEMENTING PROGRAM

SIZE OF HOLE	SIZE OF CASING	WEIGHT PER FOOT	SETTING DEPTH	QUANTITY OF CEMENT
11	8-5/8	24	175	Circulate
7-7/8	5-1/2	14	2000	100 sxs

After setting 8-5/8" surface casing, Contractor will install control head (no gas or high pressure encountered in nearby cable tool hole). Drill with native mud and water to approximately 2000' and run and cement 5-1/2" casing. Move off rotary and move on cable tools. Drill San Andres pay interval with cable tools and complete open hole. If no commercial production encountered, pull free 5-1/2" casing and plug hole according to USGS requirements. If commercial production found, complete well, stimulate with acid as necessary, construct production facilities and produce.

RECEIVED

NOV 25 1977

U.S. GEOLOGICAL SURVEY  
ARTESIA, NEW MEXICO

IN ABOVE SPACE DESCRIBE PROPOSED PROGRAM: If proposal is to deepen or plug back, give data on present production and proposed new productive zone. If proposal is to drill or deepen directionally, give pertinent data on subsurface locations and measured and true vertical depths. Give blowout preventer program, if any.

24. SIGNED KCH TITLE Geologist DATE 11/23/77

(This space for Federal or State office use)

PERMIT NO. \_\_\_\_\_ APPROVAL DATE JAN 24 1978

APPROVED BY Lee J. Lara TITLE ACTING DISTRICT ENGINEER DATE JAN 24 1978  
CONDITIONS OF APPROVAL, IF ANY:

THIS APPROVAL IS RESCINDED IF OPERATIONS  
ARE NOT COMMENCED WITHIN 3 MONTHS.  
EXPIRES APR 24 1978

\*See Instructions On Reverse Side

NEW MEXICO OIL CONSERVATION COMMISSION  
WELL LOCATION AND ACREAGE DEDICATION PLAT

Form C-102  
Supersedes C-128  
Effective 1-1-65

All distances must be from the outer boundaries of the Section

Operator <b>Mountain States Petroleum Corp.</b>		Lease <b>Bell Federal</b>		Well No. <b>1</b>
Grid Letter <b>G</b>	Section <b>26</b>	Range <b>13 South</b>	Range <b>27 East</b>	County <b>Chaves</b>
Actual Location of Well <b>1650</b> feet from the <b>North</b> line and <b>2310</b> feet from the <b>East</b> line				
Ground Elev. <b>3563.1</b>	Producing Formation <b>San Andres</b>	Fracture <b>Wildcat S.H.</b>	Dedicated Acreage <b>40</b> Acres	

1 Outline the acreage dedicated to the subject well by colored pencil or hatchure marks on the plat below.

2 If more than one lease is dedicated to the well, outline each and identify the ownership thereof (both as to working interest and royalty).

3 If more than one lease of different ownership is dedicated to the well, have the interests of all owners been consolidated by communitization, unitization, force-pooling, etc?

☐ Yes ☐ No If answer is "yes," type of consolidation \_\_\_\_\_

If answer is "no" list the owners and tract descriptions which have actually been consolidated. (Use reverse side of this form if necessary) \_\_\_\_\_

No allowable will be assigned to the well until all interests have been consolidated (by communitization, unitization, forced-pooling, or otherwise) or until a non-standard unit, eliminating such interests, has been approved by the Commission.

**RECEIVED**  
**NOV 25 1977**  
**U.S. GEOLOGICAL SURVEY**  
**ARTESIA, NEW MEXICO**

CERTIFICATION

I hereby certify that the information contained herein is true and complete to the best of my knowledge and belief.

*K. C. Havenor*

Name  
**K. C. Havenor**

Position  
**Geologist**

Company  
**Mt. States Pet. Corp.**

Date  
**Nov. 23, 1977**

I hereby certify that the well location shown on this plat was plotted from field notes of actual surveys made by me or under my supervision, and that the same is true and correct to the best of my knowledge and belief.

Date Surveyed

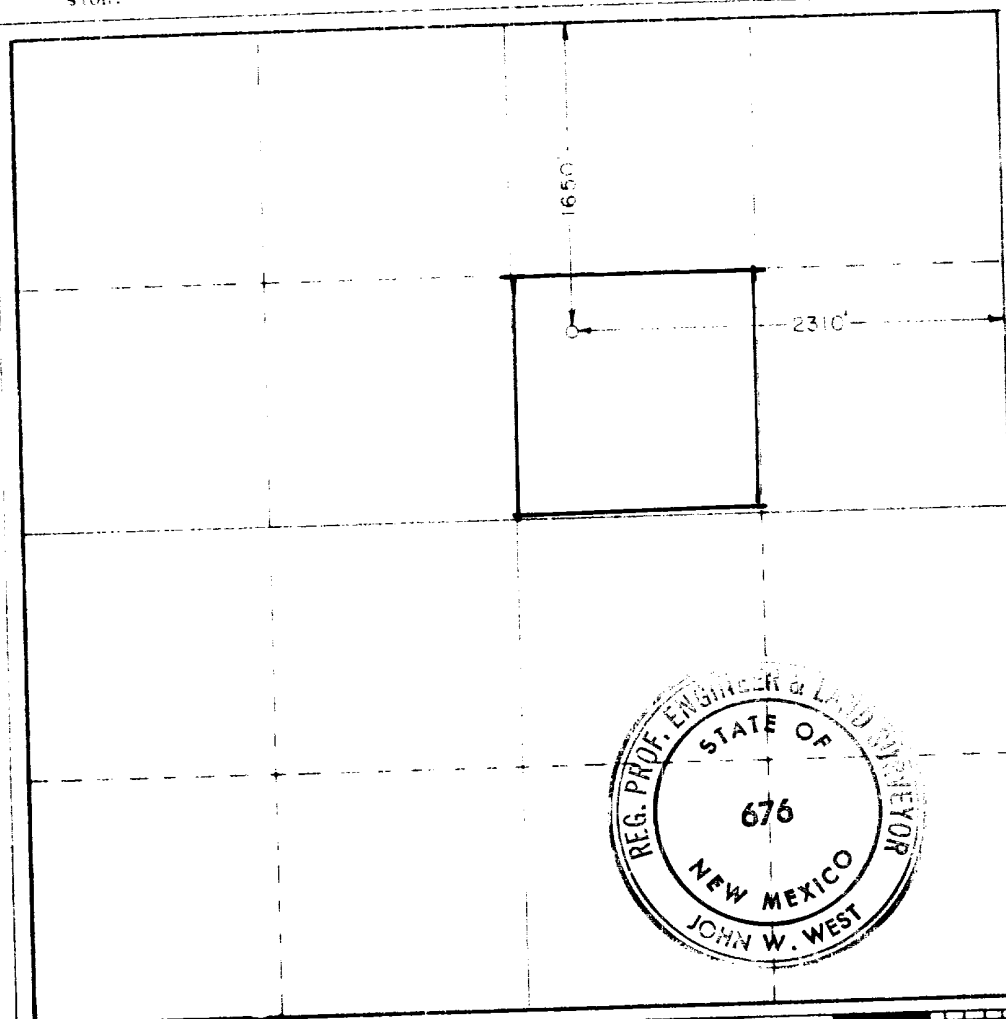
**November 7, 1977**

Registered Professional Engineer and, or, Land Surveyor

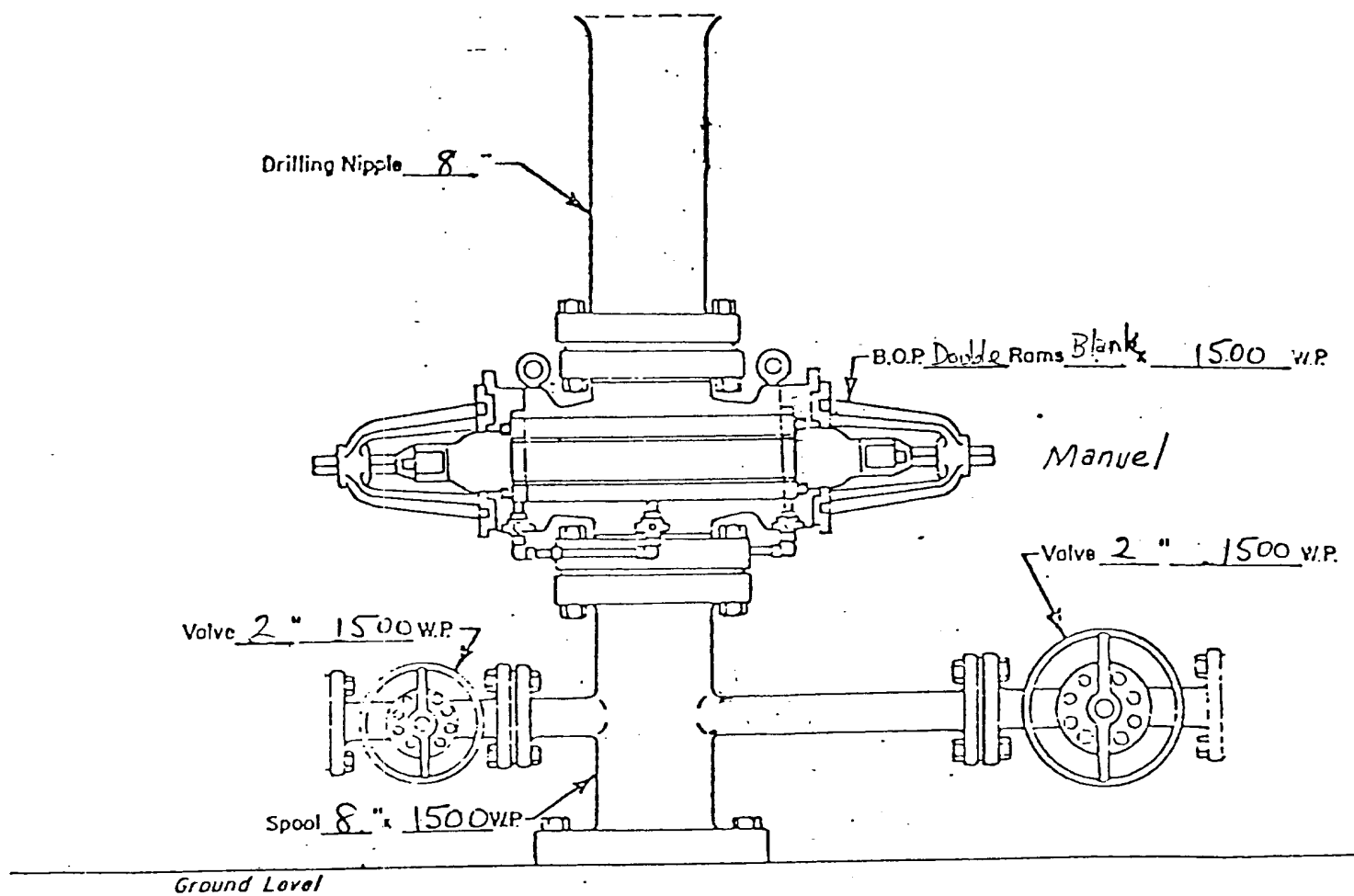
*John W. West*

Certificate No.

**676**



# MOUNTAIN STATES PETROLEUM CORPORATION



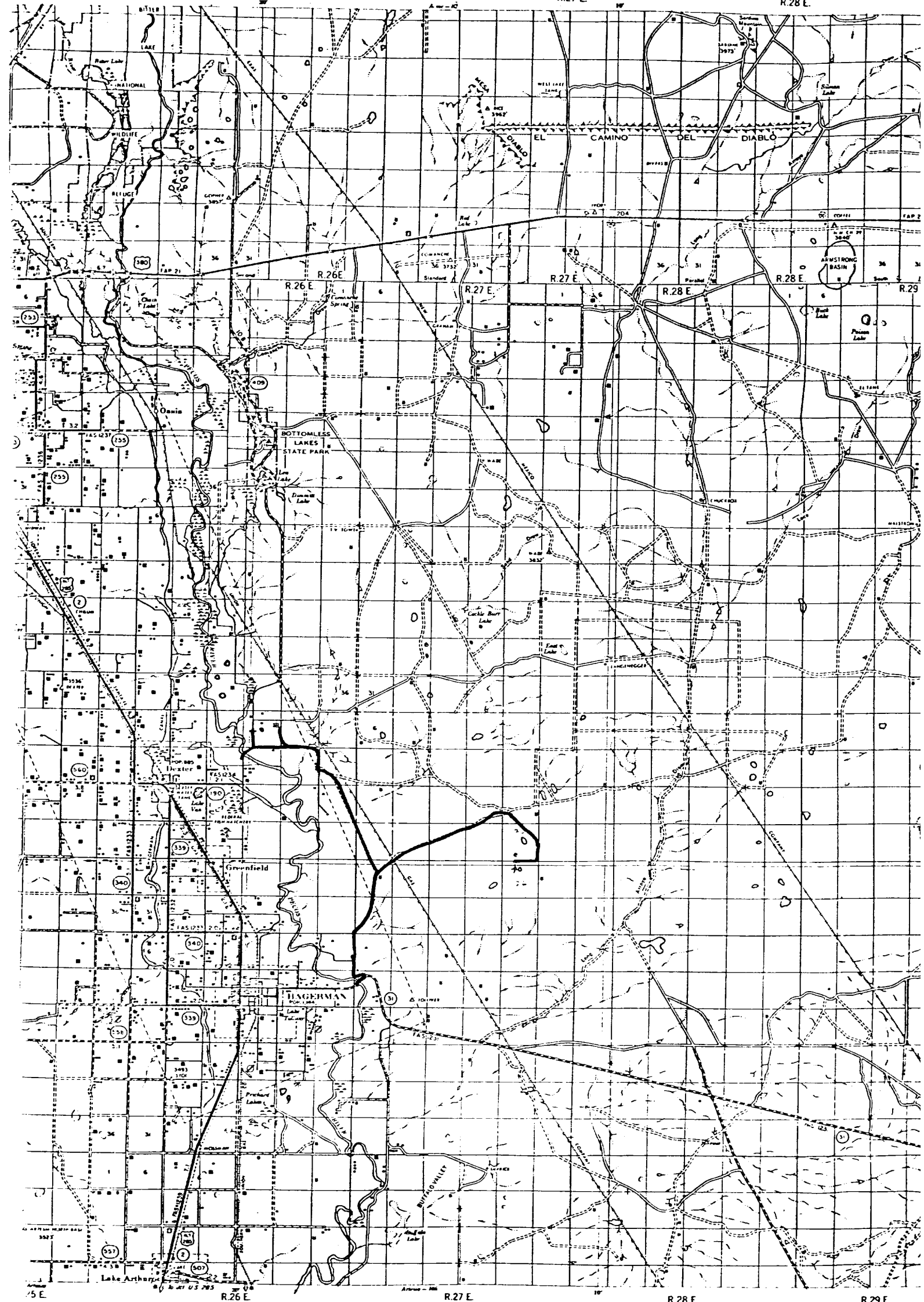
SURFACE WELL HEAD BOP  
1500 psi

R.25 E.

R.26 E.

R.27 E.

R.28 E.



Scale 1 inch = 5 Miles  
0 1 2 3 4  
MILES  
0 1 2 3 4  
FEET

