

UNITED STATES
DEPARTMENT OF THE INTERIOR
GEOLOGICAL SURVEYCopy to SF
30-005-60679

5. LEASE DESIGNATION AND SERIAL NO.

NM 14294

6. IF INDIAN, ALLOTTEE OR TRIBE NAME

7. UNIT AGREEMENT NAME

8. FARM OR LEASE NAME

Pennzoil Federal

9. WELL NO.

#1

10. FIELD AND POOL OR WILDCAT

Undesignated

11. SEC. T. R. M. OR BLK.
AND SURVEY OR AREA

Section 18, T9S, R26E

12. COUNTY OR PARISH

Chaves

13. STATE

N.Mex.

1a. TYPE OF WORK

DRILL ☒DEEPEN ☐RE PLUG BACK ☐

b. TYPE OF WELL

OIL
WELL ☐GAS
WELL ☒

OTHER

SINGLE
ZONE ☐MULTIPLE
ZONE ☐

2. NAME OF OPERATOR

Boyd Operating Company

3. ADDRESS OF OPERATOR

P. O. Box 1756, Roswell, New Mexico 88201

4. LOCATION OF WELL (Report location clearly and in accordance with any State requirements.)*

At surface

2145' from North Line 660' from East

At proposed prod. zone

14. DISTANCE IN MILES AND DIRECTION FROM NEAREST TOWN OR POST OFFICE*

22 miles NE of Roswell, New Mexico

15. DISTANCE FROM PROPOSED*

LOCATION TO NEAREST
PROPERTY OR LEASE LINE, FT.
(Also to nearest drig. unit line, if any)

660

16. NO. OF ACRES IN LEASE

2199.96

17. NO. OF ACRES ASSIGNED
TO THIS WELL

320

18. DISTANCE FROM PROPOSED LOCATION*

TO NEAREST WELL, DRILLING, COMPLETED,
OR APPLIED FOR, ON THIS LEASE, FT.

4300

19. PROPOSED DEPTH

5700

20. ROTARY OR CABLE TOOLS

Rotary

21. ELEVATIONS (Show whether DF, RT, GR, etc.)

3733.3 G.R.

22. APPROX. DATE WORK WILL START*

ASAP

23.

PROPOSED CASING AND CEMENTING PROGRAM

SIZE OF HOLE	SIZE OF CASING	WEIGHT PER FOOT	SETTING DEPTH	QUANTITY OF CEMENT
17 1/2	13 3/8	48#	300'	Circ.
12 1/4	8 5/8	24#	870'	Circ.
7 7/8	5 1/2	15.50	5700'	625 Sx. Class "C" 50/50 Pozmix w/salt, gel and flocele.

Will run logs to evaluate zones, DST, if necessary. Run casing and complete as Wolfcamp and/or Abo gas well. Expected Tops:

San Andres 820
Abo 4170
Wolfcamp 4850
~~Cisco 5420~~
~~Montoya 5590~~
~~Granite Wash 5600~~

RECEIVED
FEB 29 1980
U.S. GEOLOGICAL SURVEY
ARTESIA, NEW MEXICO

GAS NOT DESIGNATED

IN ABOVE SPACE DESCRIBE PROPOSED PROGRAM: If proposal is to deepen or plug back, give data on present productive zone and proposed new productive zone. If proposal is to drill or deepen directionally, give pertinent data on subsurface locations and measured and true vertical depths. Give blowout preventer program, if any.

24.

SIGNED

TITLE

President

DATE

2/25/80

(This space for Federal or State office use)

PERMIT NO.

APPROVAL DATE

APPROVED BY

TITLE

DATE

CONDITIONS OF APPROVAL, IF ANY:

**MEXICO OIL CONSERVATION COMMISSION
WELL LOCATION AND ACREAGE DEDICATION PLAT**

Form C-102
Supersedes C-128
Effective 1-1-65

All distances must be from the outer boundaries of the Section

Operator Boyd Operating Co.		Lease Pennzoil Federal		Well No. 1
Section 1	Range 10	Township 9 South	Range 20 East	County Chaves
Acres 2145		Line and 660		Line East
Section Elev. 3733.3	Section Name Wolfcamp	Pool Undesignated	Section Acres 320	

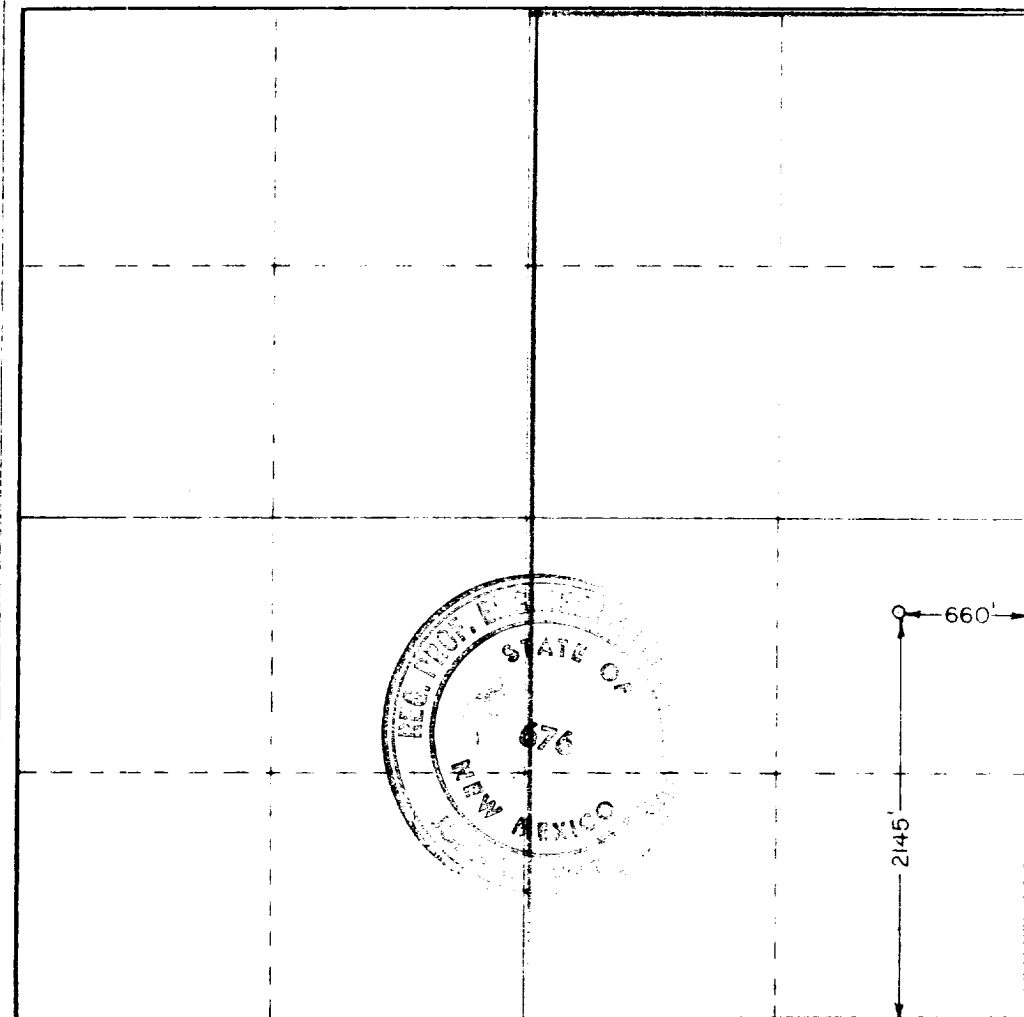
1. Outline the acreage dedicated to the subject well by colored pencil or hatchure marks on the plat below.
2. If more than one lease is dedicated to the well, outline each and identify the ownership thereof (both as to working interest and royalty)
3. If more than one lease of different ownership is dedicated to the well, have the interests of all owners been consolidated by communitization, unitization, force-pooling, etc?

☒ Yes ☐ No If answer is "yes," type of consolidation _____

If answer is "no," list the owners and tract descriptions which have actually been consolidated (the reverse side of this form if necessary): _____

No allowable will be assigned to the well until all interests have been consolidated by communitization, unitization, forced-pooling, or otherwise or until a non-standard unit, eliminating such interests, has been approved by the Commission.

RECEIVED
FEB 29 1980
U.S. GEOLOGICAL SURVEY
ARTESIA, NEW MEXICO



CERTIFICATION

I hereby certify that the information contained herein is true and complete to the best of my knowledge and belief.

T. M. Boyd

T. M. Boyd

President

Boyd Operating Company

2/25/80

I hereby certify that the well location shown on this plat was plotted from field notes of actual surveys made by me or under my supervision, and that the same is true and correct to the best of my knowledge and belief.

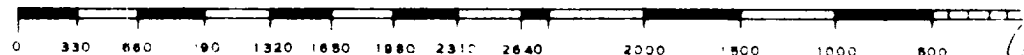
February 11, 1980

Professional Engineer

Title

John W. West

Certificate No. **JOHN W. WEST 676**
PATRICK A. ROMERO 6663
Ronald J. Eidson 3239





United States Department of the Interior

GEOLOGICAL SURVEY
P. O. Drawer U
Artesia, New Mexico 88210

MAR 17 1980

O. C. D.
ARTESIA OFFICE
March 13, 1980

Boyd Operating Company
P. O. Box 1756
Roswell, New Mexico 88201

Gentlemen:

BOYD OPERATING COMPANY
Pennzoil Fed No. 1
2145 FSL 660 FEL Sec. 18 T.9S R.26E
Chaves County Lease No. NM 14294

Above Data Required on Well Sign

Your APPLICATION FOR PERMIT TO DRILL the above-described well to a depth of 5,700 feet to test the Wolfcamp is hereby approved subject to compliance with the OIL AND GAS OPERATING REGULATIONS (30 CFR 221) and the following conditions:

1. Drilling operations authorized are subject to compliance with the attached General Requirements for Oil and Gas Operations on Federal Leases, dated July 1, 1978.
2. Prior to commencing construction of road, pad, or other associated developments, operator will provide the dirt contractor with a copy of the Surface Use Plan and these Conditions of Approval including the attached General Requirements.
3. All access roads will be limited to a 12 foot wide driving surface, excluding turnarounds. Surface disturbance associated with road construction will be limited to 20 feet in width.
4. Submit a Daily Report of Operations from spud date until the well is completed and the Well Completion Report (form 9-330) is filed. The report should not be less than 8" x 5" in size and each page should identify the well.
5. All permanent above-ground structures and equipment shall be painted in accordance with the attached Painting Guidelines. The color used should simulate Sandstone Brown (Federal Standard No. 595A, color 20318 or 30318).
6. Before drilling below the 8-5/8" casing, the blowout preventer assembly will consist of a minimum of one annular type and two ram type preventers.
7. A kelly cock will be installed and maintained in operable condition.

8. After setting the 8-5/8" casing string and before drilling into the Wolfcamp formation, the blowout preventers and related control equipment shall be pressure tested to rated working pressures by an independent service company. Any equipment failing to test satisfactorily shall be repaired or replaced. This office should be notified in sufficient time for a representative to witness the tests and shall be furnished a copy of the pressure test report.
9. Mud system monitoring equipment, with derrick floor indicators and visual and audio alarms, shall be installed and operating before drilling into the Wolfcamp formation and used until production casing is run and cemented. Monitoring equipment shall consist of the following:
 - (1) A recording pit level indicator to determine pit volume gains and losses.
 - (2) A mud volume measuring device for accurately determining mud volume necessary to fill the hole on trips.
 - (3) A flow sensor on the flow-line to warn of any abnormal mud returns from the well.
10. Notify the Survey by telephone 24 hours prior to spudding well.
11. Cement behind the 13-3/8" casing must be circulated.
12. Please have anyone contacting the Survey in regard to this well to identify the well with all of the information required above for the well sign.

Sincerely yours,

George H. Stewart
Acting District Engineer

RECEIVED

SURFACE USE

FEB 20 1980

AND OPERATIONS PLAN

U.S. GEOLOGICAL SURVEY
ARTESIA, NEW MEXICO

WELL NAME: Pennzoil Federal #1

LOCATION: 2145' FNL, 660 FEL Sec. 18, T9S, R26E

1. Existing Roads: Improved caliche lease road approximately 500'
east of location.
2. Planned Access Roads: Build 6" thick, 12' wide watered and compacted
road to south east corner of location.
3. Location of Existing Wells: Wells in Section 3, 10, 20 and 31 of T9S,
R26E.
4. Location of Tank Batteries, Production Facilities, and Production,
Gathering, and Service Lines: If well is a producer, production equipment
will be on the southwest corner of location pad. All lines will stay on
pad.
5. Location and Type of Water Supply (rivers, creeks, lakes, ponds, wells):
Water will be trucked from Roswell, approximately 22 miles.
6. Source of Construction Materials: From Mr. David McRae, surface owner
in Section 6, T9S, R26E NMPM
7. Methods of Handling Waste Disposal: Dig 5' deep pit on northeast
corner of location, reserve pit and working pits for drilling fluid
and cuttings.

8. Ancilliary Facilities: None

9. Well Site Layout: Exhibit "A"

10. Plans for Restoration of the Surface: When well is completed all pits will be closed and cleaned up. If plugged and abandoned, pits will be closed, road and location will be ripped and marker set.

11. Other Information: Location is on gentle slope, sandy soil with mesquite and native grass.

12. Lessee's or Operator's Representative:

Tom Boyd

Business Phone: 623-6044


Home Phone: 623-6400

13. Certification:

I hereby certify that I, or persons under my direct supervision, have inspected the proposed drillsite and access route: that I am familiar with the conditions which presently exist: that the statements made in this plan are, to the best of my knowledge, true and correct: and, that the work associated with the operations proposed herein will be performed by Boyd Operating Company, and its contractors and sub-contractors in conformity with this plan and the terms and conditions under which it is approved.

2/25/80

Date

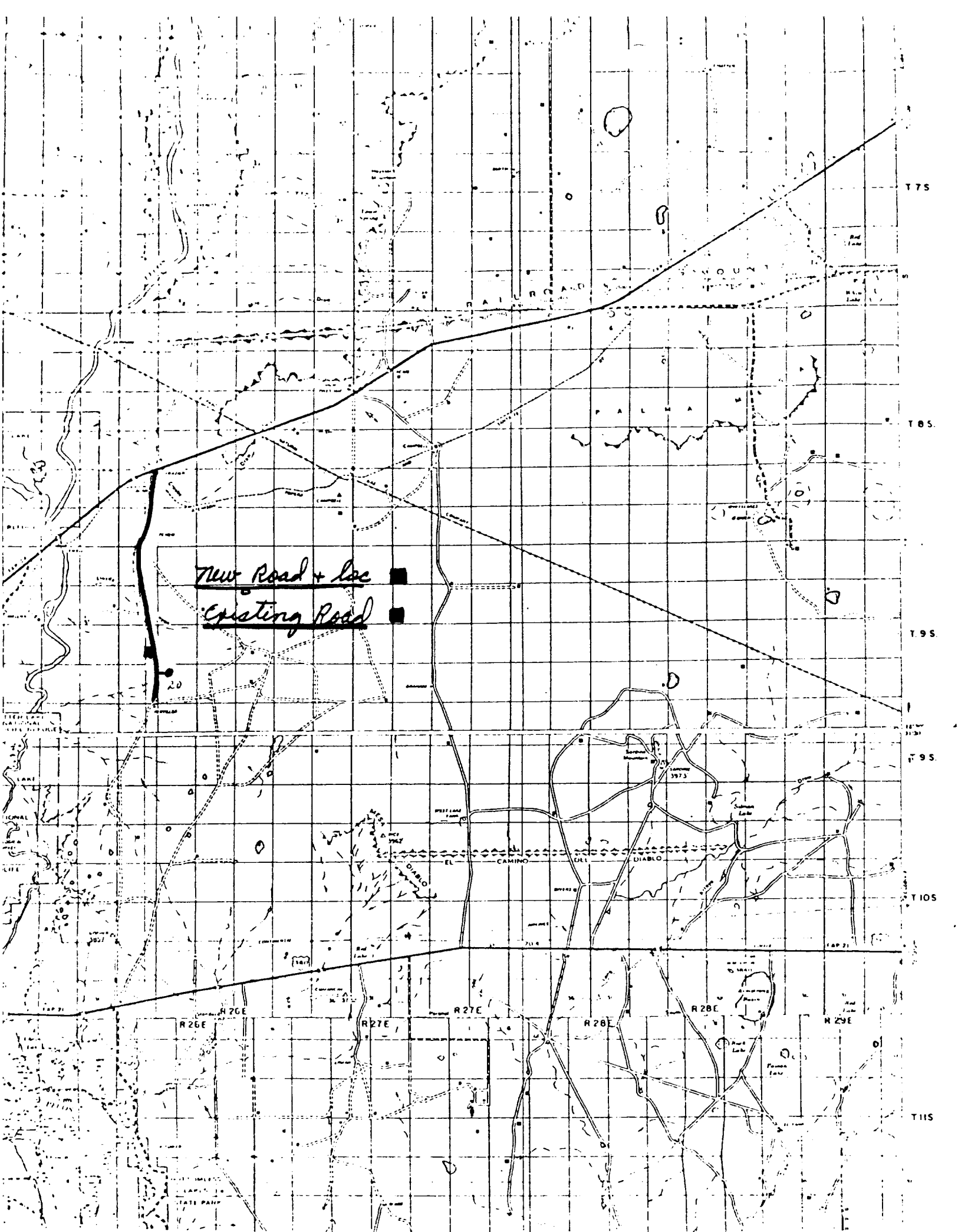

Company Representative

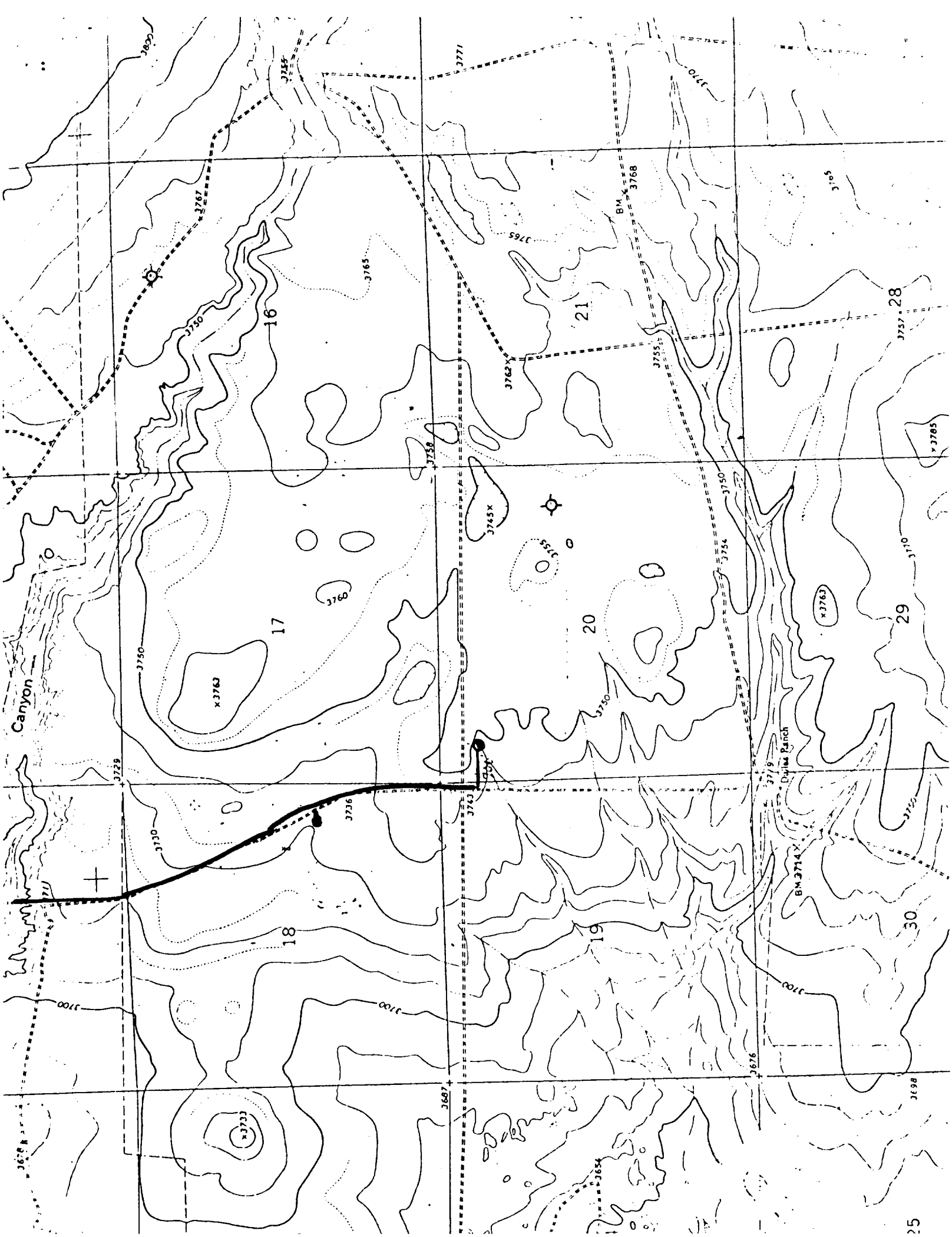
President

Title

Chaves County, New Mexico

38.40 115.00 McClendon Oil 5-1-80 11596 Union Kitchen J.E. Kitchen et al D.T. McCrea M.C. Yates 8-1-86 28171 U.S.	38.40 115.00 Pennzoil 9-1-81 14294 U.S.	38.40 115.00 Depco, Inc. 10-1-82 16790 Yates 1-1-87 25211 U.S.	38.40 115.00 Depco, Inc. 10-1-82 16790 Yates 8-1-86 28170 U.S.	38.40 115.00 Yates 12-1-87 LG4918 4213 State	38.40 115.00 N.M. Bnk. & Tr. Trst. 8-1-81 L-6408 State
38.40 115.00 McClendon Oil 5-1-80 11596 Pennzoil 9-1-81 14294 U.S.	38.40 115.00 Pennzoil 9-1-81 14294 U.S.	38.40 115.00 Yates 8-1-86 28171 U.S.	38.40 115.00 Yates 8-1-86 28170 U.S.	38.40 115.00 Yates 8-1-87 LG 4429 1034 State	38.40 115.00 Yates 12-1-81 L-6772 323 State
38.40 115.00 Pennzoil 9-1-81 14294 U.S.	38.40 115.00 Pennzoil 9-1-81 14294 U.S.	38.40 115.00 Yates 12-1-87 LG4919 1035 State U.S.	38.40 115.00 Yates 8-1-86 28171 U.S.	38.40 115.00 Yates 8-1-87 LG 4429 1034 State	38.40 115.00 Yates 12-1-81 L-6772 323 State
38.40 115.00 Pennzoil 9-1-81 14294 U.S.	38.40 115.00 Pennzoil 9-1-81 14294 U.S.	38.40 115.00 Yates 12-1-87 LG4919 1035 State U.S.	38.40 115.00 Yates 8-1-86 28171 U.S.	38.40 115.00 Yates 8-1-87 LG 4429 1034 State	38.40 115.00 Yates 12-1-81 L-6772 323 State
38.40 115.00 Pennzoil 9-1-81 14294 U.S.	38.40 115.00 Pennzoil 9-1-81 14294 U.S.	38.40 115.00 Yates 12-1-87 LG4919 1035 State U.S.	38.40 115.00 Yates 8-1-86 28171 U.S.	38.40 115.00 Yates 8-1-87 LG 4429 1034 State	38.40 115.00 Yates 12-1-81 L-6772 323 State
38.40 115.00 Pennzoil 9-1-81 14294 U.S.	38.40 115.00 Pennzoil 9-1-81 14294 U.S.	38.40 115.00 Yates 12-1-87 LG4919 1035 State U.S.	38.40 115.00 Yates 8-1-86 28171 U.S.	38.40 115.00 Yates 8-1-87 LG 4429 1034 State	38.40 115.00 Yates 12-1-81 L-6772 323 State
38.40 115.00 Pennzoil 9-1-81 14294 U.S.	38.40 115.00 Pennzoil 9-1-81 14294 U.S.	38.40 115.00 Yates 12-1-87 LG4919 1035 State U.S.	38.40 115.00 Yates 8-1-86 28171 U.S.	38.40 115.00 Yates 8-1-87 LG 4429 1034 State	38.40 115.00 Yates 12-1-81 L-6772 323 State
38.40 115.00 Pennzoil 9-1-81 14294 U.S.	38.40 115.00 Pennzoil 9-1-81 14294 U.S.	38.40 115.00 Yates 12-1-87 LG4919 1035 State U.S.	38.40 115.00 Yates 8-1-86 28171 U.S.	38.40 115.00 Yates 8-1-87 LG 4429 1034 State	38.40 115.00 Yates 12-1-81 L-6772 323 State
38.40 115.00 Pennzoil 9-1-81 14294 U.S.	38.40 115.00 Pennzoil 9-1-81 14294 U.S.	38.40 115.00 Yates 12-1-87 LG4919 1035 State U.S.	38.40 115.00 Yates 8-1-86 28171 U.S.	38.40 115.00 Yates 8-1-87 LG 4429 1034 State	38.40 115.00 Yates 12-1-81 L-6772 323 State
38.40 115.00 Pennzoil 9-1-81 14294 U.S.	38.40 115.00 Pennzoil 9-1-81 14294 U.S.	38.40 115.00 Yates 12-1-87 LG4919 1035 State U.S.	38.40 115.00 Yates 8-1-86 28171 U.S.	38.40 115.00 Yates 8-1-87 LG 4429 1034 State	38.40 115.00 Yates 12-1-81 L-6772 323 State
38.40 115.00 Pennzoil 9-1-81 14294 U.S.	38.40 115.00 Pennzoil 9-1-81 14294 U.S.	38.40 115.00 Yates 12-1-87 LG4919 1035 State U.S.	38.40 115.00 Yates 8-1-86 28171 U.S.	38.40 115.00 Yates 8-1-87 LG 4429 1034 State	38.40 115.00 Yates 12-1-81 L-6772 323 State
38.40 115.00 Pennzoil 9-1-81 14294 U.S.	38.40 115.00 Pennzoil 9-1-81 14294 U.S.	38.40 115.00 Yates 12-1-87 LG4919 1035 State U.S.	38.40 115.00 Yates 8-1-86 28171 U.S.	38.40 115.00 Yates 8-1-87 LG 4429 1034 State	38.40 115.00 Yates 12-1-81 L-6772 323 State
38.40 115.00 Pennzoil 9-1-81 14294 U.S.	38.40 115.00 Pennzoil 9-1-81 14294 U.S.	38.40 115.00 Yates 12-1-87 LG4919 1035 State U.S.	38.40 115.00 Yates 8-1-86 28171 U.S.	38.40 115.00 Yates 8-1-87 LG 4429 1034 State	38.40 115.00 Yates 12-1-81 L-6772 323 State
38.40 115.00 Pennzoil 9-1-81 14294 U.S.	38.40 115.00 Pennzoil 9-1-81 14294 U.S.	38.40 115.00 Yates 12-1-87 LG4919 1035 State U.S.	38.40 115.00 Yates 8-1-86 28171 U.S.	38.40 115.00 Yates 8-1-87 LG 4429 1034 State	38.40 115.00 Yates 12-1-81 L-6772 323 State
38.40 115.00 Pennzoil 9-1-81 14294 U.S.	38.40 115.00 Pennzoil 9-1-81 14294 U.S.	38.40 115.00 Yates 12-1-87 LG4919 1035 State U.S.	38.40 115.00 Yates 8-1-86 28171 U.S.	38.40 115.00 Yates 8-1-87 LG 4429 1034 State	38.40 115.00 Yates 12-1-81 L-6772 323 State
38.40 115.00 Pennzoil 9-1-81 14294 U.S.	38.40 115.00 Pennzoil 9-1-81 14294 U.S.	38.40 115.00 Yates 12-1-87 LG4919 1035 State U.S.	38.40 115.00 Yates 8-1-86 28171 U.S.	38.40 115.00 Yates 8-1-87 LG 4429 1034 State	38.40 115.00 Yates 12-1-81 L-6772 323 State
38.40 115.00 Pennzoil 9-1-81 14294 U.S.	38.40 115.00 Pennzoil 9-1-81 14294 U.S.	38.40 115.00 Yates 12-1-87 LG4919 1035 State U.S.	38.40 115.00 Yates 8-1-86 28171 U.S.	38.40 115.00 Yates 8-1-87 LG 4429 1034 State	38.40 115.00 Yates 12-1-81 L-6772 323 State
38.40 115.00 Pennzoil 9-1-81 14294 U.S.	38.40 115.00 Pennzoil 9-1-81 14294 U.S.	38.40 115.00 Yates 12-1-87 LG4919 1035 State U.S.	38.40 115.00 Yates 8-1-86 28171 U.S.	38.40 115.00 Yates 8-1-87 LG 4429 1034 State	38.40 115.00 Yates 12-1-81 L-6772 323 State
38.40 115.00 Pennzoil 9-1-81 14294 U.S.	38.40 115.00 Pennzoil 9-1-81 14294 U.S.	38.40 115.00 Yates 12-1-87 LG4919 1035 State U.S.	38.40 115.00 Yates 8-1-86 28171 U.S.	38.40 115.00 Yates 8-1-87 LG 4429 1034 State	38.40 115.00 Yates 12-1-81 L-6772 323 State
38.40 115.00 Pennzoil 9-1-81 14294 U.S.	38.40 115.00 Pennzoil 9-1-81 14294 U.S.	38.40 115.00 Yates 12-1-87 LG4919 1035 State U.S.	38.40 115.00 Yates 8-1-86 28171 U.S.	38.40 115.00 Yates 8-1-87 LG 4429 1034 State	38.40 115.00 Yates 12-1-81 L-6772 323 State
38.40 115.00 Pennzoil 9-1-81 14294 U.S.	38.40 115.00 Pennzoil 9-1-81 14294 U.S.	38.40 115.00 Yates 12-1-87 LG4919 1035 State U.S.	38.40 115.00 Yates 8-1-86 28171 U.S.	38.40 115.00 Yates 8-1-87 LG 4429 1034 State	38.40 115.00 Yates 12-1-81 L-6772 323 State
38.40 115.00 Pennzoil 9-1-81 14294 U.S.	38.40 115.00 Pennzoil 9-1-81 14294 U.S.	38.40 115.00 Yates 12-1-87 LG4919 1035 State U.S.	38.40 115.00 Yates 8-1-86 28171 U.S.	38.40 115.00 Yates 8-1-87 LG 4429 1034 State	38.40 115.00 Yates 12-1-81 L-6772 323 State
38.40 115.00 Pennzoil 9-1-81 14294 U.S.	38.40 115.00 Pennzoil 9-1-81 14294 U.S.	38.40 115.00 Yates 12-1-87 LG4919 1035 State U.S.	38.40 115.00 Yates 8-1-86 28171 U.S.	38.40 115.00 Yates 8-1-87 LG 4429 1034 State	38.40 115.00 Yates 12-1-81 L-6772 323 State
38.40 115.00 Pennzoil 9-1-81 14294 U.S.	38.40 115.00 Pennzoil 9-1-81 14294 U.S.	38.40 115.00 Yates 12-1-87 LG4919 1035 State U.S.	38.40 115.00 Yates 8-1-86 28171 U.S.	38.40 115.00 Yates 8-1-87 LG 4429 1034 State	38.40 115.00 Yates 12-1-81 L-6772 323 State
38.40 115.00 Pennzoil 9-1-81 14294 U.S.	38.40 115.00 Pennzoil 9-1-81 14294 U.S.	38.40 115.00 Yates 12-1-87 LG4919 1035 State U.S.	38.40 115.00 Yates 8-1-86 28171 U.S.	38.40 115.00 Yates 8-1-87 LG 4429 1034 State	38.40 115.00 Yates 12-1-81 L-6772 323 State
38.40 115.00 Pennzoil 9-1-81 14294 U.S.	38.40 115.00 Pennzoil 9-1-81 14294 U.S.	38.40 115.00 Yates 12-1-87 LG4919 1035 State U.S.	38.40 115.00 Yates 8-1-86 28171 U.S.	38.40 115.00 Yates 8-1-87 LG 4429 1034 State	38.40 115.00 Yates 12-1-81 L-6772 323 State
38.40 115.00 Pennzoil 9-1-81 14294 U.S.	38.40 115.00 Pennzoil 9-1-81 14294 U.S.	38.40 115.00 Yates 12-1-87 LG4919 1035 State U.S.	38.40 115.00 Yates 8-1-86 28171 U.S.	38.40 115.00 Yates 8-1-87 LG 4429 1034 State	38.40 115.00 Yates 12-1-81 L-6772 323 State
38.40 115.00 Pennzoil 9-1-81 14294 U.S.	38.40 115.00 Pennzoil 9-1-81 14294 U.S.	38.40 115.00 Yates 12-1-87 LG4919 1035 State U.S.	38.40 115.00 Yates 8-1-86 28171 U.S.	38.40 115.00 Yates 8-1-87 LG 4429 1034 State	38.40 115.00 Yates 12-1-81 L-6772 323 State
38.40 115.00 Pennzoil 9-1-81 14294 U.S.	38.40 115.00 Pennzoil 9-1-81 14294 U.S.	38.40 115.00 Yates 12-1-87 LG4919 1035 State U.S.	38.40 115.00 Yates 8-1-86 28171 U.S.	38.40 115.00 Yates 8-1-87 LG 4429 1034 State	38.40 115.00 Yates 12-1-81 L-6772 323 State
38.40 115.00 Pennzoil 9-1-81 14294 U.S.	38.40 115.00 Pennzoil 9-1-81 14294 U.S.	38.40 115.00 Yates 12-1-87 LG4919 1035 State U.S.	38.40 115.00 Yates 8-1-86 28171 U.S.	38.40 115.00 Yates 8-1-87 LG 4429 1034 State	38.40 115.00 Yates 12-1-81 L-6772 323 State
38.40 115.00 Pennzoil 9-1-81 14294 U.S.	38.40 115.00 Pennzoil 9-1-81 14294 U.S.	38.40 115.00 Yates 12-1-87 LG4919 1035 State U.S.	38.40 115.00 Yates 8-1-86 28171 U.S.	38.40 115.00 Yates 8-1-87 LG 4429 1034 State	38.40 115.00 Yates 12-1-81 L-6772 323 State
38.40 115.00 Pennzoil 9-1-81 14294 U.S.	38.40 115.00 Pennzoil 9-1-81 14294 U.S.	38.40 115.00 Yates 12-1-87 LG4919 1035 State U.S.	38.40 115.00 Yates 8-1-86 28171 U.S.	38.40 115.00 Yates 8-1-87 LG 4429 1034 State	38.40 115.00 Yates 12-1-81 L-6772 323 State
38.40 115.00 Pennzoil 9-1-81 14294 U.S.	38.40 115.00 Pennzoil 9-1-81 14294 U.S.	38.40 115.00 Yates 12-1-87 LG4919 1035 State U.S.	38.40 115.00 Yates 8-1-86 28171 U.S.	38.40 115.00 Yates 8-1-87 LG 4429 1034 State	38.40 115.00 Yates 12-1-81 L-6772 323 State
38.40 115.00 Pennzoil 9-1-81 14294 U.S.	38.40 115.00 Pennzoil 9-1-81 14294 U.S.	38.40 115.00 Yates 12-1-87 LG4919 1035 State U.S.	38.40 115.00 Yates 8-1-86 28171 U.S.	38.40 115.00 Yates 8-1-87 LG 4429 1034 State	38.40 115.00 Yates 12-1-81 L-6772 323 State
38.40 115.00 Pennzoil 9-1-81 14294 U.S.	38.40 115.00 Pennzoil 9-1-81 14294 U.S.	38.40 115.00 Yates 12-1-87 LG4919 1035 State U.S.	38.40 115.00 Yates 8-1-86 28171 U.S.	38.40 115.00 Yates 8-1-87 LG 4429 1034 State	38.40 115.00 Yates 12-1-81 L-6772 323 State
38.40 115.00 Pennzoil 9-1-81 14294 U.S.	38.40 115.00 Pennzoil 9-1-81 14294 U.S.	38.40 115.00 Yates 12-1-87 LG4919 1035 State U.S.	38.40 115.00 Yates 8-1-86 28171 U.S.	38.40 115.00 Yates 8-1-87 LG 4429 1034 State	38.40 115.00 Yates 12-1-81 L-6772 323 State
38.40 115.00 Pennzoil 9-1-81 14294 U.S.	38.40 115.00 Pennzoil 9-1-81 14294 U.S.	38.40 115.00 Yates 12-1-87 LG4919 1035 State U.S.	38.40 115.00 Yates 8-1-86 28171 U.S.	38.40 115.00 Yates 8-1-87 LG 4429 1034 State	38.40 115.00 Yates 12-1-81 L-6772 323 State
38.40 115.00 Pennzoil 9-1-81 14294 U.S.	38.40 115.00 Pennzoil 9-1-81 14294 U.S.	38.40 115.00 Yates 12-1-87 LG4919 1035 State U.S.	38.40 115.00 Yates 8-1-86 28171 U.S.	38.40 115.00 Yates 8-1-87 LG 4429 1034 State	38.40 115.00 Yates 12-1-81 L-6772 323 State
38.40 115.00 Pennzoil 9-1-81 14294 U.S.	38.40 115.00 Pennzoil 9-1-81 14294 U.S.	38.40 115.00 Yates 12-1-87 LG4919 1035 State U.S.	38.40 115.00 Yates 8-1-86 28171 U.S.	38.40 115.00 Yates 8-1-87 LG 4429 1034 State	38.40 115.00 Yates 12-1-81 L-6772 323 State
38.40 115.00 Pennzoil 9-1-81 14294 U.S.	38.40 115.00 Pennzoil 9-1-81 14294 U.S.	38.40 115.00 Yates 12-1-87 LG4919 1035 State U.S.	38.40 115.00 Yates 8-1-86 28171 U.S.	38.40 115.00 Yates 8-1-87 LG 4429 1034 State	38.40 115.00 Yates 12-1-81 L-6772 323 State
38.40 115.00 Pennzoil 9-1-81 14294 U.S.	38.40 115.00 Pennzoil 9-1-81 14294 U.S.	38.40 115.00 Yates 12-1-87 LG4919 1035 State U.S.	38.40 115.00 Yates 8-1-86 28171 U.S.	38.40 115.00 Yates 8-1-87 LG 4429 1034 State	38.40 115.00 Yates 12-1-81 L-6772 323 State
38.40 115.00 Pennzoil 9-1-81 14294 U.S.	38.40 115.00 Pennzoil 9-1-81 14294 U.S.	38.40 115.00 Yates 12-1-87 LG4919 1035 State U.S.	38.40 115.00 Yates 8-1-86 28171 U.S.	38.40 115.00 Yates 8-1-87 LG 4429 1034 State	38.40 115.00 Yates 12-1-81 L-6772 323 State
38.40 115.00 Pennzoil 9-1-81 14294 U.S.	38.40 115.00 Pennzoil 9-1-81 14294 U.S.	38.40 115.00 Yates 12-1-87 LG4919 1035 State U.S.	38.40 115.00 Yates 8-1-86 28171 U.S.	38.40 115.00 Yates 8-1-87 LG 4429 1034 State	38.40 115.00 Yates 12-1-81 L-6772 323 State
38.40 115.00 Pennzoil 9-1-81 14294 U.S.	38.40 115.00 Pennzoil 9-1-81 14294 U.S.	38.40 115.00 Yates 12-1-87 LG4919 1035 State U.S.	38.40 115.00 Yates 8-1-86 28171 U.S.	38.40 115.00 Yates 8-1-87 LG 4429 1034 State	38.40 115.00 Yates 12-1-81 L-6772 323 State
38.40 115.00 Pennzoil 9-1-81 14294 U.S.	38.40 115.00 Pennzoil 9-1-81 14294 U.S.	38.40 115.00 Yates 12-1-87 LG4919 1035 State U.S.	38.40 115.00 Yates 8-1-86 28171 U.S.	38.40 115.00 Yates 8-1-87 LG 4429 1034 State	38.40 115.00 Yates 12-1-81 L-6772 323 State
38.40 115.00 Pennzoil 9-1-81 14294 U.S.	38.40 115.00 Pennzoil 9-1-81 14294 U.S.	38.40 115.00 Yates 12-1-87 LG4919 1035 State U.S.	38.40 115.00 Yates 8-1-86 28171 U.S.	38.40 115.00 Yates 8-1-87 LG 4429	





Suggested Drilling Fluid Program

June 13, 1979

RECEIVED

JUN 28 1979

Boyd Operating Co.
Drawer I
Artesia, N. M. 88210

U.S. GEOLOGICAL SURVEY
ARTESIA, NEW MEXICO

Dear Mr. Morgan;

Thank you for the opportunity to be of service to you and Boyd Operating Co.

The following is our proposed drilling fluid program for your "Blakemore Federal #1" to be drilled in Section 20, T-9-S, R-26-E, Chaves County, New Mexico.

Surface: 300' of 13 3/8"

We suggest spudding with a gel lime slurry having 32 to 34 Sec./1000^{cc} viscosity. This fluid should be adequate to drill to casing point.

No trouble is anticipated in this interval.

Intermediate: ^{800'} 1,200' of 8 5/8"

We suggest drilling this interval with native mud and maintaining a stable 33 to 35 Sec./1000^{cc} viscosity.

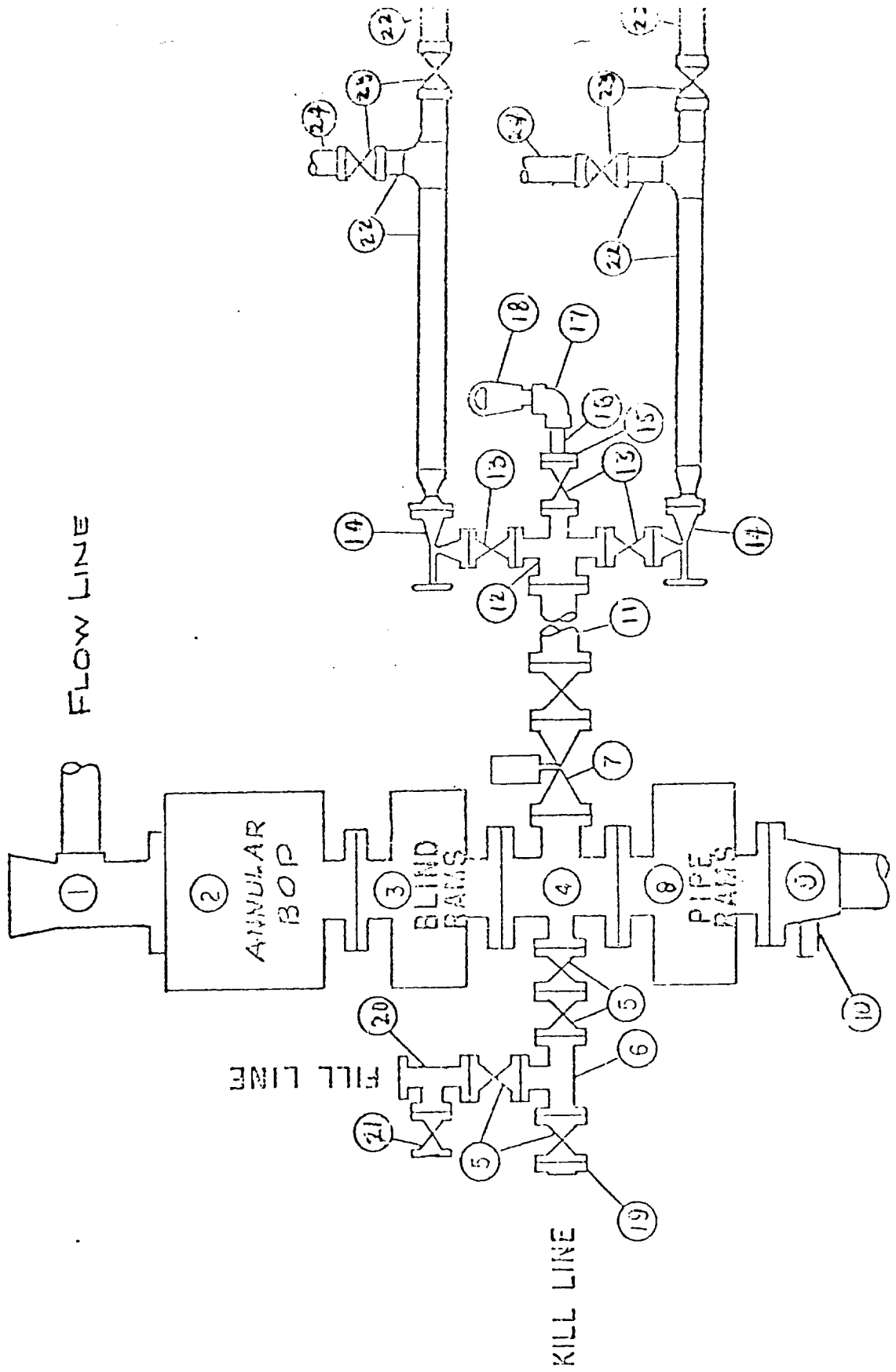
It is very important to maintain a stable viscosity to minimize hole trouble. This fluid should be adequate to drill to casing point.

Production: ^{5,700'} 6,000' of 5 1/2"

We suggest drilling out from under the intermediate casing with water and using Jet Jel to keep the water clean. This fluid should be adequate to drill to 5,000' or 150' above the Abo formation.

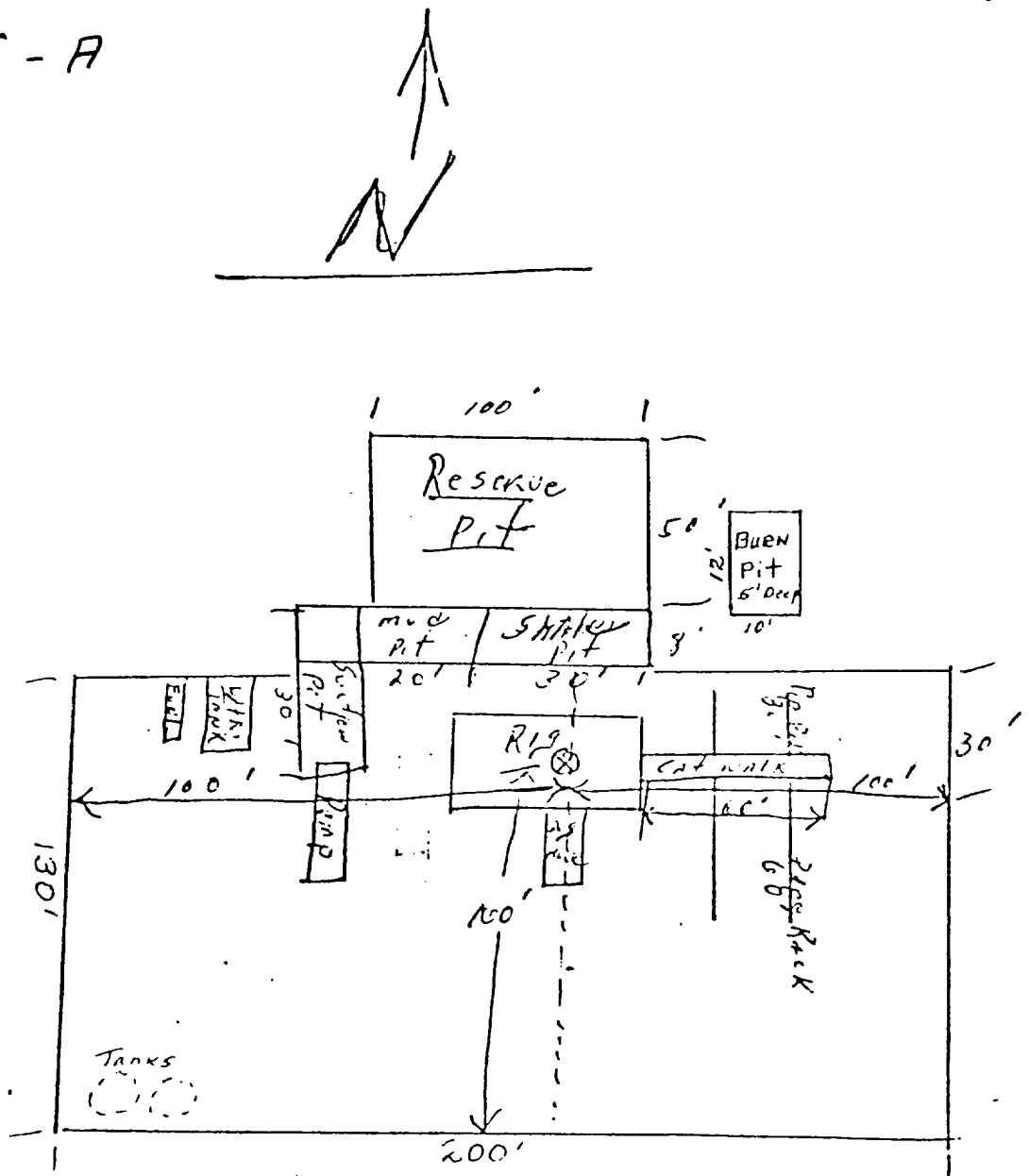
At this point we suggest raising the viscosity to 38 to 40 Sec./1000^{cc} and adding 3 to 4% oil to help stabilize the hole. This fluid should be adequate to drill to 5,800', where we suggest adding starch to lower the fluid loss to 10 to 15^{cc}.

WEK DRILLING CO., INC.
BLOWOUT PREVENTER SPECIFICATION



W. L. S. & S. Co. Inc. Rig #1 Location & mud Pit Specs.

EXHIBIT - A



Shaffer 10" Series 900 Type B B.O.P. with 4½" pipe rams and blanks.
Hydraulic operated 6,000# test, 3,000# WOP.

K. DRILLING CO., INC.
EQUIPMENT DESCRIPTION

All equipment should be at least 3,000 psi WP or higher unless otherwise specified.

1. Bell nipple.
2. Hydril bag type preventer
3. Ram type pressure operated blowout preventer with blind rams.
4. Flanged spool with one 3-inch and one 2-inch (minimum) outlet.
5. 2-inch (minimum) flanged plug or gate valve.
6. 2-inch by 2-inch by 2-inch (minimum) flanged tee.
7. 3-inch gate valve.
8. Ram type pressure operated blowout preventer with pipe rams.
9. Flanged type casing head with one side outlet.
10. 2-inch threaded (or flanged) plug or gate valve.
Flanged on 5000# WP, threaded on 3000# WP or less.
11. 3-inch flanged spacer spool.
12. 3-inch by 2-inch by 2-inch by 2-inch flanged cross.
13. 2-inch flanged plug or gate valve.
14. 2-inch flanged adjustable choke.
15. 2-inch threaded flange.
16. 2-inch XXH nipple.
17. 2-inch forged steel 90° Ell.
18. Cameron (or equal.) threaded pressure gage.
19. Threaded flange.
20. 2-inch flanged tee.
21. 2-inch flanged plug or gate valve.
22. 2½-inch pipe, 300' to pit, anchored.
23. 2½-inch SE valve.
24. 2½-inch line to steel pit or separator.

NOTES:

1. Items 3, 4 and 8 may be replaced with double ram type preventer with side outlets between the rams.
2. The two valves next to the stack on the fill and kill line to be closed unless drill string is being pulled.
3. Kill line is for emergency use only. This connection shall not be used for filling.
4. Replacement pipe rams and blind rams shall be on location at all times.
5. Only type U, LSW and QRC ram type preventers with secondary seals are acceptable for 5000 psi WP and higher BOP stacks.
6. Type E ram-type BOP's with factory modified side outlets may be used on 3000 psi or lower WP BOP stacks.

ARCHAEOLOGICAL CLEARANCE REPORT

for

BOYD OPERATION COMPANY

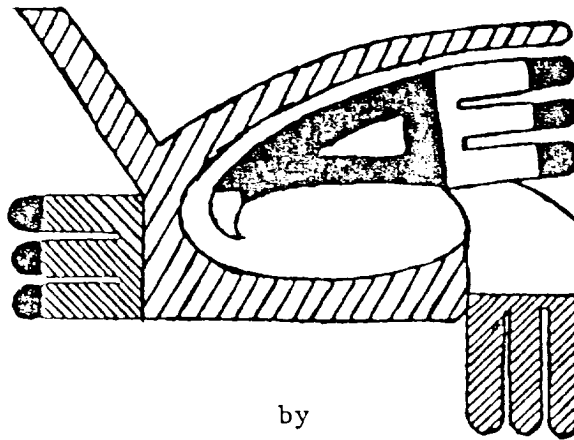
Penzoil Federal No. 1

80-197

RECEIVED

MAR 10 1980

**U.S. GEOLOGICAL SURVEY
ARTESIA, NEW MEXICO**



by

Rodrick MacLennan

Edited and Submitted by

Scott C. Schermer
Acting Director
AGENCY FOR CONSERVATION ARCHAEOLOGY

Llano Estacado Center for Advanced
Professional Studies and Research

Eastern New Mexico University
Portales, New Mexico 88130

March 5, 1980

INTRODUCTION

An archaeological reconnaissance was recently completed by the Agency for Conservation Archaeology, Eastern New Mexico University, Portales, New Mexico, for Boyd Operation Company in Chaves County, New Mexico. The reconnoitered area will be impacted by the construction of a well pad. The project was administered jointly by Mr. Tom Boyd of Boyd Operation Company and Scott C. Schermer, Acting Director, Agency for Conservation Archaeology. This report was prepared by the Roswell Office of ACA, Rodrick MacLennan, Manager.

The field work was conducted on March 4, 1980 by Rodrick MacLennan. Windy but clear field and weather conditions prevailed throughout the course of this reconnaissance. This survey was completed under Federal Antiquity Permit No. 79-NM-049. A search of the National Register has been made and properties within this area are not listed on the Register.

SURVEY TECHNIQUE

Visual inspection of the well pad was accomplished by walking a series of parallel transects. Each transect was covered in a tightly spaced zigzag pattern. The distance between transects was 25 feet. This method maximized the opportunity of observing any cultural resources either within or near the proposed area of impact.

Penzoil Federal No. 1

Location

The proposed well pad is located 5 miles south of Frazier, New Mexico, in the Pecos River Valley. The pad measures 400 X 400 feet and is situated as follows:

NE $\frac{1}{4}$ SE $\frac{1}{4}$, Section 18, T9S, R26E, NMPM, Chaves County, New Mexico (BLM Mineral)

Map Reference: USGS Acme Quadrangle, 7.5 minute series, 1962
(see Figures 1 & 2).

Terrain

The proposed well pad facility is located in the Pecos River Valley and is 1 mile south of Lloyds Canyon. The pad is situated on a flat, first river terrace of the Pecos River. The elevation in the area is approximately 3733 feet.

The soils encountered in the area are predominantly sandy loam. Lithic inclusions within this soil consists of caliche fragments, making up about 7% of the soil content. Taxonomically, this soil can be classified as a member of the Gypsiorthid-Torriorthent-Gypsum Land association.

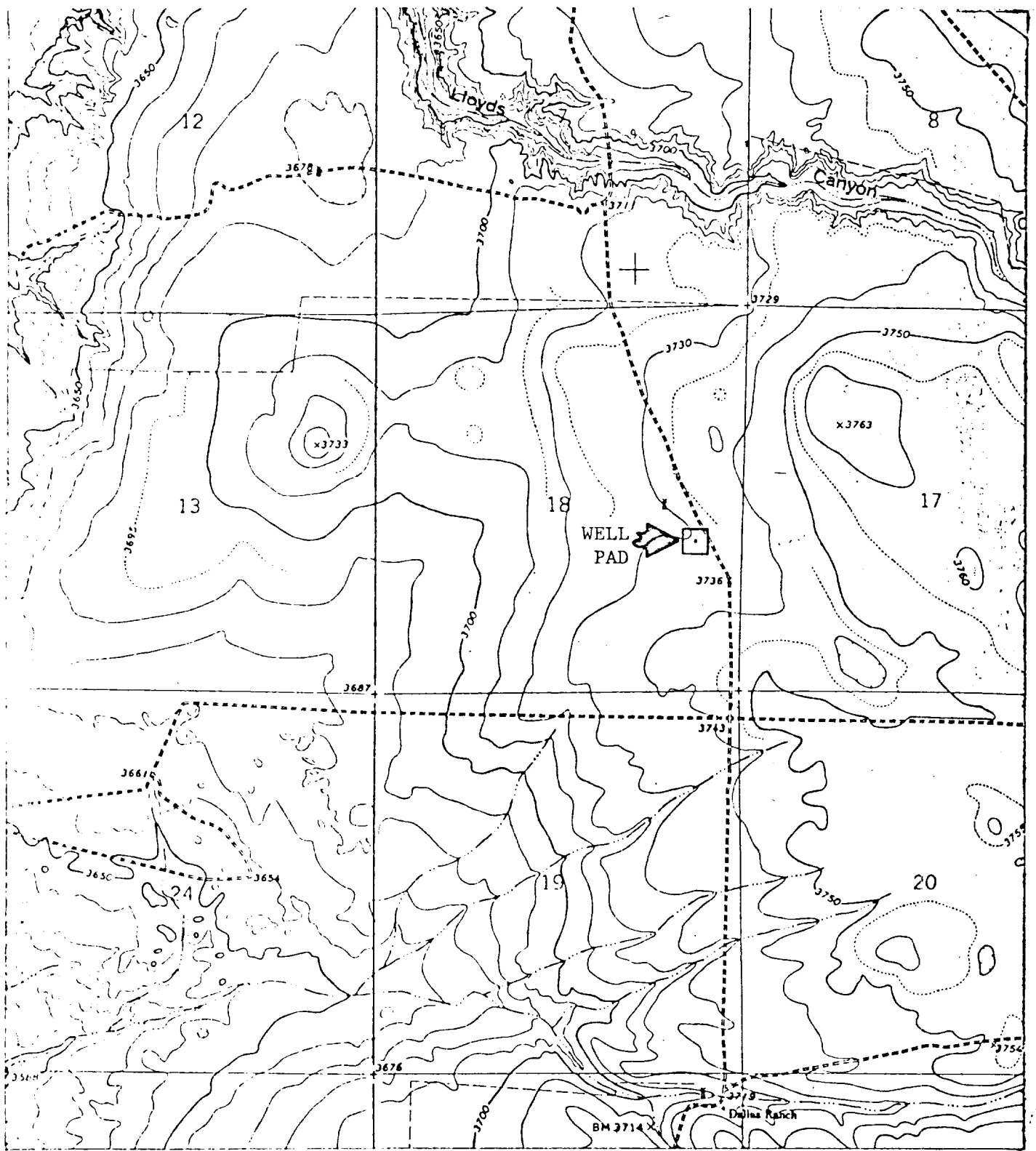
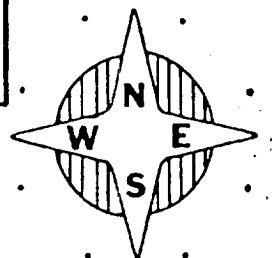


Figure 2: Location of Penzoil Federal No. 1
Section 18, T9S, R26E, Chaves County

Map Reference: USGS Acme Quadrangle, 1962

7.5 MINUTE
SERIES



SCALE 1:24,000



Floristics

The Agency for Conservation Archaeology encountered a sparse floral assemblage in this vicinity. The density of the vegetation in the area is approximately 10 percent, consisting primarily of shrubs. Among the species present are: mesquite (Prosopis juliflora), black grama (Bouteloua eriopoda), blue grama (Bouteloua gracilis), buffalograss (Buchloe dactyloides), hairy grama (Bouteloua hirsuta), little bluestem (Andropogon scoparis), ring muhly (Muhlenbergia torreyi), side-oats grama (Bouteloua curtipendula), and tabosa (Hilaria mutica).

Cultural Resources

During the course of this reconnaissance, the Agency for Conservation Archaeology did not encounter any archaeological sites or isolated manifestations either within or near the proposed facility. A review of ACA's site files and the National Register did not show any properties listed for this location.

Recommendations

ACA recommends clearance for the proposed well pad facility and suggests that construction be allowed to proceed as currently planned.