

Drawer
Artesia, NM 88210

SUBMIT IN TRIPLICATE*
(Other instructions on reverse side)

Form approved,
Budget Bureau No. 42-R1425.

UNITED STATES
DEPARTMENT OF THE INTERIOR
GEOLOGICAL SURVEY

30-005-61478
RECEIVED
NM-33659

APPLICATION FOR PERMIT TO DRILL, DEEPEN, OR PLUG BACK

1a. TYPE OF WORK
DRILL ☒ DEEPEN ☐ PLUG BACK ☐

b. TYPE OF WELL
OIL WELL ☐ GAS WELL ☒ OTHER ☐ SINGLE ZONE ☒ MULTIPLE ZONE ☐

2. NAME OF OPERATOR
Estoril Producing Corporation

3. ADDRESS OF OPERATOR
11th Floor, Vaughn Bldg. Midland, Tx 79701

4. LOCATION OF WELL (Report location clearly and in accordance with any State requirements.)*
At surface 1980' FSL & 1980' FWL Sec. 12, T-4S, R-23E
At proposed prod. zone Same

14. DISTANCE IN MILES AND DIRECTION FROM NEAREST TOWN OR POST OFFICE*
35 miles north of Roswell, N.M.

15. DISTANCE FROM PROPOSED* LOCATION TO NEAREST PROPERTY OR LEASE LINE, FT.
(Also to nearest drlg. unit line, if any) 1980 FSL

16. NO. OF ACRES IN LEASE 2400
17. NO. OF ACRES ASSIGNED TO THIS WELL 160
18. DISTANCE FROM PROPOSED LOCATION* TO NEAREST WELL, DRILLING, COMPLETED, OR APPLIED FOR, ON THIS LEASE, FT. 5610' East Hoff. Fed #1
19. PROPOSED DEPTH 5000'

20. ROTARY OR CABLE TOOLS Rotary
21. ELEVATIONS (Show whether DF, RT, GR, etc.) 4161.3 GR
22. APPROX. DATE WORK WILL START* Jan 4, 1982

23. PROPOSED CASING AND CEMENTING PROGRAM

SIZE OF HOLE	SIZE OF CASING	WEIGHT PER FOOT	SETTING DEPTH	QUANTITY OF CEMENT
14 3/4"	10 3/4"	32.75	900'	700 sx CIRCULATE
*9 7/8"	7 5/8"	24.00	1600'	300 sx CIRCULATE
7 7/8"	4 1/2"	10.50	5000'	900 sx

Blowout Prevention:

Cameron 10" 900 series BOP with 3400 psi working pressure with 4 1/2" pipe rams.

* Intermediate string will not be set if there is no problems encountered through this section of the hole. If intermediate string is set, will drill out with a 6 1/2" bit under intermediate to total depth.

GAS IS DEDICATED

DEC 29 1981

Posted ID-1
API + NL Book
3-19-82

OIL & GAS
U.S. GEOLOGICAL SURVEY
ROSWELL, NEW MEXICO

IN ABOVE SPACE DESCRIBE PROPOSED PROGRAM: If proposal is to deepen or plug back, give data on present productive zone and proposed new productive zone. If proposal is to drill or deepen directionally, give pertinent data on subsurface locations and measured and true vertical depths. Give blowout preventer program, if any.

24. SIGNED Jerry W. Franklin TITLE Agent DATE 12-21-81

(This space for Federal or State office use)

APPROVED
PERMIT NO. GEORGE H. STEWART

APPROVED BY MAR 16 1982
CONDITIONS OF APPROVAL, IF ANY

FOR
JAMES A. GILLHAM
DISTRICT SUPERVISOR

Post ID-2
4-1-83
Exp. INVENT

NL MEXICO OIL CONSERVATION COMMISSION
WELL LOCATION AND ACREAGE DEDICATION PLAT

Form C-102
Supersedes C-128
Effective 1-1-65

All distances must be from the outer boundaries of the Section.

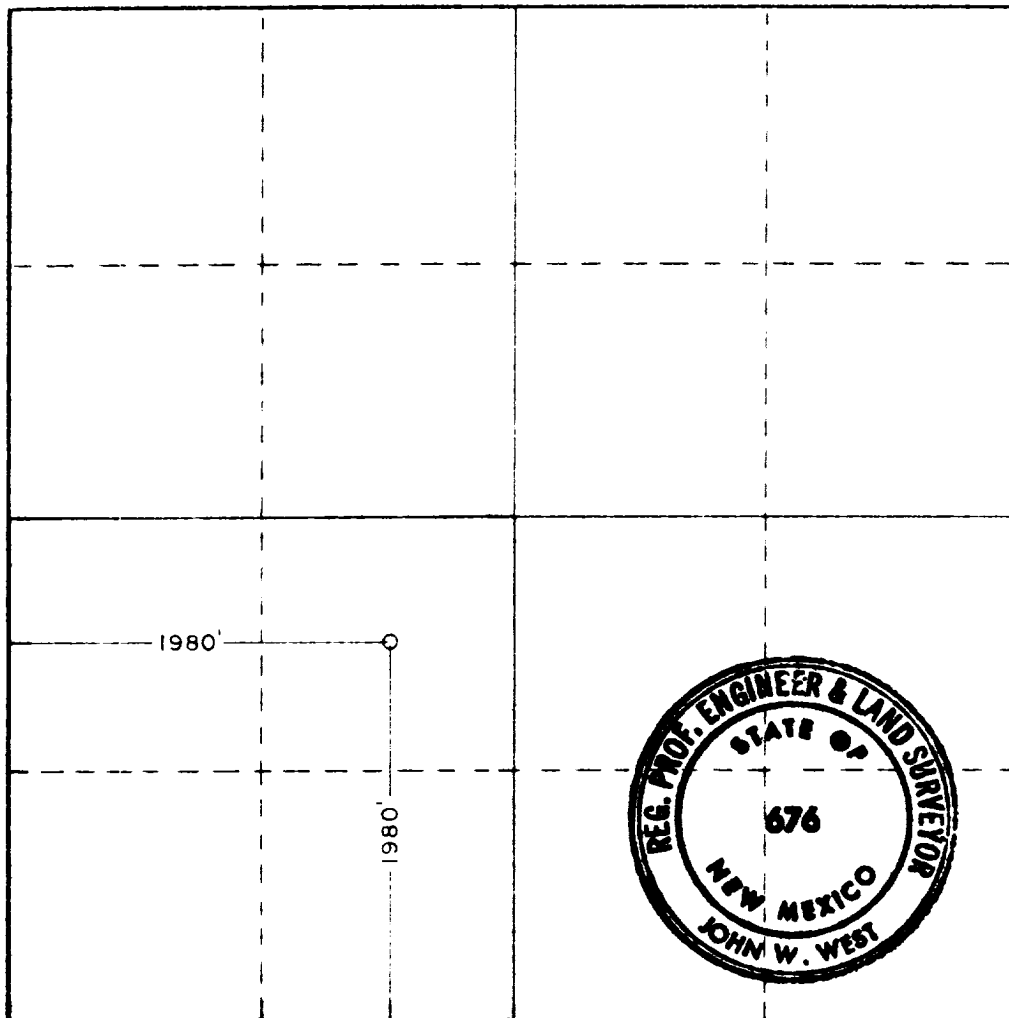
Operator Estoril Producing Corp.			Lease Hoffman Federal		Well No. 6
Post Letter K	Section 12	Township 4 South	Range 23 East	County Chaves	
Actual Footage Location of Well: 1980 feet from the South line and 1980 feet from the West line					
Ground Level Elev. 4161.3'	Producing Formation ABO		Pool WILDCAT Abo	Dedicated Acreage 160 Acres	

1. Outline the acreage dedicated to the subject well by colored pencil or hatchure marks on the plat below.
2. If more than one lease is dedicated to the well, outline each and identify the ownership thereof (both as to working interest and royalty).
3. If more than one lease of different ownership is dedicated to the well, have the interests of all owners been consolidated by communitization, unitization, force-pooling, etc?

☐ Yes ☐ No If answer is "yes," type of consolidation _____

If answer is "no," list the owners and tract descriptions which have actually been consolidated. (Use reverse side of this form if necessary.) _____

No allowable will be assigned to the well until all interests have been consolidated (by communitization, unitization, forced-pooling, or otherwise) or until a non-standard unit, eliminating such interests, has been approved by the Commission.



CERTIFICATION

I hereby certify that the information contained herein is true and complete to the best of my knowledge and belief

Name Jerry W. Franklin
Position AGENT
Company ESTORIL PRODUCING CORP.
Date 12/15/81

I hereby certify that the well location shown on this plat was plotted from field notes of actual surveys made by me or under my supervision, and that the same is true and correct to the best of my knowledge and belief.

Date Surveyed Dec. 2, 1981
Registered Professional Engineer and/or Land Surveyor [Signature]
Certificate No. JOHN W. WEST 676
PATRICK A. ROMERO 6863
Ronald J. Eidson 3239





APPLICATION TO DRILL

ESTORIL PRODUCING CORP.
Hoffman Federal No. 6
1980' FSL & 1980' FWL
Section 12, T-4S, R-23E
Chaves County, New Mexico

The following answers are provided for your consideration in response to your outline under Section II of Bulletin NTL-6:

1. Location: 1980' FSL & 1980' FWL, Section 12, T-4S, R-23E, Chaves County, New Mexico.
2. Elevation Above Sea Level: 4161.3 GR
3. Geologic Name of Surface Formation: Alluvium
4. Drilling Tools & Associated Equipment: Conventional rotary drilling tools using mud for the circulation medium.
5. Proposed Drilling Depth: 5000'
6. Estimated Geological Marker Tops: San Andres 550'; Glorietta 1540'; Abo; 3675'; Wolfcamp 3880'; Penn 4090'; Granite Wash 4775'.
7. Mineral Bearing Formation: Gas bearing at 3750'.
8. Casing Program: (A) Surface Casing: 10 3/4", 32.75# new casing.
*(B) Intermediate Casing: 7 5/8", 24.0# new casing.
(C) Production Casing: 4 1/2", 10.5# new casing.
9. Setting Depth of Casing and Cement for Same: (A) 10 3/4" casing set at 900'. Cement will be circulated to surface using 250 sx of Lite, 3% CaCl followed by 200 sx of Class 'C', 3% CaCl. *(B) 7 5/8" casing set at 1600'. Cement will be circulated to surface using 300 sx of Lite cement. *Intermediate casing will be run and cemented only if problems are encountered from 900'-1600'. (C) 4 1/2" casing set at 5000'. Cement will be brought up to cover the Abo section. Cement with 700 sx of Class 'C', 1/4# Cello Seal, 2% KCL, followed by 200 sx 50-50 Pozmix, .6% CF-9, .3% TF-4 and 3% KCL.
10. Pressure Control Equipment: After drilling to 1600', blowout preventers will be installed. They will be Cameron 10" 900 series BOP with 3400 psi working pressure with 4 1/2" pipe rams. The blowout preventers will be tested to 1000 psi after they are installed.
11. Proposed Circulation Medium: 14 3/4" surface hole to 900': Spud mud containing the following properties; viscosity 32-35 with a mud weight of 9.5 ppg. 9 7/8" intermediate hole to 1600': Drill out under surface casing with brine water. Add paper and surfactant for seepage. If no problems are encountered from 900'-1600', reduce hole size to 7 7/8". 1600'-3600': Brine water. 3600'-5000' TD: Salt mud

11. with a viscosity of 40 containing 3-6% oil with a water loss of 10cc or less to get through the Abo section.
12. Testing, Logging, and Coring Programs: (A) Testing: All testing will be commenced after the well has been drilled and casing set and cemented. (B) Logging: At total depth the following logs will be run; 1. Compensated Neutron-Formation Density with Gamma Ray and Caliper. 2. Dual Laterolog-RXO. (C) No coring is anticipated.
13. Potential Hazards:: No abnormal pressure or temperature zones are anticipated..
14. Anticipated Starting Date and Duration of Operations: Jan 4-14 for drilling operations. Completion to proceed with the availability of a completion unit.
15. Other Facets of Operations: After running 4 1/2" casing, cased hole gamma ray correlation logs will be run from total depth over and above the zones of interest. There might be zones of interest below the Abo section that might be tested before the Abo section is tested.

30' FORT SUMNER 4.2 MI.
3.9 MI. TO N. MEX. 20

548000m E

R 23 E R 24 E

27'30"

51

5152 III
(LOVELAD)

DE BACA CO
CHAVES CO

Cottonwood Well

South

Sacra Ranch

Di Dager Well

Highwater Well

Swallow

Headwater Spring

Wylie Draw

Draw

