

NM OIL CONS. COMMISSION

Drawer 7

Artesia, NM 88210

UNITED STATES  
DEPARTMENT OF THE INTERIOR  
GEOLOGICAL SURVEY

SUBMIT IN TRACATE\*

For instructions on

JUN 18 1982

Form approved.  
Budget Bureau No. 42-R1425.

30-005-61663

5. LEASE DESIGNATION AND SERIAL NO.  
NM-30391

6. IF INDIAN, ALLOTTEE OR TRIBE NAME

7. UNIT AGREEMENT NAME

8. FARM OR LEASE NAME

Grafa "RW" Federal

9. WELL NO.

10. FIELD AND POOL, OR WILDCAT

Unders. Pecos Slope Abo

11. SEC., T., R., M., OR BLK.  
AND SURVEY OR AREA

Sec. 29-T5S-R24E

12. COUNTY OR PARISH 13. STATE

Chaves NM

## 1a. TYPE OF WORK

DRILL ☒DEEPEN ☐PLUG BACK ☐

## b. TYPE OF WELL

OIL  
WELL ☐GAS  
WELL ☒

OTHER

SINGLE  
ZONE ☐MULTIPLE  
ZONE ☐

## 2. NAME OF OPERATOR

Yates Petroleum Corporation

## 3. ADDRESS OF OPERATOR

207 S. 4th, Artesia, New Mexico 88210

## 4. LOCATION OF WELL (Report location clearly and in accordance with any State requirements.)

At surface  
1980' FNL and 1980' FWL

At proposed prod. zone

same

## 14. DISTANCE IN MILES AND DIRECTION FROM NEAREST TOWN OR POST OFFICE\*

Approximately 31 miles NNE of Roswell, New Mexico

## 15. DISTANCE FROM PROPOSED\*

LOCATION TO NEAREST  
PROPERTY OR LEASE LINE, FT.  
(Also to nearest drig. unit line, if any)

1980'

## 16. NO. OF ACRES IN LEASE

520

17. NO. OF ACRES ASSIGNED  
TO THIS WELL

160

## 18. DISTANCE FROM PROPOSED LOCATION\*

TO NEAREST WELL, DRILLING, COMPLETED,  
OR APPLIED FOR, ON THIS LEASE, FT.

## 19. PROPOSED DEPTH

4100'

## 20. ROTARY OR CABLE TOOLS

Rotary

## 21. ELEVATIONS (Show whether DF, RT, GR, etc.)

4114.6' GL

## 22. APPROX. DATE WORK WILL START\*

ASAP

## 23.

## PROPOSED CASING AND CEMENTING PROGRAM

SIZE OF HOLE	SIZE OF CASING	WEIGHT PER FOOT	SETTING DEPTH	QUANTITY OF CEMENT
14 3/4"	10 3/4"	40.5# J-55	920'	600 sx circulated
7 7/8"	4 1/2"	9.5#	TD	350 sx

We propose to drill and test the Abo and intermediate formations. Approximately 920' of surface casing will be set and cement circulated to shut off gravel and caving. If needed (lost circulation) 8 5/8" intermediate casing will be run to 1500' and cemented with enough cement calculated to tie back into the surface casing. If commercial, production casing will be run and cemented with adequate cover, perforated and stimulated as needed for production.

MUD PROGRAM: FW gel and LCM to 920', Brine to 3200', Brine & KCL water to TD.

BOP PROGRAM: BOP's will be installed at the offset and tested daily.

GAS NOT DEDICATED.

IN ABOVE SPACE DESCRIBE PROPOSED PROGRAM: If proposal is to deepen or plug back, give data on present productive zone and proposed new productive zone. If proposal is to drill or deepen directionally, give pertinent data on subsurface locations and measured and true vertical depths. Give blowout preventer program, if any.

## 24.

SIGNED

TITLE Regulatory Coordinator

DATE

(This space for Federal or State use)

(Orig. Sgd.) GEORGE H. STEWART

PERMIT NO.

APPROVAL DATE

APPROVED BY

TITLE

DATE

CONDITIONS OF APPROVAL, IF ANY:

JAMES A. GILLHAM  
DISTRICT SUPERVISOR

JUN 14 1982

NEW MEXICO OIL CONSERVATION COMMISSION  
W LOCATION AND ACREAGE DEDICATION PLAT

Form C-102  
Supersedes C-128  
Effective 1-1-65

All distances must be from the outer boundaries of the Section.

Operator YATES PETROLEUM CORPORATION		Lease Grafa "RW" Federal		Well No. 3
Unit Letter F	Section 29	Township 5 South	Range 24 East	County Chaves

Actual Footage Location of Well:

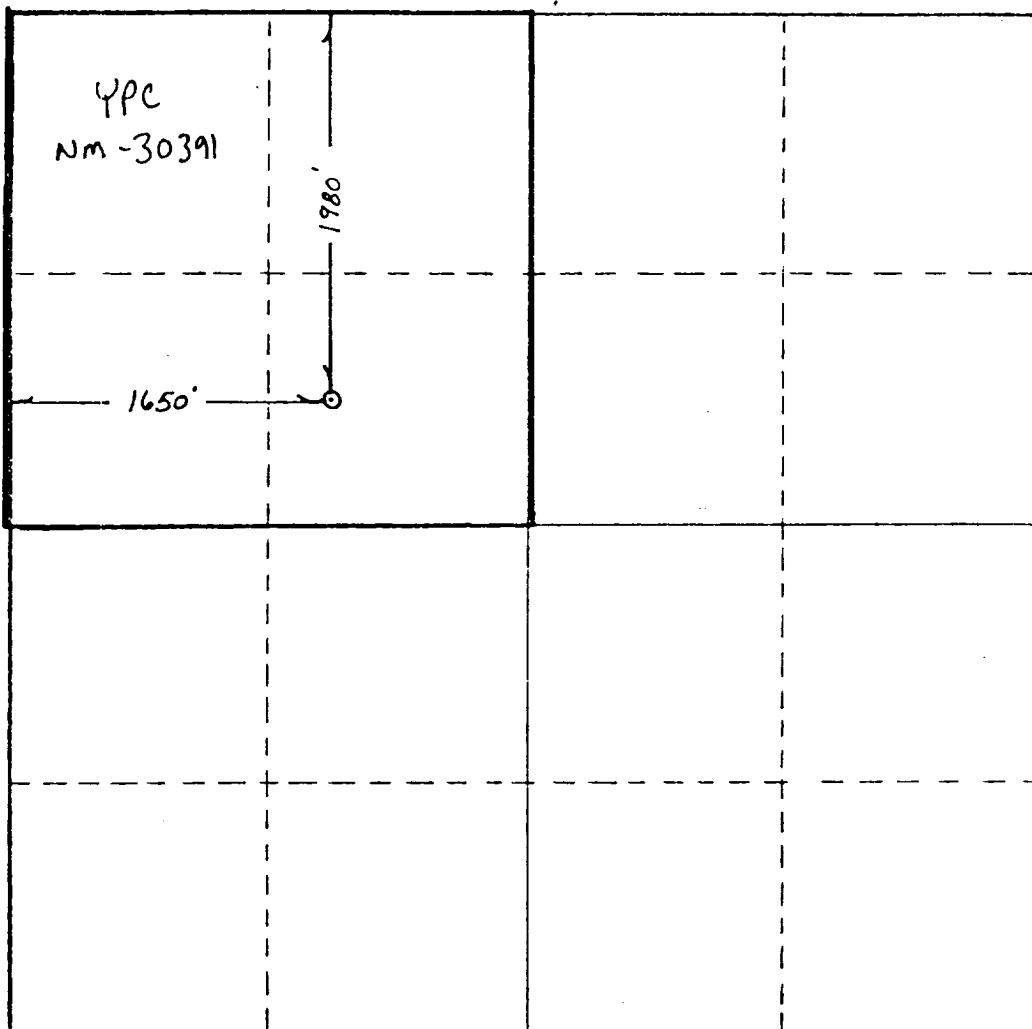
1980'	feet from the	North	line and	1650'	feet from the	West	line	
Ground Level Elev. 4110.5'	Producing Formation Abo		Pool <del>Under</del> Pecos Slope Abo		Dedicated Acreage: 160			Acres

1. Outline the acreage dedicated to the subject well by colored pencil or hatchure marks on the plat below.
2. If more than one lease is dedicated to the well, outline each and identify the ownership thereof (both as to working interest and royalty).
3. If more than one lease of different ownership is dedicated to the well, have the interests of all owners been consolidated by communitization, unitization, force-pooling, etc?

☐ Yes ☐ No If answer is "yes," type of consolidation \_\_\_\_\_

If answer is "no," list the owners and tract descriptions which have actually been consolidated. (Use reverse side of this form if necessary.) \_\_\_\_\_

No allowable will be assigned to the well until all interests have been consolidated (by communitization, unitization, forced-pooling, or otherwise) or until a non-standard unit, eliminating such interests, has been approved by the Commission.



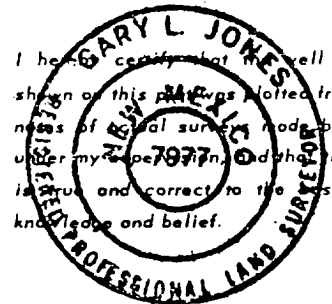
CERTIFICATION

I hereby certify that the information contained herein is true and complete to the best of my knowledge and belief.

*Ken Beardemphl*

Name  
Ken Beardemphl  
Position  
Regulatory Coordinator  
Company  
Yates Petroleum Corp.  
Date  
6/10/82

I hereby certify that the well location shown on this plat was plotted from field notes of a trial survey made by me or under my supervision, and that the same is true and correct to the best of my knowledge and belief.

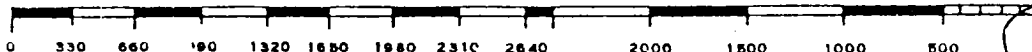


Date Surveyed  
May 28, 1982  
Registered Professional Engineer  
and/or Land Surveyor

*Dan Jones*

Certificate No.

7977



YATES PETROLEUM CORPORATION

Trapa "RW" Federal #3  
1980' FNL and 1980' FWL  
Section 29-T5S-R24E

In conjunction with Form 9-331C, Application for Permit to Drill subject well, Yates Petroleum Corporation submits the following ten items of pertinent information in accordance with USGS requirements.

1. The geologic surface formation is sandy alluvium.

2. The estimated tops of geologic markers are as follows:

San Andres	384'
Glorieta	1493'
Fullerton	2897'
Abo	3539'
TD	4100'

3. The estimated depths at which anticipated water, oil or gas formations are expected to be encountered:

Water: Approximately 250-350'

Oil or Gas: Abo 3560'

4. Proposed Casing Program: See Form 9-331C.

5. Pressure Control Equipment: See Form 9-331C and Exhibit B.

6. Mud Program: See Form 9-331C.

7. Auxiliary Equipment: Kelly Cock; pit level indicators and flow sensor equipment;  
sub with full-opening valve on floor, drill pipe connection.

8. Testing, Logging and Coring Program:

Samples: Surface casing to TD.

DST's: As warranted.

Coring: None

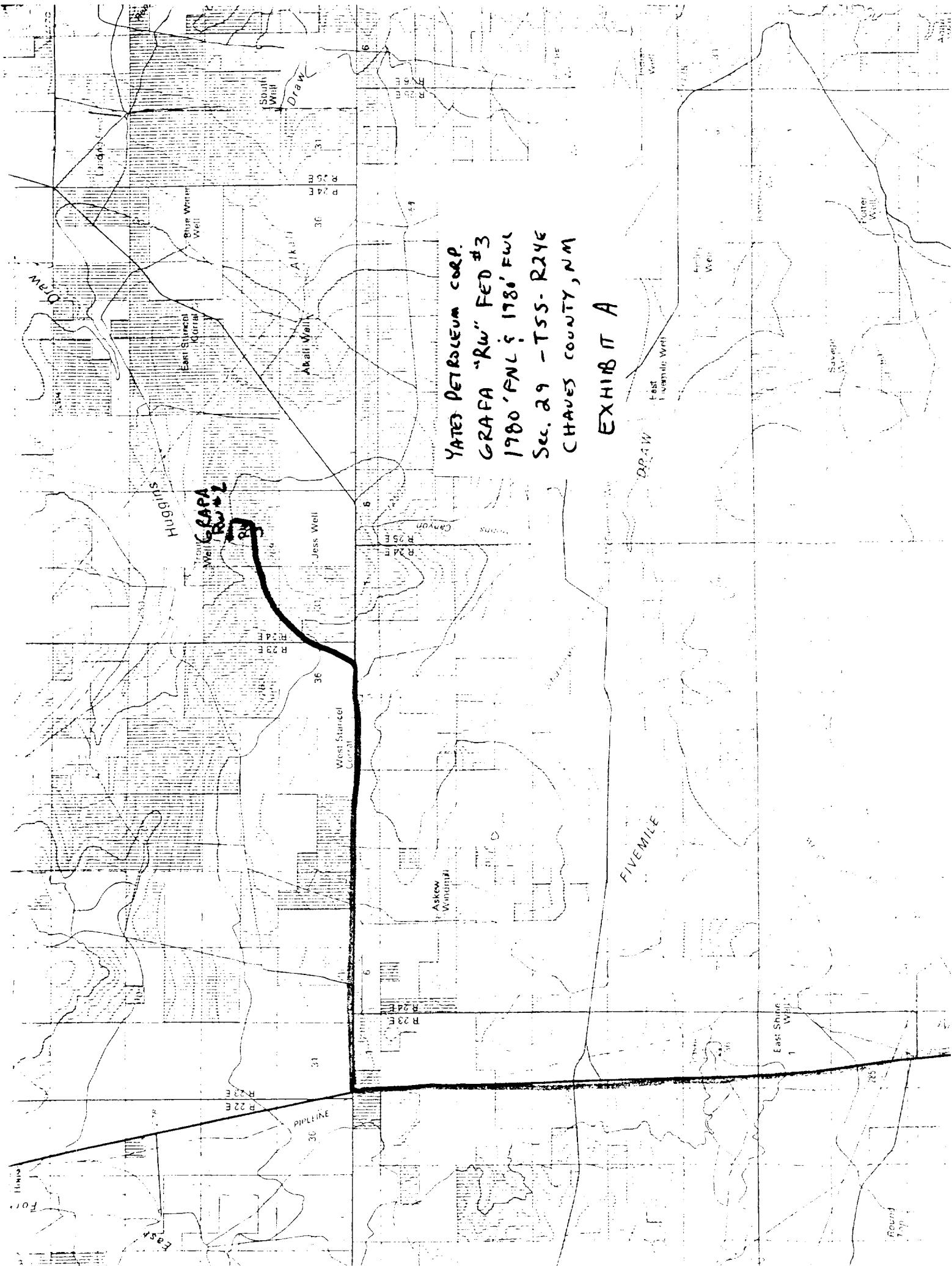
Logging: CNL-FDC TD to casing w/GR-CNL to surface & DLL from TD to csg.

9. No abnormal pressures or temperatures are anticipated.

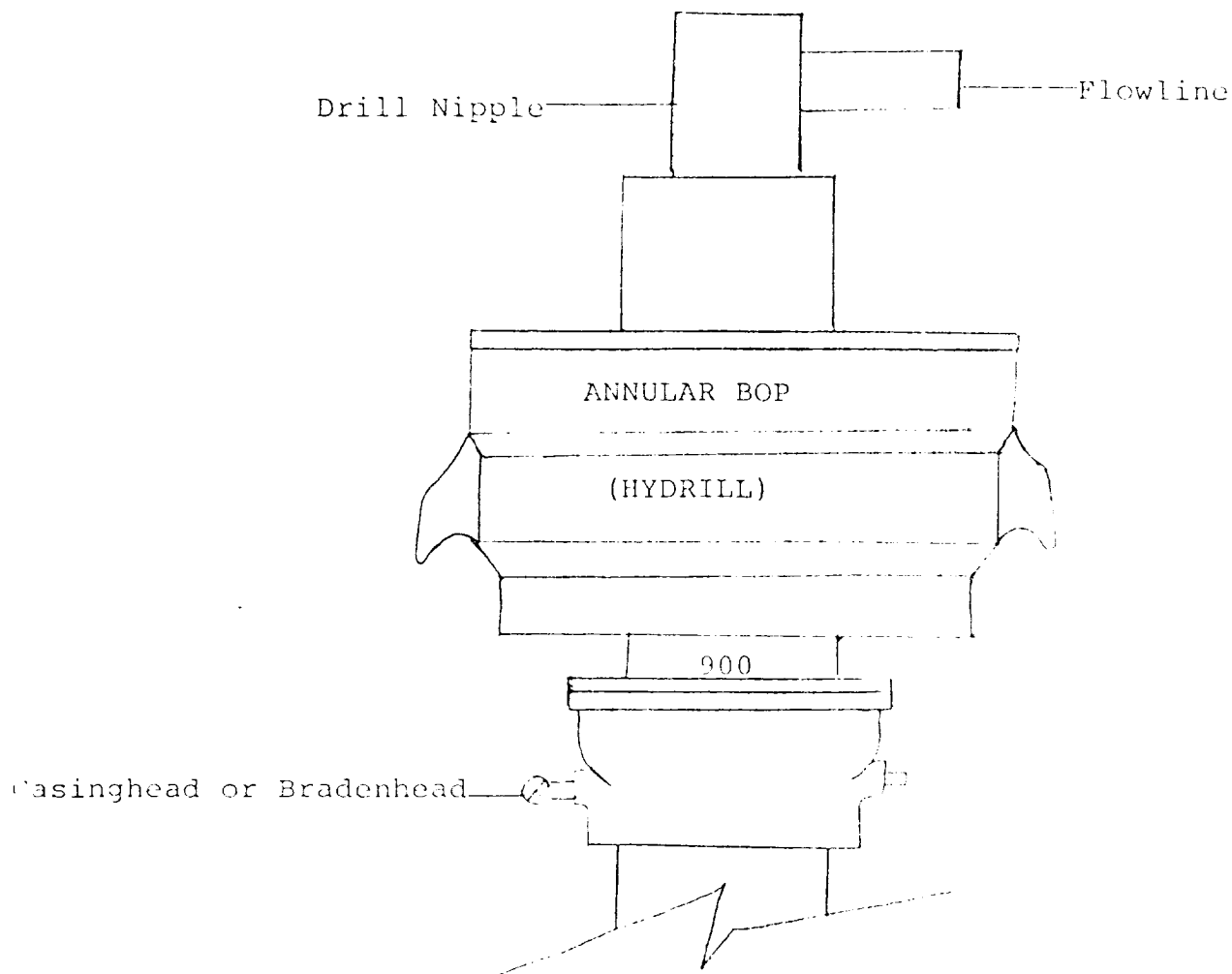
10. Anticipated starting date: As soon as possible after approval.

YATES PETROLEUM CORP.  
GRAFA "RW" FED #3  
1980' FNL & 1780' FWL  
SEC. 29 - T5S-R24E  
CHAVES COUNTY, NM

EXHIBIT A



# -Exhibit B



## THE FOLLOWING CONSTITUTE MINIMUM BLOWOUT PREVENTER REQUIREMENTS

1. All preventers to be hydraulically operated with secondary manual controls installed prior to drilling out from under casing.
2. All connections from operating manifolds to preventers to be all steel. Hole or tube a minimum of one inch in diameter.
3. The available closing pressure shall be at least 15% in excess of that required with sufficient volume to operate the BOP's.
4. All connections to and from preventer to have a pressure rating equivalent to that of the BOP's.
5. Hole must be kept filled on trips below intermediate casing. Operator not responsible for blowouts resulting from not keeping hole full.

YATES PETROLEUM CORPORATION

