

NM OIL CONS. COMMISSION

Draw 00

Artesia, NM 88210

SUBMIT IN TRI. DATE*

(Other instructions on reverse side)

Form approved.
Budget Bureau No. 42-R1425.

Form 9-331 C
(May 1963)

UNITED STATES
DEPARTMENT OF THE INTERIOR
GEOLOGICAL SURVEY

APPLICATION FOR PERMIT TO DRILL, DEEPEN, OR PLUG BACK

1a. TYPE OF WORK

DRILL ☒

DEEPEN ☐

PLUG BACK ☐

b. TYPE OF WELL

OIL WELL ☐

GAS WELL ☒

OTHER

SINGLE ZONE ☒

MULTIPLE ZONE ☐

2. NAME OF OPERATOR

MESA PETROLEUM CO.

3. ADDRESS OF OPERATOR

1000 VAUGHN BUILDING/MIDLAND, TEXAS 79701-4493

4. LOCATION OF WELL (Report location clearly and in accordance with any State requirements.)

At surface

1434' FNL & 660' FEL SE 1/4 NE 1/4 H

At proposed prod. zone

SAME

14. DISTANCE IN MILES AND DIRECTION FROM NEAREST TOWN OR POST OFFICE*

26 miles Northwest of Roswell, New Mexico

15. DISTANCE FROM PROPOSED*

LOCATION TO NEAREST PROPERTY OR LEASE LINE, FT.
(Also to nearest drig. unit line, if any)

660'/660'

18. DISTANCE FROM PROPOSED LOCATION* TO NEAREST WELL, DRILLING, COMPLETED, OR APPLIED FOR, ON THIS LEASE, FT.

1500'

16. NO. OF ACRES IN LEASE

2441.2

19. PROPOSED DEPTH

3400'

17. NO. OF ACRES ASSIGNED TO THIS WELL

160

20. ROTARY OR CABLE TOOLS

ROTARY

21. ELEVATIONS (Show whether DF, RT, GR, etc.)

3965' GR

22. APPROX. DATE WORK WILL START*

JULY 17, 1982

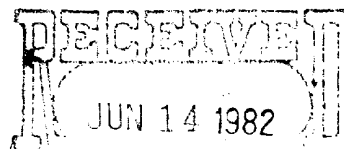
23.

PROPOSED CASING AND CEMENTING PROGRAM

SIZE OF HOLE	SIZE OF CASING	WEIGHT PER FOOT	SETTING DEPTH	QUANTITY OF CEMENT
12 1/4"	8 5/8"	24#	1400'	700/300 SURFACE
7 7/8"	4 1/2"	10.5#	3400'	300 COVER ALL PAY

Propose to drill 12 1/4" hole to approximately 1400' to set 8 5/8" surface casing and cement to surface. Will nipple up ram type BOP's and reduce hole to 7 7/8" to drill to total depth. Drilling medium will be air, foam, or mud as required. After log evaluation, 4 1/2" casing may be run and cemented with sufficient kinds and amounts to isolate and seal off any fresh water, oil or gas zones encountered.

Operator's Gas Sales are dedicated.



OIL & GAS
U.S. GEOLOGICAL SURVEY
ROSWELL, NEW MEXICO

XC: MMS (7), TLS, CEN RCDS, ACCTG, MEC, LAND, ROSWELL, REM, FILE, (PARTNERS)

IN ABOVE SPACE DESCRIBE PROPOSED PROGRAM: If proposal is to deepen or plug back, give data on present productive zone and proposed new productive zone. If proposal is to drill or deepen directionally, give pertinent data on subsurface locations and measured and true vertical depths. Give blowout preventer program, if any.

24.

SIGNED

R. E. Martin

TITLE

REGULATORY COORDINATOR

DATE

6-11-82

(This space for Federal or State office use)

PERMIT NO.

(Orig. Sgd.) GEORGE H. STEWART

APPROVAL DATE

APPROVED BY

1111 10 1982

TITLE

DATE

CONDITIONS OF APPROVAL, IF ANY:

*fasted ID-7
API & NL Bank
7-23-82*

NSL-1549

OIL CONSERVATION DIVISION

STATE OF NEW MEXICO
ENERGY AND MINERALS DEPARTMENT

P. O. BOX 2088

SANTA FE, NEW MEXICO 8750

Form C-102
Revised 10-1-78

All distances must be from the outer boundaries of the Section.

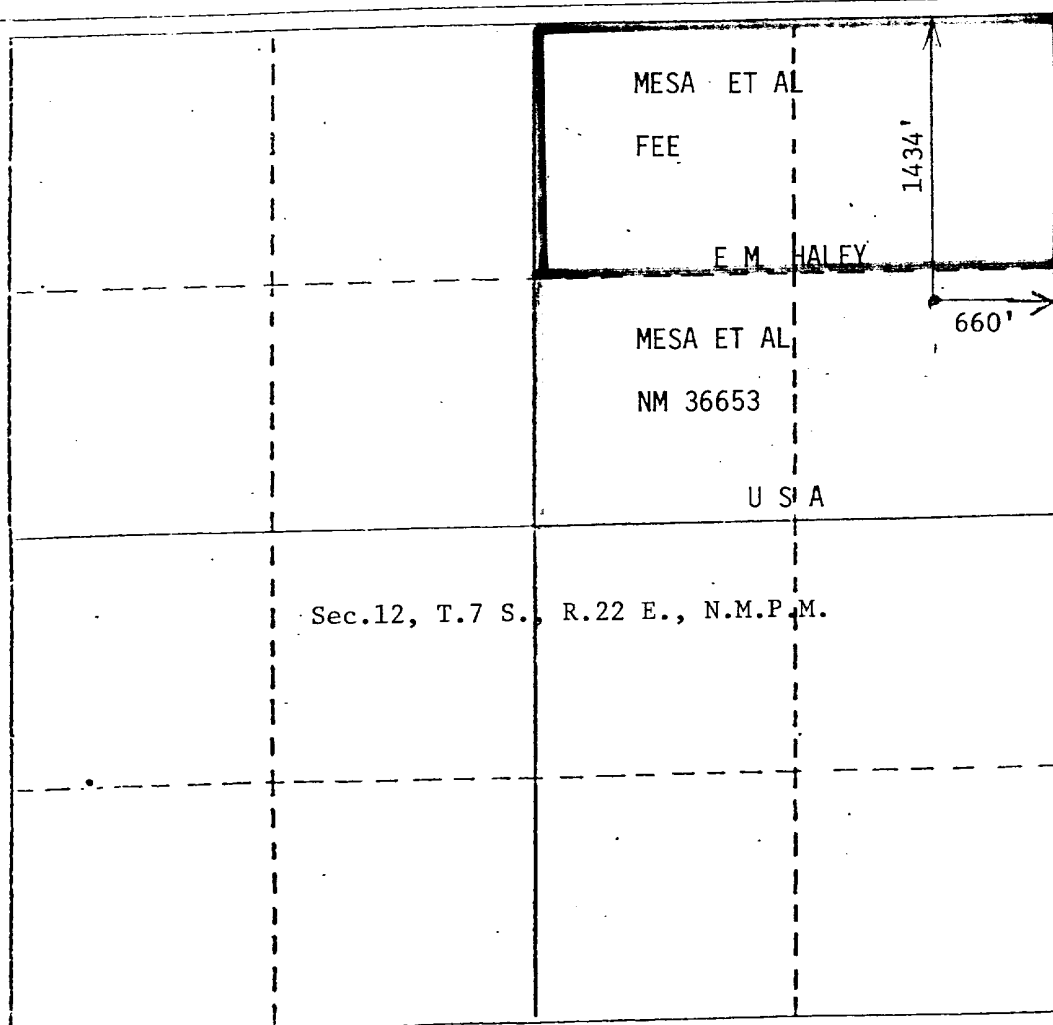
Operator Mesa Petroleum Co.			Lease Carol Federal Com		Well No. #5
Unit Letter H	Section 12	Township 7 South	Range 22 East	County Chaves	
Actual Postage Location of Well: 1434 feet from the North line and 660 feet from the East line					
Ground Level Elev. 3965	Producing Formation ABO	Pool UNDESIGNATED		Dedicated Acreage: NE/4 160 Acres	

1. Outline the acreage dedicated to the subject well by colored pencil or hachure marks on the plat below.
2. If more than one lease is dedicated to the well, outline each and identify the ownership thereof (both as to working interest and royalty).
3. If more than one lease of different ownership is dedicated to the well, have the interests of all owners been consolidated by communitization, unitization, force-pooling, etc?

☐ Yes ☐ No If answer is "yes," type of consolidation COMMUNITIZATION IN PROGRESS

If answer is "no," list the owners and tract descriptions which have actually been consolidated. (Use reverse side of this form if necessary.)

No allowable will be assigned to the well until all interests have been consolidated (by communitization, unitization, forced-pooling, or otherwise) or until a non-standard unit, eliminating such interests, has been approved by the Division.



CERTIFICATION

I hereby certify that the information contained herein is true and complete to the best of my knowledge and belief.

R. E. Mathis

Name

R. E. MATHIS

Position

REGULATORY COORDINATOR

Company

MESA PETROLEUM CO.

Date

JUNE 11, 1982

I hereby certify that the well location shown on this plat was plotted from field notes of actual surveys made by me or under my supervision, and that the same is true and correct to the best of my knowledge and belief.

Date Surveyed

June 9, 1982

Registered Professional Engineer and/or Land Surveyor

John D. Jaquess
John D. Jaquess, P.E. & L.S.
Certificate No. 6290

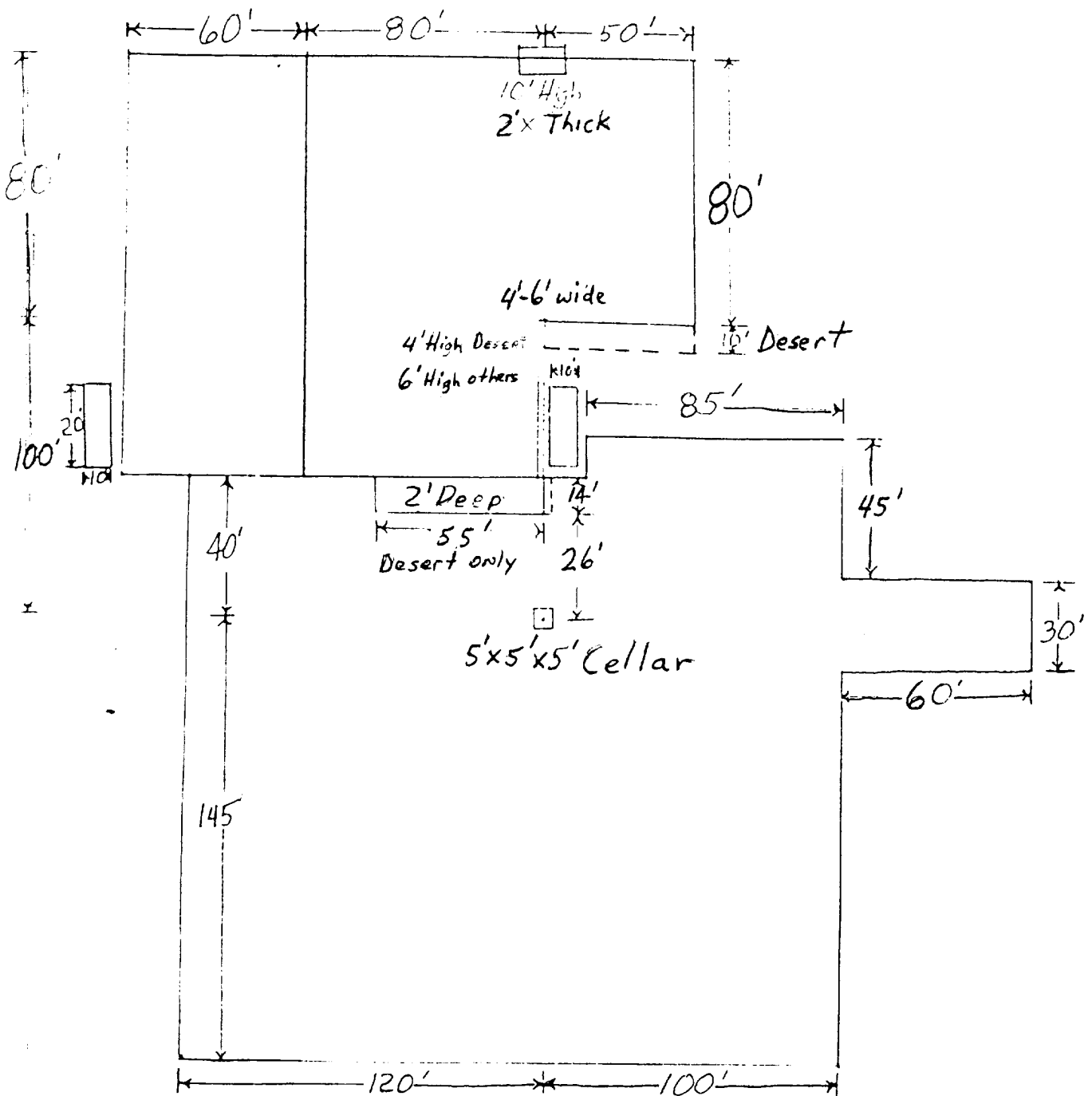
0 330 660 990 1320 1650 1980 2310 2640 2970 3300 3630 3960 4290 4620 4950 5280 5610 5940 6270 6600

MESA
PETROLEUM CO.
PERMIAN BASIN DIVISION

TOPOGRAPHIC FEATURES FOR
PROPOSED CAROL FED COM #5

11/20/2001

10-1-77: 12:00
2015



6"-8" Watered & Compacted Caliche
ON PAD & ROAD IF NEEDED



MESA
PETROLEUM CO.
PERMAN BASIN DIVISION



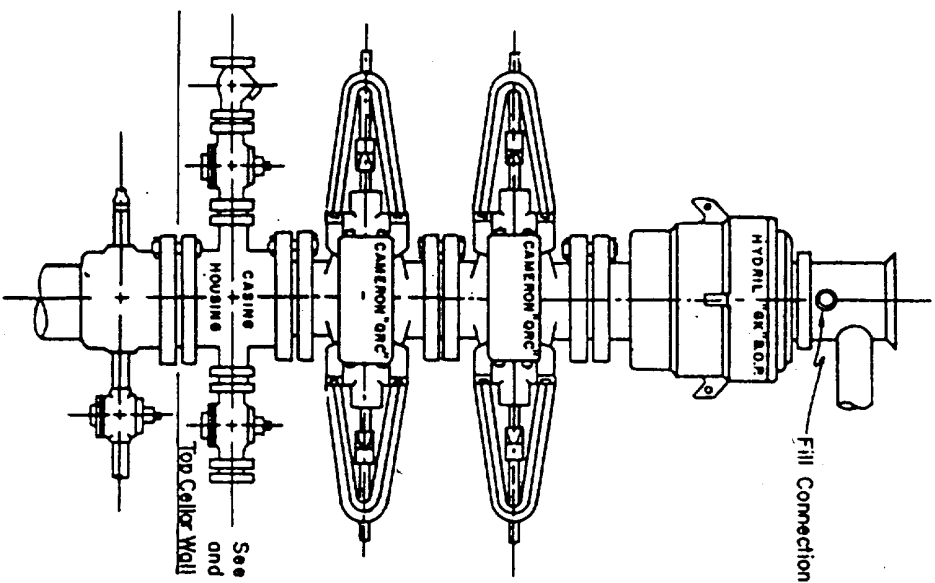
EXHIBIT V

FOR PROPOSED CAROL FED COM #5

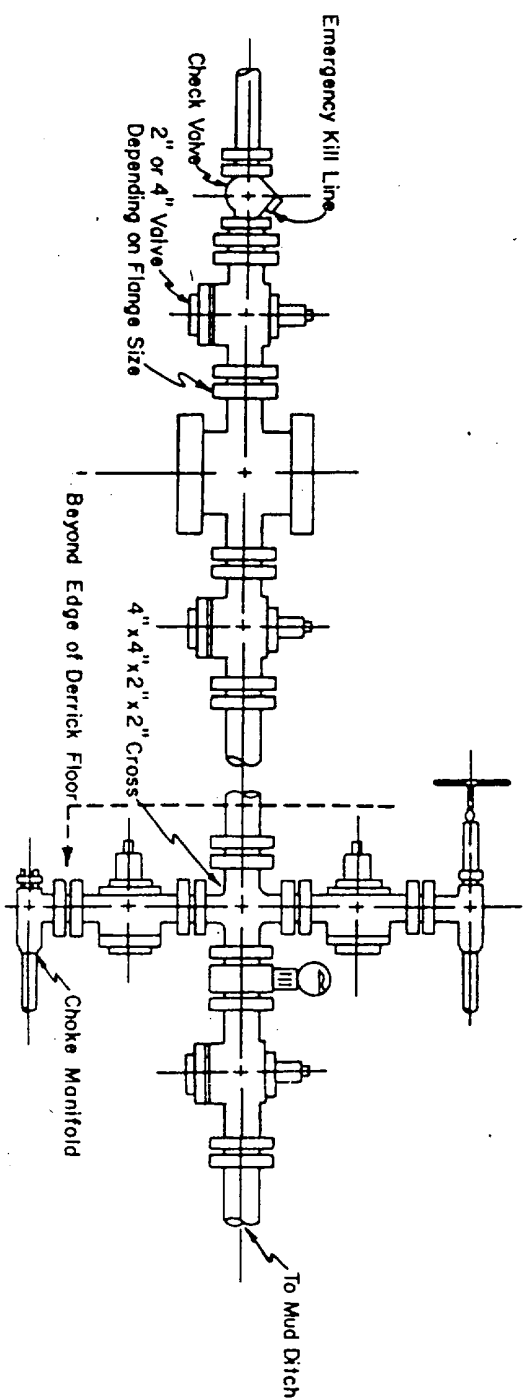
BY:

DRAWN BY:

Blow-out Preventers hydril and choke manifold are all 900 Series



3,000 PSI WORKING PRESSURE
BLOW-OUT PREVENTER HOOK-UP




3,000 PSI WORKING PRESSURE
KILL, CHOKE, AND FILL CONNECTIONS


DETAIL OF 4" FLOW LINE CHOKE ASSEMBLY

Minimum assembly for 3,000 PSI working pressure will consist of three preventers.
The bottom and middle preventers may be Cameron.

NOTE: HYDRIL not installed on shallow-low pressure wells.
RAM type BOPs are API 10" X 3000 PSI



MESA
 PETROLEUM CO.
PERMIAN BASIN DIVISION



E

X

H

I

B

I

T

V

I

DATE:

SCALE:

10 1/2" X 14 1/2" X 1/4"

SCALE: