

SUBMIT IN TRIPPLICATE*
(Other instructions on
reverse side)Form approved.
Budget Bureau No. 42-R1425.UNITED STATES
DEPARTMENT OF THE INTERIOR
GEOLOGICAL SURVEYO. C. D.
ARTESIA OFFICE

APPLICATION FOR PERMIT TO DRILL, DEEPEN, OR PLUG BACK

1a. TYPE OF WORK

DRILL ☒DEEPEN ☐PLUG BACK ☐

b. TYPE OF WELL

OIL
WELL ☐GAS
WELL ☒

OTHER

2. NAME OF OPERATOR

Read & Stevens, Inc.

3. ADDRESS OF OPERATOR

P. O. Box 1518 Roswell, NM 88201

4. LOCATION OF WELL (Report location clearly and in accordance with any State requirements.)*

At surface

1980' FNL and 1980' FEL

At proposed prod. zone

Same

14. DISTANCE IN MILES AND DIRECTION FROM NEAREST TOWN OR POST OFFICE*

45 miles northeast of Roswell, NM

15. DISTANCE FROM PROPOSED*

LOCATION TO NEAREST
PROPERTY OR LEASE LINE, FT.
(Also to nearest drlg. unit line, if any)

1980'

18. DISTANCE FROM PROPOSED LOCATION*

TO NEAREST WELL, DRILLING, COMPLETED,
OR APPLIED FOR, ON THIS LEASE, FT.

3,500'

21. ELEVATIONS (Show whether DF, RT, GR, etc.)

3872 GR

23. PROPOSED CASING AND CEMENTING PROGRAM

SIZE OF HOLE	SIZE OF CASING	WEIGHT PER FOOT	SETTING DEPTH	QUANTITY OF CEMENT
17 1/2"	13 3/8"	54.4#	40'	5 yds ready mix
11"	8 5/8"	24.0#	1080'	400 Sx "C" circulated
7 7/8"	4 1/2"	10.5#	6350'	500 Sx Class "C"- Prod. Formation 220 Sx "C" 500' Below 8 5/8" to 200' into 8 5/8"

Mud Program:

- 0' - 30' Spud Mud.
30' - 1,080' Fresh water and native mud. Mud wt. 8.4 - 9#, Vis. 30-32, no WL control. If seepage is lost, add lost circulation material.
1,080' - 4,300' Brine and native mud, salt gel and starch.
4,300' - 5,500' Salt water gel and brine, Vis. 30-40, Wt. 9.0 - 10.0#, no WL control, add oil as needed.
5,500' - 6,350' Salt water gel, brine, Vis. 35 - 50, Wt. 10#, plus Flosal, salt gel, and starch.

BOP Program:

One 3,000# Shaffer Type "LWS" double BOP, with one 90-115 Melco closing unit,
90 gal. capacity.

Gas is not dedicated.

IN ABOVE SPACE DESCRIBE PROPOSED PROGRAM: If proposal is to deepen or plug back, give data on present productive zone and proposed new productive zone. If proposal is to drill or deepen directionally, give pertinent data on subsurface locations and measured and true vertical depths. Give blowout preventer program, if any.

24.

SIGNED

George H. Stewart

TITLE

Agent for:

Read & Stevens, Inc.

DATE October 22, 1982

(This space for Federal or State office use)

PERMIT NO.

(Orig. Sgd.) GEORGE H. STEWART

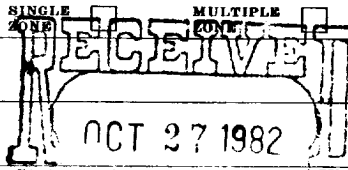
APPROVAL DATE

APPROVED BY

TITLE

DATE

CONDITIONS OF APPROVAL, IF ANY:



NOV 1 1982

Form C-102
Revised 10-1-78

All distances must be from the outer boundaries of the Section.

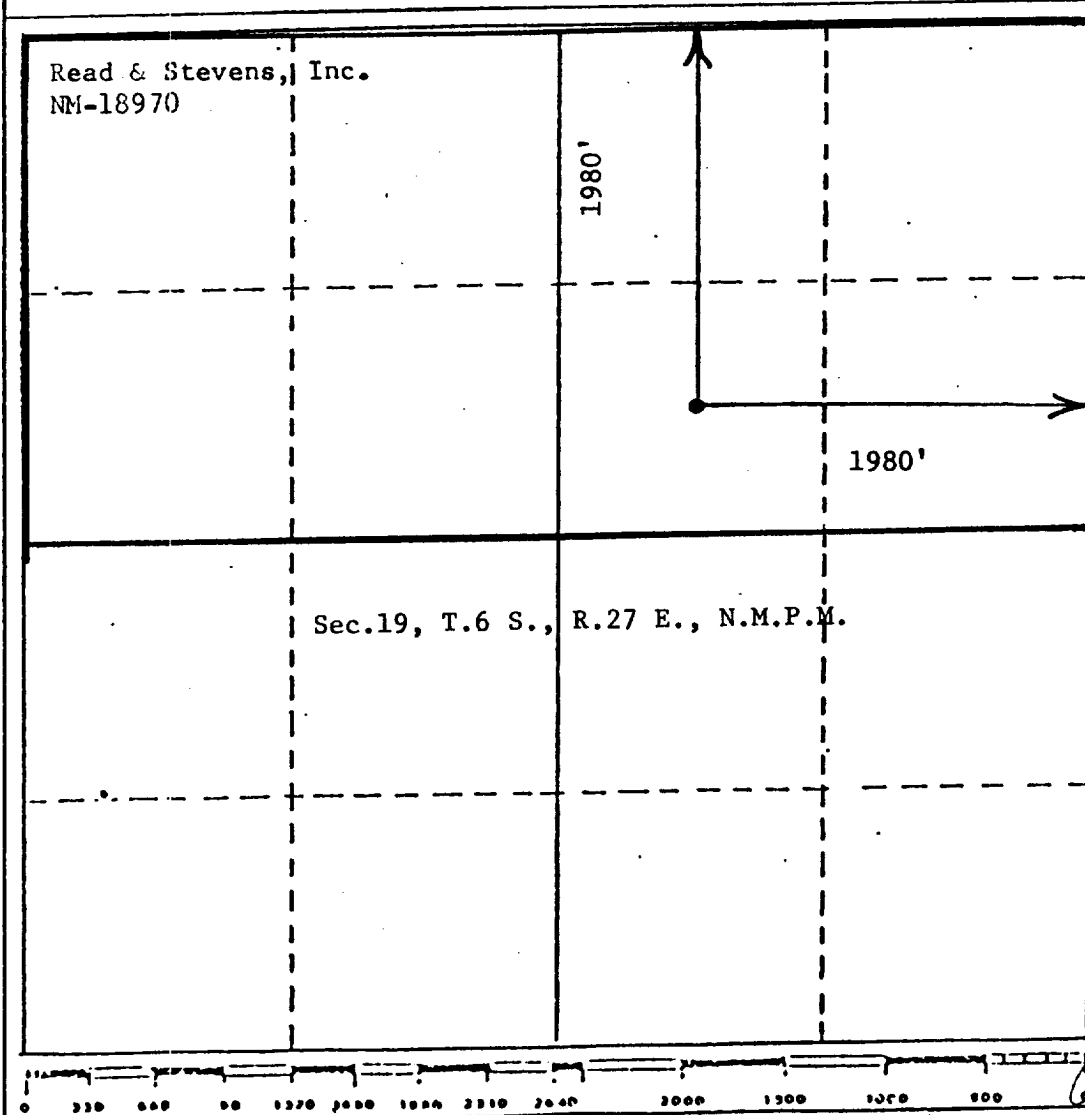
Operator Read & Stevens, Inc.			Lease West Haystack Federal			ARTESIA, OFFICE		Well No. #4
Unit Letter G	Section 19	Township 6 South	Range 27 East	County Chaves				
Actual Footage Location of Well:								
1980 feet from the North line and			1980 feet from the East line					
Ground Level Elev. 3872	Producing Formation Cisco		Pool Wildcat			Dedicated Acreage: 320 Acres		

1. Outline the acreage dedicated to the subject well by colored pencil or hachure marks on the plat below.
2. If more than one lease is dedicated to the well, outline each and identify the ownership thereof (both as to working interest and royalty).
3. If more than one lease of different ownership is dedicated to the well, have the interests of all owners been consolidated by communitization, unitization, force-pooling, etc?

☐ Yes ☐ No If answer is "yes," type of consolidation _____

If answer is "no," list the owners and tract descriptions which have actually been consolidated. (Use reverse side of this form if necessary.) _____

No allowable will be assigned to the well until all interests have been consolidated (by communitization, unitization, forced-pooling, or otherwise) or until a non-standard unit, eliminating such interests, has been approved by the Division.



CERTIFICATION

I hereby certify that the information contained herein is true and complete to the best of my knowledge and belief.

George R. Smith

Name

George R. Smith

Position

Agent for:

Company

Read & Stevens, Inc.

Date

October 22, 1982

I hereby certify that the well location shown on this plat was plotted from field notes of actual surveys made by me or under my supervision, and that the same is true and correct to the best of my knowledge and belief.

Date Surveyed
October 16, 1982

Registered Professional Engineer
and/or Licensed Surveyor

John D. Jaquess
John D. Jaquess, P.E. & L.S.

Certificate No.

6290

APPLICATION FOR DRILLING

RECEIVED

READ & STEVENS, INC.
West Haystack Federal, Well No. 4
1980' FNL & 1980' FEL, Sec. 19-T6S-R27E
Chaves County, New Mexico
Lease No.: NM-18970
(Exploratory Well)

NOV 1 1982

O. C. D.
ARTESIA, OFFICE

In conjunction with Form 9-331C, Application for Permit to Drill subject well, Read & Stevens, Inc. submits the following items of pertinent information in accordance with MMS requirements:

1. The geologic surface formation is Permian with quaternary alluvium and other surficial deposits.
2. The estimated tops of geologic markers are as follows:

Queen	630'	Abo	4281'
Penrose	715'	Wolfcamp	4991'
San Andres	1004'	Cisco	5594'
Glorieta	2184'	T.D.	6350'
Tubb	3604'		
3. The estimated depth at which anticipated water, oil or gas formations are expected to be encountered:

Water: Surface water at approximately 200 - 300 feet.

Gas: Abo between 4290' and 4690'.
Cisco between 5700' - 5750'.

Oil: Possibly the San Andres between 1050' and 1100'.
4. Proposed Casing Program: See Form 9-331C.
5. Pressure Control Equipment: See Form 9-331C and Exhibit "E".
6. Mud Program: See Form 9-331C.
7. Auxiliary Equipment: Blowout preventer, gas detector, kelly cock, pit level monitor, flow sensors and stabbing valve.
8. Testing, Logging and Coring Program:

Logging: Gamma Ray:	Surface to T.D.
FDC/CNL:	Int. Csg. to T.D.
DLL & MLL:	Int. Csg. to T.D.

Drill Stem Tests: None planned.

Coring: None planned.
9. No abnormal pressures or temperatures are anticipated. In the event abnormal pressures are encountered, the proposed mud program will be modified to increase the mud weight.
10. Anticipated starting date: November 15, 1982.
Anticipated completion of drilling operations: Approximately two weeks.

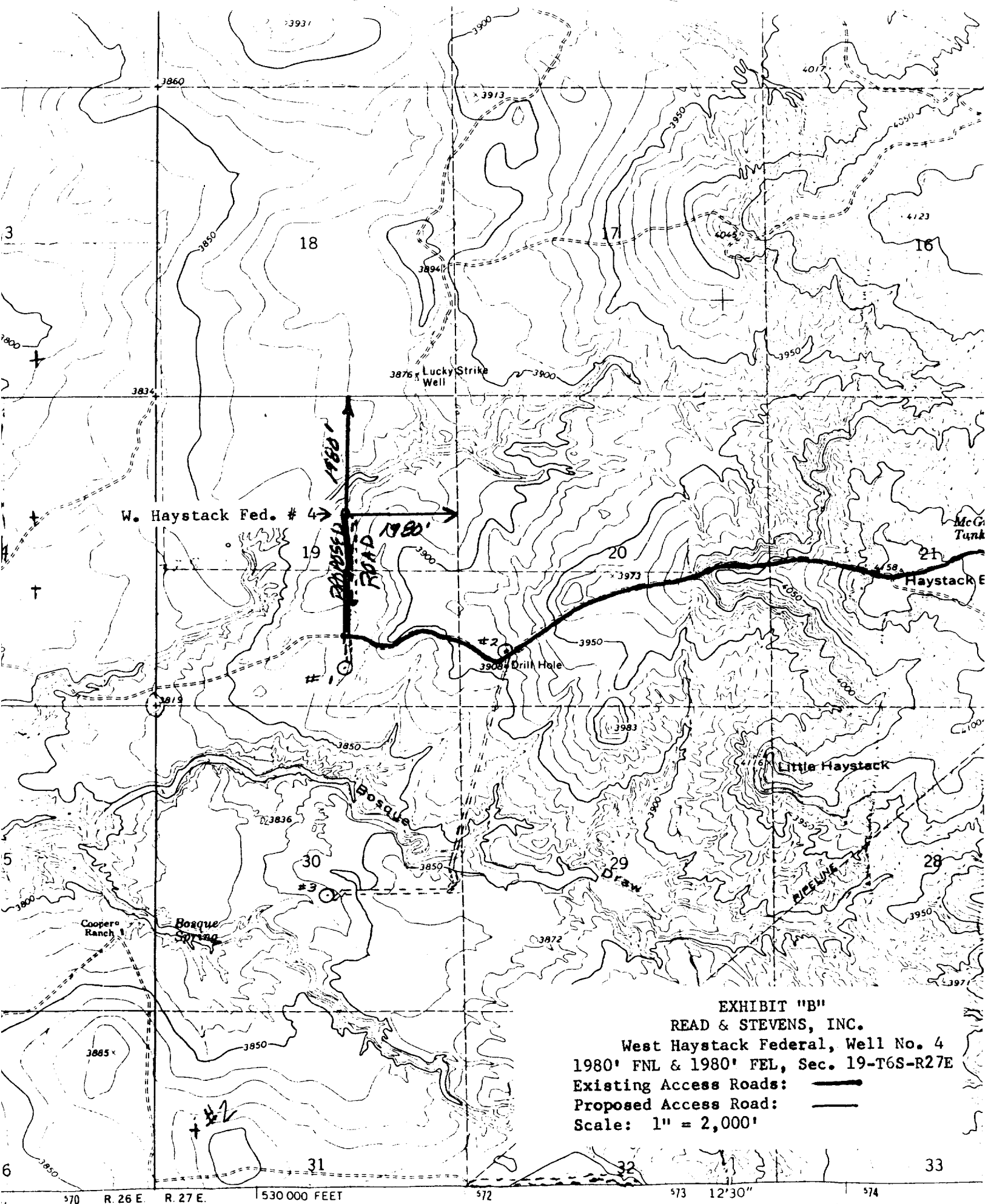




EXHIBIT "B"
 READ & STEVENS, INC.
 West Haystack Federal, Well No. 4
 1980' FNL & 1980' FEL, Sec. 19-T6S-R27E
 Existing Access Roads: 
 Proposed Access Road: 
 Scale: 1" = 2,000'

ARTESIA, OFFICE



MEERA DRILLING COMPANY

SIERRA DRILLING CO.

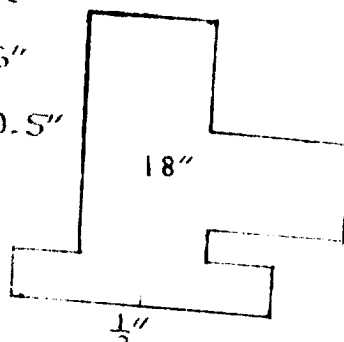
RECEIVED

NOV 1 1982

O. C. D.
ARTESIA, OFFICE

SIERRA DRILLING CO. Rig #5
GL to Floor 132"
GL to Bottom on Rotary 116"

This Stack is 110.5"



Shaffer LWS Db1. Hyd. 5000psi WP - 11"

29.5"

1/2"

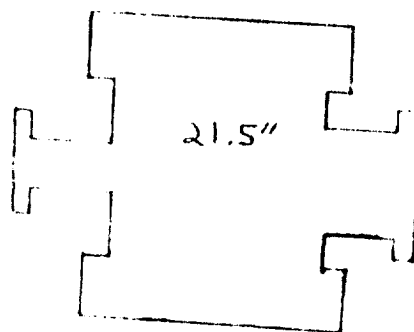


EXHIBIT "E"
READ & STEVENS, INC.
West Haystack Federal, Well No. 4
BOP Specifications