

RECEIVED

Form 9-331 C
(May 1963)

SUBMIT IN TRIPLA E*

NOV 1 1982 42-R1425

UNITED STATES
DEPARTMENT OF THE INTERIOR
GEOLOGICAL SURVEYNM OIL CONS. COMMISSION
Artesia, NM 88210

APPLICATION FOR PERMIT TO DRILL, DEEPEN, OR PLUG BACK

1a. TYPE OF WORK

DRILL ☒DEEPEN ☐PLUG BACK ☐

b. TYPE OF WELL

OIL
WELL ☐GAS
WELL ☒

OTHER

SINGLE
ZONE ☒MULTIPLE
ZONE ☐

2. NAME OF OPERATOR

TRANSWESTERN GAS SUPPLY COMPANY

3. ADDRESS OF OPERATOR

P.O. Box 2521, Houston, TX 77001

4. LOCATION OF WELL (Report location clearly and in accordance with any State requirements.)*

At surface

1980' FSL 660' FWL

Sec. 9-6S-23E

At proposed prod. zone

Same

14. DISTANCE IN MILES AND DIRECTION FROM NEAREST TOWN OR POST OFFICE*

26 Miles north-northwest of Roswell, New Mexico

15. DISTANCE FROM PROPOSED*

LOCATION TO NEAREST
PROPERTY OR LEASE LINE, FT.
(Also to nearest drlg. unit line, if any)

660'

16. NO. OF ACRES IN LEASE

1360

17. NO. OF ACRES ASSIGNED
TO THIS WELL

160

18. DISTANCE FROM PROPOSED LOCATION*

TO NEAREST WELL, DRILLING, COMPLETED,
OR APPLIED FOR, ON THIS LEASE, FT.

2640'

19. PROPOSED DEPTH

3800' Abo

20. ROTARY OR CABLE TOOLS

Rotary

21. ELEVATIONS (Show whether DF, RT, GR, etc.)

4160.09 GL

22. APPROX. DATE WORK WILL START*

November 1, 1982

23.

PROPOSED CASING AND CEMENTING PROGRAM

SIZE OF HOLE	SIZE OF CASING	WEIGHT PER FOOT	SETTING DEPTH	QUANTITY OF CEMENT
17-1/2"	13-3/8"	48.0# K-55	60'	Grout to Surface with Redimix
11"	7-5/8"	26.4# K-55	1500'	450 sx Circulated
6-3/4"	4-1/2"	10.5# J-55	3800'	300 sx Cemented back to 2200'±

Propose to drill to approximately 3800' to test Abo and intermediate formations. Will be drilled with rotary tools using mud as the circulating medium. Complete in favorable zones by perforating and treating the formation.

Double-ram 3000# WP BOP will be installed on the 7-5/8" casing and tested daily during drilling operations.

See attached "Supplemental Drilling Data".

Gas is dedicated to TRANSWESTERN PIPELINE COMPANY

IN ABOVE SPACE DESCRIBE PROPOSED PROGRAM: If proposal is to deepen or plug back, give data on present productive zone and proposed new productive zone. If proposal is to drill or deepen directionally, give pertinent data on subsurface locations and measured and true vertical depths. Give blowout preventer program, if any.

24.

SIGNED

JERRY W. LONG

TITLE Agent

DATE October 25, 1982

(This space for Federal or State Seal)

GEORGE H. STEWART

PERMIT NO.

APPROVAL DATE

APPROVED BY

TITLE

CONDITIONS OF APPROVAL, IF ANY:

RECEIVED
OCT 25 1982OIL & GAS
U.S. GEOLOGICAL SURVEY
ROSWELL, NEW MEXICO

OIL CONSERVATION DIVISION

RECEIVED

STATE OF NEW MEXICO
ENERGY AND MINERALS DEPARTMENTP. O. BOX 2088
SANTA FE, NEW MEXICO 87501NOV 1 1982 Form C-103
Revised 10-1-82

All distances must be from the outer boundaries of the Section.

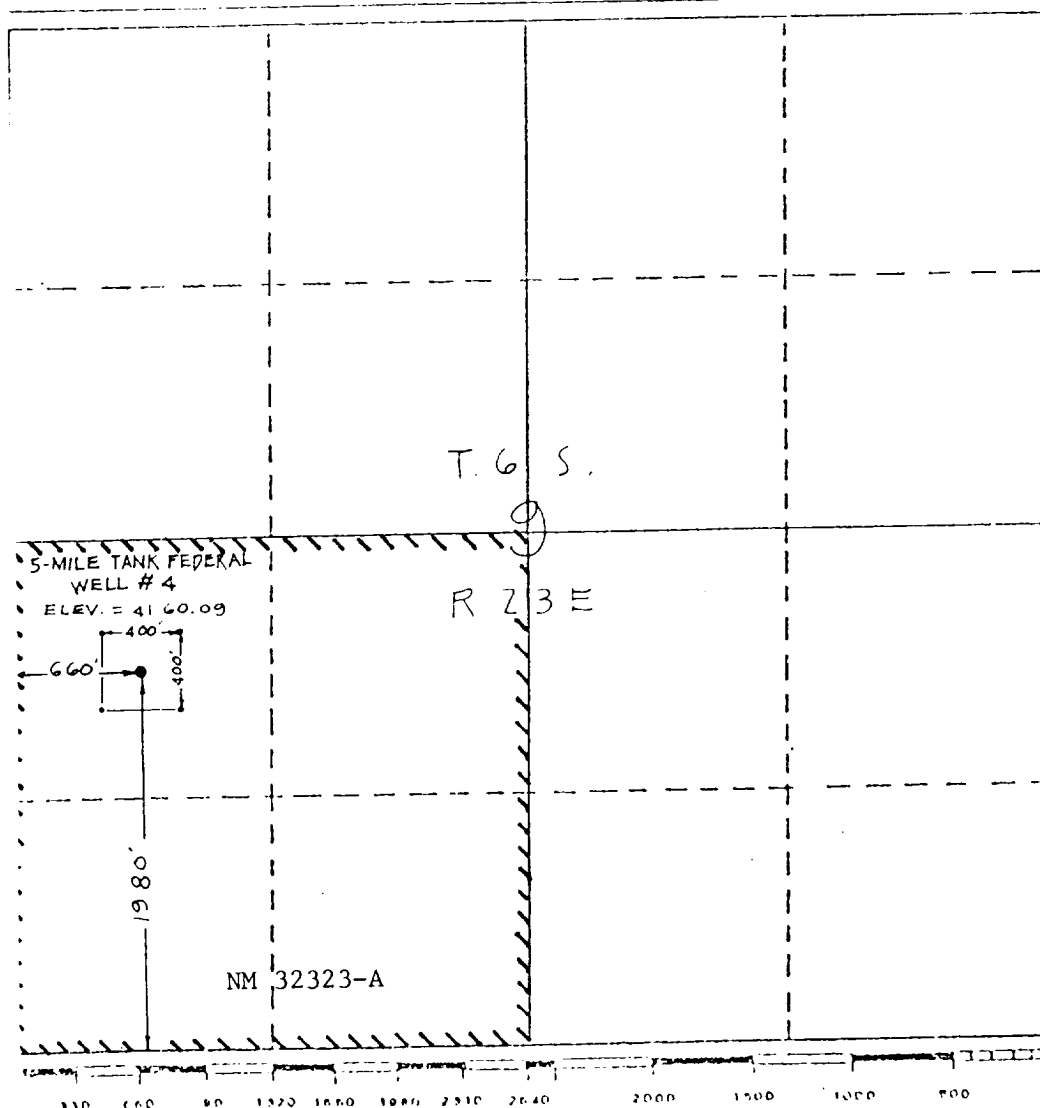
Operator Transwestern Gas Supply Company		Lease Five Mile Tank Federal 5-Mile Tank Federal		Well No. 4
Unit Letter L	Section 9	Township 6 South	Range 23 East	County Chaves
Actual Footage Location of Well:				
660	feet from the west	line and	1980	feet from the south
Ground Level Elev. 4160.09	Producing Formation Abo	Pool Undesignated Abo	Dedicated Acreage: 160	

1. Outline the acreage dedicated to the subject well by colored pencil or hachure marks on the plat below.
2. If more than one lease is dedicated to the well, outline each and identify the ownership thereof (both as to working interest and royalty). Single Lease
3. If more than one lease of different ownership is dedicated to the well, have the interests of all owners been consolidated by communitization, unitization, force-pooling, etc?

☐ Yes ☐ No If answer is "yes," type of consolidation _____

If answer is "no," list the owners and tract descriptions which have actually been consolidated. (Use reverse side of this form if necessary.) _____

No allowable well be assigned to the well until all interests have been consolidated (by communitization, unitization, forced-pooling, or otherwise) or until a non-standard unit, eliminating such interests, has been approved by the Division.



CERTIFICATION

I hereby certify that the information contained herein is true and complete to the best of my knowledge and belief.

Name Jerry W. Long
JERRY W. LONG

Position
Agent

Company
TRANSWESTERN GAS SUPPLY CO.

Date
October 25, 1982

I hereby certify that the well location shown on this plat was plotted from field notes of actual surveys made by me or under my supervision, and that the same is true and correct to the best of my knowledge.

Date Surveyed 10/25/82
Registered Professional Engineer
and/or Land Surveyor

Richard B. Wright

Certificate No.
7929

RECEIVED

NOV 1 1982

O. C. M.
ARTESIA OFFICE

SUPPLEMENTAL DRILLING DATA

TRANSWESTERN GAS SUPPLY COMPANY
No. 4 Fivemile Tank Federal
1980' FSL 660' FWL Sec. 9-6S-23E
Chaves County, N.M.

NM 32323-A

The following items supplement Form 9-331C in accordance with instructions contained in NTL-6.

1. SURFACE FORMATION: Permian San Andres

2. ESTIMATED TOPS OF GEOLOGIC MARKERS:

San Andres	Surface
Glorieta	750'
Tubb	2300'
Abo	3000'

3. ESTIMATED DEPTHS TO WATER, OIL OR GAS FORMATION:

Water	-	Surface to 300'
Gas	-	3000' to 3800'

4. PROPOSED CASING PROGRAM: See Form 9-331C

5. PRESSURE CONTROL EQUIPMENT: Blowout preventer stack will consist of a double-ram blowout preventer rated to 3000# WP. A sketch of the BOP is attached.

6. CIRCULATING MEDIUM: Hole for 13-3/8" conductor pipe will be drilled with a rat hole auger. Mud will be used as the circulating medium for the remainder of the drilling. Appropriate additives will be used in the mud system.

7. AUXILIARY EQUIPMENT: Full-opening kelly cock, to fit the drill string in use, will be kept on the rig floor at all times.

8. TESTING, LOGGING AND CORING PROGRAM:

Samples:	Surface casing shoe to TD
DST's:	None anticipated
Logging:	Gamma Ray-Neutron log and other logs as recommended by well-site geologist.
Coring:	None anticipated

TRANSWESTERN GAS SUPPLY COMPANY
No.4 Fivemile Tank Federal
1980'FSL 660'FWL Sec.9-6S-23E

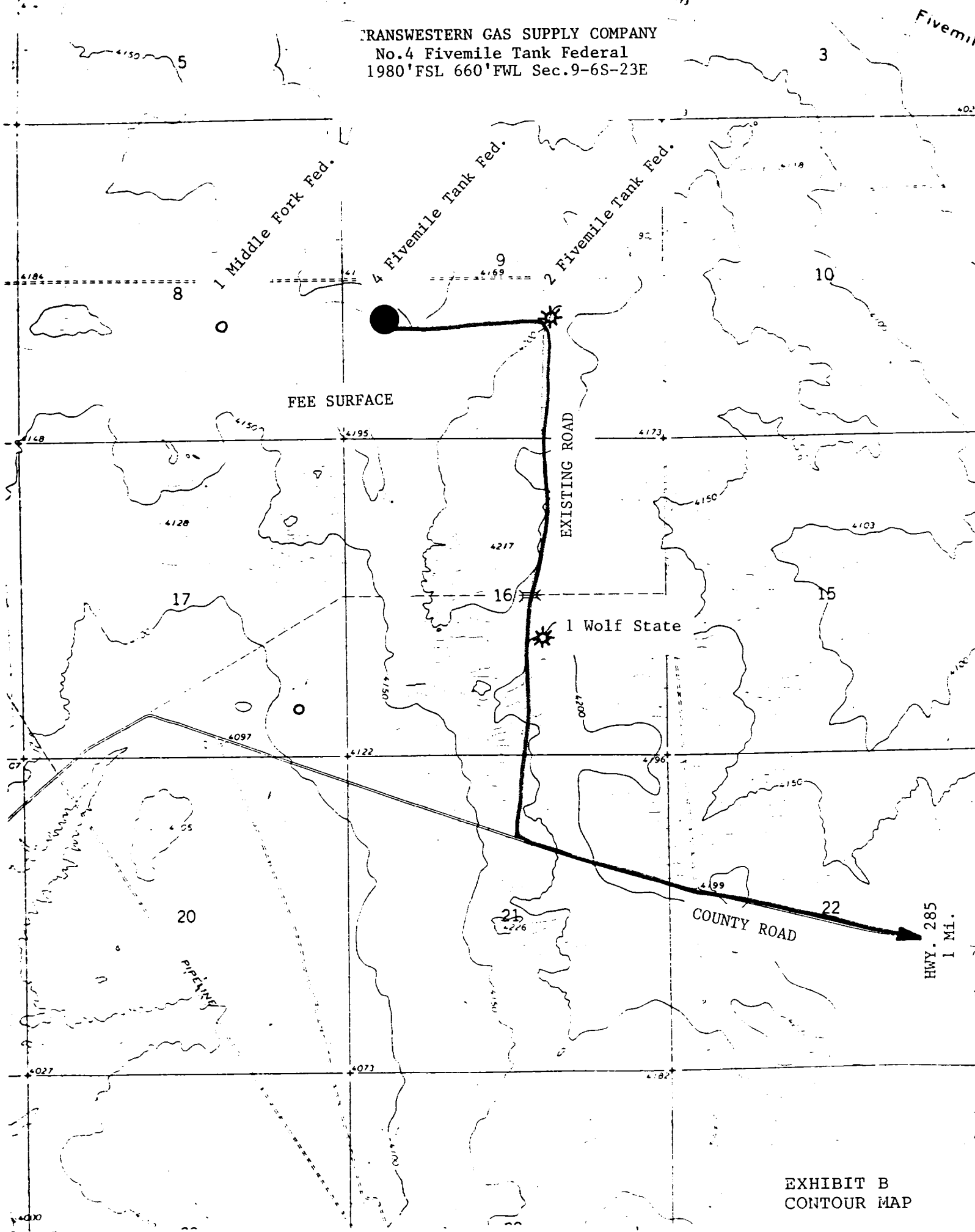
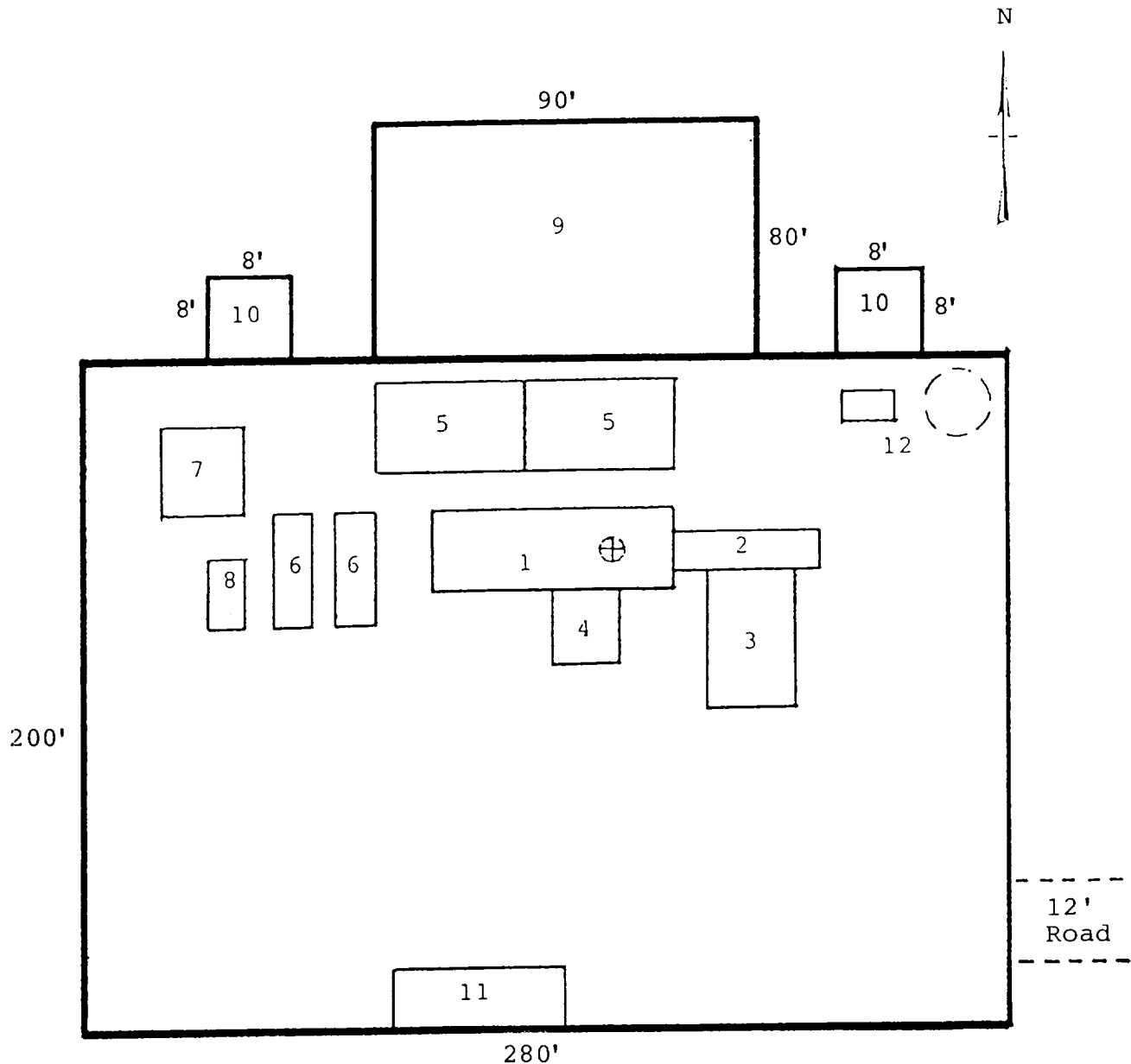


EXHIBIT B
CONTOUR MAP

TRANSWESTERN GAS SUPPLY COMPANY
 No.4 Fivemile Tank Federal
 1980'FSL 660'FWL Sec.9-6S-23E
 Chaves County, N.M.

RECEIVED
 NOV 1 1982
 O. C. D.
 ARTESIA, OFFICE



RIG LAYOUT

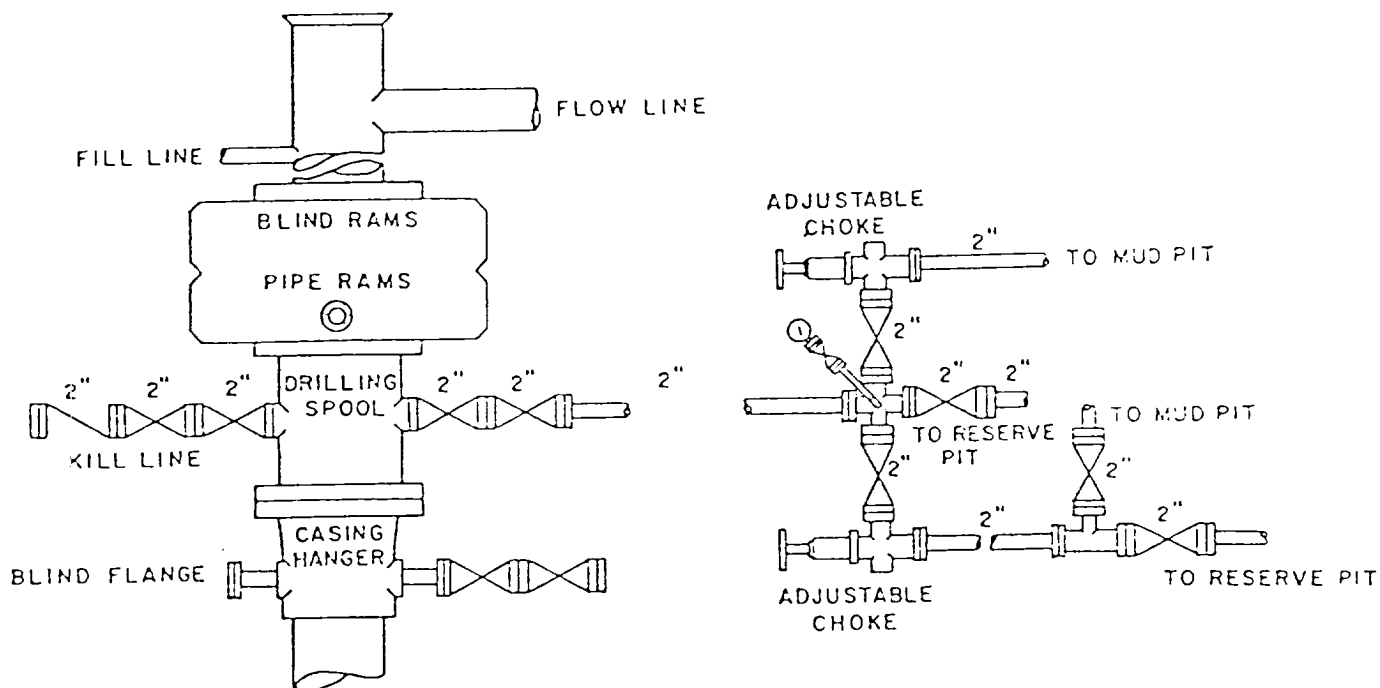
- | | |
|-----------------|---------------------------|
| 1. Substructure | 7. Water Tank |
| 2. Catwalk | 8. Light Plant |
| 3. Pipe Rack | 9. Reserve Pit |
| 4. Doghouse | 10. Trash Pit |
| 5. Mud Pits | 11. Trailer House |
| 6. Mud Pumps | 12. Production Facilities |

RECEIVED

NOV 1 198

O. C. D.
ARTESIA, OFFICE

TRANSWESTERN GAS SUPPLY COMPANY
No.4 Fivemile Tank Federal
1980'FSL 660'FWL Sec.9-6S-23E
Chaves County, N.M.



BOP DIAGRAM

3000# WP Double-Ram
Operated Daily