

UNITED STATES DEPARTMENT OF THE INTERIOR GEOLOGICAL SURVEY

RECEIVED FEB 27 1984 O.C.D. ut.c ARTESIA OFFICE

Form approved. Budget Bureau No. 42-R1425.

30-005-62120

C/87

5. LEASE DESIGNATION AND SERIAL NO.

NM-27061

6. IF INDIAN, ALLOTTEE OR TRIBE NAME

7. UNIT AGREEMENT NAME

8. FARM OR LEASE NAME

Crosby "TV" Federal

9. WELL NO.

2

10. FIELD AND POOL, OR WILDCAT

Undes. Pecos Slope Abo

11. SEC., T., R., M., OR BLK. AND SURVEY OR AREA

Sec. 15-T8S-R25E

12. COUNTY OR PARISH 13. STATE

Chaves

NM

APPLICATION FOR PERMIT TO DRILL, DEEPEN, OR PLUG BACK

1a. TYPE OF WORK

DRILL [X]

DEEPEN [ ]

ON & GAS PLUG BACK [ ]

b. TYPE OF WELL

OIL WELL [ ]

GAS WELL [X]

OTHER [ ]

SINGLE ZONE [ ]

ROSWELL, NEW MEXICO

2. NAME OF OPERATOR

Yates Petroleum Corporation

3. ADDRESS OF OPERATOR

207 S. 4th, Artesia, New Mexico 88210

4. LOCATION OF WELL (Report location clearly and in accordance with any State requirements.)

At surface 660' FNL and 1980' FWL

At proposed prod. zone same

14. DISTANCE IN MILES AND DIRECTION FROM NEAREST TOWN OR POST OFFICE: Approximately 22 miles NNE of Roswell, NM.

15. DISTANCE FROM PROPOSED LOCATION TO NEAREST PROPERTY OR LEASE LINE, FT. (Also to nearest drlg. unit line, if any) 660'

16. NO. OF ACRES IN LEASE 320

17. NO. OF ACRES ASSIGNED TO THIS WELL 160

18. DISTANCE FROM PROPOSED LOCATION TO NEAREST WELL, DRILLING, COMPLETED, OR APPLIED FOR, ON THIS LEASE, FT.

19. PROPOSED DEPTH appr. 4150'

20. ROTARY OR CABLE TOOLS Rotary

21. ELEVATIONS (Show whether DF, RT, GR, etc.)

3628.3 GL

22. APPROX. DATE WORK WILL START\*

ASAP

23. PROPOSED CASING AND CEMENTING PROGRAM

Table with 5 columns: SIZE OF HOLE, SIZE OF CASING, WEIGHT PER FOOT, SETTING DEPTH, QUANTITY OF CEMENT. Rows show 14 3/4" hole with 10 3/4" casing (40.5# J-55) and 7 7/8" hole with 4 1/2" casing (9.5#).

We propose to drill and test the Abo and intermediate formations. Approximately 850' of surface casing will be set and cement circulated to shut off gravel and caving. If needed (lost circulation) 8 5/8" intermediate casing will be run to 1500' and cemented with enough cement calculated to tie back into the surface casing. If commercial, production casing will be run and cemented with adequate cover, perforated and stimulated as needed for production.

MUD PROGRAM: FW gel/LCM to 850', Brine to 3200', Brine/KCL water to TD.

BOP PROGRAM: BOP's will be installed at the offset and tested daily.

GAS NOT DEDICATED.

Post. add AD-127/Book 3-2-84

IN ABOVE SPACE DESCRIBE PROPOSED PROGRAM: If proposal is to deepen or plug back, give data on present productive zone and proposed new productive zone. If proposal is to drill or deepen directionally, give pertinent data on subsurface locations and measured and true vertical depths. Give blowout preventer program, if any.

24. SIGNED [Signature] TITLE Regulatory Agent DATE 2/10/84

PERMIT NO. APPROVAL DATE APPROVED BY [Signature] TITLE [Signature] DATE [Signature]

APPROVAL SUBJECT TO GENERAL REQUIREMENTS AND SPECIAL STIPULATIONS ATTACHED

1. The first part of the document is a list of the names of the members of the committee who have been appointed to investigate the matter.

2. The second part of the document is a list of the names of the members of the committee who have been appointed to investigate the matter.

All distances must be from the outer boundaries of the Section.

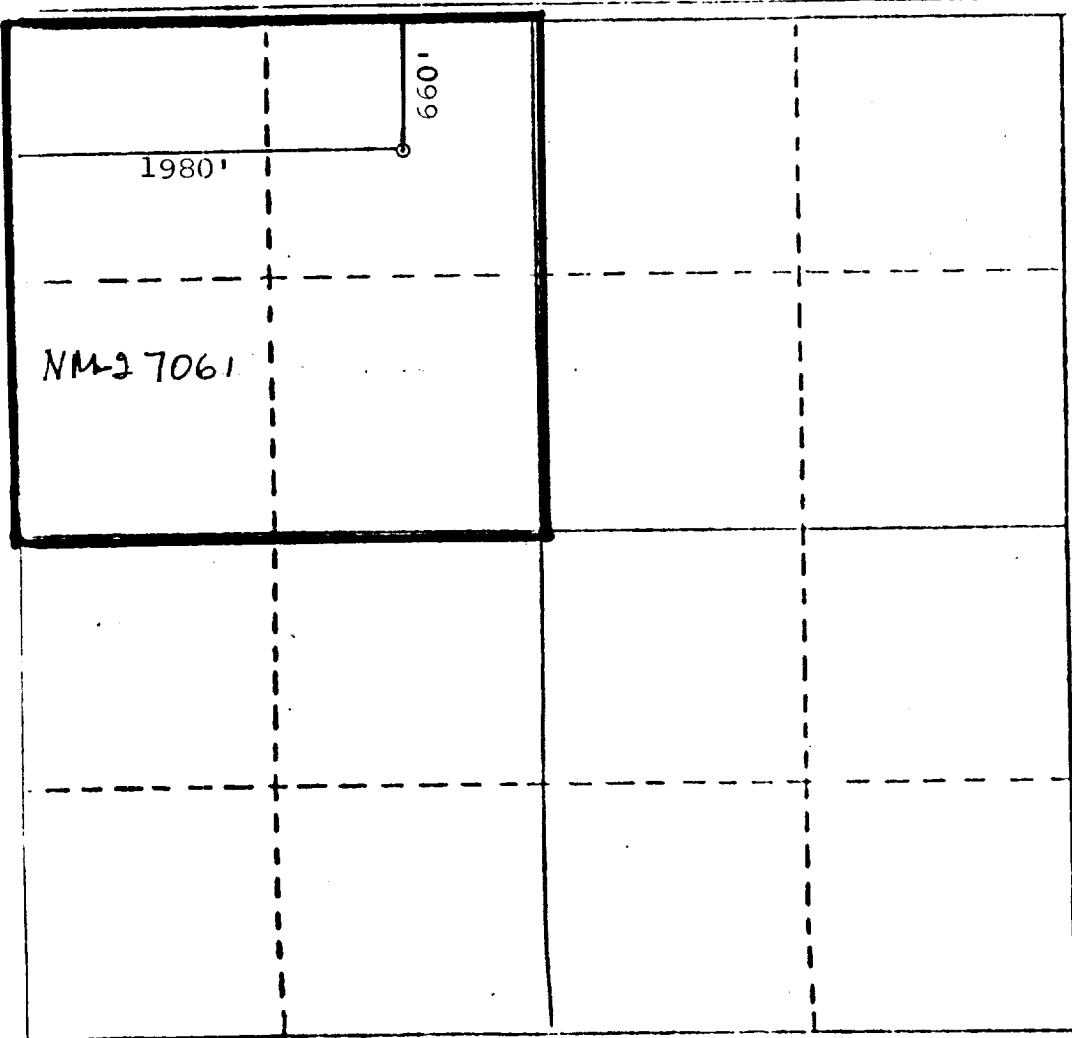
Yates Petroleum Corporation			Lease Crosby TV <i>Fed</i>		Well No. <del>ED</del> #2
Section Letter C	Section 15	Township 8 South	Range 25 East	County Chaves	
Actual Footage Location of Well: 660 feet from the North line and 1980 feet from the West line					
Ground Level Elev. 3626.3	Producing Formation Abo	Pool Undes. Pecos Slope Abo		Dedicated Acreage: 160	

1. Outline the acreage dedicated to the subject well by colored pencil or hachure marks on the plat below.
2. If more than one lease is dedicated to the well, outline each and identify the ownership thereof (both as to your interest and royalty).
3. If more than one lease of different ownership is dedicated to the well, have the interests of all owners been consolidated by communitization, unitization, force-pooling, etc?

Yes  No If answer is "yes," type of consolidation \_\_\_\_\_

If answer is "no," list the owners and tract descriptions which have actually been consolidated. (Use reverse side of this form if necessary.) \_\_\_\_\_

No allowable will be assigned to the well until all interests have been consolidated (by communitization, unitization, forced-pooling, or otherwise) or until a non-standard unit, eliminating such interests, has been approved by the Division.



CERTIFICATION

I hereby certify that the information furnished herein is true and correct to the best of my knowledge and belief.

*Gliserio Rodriguez*  
Name  
Gliserio Rodriguez

Position  
Regulatory Agent

Company  
Yates Petroleum Corp.

Date  
2/10/84



Photo Surveyed  
*Jackie D. Atiles*  
Registered Professional Engineer  
in Vol. Land Surveyor

PE 5403 LS 8504  
Certificate No.

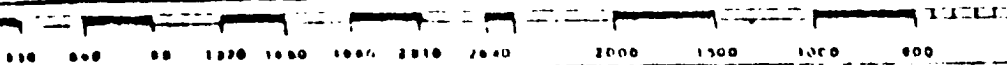
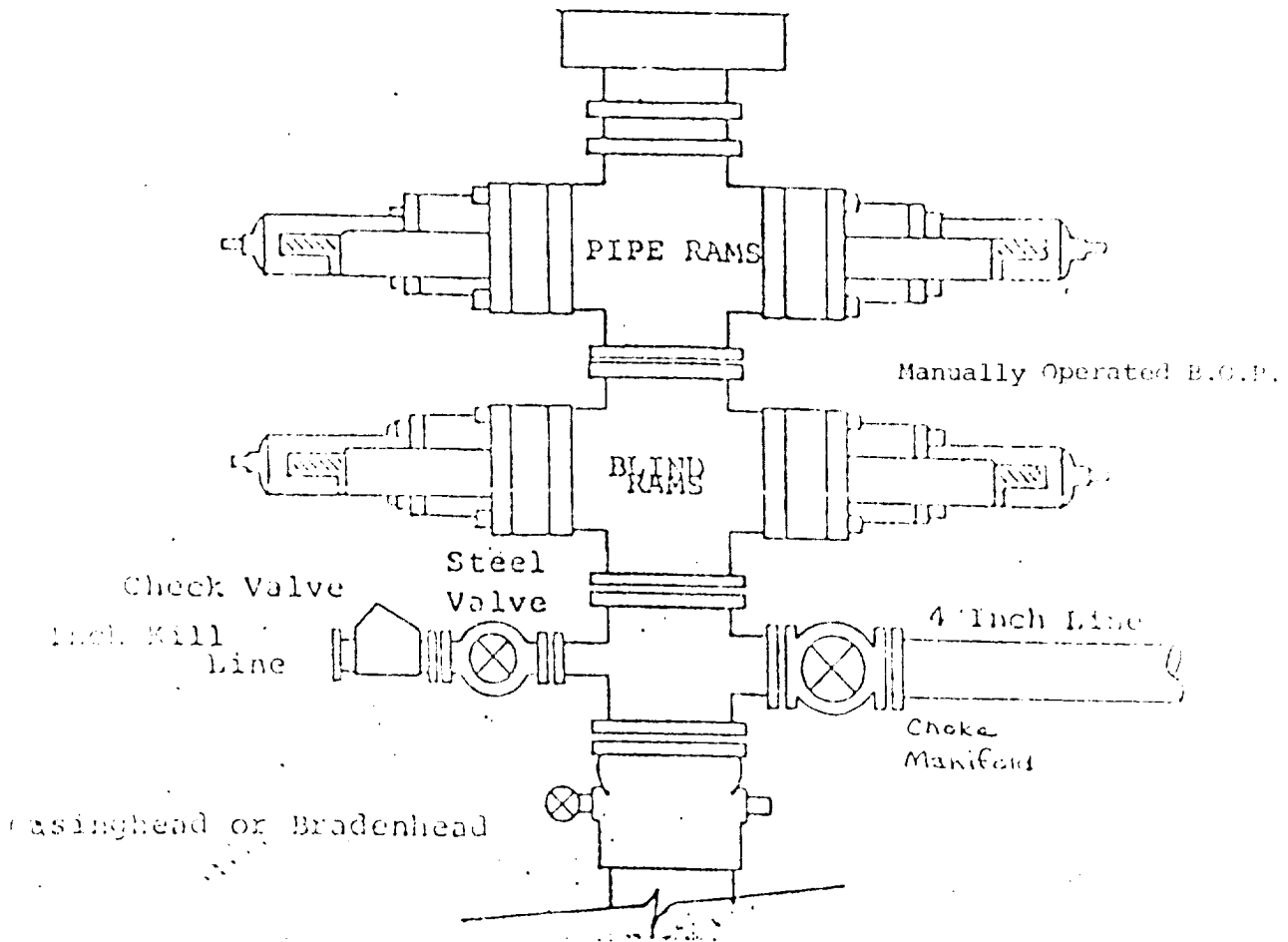


EXHIBIT B

BOP DIAGRAM

RATED 3000<sup>#</sup>



YATES PETROLEUM CORPORATION  
Crosby "TV" Federal #2  
660' FNL and 1980' FWL  
Section 15-T8S-R25E

In conjunction with Form 9-331C, Application for Permit to Drill subject well, Yates Petroleum Corporation submits the following ten items of pertinent information in accordance with BLM requirements.

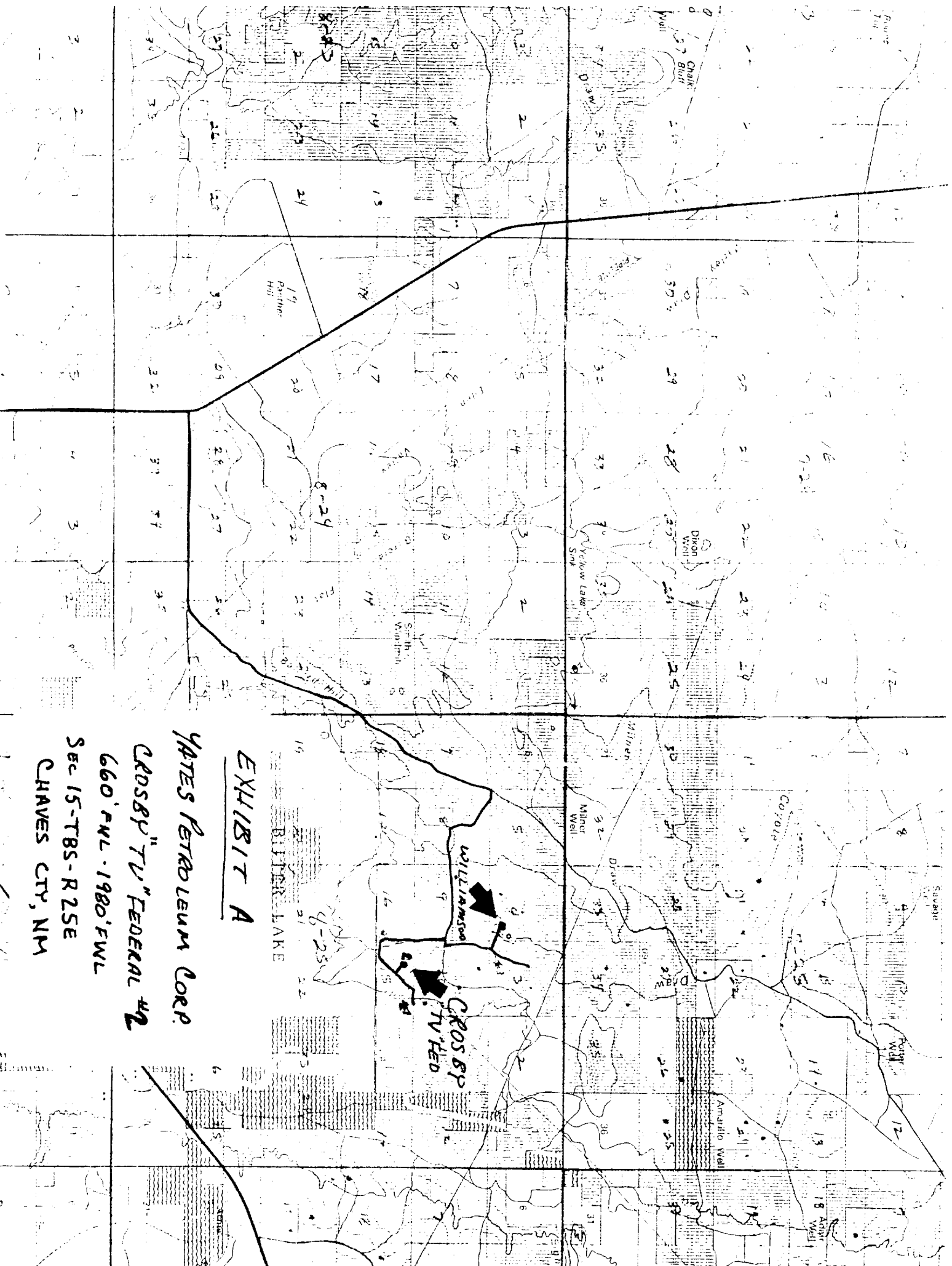
1. The geologic surface formation is quaternary alluvium.
2. The estimated tops of geologic markers are as follows:

San Andres	360'
Glorieta	1475'
Fullerton	2900'
Abo	3610'
TD	4150'
3. The estimated depths at which anticipated water, oil or gas formations are expected to be encountered:

Water: Approximately 200'

Oil or Gas: Abo 3675'
4. Proposed Casing Program: See Form 9-331C.
5. Pressure Control Equipment: See Form 9-331C.
6. Mud Program: See Form 9-331C.
7. Auxiliary Equipment: Kelly Cock; pit level indicators and flow sensor equipment; sub with full-opening valve on floor, drill pipe connection.
8. Testing, Logging and Coring Program:

Samples: Surface casing to TD.  
DST's: As warranted.  
Coring: None.  
Logging: CNL-FDC TD to csg w/GR-CNL onto surface & DLL from TD to csg.
9. No abnormal pressures or temperatures are anticipated.
10. Anticipated starting date: As soon as possible after approval.



**EXHIBIT A**

**YATES PETROLEUM CORP.**

**CROSBY "TV" FEDERAL #2**

**660' FWL - 1980' FWL**

**SEC 15-T8S-R2SE**

**CHAVES CITY, NM**

# YATES PETROLEUM CORP.

## Exhibit C

Reserve Pit  
Bottom to be at  
ground level to  
1 ft.

