

RECEIVED

SURFACE USE AND OPERATION PLAN

MCKAY OIL CORPORATION
Westfork Federal #11
SW/4 NW/4, Sec. 6, T5S, R22E
Chaves County, New Mexico
NM-32312

JAN 23 '90

RECEIVED
ARTESIA, OFFICE

This plan is submitted with the application for permit to drill the above described well. The purpose of the plan is to describe the location of the proposed well, the proposed construction activities and operations plan, the magnitude of necessary surface disturbance involved, and the procedures to be followed in rehabilitating the surface after completion of the operation so that a complete appraisal can be made of the environmental effects associated with the operation.

1. EXISTING ROADS:

- A. Exhibit 'A' is a portion of a road map showing the location of the proposed well as staked. The well is approximately 31 miles Northeast of Roswell, New Mexico.
- B. Directions: Heading north out of Roswell, New Mexico on U.S. 285 for approximately 30 Miles. The turn is 1/2 mile before highway 20 north. Turn left on dirt road (entrance has heavy metal swinging gate). Go approximately 4 miles west, then turn 45 degrees southwest for 5/8 mile to gate. Continue south for 3/8 mile, turn west for 1/2 mile, pass Westfork #12 and continue west for 5/8 mile. Stop.

2. PLANNED ACCESS ROADS:

- A. Length and Width: The new access road will be 14' wide by approximately 5/8 mile in length.
- B. Surfacing Materials: Sand and gravel or caliche will be placed where necessary.
- C. Turnouts: One every 1/4 mile.
- D. Maximum Grade: Less than 3%.
- E. Drainage Design: None necessary.

McKay Oil Corporation
West Fork Federal #11
SW $\frac{1}{4}$ of Sec. 6-5S-22E
Chaves County, New Mexico

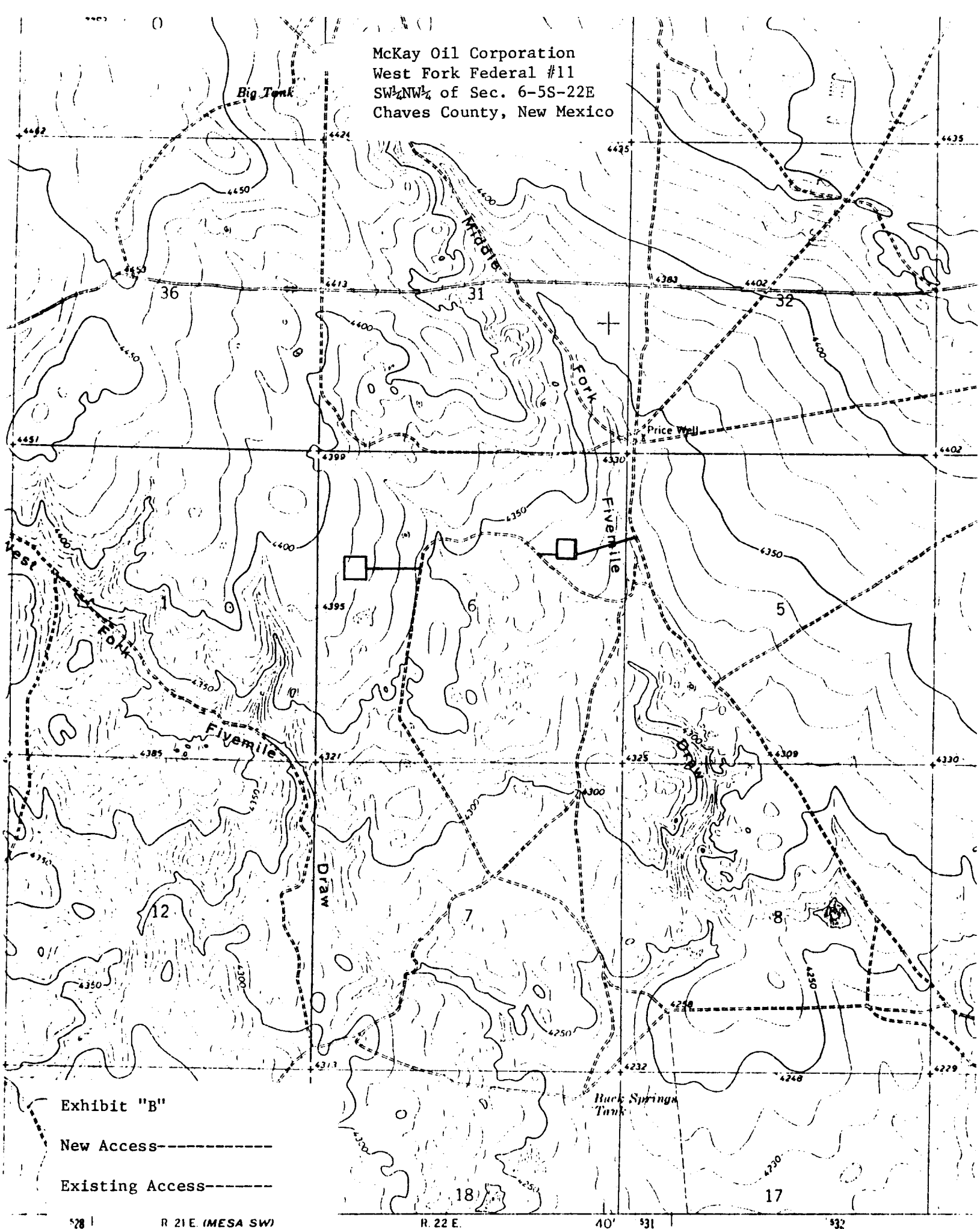


Exhibit "B"

New Access-----

Existing Access-----

528

R. 21 E. (MESA SW)
5051 / SW

R. 22 E.

40'

531

532

SCALE 1:24,000

SURFACE USE AND OPERATION PLAN

MCKAY OIL CORPORATION
Westfork Federal #11
SW/4 NW/4, Sec. 6, T5S, R22E
Chaves County, New Mexico
NM-32312

This plan is submitted with the application for permit to drill the above described well. The purpose of the plan is to describe the location of the proposed well, the proposed construction activities and operations plan, the magnitude of necessary surface disturbance involved, and the procedures to be followed in rehabilitating the surface after completion of the operation so that a complete appraisal can be made of the environmental effects associated with the operation.

1. EXISTING ROADS:

- A. Exhibit 'A' is a portion of a road map showing the location of the proposed well as staked. The well is approximately 31 miles Northeast of Roswell, New Mexico.
- B. Directions: Heading north out of Roswell, New Mexico on U.S. 285 for approximately 30 Miles. The turn is 1/2 mile before highway 20 north. Turn left on dirt road (entrance has heavy metal swinging gate). Go approximately 4 miles west, then turn 45 degrees southwest for 5/8 mile to gate. Continue south for 3/8 mile, turn west for 1/2 mile, pass Westfork #12 and continue west for 5/8 mile. Stop.

2. PLANNED ACCESS ROADS:

- A. Length and Width: The new access road will be 14' wide by approximately 5/8 mile in length.
- B. Surfacing Materials: Sand and gravel or caliche will be placed where necessary.
- C. Turnouts: One every 1/4 mile.
- D. Maximum Grade: Less than 3%.
- E. Drainage Design: None necessary.

McKay Oil Corporation
West Fork Federal #11
SW $\frac{1}{4}$ NW $\frac{1}{4}$ of Sec. 6-5S-22E
Chaves County, New Mexico

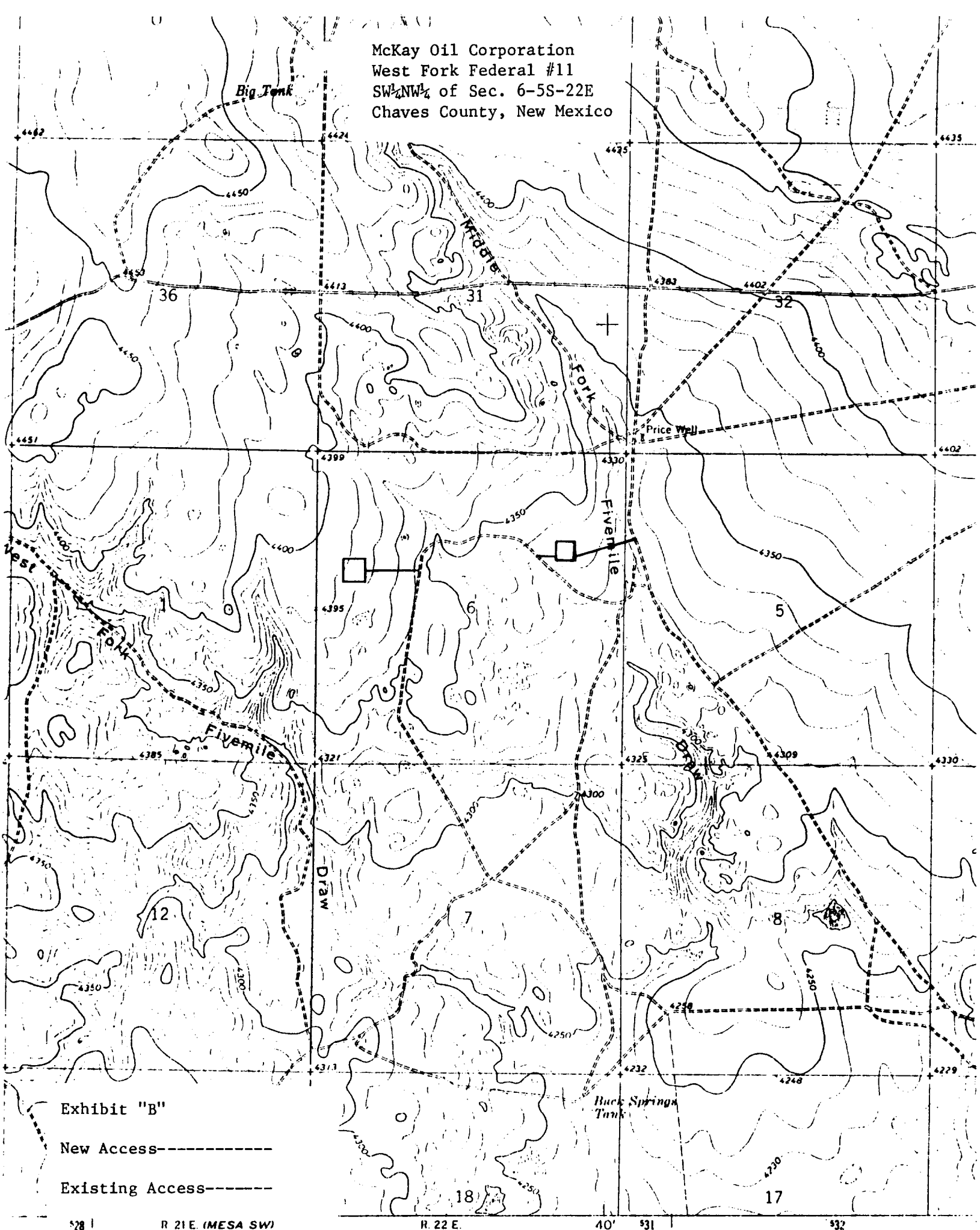


Exhibit "B"

New Access-----

Existing Access-----

28

R 21 E. (MESA SW)
5051 / SW

R. 22 E.

40'

531

532

SCALE 1:24,000