

UNITED STATES
DEPARTMENT OF THE INTERIOR
GEOLOGICAL SURVEY

30-015-21223

APPLICATION FOR PERMIT TO DRILL, DEEPEN, OR PLUG BACK

1a. TYPE OF WORK

DRILL ☒DEEPEN ☐PLUG BACK ☐

b. TYPE OF WELL

OIL
WELL ☒GAS
WELL ☐

OTHER

SINGLE
ZONE ☐MULTIPLE
ZONE ☐

2. NAME OF OPERATOR

Exxon Corporation

3. ADDRESS OF OPERATOR

Box 1600, Midland, Texas 79701

4. LOCATION OF WELL (Report location clearly and in accordance with any State requirements.)

At surface

660' FSL & 660' FEL

At proposed prod. zone

Same

14. DISTANCE IN MILES AND DIRECTION FROM NEAREST TOWN OR POST OFFICE*

7 miles East of Loving, New Mexico

10. DISTANCE FROM PROPOSED*

LOCATION TO NEAREST
PROPERTY OR LEASE LINE, FT.

660'

(Also to nearest drilg. unit line, if any)

660'

13. DISTANCE FROM PROPOSED LOCATION*
TO NEAREST WELL, DRILLING, COMPLETED,
OR APPLIED FOR, ON THIS LEASE, FT.

None

16. NO. OF ACRES IN LEASE

2,440'

19. PROPOSED DEPTH

3,100'

11. NO. OF ACRES ASSIGNED
TO THIS WELL

40

20. ROTARY OR CABLE TOOLS

Rotary

21. ELEVATIONS (Show whether DF, RT, GR, etc.)

Later

22. APPROX. DATE WORK WILL START*

July 8, 1974

23.

PROPOSED CASING AND CEMENTING PROGRAM

SIZE OF HOLE	SIZE OF CASING	WEIGHT PER FOOT	SETTING DEPTH	QUANTITY OF CEMENT
(1) 11" or 12-1/4"	7-5/8" or 8-5/8"	26.4# or 24#	500'	* 200 to 250 sacks
6-3/4" or 7-7/8"	4-1/2"	9.5#	3,100'	* 100-150 sacks

(1) Grade K-55, Used

(2) Grade K-55, Used

* Cement back to surface.

** Cement back to approximately 2,000'.

HOWCO method of cementing to be used.

MUD PROGRAM:

0' - 500' Spud Mud
500' - 3,100' Brine Water

The maximum expected formation pressure is 1,000 psi at 3,100'. See "Development Plan for Surface Use", "Blowout Preventer Equipment" and "Rig Layout" attached to our Original Application dated 4-8-74.

IN ABOVE SPACE DESCRIBE PROPOSED PROGRAM: If proposal is to deepen or plug back, give data on present productive zone and proposed new productive zone. If proposal is to drill or deepen directionally, give pertinent data on subsurface locations and measured and true vertical depths. Give blowout preventer program, if any.

24.

SIGNED

A. L. Clemmer
D. L. Clemmer

TITLE

Proration Specialist

DATE

4-19-74

(This space for Federal or State office use)

PERMIT NO.

APPROVAL DATE

APPROVED

CONDITIONS OF APPROVAL, IF ANY:

MAY 22 1974

H. L. BEEKMAN

ACTING DISTRICT ENGINEER

TITLE

DATE

THIS APPROVAL IS RESCINDED IF OPERATIONS
ARE NOT COMMENCED WITHIN 3 MONTHS.
See Instructions On Reverse Side
AUG 22 1974

RECEIVED
APR 24 1974
U. S. GEOLOGICAL SURVEY
ARTESIA, NEW MEXICO

Exxon Lse. No. 606933

NEW MEXICO OIL CONSERVATION COMMISSION

Form C-102
Supersedes C-128
Effective 1-1-65

State Lse. No. _____

WELL LOCATION AND ACREAGE DEDICATION PLAT

Federal Lse. No. NM 0554223

All distances must be from the outer boundaries of the Section.

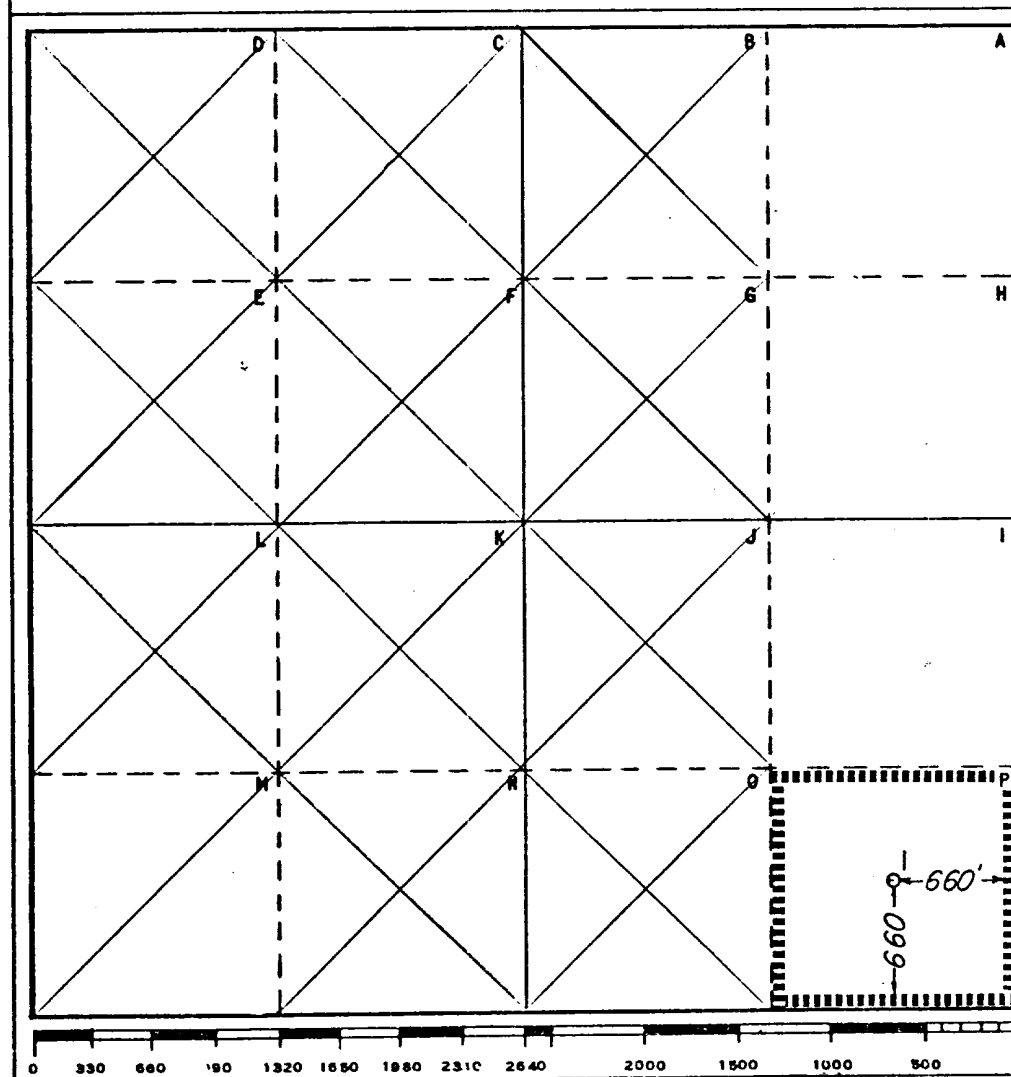
Operator Exxon Corporation			Lease LINK - FEDERAL		Well No. 1
Unit Letter "P"	Section 28	Township 23-S	Range 29-E	County EDDY	
Actual Footage Location of Well: 660 feet from the SOUTH line and 660 feet from the EAST line					
Ground Level Elev.:	Producing Formation DELAWARE SAND		Pool WILDCAT		Dedicated Acreage: 40 Acres

1. Outline the acreage dedicated to the subject well by colored pencil or hachure marks on the plat below.
2. If more than one lease is dedicated to the well, outline each and identify the ownership thereof (both as to working interest and royalty).
3. If more than one lease of different ownership is dedicated to the well, have the interests of all owners been consolidated by communitization, unitization, force-pooling, etc?

☐ Yes ☐ No If answer is "yes," type of consolidation _____

If answer is "no," list the owners and tract descriptions which have actually been consolidated. (Use reverse side of this form if necessary.) _____

No allowable will be assigned to the well until all interests have been consolidated (by communitization, unitization, forced-pooling, or otherwise) or until a non-standard unit, eliminating such interests, has been approved by the Commission.



CERTIFICATION

I hereby certify that the information contained herein is true and complete to the best of my knowledge and belief.

Name A. L. Clemmer

Position Proration Specialist

Company Exxon Corporation
Box 1600 Midland, Texas

Date 4-8-74

I hereby certify that the well location shown on this plat was plotted from field notes of actual surveys made by me or under my supervision, and that the same is true and correct to the best of my knowledge and belief.

RECEIVED
APR 9 1974
U.S. GEOLOGICAL SURVEY
ARTESIA, NEW MEXICO

Date Surveyed 4-6-74

Registered Professional Engineer and/or Land Surveyor

A. L. Hesterfeldt

Certificate No. 1362

DEVELOPMENT PLAN FOR SURFACE USE ON LINK-FEDERAL
WELL NO. 1

Attached is a segment of a map in Eddy County, New Mexico showing the location of the proposed Wildcat well. Also attached are the following listed items as requested by the U.S.G.S.

1. Existing roads. (See area map.)
2. Planned access to the location. (See area map)
3. Offsetting Pool wells. (None)
4. Lateral roads to other wells. (None)
5. Location of tank battery and flow line will be furnished at a later date.
6. Water will be hauled in from an off lease source.
7. The drilling contractor will be required to comply with OSHA requirements. Trash and junk to be buried in a separate trash pit or hauled to an operating sanitary land fill.
8. No camps are involved.
9. No airstrips are involved.
10. A sketch of a typical location layout is attached showing the position of the rig, pipe rack and reserve pit, as well as the size of the location.
11. The location will be restored to the satisfaction of the Bureau of Land Management.
12. The drilling site area consists of washed and rolling terrain with sparse vegetation and the drilling of this well will not adversely affect the environment.
13. Blowout Prevention Equipment will be 2000 psi working pressure, tested according to industry standards. (See Equip. Disc. Attached.)

DLC:mej
4-8-74

RECEIVED
APR 8 1974
U. S. GEOLOGICAL SURVEY
ARTESIA, NEW MEXICO

BLOWOUT PREVENTER SPECIFICATION
EQUIPMENT DESCRIPTION

TYPE I

BOP stack "A", "B" or "C" acceptable. All equipment should be at least API 2000 psi W.P. or higher unless otherwise specified.

BOP STACK "A"

1. Bell Nipple with flow line and fill connection.
2. Hydril or Shaffer bag type preventer.
3. Flanged spool with one 4-inch and one 2-inch (minimum) outlet.
4. 2-inch (minimum) flanged plug or gate valve.
5. 4-inch flanged pressure operated gate valve or manual operated plug or gate valve.
6. Ram type pressure operated blowout preventer with blind rams.
7. Screw type casing head (furnished by Exxon) with flange adapter (furnished by contractor).
8. Plug or gate valve (furnished by Exxon).

BOP STACK "B"

1. Bell nipple with flow line and fill connection.
2. Ram type pressure operated blowout preventer with blind rams.
3. Flanged spool with one 4-inch and one 2-inch (minimum) outlet.
4. 2-inch (minimum) flanged plug or gate valve.
5. 4-inch flanged pressure operated gate valve or manual operated plug or gate valve.
6. Ram type pressure operated blowout preventer with pipe rams.
7. Screw type casing head (furnished by Exxon) with flange adapter (furnished by contractor).
8. Plug or gate valve (furnished by Exxon).

BOP STACK "C"

1. Bell nipple with flow line and fill connection.
2. Double pressure operated ram type preventer with blind rams in the top and pipe rams in the bottom with one 4-inch and one 2-inch (minimum) side outlets.
3. 2-inch (minimum) flanged plug or gate valve.
4. 4-inch flanged pressure operated gate valve or manual operated plug or gate valve.
5. Screw type casing head (furnished by Exxon) with flange adapter (furnished by contractor).
6. Plug or gate valve (furnished by Exxon).

CHOKE MANIFOLD

1. 4-inch flanged spacer spool.
2. 4-inch X 2-inch X 2-inch X 2-inch flanged cross.
3. 2-inch flanged plug or gate valve.
4. 2-inch flanged adjustable choke.
5. 2-inch threaded flange.
6. 2-inch X H nipple.
7. 2-inch forged steel Ell.
8. Cameron (or equal,) threaded pressure gage.
9. Blind flange.
10. 2-1/2-inch pipe, 300' to pit, anchored.

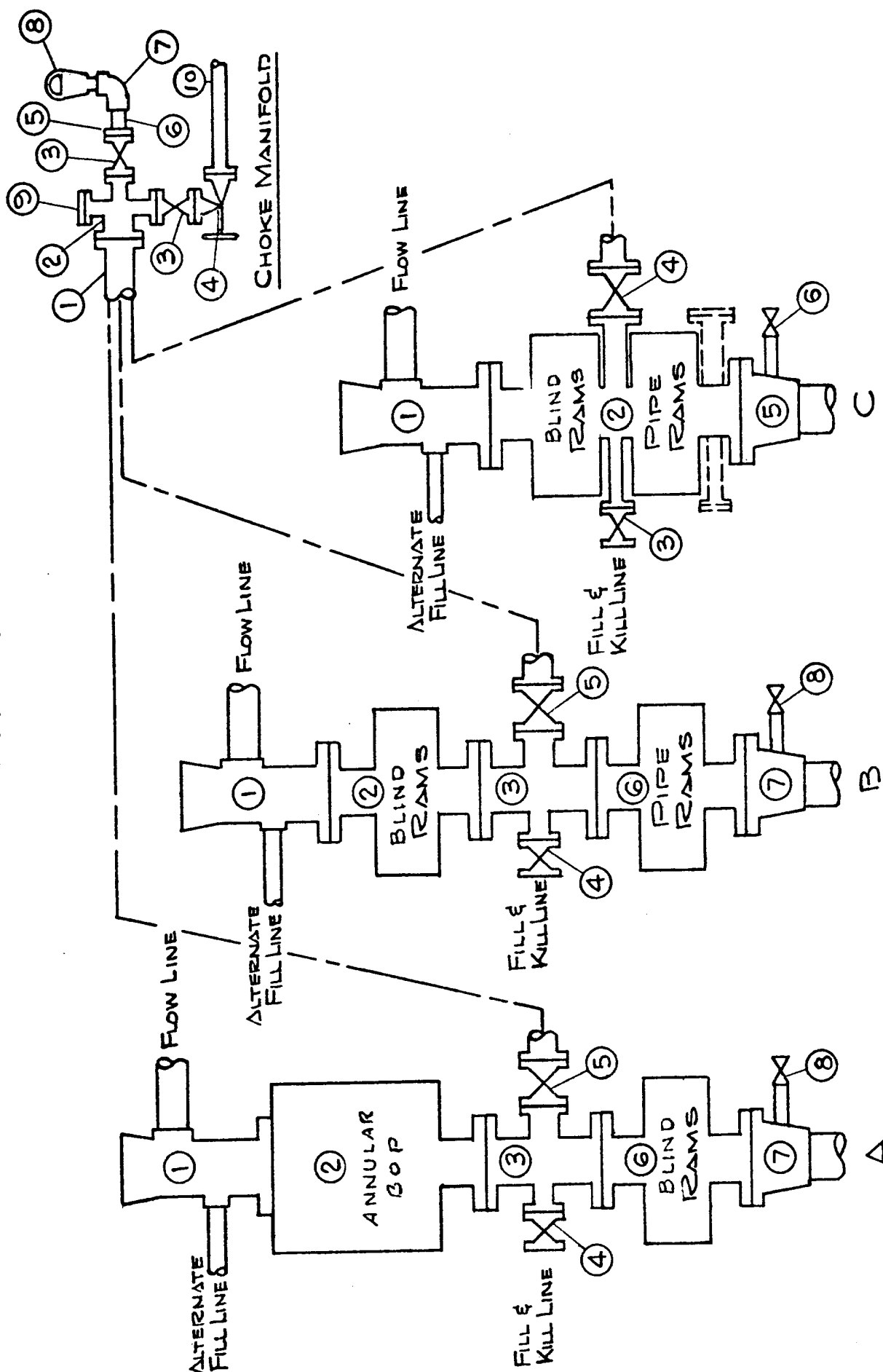
NOTES:

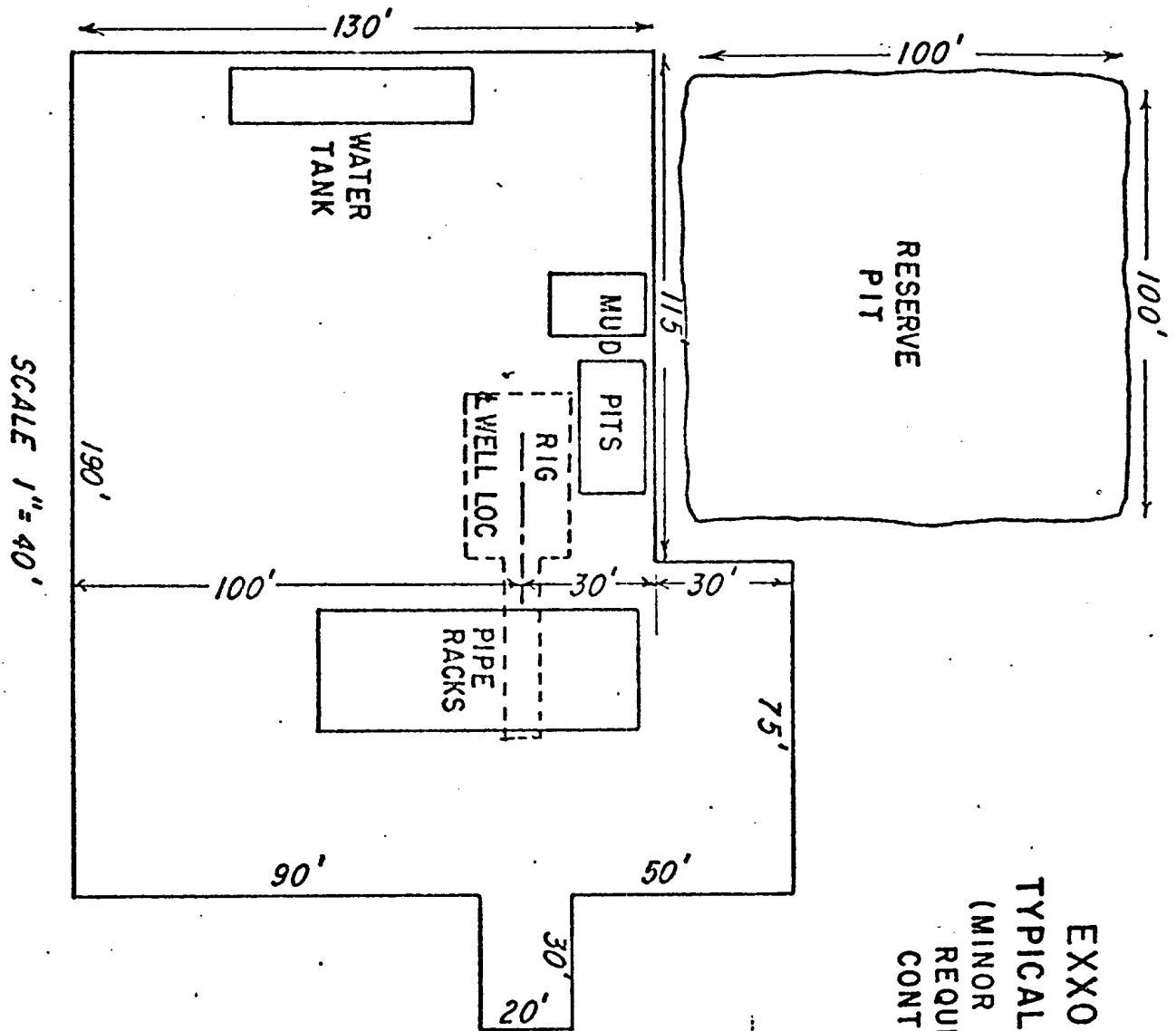
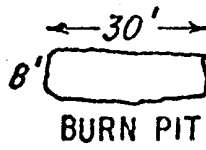
1. Replacement pipe rams and blind rams shall be on location at all times.
2. Only type U, QRC, E and LWS ram type preventers acceptable.

MIDLAND DRILLING ORGANIZATION

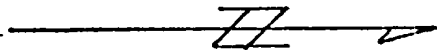
BLOWOUT PREVENTER SPECIFICATION

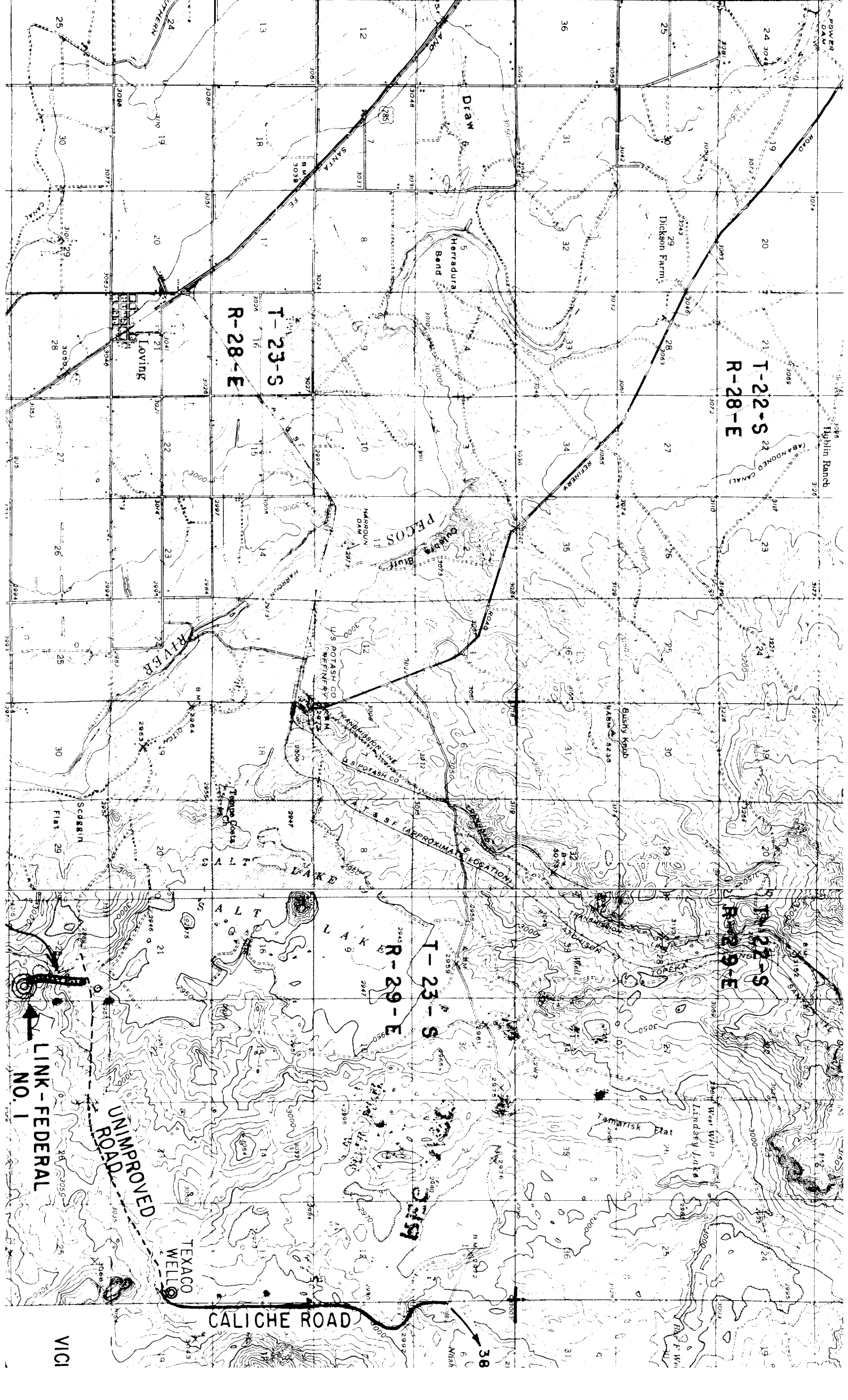
TYPE I





EXXON CORPORATION
 TYPICAL LOCATION LAYOUT
 (MINOR ADJUSTMENTS MAY BE
 REQUIRED BY TERRAIN OR
 CONTRACTORS RIG SIZE)





T-22-S
R-28-E

T-22-S
R-29-E

T-23-S

R-29-E

T-23-S
R-28-E

LOVING

UNIMPROVED
ROAD

LINK-FEDERAL
NO. 1

CALICHE ROAD

VICI

38