

NO. OF COPIES RECEIVED	5
DISTRIBUTION	
SANTA FE	/
FILE	/
U.S.G.S.	2
LAND OFFICE	
OPERATOR	/

RECEIVED
NEW MEXICO OIL CONSERVATION COMMISSION

AUG 17 1978

O. C. C.
ARTESIA, OFFICE

30-015-22646
Form C-101
Revised 1-1-65

5A. Indicate Type of Lease	STATE <input type="checkbox"/>	FEE <input checked="" type="checkbox"/>
5. State Oil & Gas Lease No.	L-1512	

APPLICATION FOR PERMIT TO DRILL, DEEPEN, OR PLUG BACK

1a. Type of Work		7. Unit Agreement Name	
b. Type of Well OIL WELL <input type="checkbox"/> GAS WELL <input checked="" type="checkbox"/> OTHER <input type="checkbox"/>		Gardner Draw Unit	
2. Name of Operator Phoenix Resources Company		8. Farm or Lease Name	
3. Address of Operator P.O. Box 9698 - South Denver Station - Denver, Colorado 80218		9. Well No. 6	
4. Location of Well UNIT LETTER E LOCATED 1980 FEET FROM THE North LINE AND 810 FEET FROM THE West LINE OF SEC. 16 TWP. 19-S RGE. 21-E NMPM		10. Field and Pool, or Wildcat Wildcat	
		12. County Eddy	
		19. Proposed Depth 7300'	
		19A. Formation Morrow	
		20. Rotary or C.T. Rotary	
21. Elevations (show whether DF, RL, etc.) 4355 GR		21A. Kind & Status Plug. Bond Blanket	
		21B. Drilling Contractor Cactus Drilling Company	
		22. Approx. Date Work will start August 21, 1978	

23.

PROPOSED CASING AND CEMENT PROGRAM

SIZE OF HOLE	SIZE OF CASING	WEIGHT PER FOOT	SETTING DEPTH	SACKS OF CEMENT	EST. TOP
17 1/2	13 3/8	48	350	500	circulate
12 1/4	8 5/8	24	1800	1200	circulate
7 7/8	4 1/2	11.60	7300	500	4000

Amended Location

Proposed to drill a Morrow gas well by using rotary tools to approximately 7300'. Cmt. will be circulated on the 13 3/8 and 8 5/8 casing strings. Plan to test significant shows and evaluate with adequate logging program. Completion or abandonment will be performed in accordance with prudent practices and regulatory body requirements. A double ram series 900 BOP and choke manifold will be used from 8 5/8 casing point to total depth.

SEE ATTACHED B.O.P. SKETCH

APPROVAL VALID
FOR 90 DAYS UNLESS
DRILLING COMMENCED,

EXPIRES 11-29-78

IN ABOVE SPACE DESCRIBE PROPOSED PROGRAM: IF PROPOSAL IS TO DEEPEN OR PLUG BACK, GIVE DATA ON PRESENT PRODUCTIVE ZONE AND PROPOSED NEW PRODUCTIVE ZONE. GIVE BLOWOUT PREVENTER PROGRAM, IF ANY.

I hereby certify that the information above is true and complete to the best of my knowledge and belief.

Signed J.W. Drulley Title Agent Date 8-16-78

(This space for State Use)

APPROVED BY W.A. Gress TITLE SUPERVISOR, DISTRICT II DATE AUG 29 1978

CONDITIONS OF APPROVAL, IF ANY:

Cement must be circulated to
surface behind 13 3/8" 48 5/8" casing

Notify N.M.O.C.C. in sufficient
time to witness cementing
the 8 5/8" casing

NEW MEXICO OIL CONSERVATION COMMISSION
WELL LOCATION AND ACREAGE DEDICATION PLAT

Form C-102
Supersedes C-128
Effective 1-1-65

All distances must be from the outer boundaries of the Section.

Operator Phoenix Resources Company			Lease Gardner Draw Unit		Well No. 6
Unit Letter E	Section 16	Township 19 South	Range 21 East	County Eddy	
Actual Footage Location of Well: 1980 feet from the North line and 810 feet from the West line					
Ground Level Elev. 4355	Producing Formation Morrow		Pool Wildcat	Dedicated Acreage: 320 Acres	

1. Outline the acreage dedicated to the subject well by colored pencil or hachure marks on the plat below.
2. If more than one lease is dedicated to the well, outline each and identify the ownership thereof (both as to working interest and royalty).
3. If more than one lease of different ownership is dedicated to the well, have the interests of all owners been consolidated by communitization, unitization, force-pooling, etc?

☐ Yes ☐ No If answer is "yes," type of consolidation Case #6129

If answer is "no," list the owners and tract descriptions which have actually been consolidated. (Use reverse side of this form if necessary.)

No allowable will be assigned to the well until all interests have been consolidated (by communitization, unitization, forced-pooling, or otherwise) or until a non-standard unit, eliminating such interests, has been approved by the Commission.

CERTIFICATION

I hereby certify that the information contained herein is true and complete to the best of my knowledge and belief.

Name J. W. Mullay
Position Agent
Company Phoenix Resources Company
Date 8-16-78

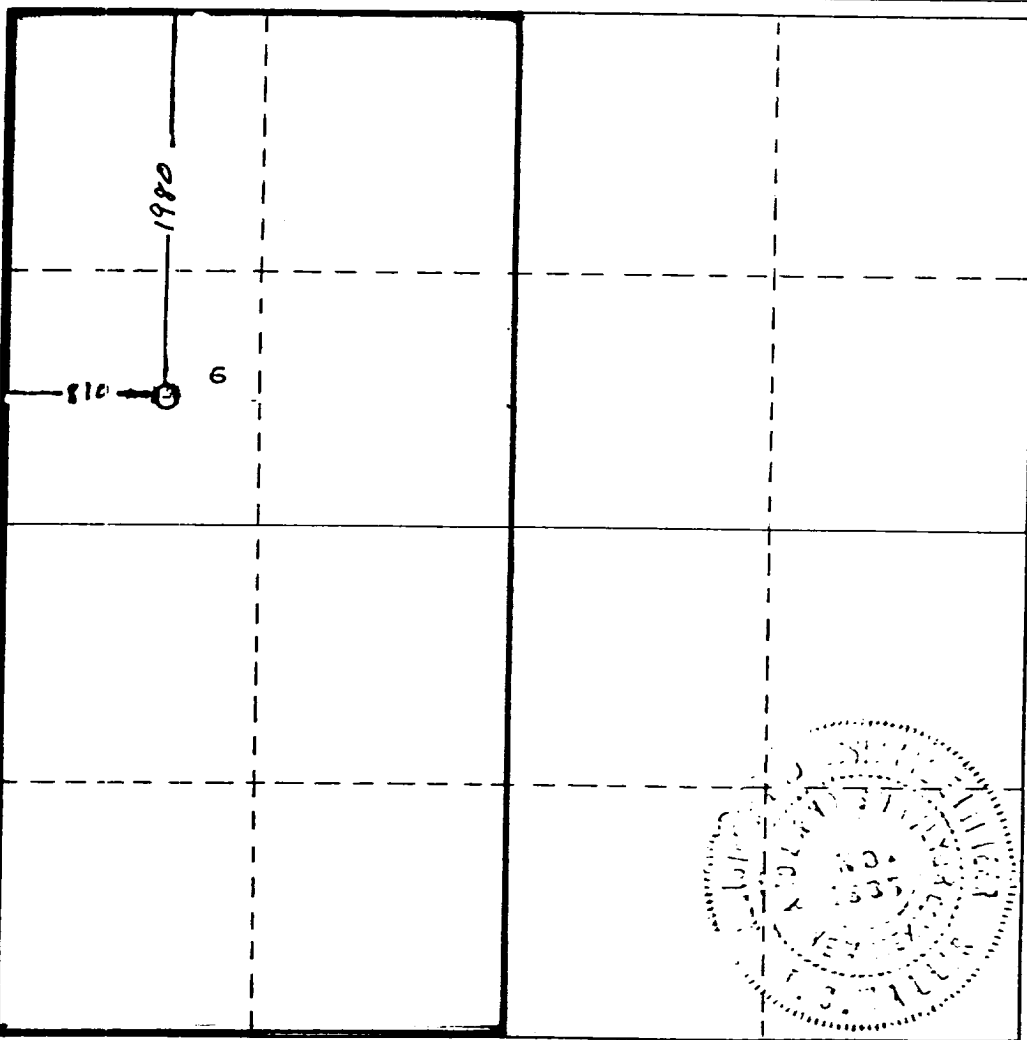
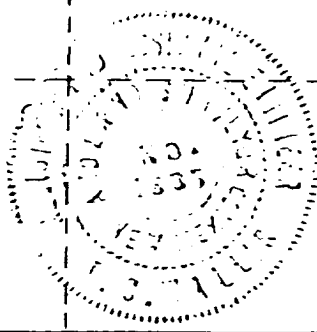
I hereby certify that the well location shown on this plat was plotted from field notes of actual surveys made by me or under my supervision, and that the same is true and correct to the best of my knowledge and belief.

Date Surveyed August 15, 1978

Registered Professional Engineer and/or Land Surveyor

J. O. Wallis

Certificate No.

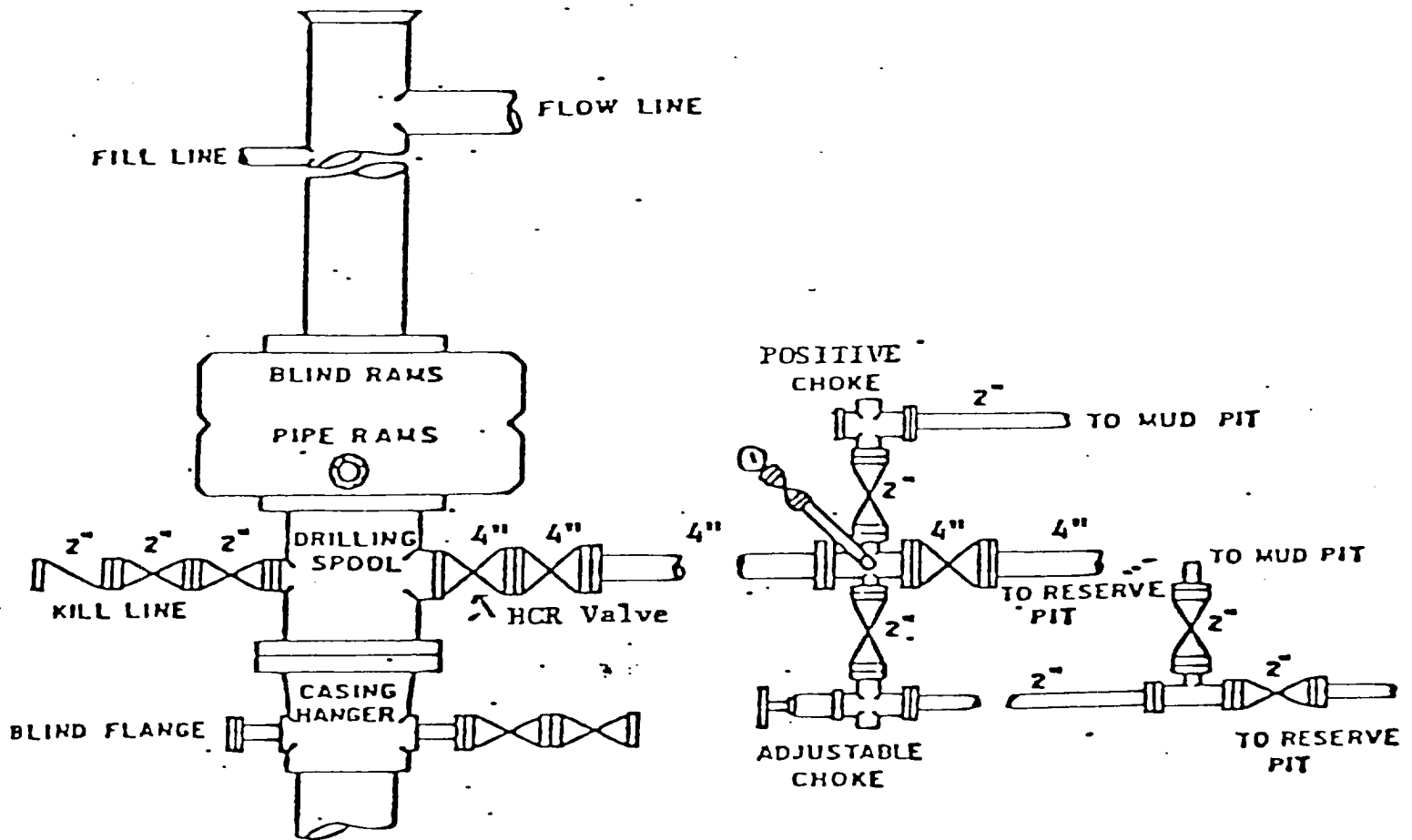


1 - 7 station Koomey Accumulator

1 - Koomey Remote Stand

5000 WP Manifold

1 - 10⁰ Shaeffer Double BOP 900 Series, 3000 WP



BOP Sketch