

NM OIL CONS-COMMISSION  
Drawer DD  
Artesia, UNITED STATES  
DEPARTMENT OF THE INTERIOR  
GEOLOGICAL SURVEYSUBMIT IN TRIPLICATE\*  
(Other instructions on  
reverse side)Form approved.  
Budget Bureau No. 42-R1425.

## APPLICATION FOR PERMIT TO DRILL, DEEPEN, OR PLUG BACK

## 1a. TYPE OF WORK

DRILL ☒DEEPEN ☐PLUG BACK ☐

## b. TYPE OF WELL

OIL  
WELL ☒GAS  
WELL ☐OTHER ☐SINGLE  
ZONE ☐MULTIPLE  
ZONE ☒

## 2. NAME OF OPERATOR

Exxon Corporation

RECEIVED

## 3. ADDRESS OF OPERATOR

P. O. Box 1600, Midland, TX 79072

## 4. LOCATION OF WELL (Report location clearly and in accordance with any State requirements.)

At surface

2180' FSL and 1980' FEL of Section

At proposed prod. zone

## 14. DISTANCE IN MILES AND DIRECTION FROM NEAREST TOWN OR POST OFFICE\*

17.4 miles East from Artesia

15. DISTANCE FROM PROPOSED\* 460' lse. line  
LOCATION TO NEAREST  
PROPERTY OR LEASE LINE, FT.  
(Also to nearest drlg. unit line, if any) 460' drlg line

## 16. NO. OF ACRES IN LEASE

1448.11

17. NO. OF ACRES ASSIGNED  
TO THIS WELL

40

18. DISTANCE FROM PROPOSED LOCATION\*  
TO NEAREST WELL, DRILLING, COMPLETED,  
OR APPLIED FOR, ON THIS LEASE, FT.

1867' NE to #2

## 19. PROPOSED DEPTH

2300'

## 20. ROTARY OR CABLE TOOLS

Rotary

## 21. ELEVATIONS (Show whether DF, RT, GR, etc.)

3643' GR

## 22. APPROX. DATE WORK WILL START\*

December 6, 1982

## 23.

## PROPOSED CASING AND CEMENTING PROGRAM

SIZE OF HOLE	SIZE OF CASING	WEIGHT PER FOOT	SETTING DEPTH	QUANTITY OF CEMENT
12 1/4"	8 5/8"	24#	350'	225 sx CIRCULATE
7 7/8"	5 1/2"	14#	2300'	650 sx

Gas is not dedicated to a purchaser.

RECEIVED  
NOV 10 1982MINERAL SERVICE  
ROSWELL, NEW MEXICO

IN ABOVE SPACE DESCRIBE PROPOSED PROGRAM: If proposal is to deepen or plug back, give data on present productive zone and proposed new productive zone. If proposal is to drill or deepen directionally, give pertinent data on subsurface locations and measured and true vertical depths. Give blowout preventer program, if any.

24. SIGNED George H. Stewart TITLE Unit Head DATE November 9, 1982

(This space for Federal or State office use)

(Orig. Sgd.) GEORGE H. STEWART

PERMIT NO.

APPROVAL DATE

APPROVED BY

TITLE

DATE

CONDITIONS OF APPROVAL, IF ANY:

NOV 23 1982  
JAMES A. GILHAM  
DISTRICT SUPERVISOR



Federal Lse. No. \_\_\_\_\_ All distances must be from the outer boundaries of the Section.

Operator <b>Exxon Corporation</b>		Lease <b>Ryan Federal</b>		Well No. <b>4</b>
Unit Letter <b>J</b>	Section <b>19</b>	Township <b>16 S</b>	Range <b>29 E</b>	County <b>Eddy</b>

Actual Footage Location of Well:

**2180** feet from the **South** line and **1980** feet from the **East** line

Ground Level Elev: <b>3643</b>	Producing Formation <b>Penrose</b>	Pool <b>Undesignated</b>	Dedicated Acreage: <b>40</b> Acres
-----------------------------------	---------------------------------------	-----------------------------	---------------------------------------

1. Outline the acreage dedicated to the subject well by colored pencil or hachure marks on the plat below.
2. If more than one lease is dedicated to the well, outline each and identify the ownership interest (both as to working interest and royalty).
3. If more than one lease of different ownership is dedicated to the well, have the interests of all owners been consolidated by communitization, unitization, force-pooling, etc?

☐ Yes ☐ No If answer is "yes," type of consolidation \_\_\_\_\_

If answer is "no," list the owners and tract descriptions which have actually been consolidated. (Use reverse side of this form if necessary.) \_\_\_\_\_

No allowable will be assigned to the well until all interests have been consolidated (by communitization, unitization, forced-pooling, or otherwise) or until a non-standard unit, eliminating such interests, has been approved by the Commission.

#### CERTIFICATION

I hereby certify that the information contained herein is true and complete to the best of my knowledge and belief.

Name  
*Melba Kripling*

Position  
**UNIT HEAD**

Company **Exxon Corporation**  
Box 1600 Midland, Texas

Date  
**11-4-82**

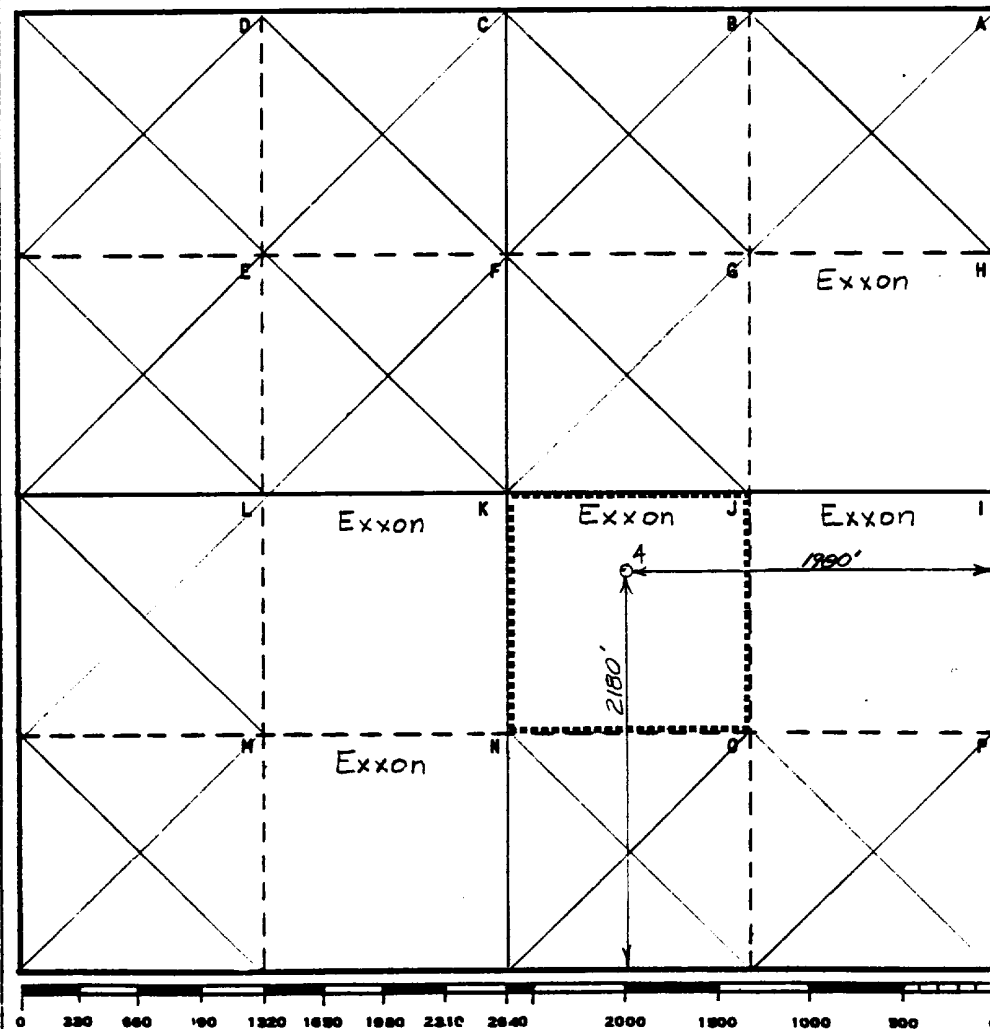
I hereby certify that the well location shown on this plat was plotted from field notes of actual surveys made by me or under my supervision, and that the same is true and correct to the best of my knowledge and belief.

Date Surveyed  
**11-4-82**

Registered Professional Engineer  
and/or Land Surveyor

*W. J. Lumbard*

Certificate No.  
**6157**



**17.4** Miles **E** of **Artesia**, New Mexico

C.E. Sec. File No. **WA-7923-4**



Exxon Lse. No. \_\_\_\_\_ NEW MEXICO OIL CONSERVATION COMMISSION  
State Lse. No. \_\_\_\_\_ WELL LOCATION AND ACREAGE DEDICATION PLAT

Form C-102  
Supersedes C-128  
Effective 1-1-65

Federal Lse. No. \_\_\_\_\_ All distances must be from the outer boundaries of the Section.

Operator <b>Exxon Corporation</b>		Lease <b>Ryan Federal</b>		Well No. <b>4</b>
Unit Letter <b>J</b>	Section <b>19</b>	Township <b>16S</b>	Range <b>29E</b>	County <b>Eddy</b>
Actual Footage Location of Well: <b>2180</b> feet from the <b>South</b> line and <b>1980</b> feet from the <b>East</b> line				
Ground Level Elev. <b>- 3643</b>	Producing Formation <b>Premier</b>	Pool <b>Undesignated</b>	Dedicated Acreage: <b>40</b> Acres	

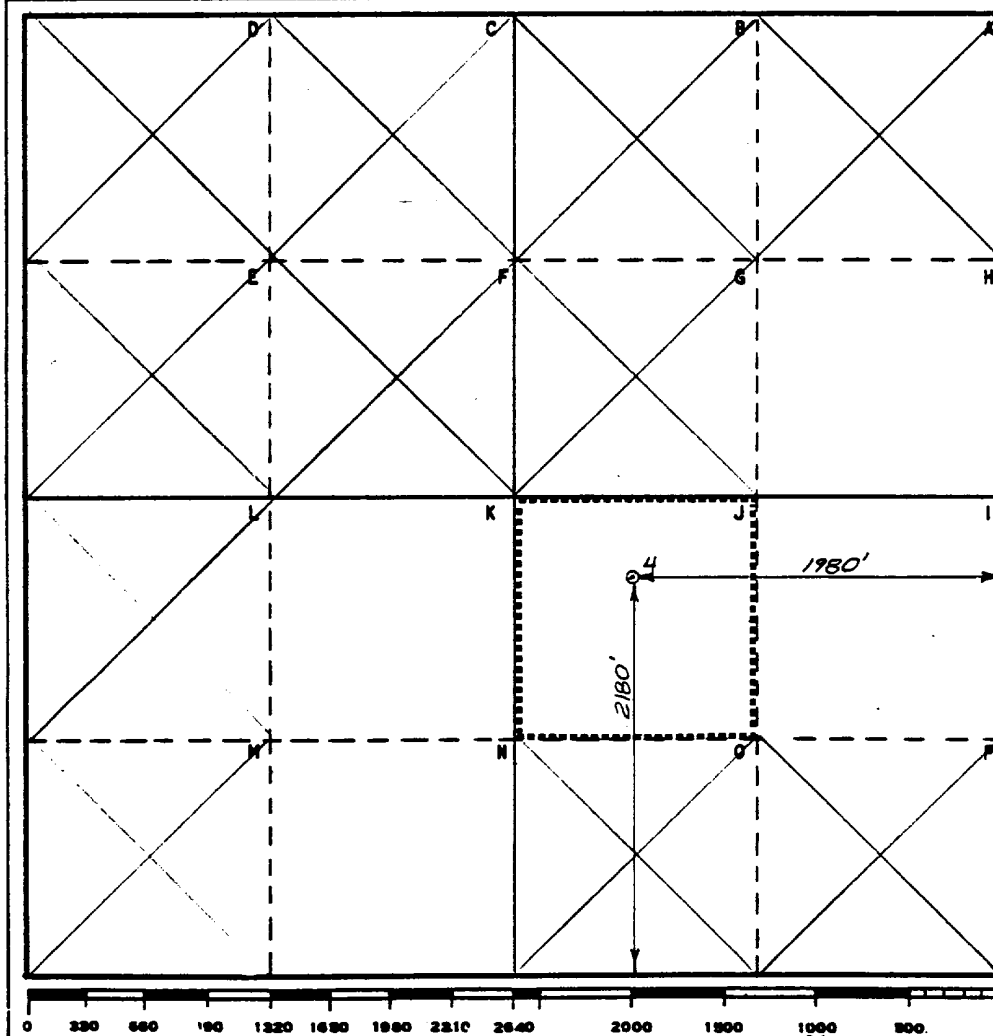
1. Outline the acreage dedicated to the subject well by colored pencil or hachure marks on the plat below.
2. If more than one lease is dedicated to the well, outline each and identify the ownership thereof (both as to working interest and royalty).
3. If more than one lease of different ownership is dedicated to the well, have the interests of all owners been consolidated by communitization, unitization, force-pooling, etc?

☐ Yes ☐ No If answer is "yes," type of consolidation \_\_\_\_\_

**O. C. D.**  
ARTESIA, OFFICE

If answer is "no," list the owners and tract descriptions which have actually been consolidated. (Use reverse side of this form if necessary.) \_\_\_\_\_

No allowable will be assigned to the well until all interests have been consolidated (by communitization, unitization, forced-pooling, or otherwise) or until a non-standard unit, eliminating such interests, has been approved by the Commission.



**CERTIFICATION**

I hereby certify that the information contained herein is true and complete to the best of my knowledge and belief.

Name  
**Melba Knippling**

Position  
**UNIT HEAD**

Company **Exxon Corporation**  
**Box 1600 Midland, Texas**

Date  
**11-4-82**

I hereby certify that the well location shown on this plat was plotted from field notes of actual surveys made by me or under my supervision, and that the same is true and correct to the best of my knowledge and belief.

Date Surveyed  
**11-4-82**

Registered Professional Engineer and/or Land Surveyor

**W. J. Korman**  
Certificate No.  
**6157**

**17.4** Miles **E** of **Artesia**, New Mexico

C.E. Sec. File No. **WA-7923-4**



RYAN FEDERAL #4  
Ten Point Plan  
Eddy County, New Mexico  
Federal Lease No. NM-9987

1. The geologic name of the surface formation: Recent.

2. The estimated tops of important geologic markers:

Salado	280'
Yates	700'
Seven Rivers	920'
Queen	1675'
Grayburg	1830'
Premier Sand	2190'

3. The estimated depths at which anticipated water, oil, gas, or other mineral bearing formations are expected to occur:

Water	0-280'
Oil & Gas - Queen	
Oil - Seven Rivers	

4. Proposed Casing Program:

<u>String</u>	<u>Size</u>	<u>Weight/Grade</u>	<u>Condition</u>	<u>Depth Interval</u>
Surface	8 5/8"	24/K-55/STC	New or Used	0- 350'
Production	5 1/2"	14/K-55/STC	New or Used	0-2300'

5. Minimum specifications for pressure control equipment.

a. Wellhead Equipment - Threaded type 2000 psi WP for 8 5/8" x 5 1/2" casing program and 2 7/8" tubing.

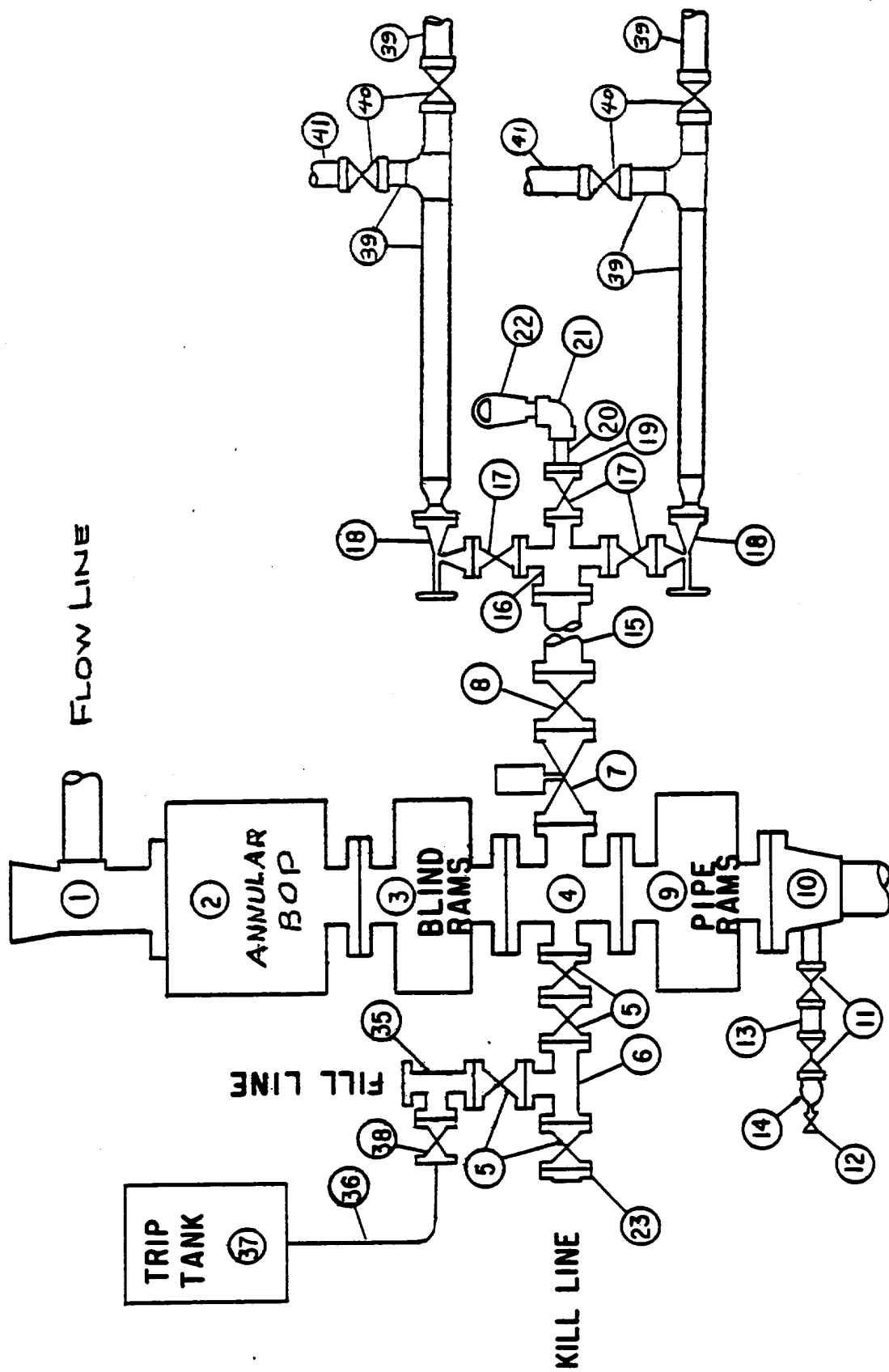
b. Blowout Preventers - Refer to attached drawing and list of equipment title "Type II-C" for description of BOP stack and choke manifold.

c. BOP Control Unit - Unit will be hydraulically operated and have at least 4 control stations.

d. Testing - When installed on 8 5/8" surface casing the BOP stack will be tested to a low pressure (200-300 psi) and to 2000 psi. Casing rams will be tested in like manner when installed prior to running production casing. An operational test of the blowout preventers will be performed on each round trip (but not more than once each day); the annular and pipe ram preventers will be closed on drill pipe, and the blind rams will be closed while pipe is out of the hole.



# MIDLAND DRILLING ORGANIZATION BLOWOUT PREVENTER SPECIFICATION TYPE II - C





BLOWOUT PREVENTER SPECIFICATI  
EQUIPMENT DESCRIPTION

TYPE II-C

All equipment should be at least 2000 psi WP or higher unless otherwise specified.

1. Bell nipple.
2. Hydril or Shaffer bag type preventer.
3. Ram type pressure operated blowout preventer with blind rams.
4. Flanged spool with one 4-inch and one 2-inch (minimum) outlet.
5. 2-inch (minimum) flanged plug or gate valve.
6. 2-inch by 2-inch by 2-inch (minimum) flanged tee.
7. 4-inch pressure operated gate valve.
8. 4-inch flanged gate or plug valve.
9. Ram type pressure operated blowout preventer with pipe rams.
10. Flanged type casing head with one side outlet (furnished by Exxon).
11. 2-inch threaded (or flanged) plug or gate valve (furnished by Exxon).  
Flanged on 5000# WP, threaded on 3000# WP or less.
12. Needle valve (furnished by Exxon).
13. 2-inch nipple (furnished by Exxon).
14. Tapped bull plug (furnished by Exxon).
15. 4-inch flanged spacer spool.
16. 4-inch by 2-inch by 2-inch by 2-inch flanged cross.
17. 2-inch flanged plug or gate valve.
18. 2-inch flanged adjustable choke.
19. 2-inch threaded flange.
20. 2-inch XXH nipple.
21. 2-inch forged steel 90° Ell.
22. Cameron (or equal.) threaded pressure gage.
23. Threaded flange.
35. 2-inch flanged tee.
36. 3-inch (minimum) hose. (Furnished by Exxon).
37. Trip tank. (Furnished by Exxon).
38. 2-inch flanged plug or gate valve.
39. 2-1/2-inch pipe, 300' to pit, anchored.
40. 2-1/2-inch SE valve.
41. 2-1/2-inch line to steel pit or separator.

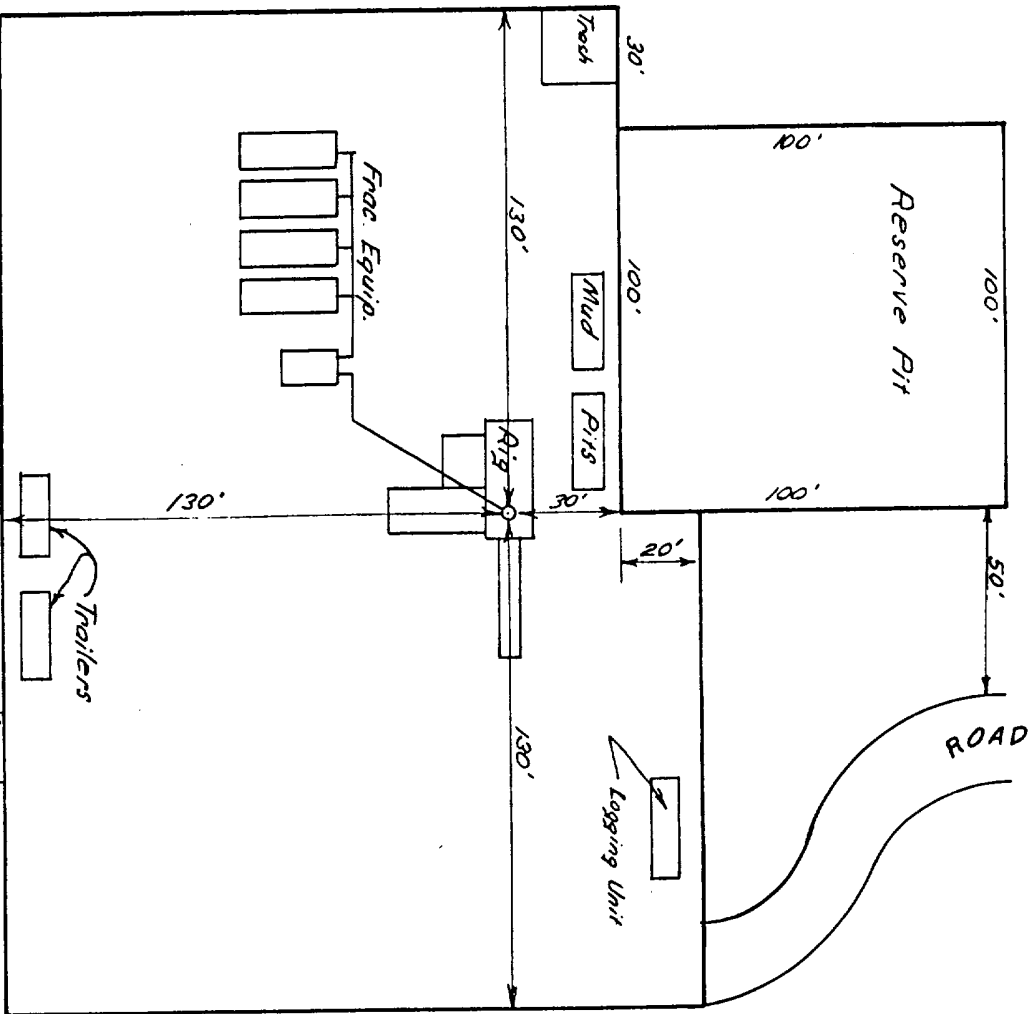
NOTES:

1. Items 3, 4 and 9 may be replaced with double ram type preventer with side outlets between the rams.
2. The two valves next to the stack on the fill and kill line to be closed unless drill string is being pulled.
3. Kill line is for emergency use only. This connection shall not be used for filling.
4. Replacement pipe rams and blind rams shall be on location at all times.
5. Only type U, LWS and QRC ram type preventers with secondary seals are acceptable for 5000 psi WP and higher BOP stacks.
6. Type E ram-type BOP's with factory modified side outlets may be used on 3000 psi or lower WP BOP stacks.





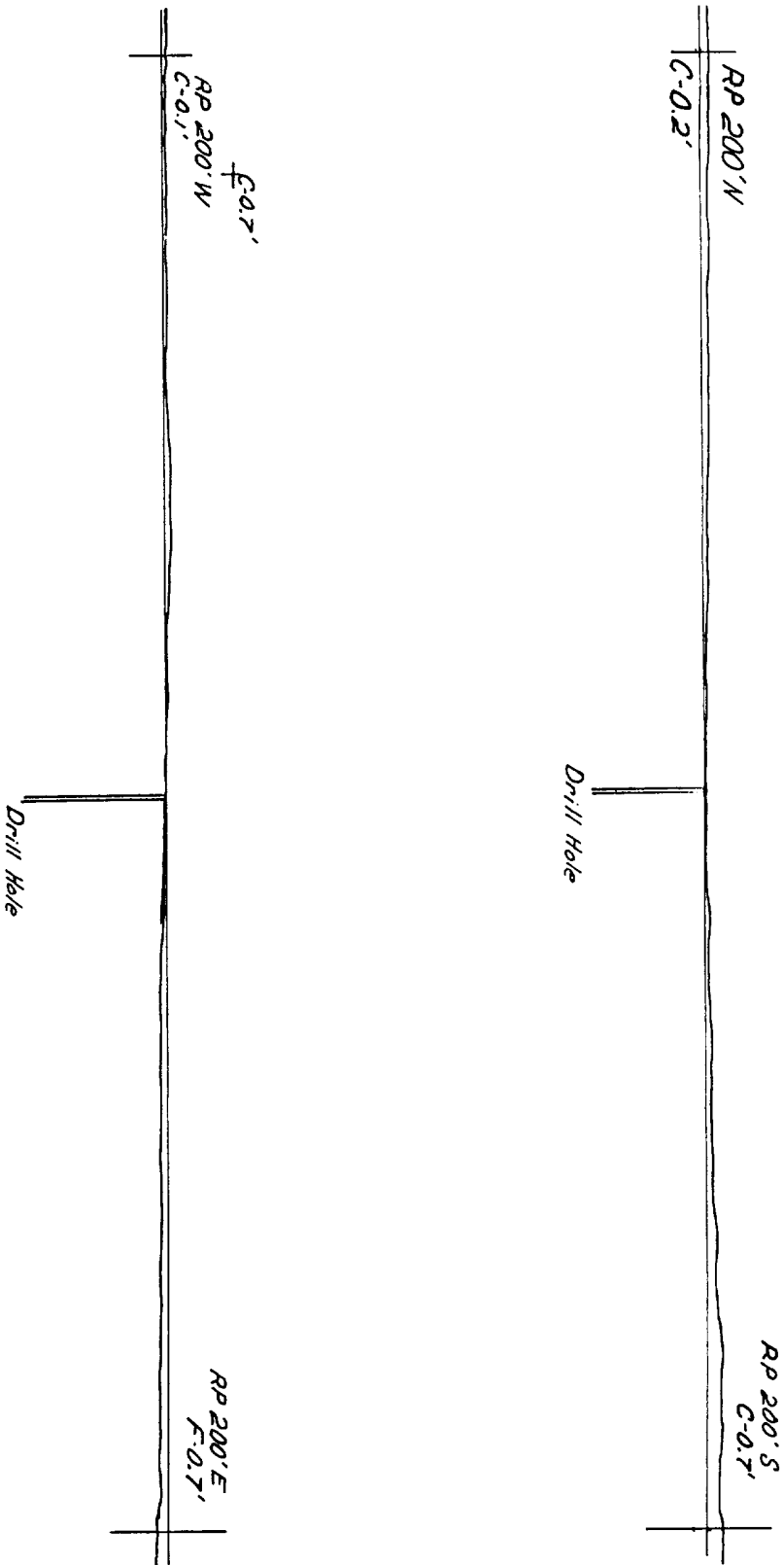




WELL SITE LAYOUT

SCALE: 1" = 50'

ROAD TO EXXON'S  
RYAN FED. #3



CROSS SECTIONS

SCALE: 1" = 50' Hor.  
1" = 10' Vert.

EXHIBIT "B"

EXXON'S RYAN FEDERAL #4 SECTION 19, T-16-S, R-29-E, 3rd PM EDDY COUNTY, NEW MEXICO		EXXON COMPANY, U.S.A. (a division of Exxon Corporation) PRODUCTION DEPARTMENT	
DRAWN C.S.S.	ENGR. SECTION Civil	DATE 11/8/82	JOB NO.
CHECKED	APPROVED	SCALE shown	FILE NO.
		WB-1801A	