

UNITED STATES SEP 19 1984
DEPARTMENT OF THE INTERIOR

GEOLOGICAL SURVEY

O. C. D.

ARTESIA, OFFICE

APPLICATION FOR PERMIT TO DRILL, DEEPEN, OR PLUG BACK

1a. TYPE OF WORK

DRILL ☒DEEPEN ☐PLUG BACK ☐

b. TYPE OF WELL

OIL
WELL ☒GAS
WELL ☐

OTHER

SINGLE
ZONE ☐MULTIPLE
ZONE ☐

2. NAME OF OPERATOR

The Superior Oil Company ✓

3. ADDRESS OF OPERATOR

P.O. Box 3901, Midland, Texas 79702

4. LOCATION OF WELL (Report location clearly and in accordance with any State requirements.)*

At surface 399' FNL, 1980' FEL, Section 1

At proposed prod. zone Same

14. DISTANCE IN MILES AND DIRECTION FROM NEAREST TOWN OR POST OFFICE*

10 miles NE from Hobbs, NM

15. DISTANCE FROM PROPOSED*

LOCATION TO NEAREST
PROPERTY OR LEASE LINE, FT.
(Also to nearest drig. unit line, if any)

16. NO. OF ACRES IN LEASE

776.2

17. NO. OF ACRES ASSIGNED
TO THIS WELL

40

18. DISTANCE FROM PROPOSED LOCATION*

TO NEAREST WELL, DRILLING, COMPLETED,
OR APPLIED FOR, ON THIS LEASE, FT.

19. PROPOSED DEPTH

6000'

20. ROTARY OR CABLE TOOLS

Rotary

21. ELEVATIONS (Show whether DF, RT, GR, etc.)

3202' GR

22. APPROX. DATE WORK WILL START*

November 15, 1984

23. PROPOSED CASING AND CEMENTING PROGRAM

SIZE OF HOLE	SIZE OF CASING	WEIGHT PER FOOT	SETTING DEPTH	QUANTITY OF CEMENT
17-1/2"	13-3/8"	54.5	650'	675 SX
11"	8-5/8"	24	2400-2500	720 SX
7-7/8"	5-1/2"	15.5	6000'	690 SX

Attachments: Supplemental Drilling Data
BOP. Sketches
Rig Equipment List
Multi-Point Surface Use and Operations Plan
Archaeological Clearance Report.

Gas is Dedicated

IN ABOVE SPACE DESCRIBE PROPOSED PROGRAM: If proposal is to deepen or plug back, give data on present productive zone and proposed new productive zone. If proposal is to drill or deepen directionally, give pertinent data on subsurface locations and measured and true vertical depths. Give blowout preventer program, if any.

24.

SIGNED G.E. TateTITLE Division Opr. Supt.DATE 9-11-84

(This space for Federal or State office use)

PERMIT NO.

APPROVAL DATE

APPROVED BY Charles J. Tate

TITLE

AREA ARTESIA
CERLEAD RESOURCES AREADATE 9-18-84

CONDITIONS OF APPROVAL, IF ANY:

APPROVAL SUBJECT TO
GENERAL REQUIREMENTS AND
SPECIAL STIPULATIONS
ATTACHED

Partial ID
AP, & NL
9-28-84

**NEW MEXICO OIL CONSERVATION COMMISSION
WELL LOCATION AND ACREAGE DEDICATION PLAT**

Form C-102
Supersedes C-128
Effective 1-1-65

All distances must be from the outer boundaries of the Section.

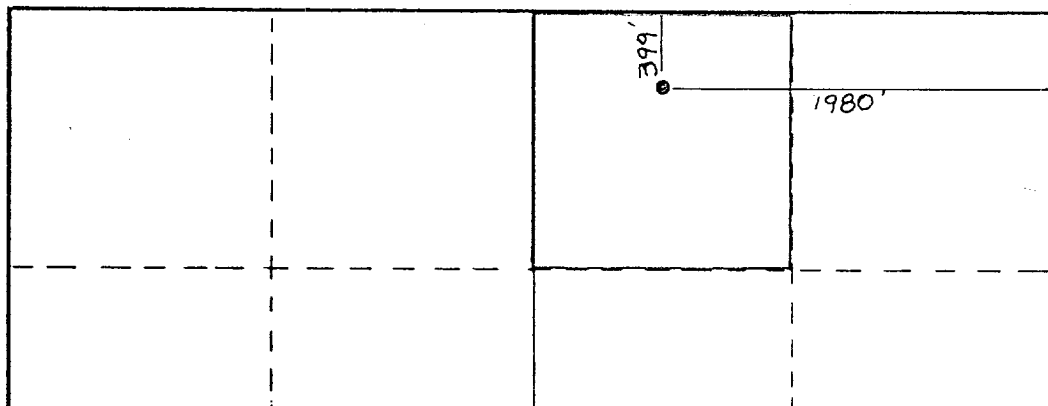
Operator THE SUPERIOR OIL COMPANY			Lease Government D		Well No. 3
Unit Letter B	Section 1	Township 21 South	Range 27 East	County Eddy	
Actual Footage Location of Well: 399 feet from the North line and 1980 feet from the East line					
Ground Level Elev. 3202.	Producing Formation Bone Spring		Pool Wildcat		Dedicated Acreage: 40 Acres

1. Outline the acreage dedicated to the subject well by colored pencil or hatchure marks on the plat below.
2. If more than one lease is dedicated to the well, outline each and identify the ownership thereof (both as to working interest and royalty).
3. If more than one lease of different ownership is dedicated to the well, have the interests of all owners been consolidated by communitization, unitization, force-pooling, etc?

☐ Yes ☐ No If answer is "yes," type of consolidation _____

If answer is "no," list the owners and tract descriptions which have actually been consolidated. (Use reverse side of this form if necessary.) _____

No allowable will be assigned to the well until all interests have been consolidated (by communitization, unitization, forced-pooling, or otherwise) or until a non-standard unit, eliminating such interests, has been approved by the Commission.



CERTIFICATION

I hereby certify that the information contained herein is true and complete to the best of my knowledge and belief.

[Signature]

Name

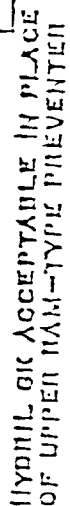
G. E. Tate

Position

Division Operations Supt.

Company

The Superior Oil Company



- 157

1. 3000 PSI WP CLAMP
HUBS MAY BE SUBSTITUTED
FOR FLANGES

2. VALVES MAY BE EITHER HAND OR POWER OPERATED BUT, IF POWER OPERATED, THE VALVES FLANGED TO THE DOWNHILL MUST BE CAPABLE OF BEING OPENED AND CLOSED MANUALLY OR CLOSE ON POWER FAILURE AND BE CAPABLE OF BEING OPENED MANUALLY.

..... OPTIONAL EQUIPMENT

3000 PSI WORKING PRESSURE
BLOW OUT PREVENTER HOOK-UP
(SERIES 000 FLANGES OR DETTIE

Government "D" #3

600'

125'

RESERVE
PIT

10' X 30'
BURN PIT

100'

50'

MUD TANKS

70'

PIPE
RACKS

30'

15'

200'

200'

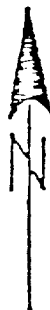
150'

TRAILERS

4 X 30'
TRASH PIT

ACCESS ROAD

AREA CLEARED BY ARCHAEOLOGICAL SURVEY



THE SUPERIOR OIL CO.
WESTERN DIVISION



WELL SITE LAYOUT

Government D # 3