

UNITED STATES
DEPARTMENT OF THE INTERIOR
GEOLOGICAL SURVEY

SUBMIT **TRIPPLICATE**
(Other instructions on
reverse side)

Form approved.
Budget Bureau No. 42-B1425.

30-015-25478

APPLICATION FOR PERMIT TO DRILL, DEEPEN, OR PLUG BACK

1a. TYPE OF WORK

DRILL ☒

DEEPEN ☐

PLUG BACK ☐

b. TYPE OF WELL

OIL
WELL ☒

GAS
WELL ☐

OTHER

SINGLE
ZONE ☐

MULTIPLE
ZONE ☐

2. NAME OF OPERATOR

Siete Oil and Gas Corporation

3. ADDRESS OF OPERATOR

P.O. Box 2523, Roswell, NM 88201

4. LOCATION OF WELL (Report location clearly and in accordance with any State requirements.)

At surface

990' FNL & 2310' FWL, NE/4 NW/4, Unit Letter O.C.D. U/C

At proposed prod. zone

RECEIVED BY

NOV 15 1985

ARTESIA, OFFICE

5. LEASE DESIGNATION AND SERIAL NO.

NM-14840

6. IF INDIAN, ALLOTTEE OR TRIBE NAME

7. UNIT AGREEMENT NAME

8. FARM OR LEASE NAME

Dalton Federal

9. WELL NO.

2

10. FIELD AND POOL, OR WILDCAT

X Grayburg-Jackson

11. SEC., T., R., M., OR BLK.
AND SURVEY OR AREA

Section 29: T17S, R29E

12. COUNTY OR PARISH 13. STATE

Eddy

NM

14. DISTANCE IN MILES AND DIRECTION FROM NEAREST TOWN OR POST OFFICE

15 miles East of Artesia, NM

15. DISTANCE FROM PROPOSED
LOCATION TO NEAREST
PROPERTY OR LEASE LINE, FT.
(Also to nearest drig. unit line, if any)

330'

16. NO. OF ACRES IN LEASE

320

17. NO. OF ACRES ASSIGNED
TO THIS WELL

40

18. DISTANCE FROM PROPOSED LOCATION
TO NEAREST WELL, DRILLING, COMPLETED,
OR APPLIED FOR, ON THIS LEASE, FT.

2100'

19. PROPOSED DEPTH

3600'

20. ROTARY OR CABLE TOOLS

Rotary

21. ELEVATIONS (Show whether DF, RT, GR, etc.)

3609' GR

22. APPROX. DATE WORK WILL START

November 5, 1985

23. PROPOSED CASING AND CEMENTING PROGRAM

SIZE OF HOLE	SIZE OF CASING	WEIGHT PER FOOT	SETTING DEPTH	QUANTITY OF CEMENT
17 1/2"	13 3/8"	48.0#	350'	250 sxs (Circulate)
7 7/8"	5 1/2"	15.5#	T.D.	1500 sxs

Selectively perforated and treat pay zone

Attachments: Survey Plat (C-102)
Supplemental Drilling Data
Surface Use Plan

Posted IDI
API-NL
11-19-85

IN ABOVE SPACE DESCRIBE PROPOSED PROGRAM: If proposal is to deepen or plug back, give data on present productive zone and proposed new productive zone. If proposal is to drill or deepen directionally, give pertinent data on subsurface locations and measured and true vertical depths. Give blowout preventer program, if any.

24.

SIGNED

TITLE

President

DATE

10/30/85

(This space for Federal or State office use)

PERMIT NO.

APPROVAL DATE

APPROVED BY

TITLE

DATE

11-14-85

CONDITIONS OF APPROVAL, IF ANY:

APPROVAL SUBJECT TO
GENERAL REQUIREMENTS AND
SPECIAL STIPULATIONS

Instructions

General: This form is designed for submitting proposals to perform certain well operations, as indicated, on all types of lands and leases for appropriate action by either a Federal or a State agency, or both, pursuant to applicable Federal and/or State laws and regulations. Any necessary special instructions concerning the use of this form and the number of copies to be submitted, particularly with regard to local, area, or regional procedures and practices, either are shown below or will be issued by, or may be obtained from, the local Federal and/or State office.

Item 1: If the proposal is to redrill to the same reservoir at a different subsurface location or to a new reservoir, use this form with appropriate notations. Consult applicable State or Federal regulations concerning subsequent work proposals or reports on the well.

Item 4: If there are no applicable State requirements, locations on Federal or Indian land should be described in accordance with Federal requirements. Consult local State or Federal office for specific instructions.

Item 14: Needed only when location of well cannot readily be found by road from the land or lease description. A plat, or plats, separate or on this reverse side, showing the roads to, and the surveyed location of, the well, and any other required information, should be furnished when required by Federal or State agency offices.

Items 15 and 18: If well is to be, or has been directionally drilled, give distances for subsurface location of hole in any present or objective production zone.

Item 22: Consult applicable Federal or State regulations, or appropriate officials, concerning approval of the proposal before operations are started.

**NEW MEXICO OIL CONSERVATION COMMISSION
WELL LOCATION AND ACREAGE DEDICATION PLAT**

Form C-102
Supersedes C-128
Effective 1-1-65

All distances must be from the outer boundaries of the Section.

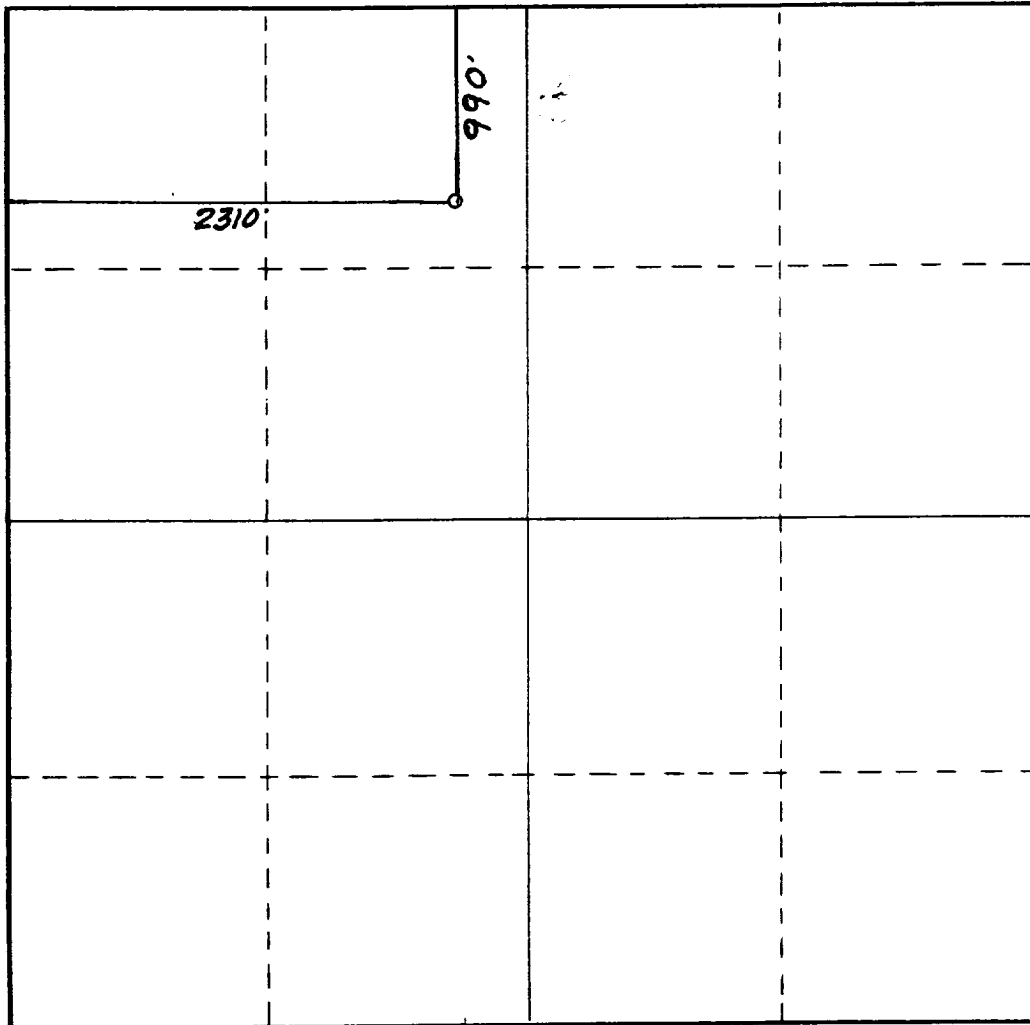
Operator SIETE OIL & GAS CORPORATION			Lease Dalton Federal		Well No. 2
Unit Letter C	Section 29	Township 17 South	Range 29 East	County Eddy	
Actual Footage Location of Well: <div style="display: flex; justify-content: space-between;"> 990 feet from the North line and 2310 feet from the West line </div>					
Ground Level Elev. 3609.	Producing Formation Grayburg	Pool Grayburg-Jackson		Dedicated Acreage: 40 Acres	

1. Outline the acreage dedicated to the subject well by colored pencil or hatchure marks on the plat below.
2. If more than one lease is dedicated to the well, outline each and identify the ownership thereof (both as to working interest and royalty).
3. If more than one lease of different ownership is dedicated to the well, have the interests of all owners been consolidated by communitization, unitization, force-pooling, etc?

☐ Yes ☐ No If answer is "yes," type of consolidation _____

If answer is "no," list the owners and tract descriptions which have actually been consolidated. (Use reverse side of this form if necessary.) _____

No allowable will be assigned to the well until all interests have been consolidated (by communitization, unitization, forced-pooling, or otherwise) or until a non-standard unit, eliminating such interests, has been approved by the Commission.



CERTIFICATION

I hereby certify that the information contained herein is true and complete to the best of my knowledge and belief.

Name
Billy G. Underwood, Jr.

Position
President

Company
Siete Oil and Gas Corporation

Date
October 29, 1985

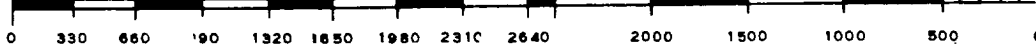
I hereby certify that the well location shown on this plat was plotted from field notes of actual surveys made by me or under my supervision, and that the same is true and correct to the best of my knowledge and belief.

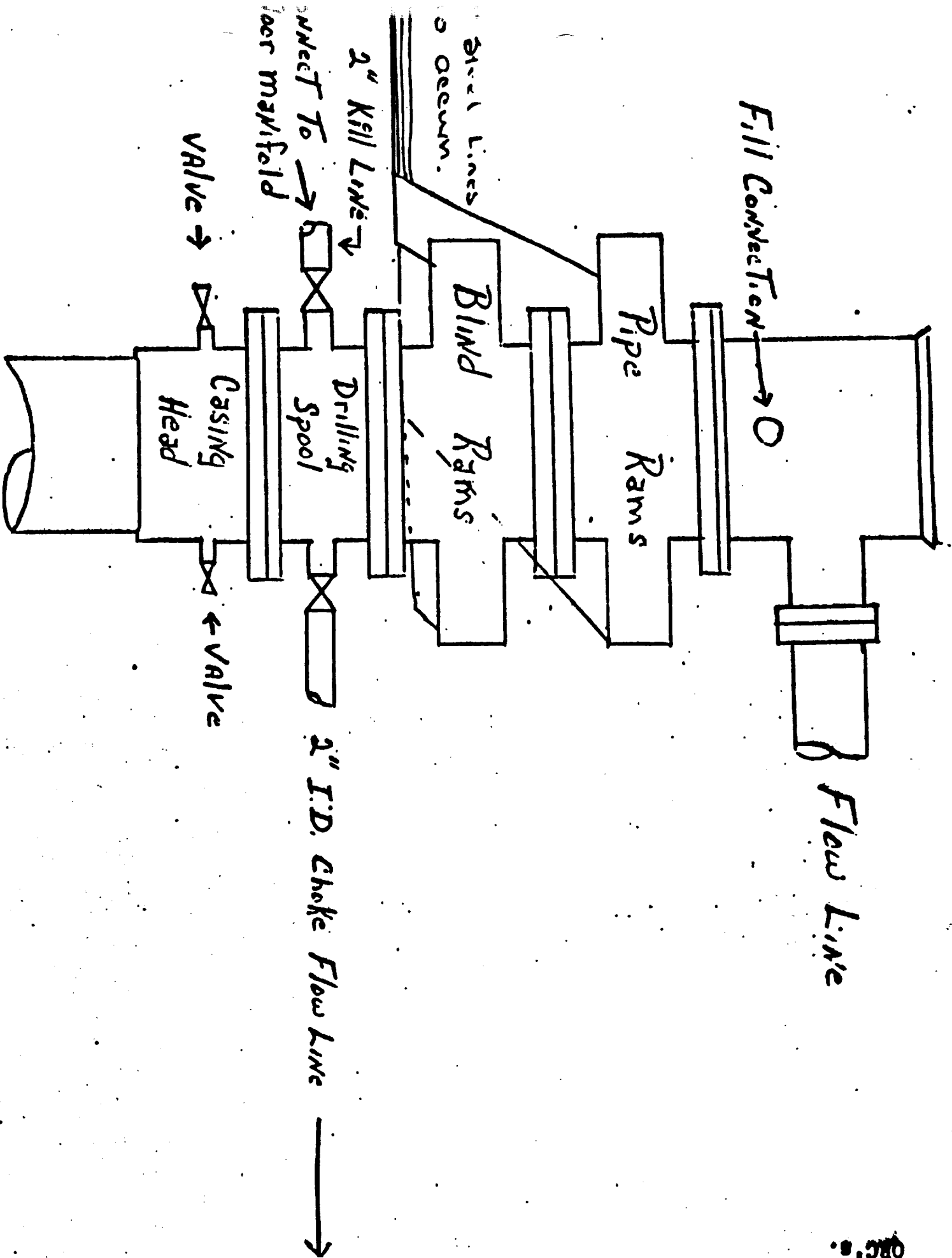
Date Surveyed
October 25, 1985

Registered Professional Engineer and/or Land Surveyor

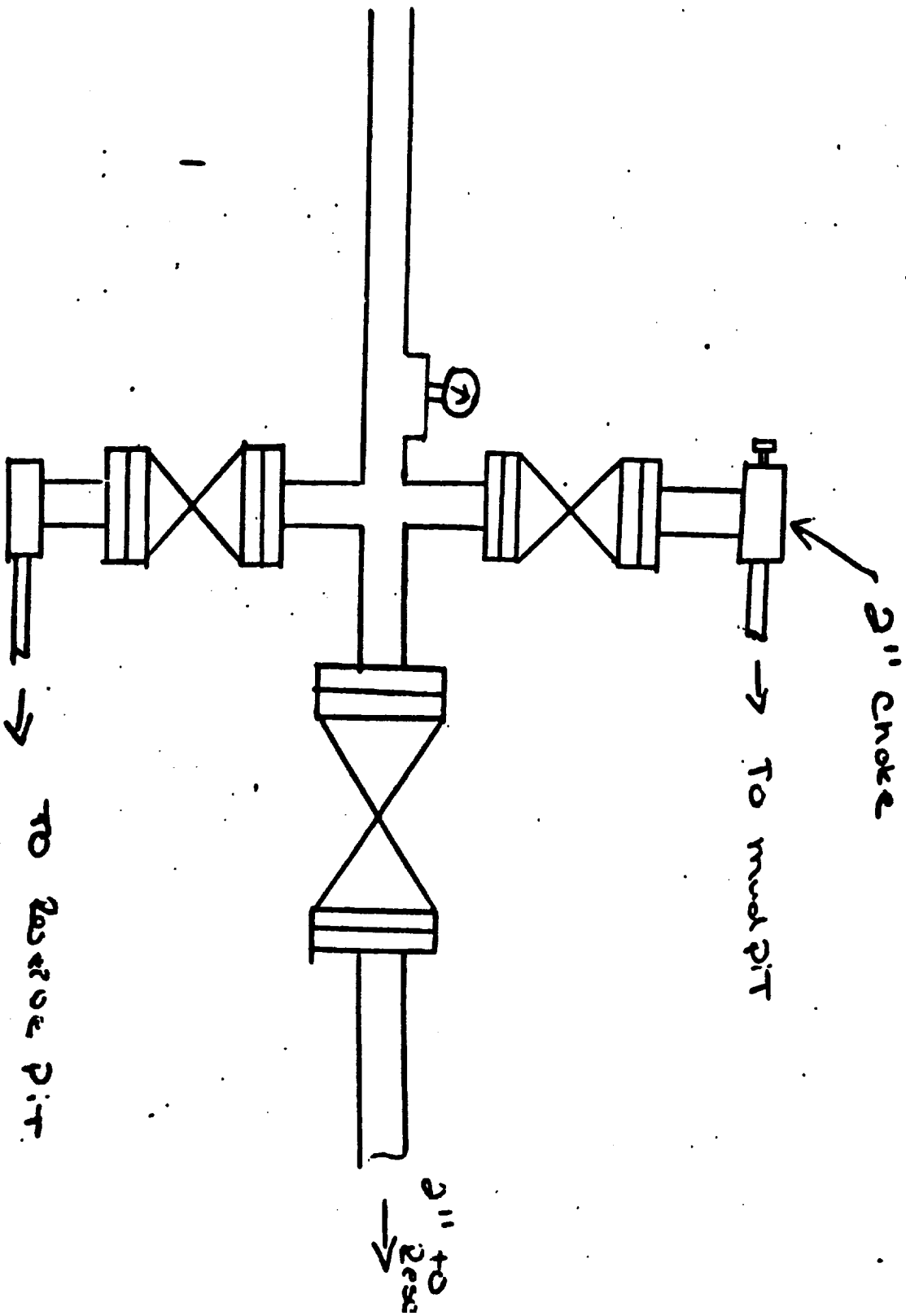
Dan R. Reddy
Certificate No.

NM PE&LS NO. 5412





BOP Hookups for large casing.
 Pipe & Blind Rams are hydraulic
 operated, Cameron 10" 5000#
 QRC's.



Accumulator

are operated,
by gal. reservoir

1st & 2nd lines &
Pipe Rams & Bl.
Rams

SUPPLEMENTAL DRILLING DATA
SIETE OIL AND GAS CORPORATION
Dalton Federal #2
990' FNL & 2310' FWL
Section 29: T17S, R29E
Eddy County, New Mexico
Lease Number - NM 14840

The following items supplement "Onshore Oil and Gas Order No. 1:

1. The geologic surface is quaternary.
2. The estimated geological marker tops:

Yates	800'	Seven Rivers	900'
Bowers	1450'	Queen	1690'
Penrose	1850'	Grayburg	2075'
Premier	2360'	San Andres	2380'
Lovington	2490'		

3. Estimated depths to water, oil or gas:

Water: 300'

Oil or Gas: 1200' - 3500'

4. Proposed casing program:

<u>Size</u>	<u>Interval</u>	<u>Weight</u>	<u>Grade</u>	<u>Joint</u>	<u>New or Used</u>
13 3/8"	0 - 350'	48#	J-55	ST&C	New
5 1/2"	0 - 3600'	15.5#	J-55	ST&C	New

5. Pressure Control Equipment: The blowout preventer will be a double ram type preventer. A sketch is attached.

6. Mud Program:

0 - 350': Native mud

350' - 3600': Native fluid adding caustic soda for pH8+. Sweep hole with paper for fill. For better samples add salt gel as needed to increase viscosity for sample mud. Mud up to 36 viscosity by total depth for open hole logs.

7. Auxiliary Equipment: A kelly cock will be installed on the rig floor while drilling operations are in progress.

8. Testing, Logging and Coring Programs: Possible drillstem tests and/or coring is not planned.

Logging: Compensated Neutron - Formation Density - Gamma Ray - Caliper
Dual Laterolog - RXO

9. No abnormal pressures or temperature zones are anticipated.

10. Anticipated starting date: Commence drilling operations December 1, 1985.

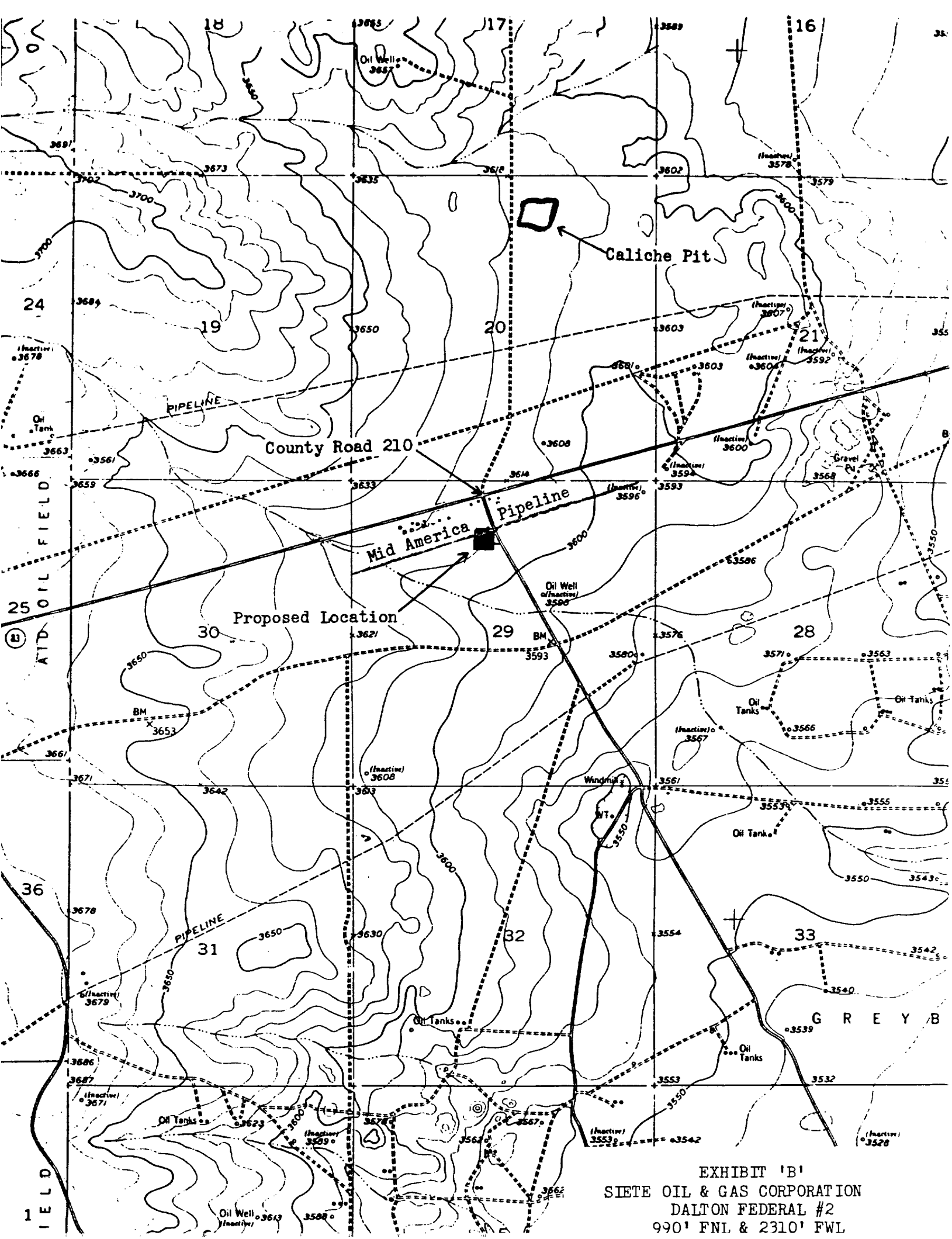
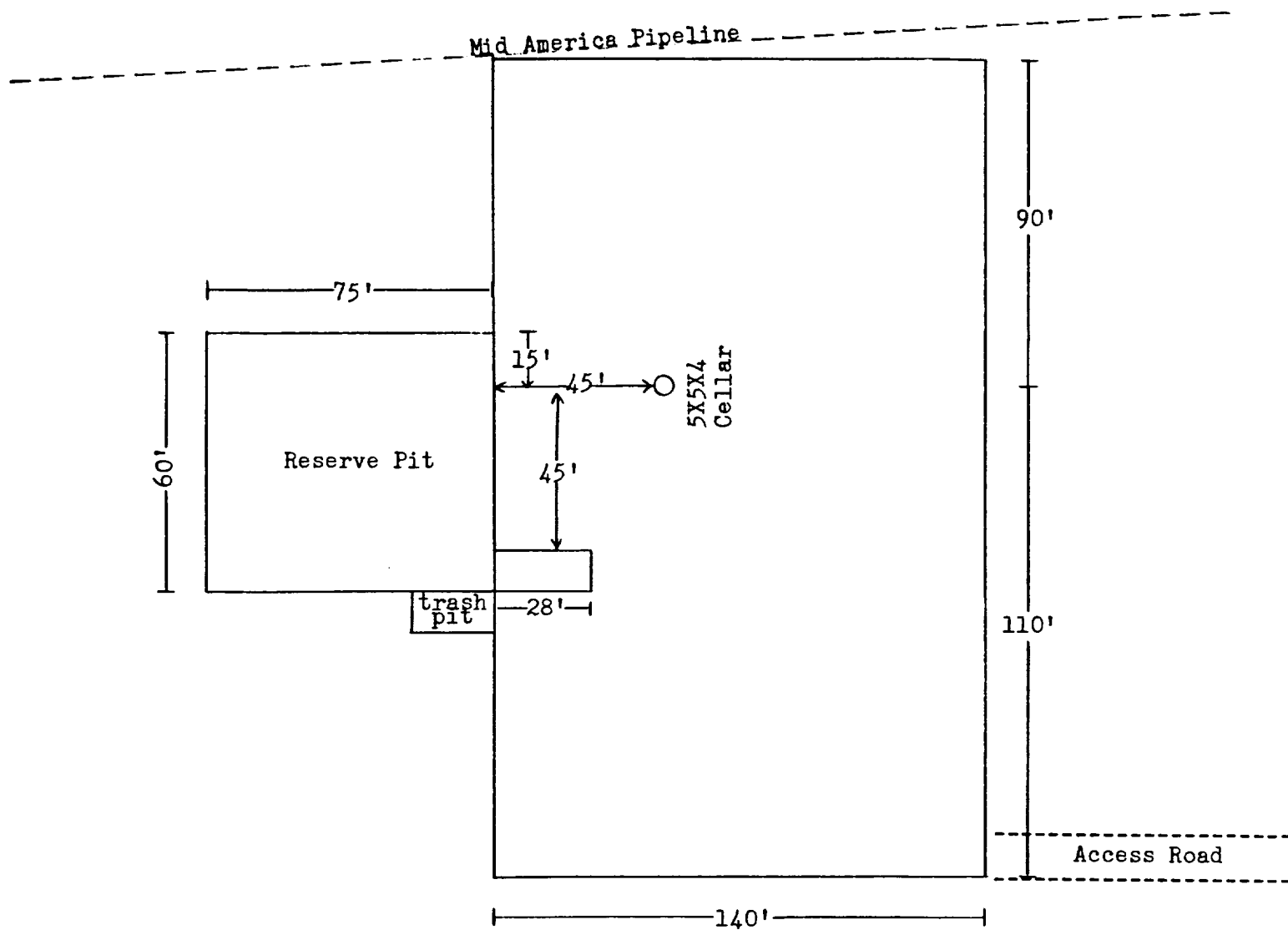


EXHIBIT 'B'
SIETE OIL & GAS CORPORATION
DALTON FEDERAL #2
990' FNL & 2310' FWL

↑
N



I&M Drilling Rig No. 1

Note: V-Door to the North
Pits to West

EXHIBIT 'D'
SIETE OIL & GAS CORPORATION
DALTON FEDERAL #2
990' FNL & 2310' FWL