

APPLICATION FOR PERMIT TO DRILL, DEEPEN, OR PLUG BACK

1a. TYPE OF WORK
 DRILL DEEPEN PLUG BACK

b. TYPE OF WELL
 OIL WELL GAS WELL OTHER

SINGLE ZONE MULTIPLE ZONE

2. NAME OF OPERATOR
 J.C. WILLIAMSON ✓

3. ADDRESS OF OPERATOR
 P.O. BOX 16 MIDLAND, TEXAS 79702

4. LOCATION OF WELL (Report location clearly and in accordance with any State requirements*)
 At surface 660' FNL & 1980' FEL
 At proposed prod. zone 2130' FEL
 660' FNL & 1980' FEL

14. DISTANCE IN MILES AND DIRECTION FROM NEAREST TOWN OR POST OFFICE
 34 miles SE of Carlsbad, New Mexico

15. DISTANCE FROM PROPOSED* LOCATION TO NEAREST PROPERTY OR LEASE LINE, FT. (Also to nearest drlg. unit line, if any)
 660'

18. DISTANCE FROM PROPOSED LOCATION* TO NEAREST WELL, DRILLING, COMPLETED, OR APPLIED FOR, ON THIS LEASE, FT.
 1320'

16. NO. OF ACRES IN INTEREST
 640

17. NO. OF ACRES ASSIGNED TO THIS WELL
 40

19. PROPOSED DEPTH
 6850'

20. ROTARY OR CABLE TOOLS
 Rotary

21. ELEVATIONS (Show whether DF, BT, GR, etc.)
 3090.6 GR

22. APPROX. DATE WORK WILL START*
 Upon Approval

RECEIVED BY
 FEB 01 1986
 O. C. D.
 ARTESIA OFFICE

5. LEASE DESIGNATION AND SERIAL NO.
 NM-0480904-B

6. IF INDIAN, ALLOTTEE OR TRIBE NAME

7. UNIT AGREEMENT NAME

8. FARM OR LEASE NAME
 ROSS DRAW UNIT

9. WELL NO.
 21

10. FIELD AND POOL, OR WILDCAT
 ROSS DRAW DELAWARE

11. SEC., T., R., M., OR BLK. AND SURVEY OR AREA
 Sec. 22, T-26-S, R-30-E

12. COUNTY OR PARISH
 EDDY

13. STATE
 NEW MEXICO

PROPOSED CASING AND CEMENTING PROGRAM

SIZE OF HOLE	SIZE OF CASING	WEIGHT PER FOOT	SETTING DEPTH	QUANTITY OF CEMENT
17-1/2"	13-3/8"	54.5#	625'	sufficient to circulate
11"	8-5/8"	24# & 32#	3300'	250 sx
7-7/8"	5-1/2"	15.5#	6850'	1000 sx in 2 stages

Producing zones will be perforated and stimulated as necessary.

Posted API
 IDI- NL
 2-7-86

IN ABOVE SPACE DESCRIBE PROPOSED PROGRAM: If proposal is to deepen or plug back, give data on present productive zone and proposed new productive zone. If proposal is to drill or deepen directionally, give pertinent data on subsurface locations and measured and true vertical depths. Give blowout preventer program, if any.

24. SIGNED [Signature] TITLE Production DATE October 24, 1985

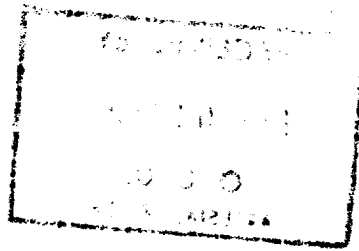
(This space for Federal or State office use)

PERMIT NO. _____ APPROVAL DATE _____

APPROVED BY _____ TITLE _____ DATE 1-31-86

APPROVAL SUBJECT TO GENERAL REQUIREMENTS AND SPECIAL STIPULATIONS

*See Instructions On Reverse Side



MEXICO OIL CONSERVATION COMMISSION
WELL LOCATION AND ACREAGE DEDICATION PLAT

Form C-102
Supersedes C-128
Effective 1-1-65

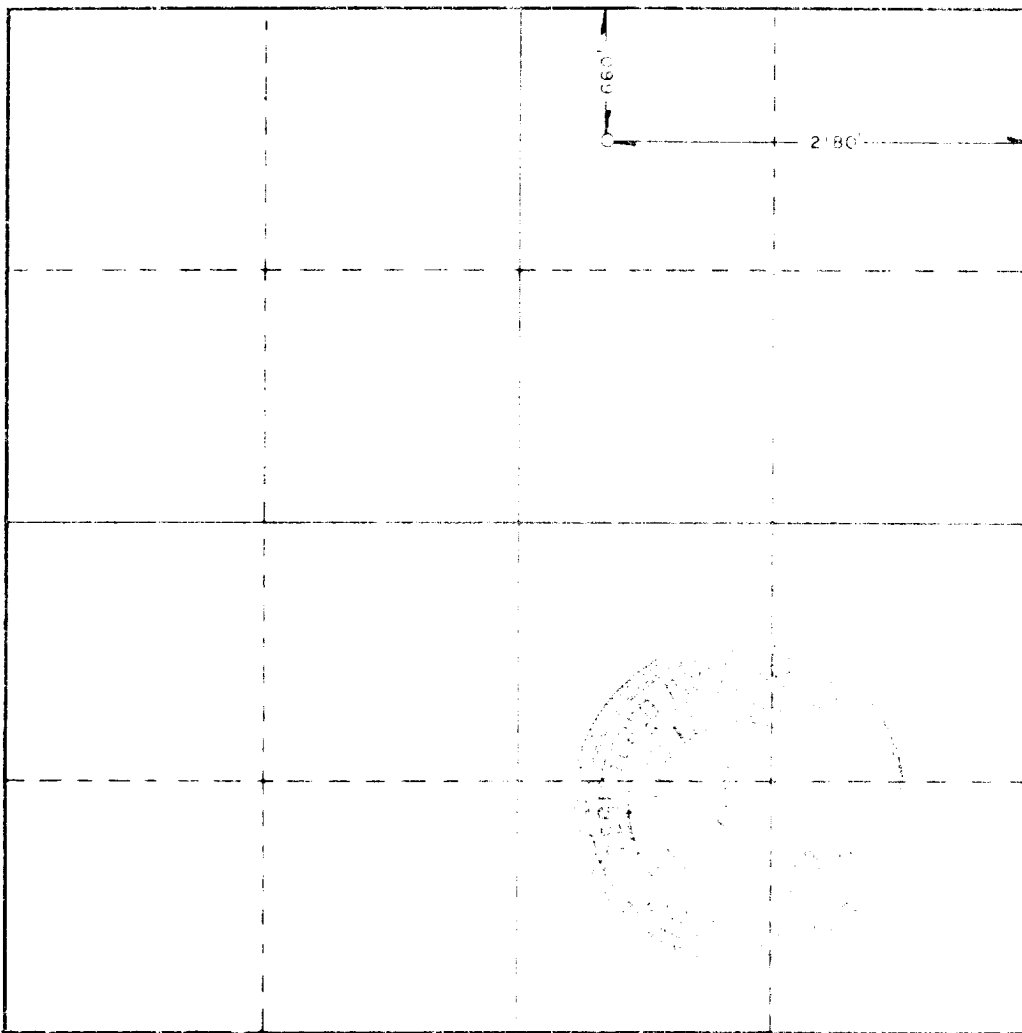
All distances must be from the outer boundaries of the Section

Owner J. C. WILLIAMSON		Lease ROSS DRAW UNIT			Well No. 21
Section 21	Township 20 SOUTH	Range 10 EAST	County EDDY		
Actual Surface Location of Well					
660 feet from the NORTH		Line and		2180 feet from the EAST	
Ground Level Elev. 1087.3'	Producing Formation Delaware	Lease Ross Draw Delaware		Estimated Acreage 40	

- Outline the acreage dedicated to the subject well by colored pencil or hachure marks on the plat below.
- If more than one lease is dedicated to each and identify the ownership thereof (both as to working interest and royalty).
- If more than one lease of different ownership is dedicated to the well, have the interests of all owners been consolidated by communitization, unitization, force-pooling, or otherwise?
 - Yes No
 - If answer is "no," list the owners and tract descriptions which have actually been consolidated (Use reverse side of this form if necessary.)

RECEIVED BY
FEB 01 1986
O. C. D.
ARTESIA, OFFICE

No allowable will be assigned to the well until all interests have been consolidated (by communitization, unitization, forced-pooling, or otherwise) or until a non-standard unit, eliminating such interests, has been approved by the Commission.



CERTIFICATION

I hereby certify that the information contained herein is true and complete to the best of my knowledge and belief.

Owner
J. C. WILLIAMSON

Date
October 24, 1985

I hereby certify that the well location shown on this plat was plotted from field notes of actual surveys made by me or under my supervision, and that the same is true and correct to the best of my knowledge and belief.

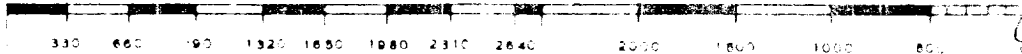
REGISTERED JANUARY 18, 1985

Date Registered
OCTOBER 24, 1985

Registered Professional Engineer and Professional Surveyor

John W. West

Certificate No. **JOHN W. WEST, 676**
RONALD J. EIDSON, 3239



NO. 1000000
1000000
1000000
1000000

NEW MEXICO OIL CONSERVATION COMMISSION
WELL LOCATION AND ACREAGE DEDICATION PLAT

Form 7-77
Supersedes O-224
Effective 1-1-77

All distances must be from the outer boundaries of the Section

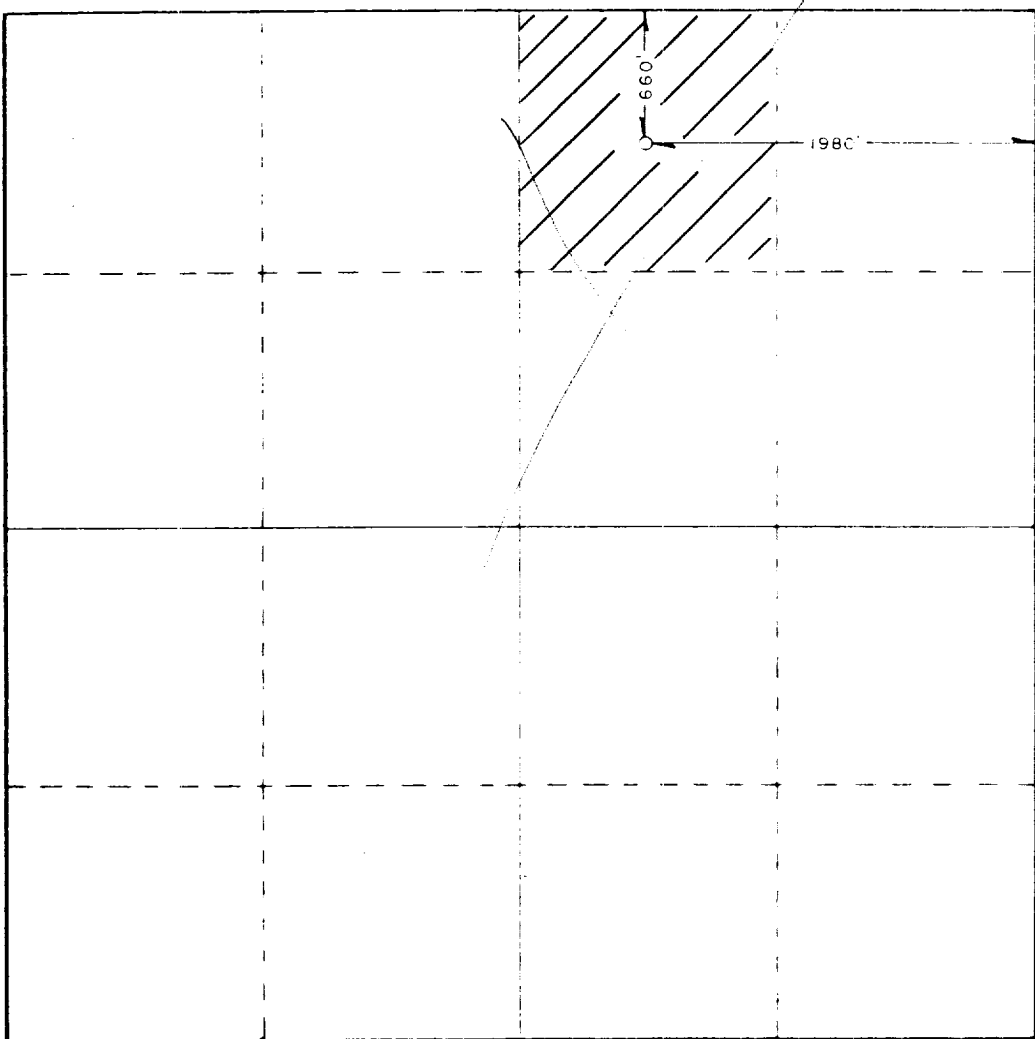
Owner: J. C. WILLIAMSON		Well No: 1980		Acres: 40	
Section: 12	Township: 37 NORTH	Range: 18 EAST	County: DEWEE	State: DELAWARE	
Producing Formation: DELAWARE			Estimated Acreage: 40		

- Outline the acreage dedicated to the subject well by colored pencil or hachure marks on the plat below.
- If more than one lease is dedicated to the well, outline each and identify the ownership thereof (both as to working interest and royalty)
N/A
- If more than one lease of different ownership is dedicated to the well, have the interests of all owners been consolidated by communitization, unitization, force-pooling, etc?

Yes No If answer is "yes," type of consolidation _____

If answer is "no," list the owners and tract descriptions which have actually been consolidated. Use reverse side of this form if necessary. N/A

No allowable will be assigned to the well until all interests have been consolidated (by communitization, unitization, forced-pooling, or otherwise) or until a non-standard unit, eliminating such interests, has been approved by the Commission.



CERTIFICATION

I hereby certify that the information contained herein is true and complete to the best of my knowledge and belief.

Jan Pfäster

Jan Pfäster

Production

J.C. WILLIAMSON

OCTOBER 24, 1985

I hereby certify that the well location shown on this plat was plotted from field notes of actual surveys made by me or under my supervision and that the same is true and correct to the best of my knowledge and belief.

Date Surveyed: OCTOBER 24, 1985

Registered Professional Engineer and/or Land Surveyor

John W. West

Certificate No. JOHN W. WEST, 676
RONALD J. EIDSON, 3239

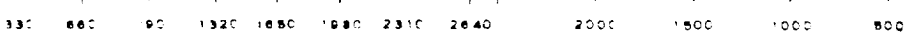
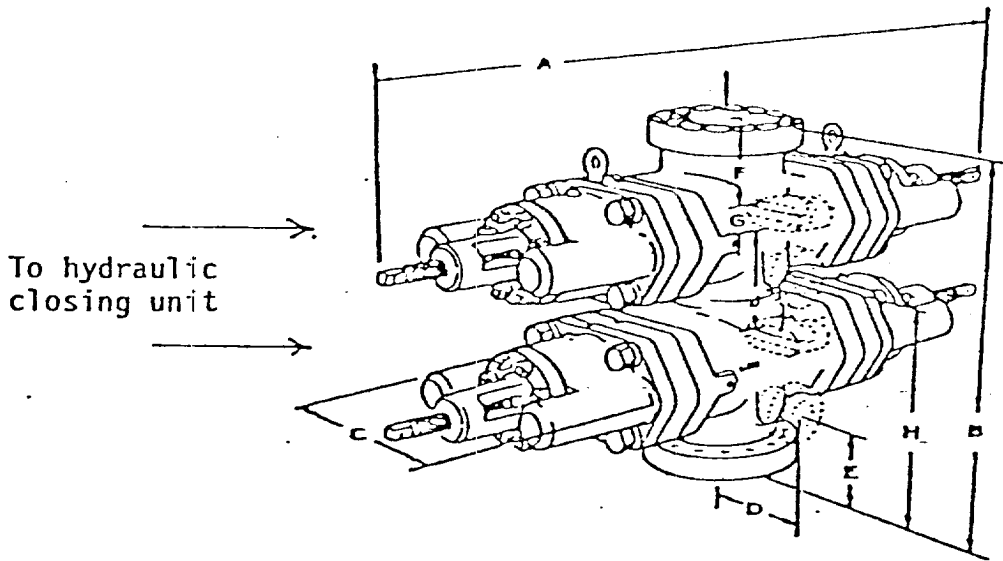


EXHIBIT "E"

BOP Diagram

After 13-3/8" surface casing has been set and cement circulated to the surface, an 11" double ram BOP, as shown below will be put on the hole. This blowout preventer will be connected to a hydraulically controlled closing unit. The pressure rating on this BOP is 3000#, and will have blank and 4-1/2" pipe rams.



J.C. Williamson
Ross Draw Unit # 21
660' FNL & 1980' FEL
Sec. 22 T-26-S R-30-E
Eddy County, New Mexico

SUPPLEMENTAL DRILLING DATA

J.C. WILLIAMSON
WELL ROSS DRAW UNIT #21

1. SURFACE FORMATION: Quaternary

2. ESTIMATED TOPS OF GEOLOGIC MARKERS:

Impervious Dewey Lake	300'
Rustler	600'
Salada	1310'
Castile	1550'
Delaware Lime	3430'
Bone Springs	7300'

3. ANTICIPATED POSSIBLE HYDROCARBON BEARING ZONES:

Delaware sand series 3450'-6850'

4. PROPOSED CASING AND CEMENTING PROGRAM:

Casing program is shown on Form 9-331 C.

Hole for surface casing will be drilled to a depth below fresh water zones. 13-3/8" surface casing will be run to 625 feet, below all fresh water zones and will be cemented to the surface with 650 sacks of Class "C" cement. Cement to circulate.

8-5/8" casing will be run and cemented at 3300 feet, prior to entering Delaware section and will be cemented with 250 sacks of Class "C" cement at 3300 feet, tying same back into salt section.

5-1/2" casing will be run to total depth and will be cemented with approximately 1000 sacks of Class "C" 50-50 poz.

5. PRESSURE CONTROL EQUIPMENT:

Pressure control equipment will consist of a 3000# double ram hydraulically controlled blow out preventer and a 3000# choke manifold.

6. CIRCULATING MEDIUM:

The circulating medium will be fresh water down to 625 feet and brine water in the rest of the hole, once the water saturates itself naturally with salt.

7. AUXILARY EQUIPMENT:

Drill string safety valves will be maintained on the rig floor while drilling operations are in progress.

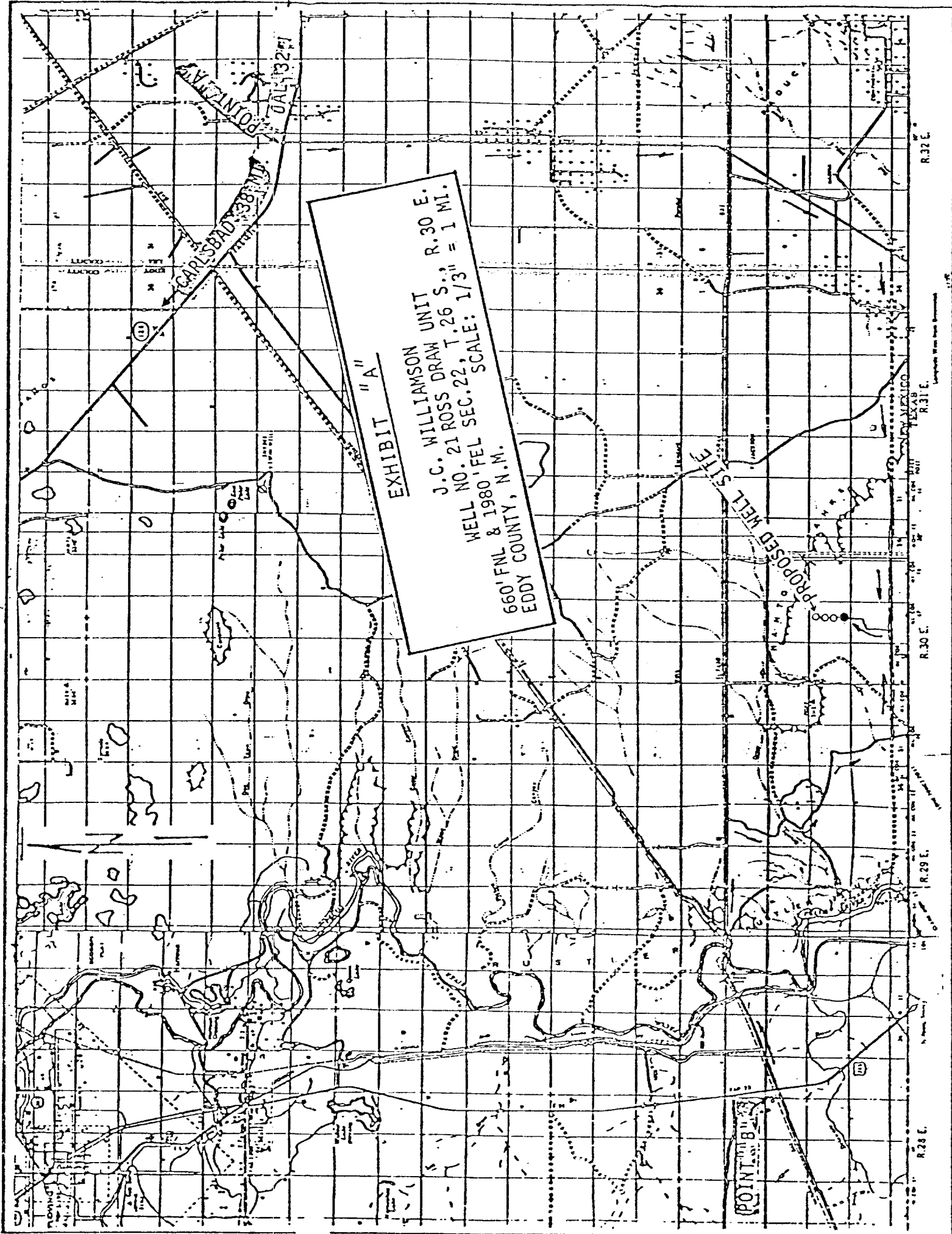


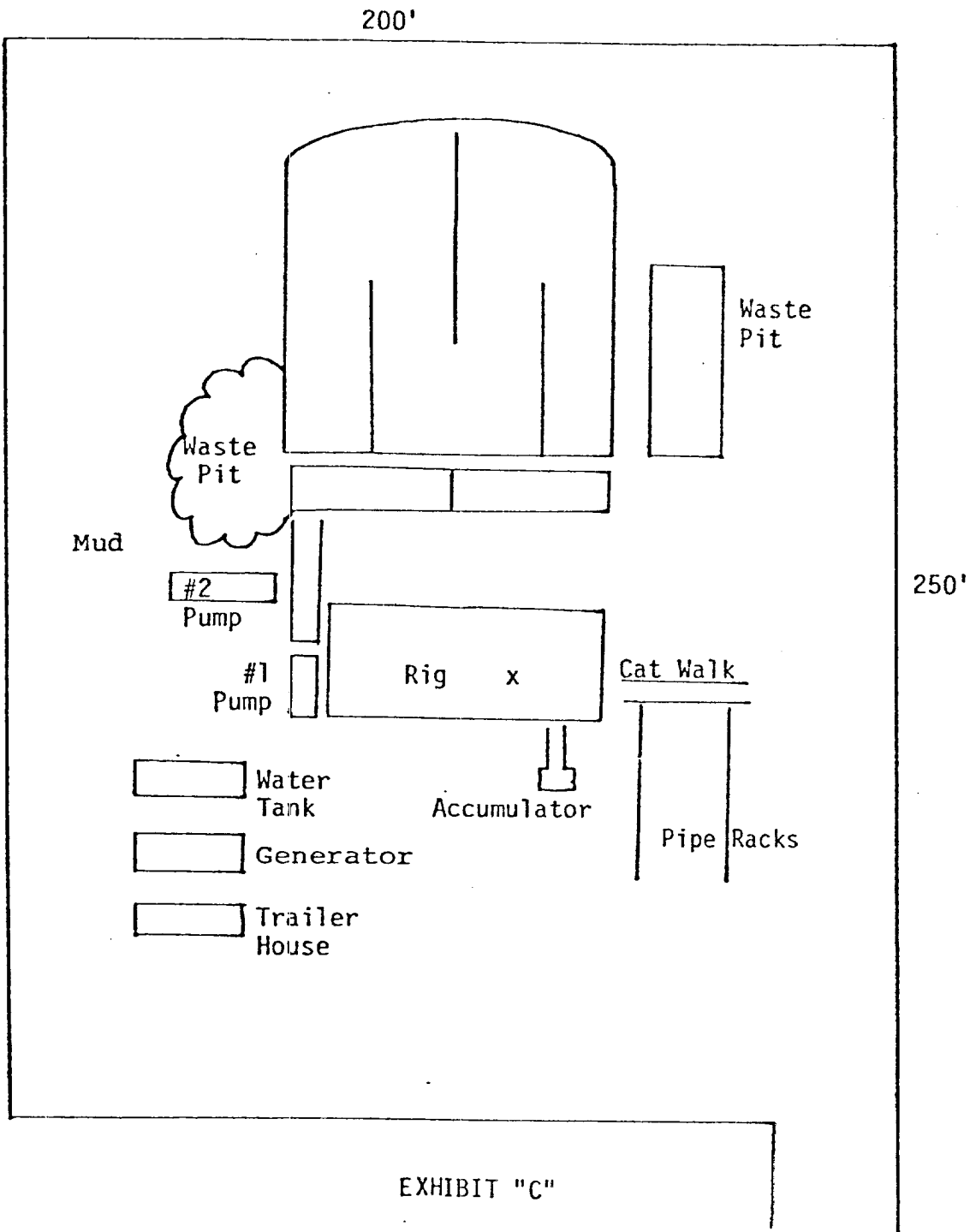
EXHIBIT "A"

J.C. WILLIAMSON UNIT R.30 E.
WELL NO. 21 ROSS DRAW T.26 S. = 1 MI.
660' FNL & 1980' FEL SEC. 22, T.26 S., R.30 E.
EDDY COUNTY, N.M.

POINT ON B...

R.28 E. R.29 E. R.30 E. R.31 E. R.32 E.

EDDY COUNTY, N.M.



J.C. WILLIAMSON
 ROSS DRAW UNIT # 21
 660' FNL & 1980' F L
 Section 22, T-26-S, R-30-E
 Eddy County, New Mexico