

UNITED STATES
DEPARTMENT OF THE INTERIOR
BUREAU OF LAND MANAGEMENT

APPLICATION FOR PERMIT TO DRILL, DEEPEN, OR PLUG BACK

1a. TYPE OF WORK

DRILL ☒

DEEPEN ☐

PLUG BACK ☐

b. TYPE OF WELL

OIL
WELL ☒

GAS
WELL ☐

OTHER

SINGLE
ZONE ☐

MULTIPLE
ZONE ☐

2. NAME OF OPERATOR

J.C. Williamson

RECEIVED

3. ADDRESS OF OPERATOR

P.O. Box 16 Midland, Texas 79702

4. LOCATION OF WELL (Report location clearly and in accordance with any State requirements.)

At surface

1650' FNL & 330' FEL

At proposed prod. zone

same

14. DISTANCE IN MILES AND DIRECTION FROM NEAREST TOWN OR POST OFFICE*

14 miles NE of Carlsbad

15. DISTANCE FROM PROPOSED*

LOCATION TO NEAREST
PROPERTY OR LEASE LINE, FT.
(Also to nearest drlg. unit line, if any)

330'

16. NO. OF ACRES IN LEASE

960

17. NO. OF ACRES ASSIGNED
TO THIS WELL

40

18. DISTANCE FROM PROPOSED LOCATION*

TO NEAREST WELL, DRILLING, COMPLETED,
OR APPLIED FOR, ON THIS LEASE, FT.

900'

19. PROPOSED DEPTH

6200'

20. ROTARY OR CABLE TOOLS

Rotary

21. ELEVATIONS (Show whether DF, RT, GR, etc.)

3312.2' GR

22. APPROX. DATE WORK WILL START*

July 1, 1989

23.

PROPOSED CASING AND CEMENTING PROGRAM

| SIZE OF HOLE | SIZE OF CASING | WEIGHT PER FOOT | SETTING DEPTH | QUANTITY OF CEMENT |
|--------------|----------------|-----------------|---------------|---------------------------------|
| 20" | 16" | 65# | 250' | 250 sx circulate |
| 14-3/4" | 11-3/4" | 47# | 1200' | 600 sx circulate |
| 11" | 8-5/8" | 15.5# | 3100' | 1000 sx tie back to last string |
| 7-7/8" | 5-1/2" | | 6200' | 600' above pay |

APPROVAL SUBJECT TO
CERTAIN REQUIREMENTS AND
SPECIFIC CALCULATIONS
ATTACHED

POST ID-1
APR 16 1989

RECEIVED
MAY 3 10 42 AM '89

IN ABOVE SPACE DESCRIBE PROPOSED PROGRAM: If proposal is to deepen or plug back, give data on present productive zone and proposed new productive zone. If proposal is to drill or deepen directionally, give pertinent data on subsurface locations and measured and true vertical depths. Give blowout preventer program, if any.

24.

SIGNED

John D. Fisher

TITLE

Production

DATE

05/02/89

(This space for Federal or State office use)

PERMIT NO.

APPROVAL DATE

APPROVED BY

TITLE

CARLSBAD REGIONAL OFFICE

DATE

6-5-89

CONDITIONS OF APPROVAL, IF ANY:

OIL CONSERVATION DIVISION

DISTRICT
P.O. Box 1980, Hobbs, NM 88240

P.O. Box 2088
Santa Fe, New Mexico 87504-2088

DISTRICT II
P.O. Drawer DD, Artesia, NM 88210

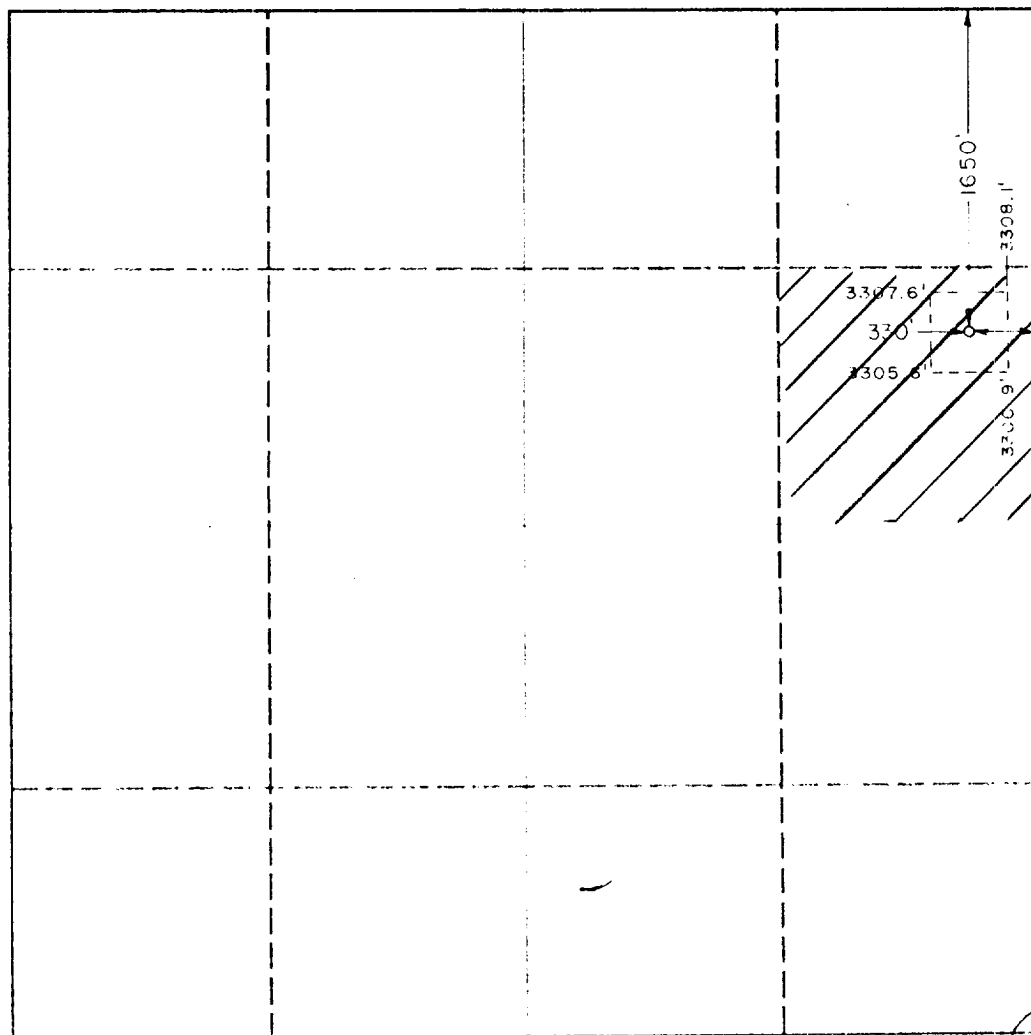
DISTRICT III
1000 Rio Brazos Rd., Aztec, NM 87410

WELL LOCATION AND ACREAGE DEDICATION PLAT

All Distances must be from the outer boundaries of the section

| | | | | |
|----------------------------------|---------------------------------|---------------------------------|--------------------------------|----------------|
| Operator J.C. Williamson | | Lease Canter <i>Jed.</i> | | Well No. 4 |
| Unit Letter H | Section 10 | Township 20 South | Range 29 East NMPM | County Eddy |
| Actual Footage Location of Well: | | | | |
| 330 feet from the east line and | | 1650 feet from the north line | | |
| Ground level Elev. 3312.2' | Producing Formation Delaware | Pool Wildcat <i>Delaware</i> | Dedicated Acreage: 40 Acres | |

1. Outline the acreage dedicated to the subject well by colored pencil or hatchure marks on the plat below.
2. If more than one lease is dedicated to the well, outline each and identify the ownership thereof (both as to working interest and royalty).
3. If more than one lease of different ownership is dedicated to the well, have the interest of all owners been consolidated by communitization, unitization, force-pooling, etc.?
- ☐ Yes ☐ No If answer is "yes" type of consolidation N/A
- If answer is "no" list the owners and tract descriptions which have actually been consolidated. (Use reverse side of this form if necessary).
- No allowable will be assigned to the well until all interests have been consolidated (by communitization, unitization, forced pooling, or otherwise) or until a non-standard unit, eliminating such interest, has been approved by the Division.



OPERATOR CERTIFICATION

I hereby certify that the information contained herein is true and complete to the best of my knowledge and belief.

Signature *Jan Pfister*
Printed Name **Jan Pfister**
Position

Production
Company
J.C. Williamson
Date
05/02/89

SURVEYOR CERTIFICATION

I hereby certify that the well location shown on this plat were plotted from field notes of actual surveys made by me or under my supervision and that the same is true and correct to the best of my knowledge and belief.

Date Surveyed
April 13, 1989

Signature of Professional Surveyor
Professional Surveyor
REGISTERED LAND SURVEYOR ENGINEER
NO. 1000
JOHN W. WERT
6/8
32

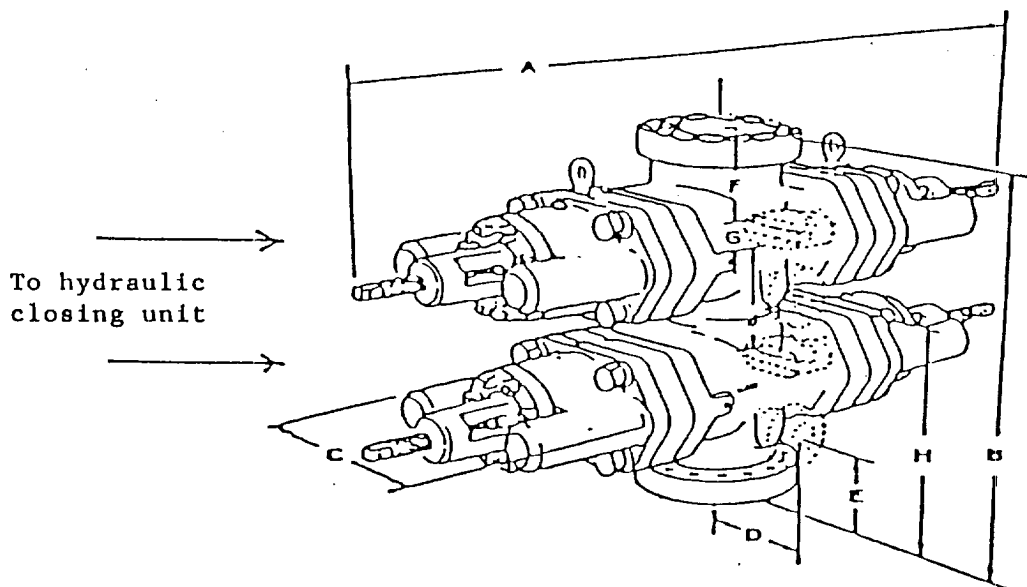
EXHIBIT "E"

BOP Diagram

A flanger type Bell lead will be used on this well. After the 11-3/4" casing has been set and cemented, an 11" double ram BOP will be put on and kept in service for the life of this well.

After 8-5/8" intermediate casing has been set and cement placed around this pipe, a bolted flange type well head will be put on this well.

And then an 11" double ram BOP, as shown below will be put on the hole. This blowout preventer will be connected to a hydraulically controlled closing unit. The pressure rating on this BOP is 3000#, and will have blank and 5-1/2" pipe.



J.C. Williamson
Canter Federal #4
1650' FNL & 330' FEL
Sec. 10, T-20-S, R-29-E
Eddy County, New Mexico

SUPPLEMENTAL DRILLING DATA

J. C. WILLIAMSON
CANTER FEDERAL #4

1. SURFACE FORMATION: Quaternary Alluvium

2. ESTIMATED TOPS OF GEOLOGIC MARKERS:

| | |
|---------------------------|-------|
| Rustler Anhydrite | 250' |
| Terrell | 1150' |
| Yates | 1400' |
| Goat Seep Reef | 1650' |
| T/Delaware Sand series | 3350' |
| T/Lower Delaware | 5600' |
| T/Bone Springs Lime | 5950' |
| T/First Bone Springs sand | 6250' |

3. ANTICIPATED POSSIBLE WATER AND HYDROCARBON BEARING ZONES:

| | |
|----------------|---------------|
| Fresh Water | above 200' |
| Delaware (oil) | 3350' - 5950' |
| Bone Springs | 5950' - 6500' |

4. PROPOSED CASING AND CEMENTING PROGRAM:

Casing program is shown on Form 9-331 C.

A 20" hole for surface casing will be drilled to a depth below fresh water zones to a depth of 250'. 16" surface casing will be run to 250', below all fresh water zones and will be cemented to the surface with 250 sacks of Class "C" cement or sufficient cement to circulate this well to the surface.

A 14-3/4" hole will be drilled to 1200', through the salt section, with 11-3/4" casing to be set in this hole and cement circulated to the surface using 600 sx more or less.

8-5/8" casing will be run and cemented at 3100 feet, prior to entering delaware section and will be cemented with 500 sacks of Class "C" cement, or sufficient cement to bring cement back up to tie back to 11-3/4" casing.

5-1/2" casing will be run to total depth and will be cemented at a total depth if significant shows are encountered in the Bone Springs formation, or in the Delaware formation if significant shows are encountered in the Delaware sand series.

5. PRESSURE CONTROL EQUIPMENT:

Pressure control equipment will consist of a 3000# double ram hydraulically controled blow out preventer and a 3000# choke manifold.

6. CIRCULATING MEDIUM:

The circulating medium will be fresh water to 250' and produced salt water down to 1200 feet and fresh water down to 3100' if possible, and brine water and produced brine water will be used below 3100'.

7. AUXILARY EQUIPMENT:

Not Applicable.

8. TESTING, LOGGING AND CORING PROGRAM:

Formation testing will be made by conventional drill stem test; however none are anticipated.

It is planned that a compensated neutron-density gamma ray and gamma ray dual laterolog will be run when total depth is reached, with a backup computer analysis utilizing these logs.

No coring is planned.

9. ABNORMAL PRESSURES, TEMPERATURES OR HYDROGEN SULFIDE GAS:

None anticipated.

10. ANTICIPATED STARTING DATE:

It is planned that operations will commence on July 1, 1989, or as soon as the application is approved.

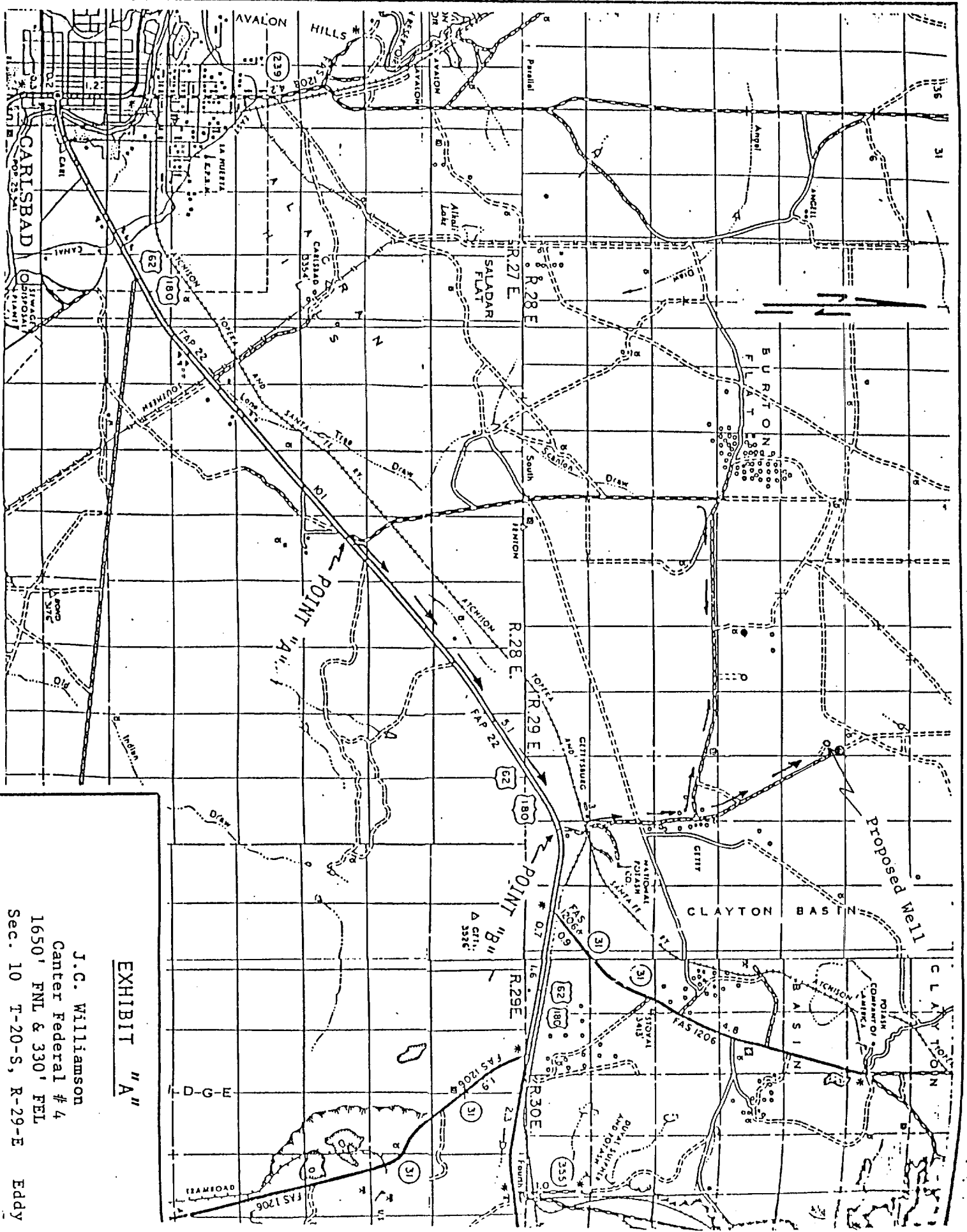


EXHIBIT "A"

J.C. Williamson
Canter Federal # 4
1650' FNL & 330' FEL
Sec. 10 T-20-S, R-29-E Eddy Co.

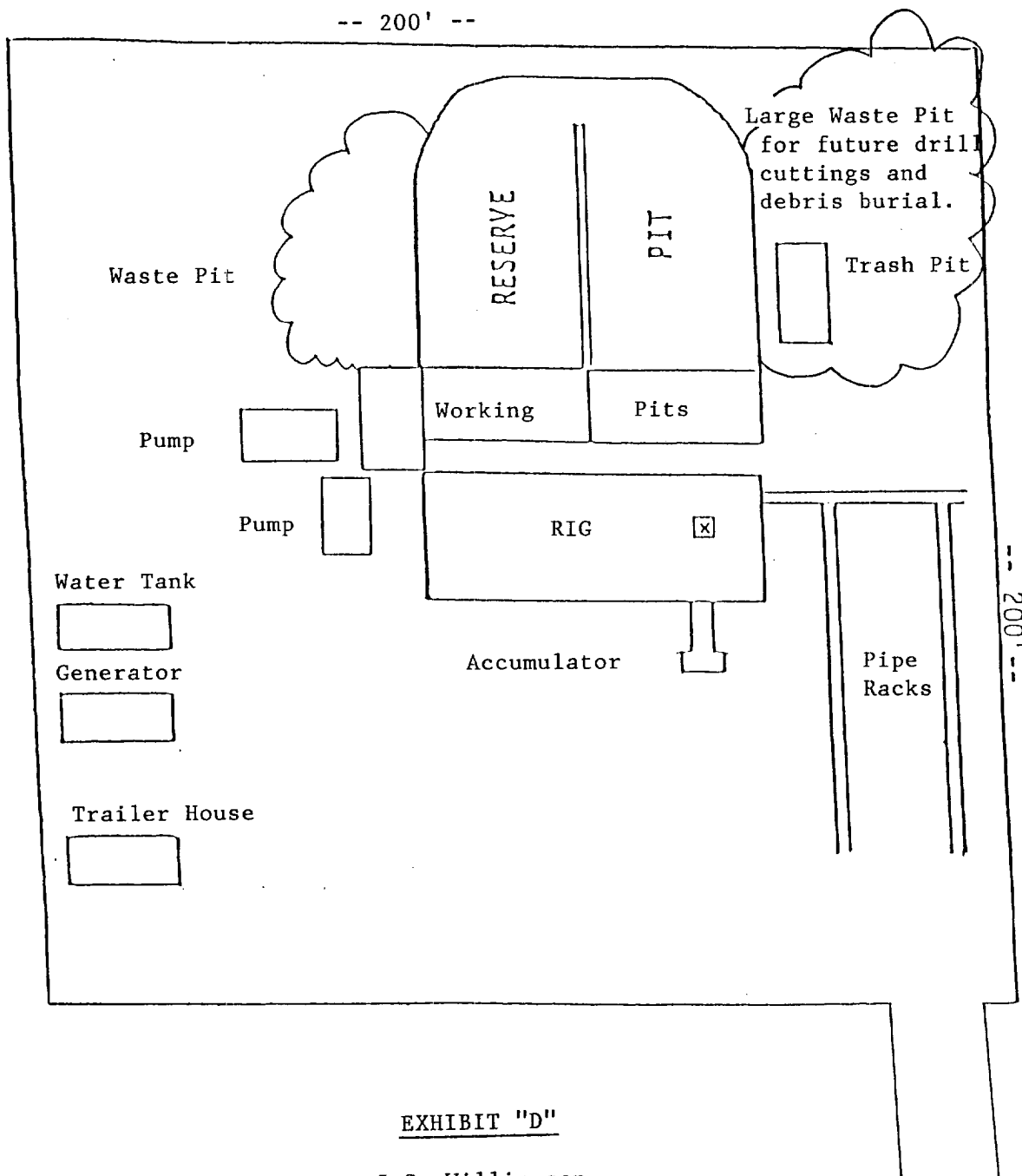


EXHIBIT "D"

J.C. Williamson
Canter Federal #4
Sec. 10-20S-29E
Eddy Co., NM