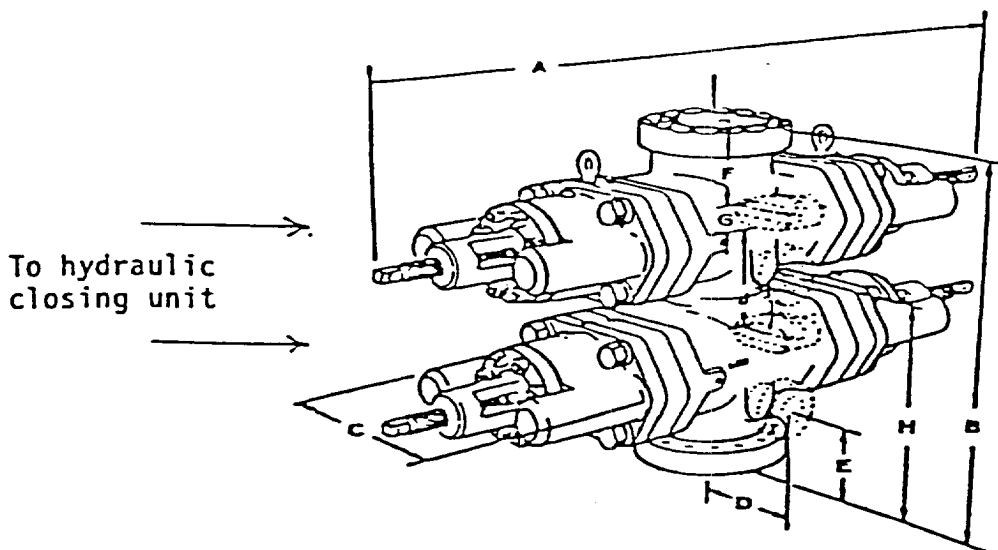


## EXHIBIT "E"

### BOP Diagram

After 8-5/8" intermediate casing has been set and cemented, an 11" double ram BOP, as shown below will be put on the hole. This blowout preventer will be connected to a hydraulically controlled closing unit. The pressure rating on this BOP is 3000# and will have blank and 4-1/2" drill pipe rams.



J.C. WILLIAMSON  
HOLLY "A" FEDERAL #7