

OIL CONSERVATION DIVISION

DISTRICT I
P.O. Box 1980, Hobbs, NM 88240

P.O. Box 2088
Santa Fe, New Mexico 87504-2088

DISTRICT II
P.O. Drawer DD, Artesia, NM 88210

DISTRICT III
1000 Rio Brazos Rd., Aztec, NM 87410

WELL LOCATION AND ACREAGE DEDICATION PLAT

All Distances must be from the outer boundaries of the section

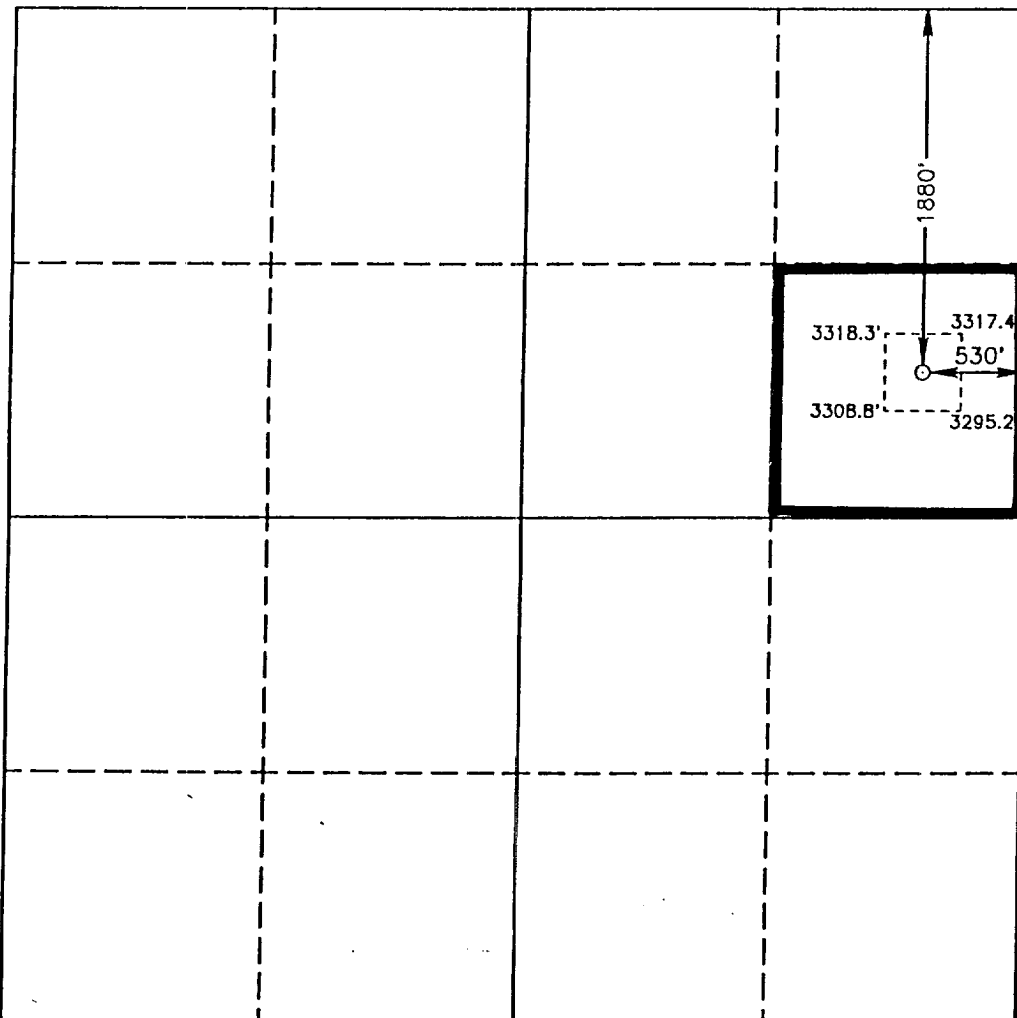
Operator COLLINS AND WARE, INC		Lease PITA FEDERAL		Well No. 1
Unit Letter H	Section 1	Township 20 SOUTH	Range 29 EAST NMPM	County EDDY
Actual Footage Location of Well:				
1880 feet from the NORTH line and		530 feet from the EAST line		
Ground Level Elev. 3315.9'	Producing Formation Delaware	Pool Undes. Parkway		Dedicated Acreage: 40 80 Acres

1. Outline the acreage dedicated to the subject well by colored pencil or hatchure marks on the plat below.
2. If more than one lease is dedicated to the well, outline each and identify the ownership thereof (both as to working interest and royalty).
3. If more than one lease of different ownership is dedicated to the well, have the interest of all owners been consolidated by communitization, unitization, force-pooling, etc.?

☐ Yes ☐ No If answer is "yes" type of consolidation

If answer is "no" list of owners and tract descriptions which have actually been consolidated. (Use reverse side of this form necessary.

No allowable will be assigned to the well unit all interests have been consolidated (by communitization, unitization, forced-pooling, otherwise) or until a non-standard unit, eliminating such interest, has been approved by the Division.



OPERATOR CERTIFICATION

I hereby certify the the information
contained herein is true and complete to the
best of my knowledge and belief.

Signature James Harris

Printed Name
G. Thane Akins

Position
Agent

Company	Collins & Ware, Inc.
---------	----------------------

Date
5/6/92

SURVEYOR CERTIFICATION

I hereby certify that the well location shown on this plat was plotted from field notes of actual surveys made by me or under my supervision, and that the same is true and correct to the best of my knowledge and belief.

Date Surveyed
APRIL 13, 1992

Signature & Seal of:
Professional Surveyor

REGISTERED LIFE SURVEYOR

No. 3239

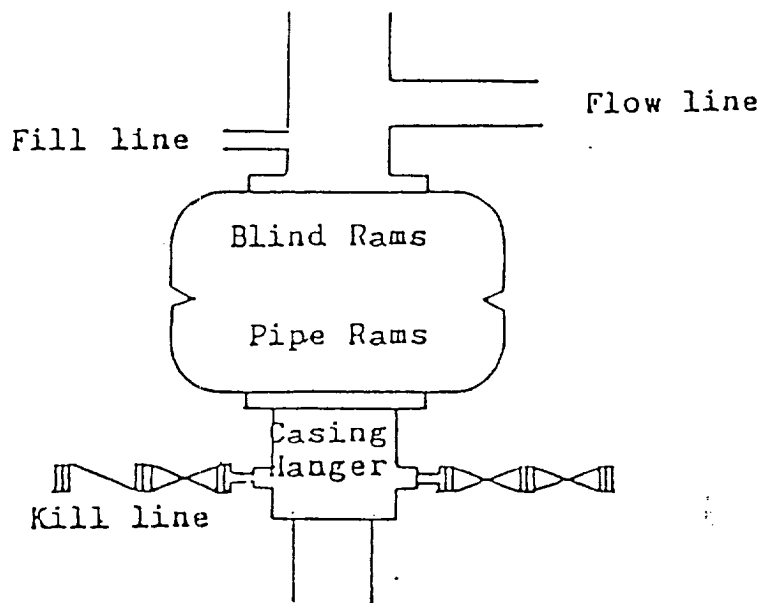
Ronald L. Edson

Certificate No. JOHN W. WEST. 676

RONALD J. EDSON. 3239

GARY L. JONES. 7871

92-11-0533



Blowout Preventer
3000 psi working pressure

EXHIBIT #1
COLLINS & WARE, INC.
PITA FEDERAL NO. 1
330' FEL & 1980' FNL
SEC. 1, T-20-S, R-29-E
Eddy County, NM