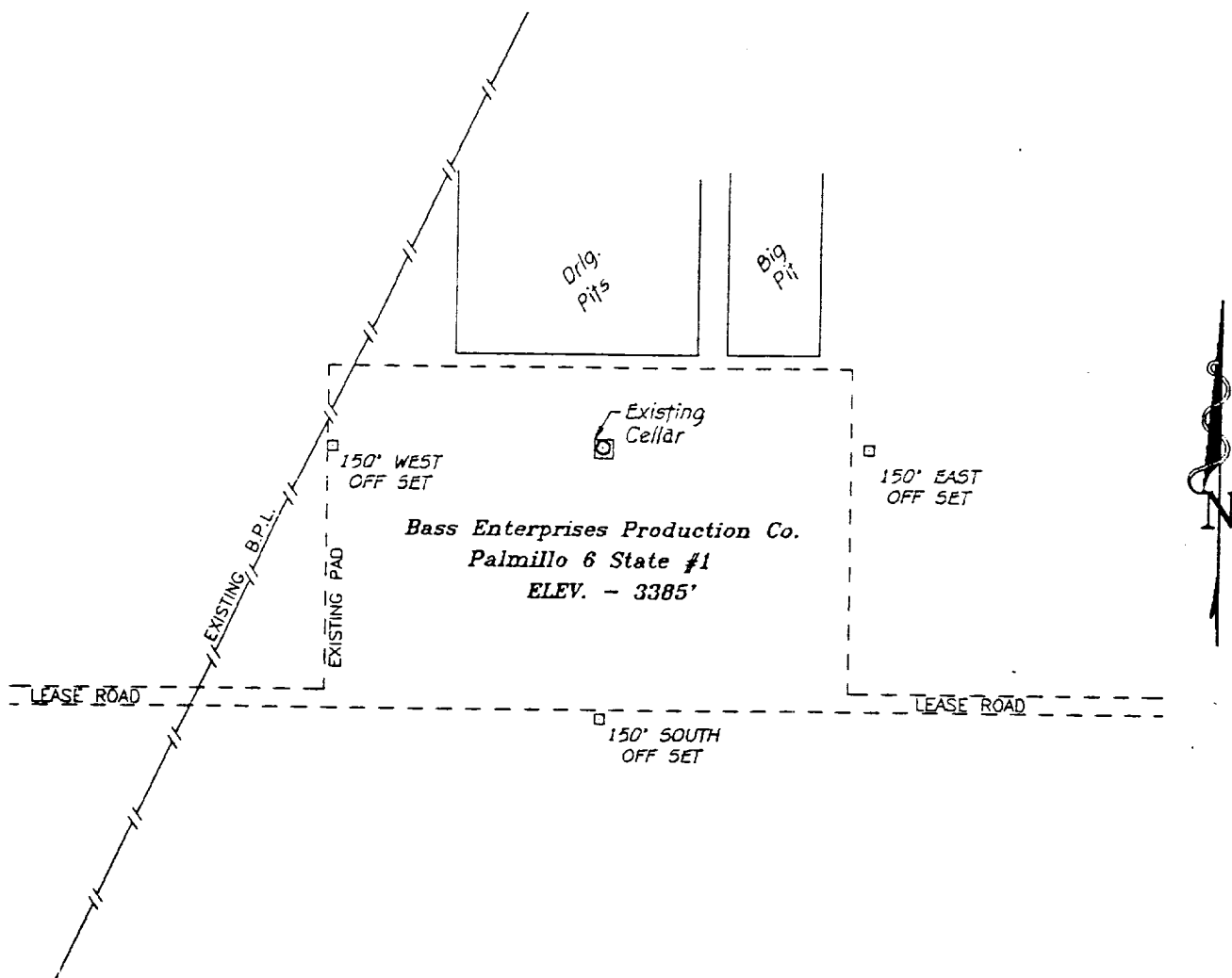


SECTION 6, TOWNSHIP 19 SOUTH, RANGE 29 EAST, N.M.P.M.,  
EDDY COUNTY, NEW MEXICO.



100 0 100 200 FEET  
SCALE: 1" = 100'

**BASS ENTERPRISES PRODUCTION CO.**

REF: Palmillo 6 State No. 1 / Well Pad Topo

THE PALMILLO 6 STATE No. 1 LOCATED 2010' FROM THE  
NORTH LINE AND 603' FROM THE WEST LINE OF  
SECTION 6, TOWNSHIP 19 SOUTH, RANGE 29 EAST,  
N.M.P.M., EDDY COUNTY, NEW MEXICO.

**ASIN SURVEYS** P.O. BOX 1786--HOBBS, NEW MEXICO

Number: 6590

Drawn By: S.C. NICHOLS

12-24-96

Disk: SCN #33 - BAS6590B.DWG

Survey Date: 12-23-96

Sheet 1 of 1 Sheets