

District I  
PO Box 1980, Hobbs, NM 88241-1980  
District II  
PO Drawer DD, Artesia, NM 88211-0  
District III  
1000 Rio Brazos Rd., Aztec, NM 87410  
District IV  
PO Box 2088, Santa Fe, NM 87504-2088

State of New Mexico  
Energy, Minerals & Natural Resources Department

Form C-101  
Revised February 10, 1994  
Instructions on back

OIL CONSERVATION DIVISION  
PO Box 2088  
Santa Fe, NM 87504-2088

Submit to Appropriate District Office  
State Lease - 6 Copies  
Fee Lease - 5 Copies

RECEIVED

☐ AMENDED REPORT

FEB 26 1997

APPLICATION FOR PERMIT TO DRILL, RE-ENTER, DEEPEN, PLUGBACK, OR ADD A ZONE

Operator Name and Address PENWELL ENERGY INC. 1100 ARCO BUILDING 600 N. MERIENFELD MIDLAND, TEXAS 79701		OIL CON. DIV. DIST. 2	* OGRID Number 147380
			* API Number 30-015-29521
* Property Code 20756	* Property Name BRIGHT STAR "31" STATE		* Well No. 1

7 Surface Location

UL or lot no.	Section	Township	Range	Lot Ida	Feet from the	North/South line	Feet from the	East/West line	County
I	31	23S	25E		1980'	SOUTH	660'	EAST	EDDY

8 Proposed Bottom Hole Location If Different From Surface

UL or lot no.	Section	Township	Range	Lot Ida	Feet from the	North/South line	Feet from the	East/West line	County
Baldridge Canyon McMorrow					71420				

" Work Type Code N	" Well Type Code G	" Cable/Rotary ROTARY	" Lease Type Code S	" Ground Level Elevation
" Multiple NO	" Proposed Depth 11,000'	" Formation MORROW	" Contractor Unknown	" Spud Date As soon as approved

21 Proposed Casing and Cement Program

Hole Size	Casing Size	Casing weight/foot	Setting Depth	Sacks of Cement	Estimated TOC
25"	20"	Conductor	40'	Redi-mix	surface
17 1/2"	13 3/8"	48	450'	500	surface
12 1/4"	9 5/8"	36	2700'	1100	surface
8 3/4"	5 1/2"	17	11,000'	750	8000'

" Describe the proposed program. If this application is to DEEPEN or PLUG BACK give the data on the present productive zone and proposed new productive zone. Describe the blowout prevention program, if any. Use additional sheets if necessary.

1. Drill 25" hole to 40'. Set 40' of 20" conductor pipe and cement to surface with Redi-mix.
2. Drill 17 1/2" hole to 450'. Run and set 450' of 13 3/8" 48# H-40 ST&C casing. Cement with 500 Sx. Class "C" cement + additives, circulate cement to surface.
3. Drill 12 1/4" hole to 2700'. Run and set 2700' of 9 5/8" 36# J-55 ST&C casing. Cement with 850 Sx. Class "C" Halco Light, tail in with 250 Sx. Class "C" + 2% CaCl, circulate cement to surface.
4. Drill 8 3/4" hole to 11,000'. Run and set 11,000' of 5 1/2" 17# N-80 LT&C casing. Cement with 500 Sx. of Class "H" Halco Light tail in with 250 Sx. Class "H" + additives estimate top of cement 8000'.

EXPIRED INT.

Posted ID-1  
4-25-97  
HL HAT

" I hereby certify that the information given above is true and complete to the best of my knowledge and belief.

Signature: Joe T. Janica

Printed name: Joe T. Janica

Title: Agent

Date:

Phone:

OIL CONSERVATION DIVISION

Approved by:

Title:

Approval Date:

Expiration Date:

Conditions of Approval: See C 103 for revised

**Abstract**

22

349:043

DISTRICT I  
P.O. Box 1980, Hobbs, NM 88240

State of New Mexico  
Energy, Minerals and Natural Resources Department

Form C-102  
Revised February 10, 1994  
Instruction on back  
Submit to Appropriate District Office  
State Lease - 4 Copies  
Fee Lease - 3 Copies

DISTRICT II  
P.O. Drawer DD, Artesia, NM 88210

OIL CONSERVATION DIVISION

DISTRICT III  
1000 Rio Brazos Rd., Aztec, NM 87410

P.O. Box 2088  
Santa Fe, New Mexico 87504-2088

☐ AMENDED REPORT

WELL LOCATION AND ACREAGE DEDICATION PLAT

API Number	Pool Code	Pool Name
		DARK CANYON WILDCAT MORROW
Property Code	Property Name	Well Number
	Bright Star "31" State	1
GRID No.	Operator Name	Elevation
147308	Penwell Energy Inc.	3843'

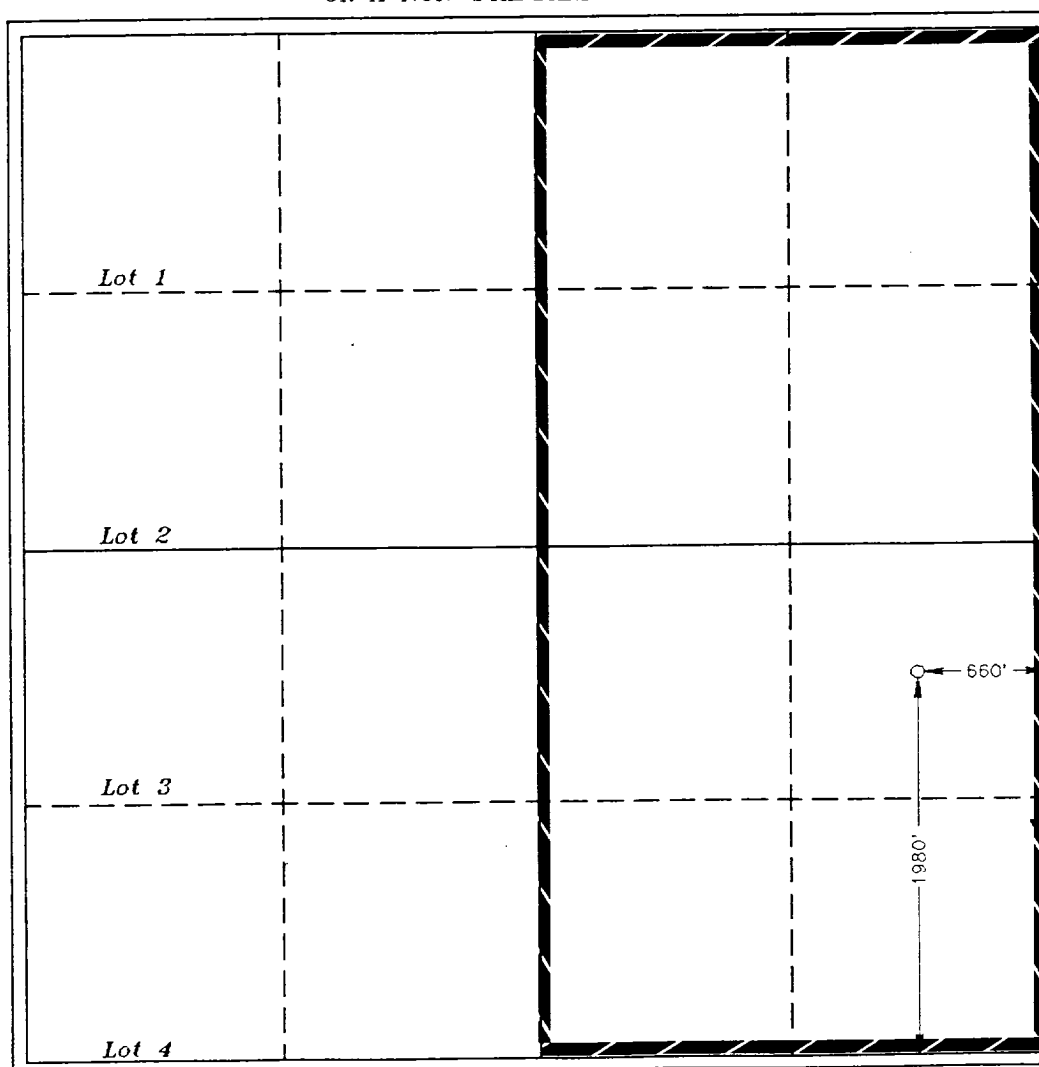
Surface Location

UL or lot No.	Section	Township	Range	Lot Idn	Feet from the	North/South line	Feet from the	East/West line	County
1	31	23 S	25 E		1980	South	660	East	Eddy

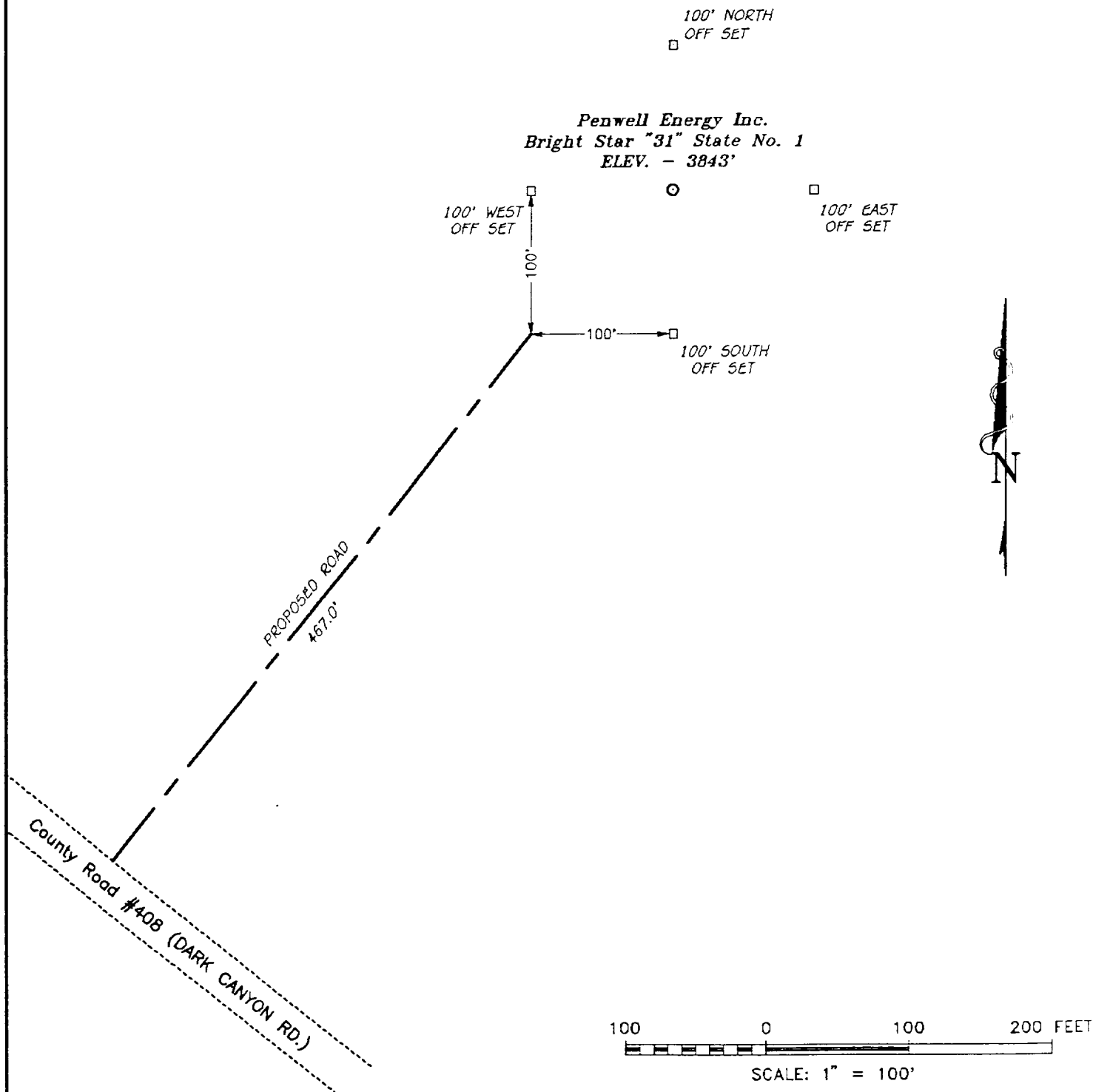
Bottom Hole Location If Different From Surface

UL or lot No.	Section	Township	Range	Lot Idn	Feet from the	North/South line	Feet from the	East/West line	County
Dedicated Acres	Joint or Infill	Consolidation Code	Order No.						
320									

NO ALLOWABLE WILL BE ASSIGNED TO THIS COMPLETION UNTIL ALL INTERESTS HAVE BEEN CONSOLIDATED  
OR A NON-STANDARD UNIT HAS BEEN APPROVED BY THE DIVISION

	<b>OPERATOR CERTIFICATION</b>		
	I hereby certify that the information contained herein is true and complete to the best of my knowledge and belief.		
	Signature <i>Joe T. Janica</i> Joe T. Janica Printed Name Agent		
	Title 02/25/97 Date		
	<b>SURVEYOR CERTIFICATION</b>		
	I hereby certify that the well location shown on this plat was plotted from field notes of actual surveys made by me or under my supervision, and that the same is true and correct to the best of my belief.		
	February 17, 1997 Date Surveyed		
	Signature & Seal of Professional Surveyor 7977 W.O. No. 7096a Certificate No. Gary L. Jones 7977		
		BASIN SURVEYS	

SECTION 31, TOW. 23 SOUTH, RANGE 25 EAST, N.M.P.M.,  
EDDY COUNTY, NEW MEXICO.



DIRECTIONS

FROM JCT. OF HIDALGO RD. & DARK CANYON RD. SOUTHWEST  
OF CARLSBAD N.M. GO WESTERLY ON DARK CANYON RD. 7.0  
MILES TO A POINT 467.0' FROM LOCATION

**BASIN SURVEYS** P.O. BOX 1786 - HOBBS, NEW MEXICO

W.O. Number: 7096

Drawn By: S.C. NICHOLS

Date: 02-21-97

Disk: SCN #34 - 7096AA.DWG

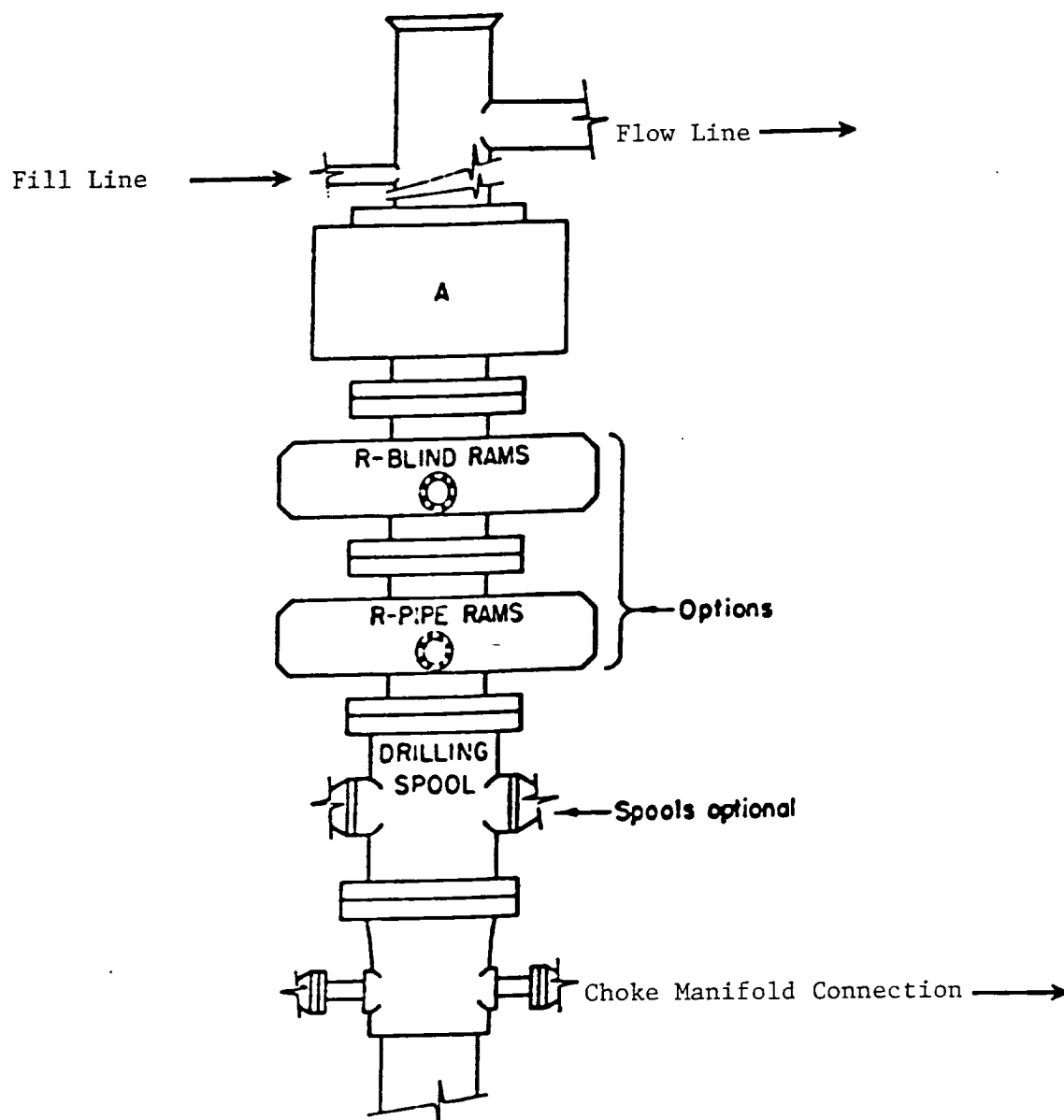
**Penwell Energy Inc.**

REF: Bright Star "31" State No. 1 / Well Pad Topo

THE BRIGHT STAR "31" STATE No. 1 LOCATED 1980' FROM  
THE SOUTH LINE AND 660' FROM THE EAST LINE OF  
SECTION 31, TOWNSHIP 23 SOUTH, RANGE 25 EAST,  
N.M.P.M., EDDY COUNTY, NEW MEXICO.

Survey Date: 02-17-97

Sheet 1 of 1 Sheets



### ARRANGEMENT SRRA

1500 Series  
5000 PSI WP