



28792-710-6E  
28792

THE LINE OF  
THE LINE OF  
THE LINE OF  
THE LINE OF

DISTRICT II  
P.O. Drawer DD, Artesia, NM 88210

DISTRICT III  
1000 Ric Brazos Rd., Aztec, NM 87410

## OIL CONSERVATION DIVISION

P.O. Box 2088  
Santa Fe, New Mexico 87504-2088

☐ AMENDED REPORT

## WELL LOCATION AND ACREAGE DEDICATION PLAT

API Number 30-015-29752	Pool Code 50382	Pool Name Poker Lake (Delaware)
Property Code	Property Name Poker Lake Unit	Well Number 131
OGRID No. 001801	Operator Name Bass Enterprises Production Company	Elevation 3509'

### Surface Location

UL or lot No.	Section	Township	Range	Lot Idn	Feet from the	North/South line	Feet from the	East/West line	County
G	20	24 S	31 E		1980	North	1650	East	Eddy

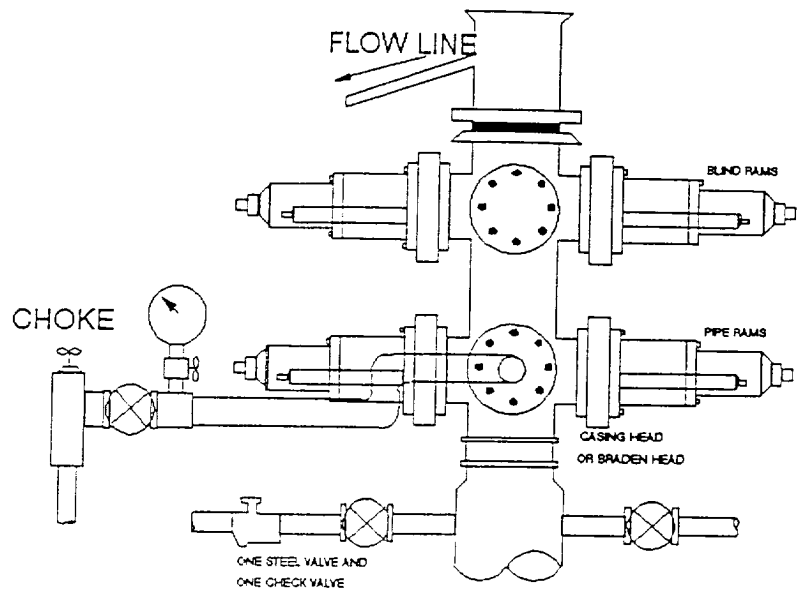
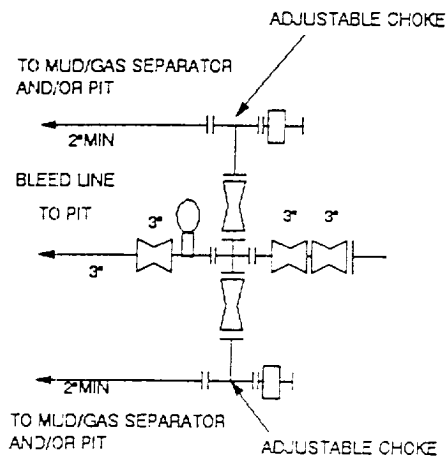
## Bottom Hole Location If Different From Surface

UL or lot No.	Section	Township	Range	Lot Idn	Feet from the	North/South line	Feet from the	East/West line	County
Dedicated Acres 40	Joint or Infill N	Consolidation Code		Order No.					

NO ALLOWABLE WILL BE ASSIGNED TO THIS COMPLETION UNTIL ALL INTERESTS HAVE BEEN CONSOLIDATED  
OR A NON-STANDARD UNIT HAS BEEN APPROVED BY THE DIVISION

	<div style="border: 1px solid black; padding: 5px;"> <p style="text-align: center;"><b>OPERATOR CERTIFICATION</b></p> <p><i>I hereby certify that the information contained herein is true and complete to the best of my knowledge and belief.</i></p> <p style="text-align: right;"> <b>RECEIVED</b>          JUN 25 1997          10:32       </p> <p>Signature: <u>Bobby G. Herbage</u></p> <p>Printed Name: <u>Bobby G. Herbage</u></p> <p>Title: <u>Asst. Drilling Foreman</u></p> <p>Date: <u>June 25, 1997</u></p> </div> <div style="border: 1px solid black; padding: 5px; margin-top: 10px;"> <p style="text-align: center;"><b>SURVEYOR CERTIFICATION</b></p> <p><i>I hereby certify that the well location shown on this plat was plotted from field notes of actual surveys made by me or under my supervision, and that the same is true and correct to the best of my belief.</i></p> <p style="text-align: right;">June 18, 1997</p> <p>Date Surveyed: <u>JUNES</u></p> <p>Signature &amp; Seal of Professional Surveyor: <u>[Signature]</u></p> <p style="text-align: right;">7977</p> <p>W.O. No. <u>7368d</u></p> <p>Certificate No. <u>7977</u></p> <p style="text-align: center;"><b>BASIN SURVEYS</b></p> </div>
--	---

# 3000 PSI WP



## THE FOLLOWING CONSTITUTE MINIMUM BLOWOUT PREVENTER REQUIREMENTS

- A. One double gate blowout preventer with lower rams for pipe and upper rams blind, all hydraulically controlled.
- B. Opening on preventers between rams to be flanged, studded or clamped and at least two inches in diameter.
- C. All connections from operating manifold to preventers to be all steel hose or tube a minimum of one inch in diameter.
- D. The available closing pressure shall be at least 15% in excess of that required with sufficient volume to operate (close, open, and re-close) the preventers.
- E. All connections to and from preventers to have a pressure rating equivalent to that of the BOP's.
- F. Manual controls to be installed before drilling cement plug.
- G. Valve to control flow through drill pipe to be located on rig floor.
- H. All chokes will be adjustable. Choke spool may be used between rams.

**RECEIVED**  
 JUN 27 A 10: 35  
 BUREAU OF LAND MGMT.  
 ROSWELL OFFICE