

DISTRICT I
P.O. Box 1980, Hobbs, NM 88241-1980

State of New Mexico
Energy, Minerals and Natural Resources Department

Form C-102
Revised February 10, 1994
Submit to Appropriate District Office
State Lease - 4 Copies
Fee Lease - 3 Copies

DISTRICT II
P.O. Drawer DD, Artesia, NM 88211-0719

OIL CONSERVATION DIVISION

DISTRICT III
P.O. Box 2088, Santa Fe, NM 87410

P.O. Box 2088
Santa Fe, New Mexico 87504-2088

AMENDED REPORT

DISTRICT IV
P.O. Box 2088, Santa Fe, NM 87504-2088

WELL LOCATION AND ACREAGE DEDICATION PLAT

API Number 30-115-29831	Pool Code 6271	Pool Name Black River Delancey
Property Code	Property Name MALLON "10" FEDERAL	Well Number 3
OGRID No.	Operator Name MALLON OIL COMPANY	Elevation 3360

Surface Location

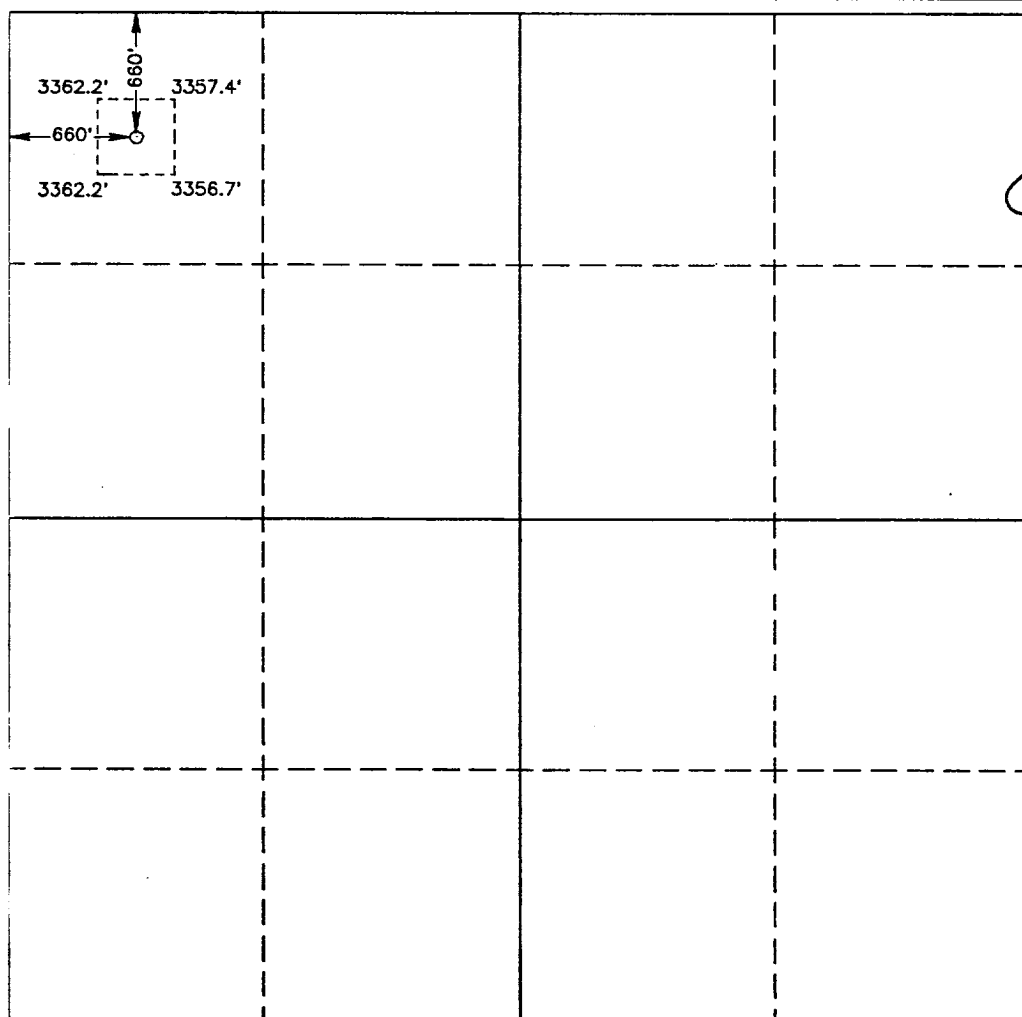
UL or lot No.	Section	Township	Range	Lot Idn	Feet from the	North/South line	Feet from the	East/West line	County
D	10	24 S	26 E		660	NORTH	660	WEST	EDDY

Bottom Hole Location If Different From Surface

UL or lot No.	Section	Township	Range	Lot Idn	Feet from the	North/South line	Feet from the	East/West line	County

Dedicated Acres 40	Joint or Infill	Consolidation Code	Order No.
------------------------------	-----------------	--------------------	-----------

NO ALLOWABLE WILL BE ASSIGNED TO THIS COMPLETION UNTIL ALL INTERESTS HAVE BEEN CONSOLIDATED OR A NON-STANDARD UNIT HAS BEEN APPROVED BY THE DIVISION



OPERATOR CERTIFICATION

I hereby certify the the information contained herein is true and complete to the best of my knowledge and belief.

Duane C Winkler
Signature

Duane C Winkler
Printed Name

Operations Manager
Title

July 1, 1997
Date

SURVEYOR CERTIFICATION

I hereby certify that the well location shown on this plat was plotted from field notes of actual surveys made by me or under my supervision, and that the same is true and correct to the best of my belief.

JUNE 20, 1997
Date Surveyed

[Signature]
Signature

PROF. SURVEYOR
Professional Surveyor

NEW MEXICO

3239
No. 87-116-038

JLP

Certification No. ... CHICHO, WEST, 676
... EIDSON, 3239
... G. EIDSON, 12641