

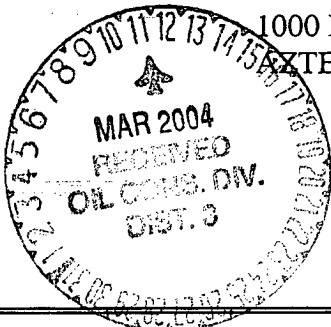
STATE OF NEW MEXICO
ENERGY, MINERALS AND NATURAL RESOURCES DEPARTMENT

Form C-103

Revised 1-1-89

OIL CONSERVATION DIVISION

1000 BRAZOS RD.
AZTEC, NM 87410



Submit 3 copies to
Appropriate District Office

DISTRICT 1
P O Box 1980, Hobbs, NM 88240
DISTRICT 2
P O Drawer DD, Artesia, NM 88210
DISTRICT 3
1000 Rio Brazos Rd., Aztec, NM 87410

WELL API NO. 30-045-28494	
5. Indicate Type of Lease STATE FEE X	
6. State Oil & Gas Lease No.	
7. Lease Name or Unit Agreement Name ROSA UNIT	
<p>SUNDRY NOTICES AND REPORTS ON WELLS (DO NOT USE THIS FORM FOR PROPOSALS TO DRILL OR TO DEEPEN OR PLUG BACK TO A DIFFERENT RESERVOIR. USE "APPLICATION FOR PERMIT" (FORM C-101) FOR SUCH PROPOSALS)</p>	
1. Type of Well: OIL WELL GAS WELL X OTHER	
2. Name of Operator WILLIAMS PRODUCTION COMPANY	
3. Address of Operator P O BOX 3102, MS: 25-2, TULSA, OK 74101	
8. Well No. 224	
9. Pool Name or Wildcat BASIN FRUITLAND COAL	
4. Well Location Unit Letter <u>B</u> : <u>1095</u> Feet From The <u>NORTH</u> Line and <u>2210</u> Feet From The <u>EAST</u> Line Section <u>08</u> Township <u>31N</u> Range <u>6W</u> NMPM SAN JUAN COUNTY	
10. Elevation (Show whether DF, RKB, RT, GR, etc.) 6229' KB	
CHECK APPROPRIATE BOX TO INDICATE NATURE OF NOTICE, REPORT, OR OTHER DATA	
NOTICE OF INTENTION TO:	
PERFORM REMEDIAL WORK TEMPORARILY ABANDON PULL OR ALTER CASING	PLUG AND ABANDON CHANGE PLANS OTHER
SUBSEQUENT REPORT OF:	
REMEDIAL WORK COMMENCE DRILLING OPINIONS CASING TEST AND CEMENT JOB	ALTERING CASING PLUG AND ABANDONMENT OTHER
12. Describe Proposed or Completed Operations (Clearly state all pertinent details, and give pertinent dates, including estimated date of starting any proposed work) SEE RULE 1103. <u>01-14-2004</u> MIRU, spot in ramp & rig, RU rig & spot in equip. SI production compressor, lay flow lines, blow well down. NDWH, NUBOPs, NU cavitation stack, NU blooie lines. TOOH w/93 jts 2 7/8" tbg. Drain lines, put well to sales overnight <u>01-15-2004</u> Warm up equip, blow well down. PU DC's out of pipe basket, tally/caliper same, PU & MU tools. PU & TIH w/6 1/4" Metal Muncher pilot mill & eight 4 3/4" DC's. PU pipe out of basket, tally same. PU & TIH w/pilot mill, BS, eight 4 3/4" DC's & 82 jts 2 7/8" AOH DP, tag TOL @ 2755'. RU 2.5 power swivel, break circ w/14 bph a/s mist. Mill out slips on hanger f/2775'- 2778', run 6 bbl sweep. Hang swivel back. TOOH w/80 jts, stab TIW. Drain lines, put well to sales over night.	
Continued on Back	
I hereby certify that the information above is true and complete to the best of my knowledge and belief.	
SIGNATURE <u>Tracy Ross</u>	TITLE <u>PRODUCTION ANALYST</u> DATE <u>March 4, 2004</u>
TYPE OR PRINT NAME <u>TRACY ROSS</u>	TELEPHONE NO. <u>918/573-6254</u>
(This space for State Use) APPROVED BY <u>Charles...</u>	TITLE <u>DEPUTY OIL & GAS INSPECTOR, DIST. 03</u> DATE <u>MAR 11 2004</u>
CONDITIONS OF APPROVAL, IF ANY:	

01-16-2004 TOO H w/ 1 std 2-7/8" DP, 8 DC's & metal muncher pilot mill, break out & load out tools. MU BHA as follows: 4 3/4" grapple, extension, stop sub, bumper sub, jars, cross over sub, six 4 3/4" DC's & intensifier. CO stripper rubber from 4 3/4" to 2-7/8", CO rams, TIH w/ 81 jts 2-7/8" DP, tie back on single line. Tag TOL, sting into liner, set jars off 3 times @ 80,000#, liner coming up hole. Pull 4 stds DP, PU liner inside of csg, RU on 2 lines, CO rams to 5 1/2", TOO H to liner. Break out & load out Baker's tools, CO stripper rubber to 5 1/2". RU csg crew. LD 6 jts of 5 1/2" P-110 csg, RD csg crew. Drain lines, put well online for weekend.

01-19-2004 TIH w/ bit, eight 4 3/4" DC's, 82 jts 2 7/8" DP, tie back to single line. RU power swivel. PU 2 7/8" DP off pipe rack & tag 1st bridge @ 2836'. Break circ w/ 12 bph a/s mist, CO bridges @ 2836', 2860', 2930' & 10' of solid fill from 2979' to 2989' run two 5 bbl sweeps. Natural flow well. RD power swivel. LD 7 jts 2 7/8" DP, change over to 2 lines. TOO H w/ bit, lock same in top rams. Drain lines, HU well to sales, put on line over night.

01-20-2004 Pull out of hole w/ 1 std 2-7/8" DP & DC's. Start to MU under reamer, received a call from Kirk Place to cease current action because of noise levels. released Baker Oil Tools & cancelled power swivel from Knight Oil Tools. Wait on Sierra to come to location to measure & design noise barriers, PU tools & put well on line.

01-21-2004 MU under reamer. TIH w/ Locomatic under reamer, string float, 8 DC's & 81 jts of 2-7/8" DP to 2790', tie back on single line. PU Knights power swivel. PU 2 jts 2 7/8" DP, open under reamer @ 2830'. Break circulation w/ 12 bph a/s mist, 1 gpb soap. Under ream w/ 15 bph a/s mist, 150' from 2830' to 2989', returns trace drilling mud, heavy coal. LD 7 jts of 2-7/8" DP on rack, pull tool into csg @ 2800'. RD power swivel, PU tools, put well online to sales.

01-22-2004 TOO H w/ under reamer, break out & load out tools. RU power swivel, put bit on DC, lock same in top rams. Natural surge well from surface, 2 hr SI = 160 psi, rets trace coal & light wtr, flow natural for 1 hr. Surge well w/ 12 bph a/s mist @ 180 psi, rets trace coal, trace drilling mud, light wtr. flow nat for 1 hr, drain lines.

01-23-2004 SI for natural surge from surface, 2 hr SI = 160 psi, rets trace coal, light wtr, flow natural for 1 hr, take noise level. Readings 400' off loc on all 4 sides. Natural surge, 2 hr SI = 150 psi, rets trace coal & no wtr, flow nat for 1 hr, RD power swivel. TIH w/ bit to 2790', tie back on single line. RU power swivel. PU 2 7/8" DP off rack, tag fill @ 2930'. Break circ w/ 12 bph a/s mist, rets heavy drilling mud, light coal. CO 50' of fill, from 2930' to 2980', run one 5 bbl sweep. LD 6 jts 2-7/8" DP, set bit @ 2790'

01-26-2004 Natural surge f/ shoe, 3 hr SI = 160 psi, rets trace coal, light wtr, flow natural for 1 hr, help Brent Hale take noise readings off all four sides of location, for approximately 1200' to well head, taking readings every 50', took readings w/ rig & air pkg running, set three sound meters out 400' from loc, set one meter 75' from blooie lines, shut equipment down @ noon. Natural surge, 2 hr SI = 160 psi, rets light coal & wtr, flow natural for 30 min. Natural surge, 1 1/2 hr SI = 140 psi, rets light coal & no wtr, flow natural for 30 min. Drain lines, pick up sound meters to bring in to Brent.

01-27-2004 Set out noise meters to record daily activities. Natural surge from shoe, 2 hr SI = 160 psi, rets light coal & wtr, flow natural for 1 hr. PU 4 jts of 2 7/8" DP, tag fill @ 2929'. Break circulation w/ 12 bph a/s mist. CO 60' of fill from 2929' to 2989', rets med drilling mud, med coal approximately 1/8" in size, work on tight spot @ 2970', loose circulation off & on last 30', pull up to 2970', blow well dry. LD 7 jts 2 7/8" DP, set bit @ 2800'. Drain lines, flow well for 30 min's to get air out. PU noise meter & take to Farmington.

01-28-2004 Natural surge well from shoe, 2 hr SI = 160 psi, rets light coal & light wtr, flow well for 1 hr, 1st time well flowed wtr while flaring. Surge well w/ 10 bph a/s mist @ 180 psi, w/ two 5 bbl soap sweeps, rets light coal & wtr, flow nat for 1 hr. Natural surge well, 2 hr SI = 160 psi, rets trace coal & no wtr, flow natural for 1 hr. Drain up lines, turn well over to sales.

01-29-2004 Natural surge well f/ shoe, 2 hr SI = 160 psi, rets trace coal & light wtr, flow natural for 1/2 hr. Natural surge well from shoe, 2 hr SI = 160 psi, rets trace coal & no wtr, flow natural for 1 hr. Natural surge well from shoe 2 hr SI = 150 psi, rets trace coal & light wtr, flow natural for 1 hr, turn well over to sales, production for 01/28/04 was 797.6 mcf/d, without compressor running

01-30-2004 TIH & tag bridge @ 2939'. RU power swivel, break circ w/12 bph a/s mist, (took 50 min to break circ). CO to TD @ 2989', ret's hvy drlg mud & med fine to 1/8" size coal, run five 4 bbl sweeps. LD 6 jts, hang swivel back. TOO H w/bit. Drain lines, put well on line over weekend.

02-02-2004 PU bit & one 4-3/4" DC, lock same in top rams. Natural surge f/surface, 2.5 hr SI = 140 psi, ret's trace coal, flow nat 1/2 hr. Surge energized w/10 bph a/s mist & two 5 bbl pads @ 220 psi, ret's lt fine coal, flow natural 1.5 hrs. Drain lines, put well to sales overnight.

02-03-2004 TIH w/ bit to 2888' (ice plug in most stands). Tie back on single line, RU power swivel. Break circulation w/ 12 bph a/s mist. CO from 2888' to 2980', ret's drilling mud & med fine to 1/8" size coal, run five 6 bbl sweeps, keep losing circulation 20' off bottom. LD 5 jts, bit @ 2825', flow well natural 1 hr, well unloading steady stream of drilling mud. Drain up, put well on line overnight.

02-04-2004 TIH to 2919'. Break circ w/12 bph a/s mist. CO from 2919' to 2989' (TD) w/12 bph a/s mist, ret's drlg mud & lt-med fine coal, run four 5 bbl sweeps. LD 5 jts, bit @ 2825'. Flow well natural, drain pump & lines, put well online overnight.

02-05-2004 TIH to 2919'. Attempt to break circulation w/ 12 bph a/s mist, pressure to 1300 psi, bit plugged. LD 6 jts, hang swivel back. RU on 2 lines. TOO H w/ bit, well unloading steady stream of drlg mud & fine coal on own, dig coal out of float, lock bit & 1 DC in top rams. Flow well natural, well unloading on own, bucket test = 14 bph, flow to 1/2 stream. Drain up, put well online w/ compressor overnight.

02-06-2004 Surge well w/ 12 bph a/s mist, w/ three 5 bbl soap pads, pressure to 220 psi, rets trace coal & steady stream of thick blk wtr, flow natural for 1.5 hrs, bucket test @ 8 bph. SI for natural surge f/ surface, 2 hr SI = 150 psi, rets trace coal & med wtr, flow natural for 1.5 hrs, drilling mud & fine coal flowed steady. SI well to build up pressure to start compressor, drain lines & turn well over to sales.

02-09-2004 Natural surge, 2 hr SI = 140 psi, rets trace coal & lt wtr. RD power swivel. TIH w/ bit, eight 4 3/4" DC's, 81 jts 2-7/8" DP to 2794', all DC's & about 50 jts of DP had 4" ice plug in the bottom of them. RU power swivel, tie back on single line. PU 6 jts 2-7/8" DP, tag fill @ 2935', pull up 20', break circ w/ 12 bph a/s mist, CO 23' of fill, rets heavy coal & med drilling mud, run two 5 bbl sweeps, coal & drilling mud ran constant for 1 hr, coal was 1/8" to 1/4" in size. Shut off air & mist. LD 6 jts 2-7/8" DP, pull bit to 2794', flow natural until air was out of well, drain lines & turn well to sales.

02-10-2004 Natural surge, 2 hr SI = 150 psi, rets light coal & light wtr, flow natural for 1 hr. PU 2 jts 2-7/8" DP, tag bridge @ 2850'. Break circ w/ 12 bph a/s mist & 2 gal soap per ten bbls wtr, rets light coal & med drilling mud. CO fill, mostly bridges, from 2850' to 2958', rets med coal & med drilling mud, loose circ for approximately 35 mins, work pipe up & down until returns came back to make sure pipe stayed free. CO fill from 2958' to 2989', rets med coal & thick black wtr, work on tight spot @ 2961', run two 4 bbl sweeps, rets light coal & med drilling mud. Shut off mist, blow well dry, black wtr & light drilling mud, approximately 5 bph. LD 6 jts DP, set bit @ shoe, drain up lines, turn well over to sales.

02-11-2004 SI for natural surge, 2 hr SI = 150 psi, rets light coal & med wtr, flow nat for 3 hr, ran bucket tests, well making 7 bph, drilling mud & wtr mix, brought light coal constant. RD power swivel, RU on 2 lines. TOO H w/ bit, lock same in top rams. Flow natural, run bucket test, flow increased to 17.85 bph, mostly wtr, trace of drilling mud, light coal constant 1/4" in size. Drain up lines, run bucket test, flow is @ 9 bph, trace coal, turn well over to sales.

02-12-2004 SI for natural surge, 2 hr SI = 160 psi, rets light coal, 1/4" in size, heavy thick wtr. Natural flow well, run bucket test @ 10:15 well making 12 bph thick black wtr & light coal, @ 11:30 well making 14 bph wtr & light coal, 13:30 well making 12 bph wtr & trace drilling mud, 14:30 well making 10 bph wtr, well made light coal for the first two hrs, drain up lines, turn well over to sales.

02-13-2004 SI for natural surge, 2 hr SI = 165 psi, rets light coal & med wtr, flow natural for 1.5 hrs, after 20 min of flow the well started bringing wtr & drilling mud mix, & light coal constant. SI for natural surge, 2 hr SI = 160 psi, rets light coal & light wtr, appr 8 to 9 bph flow, flow natural for 1.5 hrs, coal tapered off after 15 min flow. Drain lines, SI well to build line pressure to start compressor, turn well over to sales.

02-16-2004 TIH w/ bit to 2794', DC's & some pipe had 4" to 6" ice plugs in them, rig crew had to chip out, tie back on single line. RU power swivel, PU 2 jts of 2 7/8" DP off rack, tag bridge @ 2850'. Break circ w/ 12 bph a/s mist & 2 gals soap per 10 bbls production wtr. CO 3 bridges & 48' of solid fill from 2942' to 2990', work on tight spot @ 2962', loose circ @ 2980' for 45 min, work pipe, when circ came back, rets were drilling mud & light coal, run two 5 bbl sweeps. LD 6 jts DP, drain lines & PU tools, turn well over to sales.

02-17-2004 PU 2 jts 2 7/8" DP, tag fill @ 2850'. Break circ w/ 15 bph a/s mist & 1 gal soap per 10 bbl wtr. CO 4 bridges from 2850' to 2900' & 30' of fill, from 2952' to 2982' losing circ twice for about 20 min, work on tight spots @ 2962' & 2976', rts med coal & wtr, run three 4 bbl sweeps. Lose circ @ 2982' for 45 min, work pipe to mix a/s mist w/ drilling mud & to make sure pipe stayed free, CO fill from 2982' to 2990', rets med coal & drilling mud/ wtr mix, run three 5 bbl soap sweeps. LD 6 jts 2 7/8" DP, drain up lines, turn well over to sales.

02-18-2004 PU 4 jts 2 7/8" DP, tag fill @ 2962'. Break circ w/ 12 bph a/s mist, CO 28' of fill from 2962' to 2990', rets med to light coal & light wtr, run two 5 bbl sweeps, rets light coal & wtr. LD 7 jts DP, change over to two lines, hang power swivel back, TOO H w/ bit, LD DC's on rack. RU csg crew, PU & MU 5.5" setting tool, change out upper rams to 5.5", MU shoe, change out stripper rubber, tally & TIH w/ 5 jts 17# N-80 5.5" liner, RD csg crew, change back to 2 7/8" stripper rubber. TIH w/ shoe, five jts 5.5" csg, setting tool, 88 jts 2 7/8" DP, circ the last 32' down, set shoe at 2986', release setting tool, top of liner is @ 2758', w/ 61' of overlap, spot 7 bbls wtr in liner. RD power swivel, LD 5 jts DP, drain up lines, shut well in for night

02-19-2004 Well SI for night. Warm up equipment, blow well down, over night SI pressure = 170 psi. TOO H, LD 83 jts 2-7/8" DP, break out & load out liner setting tool. ND stripper head, NU lube head, RU Black Warrior to perforate well. Perforate 5.5" liner w/ 3 1/8" HSC guns, 49" diameter, 4.5 pent, 11 grain charges, .59 shot size, made six gun runs @ 2852' - 2872', 2874' - 2897', 2899' - 2919', 2919' - 2941', 2943' - 2962', 2962' - 2985', 516 total shots, all shots fired. RD Black Warrior, change out stripper heads, blow well down. Tally pipe in derrick & TIH w/ notched collar, 10' 2 7/8" sub, 2.25 SN, 92 jts 2 7/8" tbg, 6' 2 7/8" sub, 1 jt 2 7/8" tbg, (93 jts, one 10' & one 6' sub). RU power swivel PU one jt tbg, pump out plug w/ air only, circ hole & tag bottom. LD 1 jt tbg. Land tbg, notched collar is @ 2978', SN @ 2967'. RD power swivel, power tongs, ND BOP stack & blooie lines
NUWH, test to 3000 psi & held, SI well for night

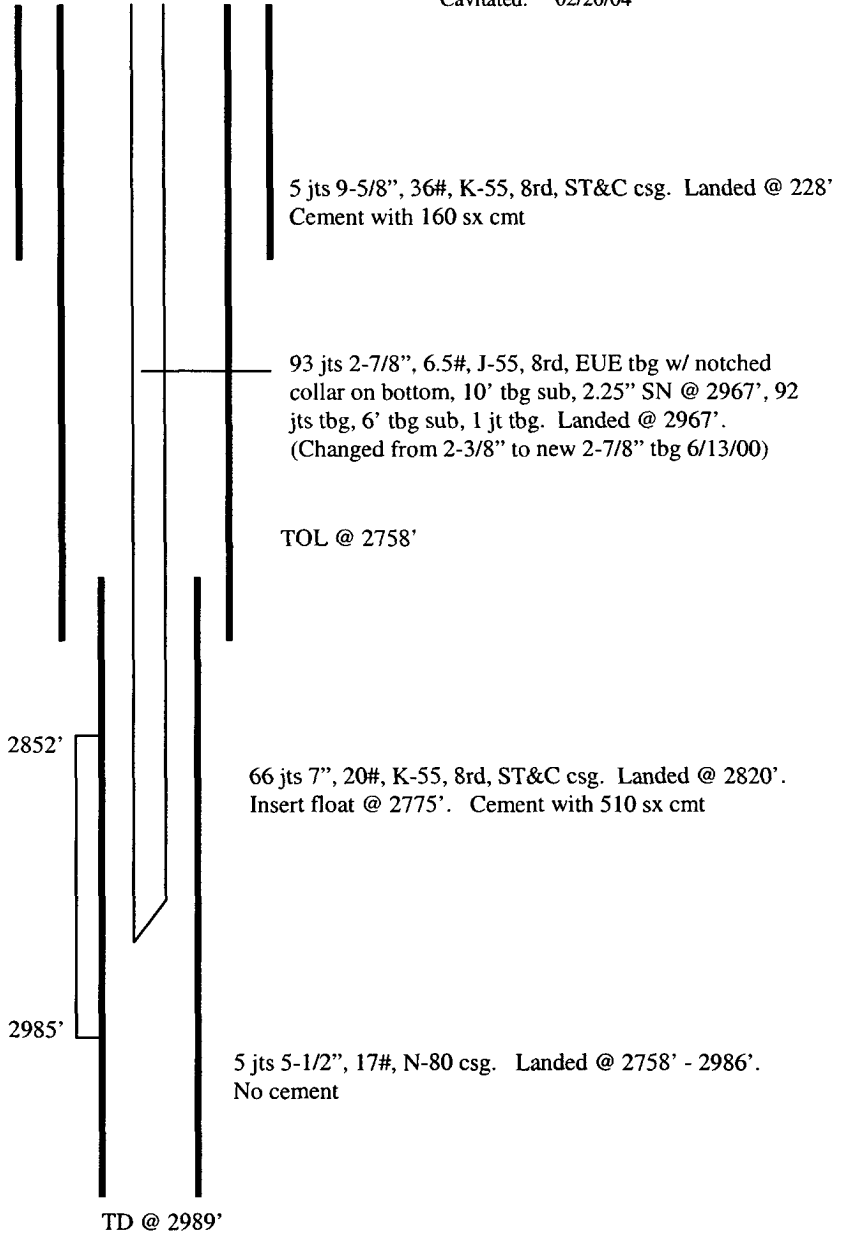
02-20-2004 Flow well up the tbg to reserve pit. RD rig & equipment, help SMC w/ lines & Sierra w/ blooie lines. location was muddy, release Rosa #224 to production, ready to move rig Monday, February 23, 2004.

**ROSA UNIT #224
FRUITLAND COAL**

Spud date : 10/03/90
 Completion date: 11/12/90
 1st Delivery: 01/16/91
 Cavitated: 02/20/04

Location:
 1095' FNL and 2210' FEL
 NW/4 NE/4 Sec 08B, T31N R6W
 San Juan, New Mexico
 Elevation: 6229' GR

API #: 30-045-28494



Top	Depth
Ojo Alamo	2150'
Kirtland	2285'
Fruitland	2820'

Original Perfs: 2912' – 2994' (11/90)

Current Perfs: 2852' – 2872',
 2874' – 2897', 2899' – 2941',
 2943' – 2985', 516 total holes,
 (0.59") 03/04

Under ream from 2830' to 2989'

Hole Size	Casing	Cement	Volume	Top Of CMT
12-1/4"	9-5/8", 36#	160 sx	189 cu. ft.	surface
8-3/4"	7", 20#	510 sx	848 cu. ft.	175'
6-1/4"	5-1/2", 23#	n/a	n/a	n/a