

UNITED STATES  
DEPARTMENT OF THE INTERIOR  
BUREAU OF LAND MANAGEMENT

RECEIVED

APPLICATION FOR PERMIT TO DRILL, DEEPEN, OR PLUG BACK

1a. Type of Work  
DRILL

1b. Type of Well  
GAS

2. Operator  
**BURLINGTON**  
RESOURCES OIL & GAS COMPANY LP

3. Address & Phone No. of Operator  
PO Box 4289, Farmington, NM 87498  
(505) 326-9700

4. Location of Well  
1300' FNL, 10' FWL  
Latitude 36° 46.22, Longitude 107° 27.31

5. Lease Number  
NMSF-0807116A  
Unit Reporting Number  
891000538A

6. If Indian, All. or Tribe

7. Unit Agreement Name  
San Juan 30-6 Unit

8. Farm or Lease Name  
San Juan 30-6 Unit

9. Well Number  
484S

10. Field, Pool, Wildcat  
Basin Fruitland Coal

11. Sec., Twn, Rge, Mer. (NMPM)  
Sec. 34, T-30-N, R-6-W  
API # 30-039-27653

12. County  
Rio Arriba

13. State  
NM

14. Distance in Miles from Nearest Town  
9 miles from Gobernador

15. Distance from Proposed Location to Nearest Property or Lease Line  
10'

16. Acres in Lease

17. Acres Assigned to Well  
320 W/2

18. Distance from Proposed Location to Nearest Well, Drlg, Compl, or Applied for on this Lease  
900'

19. Proposed Depth  
3441'

20. Rotary or Cable Tools  
Rotary

21. Elevations (DF, FT, GR, Etc.)  
6419' GR

22. Approx. Date Work will Start

23. Proposed Casing and Cementing Program  
See Operations Plan attached

24. Authorized by: Nancy Oltsmanns  
Senior Staff Specialist

Date 10-16-03

PERMIT NO. \_\_\_\_\_ APPROVAL DATE \_\_\_\_\_

APPROVED BY DM TITLE \_\_\_\_\_ DATE 4-14-04

Archaeological Report attached

Threatened and Endangered Species Report attached

NOTE: This format is issued in lieu of U.S. BLM Form 3160-3

Title 18 U.S.C. Section 1001, makes it a crime for any person knowingly and willfully to make to any department or agency of the United States any false, fictitious or fraudulent statements or presentations as to any matter within its jurisdiction.

No notification required under Order R-8768-F

See Attached Conditions of Approval

This document is subject to technical and procedural review pursuant to 43 CFR 3165.3 and appeal pursuant to 43 CFR 3165.4

NMOCD

DRILLING OPERATIONS AUTHORIZED ARE SUBJECT TO COMPLIANCE WITH ATTACHED "GENERAL REQUIREMENTS".

District II  
PO Drawer DD, Artesia, NM 88211-0719

District III  
1000 Rio Brazos Rd., Aztec, NM 87410

District IV  
PO Box 2088, Santa Fe, NM 87504-2088

OIL CONSERVATION DIVISION  
PO Box 2088  
Santa Fe, NM 87504-2088

Instructions on back  
Submit to Appropriate District Office  
State Lease - 4 Copies  
Fee Lease - 3 Copies

☐ AMENDED REPORT

WELL LOCATION AND ACREAGE DEDICATION PLAT

*API Number 30-039- <b>27653</b>		*Pool Code 71629	*Pool Name Basin Fruitland Coal
*Property Code 7469	*Property Name SAN JUAN 30-6 UNIT		*Well Number 484S
*GRID No. 14538	*Operator Name BURLINGTON RESOURCES OIL & GAS COMPANY, LP		*Elevation 6419'

<sup>10</sup> Surface Location

UL or lot no.	Section	Township	Range	Lot 1st	Feet from the	North/South line	Feet from the	East/West line	County
D	34	30N	6W		1300	NORTH	10	WEST	RIO ARriba

<sup>11</sup> Bottom Hole Location If Different From Surface

UL or lot no.	Section	Township	Range	Lot 1st	Feet from the	North/South line	Feet from the	East/West line	County

<sup>12</sup> Dedicated Acres FTC-W/320	<sup>13</sup> Joint or Infill	<sup>14</sup> Consolidation Code	<sup>15</sup> Order No.
--	-------------------------------	----------------------------------	-------------------------

NO ALLOWABLE WILL BE ASSIGNED TO THIS COMPLETION UNTIL ALL INTERESTS HAVE BEEN CONSOLIDATED OR A NON-STANDARD UNIT HAS BEEN APPROVED BY THE DIVISION

16

LOT 1  
LOT 2  
LOT 3  
LOT 4  
LOT 5  
LOT 6  
TRACT 47  
TRACT 48  
SF-080711-A  
SF-080711-B  
FEE  
5278.68'  
2620'  
1300'  
10'  
1335'  
5280.00'  
349.5'  
LAT: 36°46.3658'N  
LONG: 107°27.5155'W  
DATUM: NAD27  
APR 2004  
RECEIVED  
OIL CONSERV. DIV.  
DIST. 6

<sup>17</sup> OPERATOR CERTIFICATION  
I hereby certify that the information contained herein is true and complete to the best of my knowledge and belief  
*Nancy Oltmanns*  
Signature  
Nancy Oltmanns  
Printed Name  
Senior Staff Specialist  
Title  
10-16-03  
Date

<sup>18</sup> SURVEYOR CERTIFICATION  
I hereby certify that the well location shown on this plat was plotted from field notes of actual surveys made by me or under my supervision, and that the same is true and correct to the best of my belief.  
Survey Date: AUGUST 29, 2003  
Signature and Seal of Professional Surveyor  
  
JASON C. EDWARDS  
Certificate Number 15269

## OPERATIONS PLAN

**Well Name:** San Juan 30-6 Unit #484S  
**Location:** 1300' FNL, 10' FWL, Section 34, T-30-N, R-6-W  
Latitude 36° 46.22, Longitude 107° 27.31  
Rio Arriba County, NM  
**Formation:** Basin Fruitland Coal  
**Elevation:** 6419' GR

Formation:	Top	Bottom	Contents
Surface	San Jose	2371'	
Ojo Alamo	2371'	2566'	aquifer
Kirtland	2566'	2891'	gas
Fruitland	2891'	3178'	gas
<b>Intermediate casing</b>	<b>3128'</b>		
Top of Coal	3178'	3356'	
Base of Coal	3356'		
Pictured Cliffs	3361'		
<b>Total Depth</b>	<b>3441'</b>		

**Logging Program:**

Open hole - GR/RHOB from TD to 3128'  
Mud log - TD to 3441'

**Coring Program:** none

**Mud Program:**

Interval	Type	Weight	Vis.	Fluid Loss
0- 120'	Spud/Air/Air/Mist	8.4-9.0	40-50	no control
120-3128'	Non-dispersed	8.4-9.0	30-60	no control
3128-3441'	Air/Mist			no control

**Casing Program (as listed, the equivalent, or better):**

Hole Size	Depth Interval	Csg. Size	Wt.	Grade
12 1/4"	0' - 120'	9 5/8"	32.3#	H-40
8 3/4"	0' - 3128'	7"	20.0#	J-55
6 1/4"	3128' - 3441'	open hole		

**Alternate Casing Program (as listed, the equivalent, or better):**

Hole Size	Depth Interval	Csg. Size	Wt.	Grade
12 1/4"	0' - 120'	9 5/8"	32.3#	H-40
8 3/4"	0' - 3128'	7"	20.0#	J-55
6 1/4"	3088' - 3441'	5 1/2"	15.5#	J-55

**Tubing Program:**

0' - 3441'      2 3/8"      4.7#      J-55

**Float Equipment:** 9 5/8" surface casing - saw tooth guide shoe. Centralizers will be run in accordance with Onshore Order #2.

7" intermediate casing - guide shoe and self-fill float collar. Standard centralizers run every other joint above shoe. Two turbolizing type centralizers - one below and one into the base of the Ojo Alamo @ 2566'. Standard centralizers thereafter every fourth joint up to the base of the surface pipe.

**Wellhead Equipment:** 9 5/8" x 7" x 2 3/8" x 11" 2000 psi xmas tree assembly.

**Cementing:**

9 5/8" surface casing -  
Pre-Set Drilled Cement with 23 sx Type I, II cement with 20% flyash mixed at 14.5 ppg, 1.61 cu ft per sack yield. (37 cu ft of slurry, bring cement to surface) Wait on cement for 24 hours for pre-set holes before pressure testing or drilling out from under surface.

Conventionally Drilled:  
Cement with 88 sx Type III cement with 0.25 pps Celloflake, 3% CaCl. (113 cu ft of slurry, 200% excess, bring cement to surface) Wait on cement for 8 hrs for conventionally set holes before pressure tessting or drilling out from under surface.

**Wait on cement until cement establishes 250 psi compressive strength prior to nipple up of BOP.**

7" intermediate casing - lead w/273 sacks Premium Lite cement with 3% calcium chloride, 0.25 pps Celloflake, 5 pps LCM-1, 0.4% fluid loss, 0.4% sodium metasilicate. Tail with 90 sacks Type III cement with 1% calcium chloride, 0.25 pps Celloflake, 0.2% fluid loss (705 cu.ft., 50% excess to circulate to surface).

5 1/2" liner - will not be cemented if run.

Note: If open hole logs are run, cement volumes will be based on 25% excess over caliper volumes.

**BOP and tests:**

Surface to intermediate TD - 11" 2000 psi (minimum) double gate BOP stack (Reference Figure #1). Prior to drilling out surface casing, test BOP and casing to 600 psi/30 min.

Intermediate TD to Total Depth - 7 1/6" 2000 psi (minimum) double gate BOP stack (Reference Figure #2). Prior to drilling out intermediate casing, test BOP and casing to 1500 psi for 30 minutes; all pipe rams and casing to 1500 psi for 30 minutes each.

From surface to TD - choke manifold (Reference Figure #3).

Pipe rams will be actuated at least once each day and blind rams actuated once each trip to test proper functioning. An upper kelly cock valve with handle and drill string safety valves to fit each drill string will be maintained and available on the rig floor.

**Additional information:**

- The Fruitland Coal formation will be completed.
- Anticipated pore pressure for the Fruitland is 500 psi.
- This gas is dedicated.
- The west half of Section 34 is dedicated to this well.

Drilling Engineer:

*James M. McCauley*

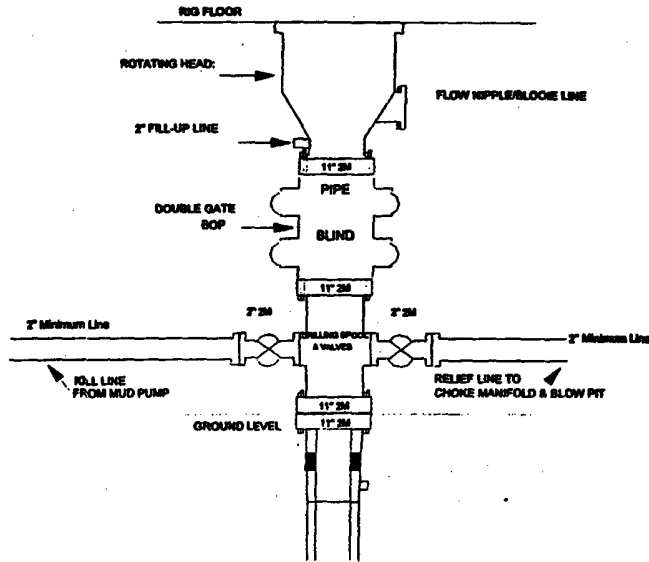
Date:

*FEBRUARY 13, 2004*

# BURLINGTON RESOURCES

## Burlington Resources

### Drilling Rig 2000 psi System

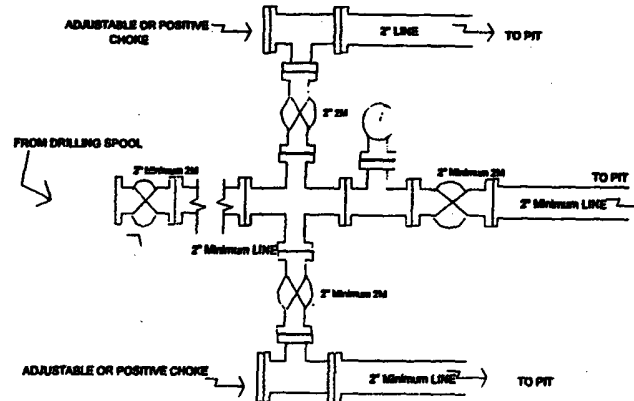


BOP Installation from Surface Casing Point to Total Depth. 11" Bore 10" Nominal, 2000 psi working pressure double gate BOP to be equipped with blind rams and pipe rams. A 500 psi rotating head on top of ram preventers. All BOP equipment is 2,000 psi working pressure

Figure #1

4-20-01

### Drilling Rig Choke Manifold Configuration 2000 psi System

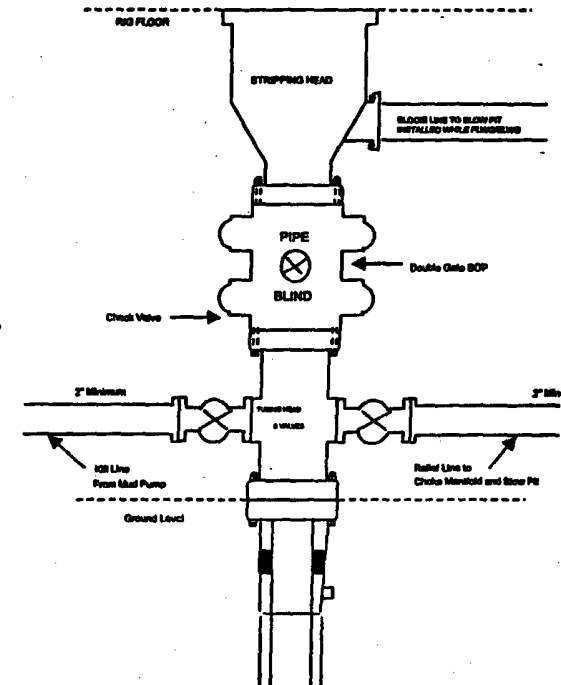


Choke manifold installation from Surface Casing Point to Total Depth. 2,000psi working pressure equipment with two chokes.

Figure #3

# BURLINGTON RESOURCES

## Completion/Workover Rig BOP Configuration 2,000 psi System

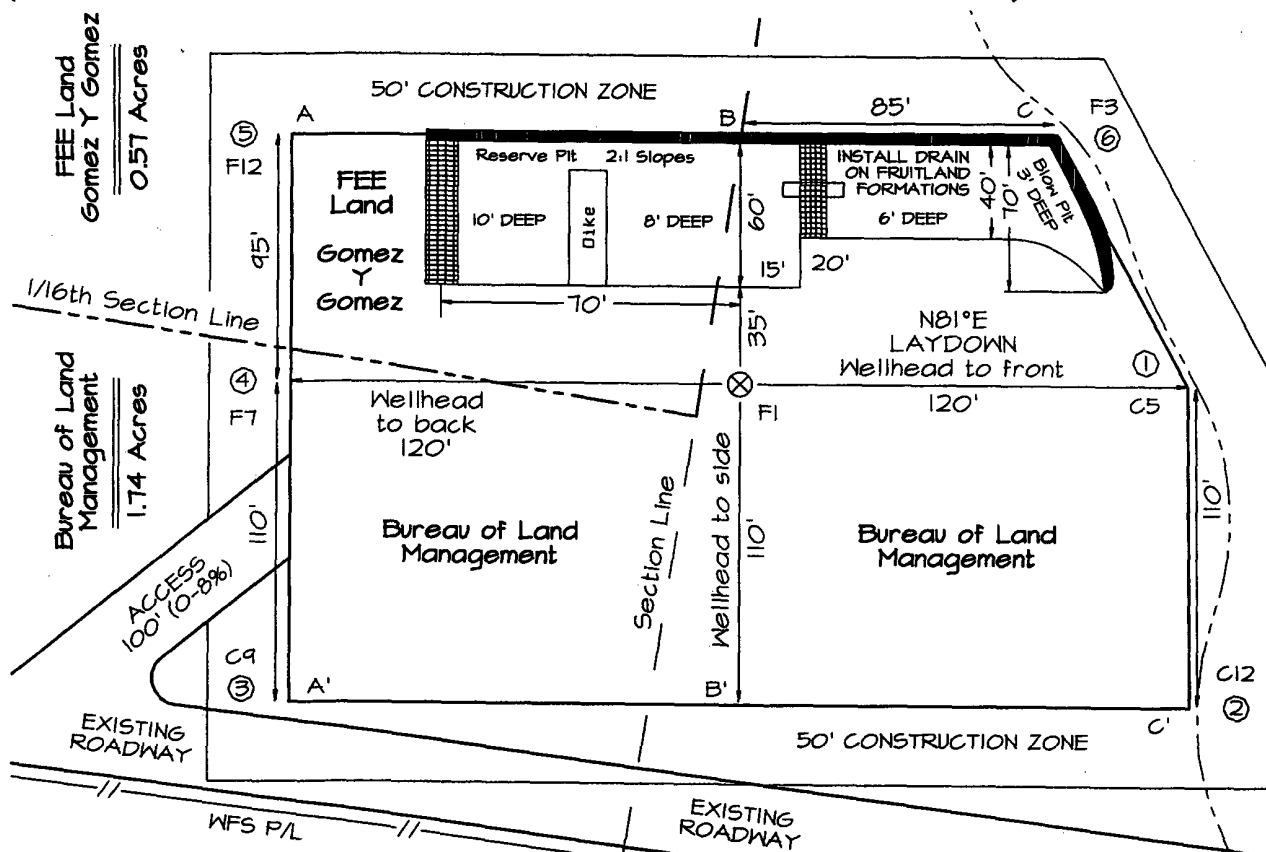


Minimum BOP Installation for all Completion/Workover Operations. 7-1/16" bore, 2000 psi minimum working pressure double gate BOP to be equipped with blind and pipe rams. A stripping head to be installed on the top of the BOP. All BOP equipment is 2000 psi working pressure or greater excluding 500 psi stripping head.

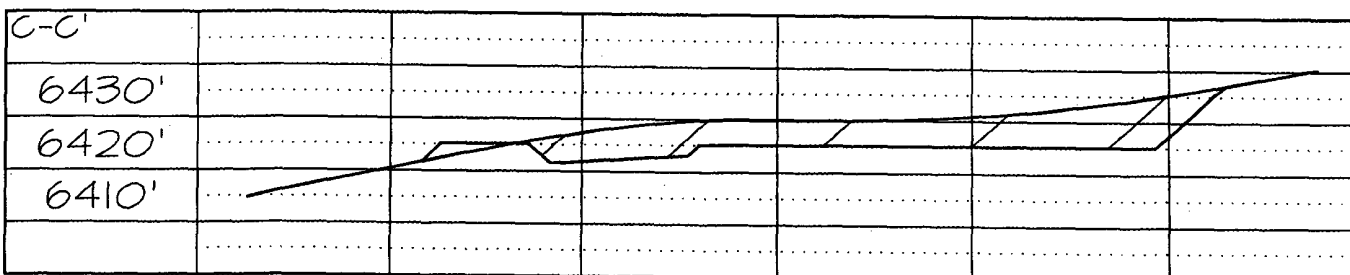
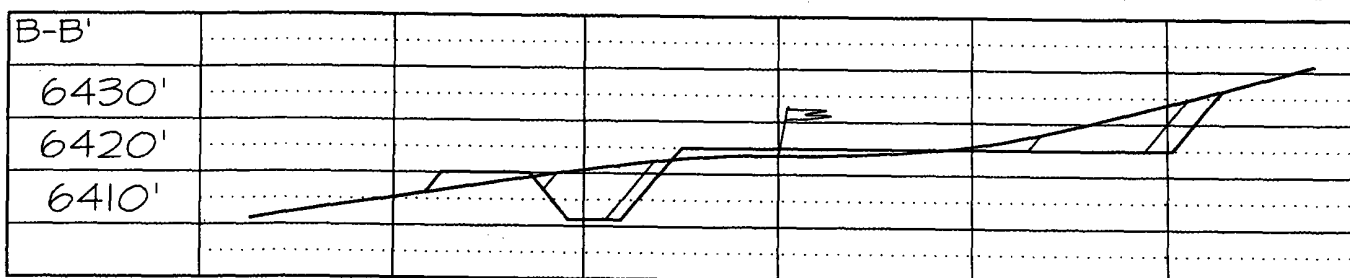
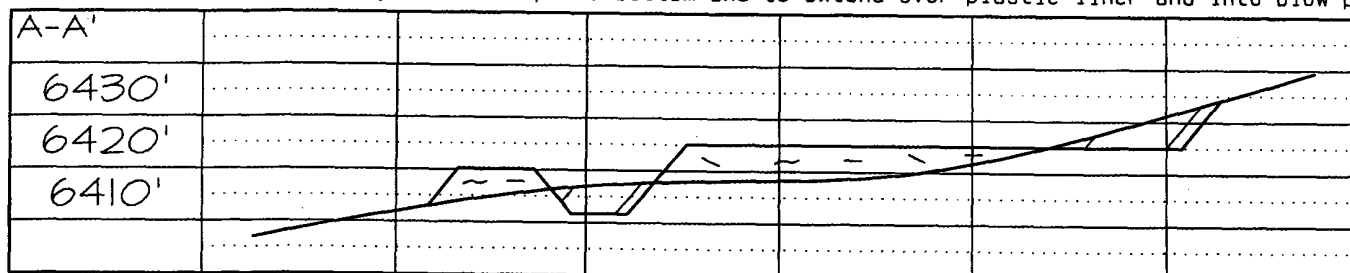
Figure #2

4-20-01

BURLINGTON RESOURCES OIL & GAS COMPANY SAN JUAN COUNTY UNIT #443  
 1300' FNL & 10' FWL, SECTION 34, T30N, R6W, NMPM, RIO ARriba COUNTY, NM  
 GROUND ELEVATION: 6419' DATE: AUGUST 29, 2003



Reserve Pit Dike: to be 8' above Deep side (overflow - 3' wide and 1' above shallow side).  
 Blow Pit: overflow pipe halfway between top and bottom and to extend over plastic liner and into blow pit.



Note: Contractor should call One-Call for location of any marked or unmarked buried pipelines or cables on well pad and/or access road at least two (2) working days prior to construction