

UNITED STATES
DEPARTMENT OF THE INTERIOR
BUREAU OF LAND MANAGEMENT

APPLICATION FOR PERMIT TO DRILL, DEEPEN, OR PLUG BACK

1a. Type of Work
DRILL

1b. Type of Well
GAS

2. Operator
BURLINGTON
RESOURCES OIL & GAS COMPANY LP

3. Address & Phone No. of Operator
PO Box 4289, Farmington, NM 87499
(505) 326-9700

4. Location of Well
1430' FNL, 1925' FWL
Latitude 36° 37.16 Longitude 107° 23.04

14. Distance in Miles from Nearest Town
6 miles from Gobernador

15. Distance from Proposed Location to Nearest Property or Lease Line
1430'

16. Acres in Lease

17. Acres Assigned to Well
320 N/2

18. Distance from Proposed Location to Nearest Well, Drig, Compl, or Applied for on this Lease
1000'

19. Proposed Depth
7668'

20. Rotary or Cable Tools
Rotary

21. Elevations (DF, FT, GR, Etc.)
6436' GR

22. Approx. Date Work will Start

23. Proposed Casing and Cementing Program
See Operations Plan attached

24. Authorized by: Nancy Oltsmanns
Senior Staff Specialist

5. Lease Number
NMSF-079521

Unit Reporting Number
MV-8910009490
DK-891000949A

6. If Indian, All. or Tribe

7. Unit Agreement Name
San Juan 28-5 Unit

8. Farm or Lease Name
San Juan 28-5 Unit

9. Well Number
41N

10. Field, Pool, Wildcat
Blanco MV/Basin DK

11. Sec., Twn, Rge, Mer. (NMPM)
F Sec. 32, T-28-N, R-5-W
API # 30-039- 27665

12. County
Rio Arriba

13. State
NM

PERMIT NO. _____ APPROVAL DATE _____

APPROVED BY DM TITLE _____ DATE 4-19-04

Archaeological Report to be submitted

Threatened and Endangered Species Report to be submitted

NOTE: This format is issued in lieu of U.S. BLM Form 3160-3

Title 18 U.S.C. Section 1001, makes it a crime for any person knowingly and willfully to make to any department or agency of the United States any false, fictitious or fraudulent statements or presentations as to any matter within its jurisdiction.

DRILLING OPERATIONS AUTHORIZED ARE
SUBJECT TO COMPLIANCE WITH ATTACHED
"GENERAL REQUIREMENTS".

NMOCD

This action is subject to technical and
procedural review pursuant to 43 CFR 3165.3
and appeal pursuant to 43 CFR 3165.4

RECEIVED
2004 APR 10 PM 1:5
070 Farmington, NM

District I
PO Box 1980, Hobbs, NM 88241-1980

District II
PO Drawer DD, Artesia, NM 88211-0719

District III
1000 Rio Brazos Rd., Aztec, NM 87410

District IV
PO Box 2088, Santa Fe, NM 87504-2088

State of New Mexico
Energy, Minerals & Natural Resources Department

Form C-102
Revised February 21, 1994

Instructions on back
Submit to Appropriate District Office
State Lease - 4 Copies
Fee Lease - 3 Copies

OIL CONSERVATION DIVISION
PO Box 2088
Santa Fe, NM 87504-2088

RECEIVED
2004 MAR 10 PM 1 AMENDED REPORT

070 Escondido, NM

WELL LOCATION AND ACREAGE DEDICATION PLAT

| | | | |
|-------------------------------------|--|---------------------------|---|
| *API Number 30-039- 27665 | | *Pool Code 72319/71599 | *Pool Name Blanco Mesaverde/Basin Dakota |
| *Property Code 7460 | *Property Name SAN JUAN 28-5 UNIT | | *Well Number 41N |
| *GRID No. 14538 | *Operator Name BURLINGTON RESOURCES OIL & GAS COMPANY, LP | | *Elevation 6436' |

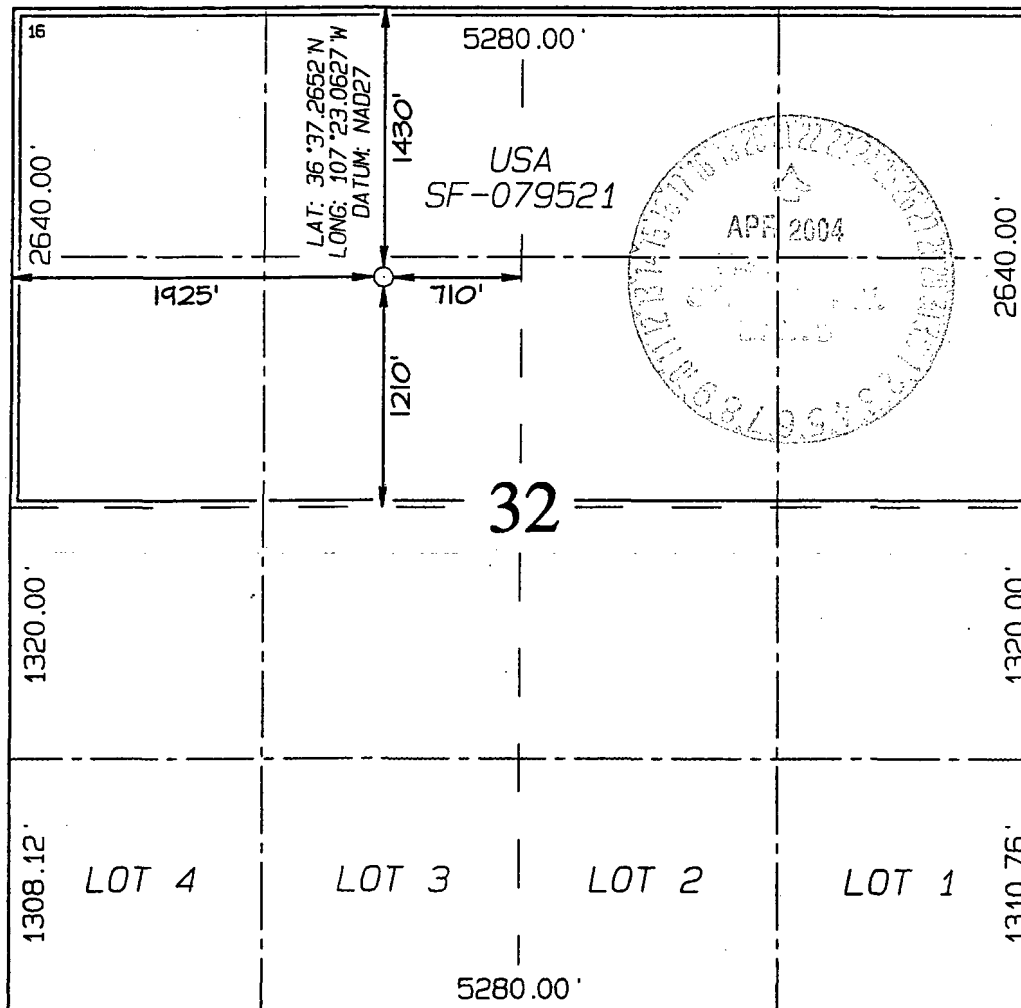
10 Surface Location

| UL or lot no. | Section | Township | Range | Lot Idn | Feet from the | North/South line | Feet from the | East/West line | County |
|---------------|---------|----------|-------|---------|---------------|------------------|---------------|----------------|------------|
| F | 32 | 28N | 5W | | 1430 | NORTH | 1925 | WEST | RIO ARriba |

11 Bottom Hole Location If Different From Surface

| UL or lot no. | Section | Township | Range | Lot Idn | Feet from the | North/South line | Feet from the | East/West line | County |
|--|---------|----------|-------|---------|--------------------|-----------------------|---------------|----------------|--------|
| 12 Dedicated Acres MV-N/320 DK-N/320 | | | | | 13 Joint or Infill | 14 Consolidation Code | 15 Order No. | | |

NO ALLOWABLE WILL BE ASSIGNED TO THIS COMPLETION UNTIL ALL INTERESTS HAVE BEEN CONSOLIDATED OR A NON-STANDARD UNIT HAS BEEN APPROVED BY THE DIVISION



17 OPERATOR CERTIFICATION

I hereby certify that the information contained herein is true and complete to the best of my knowledge and belief

Nancy Oltmanns
Signature

Nancy Oltmanns
Printed Name

Senior Staff Specialist
Title

3-2-04
Date

18 SURVEYOR CERTIFICATION

I hereby certify that the well location shown on this plat was plotted from field notes of actual surveys made by me or under my supervision, and that the same is true and correct to the best of my belief.

Date of Survey: JULY 15, 2003

Signature and Seal of Professional Surveyor



Jason C. Edwards
Certificate Number 15269

OPERATIONS PLAN

Well Name: San Juan 28-5 Unit #41N
Location: 1430' FNL, 1925' FWL, Sec 32, T-28-N, R-5-W
Rio Arriba County, NM
Latitude 36° 37.2652, Longitude 107° 23.0627
Formation: Blanco Mesaverde/Basin Dakota

Total Depth: 7668'

Logging Program: See San Juan 28-5 Unit Master Operations Plan

Mud Program: See 28-5 Unit Master Operations Plan

Casing Program (as listed, the equivalent, or better):

| <u>Hole Size</u> | <u>Depth Interval</u> | <u>Csg. Size</u> | <u>Wt.</u> | <u>Grade</u> | <u>Cement</u> |
|------------------|-----------------------|------------------|------------|--------------|---------------|
| 12 1/4" | 0' - 200' | 9 5/8" | 32.3# | WC-50 | 188 cu.ft. |
| 8 3/4" | 0' - 3468' | 7" | 20.0# | J-55 | 772 cu.ft. |
| 6 1/4" | 0' - 7668' | 4 1/2" | 10.5# | J-55 | 572 cu.ft. |

Tubing Program: See 28-5 Unit Master Operations Plan

- The Mesaverde and Dakota formations will be completed and commingled.
- The north half of Section 32 is dedicated to the Mesaverde and the Dakota formations in this well.
- Gas is dedicated.

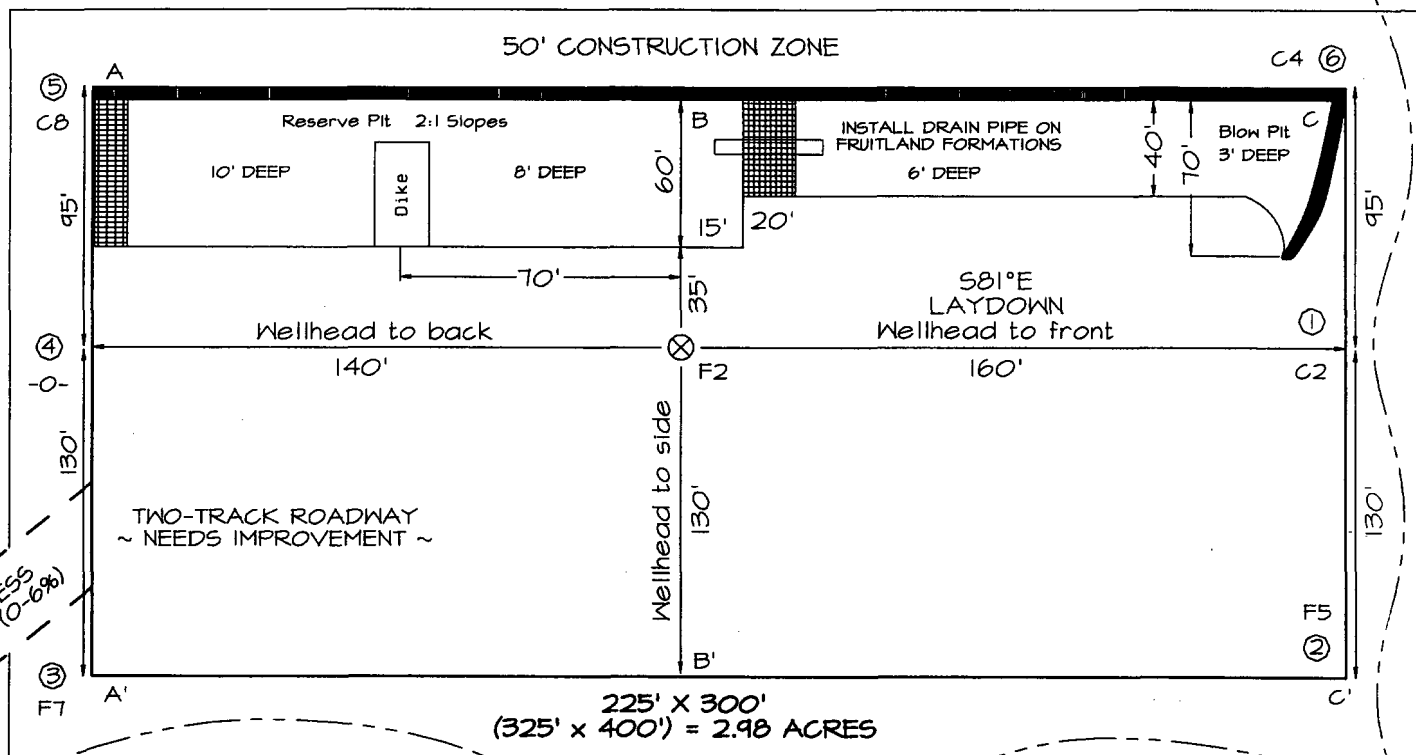
Sean Corrigan
Drilling Engineer

March 9, 2004
Date

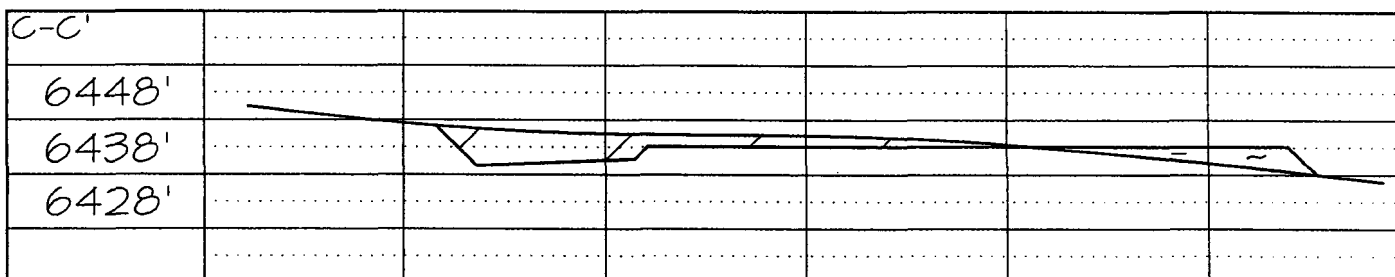
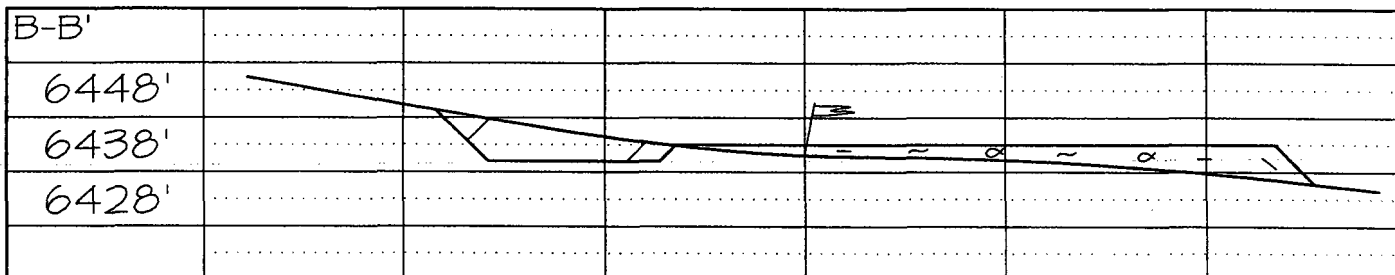
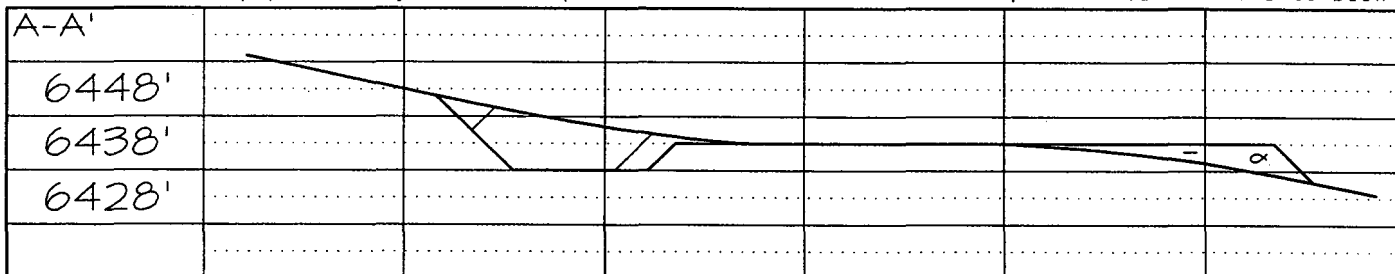
PLAT #1

BURLINGTON RESOURCES OIL & GAS COMPANY, LP
SAN JUAN 28-5 UNIT #41N, 1430' FNL & 1925' FWL
SECTION 32, T28N, R5W, NMPM, RIO ARriba, NM
GROUND ELEVATION: 6436' DATE: JULY 15, 2003

LATITUDE: 36°37'16"
LONGITUDE: 107°23'04"
 DATUM: NAD1927



Reserve Pit Dike: to be 8' above Deep side (overflow - 3' wide and 1' above shallow side).
 Blow Pit: overflow pipe halfway between top and bottom and to extend over plastic liner and into blow pit.



Note: Contractor should call One-Call for location of any marked or unmarked buried pipelines or cables on well pad and/or access road at least two (2) working days prior to construction