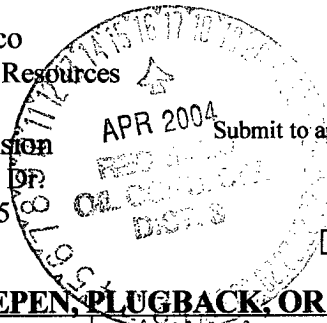


District I
1625 N. French Dr., Hobbs, NM 88240
District II
1301 W. Grand Avenue, Artesia, NM 88210
District III
1000 Rio Brazos Road, Aztec, NM 87410
District IV
1220 S. St. Francis Dr., Santa Fe, NM 87505

State of New Mexico
Energy Minerals and Natural Resources

Form C-101
Revised June 10, 2003

Oil Conservation Division
1220 South St. Francis Dr.
Santa Fe, NM 87505



Submit to appropriate District Office
State Lease - 6 Copies
Fee Lease - 5 Copies

AMENDED REPORT

APPLICATION FOR PERMIT TO DRILL, RE-ENTER, DEEPEN, PLUGBACK, OR ADD A ZONE

¹ Operator Name and Address HEC PETROLEUM, INC. C/o Mike Pippin, 3104 N. Sullivan Ave. Farmington, NM 87401		² OGRID Number 009812
³ Property Code 14944		³ API Number 30-045-32312
⁵ Property Name RIGGS		⁶ Well No. 4

⁷ Surface Location

UL or lot no.	Section	Township	Range	Lot Idn	Feet from the	North/South line	Feet from the	East/West line	County
P	4	29N	12W		1070'	South	755'	East	San Juan

⁸ Proposed Bottom Hole Location If Different From Surface

UL or lot no.	Section	Township	Range	Lot Idn	Feet from the	North/South line	Feet from the	East/West line	County
⁹ Proposed Pool 1 Basin Fruitland Coal					¹⁰ Proposed Pool 2				

¹¹ Work Type Code N	¹² Well Type Code G	¹³ Cable/Rotary R	¹⁴ Lease Type Code P	¹⁵ Ground Level Elevation 5810'
¹⁶ Multiple No	¹⁷ Proposed Depth 2000'	¹⁸ Formation Pictured Cliffs	¹⁹ Contractor None Yet	²⁰ Spud Date3/ May 2004

²¹ Proposed Casing and Cement Program

Hole Size	Casing Size	Casing weight/foot	Setting Depth	Sacks of Cement	Estimated TOC
8.75"	7"	20#	200'	55	Surface
6.25"	4.5"	11.6#	2000'	231	Surface

²² Describe the proposed program. If this application is to DEEPEN or PLUG BACK, give the data on the present productive zone and proposed new productive zone. Describe the blowout prevention program, if any. Use additional sheets if necessary. Drill 8-3/4" hole to 200' using fresh water mud. Run & cement 7" surface casing to surface. WOC 12 hours. Nipple up 7-1/16" 3000# BOPE (annular). Pressure test surface casing & BOPE to minimum of 600 psig for 15 minutes. Drill 6-1/4" hole to TD using polymer and water. Log well. Run 4-1/2" production casing and cement to surface in a single stage. Move out drilling rig. Move in completion equipment. Run cased hole correlation log. Test production casing to 3800 psig for 15 minutes. Perforate select Fruitland Coal intervals and stimulate with a sand frac treatment. Install production equipment, 2-3/8" tubing, and gas sales meter. Complete as a single Fruitland Coal gas well.

²³ I hereby certify that the information given above is true and complete to the best of my knowledge and belief. Signature: <i>Mike Pippin</i>	OIL CONSERVATION DIVISION	
	Approved by: <i>[Signature]</i>	Title: <i>DEPUTY OIL & GAS INSPECTOR, DIST. IV</i>
Printed name: Mike Pippin	Approval Date: APR 16 2004	Expiration Date: APR 16 2005
Title: Agent - Petr. Engr.		
E-mail Address: mpippin@ddbroadband.com		
Date: April 12, 2004	Phone: 505-327-4573	Conditions of Approval: Attached <input checked="" type="checkbox"/>

DISTRICT I
1626 N. French Dr., Hobbs, N.M. 88240

State of New Mexico
Energy, Minerals & Natural Resources Department

Form C-102
Revised August 15, 2000

DISTRICT II
811 South First, Artesia, N.M. 88210

OIL CONSERVATION DIVISION
2040 South Pacheco
Santa Fe, NM 87505

Submit to Appropriate District Office
State Lease - 4 Copies
Fee Lease - 3 Copies

DISTRICT III
1000 Rio Brazos Rd., Aztec, N.M. 87410

AMENDED REPORT

DISTRICT IV
2040 South Pacheco, Santa Fe, NM 87505

WELL LOCATION AND ACREAGE DEDICATION PLAT

*API Number 30045-32312	*Pool Code 71629	*Pool Name BASIN FRUITLAND COAL
*Property Code 14944	*Property Name RIGGS	*Well Number 4
*OGRID No. 009812	*Operator Name HEC PETROLEUM, INC.	*Elevation 5810'

¹⁰ Surface Location

UL or lot no.	Section	Township	Range	Lot Idn	Feet from the	North/South line	Feet from the	East/West line	County
P	4	29-N	12-W		1070	SOUTH	755	EAST	SAN JUAN

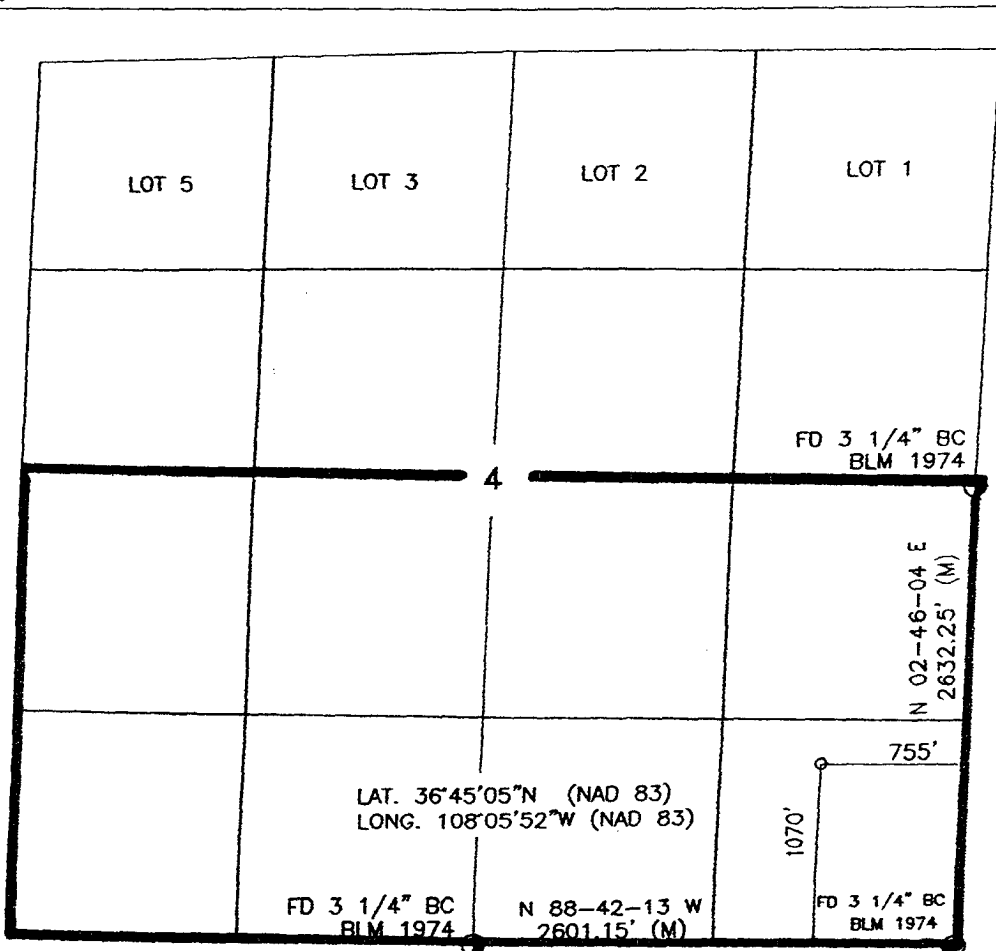
¹¹ Bottom Hole Location If Different From Surface

UL or lot no.	Section	Township	Range	Lot Idn	Feet from the	North/South line	Feet from the	East/West line	County

¹² Dedicated Acres 5/2 320	¹³ Joint or Infill I	¹⁴ Consolidation Code	¹⁵ Order No.
--	------------------------------------	----------------------------------	-------------------------

NO ALLOWABLE WILL BE ASSIGNED TO THIS COMPLETION UNTIL ALL INTERESTS HAVE BEEN CONSOLIDATED OR A NON-STANDARD UNIT HAS BEEN APPROVED BY THE DIVISION

16



17 OPERATOR CERTIFICATION

I hereby certify that the information contained herein is true and complete to the best of my knowledge and belief.

Mike Pippin
Signature
MIKE PIPPIN
Printed Name
AGENT - PETR. ENGR.
Title
4/12/04
Date

18 SURVEYOR CERTIFICATION

I hereby certify that the well location shown on this plat was plotted from field notes of actual surveys made by me or under my supervision, and that the same is true and correct to the best of my belief.

30-04
Date of Survey
Signature and Seal of Professional Surveyor:
14827
Certificate Number