

UNITED STATES
DEPARTMENT OF THE INTERIOR
BUREAU OF LAND MANAGEMENT

RECEIVED

APPLICATION FOR PERMIT TO DRILL, DEEPEN, OR PLUG BACK

1a. Type of Work DRILL	5. Lease Number NMSF078138 Unit Reporting Number 070 Farmington, NM
1b. Type of Well GAS	6. If Indian, All. or Tribe
2. Operator BURLINGTON RESOURCES Oil & Gas Company	7. Unit Agreement Name
3. Address & Phone No. of Operator PO Box 4289, Farmington, NM 87499 (505) 326-9700	8. Farm or Lease Name Morris A Com 9. Well Number 100
4. Location of Well 1940' FSL, 1530' FWL Latitude 36° 48.6158'N, Longitude 107° 57.8195'W	10. Field, Pool, Wildcat Basin Fruitland Coal 11. Sec., Twn, Rge, Mer. (NMPM) K Sec. 14, T-30-N, R-11-W API # 30-045-31572
14. Distance in Miles from Nearest Town 2 miles to Aztec	12. County San Juan 13. State NM
15. Distance from Proposed Location to Nearest Property or Lease Line 1530'	
16. Acres in Lease	17. Acres Assigned to Well S/313.81
18. Distance from Proposed Location to Nearest Well, Drig, Compl, or Applied for on this Lease 900'	
19. Proposed Depth 2594'	20. Rotary or Cable Tools Rotary
21. Elevations (DF, FT, GR, Etc.) 5967' GR	22. Approx. Date Work will Start
23. Proposed Casing and Cementing Program See Operations Plan attached	
24. Authorized by: <u>Peggy Case</u> Regulatory/Compliance Supervisor	Date <u>3-11-03</u>

PERMIT NO.

APPROVAL DATE

APPROVED BY /s/ David J. Mankiewicz

TITLE

DATE APR 16 2003

Archaeological Report to be submitted

Threatened and Endangered Species Report to be submitted

NOTE: This format is issued in lieu of U.S. BLM Form 3160-3

Title 18 U.S.C. Section 1001, makes it a crime for any person knowingly and willfully to make to any department or agency of the United States any false, fictitious or fraudulent statements or presentations as to any matter within its jurisdiction.

This action is subject to technical and procedural review pursuant to 43 CFR 3165.3 and appeal pursuant to 43 CFR 3165.4

DRILLING OPERATIONS AUTHORIZED ARE
SUBJECT TO COMPLIANCE WITH ATTACHED
"GENERAL REQUIREMENTS".

NMOC

District II
PO Drawer DD, Artesia, NM 88211-0719

OIL CONSERVATION DIVISION
PO Box 2088
Santa Fe, NM 87504-2088

District III
1000 Rio Brazos Rd., Aztec, NM 87410

District IV
PO Box 2088, Santa Fe, NM 87504-2088

☐ AMENDED REPORT

WELL LOCATION AND ACREAGE DEDICATION PLAT

*API Number 30-045- 31572		*Pool Code 71629	*Pool Name Basin Fruitland Coal
*Property Code 7328	*Property Name MORRIS A COM		*Well Number 100
*GRID No. 14538	*Operator Name BURLINGTON RESOURCES OIL & GAS COMPANY, LP		*Elevation 5967'

¹⁰ Surface Location

UL or lot no.	Section	Township	Range	Lot Idn	Feet from the	North/South line	Feet from the	East/West line	County
K	14	30N	11W		1940	SOUTH	1530	WEST	SAN JUAN

¹¹ Bottom Hole Location If Different From Surface

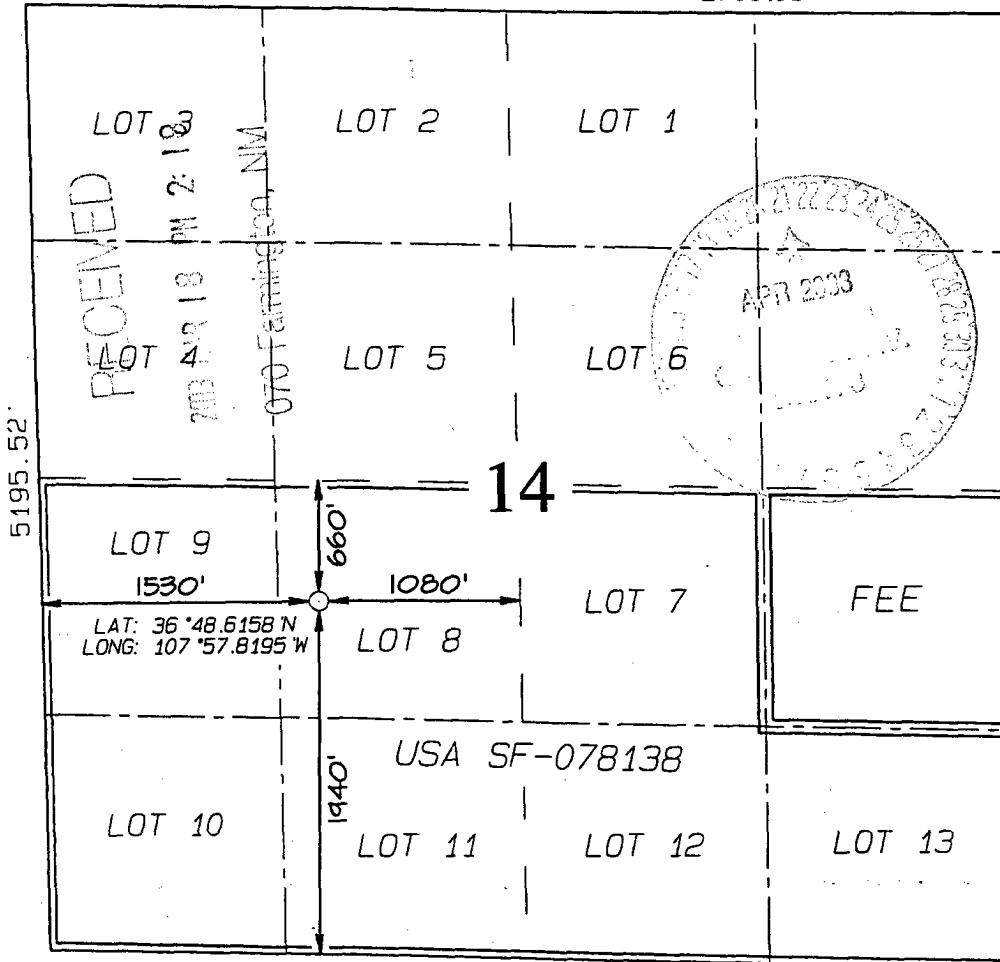
UL or lot no.	Section	Township	Range	Lot Idn	Feet from the	North/South line	Feet from the	East/West line	County

¹² Dedicated Acres S/313.81	¹³ Joint or Infill	¹⁴ Consolidation Code	¹⁵ Order No.
---	-------------------------------	----------------------------------	-------------------------

NO ALLOWABLE WILL BE ASSIGNED TO THIS COMPLETION UNTIL ALL INTERESTS HAVE BEEN CONSOLIDATED
OR A NON-STANDARD UNIT HAS BEEN APPROVED BY THE DIVISION

2621.52'

2700.06'



¹⁷ OPERATOR CERTIFICATION

I hereby certify that the information contained herein is true and complete to the best of my knowledge and belief

Peggy Cole
Signature

Peggy Cole
Printed Name

Regulatory Supervisor

Title

3-11-03
Date

Date

¹⁸ SURVEYOR CERTIFICATION

I hereby certify that the well location shown on this plat was plotted from field notes of actual surveys made by me or under my supervision, and that the same is true and correct to the best of my belief.

Survey Date: JANUARY 15, 2003

Signature and Seal of Professional Surveyor



JASON C. EDWARDS
Certificate Number 15269

OPERATIONS PLAN

Well Name: Morris A Com #100
Location: 1940' FSL, 1530' FWL Section 14, T-30-N, R-11-W
San Juan County, NM
Formation: Basin Fruitland Coal
Elevation: 5967' GR

Formation:	Top	Bottom	Contents
Surface	San Jose	1008'	
Ojo Alamo	1008'	1113'	aquifer
Kirtland	1113'	2010'	
Fruitland	2010'	2388'	gas
B/Basal Coal	2388'	2394'	gas
Pictured Cliffs	2394'	2594'	gas
Total Depth	2594'		

Logging Program: Cased hole: GR/DEN/CAL - TD to surface

Mudlog: none

Coring Program: none

Mud Program:

Interval	Type	Weight	Vis.	Fluid Loss
0- 120'	Spud	8.4-9.0	40-50	no control
120-2594'	Non-dispersed	8.4-9.5	30-60	no control

Casing Program (as listed, the equivalent, or better):

Hole Size	Depth Interval	Csg. Size	Wt.	Grade
8 3/4"	0' - 120'	7"	20.0#	J-55
6 1/4"	0' - 2594'	4 1/2"	10.5#	J-55

Tubing Program:

0' - 2594'	2 3/8"	4.7#	J-55
------------	--------	------	------

Float Equipment: 7" surface casing - saw tooth guide shoe. Centralizers will be run in accordance with Onshore Order #2.

4 1/2" production casing - guide shoe and self-fill float collar. Three centralizers run every other joint above shoe. Nine centralizers run every 3rd joint to the base of the Ojo Alamo @ 1113'. Two turbolizing type centralizers - one below and one into the base of the Ojo Alamo @ 1113'. Standard centralizers thereafter every fourth joint up to the base of the surface pipe.

Wellhead Equipment: 7" x 4 1/2" x 2 3/8" x 11" 2000 psi screw on independent wellhead.

Cementing:

7" surface casing - cement with 38 sx Class "B" Type III cement with 0.25 pps Celloflake and 3% calcium chloride (54 cu.ft. of slurry, 200% excess to circulate to surface). WOC 24 hours for pre-set holes or 8 hours for conventionally set holes before pressure testing or drilling out from under surface casing. Test casing to 600 psi for 30 minutes.

4 1/2" production casing - Lead w/129 sx Premium Lite cement w/3% calcium chloride, 1/4 pps Cello-flake, 5 pps LCM-1, 0.4% FL-52, and 0.4% SMS. Tail w/90 sx Type III cement w/1% calcium chloride, 1/4 pps Cello-flake, and 0.2% FL-52 (399 cu.ft. of slurry, 50% excess to circulate to surface.) If cement is not circulated to surface, a temperature survey or CBL will be run during drilling or completion operations to determine TOC.

4-1/2" production casing alternative two stage - Stage collar @ 1910'. First stage: cement with 76 sxs Type III cmt w/1% calcium chloride, 0.25 pps flocele, 0.2% fluid loss. Second stage: 138 sxs Premium Lite cmt w/3% calcium chloride, 0.25 pps Flocele, 5 pps LCM-1, 0.4% fluid loss, 0.4% SMS (399 cu.ft. of slurry, 50% excess to circulate to surface).

Note: If open hole logs are run, cement volumes will be based on 25% excess over caliper volumes.

BOP and tests:

Surface to TD - 11" 2000 psi (minimum double gate BOP stack (Reference Figure #1). Prior to drilling out surface casing, test rams to 600 psi/30 min.

Completion - 7 1/16" 2000 psi (minimum) double gate BOP stack (Reference Figure #2). Prior to completion operations, test rams and casing to 2000 psi/15 min.

From surface to TD - choke manifold (Reference Figure #3).

Pipe rams will be actuated at least once each day and blind rams actuated once each trip to test proper functioning. An upper kelly cock valve with handle and drill string safety valves to fit each drill string will be maintained and available on the rig floor.

Additional information:

- * The Fruitland Coal formation will be completed and commingled.
- * Anticipated pore pressure for the Fruitland is 570 psi.
- * This gas is dedicated.
- * The south half of Section 14 is dedicated to the Fruitland Coal.


Drilling Engineer

3/13/03
Date