

UNITED STATES
DEPARTMENT OF THE INTERIOR
BUREAU OF LAND MANAGEMENT

APPLICATION FOR PERMIT TO DRILL, DEEPEN, OR PLUG BACK

RECEIVED

| | |
|---|--|
| 1a. Type of Work DRILL | 5. Lease Number SF-078213 |
| 1b. Type of Well GAS | Unit Reporting Number 070 Farmington, NM |
| 2. Operator BURLINGTON RESOURCES Oil & Gas Company | 6. If Indian, All. or Tribe |
| 3. Address & Phone No. of Operator PO Box 4289, Farmington, NM 87499 (505) 326-9700 | 7. Unit Agreement Name |
| 4. Location of Well 950' FSL, 815' FEL Latitude 36° 47.6501'N, Longitude 108° 10.0817'W | 8. Farm or Lease Name Maddox D Federal Com |
| | 9. Well Number #2 |
| | 10. Field, Pool, Wildcat Fulcher Kutz Pictured Cliffs |
| | 11. Sec., Twn, Rge, Mer. (NMPM) Sec. 23, T30N, R13W |
| | API # 30-045-32252 |
| 14. Distance in Miles from Nearest Town 1.3 miles to Pinon Hills Blvd, Farmington | 12. County San Juan |
| | 13. State NM |
| 15. Distance from Proposed Location to Nearest Property or Lease Line 815' | |
| 16. Acres in Lease | 17. Acres Assigned to Well PC 160 SE 1/4 |
| 18. Distance from Proposed Location to Nearest Well, Drig, Compl, or Applied for on this Lease 21' | |
| 19. Proposed Depth 2073' | 20. Rotary or Cable Tools Rotary |
| 21. Elevations (DF, FT, GR, Etc.) 5831' GR | 22. Approx. Date Work will Start |
| 23. Proposed Casing and Cementing Program See Operations Plan attached | |
| 24. Authorized by: <u>Joni Clark</u> Regulatory Specialist | <u>2/9/04</u> Date |

PERMIT NO. _____ APPROVAL DATE _____
APPROVED BY DM TITLE _____ DATE 4-23-04

Archaeological Report attached

Threatened and Endangered Species Report attached

NOTE: This format is issued in lieu of U.S. BLM Form 3160-3

Title 18 U.S.C. Section 1001, makes it a crime for any person knowingly and willfully to make to any department or agency of the United States any false, fictitious or fraudulent statements or presentations as to any matter within its jurisdiction.

NO HPA NOTIFICATION REQUIRED UNDER ORDER R-8768F.

This action is subject to technical and
procedural review pursuant to 43 CFR 3165.3
and appeal pursuant to 43 CFR 3165.4

NMOCED

OPERATIONS AND PLANS ARE
SUBJECT TO COMPLIANCE WITH ATTACHED
"GENERAL REQUIREMENTS".

DISTRICT I
1625 N. French Dr., Hobbs, N.M. 88240

State of New Mexico
Energy, Minerals & Natural Resources Department

Form C-102
Revised August 15, 2000

DISTRICT II
611 South First, Artesia, N.M. 88210

DISTRICT III
1000 Rio Brazos Rd., Artec, N.M. 87410

DISTRICT IV
2040 South Pacheco, Santa Fe, NM 87505

OIL CONSERVATION DIVISION
2040 South Pacheco
Santa Fe, NM 87505

Submit to Appropriate District Office
State Lease - 4 Copies
Fee Lease - 3 Copies

☐ AMENDED REPORT

WELL LOCATION AND ACREAGE DEDICATION PLAT

| | | | |
|--------------------------------|---|---------------------|--|
| *API Number 30-039 45-32252 | | *Pool Code 77200 | *Pool Name Fulcher Kutz Pictured Cliffs |
| *Property Code 7280 | *Property Name MADDOX D FEDERAL COM | | *Well Number 2 |
| *OGRID No. 14538 | *Operator Name BURLINGTON RESOURCES OIL AND GAS COMPANY LP | | *Elevation 5831' |

¹⁰ Surface Location

| UL or lot no. | Section | Township | Range | Lot Idn | Feet from the | North/South line | Feet from the | East/West line | County |
|---------------|---------|----------|-------|---------|---------------|------------------|---------------|----------------|----------|
| P | 23 | 30-N | 13-W | | 950' | SOUTH | 815' | EAST | SAN JUAN |

¹¹ Bottom Hole Location If Different From Surface

| UL or lot no. | Section | Township | Range | Lot Idn | Feet from the | North/South line | Feet from the | East/West line | County |
|-------------------------------|---------|----------|-------|---------|------------------|------------------|---------------------|----------------|------------|
| *Dedicated Acres PC SE/160 | | | | | *Joint or Infill | | *Consolidation Code | | *Order No. |

NO ALLOWABLE WILL BE ASSIGNED TO THIS COMPLETION UNTIL ALL INTERESTS HAVE BEEN CONSOLIDATED
OR A NON-STANDARD UNIT HAS BEEN APPROVED BY THE DIVISION

16

| | | | | | |
|---|--|--|--|--------------------------------|--|
| RECEIVED 2004 MAR 13 PM 2:15 OYO Fulcher Kutz, NM | | APR 2004 RECEIVED OIL CONSERV. DIV. DIST. 3 | | FD 3 1/4" B.L.M. BC 1952 | |
| 23 | | LAT: 36°47.6501' N. (NAD 27) LONG: 108°10.0817' W. (NAD 27) | | USA SF-078213 | |
| FD 3 1/4" B.L.M. BC 1952 | | N 89-48-00 E 2623.44' (M) | | FD 3 1/4" B.L.M. BC 1952 | |
| 950' | | N 00-24-05 W 2650.90' (M) | | 815' | |

¹⁷ OPERATOR CERTIFICATION
I hereby certify that the information contained herein is true and complete to the best of my knowledge and belief
Frances Bond
Signature
Frances Bond
Printed Name
Regulatory Assistant
Title
1-30-04
Date

¹⁸ SURVEYOR CERTIFICATION
I hereby certify that the well location shown on this plat was plotted from field notes of actual surveys made by me or under my supervision, and that the same is true and correct to the best of my belief.
10-24-03
Date of Survey
Signature DAVID A. JOHNSON
DAVID A. JOHNSON
NEW MEXICO
REGISTERED PROFESSIONAL SURVEYOR
14827
Certificate Number

OPERATIONS PLAN

Well Name: Maddox D Federal Com 2
Location: 950' FSL, 815' FEL, Section 23, T-30-N, R-13-W
San Juan County, New Mexico
Latitude 36° 47.65'N, Longitude 108° 10.08'W
Formation: Fulcher Kutz Pictured Cliffs
Elevation: 5831' GL

| Formation: | Top | Bottom | Contents |
|--------------------|--------------|--------|----------|
| Surface | San Jose | 328' | |
| Ojo Alamo | 328' | 453' | aquifer |
| Kirtland | 453' | 1578' | gas |
| Fruitland Coal | 1578' | 1873' | gas |
| Pictured Cliffs | 1873' | 2031' | gas |
| Lewis | 2031' | | |
| Total Depth | 2073' | | |

Logging Program:

Open hole - none
cased hole - CBL-CCL-GR TD to surface

Coring Program: None

Mud Program:

| Interval | Type | Weight | Vis. | Fluid Loss |
|-----------|------|---------|-------|------------|
| 0- 120' | Spud | 8.4-9.0 | 40-50 | no control |
| 120-2073' | FW | 8.4-9.0 | 32-45 | no control |

Casing Program (as listed, equivalent, or better):

| Hole Size | Depth Interval | Csg. Size | Wt. | Grade |
|-----------|----------------|-----------|-------|-------|
| 8 3/4" | 0 - 120' | 7" | 20.0# | J-55 |
| 6 1/4" | 0 - 2073' | 4 1/2" | 10.5# | J-55 |

Tubing Program:

| | | | |
|-----------|--------|------|------|
| 0' -2073' | 2 3/8" | 4.7# | J-55 |
|-----------|--------|------|------|

Float Equipment: 7" surface casing - saw tooth guide shoe.
Centralizers will be run in accordance with Onshore Order #2.

4 1/2" production casing - float shoe on bottom. Standard centralizers run every third joint above shoe to the base of the Ojo Alamo @ 453'. Two turbolizing type centralizers - one below and one into the base of the Ojo Alamo @ 453'. Standard centralizers thereafter every fourth joint up to the base of the surface pipe.

Wellhead Equipment: 7" x 4 1/2" x 2 3/8" 2000 psi screw on independent wellhead.

Cementing:

7" surface casing pre-set drilled- cement with 34 sxs Type I, II cement with 20% flyash mixed at 14.5 ppg, 1.61 cu ft per sack yield. (54 cu. ft.- bring cement to surface). Wait on cement for 24 hours for pre-set holes before pressure testing or drilling out from under surface.

7" surface casing conventionally drilled - cement with 42 sxs Type III cement with 0.25 pps Celloflake, 3% calcium chloride. (54 cu ft-200% excess, bring cement to surface). Wait on cement appropriate time until cement achieves 250 psi compressive strength at 60 degrees F. prior to nipple up of BOPE. Wait on cement for 8 hrs for conventionally set holes before pressure testing or drilling out from under surface.

Saw tooth guide shoe on bottom. Bowspring centralizers will be run in accordance with Onshore Order #2.

4 1/2" production casing - Lead w/89 sx Premium Lite cement w/3% calcium chloride, 0.25 pps celloflake, 5 pps LCM-1, 0.4% fluid loss, 0.4% sodium metasilicate. Tail w/90 sx Type III cement w/1% calcium chloride, 0.25 pps celloflake, and 0.2% fluid loss (315 cu.ft. of slurry, 50% excess to circulate to surface).

Note: If open hole logs are run, cement volumes will be based on 25% excess over caliper volumes.

BOP and tests:

Surface to TD - 7 1/16" 2000 psi (minimum) single spherical annular BOP stack (Reference Figure #1). Prior to drilling out surface casing, test BOP and casing to 400 psi/30 min.

Completion - 6" 2000 psi (minimum) double gate BOP stack (Reference Figure #2). Prior to completion operations, test BOP and casing to 2000 psi/15 min.

From surface to TD - choke manifold (Reference Figure #3).

Pipe rams will be actuated at least once each day and blind rams actuated once each trip to test proper functioning. An upper kelly cock valve with handle and drill string safety valves to fit each drill string will be maintained and available on the rig floor.

Additional information:

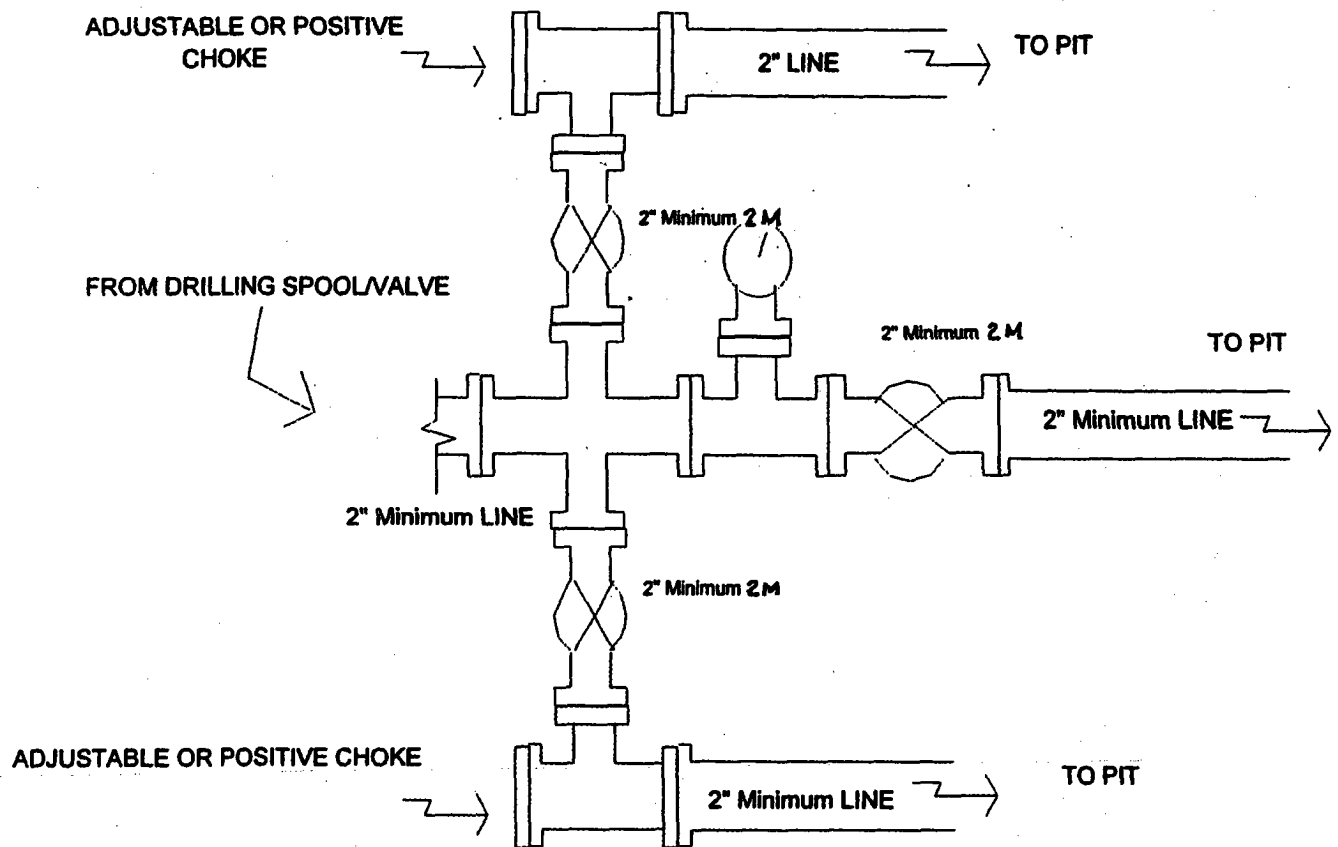
- * The Pictured Cliffs formation will be completed.
- * Anticipated pore pressure for the Pictured Cliffs is 500 psi.
- * This gas is dedicated.
- * SE corner of Section 23 is dedicated to the Fulcher Kutz Pictured Cliffs.

Brian Teller

Drilling Engineer 2-25-04

BURLINGTON RESOURCES

Drilling Rig Choke Manifold Configuration 2000 psi System



Choke manifold installation from Surface Casing
Point to Total Depth. 2,000 psi working pressure
equipment with two chokes.

Drilling Rig

2000 psi BOP System

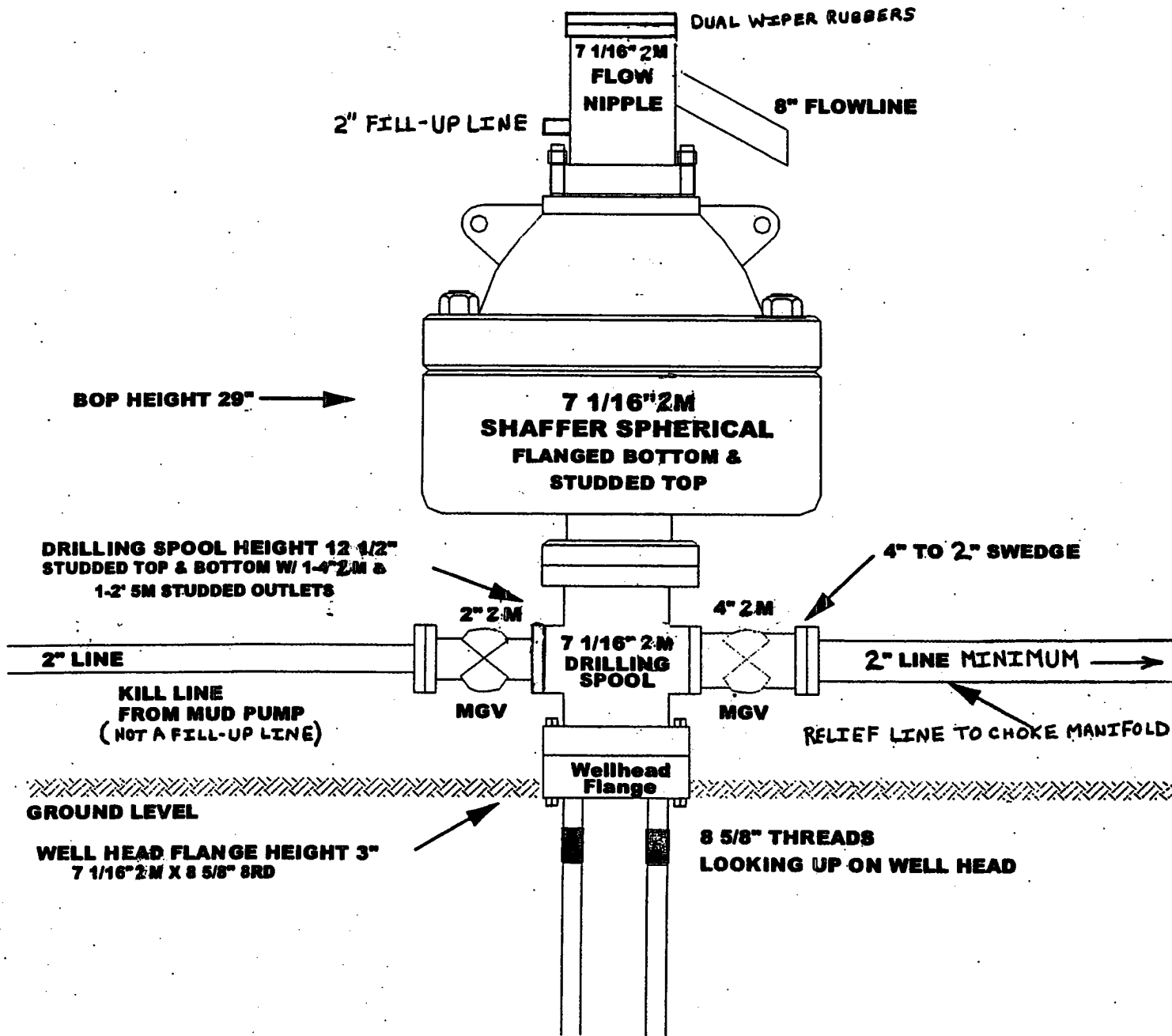
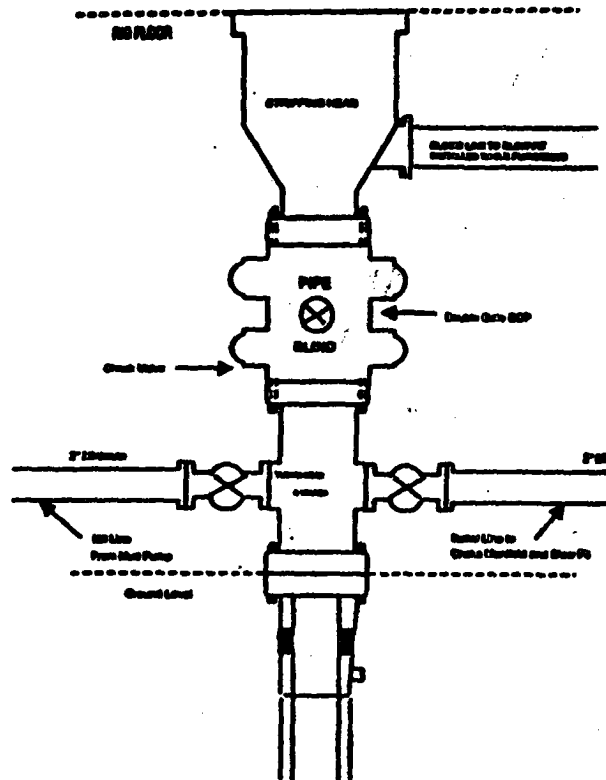


FIGURE 1

BURLINGTON RESOURCES

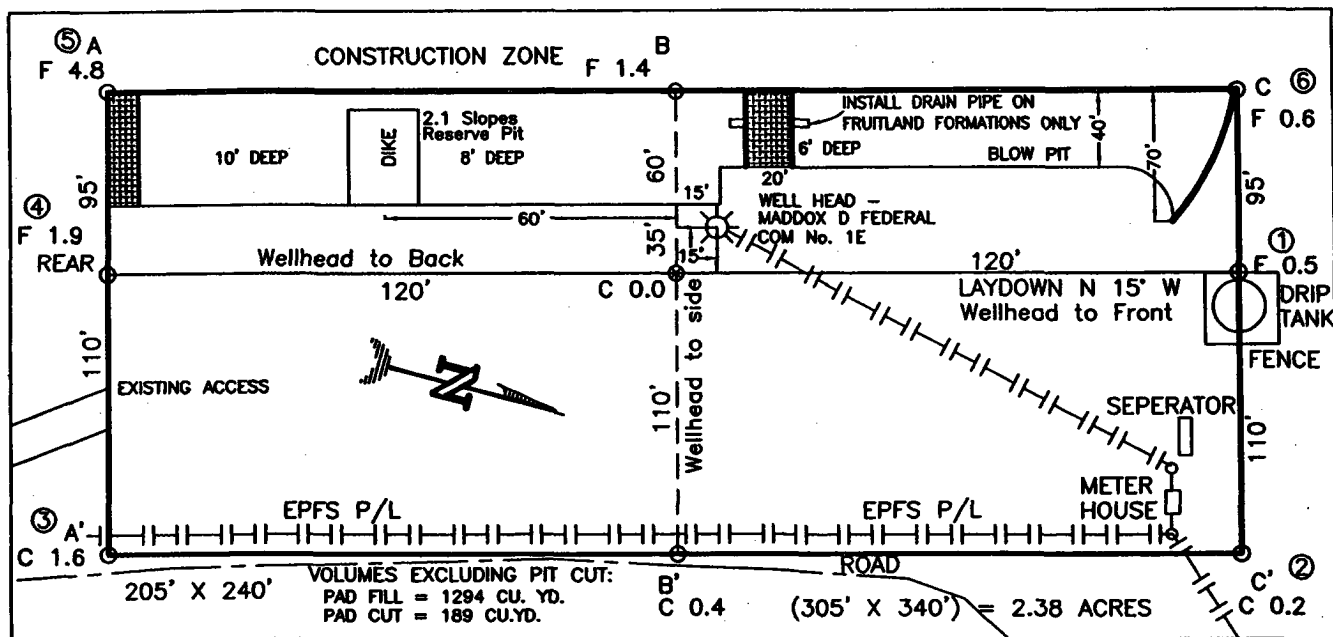
Completion/Workover Rig BOP Configuration 2,000 psi System



Minimum BOP Installation for all Completion/Workover Operations. 7-1/16" bore, 2000 psi minimum working pressure double gate BOP to be equipped with blind and pipe rams. A stripping head to be installed on the top of the BOP. All BOP equipment is 2000 psi working pressure or greater excluding 500 psi stripping head.

Figure #2

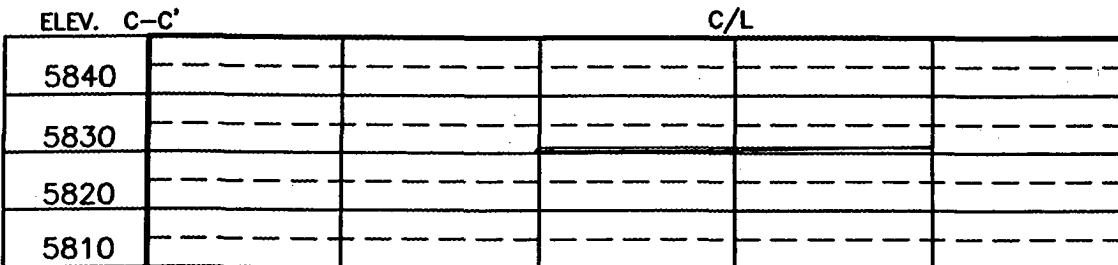
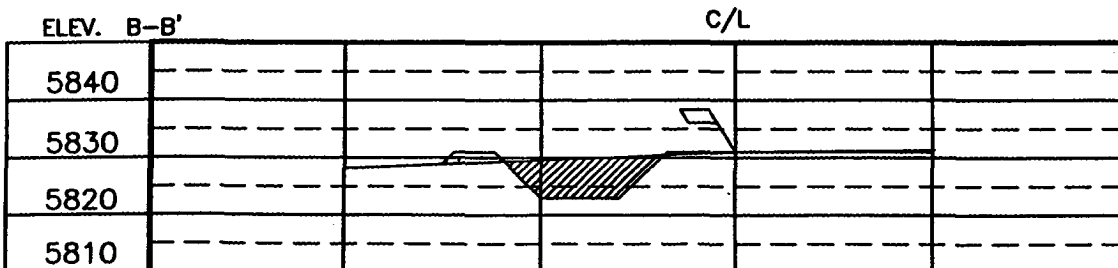
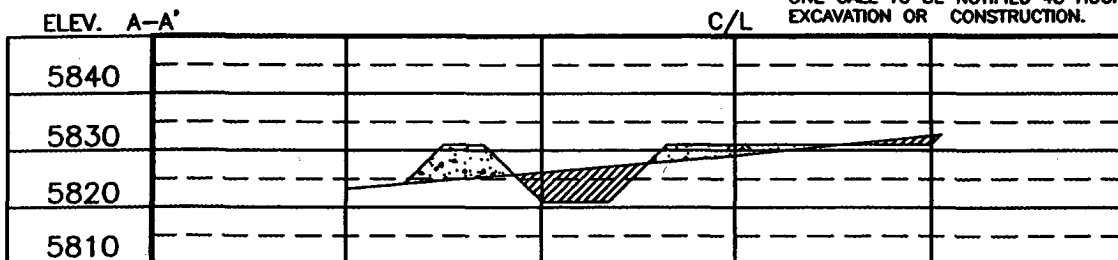
BURLINGTON RESOURCES OIL & GAS COMPANY LP
MADDOX D FEDERAL COM No. 2, 950 FSL 815 FEL
SECTION 23, T-30-N, R-13-W, N.M.P.M., SAN JUAN COUNTY, NEW MEXICO
GROUND ELEVATION: 5831, DATE: SEPTEMBER 30, 2003



RESERVE PIT DIKE: TO BE 8' ABOVE DEEP SIDE (OVERFLOW - 3' WIDE AND 1' ABOVE SHALLOW SIDE).
 BLOW PIT: OVERFLOW PIPE HALFWAY BETWEEN TOP AND BOTTOM AND TO EXTEND OVER PLASTIC LINER AND INTO BLOW PIT.

NOTE:

DAGGETT ENTERPRISES, INC. IS NOT LIABLE FOR
 UNDERGROUND UTILITIES OR PIPELINES. NEW MEXICO
 ONE CALL TO BE NOTIFIED 48 HOURS PRIOR TO
 EXCAVATION OR CONSTRUCTION.



NOTE: CONTRACTOR SHOULD CALL ONE-CALL FOR LOCATION OF ANY MARKED OR UNMARKED BURIED PIPELINES OR CABLES
 ON WELL PAD AND OR ACCESS ROAD AT LEAST TWO (2) WORKING DAYS PRIOR TO CONSTRUCTION.

DRAWN BY: A.G.

ROW#: BR490

CADFILE: BR490CF8

DATE: 10/23/03

Daggett Enterprises, Inc.
 Surveying and Oil Field Services
 P. O. Box 15068 Farmington, NM 87401
 Phone (505) 328-1772 Fax (505) 328-6019

