

District I  
1625 N. French Dr., Hobbs, NM 88240  
District II  
1301 W. Grand Avenue, Artesia, NM 88210  
District III  
1000 Rio Brazos Road, Aztec, NM 87410  
District IV  
1220 S. St. Francis Dr., Santa Fe, NM 87505

State of New Mexico  
Energy Minerals and Natural Resources

Oil Conservation Division  
1220 South St. Francis Dr.  
Santa Fe, NM 87505

Form C-101  
March 4, 2004

Submit to appropriate District Office  
State Lease - 6 Copies  
Fee Lease - 5 Copies

☐ AMENDED REPORT

**APPLICATION FOR PERMIT TO DRILL, RE-ENTER, DEEPEN, PLUGBACK, OR ADD A ZONE**

<sup>1</sup> Operator Name and Address Dugan Production Corp. 709 East Murray Drive Farmington, New Mexico 87499 (505) 325-1821		<sup>2</sup> OGRID Number 006515
		<sup>3</sup> API Number 30 - 045-32361
<sup>4</sup> Property Code 33832	<sup>5</sup> Property Name Pseudo Fruitland Coal Mine Gas	<sup>6</sup> Well No. #2

<sup>7</sup> Surface Location

UL or lot no.	Section	Township	Range	Lot Idn	Feet from the	North/South line	Feet from the	East/West line	County
G	35	30N	15W		2,100	North	1950	East	San Juan

<sup>8</sup> Proposed Bottom Hole Location If Different From Surface

UL or lot no.	Section	Township	Range	Lot Idn	Feet from the	North/South line	Feet from the	East/West line	County
---------------	---------	----------	-------	---------	---------------	------------------	---------------	----------------	--------

<sup>9</sup> Proposed Pool 1 Pseudo Fruitland Coal Mine Gas Pool	<sup>10</sup> Proposed Pool 2
---	-------------------------------

**Drilling Pit Location and Other Information**

UL or lot no.	Section	Township	Range	Lot Idn	Feet from the	North/South line	Feet from the	East/West line	County
Depth to ground water			Greater Than 100'			Distance from nearest fresh water well			Distance from nearest surface water
2-1/2 miles SW, SJR									
<sup>11</sup> Work Type Code		<sup>12</sup> Well Type Code		<sup>13</sup> Cable/Rotary		<sup>14</sup> Lease Type Code		<sup>15</sup> Ground Level Elevation	
<sup>16</sup> Multiple		<sup>17</sup> Proposed Depth		<sup>18</sup> Formation		<sup>19</sup> Contractor		<sup>20</sup> Spud Date	

<sup>21</sup> Proposed Casing and Cement Program

Hole Size	Casing Size	Casing weight/foot	Setting Depth	Sacks of Cement	Estimated TOC
<b>** Note: No pits will be constructed or used for this project.</b>					

<sup>22</sup> Describe the proposed program. If this application is to DEEPEN or PLUG BACK, give the data on the present productive zone and proposed new productive zone. Describe the blowout prevention program, if any. Use additional sheets if necessary. Transfer Point for Fruitland Coal Mine gas. Upstream of this point, San Juan Coal Company will collect and deliver gas from the San Juan Underground Mine area to the Transfer Point. Downstream of this point, DPC will transport the gas to a sales point on the Turk's Toast Gathering System

<sup>23</sup> I hereby certify that the information given above is true and complete to the best of my knowledge and belief. I further certify that the drilling pit will be constructed according to NMOCD guidelines ☐ a general permit ☐ or an (attached) alternative OCD-approved plan ☐.

Signature: *Kurt Fagrelis*

Printed name: Kurt Fagrelis

Title: Geologist

E-mail Address: kfagrelis@duganproduction.com

Date: May 25, 2004

Phone: (505) 325-1821

OIL CONSERVATION DIVISION

Approved by:

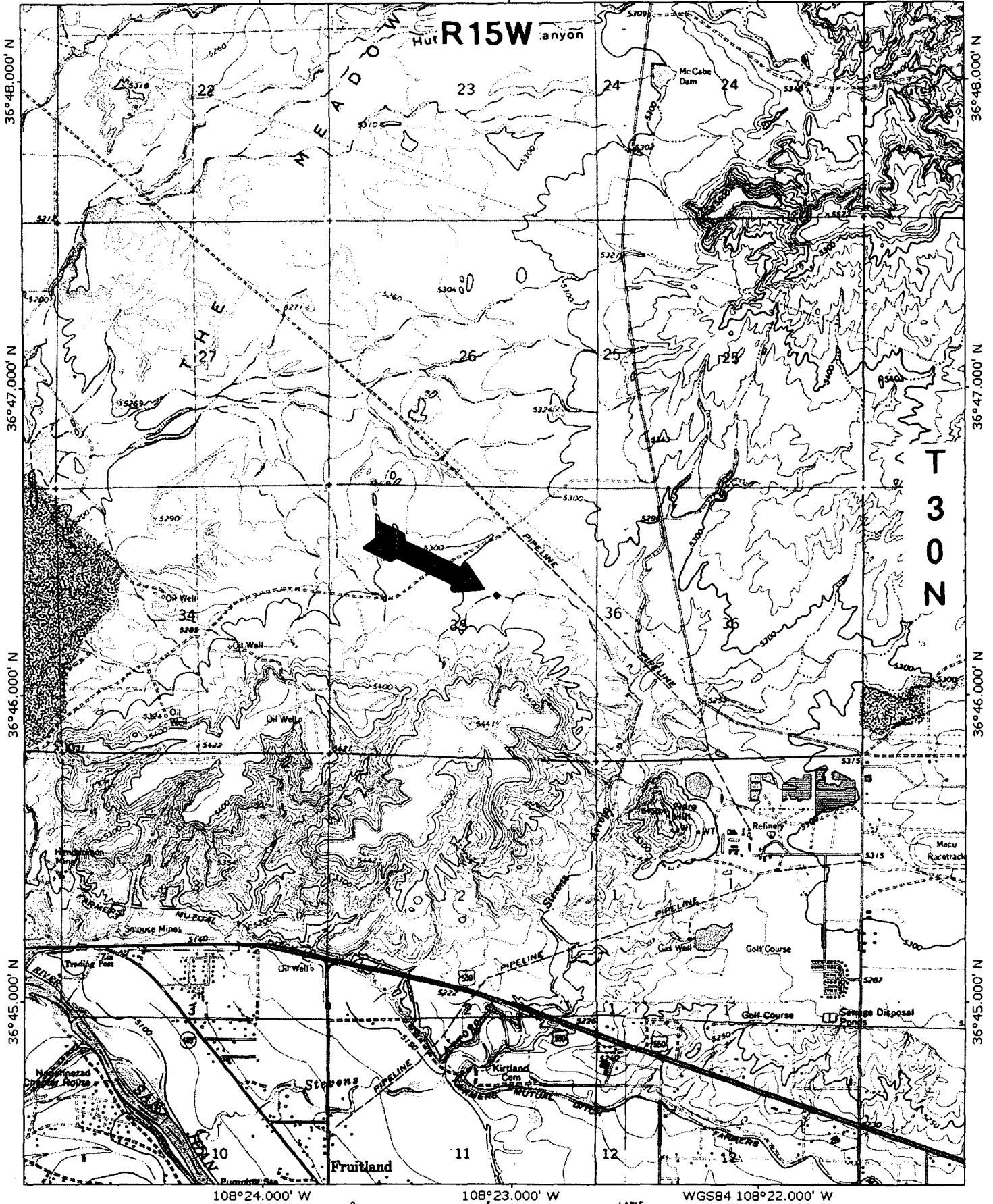
Title: DEPUTY OIL & GAS INSPECTOR, DIST. #2

Approval Date: MAY 26 2004

Expiration Date: MAY 26 2005

Conditions of Approval:

Attached ☐



TN/MN  
11°

0 1000 FEET 0 500 1000 METERS

Printed from TOPOI ©2001 National Geographic Holdings (www.topo.com)