

UNITED STATES
DEPARTMENT OF THE INTERIOR
BUREAU OF LAND MANAGEMENT

RECEIVED

APPLICATION FOR PERMIT TO DRILL, DEEPEN, OR PLUG BACK

2004 JUN 26 PM 3:03

1a. Type of Work DRILL	5. Lease Number SF-079493-A Unit Reporting Number MV-8910010510 DK-891001051B	
1b. Type of Well GAS	6. If Indian, All. or Tribe	
2. Operator BURLINGTON RESOURCES Oil & Gas Company	7. Unit Agreement Name San Juan 27-5 Unit	
3. Address & Phone No. of Operator PO Box 4289, Farmington, NM 87499 (505) 326-9700	8. Farm or Lease Name San Juan 27-5 Unit 9. Well Number #144N	
4. Location of Well 675' FSL, 390' FWL Latitude 36° 31.5067'N, Longitude 107° 20.0898'W	10. Field, Pool, Wildcat Blanco Mesaverde/Basin Dakota 11. Sec., Twn, Rge, Mer. (NMPM) M Sec. 35, T27N, R05W API # 30-039-27641	
14. Distance in Miles from Nearest Town 42.6 miles to Blanco Post Office	12. County Rio Arriba	13. State NM
15. Distance from Proposed Location to Nearest Property or Lease Line 390'		
16. Acres in Lease	17. Acres Assigned to Well 316.94 W/2 - MV 320 S/2 - DK	
18. Distance from Proposed Location to Nearest Well, Drlg, Compl, or Applied for on this Lease 1624'		
19. Proposed Depth 7756'	20. Rotary or Cable Tools Rotary	
21. Elevations (DF, FT, GR, Etc.) 6597' GR	22. Approx. Date Work will Start	
23. Proposed Casing and Cementing Program See Operations Plan attached		
24. Authorized by: <u>Joni Clark</u> Regulatory Specialist	<u>2/24/04</u> Date	

PERMIT NO.

APPROVAL DATE

APPROVED BY D. Mantecón

TITLE AFM

DATE 6-10-04

Archaeological Report attached

Threatened and Endangered Species Report attached

NOTE: This format is issued in lieu of U.S. BLM Form 3160-3

Title 18 U.S.C. Section 1001, makes it a crime for any person knowingly and willfully to make to any department or agency of the United States any false, fictitious or fraudulent statements or presentations as to any matter within its jurisdiction.

DISTRICT I
1625 N. French Dr., Hobbs, N.M. 88240

State of New Mexico
Energy, Minerals & Natural Resources Department

Form C-102
Revised August 15, 2000

DISTRICT II
611 South First, Artesia, N.M. 88210

DISTRICT III
1000 Rio Brazos Rd., Aztec, N.M. 87410

DISTRICT IV
2040 South Pacheco, Santa Fe, NM 87505

OIL CONSERVATION DIVISION
2040 South Pacheco
Santa Fe, NM 87505

Submit to Appropriate District Office
State Lease - 4 Copies
Fee Lease - 3 Copies

☐ AMENDED REPORT

WELL LOCATION AND ACREAGE DEDICATION PLAT

¹ API Number 30-039- <u>27641</u>	² Pool Code 72319/71599	³ Pool Name Blanco Mesaverde/Basin Dakota
⁴ Property Code 7454	⁵ Property Name SAN JUAN 27-5 UNIT	⁶ Well Number 144N
⁷ OGRIID No. 14538	⁸ Operator Name BURLINGTON RESOURCES OIL & GAS COMPANY LP	⁹ Elevation 6597'

¹⁰ Surface Location

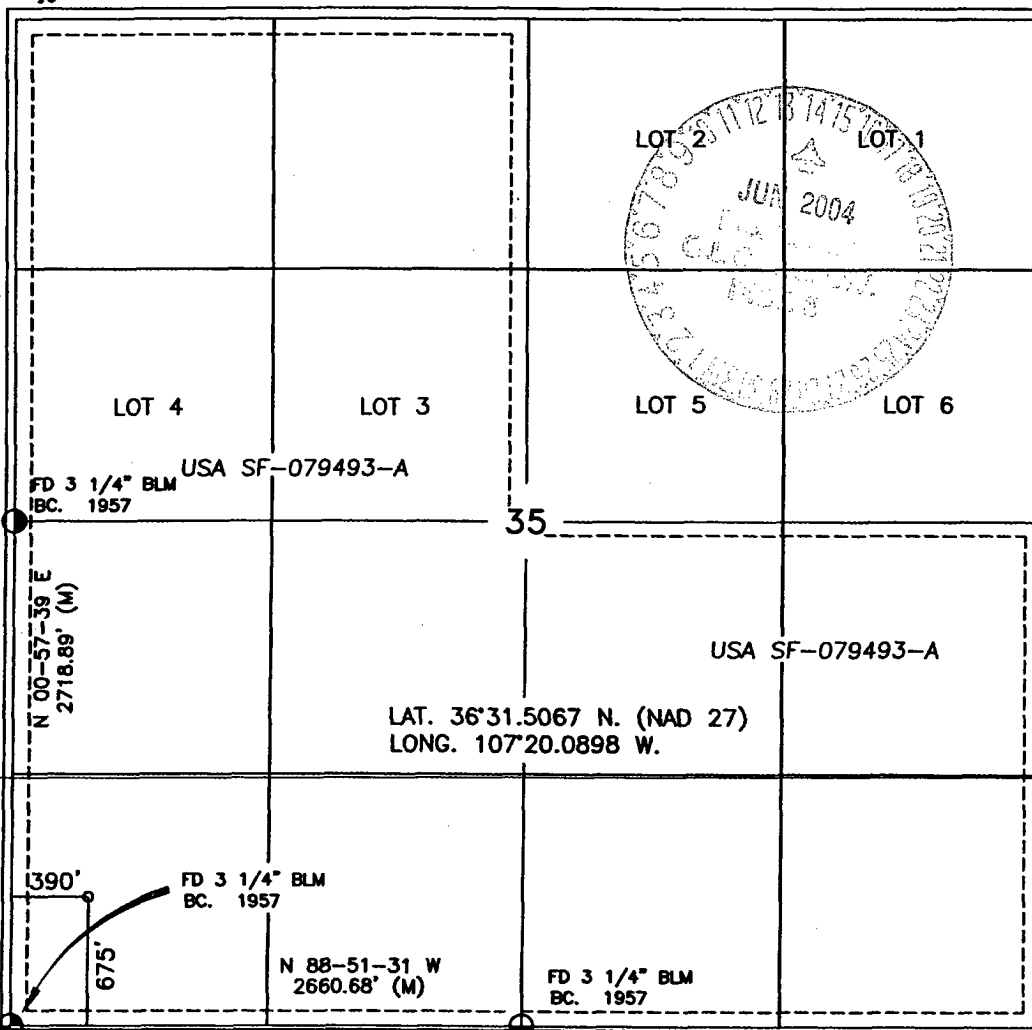
UL or lot no. M	Section 35	Township 27-N	Range 5-W	Lot Idn	Feet from the 675	North/South line SOUTH	Feet from the 390	East/West line WEST	County RIO ARriba
--------------------	---------------	------------------	--------------	---------	----------------------	---------------------------	----------------------	------------------------	----------------------

¹¹ Bottom Hole Location If Different From Surface

UL or lot no.	Section	Township	Range	Lot Idn	Feet from the	North/South line	Feet from the	East/West line	County
¹² Dedicated Acres MV-W/316.94 DK-S/320			¹³ Joint or Infill		¹⁴ Consolidation Code		¹⁵ Order No.		

NO ALLOWABLE WILL BE ASSIGNED TO THIS COMPLETION UNTIL ALL INTERESTS HAVE BEEN CONSOLIDATED
OR A NON-STANDARD UNIT HAS BEEN APPROVED BY THE DIVISION

16



17 OPERATOR CERTIFICATION

I hereby certify that the information contained herein
is true and complete to the best of my knowledge and
belief.

Joni Clark
Signature

Joni Clark
Printed Name

Regulatory Specialist
Title

2/24/04
Date

18 SURVEYOR CERTIFICATION

I hereby certify that the well location shown on this plat
was plotted from field notes of actual surveys made by
me or under my supervision, and that the same is true
and correct to the best of my belief.

9-15-03
Date of Survey
Signature and Seal of Professional Surveyor:

14827
Certificate Number

OPERATIONS PLAN

Well Name: San Juan 27-5 Unit #144N
Location: 675' FSL, 390' FWL, Sec 35, T-27-N, R-5-W
Rio Arriba County, NM
Latitude 36° 31.5067'N, Longitude 107° 20.0898'W
Formation: Blanco Mesaverde/Basin Dakota

Total Depth: 7756'

Logging Program: See San Juan 27-5 Unit Master Operations Plan

Mud Program: See San Juan 27-5 Unit Master Operations Plan

Casing Program (as listed, the equivalent, or better):

<u>Hole Size</u>	<u>Depth Interval</u>	<u>Csg. Size</u>	<u>Wt.</u>	<u>Grade</u>	<u>Cement</u>
12 1/4"	0' - 120'	9 5/8"	32.3#	H-40	113 cu.ft.
8 3/4"	0' - 3609'	7"	20.0#	J-55	808 cu.ft.
6 1/4"	0' - 7756'	4 1/2"	10.5#	J-55	565 cu.ft.

Tubing Program: See San Juan 27-5 Unit Master Operations Plan

- The Mesaverde and Dakota formations will be completed and commingled.
- The west half of Section 35 is dedicated to the Mesaverde and the south half of the Dakota formation in this well.
- Gas is dedicated.

Sean Corrigan
Drilling Engineer

February 25, 2004
Date

MULTI-POINT SURFACE USE PLAN

San Juan 27-5 Unit #144N

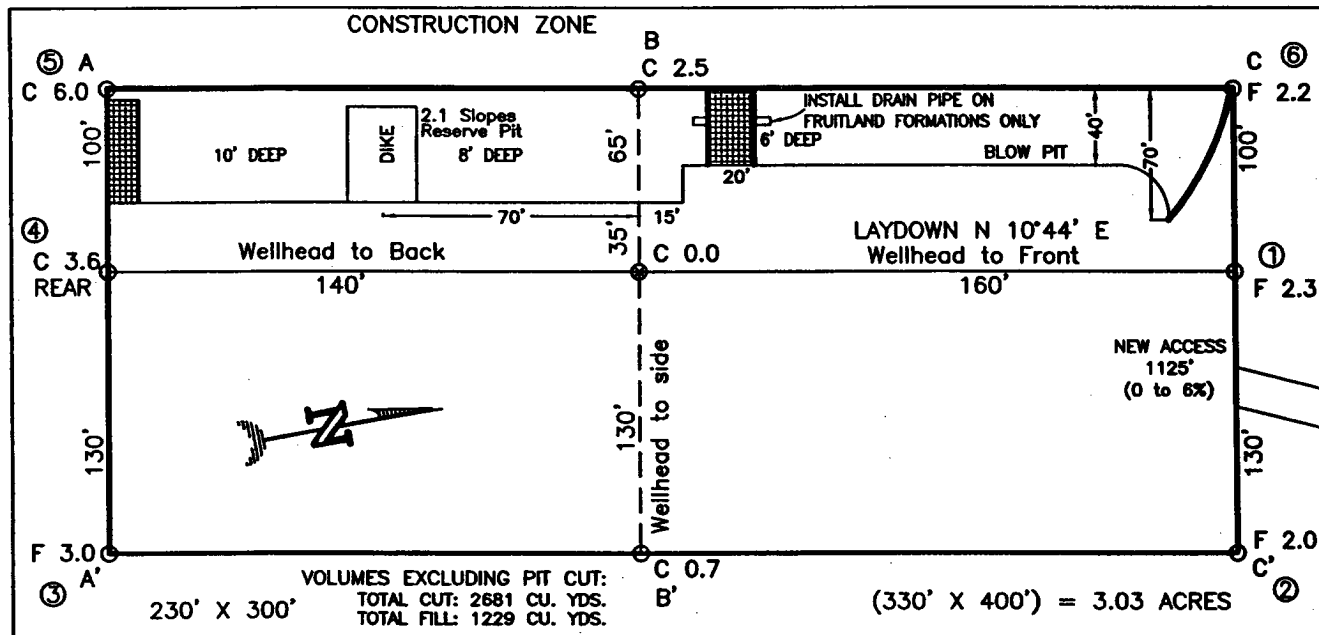
See San Juan 27-5 Unit Master Multi-point Surface Use Plan

- Anticipated pipeline facilities as shown on the attached plat from Williams Field Services.
- 1125' of new road will be built.
- Water supply from the Candelaria Water Hole located SE/4 Section 29, T-27-N, R-5-W, New Mexico.
- Surface Ownership: Bureau of Land Management
- Build diversion ditch above cut slope between corner #3 and #5 draining east.
- Build diversion ditch above cut between corner #5 and #6.
- Build a silt trap where access road crosses wash with a culvert installed in spillway.
- Archaeological Resources: See Archaeological Survey technical report #2003-SJC-206 from San Juan College.

Joni Clark
Regulatory Specialist

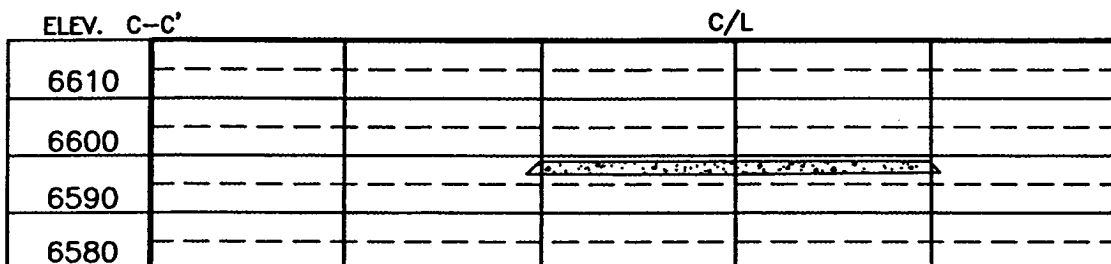
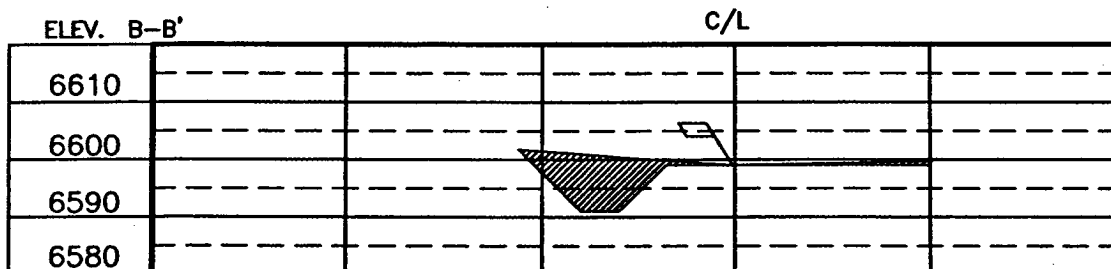
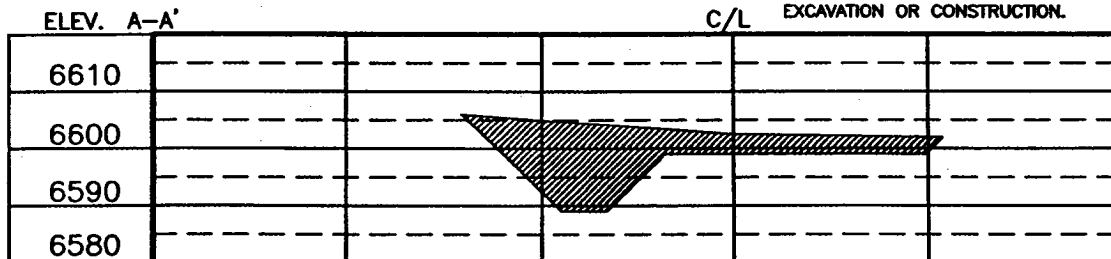
2/24/04
Date

BURLINGTON RESOURCES OIL & GAS COMPANY LP
SAN JUAN 27-5 UNIT No. 144N, 675 FSL 390 FWL
SECTION 35, T-27-N, R-5-W, N.M.P.M., RIO ARriba COUNTY, NEW MEXICO
GROUND ELEVATION: 6597, DATE: SEPTEMBER 8, 2003



RESERVE PIT DIKE: TO BE 8' ABOVE DEEP SIDE (OVERFLOW - 3' WIDE AND 1' ABOVE SHALLOW SIDE).
 BLOW PIT: OVERFLOW PIPE HALFWAY BETWEEN TOP AND BOTTOM AND TO EXTEND OVER PLASTIC LINER AND INTO BLOW PIT.

NOTE: DAGGETT ENTERPRISES, INC. IS NOT LIABLE FOR UNDERGROUND UTILITIES OR PIPELINES. NEW MEXICO ONE CALL TO BE NOTIFIED 48 HOURS PRIOR TO EXCAVATION OR CONSTRUCTION.



NOTE: CONTRACTOR SHOULD CALL ONE-CALL FOR LOCATION OF ANY MARKED OR UNMARKED BURIED PIPELINES OR CABLES ON WELL PAD AND OR ACCESS ROAD AT LEAST TWO (2) WORKING DAYS PRIOR TO CONSTRUCTION.

DRAWN BY: B.L.

ROW#: BR469

CADFILE: BR469CF8

DATE: 9/12/03

Daggett Enterprises, Inc.
 Surveying and Oil Field Services
 P. O. Box 15088 Farmington, NM 87401
 Phone (505) 326-1772 Fax (505) 326-6019