

UNITED STATES
DEPARTMENT OF THE INTERIOR
BUREAU OF LAND MANAGEMENT

APPLICATION FOR PERMIT TO DRILL, DEEPEN, OR PLUG BACK

1a. Type of Work DRILL	5. Lease Number SF-078741 Unit Reporting Number	
1b. Type of Well GAS	6. If Indian, All. or Tribe	
2. Operator BURLINGTON RESOURCES Oil & Gas Company	7. Unit Agreement Name San Juan 30-6 Unit	
3. Address & Phone No. of Operator PO Box 4289, Farmington, NM 87499 (505) 326-9700	8. Farm or Lease Name San Juan 30-6 Unit 9. Well Number #489S	
4. Location of Well 1005' FNL, 365' FWL Latitude 36° 48.1560'N, Longitude 107° 25.2823'W	10. Field, Pool, Wildcat Basin Fruitland Coal 11. Sec., Twn, Rge, Mer. (NMPM) 0 Sec. 24, T30N, R06W API # 30-039- 27758	
14. Distance in Miles from Nearest Town 16 mile to Gobernador, NM	12. County Rio Arriba	13. State NM
15. Distance from Proposed Location to Nearest Property or Lease Line 365'	17. Acres Assigned to Well W/2 320	
16. Acres in Lease	18. Distance from Proposed Location to Nearest Well, Drig, Compl, or Applied for on this Lease 500'	
19. Proposed Depth 3211'	20. Rotary or Cable Tools Rotary	
21. Elevations (DF, FT, GR, Etc.) 6224' GR	22. Approx. Date Work will Start	
23. Proposed Casing and Cementing Program See Operations Plan attached		
24. Authorized by: <u>Joni Clark</u> Regulatory Specialist	<u>3/22/04</u> Date	

PERMIT NO. _____ APPROVAL DATE _____
APPROVED BY [Signature] TITLE AFM DATE 7-16-04

Archaeological Report attached

Threatened and Endangered Species Report attached

NOTE: This format is issued in lieu of U.S. BLM Form 3160-3

Title 18 U.S.C. Section 1001, makes it a crime for any person knowingly and willfully to make to any department or agency of the United States any false, fictitious or fraudulent statements or presentations as to any matter within its jurisdiction.

No HPA notification needed -

This action is subject to technical and
regulatory review and approval by 43 CFR 3165.3
and 43 CFR 3165.4

NMOCN

ALL ACTIONS SHALL BE
SUBJECT TO COMPLIANCE WITH ATTACHED
"GENERAL REQUIREMENTS".

District II
PO Drawer DD, Artesia, NM 88211-0719OIL CONSERVATION DIVISION
PO Box 2088
Santa Fe, NM 87504-2088Instructions on back
Submit to Appropriate District Office
State Lease - 4 Copies
Fee Lease - 3 CopiesDistrict III
1000 Rio Brazos Rd., Aztec, NM 87410District IV
PO Box 2088, Santa Fe, NM 87504-2088RECEIVED ☐ AMENDED REPORT

WELL LOCATION AND ACREAGE DEDICATION PLAT

*API Number 30-039 27758		*Pool Code 71629	*Pool Name 070 Farmington, NM Basin Fruitland Coal
*Property Code 7469	*Property Name SAN JUAN 30-6 UNIT		*Well Number 489S
*GRID No. 14538	*Operator Name BURLINGTON RESOURCES OIL & GAS COMPANY, LP		*Elevation 6224'

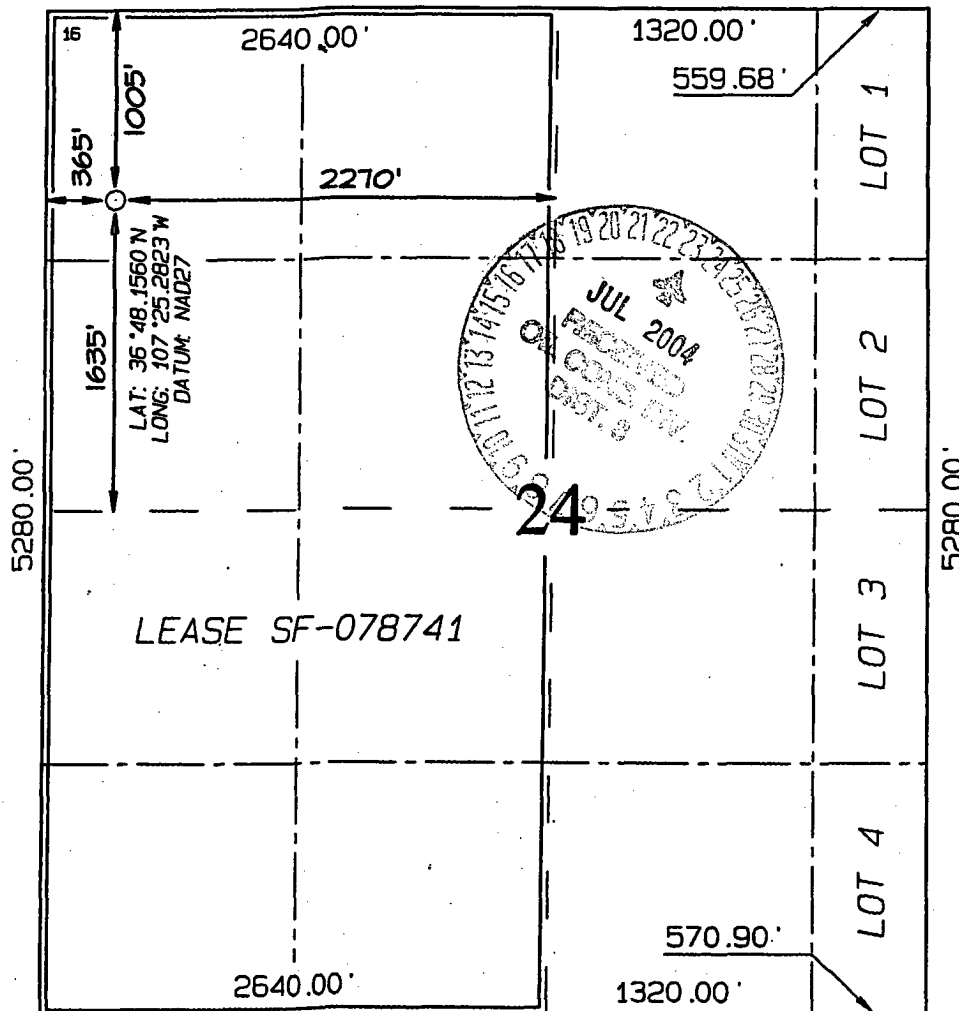
10 Surface Location

UL or lot no.	Section	Township	Range	Lot 10	Feet from the	North/South line	Feet from the	East/West line	County
D	24	30N	6W		1005	NORTH	365	WEST	RIO ARriba

11 Bottom Hole Location If Different From Surface

UL or lot no.	Section	Township	Range	Lot 10	Feet from the	North/South line	Feet from the	East/West line	County

*Dedicated Acres FC W/2 320	*Joint or Infill	*Consolidation Code	*Order No.
--------------------------------	------------------	---------------------	------------

NO ALLOWABLE WILL BE ASSIGNED TO THIS COMPLETION UNTIL ALL INTERESTS HAVE BEEN CONSOLIDATED
OR A NON-STANDARD UNIT HAS BEEN APPROVED BY THE DIVISION

17 OPERATOR CERTIFICATION

I hereby certify that the information
contained herein is true and complete
to the best of my knowledge and beliefSignature
Joni ClarkPrinted Name
Regulatory SpecialistTitle
3/22/04

Date

18 SURVEYOR CERTIFICATION

I hereby certify that the well location
shown on this plat was plotted from field
notes of actual surveys made by me or under
my supervision and that the same is true
and correct to the best of my belief.

Survey Date: NOVEMBER 25, 2003

Signature and Seal of Professional Surveyor

JASON C. EDWARDS
Certificate Number 15269

Submit 3 Copies To Appropriate District Office
District I
1625 N. French Dr., Hobbs, NM 88240
District II
1301 W. Grand Ave., Artesia, NM 88210
District III
1000 Rio Brazos Rd., Aztec, NM 87410
District IV
1220 S. St. Francis Dr., Santa Fe, NM 87505

State of New Mexico
Energy, Minerals and Natural Resources

Form C-103
March 4, 2004

OIL CONSERVATION DIVISION
1220 South St. Francis Dr.
Santa Fe, NM 87505

WELL API NO. 30-039-
5. Indicate Type of Lease STATE <input type="checkbox"/> FEE <input type="checkbox"/>
6. State Oil & Gas Lease No.
7. Lease Name or Unit Agreement Name San Juan 30-6 Unit
8. Well Number 489S
9. OGRID Number 14538
10. Pool name or Wildcat Basin Fruitland Coal

SUNDRY NOTICES AND REPORTS ON WELLS
(DO NOT USE THIS FORM FOR PROPOSALS TO DRILL OR TO DEEPEN OR PLUG BACK TO A DIFFERENT RESERVOIR. USE "APPLICATION FOR PERMIT" (FORM C-101) FOR SUCH PROPOSALS.)

1. Type of Well:
Oil Well ☐ Gas Well ☒ Other

2. Name of Operator
Burlington Resources Oil & Gas Company LP

3. Address of Operator
3401 E. 30th Street, Farmington, NM 87402

4. Well Location
Unit Letter D : 1005 feet from the North line and 365 feet from the West line
Section 24 Township 30N Range 6W NMPM Rio Arriba County, NM

11. Elevation (Show whether DR, RKB, RT, GR, etc.)

Pit or Below-grade Tank Application (For pit or below-grade tank closures, a form C-144 must be attached)

Pit Location: UL D Sect 24 Twp 30N Rng 6W Pit type New Depth to Groundwater >100' Distance from nearest fresh water well >1000' Distance from nearest surface water >1000' Below-grade Tank Location UL Sect Twp Rng ;
 feet from the line and feet from the line

12. Check Appropriate Box to Indicate Nature of Notice, Report or Other Data
NOTICE OF INTENTION TO:

PERFORM REMEDIAL WORK ☐ PLUG AND ABANDON ☐
TEMPORARILY ABANDON ☐ CHANGE PLANS ☐
PULL OR ALTER CASING ☐ MULTIPLE COMPLETION ☐

OTHER: New Drill Pit ☒

SUBSEQUENT REPORT OF:

REMEDIAL WORK ☐ ALTERING CASING ☐
COMMENCE DRILLING OPNS. ☐ PLUG AND ABANDONMENT ☐
CASING TEST AND CEMENT JOB ☐

OTHER: ☐

13. Describe proposed or completed operations. (Clearly state all pertinent details, and give pertinent dates, including estimated date of starting any proposed work). SEE RULE 1103. For Multiple Completions: Attach wellbore diagram of proposed completion or recompletion.

Burlington Resources proposes to construct a new drill pit. The new drill pit will be an unlined pit as detailed in Burlington's general pit construction plan dated April 26, 2004 on file at the NMOCD office.

I hereby certify that the information above is true and complete to the best of my knowledge and belief. I further certify that any pit or below-grade tank has been/will be constructed or closed according to NMOCD guidelines ☐, a general permit ☒ or an (attached) alternative OCD-approved plan ☐.

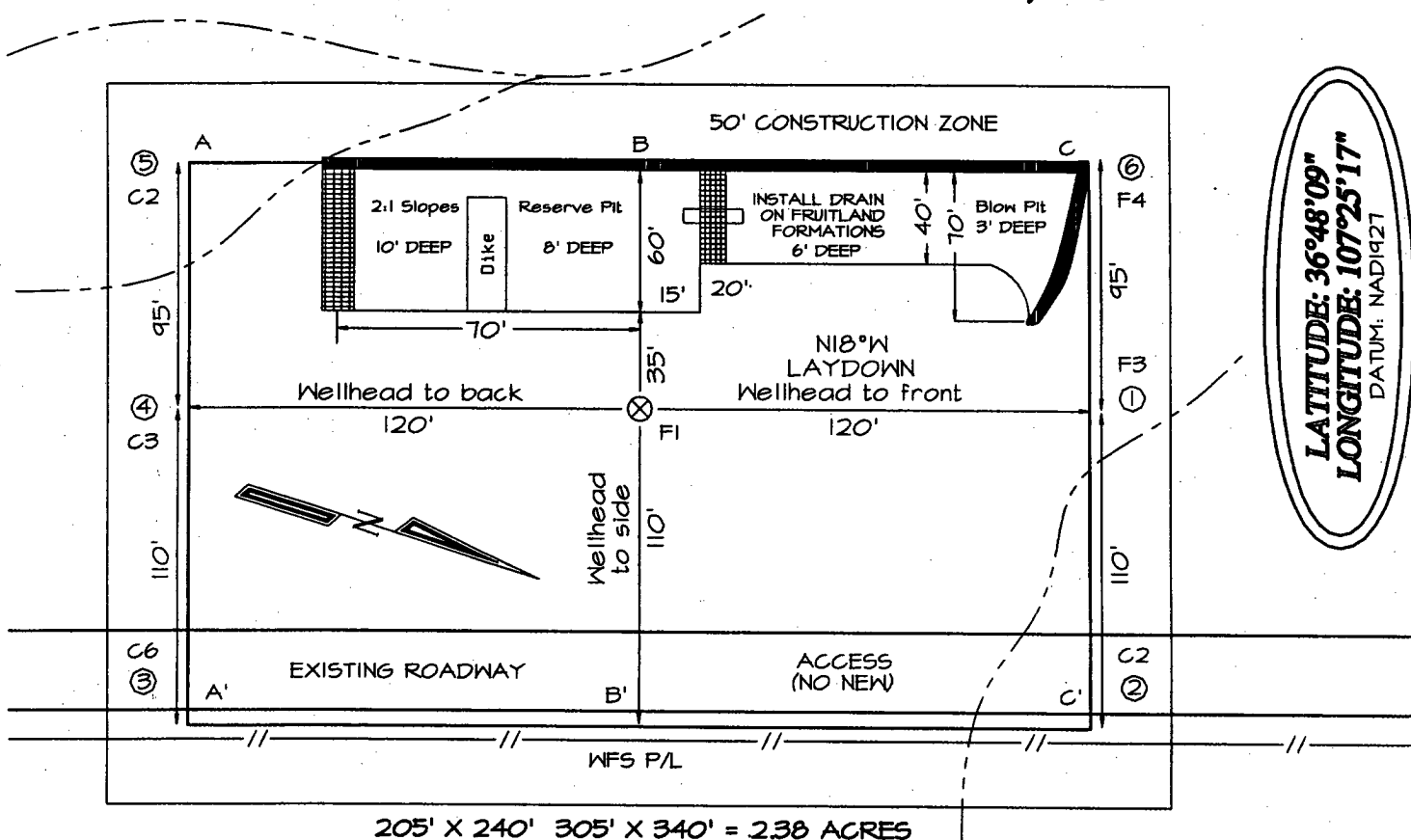
SIGNATURE Cassady Harraden TITLE Regulatory Specialist DATE 5/6/04

Type or print name Cassady Harraden E-mail address: charraden@br-inc.com Telephone No. 326-9700

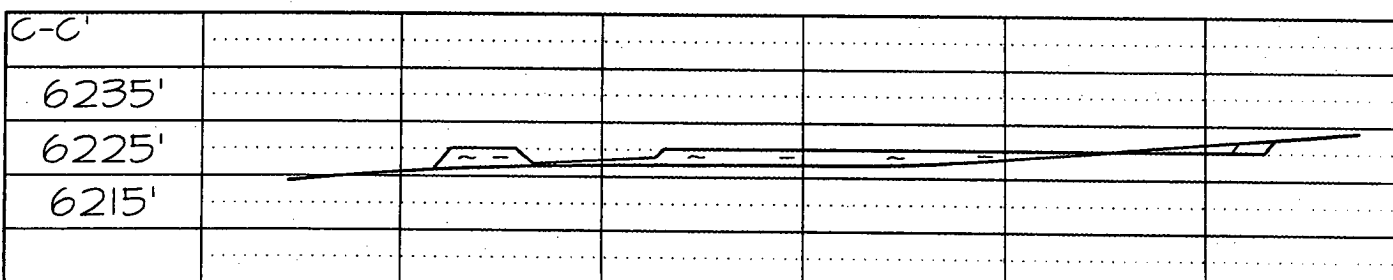
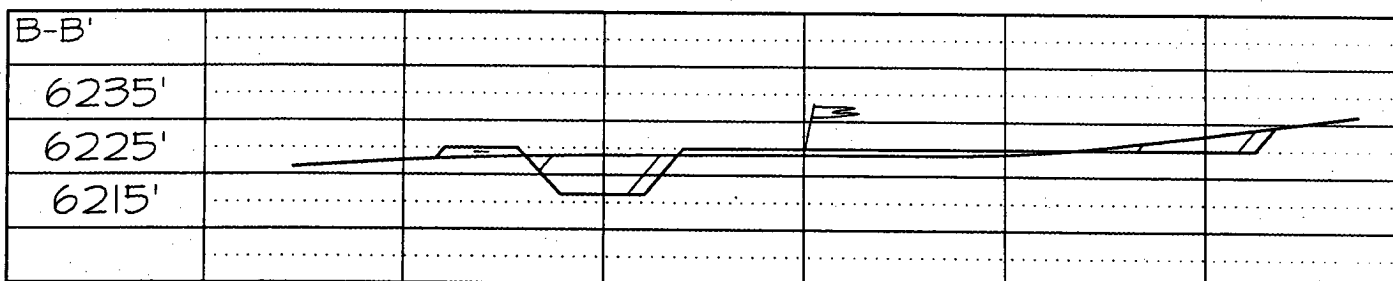
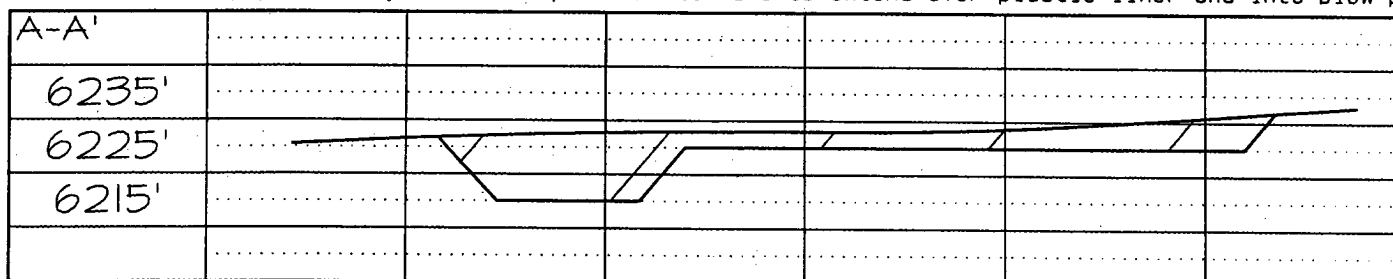
(This space for State use)

APPROVED BY [Signature] TITLE DEPUTY OIL & GAS INSPECTOR, DIST. IV DATE JUL 23 2004
Conditions of approval, if any:

BURKINGTON RESOURCES OIL & GAS COMPANY SAN JUAN 30-6 UNIT #4893
 1005' FNL & 365' FWL, SECTION 24, T30N, R6W, NMPM, RIO ARriba COUNTY, NM
 GROUND ELEVATION: 6224' DATE: NOVEMBER 25, 2003



Reserve Pit Dike: to be 8' above Deep side (overflow - 3' wide and 1' above shallow side).
 Blow Pit: overflow pipe halfway between top and bottom and to extend over plastic liner and into blow pit.



Note: Contractor should call One-Call for location of any marked or unmarked buried pipelines or cables on well pad and/or access road at least two (2) working days prior to construction

OPERATIONS PLAN

Well Name: San Juan 30-6 Unit # 489S
Location: 1005' FNL, 365' FWL Section 24, T-30-N, R-06-W
Latitude 36° 48.1560' N, Longitude 107° 25.2823' W
Rio Arriba, NM
Formation: Basin Fruitland Coal
Elevation: 6224' GR

Formation:	Top	Bottom	Contents
Surface	San Jose	2296'	
Ojo Alamo	2296'	2409'	aquifer
Kirtland	2409'	2900'	
Intermediate TD	2870'		
Fruitland Coal	2900'	3126'	gas
B/Basal Coal	3126'	3130'	gas
Pictured Cliffs	3130'		
Total Depth	3211'		

Logging Program: GR/Density from 7" to 3211'

Mudlog: from 7" to 3211'

Coring Program: none

Mud Program:

Interval	Type	Weight	Vis.	Fluid Loss
0- 120'	Spud Mud/Air/Air Mist	8.4-9.0	40-50	no control
120-2870'	Non-dispersed	8.4-9.0	30-60	no control
2870-3211'	Air/Mist			

Casing Program (as listed, the equivalent, or better):

Hole Size	Depth Interval	Csg. Size	Wt.	Grade
12 1/4"	0' - 120'	9 5/8"	32.3#	H-40
8 3/4"	0' - 2870'	7"	20.0#	J-55
6 1/4"	2870' - 3211'	open hole		

Alternate Casing Program (as listed, the equivalent, or better):

Hole Size	Depth Interval	Csg. Size	Wt.	Grade
12 1/4"	0' - 120'	9 5/8"	32.3#	H-40
8 3/4"	0' - 2870'	7"	20.0#	J-55
6 1/4"	2830' - 3211'	5 1/2"	15.5#	J-55

Tubing Program:

0' - 3211'	2 3/8"	4.7#	J-55
------------	--------	------	------

Float Equipment: 9 5/8" surface casing - saw tooth guide shoe. Centralizers will be run in accordance with Onshore Order #2.

7" intermediate casing - guide shoe and self-fill float collar. Standard centralizers run every other joint above shoe. Two turbolizing type centralizers - one below and one into the base of the Ojo Alamo @ 2409'. Standard centralizers thereafter every fourth joint up to the base of the surface pipe.

Wellhead Equipment: 9 5/8" x 7" x 2 3/8" x 11" 2000 psi xmas tree assembly.

Cementing:

9 5/8" surface casing -

Pre-Set Drilled Cement with 23 sx Type I, II cement with 20% flyash mixed at 14.5 ppg, 1.61 cu ft per sack yield. (37 cu ft of slurry, bring cement to surface) Wait on cement for 24 hours for pre-set holes before pressure testing or drilling out from under surface.

Conventionally Drilled

Cement with 88 sx Type III cement with 0.25 pps Celloflake, 3% CaCl. (113 cu ft of slurry, 200% excess, bring cement to surface) Wait on cement for 8 hrs for conventionally set holes before pressure testing or drilling out from under surface.

WOC until cement establishes 250 psi compressive strength prior to NU of BOPE.

7" intermediate casing - lead w/245 sacks Premium Lite with 3% calcium chloride, 5 pps LCM-1, and 1/4#/sack flocele, 0.4% FL-52, & 0.4% SMS. Tail with 90 sacks Type III cmt with 1% calcium chloride, 1/4#/sack flocele and 0.2% FL-52 (647 cu.ft., 50% excess to circulate to surface).

5 1/2" liner - will not be cemented if run.

Note: If open hole logs are run, cement volumes will be based on 25% excess over caliper volumes.

BOP and tests:

Surface to intermediate TD - 11" 2000 psi (minimum) double gate BOP stack (Reference Figure #1). Prior to drilling out surface casing, test BOPE to 600 psi for 30 min.

Intermediate TD to Total Depth - 7 1/6" 2000 psi (minimum) completion BOP stack (Reference Figure #2) Prior to drilling out intermediate casing, test BOPE and casing to 1500 psi for 30 minutes.

From surface to 7" TD - a choke manifold will be installed in accordance with Onshore Order No. 2 (Reference Figure #3). When the cavitation completion rig drills the production hole, the completion rig configuration will be used (Reference Figure #4).

Pipe rams will be actuated at least once each day and blind rams actuated once each trip to test proper functioning. An upper kelly cock valve with handle and drill string safety valves to fit each drill string will be maintained and available on the rig floor.

Additional information:

- * The Fruitland Coal formation will be completed.
- * Anticipated pore pressure for the Fruitland is less than 500 psi.
- * This gas is dedicated.
- * The west half of Section 24 is dedicated to the Fruitland Coal.

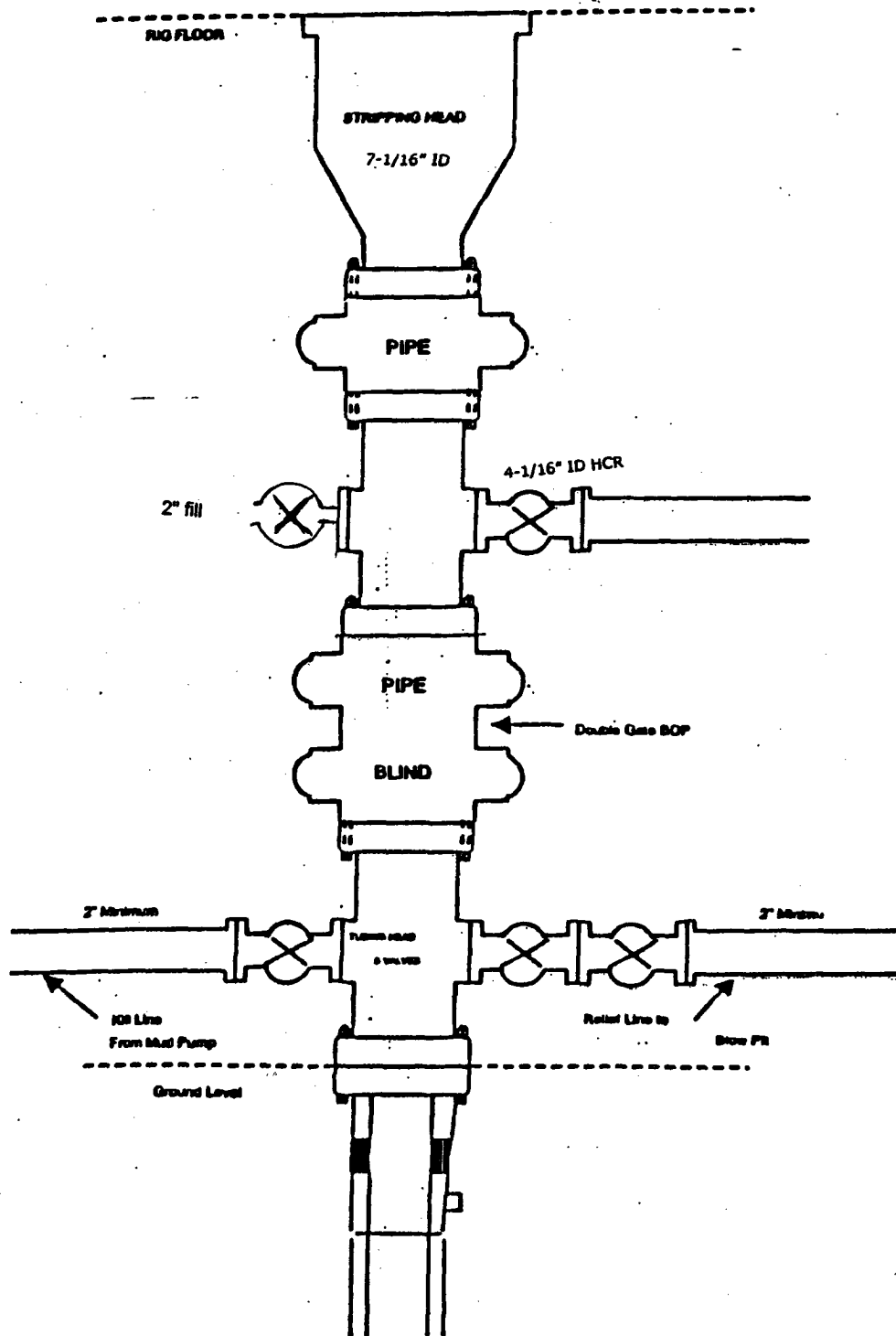
Date: 7-21-04

Drilling Engineer: Jim McCarthy

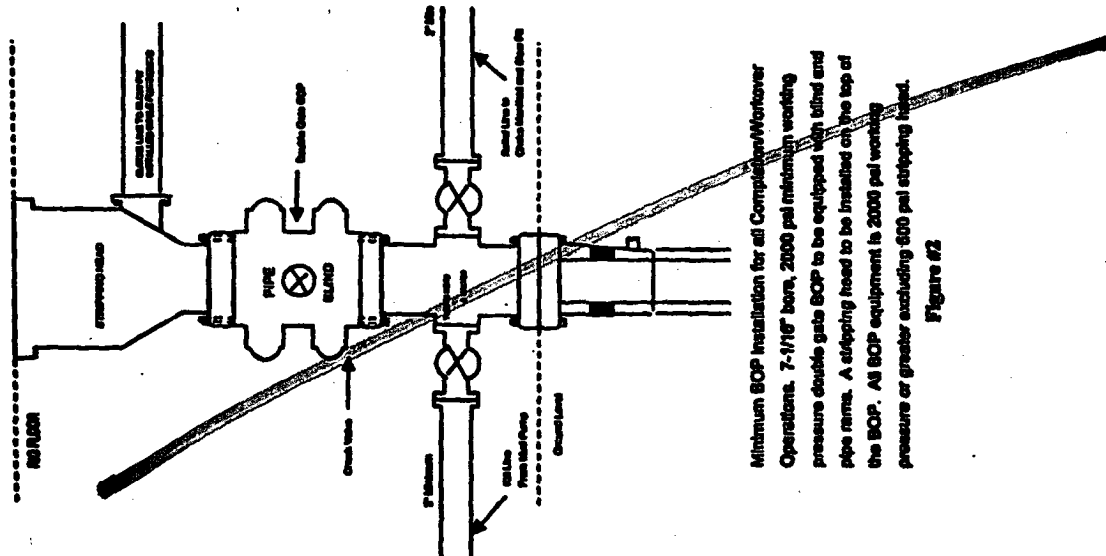
BURLINGTON RESOURCES

FIGURE #4

Cavitation Rig
BOP Configuration
2,000 psi Minimum System



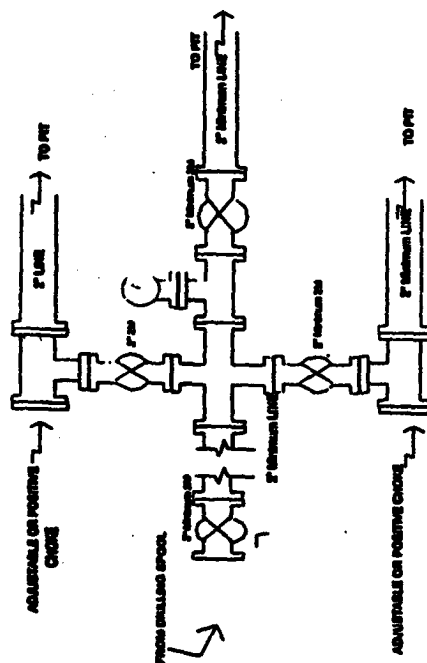
Completion/Workover Rig
BOP Configuration
2,000 psi System



Minimum BOP Installation for all Completion/Workover Operations. 7-1/16" bore, 2000 psi minimum working pressure double gate BOP to be equipped with blind and pipe rams. A stepping head to be installed on the top of the BOP. All BOP equipment is 2000 psi working pressure or greater excluding 800 psi stepping head.

Figure #2

Drilling Rig
Choke Manifold Configuration
2000 psi System

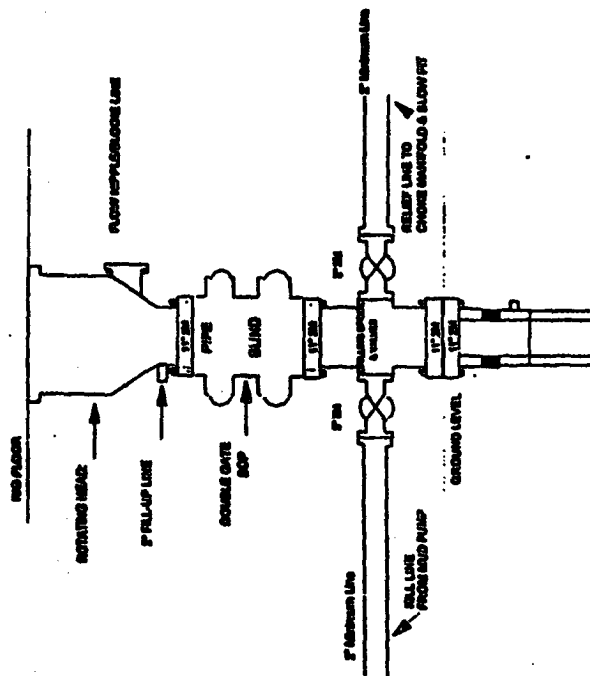


Choke manifold installation from Surface Casing Point to Total Depth. 2,000psi working pressure equipment with two chokes.

Figure #3

4-20-01

Drilling Rig
2000 psi System



BOP Installation from Surface Casing Point to Total Depth. 11" Bore 10" Nominal, 2000 psi working pressure double gate BOP to be equipped with blind rams and pipe rams. A 800 psi stepping head on top of ram preventers. All BOP equipment is 2,000 psi working pressure

Figure #1

4-20-01