

UNITED STATES  
DEPARTMENT OF THE INTERIOR  
BUREAU OF LAND MANAGEMENT

APPLICATION FOR PERMIT TO DRILL, DEEPEN, OR PLUG BACK

200 OCT 20 PM 2:27

1a. Type of Work  
DRILL

5. Lease Number  
SF-0806030

Unit Reporting Number

891001054A

6. If Indian, All. or Tribe

1b. Type of Well  
GAS

2. Operator  
**BURLINGTON  
RESOURCES**

Oil & Gas Company

7. Unit Agreement Name

San Juan 27-4 Unit

3. Address & Phone No. of Operator  
PO Box 4289, Farmington, NM 87499  
(505) 326-9700

8. Farm or Lease Name  
San Juan 27-4 Unit

9. Well Number

1442 SJM

4. Location of Well  
1470' FNL, 915' FWL  
Latitude 36° 32.9, Longitude 107° 15.7

10. Field, Pool, Wildcat  
Blanco Mesaverde

11. Sec., Twn, Rge, Mer. (NMPM)

E Sec. 28, T-27-N, R-4-W  
API # 30-039-26530

14. Distance in Miles from Nearest Town  
21 miles from Gobernador

12. County Rio Arriba 13. State NM

15. Distance from Proposed Location to Nearest Property or Lease Line  
915'

16. Acres in Lease

17. Acres Assigned to Well  
320 W/2

18. Distance from Proposed Location to Nearest Well, Drlg, Compl, or Applied for on this Lease  
2300'

19. Proposed Depth  
6564'

This action is subject to technical and  
procedural review pursuant to 43 CFR 3105.3  
and appeal pursuant to 43 CFR 3105.4.

20. Rotary or Cable Tools  
Rotary

21. Elevations (DF, FT, GR, Etc.)  
7152' GR

22. Approx. Date Work will Start

23. Proposed Casing and Cementing Program  
See Operations Plan attached

DRILLING OPERATIONS AUTHORIZED ARE  
SUBJECT TO COMPLIANCE WITH ATTACHED  
"GENERAL REQUIREMENTS"

24. Authorized by: Regan Call  
Regulatory/Compliance Supervisor

10-6-00  
Date

PERMIT NO. \_\_\_\_\_

APPROVAL DATE JUL 14 2004

APPROVED BY Original Signed: Stephen Mason

TITLE \_\_\_\_\_

DATE JUL 14 2004

Archaeological Report to be submitted

Threatened and Endangered Species Report to be submitted

NOTE: This format is issued in lieu of U.S. BLM Form 3160-3

Title 18 U.S.C. Section 1001, makes it a crime for any person knowingly and willfully to make to any department or agency of the United States any false, fictitious or fraudulent statements or presentations as to any matter within its jurisdiction.

NMCC

District I  
PO Box 1980, Hobbs, NM 88241-1980

State of New Mexico  
Energy, Minerals & Natural Resources Department

Form C-102  
Revised February 21, 1994  
Instructions on back  
Submit to Appropriate District Office  
State Lease - 4 Copies  
Fee Lease - 3 Copies

District II  
PO Drawer 00, Artesia, NM 88211-0719

OIL CONSERVATION DIVISION  
PO Box 2088  
Santa Fe, NM 87504-2088

District III  
1000 Rio Brazos Rd., Aztec, NM 87410

District IV  
PO Box 2088, Santa Fe, NM 87504-2088

☐ AMENDED REPORT

### WELL LOCATION AND ACREAGE DEDICATION PLAT

API Number 30-039-26530		Pool Code 72319	Pool Name Blanco Mesaverde
Property Code 7452	Property Name SAN JUAN 27-4 UNIT		Well Number <del>1444</del> 54M
OGRID No. 14538	Operator Name BURLINGTON RESOURCES OIL & GAS COMPANY		Elevation 7152'

#### 10 Surface Location

UL or lot no.	Section	Township	Range	Lot Idn	Feet from the	North/South line	Feet from the	East/West line	County
E	28	27N	4W		1470	NORTH	915	WEST	RIO ARriba

#### 11 Bottom Hole Location If Different From Surface

UL or lot no.	Section	Township	Range	Lot Idn	Feet from the	North/South line	Feet from the	East/West line	County

Dedicated Acres W/320	Joint or Infill	Consolidation Code	Order No.
--------------------------	-----------------	--------------------	-----------

NO ALLOWABLE WILL BE ASSIGNED TO THIS COMPLETION UNTIL ALL INTERESTS HAVE BEEN CONSOLIDATED OR A NON-STANDARD UNIT HAS BEEN APPROVED BY THE DIVISION

<div><p>16</p><p>5280.00'</p><p>915'</p><p>1470'</p><p>LAT: 36°32.9'N LONG: 107°15.7'W</p><p>5270.76'</p><p>28</p><p>USA SF-080675</p><p>5260.20'</p></div>	<div><p>17 OPERATOR CERTIFICATION</p><p>I hereby certify that the information contained herein is true and complete to the best of my knowledge and belief</p><p><i>Peggy Cole</i></p><p>Signature</p><p>Peggy Cole</p><p>Printed Name</p><p>Regulatory Supervisor</p><p>Title</p><p>10-6-00</p><p>Date</p></div>
	<div><p>18 SURVEYOR CERTIFICATION</p><p>I hereby certify that the well location shown on this plat was plotted from field notes of actual surveys made by me or under my supervision and that the same is true and correct to the best of my belief.</p><p>JULY 14, 2000</p><p>Date of Survey</p><p><i>NEALE G EDWARDS</i></p><p>Signature and Seal of Surveyor</p><p>NEALE G EDWARDS</p><p>NEW MEXICO</p><p>6857</p><p>Certificate No. 6857</p></div>

UNITED STATES  
DEPARTMENT OF THE INTERIOR  
BUREAU OF LAND MANAGEMENT

Sundry Notices and Reports on Wells

1. Type of Well  
GAS

2002 SEP 26 PM 1:36

070 FARMINGTON, NM

2. Name of Operator

**BURLINGTON  
RESOURCES**

OIL & GAS COMPANY

3. Address & Phone No. of Operator

PO Box 4289, Farmington, NM 87499 (505) 326-9700

4. Location of Well, Footage, Sec., T, R, M

1470' FNL, 915' FWL, Sec. 28, T-27-N, R-4-W, NMPM

5. Lease Number  
NMSF-080675

6. If Indian, All. or  
Tribe Name

7. Unit Agreement Name

San Juan 27-4 Unit  
8. Well Name & Number  
San Juan 27-4 U #57M

9. API Well No.  
30-039-26530

10. Field and Pool  
Blanco MV/Basin DK

11. County and State  
Rio Arriba Co, NM

12. CHECK APPROPRIATE BOX TO INDICATE NATURE OF NOTICE, REPORT, OTHER DATA

Type of Submission

☒ Notice of Intent  
☐ Subsequent Report  
☐ Final Abandonment

Type of Action

☐ Abandonment  
☐ Recompletion  
☐ Plugging Back  
☐ Casing Repair  
☐ Altering Casing  
☒ Other -  
☒ Change of Plans  
☐ New Construction  
☐ Non-Routine Fracturing  
☐ Water Shut off  
☐ Conversion to Injection

13. Describe Proposed or Completed Operations

It is intended to change the well name for the Application for Permit to Drill, Deepen or Plug Back to the San Juan 27-4 Unit #57M from the San Juan 27-4 Unit #144A. Also the well will be completed in the Dakota formation as well as the Mesaverde. Attached is a new C-102 plat, an Operations Plan, BOP diagram and site diagram. After completion the well will be down hole commingled. A down hole commingle application will be submitted.

14. I hereby certify that the foregoing is true and correct.

Signed Stephan Mason Title Regulatory Supervisor Date 8/6/02  
no

(This space for Original Signed in State Office use)

APPROVED BY Stephan Mason Title Regulatory Supervisor Date JUL 14 2004

CONDITION OF APPROVAL, if any:

## OPERATIONS PLAN

**Well Name:** San Juan 27-4 Unit #144A  
**Location:** 1470' FNL, 915' FWL, Section 28, T-27-N, R-4-W  
Rio Arriba County, New Mexico  
Latitude 36° 32.9, Longitude 107° 15.7  
**Formation:** Blanco Mesa Verde  
**Elevation:** 7152' GL

<u>Formation Tops:</u>	<u>Top</u>	<u>Bottom</u>	<u>Contents</u>
Surface	San Jose	3413'	
Ojo Alamo	3413'	3604'	aquifer
Kirtland	3604'	3689'	
Fruitland	3689'	4014'	gas
Pictured Cliffs	4014'	4109'	gas
Lewis	4109'	4504'	gas
Intermediate TD	4209'		
Huerfanito Bentonite	4504'	4984'	gas
Chacra	4984'	5706'	gas
Massive Cliff House	5706'	5839'	gas
Menefee	5839'	6164'	gas
Point Lookout	6164'		gas
Total Depth	6564'		

### Logging Program:

Mud Logs/Coring/DST -

Mud logs - none

Coring - none

DST - none

Cased hole - Gamma Ray, Cement bond - surface to TD

### Mud Program:

<u>Interval- MD</u>	<u>Type</u>	<u>Weight</u>	<u>Vis.</u>	<u>Fluid Loss</u>
0- 300'	Spud	8.4-9.0	40-50	no control
300- 4209'	LSND	8.4-9.0	30-60	no control
4209- 6564'	Air/Mist/N2*	n/a	n/a	n/a

Pit levels will be visually monitored to detect gain or loss of fluid control.

\*Nitrogen might be used in conjunction with or instead of air to prevent a down hole fire.

### Casing Program (as listed, the equivalent, or better):

<u>Hole Size</u>	<u>Measured Depth</u>	<u>Csq Size</u>	<u>Weight</u>	<u>Grade</u>
12 1/4"	0' - 300'	9 5/8"	32.3#	H-40
8 3/4"	0' - 4209'	7"	20.0#	J-55
6 1/4"	4109' - 6564'	4 1/2"	10.5#	J-55

**Tubing Program:** 0' -6564' 2 3/8" 4.7# J-55

**BOP Specifications, Wellhead and Tests:****Surface to Intermediate TD -**

11" 2000 psi minimum double gate BOP stack (Reference Figure #1). After nipple-up prior to drilling out surface casing, rams and casing will be tested to 600 psi for 30 minutes.

**Intermediate TD to Total Depth -**

11" 2000 psi minimum double gate BOP stack (Reference Figure #1). After nipple-up prior to drilling out intermediate casing, rams and casing will be tested to 1500 psi for 30 minutes.

**Surface to Total Depth -**

2" nominal, 2000 psi minimum choke manifold (Reference Figure #3).

**Completion Operations -**

7 1/16" 2000 psi double gate BOP stack (Reference Figure #2). After nipple-up prior to completion, pipe rams, casing and liner top will be tested to 2000 psi for 15 minutes.

**Wellhead -**

9 5/8" x 7" x 2 3/8" x 2000 psi tree assembly.

**General -**

- Pipe rams will be actuated once each day and blind rams will be actuated once each trip to test proper functioning.
- An upper kelly cock valve with handle available and drill string valves to fit each drill string will be available on the rig floors at all times.
- BOP pit level drill will be conducted weekly for each drill crew.
- All BOP tests & drills will be recorded in daily drilling reports.
- Blind and pipe rams will be equipped with extension hand wheels.

**Cementing:**

9 5/8" surface casing - cement with 239 sx Class "B" cement with 1/4# flocele/sx and 3% calcium chloride (282 cu.ft. of slurry, 200% excess to circulate to surface). WOC 8 hrs. Test casing to 600 psi for 30 minutes.

Saw tooth guide shoe on bottom. Bowspring centralizers will be run in accordance with Onshore Order #2.

**7" intermediate casing -**

Lead w/398 sx Class "B" w/3% sodium metasilicate, 10# gilsonite/sx and 0.5# flocele/sx. Tail w/90 sx 50/50 Class "B" Poz w/2% gel, 2% calcium chloride, 5# gilsonite/sx, 0.1% antifoam and 0.25# flocele/sx (1266 cu.ft. of slurry, 100% excess to circulate to surface). WOC minimum of 8 hours before drilling out intermediate casing. If cement does not circulate to surface, a CBL will be run to determine TOC. Test casing to 1500 psi for 30 minutes.

7" intermediate casing alternative two stage: Stage collar at 3589'. First stage: cement with 148 sx Class "B" 50/50 poz w/2% gel, 5 pps Gilsomite, 2% calcium chloride, 0.5 pps Cellophane. Second stage: 372 sx Class "B" with 3% sodium metasilicate, 1/2 pps Cellophane, 10 pps Gilsomite (1266 cu.ft., 100% excess to circulate to surface).

Cement nose guide shoe on bottom with float collar spaced on top of shoe joint. Bowspring centralizers spaced every other joint off bottom, to the base of the Ojo Alamo at 3604'. Two turbolating centralizers at the base of the Ojo Alamo at 3604'. Bowspring centralizers spaced every fourth joint from the base of the Ojo Alamo to the base of the surface casing.

4 1/2" Production Liner -

Cement to circulate liner top. Pump 250 sx 50/50 Class "B" Poz w/1/4# flocele/sx, 4% gel, 0.1% retardant, 5# gilsonite/sx, 0.3% fluid loss additive, 0.35% dispersant (353 cu.ft., 40% excess to circulate liner top). WOC a minimum of 18 hrs prior to completing.

Cement nose guide shoe on bottom with float collar spaced on top of shoe joint. The liner hanger will have a rubber packoff.

- If hole conditions permit, an adequate water spacer will be pumped ahead of each cement job to prevent cement/ mud contamination or cement hydration.

Special Drilling Operations (Air/Mist Drilling):

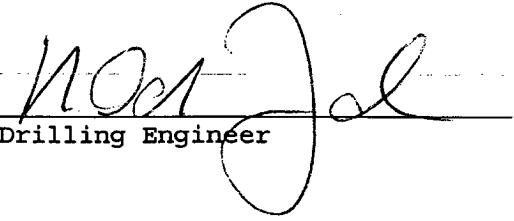
The following equipment will be operational while air/mist drilling:

- An anchored blooie line will be utilized to discharge all cuttings and circulating medium to the blow pit a minimum of 100' from the wellhead.
- The blooie line will be equipped with an automatic igniter or pilot light.
- Compressors will be located a minimum of 100' from the wellhead in the opposite direction from the blooie line.
- Engines will have spark arresters or water cooled exhaust.
- The rotating head will be properly lubricated and maintained.
- A float valve will be utilized above the bit.
- Mud circulating equipment, water, and mud materials will be sufficient to maintain control of the well.

Additional Information:

- The Mesa Verde formation will be completed.
- No abnormal temperatures or hazards are anticipated.
- Anticipated pore pressures are as follows:

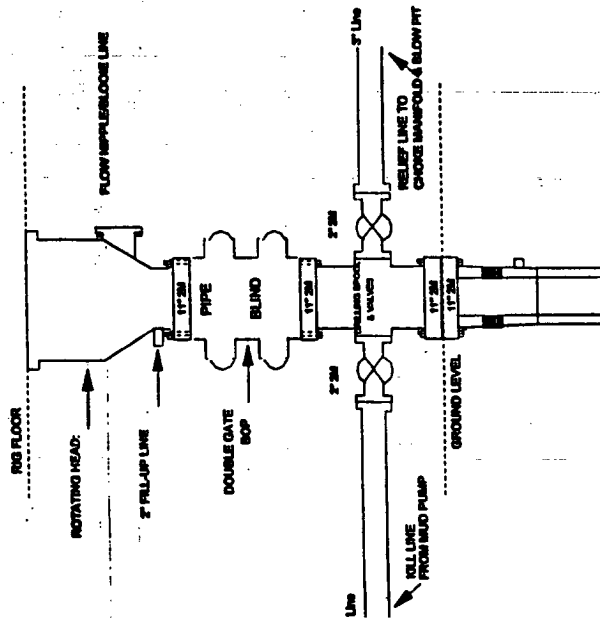
Fruitland Coal	300 psi
Pictured Cliffs	600 psi
Mesa Verde	700 psi
- Sufficient LCM will be added to the mud system to maintain well control, if lost circulation is encountered below the top of the Pictured Cliffs.
- The west half of Section 28 is dedicated to the Mesa Verde.
- This gas is dedicated.

  
Drilling Engineer

10/11/2000  
Date

# Burlington Resources

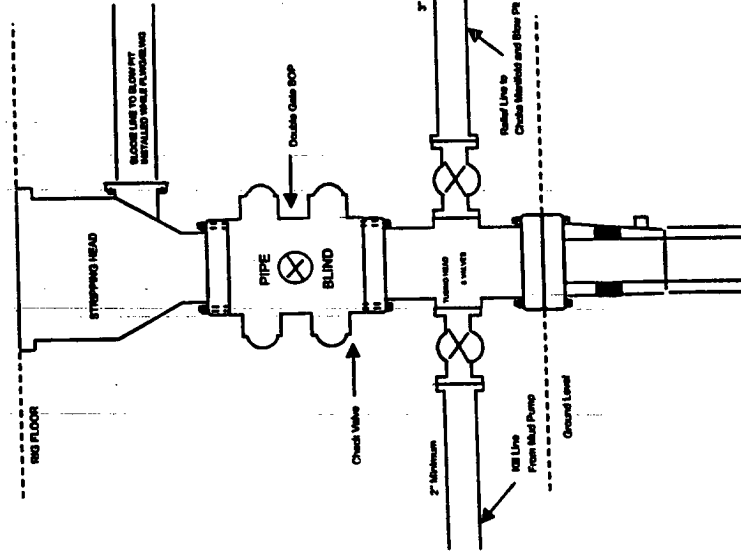
## Drilling Rig 2000 psi System



BOP Installation from Surface Casing Point to Total Depth. 11" Bore 10" Nominal. 2000 psi working pressure double gate BOP to be equipped with blind rams and pipe rams. A rotating head on top of ram preventers. All BOP equipment is 2,000 psi working pressure

Figure #1

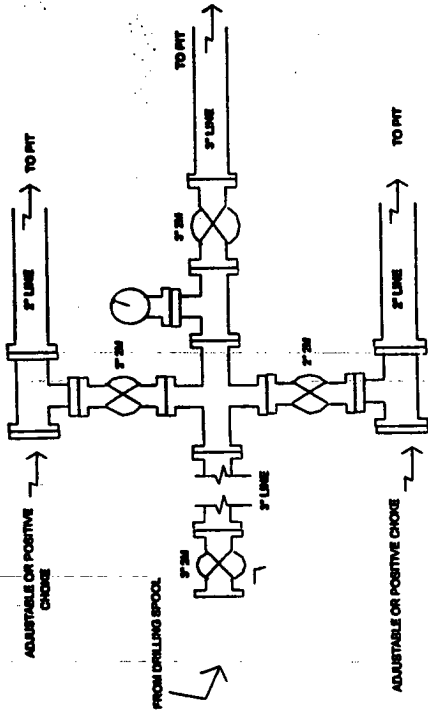
## BURLINGTON RESOURCES Completion/Workover Rig BOP Configuration 2,000 psi System



Minimum BOP Installation for all Completion/Workover Operations. 7-1/16" bore, 2000 psi minimum working pressure double gate BOP to be equipped with blind and pipe rams. A stripping head to be installed on the top of the BOP. All equipment is 2000 psi working pressure or greater.

Figure #2

## Drilling Rig Choke Manifold Configuration 2000 psi System



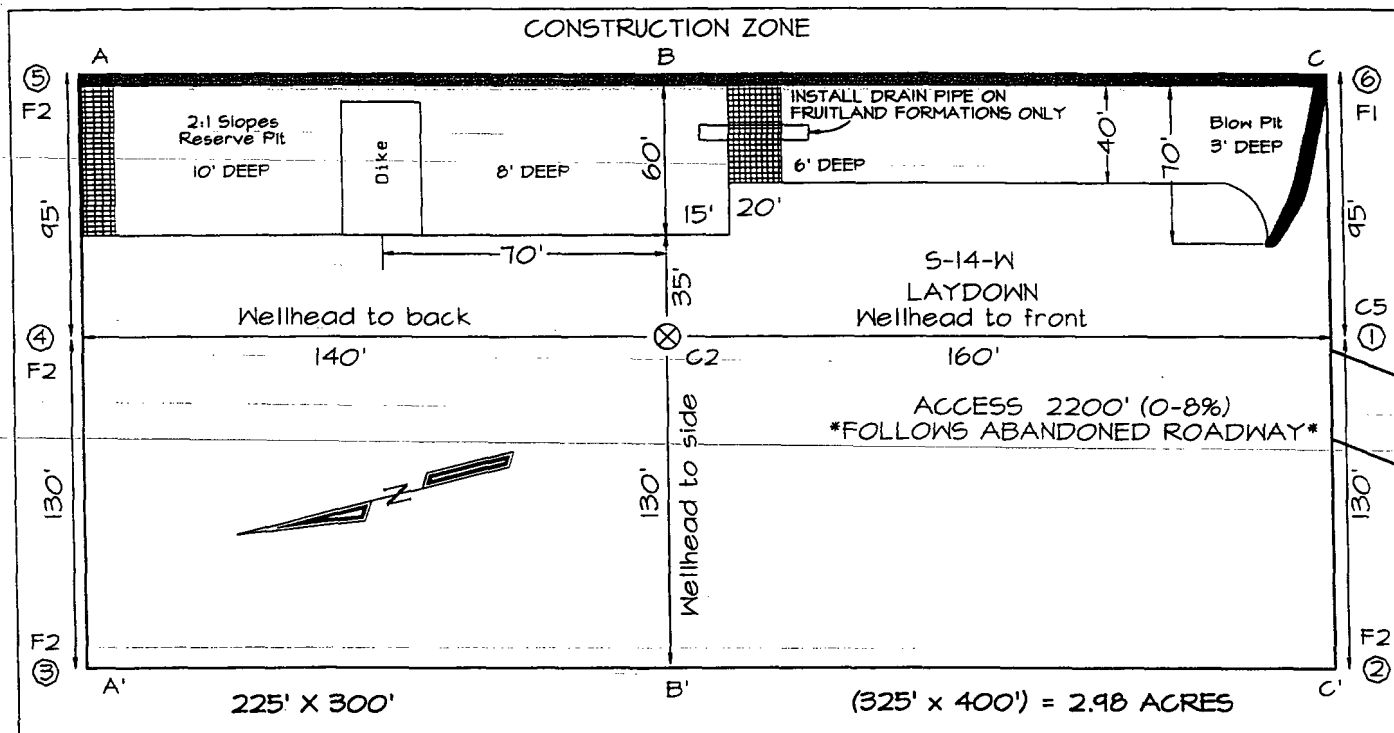
Choke manifold Installation from Surface Casing Point to Total Depth. 2,000psi working pressure equipment with two chokes.

Figure #3

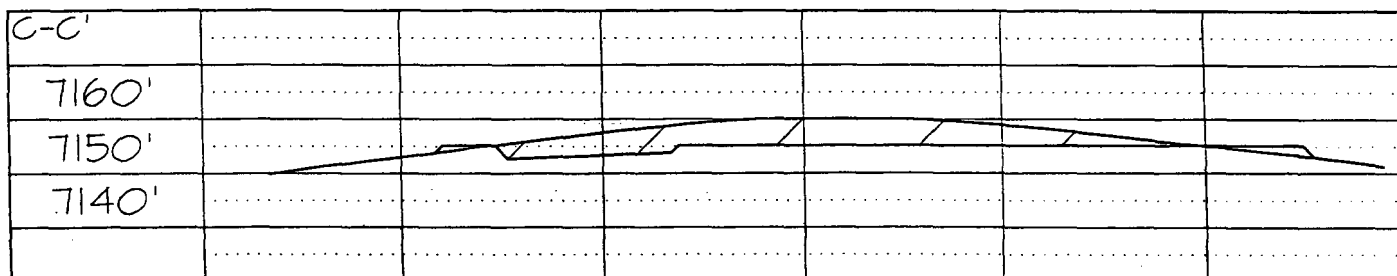
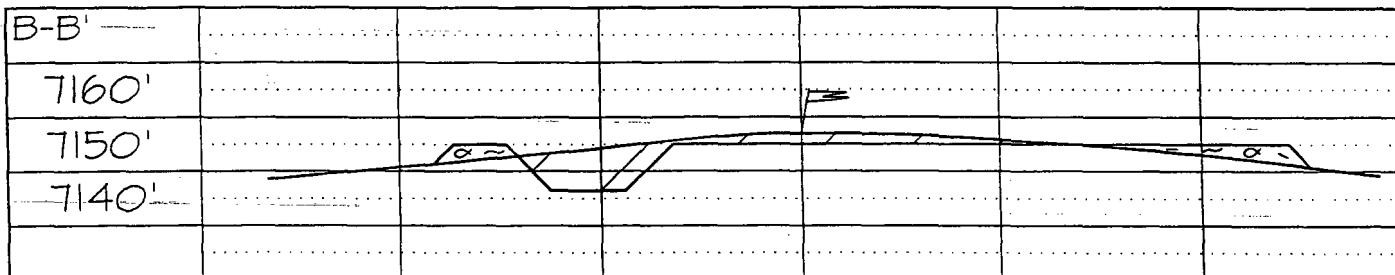
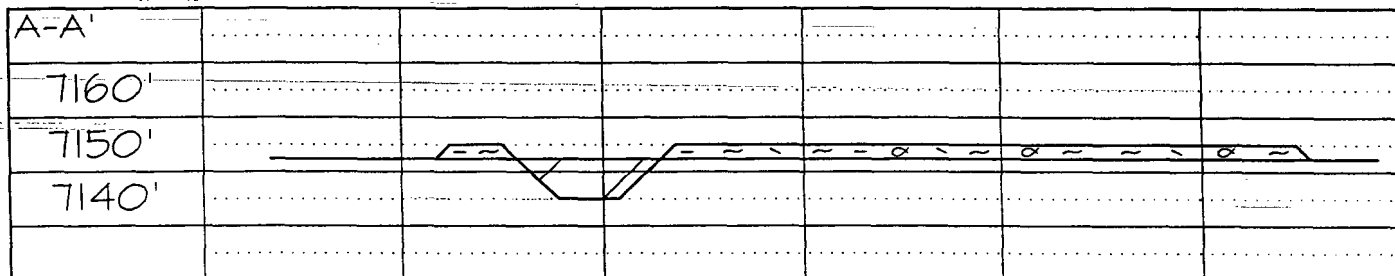
PLAT #1

**BURLINGTON RESOURCES OIL & GAS COMPANY**  
**SAN JUAN 27-4 UNIT #144A, 1470' FNL & 915' FWL**  
**SECTION 28, T27N, R4W, NMPM, RIO ARriba COUNTY, NM**  
**GROUND ELEVATION: 7152' DATE: JULY 14, 2000**

**LATITUDE: 36°32.9'**  
**LONGITUDE: 107°15.7'**



Reserve Pit Dike: to be 8' above Deep side (overflow - 3' wide and 1' above shallow side).  
 Blow Pit: overflow pipe halfway between top and bottom and to extend over plastic liner and into blow pit.



Note: Contractor should call One-Call for location of any marked or unmarked buried pipelines or cable on well pad and/or access road at least two (2) working days prior to construction