

UNITED STATES  
DEPARTMENT OF THE INTERIOR  
BUREAU OF LAND MANAGEMENT

## Sundry Notices and Reports on Wells

1. Type of Well  
GAS

2. Name of Operator

**BURLINGTON**

RESOURCES OIL & GAS COMPANY

3. Address & Phone No. of Operator

PO Box 4289, Farmington, NM 87499 (505) 326-9700

4. Location of Well, Footage, Sec., T, R, M

1140' FSL, 960' FEL, Sec. 33, T-32-N, R-9-W, NMPM

5. Lease Number

NMSF-070148 079148

If Indian, All. or  
Tribe Name

Unit Agreement Name

San Juan 32-9 Unit

8. Well Name & Number

San Juan 32-9 U#282S

9. API Well No.

30-045-32253

10. Field and Pool

Basin Fruitland Coal

11. County and State

San Juan Co, NM

12. CHECK APPROPRIATE BOX TO INDICATE NATURE OF NOTICE, REPORT, OTHER DATA

Type of Submission

Type of Action

☒ Notice of Intent

☐ Abandonment

☒ Change of Plans

☐ Subsequent Report

☐ Recompletion

☐ New Construction

☐ Final Abandonment

☐ Plugging Back

☐ Non-Routine Fracturing

☐ Casing Repair

☐ Water Shut off

☐ Altering Casing

☐ Conversion to Injection

☐ Other -

13. Describe Proposed or Completed Operations

The location of the subject well has been moved from 1140' FSL, 1010' FEL.

Attached is the revised C-102 plat, topo, & cut & fill diagram.



14. I hereby certify that the foregoing is true and correct.

Signed Tammy Jones Title Regulatory Specialist Date 6/28/04

(This space for Federal or State Office use)

APPROVED BY Tammy Jones Title EP/ROW Team Date 7/8/04

CONDITION OF APPROVAL, if any:

Title 18 U.S.C. Section 1001, makes it a crime for any person knowingly and willfully to make to any department or agency of the United States any false, fictitious or fraudulent statements or representations as to any matter within its jurisdiction.

NMOCD

DISTRICT I  
1625 N. French Dr., Hobbs, N.M. 88240

DISTRICT II  
811 South First, Artesia, N.M. 88210

DISTRICT III  
200 Rio Brazos Rd., Aztec, N.M. 87410

DISTRICT IV  
2040 South Pacheco, Santa Fe, NM 87505

State of New Mexico  
Energy, Minerals & Natural Resources Department

Form C-102  
Revised August 15, 2000

Submit to Appropriate District Office  
State Lease - 4 Copies  
Fee Lease - 3 Copies

OIL CONSERVATION DIVISION  
2040 South Pacheco  
Santa Fe, NM 87505

☐ AMENDED REPORT

WELL LOCATION AND ACREAGE DEDICATION PLAT

'API Number 30-045-32253	'Pool Code 71629	'Pool Name Basin Fruitland Coal
'Property Code 7473	'Property Name SAN JUAN 32-9 UNIT	'Well Number 282S
'OGRID No. 14538	'Operator Name BURLINGTON RESOURCES OIL AND GAS COMPANY LP	'Elevation 6632'

<sup>10</sup> Surface Location

UL or lot no.	Section	Township	Range	Lot Idn	Feet from the	North/South line	Feet from the	East/West line	County
P	33	32-N	9-W		1140'	SOUTH	960'	EAST	SAN JUAN

<sup>11</sup> Bottom Hole Location If Different From Surface

UL or lot no.	Section	Township	Range	Lot Idn	Feet from the	North/South line	Feet from the	East/West line	County
'Dedicated Acres E/318.19			'Joint or Infill		'Consolidation Code		'Order No.		

NO ALLOWABLE WILL BE ASSIGNED TO THIS COMPLETION UNTIL ALL INTERESTS HAVE BEEN CONSOLIDATED  
OR A NON-STANDARD UNIT HAS BEEN APPROVED BY THE DIVISION

16	<div>LOT 4</div> <div>Reissued to show revised location.</div> <div>LOT 5</div> <div>2004 JUN 29 PM 1 43</div>				<div>LOT 3</div> <div>LOT 6</div> <div>RECEIVED 070 FARMINGTON NM</div>				<div>LOT 2</div> <div>LOT 7</div> <div>33</div> <div>M L BLANCETT, ET AL</div> <div>RECEIVED JUL 2004 OIL CONSV. DIV. DIST. 3</div> <div>SF-079048</div> <div>LOT 9</div> <div>LOT 10</div> <div>SF-079148</div> <div>LOT 11</div> <div>960'</div> <div>1140'</div> <div>N 89-11-04 W 2614.84'</div> <div>LAT: 36°56.2206' N, LONG: 107°46.7285' W. NAD 1927</div> <div>N 00-21-34 E 2653.47'</div>				17 OPERATOR CERTIFICATION <p>I hereby certify that the information contained herein is true and complete to the best of my knowledge and belief</p> <div>Tammy Jones</div> <div>Signature</div> <div>Tammy Jones</div> <div>Printed Name</div> <div>Regulatory Specialist</div> <div>Title</div> <div>6-28-04</div> <div>Date</div>				18 SURVEYOR CERTIFICATION <p>I hereby certify that the well location shown on this plat was plotted from field notes of actual surveys made by me or under my supervision, and that the same is true and correct to the best of my belief.</p> <div>Date of Survey</div> <div>Signature of Licensed Professional Surveyor</div> <div>GREEN RUSSELL</div> <div>NEW MEXICO</div> <div>15703</div> <div>LICENSED PROFESSIONAL SURVEYOR</div> <div>15703</div> <div>Certificate Number</div>			
----	--	--	--	--	---	--	--	--	---	--	--	--	--	--	--	--	---	--	--	--

BURLINGTON RESOURCES OIL & GAS COMPANY LP

SAN JUAN 32-9 UNIT #282S

1140' FSL 960' FEL

SEC33, T32N, R9W N.M.P.M.

SAN JUAN COUNTY, NEW MEXICO

APD MAP #1

NEW BLM ACCESS

700' SW/NE SEC33, T32N R9W

100' SE/NE SEC. 33, T32N R9W

1350' NE/SE SEC. 33, T32N R9W

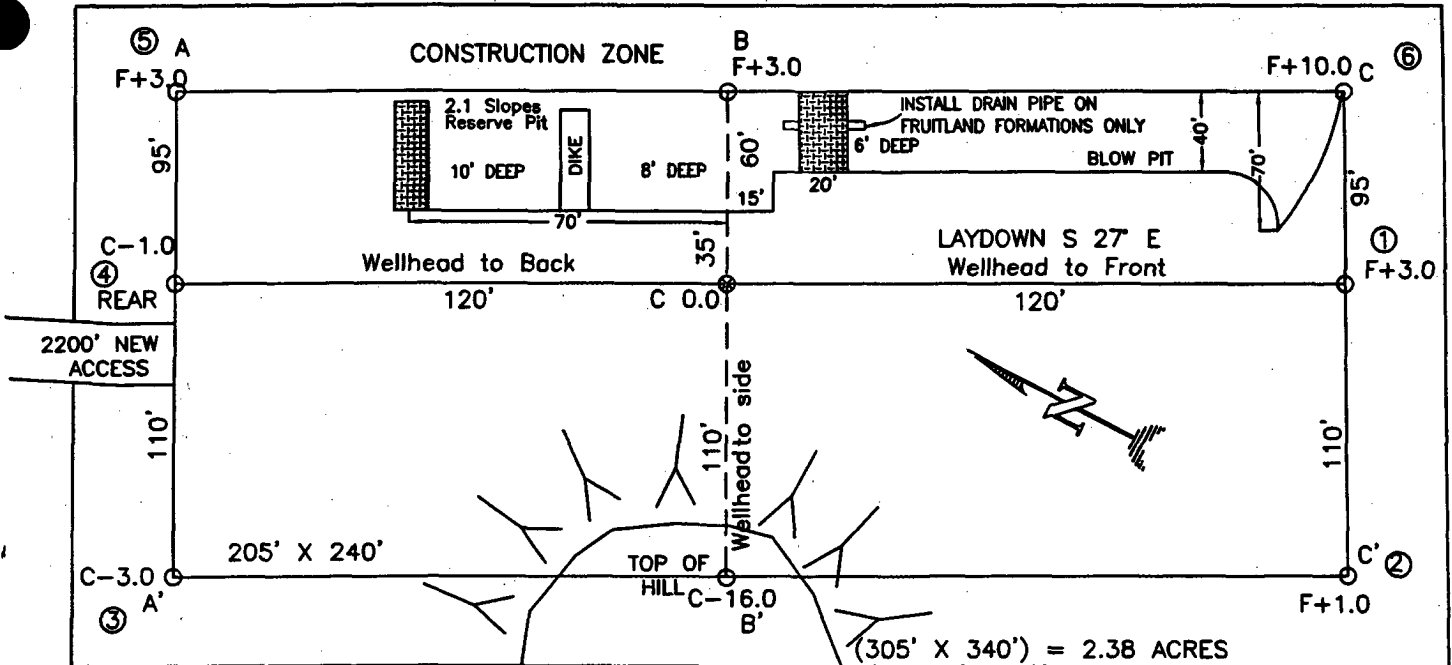
50' SE/SE SEC. 33, T32N R9W

NEW ACCESS

EXISTING ACCESS

SJ 32-9 UNIT #282S

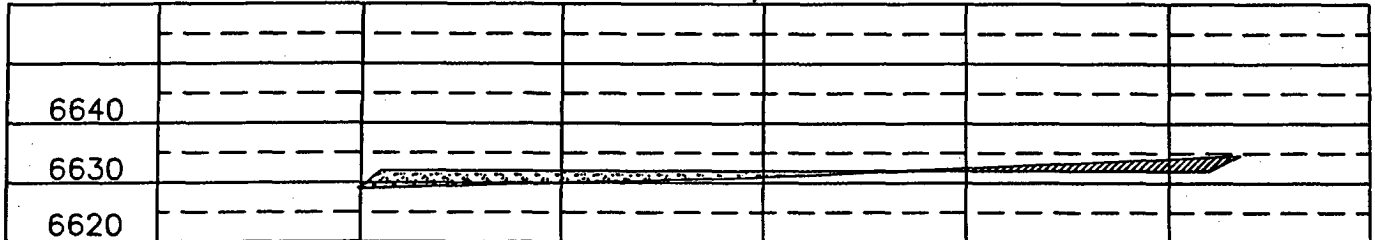
BURLINGTON RESOURCES OIL & GAS COMPANY LP  
 SAN JUAN 32-9 UNIT #282S, 1140' FSL 961' FEL  
 SECTION 33, T-32-N, R-9-W, N.M.P.M., SAN JUAN COUNTY, NEW MEXICO  
 GROUND ELEVATION: 6627', DATE: MAY 26, 2004



RESERVE PIT DIKE: TO BE 8' ABOVE DEEP SIDE (OVERFLOW - 3' WIDE AND 1' ABOVE SHALLOW SIDE).  
 BLOW PIT: OVERFLOW PIPE HALFWAY BETWEEN TOP AND BOTTOM AND TO EXTEND OVER PLASTIC LINER AND INTO BLOW PIT.

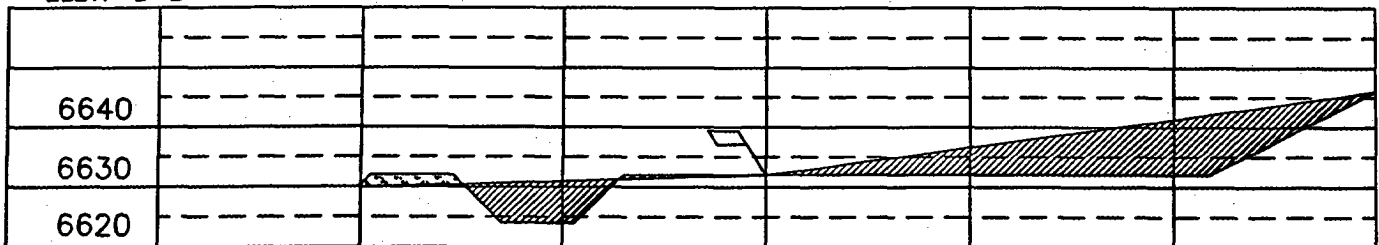
ELEV. A-A'

C/L

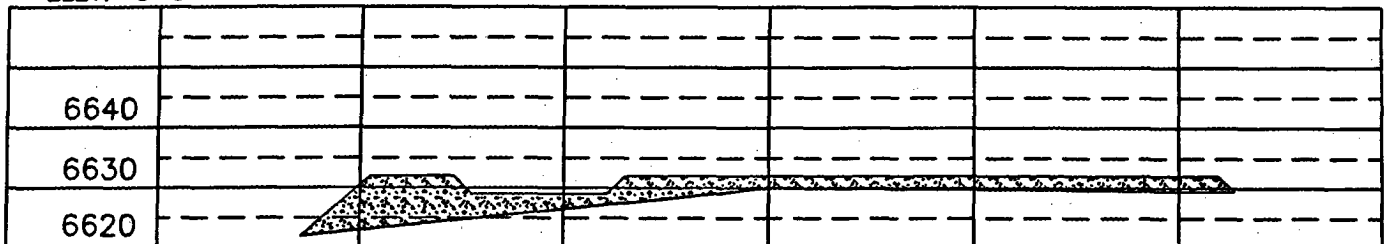


ELEV. B-B'

C/L



ELEV. C-C'



NOTE: VECTOR SURVEYS IS NOT LIABLE FOR UNDERGROUND UTILITIES OR PIPELINES.  
 CONTRACTOR SHOULD CALL ONE-CALL FOR LOCATION OF ANY MARKED OR UNMARKED BURIED PIPELINES OR CABLES  
 ON WELL PAD AND OR ACCESS ROAD AT LEAST TWO (2) WORKING DAYS PRIOR TO CONSTRUCTION.