

UNITED STATES  
DEPARTMENT OF THE INTERIOR  
BUREAU OF LAND MANAGEMENT

FORM APPROVED  
OMB No. 1004-0137  
Expires: November 30, 2000

**WELL COMPLETION OR RECOMPLETION REPORT AND LOG**

1a. Type of Well <input type="checkbox"/> Oil Well <input type="checkbox"/> Gas Well <input type="checkbox"/> Dry <input checked="" type="checkbox"/> Other: CBM		5. Lease Serial No. NMSF079004	
b. Type of Completion <input checked="" type="checkbox"/> New Well <input type="checkbox"/> Work Over <input type="checkbox"/> Deepen <input type="checkbox"/> Plug Back <input type="checkbox"/> Diff. Resvr. Other _____		6. If Indian, Allottee or Tribe Name	
2. Name of Operator CONOCOPHILLIPS COMPANY		7. Unit or CA Agreement Name and No. NMNM78424B	
3. Address PO BOX 2197 WL3 6054 HOUSTON, TX 77252		8. Lease Name and Well No. SAN JUAN 32-8 223A	
3a. Phone No. (include area code) Ph: 832.486.2462		9. API Well No. 30-045-32152-00-S1	
4. Location of Well (Report location clearly and in accordance with Federal requirements) Sec 10 T31N R8W Mer NMP At surface SWNW 1745FNL 815FWL 36.91383 N Lat, 107.66817 W Lon At top prod interval reported below At total depth		10. Field and Pool, or Exploratory BASIN FRUITLAND COAL 11. Sec., T., R., M., or Block and Survey or Area Sec 10 T31N R8W Mer NMP 12. County or Parish SAN JUAN 13. State NM	
14. Date Spudded 05/05/2004		15. Date T.D. Reached 06/30/2004	
16. Date Completed <input type="checkbox"/> D & A <input checked="" type="checkbox"/> Ready to Prod. 07/01/2004		17. Elevations (DF, KB, RT, GL)* 6676 GL	
18. Total Depth: MD 3641 TVD		19. Plug Back T.D.: MD 3641 TVD	
20. Depth Bridge Plug Set: MD TVD		21. Type Electric & Other Mechanical Logs Run (Submit copy of each) MUDLOG	
22. Was well cored? <input checked="" type="checkbox"/> No <input type="checkbox"/> Yes (Submit analysis) Was DST run? <input checked="" type="checkbox"/> No <input type="checkbox"/> Yes (Submit analysis) Directional Survey? <input checked="" type="checkbox"/> No <input type="checkbox"/> Yes (Submit analysis)			

23. Casing and Liner Record (Report all strings set in well)

Hole Size	Size/Grade	Wt. (#/ft.)	Top (MD)	Bottom (MD)	Stage Cementer Depth	No. of Sk. & Type of Cement	Slurry Vol. (BBL)	Cement Top*	Amount Pulled
12.250	9.625 H-40	32.0	0	234		150		0	
8.750	7.000 J-55	20.0	0	3303		535		200	
6.250	5.500 J-55	16.0	3247	3639		0			

24. Tubing Record

Size	Depth Set (MD)	Packer Depth (MD)	Size	Depth Set (MD)	Packer Depth (MD)	Size	Depth Set (MD)	Packer Depth (MD)
2.375	3620							

25. Producing Intervals

Formation	Top	Bottom	Perforated Interval	Size	No. Holes	Perf. Status
A) FRUITLAND COAL	3384	3556				
B)						
C)						
D)						

26. Perforation Record

Depth Interval	Amount and Type of Material
3309 TO 3641	UNDERREAMED 6.25 HOLE TO 9.5
3384 TO 3556	SURGED WELL FOR APPROX. 6 DAYS

27. Acid, Fracture, Treatment, Cement Squeeze, Etc.

Date First Produced 07/01/2004	Test Date 06/30/2004	Hours Tested 1	Test Production →	Oil BBL 0.0	Gas MCF 141.7	Water BBL 0.0	Oil Gravity Corr. API	Gas Gravity	Production Method GAS PUMPING UNIT
Choke Size 2	Tbg. Press. Flwg. SI	Csg. Press. 300.0	24 Hr. Rate →	Oil BBL 0	Gas MCF 3400	Water BBL 0	Gas:Oil Ratio	Well Status GSI	

28. Production - Interval B

Date First Produced	Test Date	Hours Tested	Test Production →	Oil BBL	Gas MCF	Water BBL	Oil Gravity Corr. API	Gas Gravity	Production Method
Choke Size	Tbg. Press. Flwg. SI	Csg. Press.	24 Hr. Rate →	Oil BBL	Gas MCF	Water BBL	Gas:Oil Ratio	Well Status	

ACCEPTED FOR RECORD

JUL 21 2004

FARMINGTON FIELD OFFICE  
BY

(See Instructions and spaces for additional data on reverse side)

ELECTRONIC SUBMISSION #32912 VERIFIED BY THE BLM WELL INFORMATION SYSTEM

\*\* BLM REVISED \*\* BLM REVISED \*\* BLM REVISED \*\* BLM REVISED \*\* BLM REVISED \*\*

## 28b. Production - Interval C

Date First Produced	Test Date	Hours Tested	Test Production →	Oil BBL	Gas MCF	Water BBL	Oil Gravity Corr. API	Gas Gravity	Production Method
Choke Size	Tbg. Press. Flwg. SI	Csg. Press.	24 Hr. Rate →	Oil BBL	Gas MCF	Water BBL	Gas:Oil Ratio	Well Status	

## 28c. Production - Interval D

Date First Produced	Test Date	Hours Tested	Test Production →	Oil BBL	Gas MCF	Water BBL	Oil Gravity Corr. API	Gas Gravity	Production Method
Choke Size	Tbg. Press. Flwg. SI	Csg. Press.	24 Hr. Rate →	Oil BBL	Gas MCF	Water BBL	Gas:Oil Ratio	Well Status	

29. Disposition of Gas(Sold, used for fuel, vented, etc.)  
VENTED

## 30. Summary of Porous Zones (Include Aquifers):

Show all important zones of porosity and contents thereof: Cored intervals and all drill-stem tests, including depth interval tested, cushion used, time tool open, flowing and shut-in pressures and recoveries.

## 31. Formation (Log) Markers

Formation	Top	Bottom	Descriptions, Contents, etc.	Name	Top
					Meas. Depth
SAN JOSE	0	977		SAN JOSE	13
NACIMIENTO	977	2339		NACIMIENTO	709
OJO ALAMO	2339	2469		OJO ALAMO	2344
				KIRTLAND	2419
				FRUITLAND	3116

## 32. Additional remarks (include plugging procedure):

This completion is a single zone producing well from the Basin Fruitland Coal. Attached are the daily summaries and schematic.

## 33. Circle enclosed attachments:

- |   |                    |               |                       |
|---|--------------------|---------------|-----------------------|
| 1. Electrical/Mechanical Logs (1 full set req'd.)     | 2. Geologic Report | 3. DST Report | 4. Directional Survey |
| 5. Sundry Notice for plugging and cement verification | 6. Core Analysis   | 7 Other:      |                       |

## 34. I hereby certify that the foregoing and attached information is complete and correct as determined from all available records (see attached instructions):

Electronic Submission #32912 Verified by the BLM Well Information System.  
For CONOCOPHILLIPS COMPANY, sent to the Farmington  
Committed to AFMSS for processing by ADRIENNE BRUMLEY on 07/21/2004 (04AXB2904SE)

Name (please print) CHRIS GUSTARTIS

Title AUTHORIZED REPRESENTATIVE

Signature (Electronic Submission)

Date 07/12/2004

Title 18 U.S.C. Section 1001 and Title 43 U.S.C. Section 1212, make it a crime for any person knowingly and willfully to make to any department or agency of the United States any false, fictitious or fraudulent statements or representations as to any matter within its jurisdiction.

**\*\* REVISED \*\* REVISED \*\* REVISED \*\* REVISED \*\* REVISED \*\* REVISED \*\* REVISED \*\* REVISED \*\***

END OF WELL SCHEMATIC

Well Name: San Juan 32-8 #223  
 API #: 30-045-32152  
 Location: 1745' FNL & 815' FWL  
Sect 10 - T31N - R8W  
San Juan County, NM  
 Elevation: 6676' GL (above MSL)  
 Drl Rig RKB: 13' above Ground Level  
 Datum: Drl Rig RKB = 13' above GL

Note - this well is equipped with rods & pump  
 7-1/16" 3M x 2-3/8" EUE 8rd Bonnet  
 11" 3M x 7-1/16" 3M Tubing Head  
 9-5/8" 8 RD x 11" 3M Casing Head

Spud: 5-May-04  
 Release Drl Rig: 5-Sep-04  
 Move In Cav Rig: 7-Jun-04  
 Release Cav Rig: 30-Jun-04

**Surface Casing** Date set: 5-May-04  
 Size 9 5/8 in  
 Set at 234 ft # Jnts: 5  
 Wt. 32.3 ppf Grade H-40  
 Hole Size 12 1/4 in Conn STC  
 Excess Cmt 150 %  
 T.O.C. SURFACE

Csg Shoe 234 ft  
 TD of 12-1/4" hole 245 ft

Notified BLM @ 21:13 hrs on 04-May-04  
 Notified NMOCD @ 21:17 hrs on 04-May-04

**Intermediate Casing** Date set: 8-May-04  
 Size 7 in 76 jts  
 Set at 3303 ft 0 pups  
 Wt. 20 ppf Grade J-55  
 Hole Size 8 3/4 in Conn STC  
 Excess Cmt 160 %  
 T.O.C. 200' +/-  
 Pup @ 2593 ft  
 Pup @ 2598 ft  
 Notified BLM @ 13:26 hrs on 07-May-04  
 Notified NMOCD @ 13:28 hrs on 07-May-04

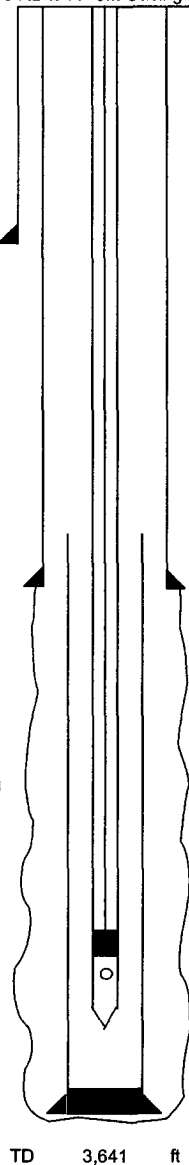
Top of Float Collar 3261 ft  
 Float Shoe 3303 ft  
 TD of 8-3/4" Hole 3309 ft

**Production Liner** Date set: 28-Jun-04  
 Size 5 1/2 in  
 Nominal Wt. 15.5 ppf  
 Grade J-55 Connections: LTC  
 # Jnts: 9  
 Hole Size 6.25 / 9.5 inches  
 Underreamed 6-1/4" hole to 9.5" from 3309' to 3641'  
 Top of Liner 3247 ft  
 PBDT 3641 ft  
 Bottom of Liner 3639 ft

☒ New  
☐ Used

☒ New  
☐ Used

☒ New  
☐ Used



**Surface Cement**

Date cmt'd: 6-May-04  
 Lead : 150 sx Class G Cement  
 + 2% S001 Calcium Chloride  
 + 0.25 lb/sx D029 Cellophane Flakes  
1.16 cuft/sx, 174 cuft slurry at 15.8 ppg  
 Displacement: 15.3 bbls fresh wtr  
 Bumped Plug at: 01:34 hrs w/ 300 psi  
 Final Circ Press: 50 psi @ 0.5 bpm  
 Returns during job: YES  
 CMT Returns to surface: 8 bbls (38.7 sx)  
 Floats Held: No floats used  
 W.O.C. for 6.00 hrs (plug bump to start NU BOP)  
 W.O.C. for 10.50 hrs (plug bump to test csg)

**Intermediate Cement**

Date cmt'd: 8-May-04  
 Lead : 435 sx Class G Cement  
 + 3% D079 Extender  
 + 0.25 lb/sx D029 Cellophane Flakes  
 + 0.2% D046 Antifoam  
 + 0.05 gal/sx D047 Antifoam  
2.61cuft/sx, 1135.4 cuft slurry at 11.7 ppg  
 Tail : 100 sx 50/50 POZ : Class G cement  
 + 2% D020 Bentonite  
 + 2% BWOC S001 Calcium Chloride  
 + 5 lb/sx D024 Gilsomite  
 + 0.25 lb/sx D029 Cellophane Flakes  
 + 0.2% D046 Antifoam  
1.27 cuft/sx, 127 cuft slurry at 13.5 ppg  
 Displacement: See Comments  
 Bumped Plug at: 23:55 hrs w/ 1500 psi  
 Final Circ Press: 650 psi at 2 bpm  
 Returns during job: YES  
 CMT Returns to surface: NONE  
 Floats Held: ☒ Yes ☐ No

**UNCEMENTED LINER**

Schematic prepared by:  
 Melea Mechler, Development Engineer  
 01-July-2004

This well was cavitated.

**COMMENTS:**

9-5/8" Surf:	No float equipment was run. Ran a guide shoe and an aluminum baffle plate 1 jt above the guide shoe. Displaced top wiper plug with water. Shut in casing head and WOC before backing out landing jt. CENTRALIZERS @ 224', 146', 103' & 59'. Total: 4
7" Intermediate	DISPLACED W/20 BBLs. FRESH WATER & 112.1 BBLs. 8.4 PPG SLIGHTLY POLYMERIZED DRILL WATER CENTRALIZERS @ 3293', 3218', 3131', 3045', 2958', 2871', 214', 83', 39' TURBOLIZERS @ 2422', 2379', 2335' Total: 9
5.5" Liner	Ran and set the liner w/ TIW H-Latch liner assembly (no liner hanger) Total: 3
Perforations	Perforated 5-1/2" liner with guns on E-line at 4 spf, 0.75" diameter, 120 degree phased holes Perf. Intervals: 3384'-3388', 3410'-3417', 3427'-3430', 3432'-3435', 3439'-3442', 3453'-3456', 3478'-3483', 3485'-3490' 3492'-3495', 3528'-3538', 3541'-3556'. Total 244 holes
Tubing	2-7/8" Orange Peeled Mud Anchor 30.65' long with eight each 0.25" x 8" slots just below the upset, 2-7/8" x 2-3/8" EUE 8rd XO collar, 2-3/8" OD (1.78" ID) F-Nipple, and 110 jts 2-3/8" 4.7# J-55 EUE 8rd tubing Bottom of Mud Anchor at 3620'. Top of F-Nipple at 3587' MD RKB.
Pump & Rods	12" long strainer attached below 2" x 1-1/2" x 12' RWAC-Z insert pump, 1 ea 4' x 3/4" pony rod on top of pump, 143 each 3/4" rods, spaced out with 1 ea 2' x 3/4" OD pony rods & 1 ea 1-1/4" OD x 22' polished rod Set pump in F-Nipple at 3587' MD RKB

## Operations Summary Report

Legal Well Name: SAN JUAN 32-8 UNIT 223A  
 Common Well Name: SAN JUAN 32-8 UNIT 223A  
 Event Name: COMPLETION  
 Contractor Name: KEY ENERGY SVCS  
 Rig Name: KEY 18

Spud Date: 5/5/2004  
 Start: 4/20/2004  
 End:  
 Rig Release: 6/30/2004  
 Group:  
 Rig Number: 18

Date	From - To	Hours	Code	Sub Code	Phase	Description of Operations
6/8/2004	07:00 - 07:30	0.50	MOVE	SFTY	DEMOB	SAFETY MEETING @ START OF OPERATIONS
	07:30 - 09:30	2.00	MOVE	DMOB	DEMOB	LOADING OUT EQUIPMENT ON FLOATS
	09:30 - 18:30	9.00	MOVE	MOB	MIRU	MIRU KEY RIG # 18 & EQUIPMENT
6/9/2004	18:30 - 19:00	0.50	MOVE	RURD	MIRU	SECURED LOCATION & S.D.O.N.
	06:00 - 07:00	1.00	MOVE	SFTY	MIRU	SAFETY MEETING IN TOWN W / ALL PERSONNEL
	07:00 - 08:00	1.00	MOVE	OTHR	MIRU	TRAVEL TIME
6/10/2004	08:00 - 08:15	0.25	MOVE	SFTY	MIRU	SAFETY MEETING @ START OF OPERATIONS
	08:15 - 13:00	4.75	DRILL	RURD	PROD1	NU BOPS, HCR VALVES, CHOKE MANIFOLD, BLOOIE LINES, RIG FLOOR & AIR LINES
	13:00 - 14:45	1.75	DRILL	SFEQ	PROD1	TEST 7" CSG & BLIND RAMS TO 250# 3 MINS & 1800# 30 MINS FOR STATE INTEGRITY TEST = GOOD TEST = TEST PIPE RAMS, HCR VALVES, CHOKE MANIFOLD TO 250# 3 MINS & 1800# 10 MINS = GOOD TEST = ALL TEST CHARTED
	14:45 - 17:30	2.75	DRILL	PULD	PROD1	GIH PU 6 1/4" HUGHES RERUN STX-30 NO # 5030118 BIT, BIT SUB, 12-3 1/2" DC'S, 1-2 7/8" DP, 1-2 7/8" 1.81" FN & DP TAG @ 3255'
	17:30 - 18:30	1.00	DRILL	RURD	PROD1	TIE BACK ON ONE LINE = PU & MU POWER SWIVEL
	18:30 - 19:00	0.50	DRILL	OTHR	PROD1	SECURED WELL & LOCATION = S.D.O.N.
	07:00 - 07:30	0.50	DRILL	SFTY	COMPZN	SAFETY MEETING @ START OF OPERATIONS
	07:30 - 09:00	1.50	DRILL	CIRC	COMPZN	RIG & EQUIPMENT INSPECTION BY COPC SAFETY REP. = UNLOAD HOLE W / AIR ASSIST
	09:00 - 10:00	1.00	DRILL	MILL	COMPZN	DRILL OUT CMT, 7" FLOAT COLLAR, CMT & 7" SHOE TO INTERMEDIATE TD @ 3309'
	10:00 - 21:00	11.00	DRILL	DRLG	COMPZN	DRILLING AHEAD W / 6 1/4" BIT FROM 3309'-3641' TD W / 900 SCFM AIR, 6 BPH MIST, 1 GAL OF 450 FOAMER, 1/4 GAL OF CORROSION INHIBITOR, 350# DP PRESSURE, 6 POINTS ON BIT & 70 RPMS = RETURNS TO SURFACE, MED COAL, SHALE & SANDSTONE
	21:00 - 22:00	1.00	EVALFM	CIRC	COMPZN	CIRC W / AIR ASSIST & CORRELATE W / MUD LOGGERS = NET COAL INTERVALS AS FOLLOWS = STARTED W / 300 GAS UNITS AS BACKGROUND GAS 3385'-89' = 4 FT = 477 GAS UNIT'S 3411'-18' = 7 FT = 465 GAS UNIT'S 3428'-30' = 2 FT = 713 GAS UNIT'S 3432'-34' = 2 FT = 713 GAS UNIT'S 3481'-95' = 14 FT = 750 GAS UNIT'S 3531'-39' = 8 FT = 760 GAS UNIT'S 3542'-57' = 15 FT = 760 GAS UNIT'S TOTAL NET COAL = 52 FT CARRIED 750 BACKGROUND GAS
	22:00 - 02:30	4.50	EVALFM	OTHR	COMPZN	R&R C/O T/3641' TD W / 900 SCFM AIR, 6 BPH MIST, 1 GAL OF 450 FOAMER, 1/4 GAL OF CORROSION INHIBITOR PER 10 BBLS OF FLUID PUMPED, 350# ON CHART @ COMPRESSIORS & 250# ON GAGE @ RIG FLOOR, 65 RPMS, 1 TO 2 POINT'S ON BIT = RETURNS TO SURFACE, MED TO LIGHT COAL & FINES W / 1.5 BPH WATER GAIN = 5 DOWN TO 1 BUCKETS PER HOUR OFF SAMPLE CATCHER = 95% TO 100% COAL
	02:30 - 03:00	0.50	EVALFM	TRIP	COMPZN	PUH INSIDE 7" CSG W / BHA
	03:00 - 04:00	1.00	EVALFM	PRDT	COMPZN	2" OPEN FLOW TEST W / PITOT TUBE TIME = MANIFOLD = PITOT = MCFD = WATER 15 MIN'S = 8.0# = 2.0# = 869 = DRY 30 MIN'S = 9.0# = 2.25# = 900 = LIGHT MIST 45 MIN'S = 10.0# = 2.50# = 970 = MED MIST 1 HR = 10.0# = 2.50# = 970 = MED MIST
	04:00 - 05:30	1.50	EVALFM	SIPB	COMPZN	SHUT IN TO BUILD UP PRESSURE

## Operations Summary Report

Legal Well Name: SAN JUAN 32-8 UNIT 223A

Common Well Name: SAN JUAN 32-8 UNIT 223A

Event Name: COMPLETION

Contractor Name: KEY ENERGY SVCS

Rig Name: KEY 18

Start: 4/20/2004

Rig Release: 6/30/2004

Rig Number: 18

Spud Date: 5/5/2004

End:

Group:

Date	From - To	Hours	Code	Sub Code	Phase	Description of Operations
6/10/2004	04:00 - 05:30	1.50	EVALFM	SIPB	COMPZN	TIME = PRESSURE ISIP = 40# 15 MINS = 180# 30 MINS = 240# 45 MINS = 290# 1 HR = 320# 1:15 MINS = 345# 1:30 MINS = 350#
	05:30 - 06:00	0.50	EVALFM	RURD	COMPZN	NATURAL SURGE WELL = HANG BACK POWER SWIVEL & TIE BACK ON TWO LINES
6/11/2004	06:00 - 07:30	1.50	EVALFM	TRIP	COMPZN	SAFETY MEETING @ START OF OPERATIONS = COOH W / DP, DC'S & BHA
	07:30 - 08:00	0.50	EVALFM	RURD	COMPZN	PU & RU BAKER 9 1/2" UNDERREAMER
	08:00 - 09:30	1.50	EVALFM	TRIP	COMPZN	RIH W / 9 1/2" UNDERREAMER, DC'S & DP T/3300'
	09:30 - 10:00	0.50	EVALFM	RURD	COMPZN	TIE BACK ON ONE LINE & PU POWER SWIVEL
	10:00 - 16:00	6.00	EVALFM	REAM	COMPZN	UNDERREAM 6 1/4" HOLE TO 9 1/2" HOLE F/3309'-T/3641' W / 1600 SCFM AIR, 8 TO 10 BPH MIST, 1 GAL OF 450 FOAMER, 1/4 GAL OF CORROSION INHIBITOR PER 10 BBLs OF FLUID PUMPED, 750# DP PRESSURE, 75 RPMS = RETURNS TO SURFACE, MED COAL W / 1 TO 2 BPH WATER GAIN
	16:00 - 16:30	0.50	EVALFM	CIRC	COMPZN	CIRC BOTTOMS UP TO CLEAN WELLBORE
	16:30 - 17:00	0.50	EVALFM	TRIP	COMPZN	PUH INSIDE 7" CSG W / BHA
	17:00 - 17:30	0.50	EVALFM	RURD	COMPZN	HANG BACK POWER SWIVEL & TIE BACK ON TWO LINES
	17:30 - 19:00	1.50	EVALFM	TRIP	COMPZN	COOH W / DP, DC'S & BHA
						2" OPEN FLOW TEST W / PITOT TUBE
						TIME = MANIFOLD = PITOT = MCFD = WATER
						15 MIN'S = 7.0# = 1.750# = 816 = LIGHT MIST
						30 MIN'S = 8.0# = 2.000# = 869 = MED MIST
						45 MIN'S = 8.5# = 2.125# = 913 = MED MIST
						1 HR = 8.5# = 2.125# = 913 = MED MIST
	19:00 - 19:30	0.50	EVALFM	RURD	COMPZN	SAFETY MEETING @ START OF OPERATIONS = RD BAKER UNDERREAMER
	19:30 - 21:00	1.50	EVALFM	TRIP	COMPZN	RIH W / 6 1/4" BIT, DC'S & DP T/3300'
	21:00 - 21:30	0.50	EVALFM	RURD	COMPZN	TIE BACK ON ONE LINE & PU POWER SWIVEL
	21:30 - 22:30	1.00	EVALFM	SIPB	COMPZN	SHUT IN BUILD UP PRESSURE
						TIME = PRESSURE
						ISIP = 38#
						15 MIN'S = 170#
						30 MIN'S = 220#
						45 MIN'S = 290#
						1 HR = 315#
						1:15 MIN'S = 330#
						1:30 MIN'S = 335#
	22:30 - 04:00	5.50	EVALFM	OTHR	COMPZN	SURGE # 1 335# NATURAL FORMATION PRESSURE = SURGE # 2 - # 3 - # 4 @ 1100# TO 1300# DP PRESSURE W / BACKSIDE PRESSURE F/1350#-T/1400# = HYDRAULIC SURGE'S W / 3 GAL'S OF FOAMER AHEAD, 1 BPM WATER & 1800 SCFM AIR, 6 BPH MIST, 1/4 GAL OF CORROSION INHIBITOR, 1 GAL OF 450 FOAMER, CUTTING AIR 3 TIME'S TO DROP DP PRESSURE = RETURN'S TO SURFACE, FOAM WATER ON SURGE'S # 1, 2 & 3 - BUT HEAVY BLACK FOAM & COAL ON SURGE # 4

**CONOCOPHILLIPS CO**  
**Operations Summary Report**

Page 3 of 11

Legal Well Name: SAN JUAN 32-8 UNIT 223A  
Common Well Name: SAN JUAN 32-8 UNIT 223A  
Event Name: COMPLETION  
Contractor Name: KEY ENERGY SVCS  
Rig Name: KEY 18

Start: 4/20/2004  
Rig Release: 6/30/2004  
Rig Number: 18  
Spud Date: 5/5/2004  
End:  
Group:

Date	From - To	Hours	Code	Sub Code	Phase	Description of Operations
6/11/2004	04:00 - 04:30	0.50	EVALFM	TRIP	COMPZN	RIH FROM 7" CSG & TAG @ 3490' R&R C/O F/3490'-T/3499' W / 900 SCFM AIR, 1 GAL OF 450 FOAMER, 1/4 GAL OF CORROSION INHIBITOR, 6 BPH MIST, 250# DP PRESSURE @ RIG FLOOR, 75 RPMS, 2 TO 5 POINTS OF BIT = RETURNS TO SURFACE, HEAVY TO MED COAL & FINES W / 1.5 BPH WATER GAIN = 12 DOWN TO 4 BUCKETS PER HOUR OFF SAMPLE CATCHER = 95% TO 100% COAL
	04:30 - 06:00	1.50	EVALFM	OTHR	COMPZN	
6/12/2004	06:00 - 06:00	24.00	EVALFM	OTHR	COMPZN	SAFETY MEETING @ START OF OPERATIONS = R&R C/O F/3499'-T/3562' W / 900 SCFM AIR, 6 BPH MIST, 1 GAL OF 450 FOAMER, 1/4 GAL OF CORROSION INHIBITOR PER 10 BBLS OF FLUID PUMPED, 65 TO 75 RPMS, 1 TO 4 POINTS ON BIT, 300# ON CHART @ COMPRESSORS & 200# ON GAGE @ RIG FLOOR = RETURN TO SURFACE, HEAVY TO MED COAL & FINES W / 2 BPH WATER GAIN = 12 DOWN TO 4 BUCKETS PER HOUR OFF SAMPLE CATCHER = 95% TO 100% COAL & FINES
6/13/2004	06:00 - 11:30	5.50	EVALFM	OTHR	COMPZN	R&R C/O T/3562' W / 900 SCFM AIR, 6 BPH MIST, 1 GAL OF 450 FOAMER, 1/4 GAL OF CORROSION PER 10 BBLS OF FLUID PUMPED, 65 TO 75 RPMS, 1 TO 3 POINTS ON BIT, 300# ON CHART @ COMPRESSORS & 200# ON GAGE @ RIG FLOOR = RETURNS TO SURFACE, MED TO LIGHT COAL & FINES W / 2 BPH WATER GAIN = 4 DOWN TO 1 BUCKETS PER HOUR OFF SAMPLE CATCHER = 95% TO 100% COAL & FINES
	11:30 - 12:00	0.50	EVALFM	TRIP	COMPZN	PUH INSIDE 7" CSG W / BHA
	12:00 - 18:00	6.00	EVALFM	OTHR	COMPZN	SURGS # 5 - # 6 - # 7 @ 1250# TO 1350# DP PRESSURE & 1075# TO 1350# CSG PRESSURE - HYDRAULIC SURGE'S W / 3 GALS OF 450 FOAMER AHEAD OF EACH SURGE, 1 BPM WATER & 1800 SCFM AIR, 6 BPH MIST, 1 GAL OF 450 FOAMER, 1/4 GAL OF CORROSION INHIBITOR PER 10 BBLS OF FLUID PUMPER, CUTTING AIR OFF 3 TIMES TO DROP DP PRESSURE, RELEASED SURGES & RETURN TO SURFACE - SURGE #5 CLEAR FOAM WATER, SURGE # 6 COLORED WATER, SURGE # 7 HEAVY COLORED WATER, MED COAL & FINES
	18:00 - 18:30	0.50	EVALFM	TRIP	COMPZN	RIH FROM 7" CSG & TAG @ 3420'
	18:30 - 20:30	2.00	EVALFM	OTHR	COMPZN	R&R C/O T/3436' W / 900 SCFM AIR, 6 BPH MIST, 1 GAL OF 450 FOAMER, 1/4 GAL OF CORROSION INHIBITOR PER 10 BBLS OF FLUID PUMPER, 300# ON CHART @ COMPRESSORS & 200# ON GAGE @ RIG FLOOR, 75 RPMS & 3 TO 6 POIN'S ON BIT = RETURNS TO SURFACE, HEAVY COAL & FINES W / 2 TO 3 BPH WATER GAIN = 10 TO 14 BUCKETS PER HOUR OFF SAMPLE CATCHER = 95% TO 100% COAL = ATTENTION WELL SLOUGHING HEAVY COAL WENT TO 1800 SCFM AIR, 8 TO 10 BPH MIST TOO LATE WELLBORE GETTING TIGHT & HIGH DP PRESSURE
	20:30 - 22:30	2.00	EVALFM	TRIP	COMPZN	WORKING TIGHT PIPE UP HOLE INSIDE 7" CSG & CIRC 7" CSG CLEAN
	22:30 - 23:00	0.50	EVALFM	TRIP	COMPZN	RIH FROM 7" CSG & TAG @ 3400'
	23:00 - 06:00	7.00	EVALFM	OTHR	COMPZN	R&R C/O F/3380'-T/3405' W / 1800 TO 1500 SCFM AIR, 8 TO 6 BPH MIST, 1 GAL OF 450 FOAMER, 1/4 GAL OF CORROSION INHIBITOR PER 10 BBLS OF FLUID PUMPED, 450# ON CHART @ COMPRESSORS & 350# ON GAGE @ RIG FLOOR, 75 TO 65 RPMS, 6 TO 3 POINTS ON BIT = RETURNS TO SURFACE, HEAVY TO MED COAL & FINES W / 3 BPH WATER GAIN = 12 DOWN TO 5 BUCKETS PER HOUR OFF SAMPLE CATCHER = 95% TO 100%

**CONOCOPHILLIPS CO**  
**Operations Summary Report**

Page 4 of 11

Legal Well Name: SAN JUAN 32-8 UNIT 223A  
Common Well Name: SAN JUAN 32-8 UNIT 223A  
Event Name: COMPLETION  
Contractor Name: KEY ENERGY SVCS  
Rig Name: KEY 18

Start: 4/20/2004  
Rig Release: 6/30/2004  
Rig Number: 18  
Spud Date: 5/5/2004  
End:  
Group:

Date	From - To	Hours	Code	Sub Code	Phase	Description of Operations
6/13/2004	23:00 - 06:00	7.00	EVALFM	OTHR	COMPZN	COAL & FINES
6/14/2004	06:00 - 06:00	24.00	EVALFM	OTHR	COMPZN	R&R C/O F/3405'-T/3530' W / 1500 TO 900 SCFM AIR, 10 TO 6 BPH MIST, 1 GAL OF 450 FOAMER, 1/4 GAL OF CORROSION INHIBITOR PER 10 BBLS OF FLUID PUMPED, 450# TO 300# ON CHART @ COMPRESSORS & 350# TO 250# ON GAGE @ RIG FLOOR, 75 TO 65 RPMS, 6 TO 1 POINTS ON BIT = RETURNS TO SURFACE, HEAVY TO MED COAL & FINES W / 2 TO 4 BPH WATER GAIN = 10 DOWN TO 4 BUCKET'S PER HOUR OFF SAMPLE CATCHER = 95% TO 100% COAL
6/15/2004	06:00 - 06:00	24.00	EVALFM	OTHR	COMPZN	R&R C/O F/3530'-T/3562' W / 1500 TO 900 SCFM AIR, 10 TO 6 BPH MIST, 1 GAL OF 450 FOAMER, 1/4 GAL OF CORROSION INHIBITOR PER 10 BBLS OF FLUID PUMPED, 450# TO 300# ON CHART @ COMPRESSORS & 350# TO 250# ON GAGE @ RIG FLOOR, 75 TO 65 RPMS, 5 TO 1 POINTS ON BIT = RETURN TO SURFACE, HEAVY TO LIGHT COAL & FINE W / 2 TO 4 BPH WATER GAIN = 12 DOWN TO 2 BUCKETS PER HOUR OFF SAMPLE CATCHER = 95% TO 100% COAL
6/16/2004	06:00 - 06:00	24.00	EVALFM	OTHR	COMPZN	R&R C/O F/3530'-T/3562' W / 900 SCFM AIR, 6 BPH MIST, 1 GAL OF 450 FOAMER, 1/4 GAL OF CORROSION INHIBITOR PER 10 BBLS OF FLUID PUMPED, 300# ON CHART @ COMPRESSORS & 250# ON GAGE @ RIG FLOOR, 75 TO 65 RPMS, 3 TO 1 POINTS ON BIT = RETURN TO SURFACE, MED COAL & FINE W / 2 TO 4 BPH WATER GAIN = 4 TO 2 BUCKETS PER HOUR OFF SAMPLE CATCHER = 95% TO 100% COAL
6/17/2004	06:00 - 08:00	2.00	EVALFM	OTHR	COMPZN	SAFETY MEETING @ START OF ALL OPERATIONS W / JSA REVIEWS = R&R C/O T/3562' W / 900 SCFM AIR, 6 BPH MIST, 1 GAL OF 450 FOAMER, 1/4 GAL OF CORROSION INHIBITOR PER 10 BBLS OF FLUID PUMPED, 300# ON CHART @ COMPRESSORS & 200# ON GAGE @ RIG FLOOR, 65 TO 75 RPMS, 1 TO 3 POINTS ON BIT = RETURN TO SURFACE, LIGHT COAL & FINES W / 3 BPH WATER GAIN = 1.5 BUCKETS PER HOUR OFF SAMPLE CATCHER = 95% TO 100% COAL = NOT ABLE TO DRY UP WELL FOR TEST OR STOP COAL RUNNING
	08:00 - 08:30	0.50	EVALFM	TRIP	COMPZN	PUH INSIDE 7" CSG W / BHA
	08:30 - 09:30	1.00	EVALFM	PRDT	COMPZN	2" OPEN FLOW TEST W / PITOT TUBE TIME = MANIFOLD = PITOT = MCFD = WATER 15 MIN'S = 32# = 8.00# = 1756 = LIGHT MIST 30 MIN'S = 33# = 8.25# = 1793 = MED MIST 45 MIN'S = 34# = 8.50# = 1808 = MED MIST 1 HR = 34# = 8.50# = 1808 = HEAVY MIST
	09:30 - 11:30	2.00	EVALFM	SIPB	COMPZN	SHUT IN TO BUILD PRESSURE TIME = PRESSURE ISIP = 45# 15 MIN'S = 175# 30 MIN'S = 255# 45 MIN'S = 310# 1 HR = 320# 1:15 MIN'S = 325# 1:30 MIN'S = 330# 1:45 MIN'S = 335# 2 HR'S = 339#
	11:30 - 21:30	10.00	EVALFM	OTHR	COMPZN	SAFETY MEETING @ START OF ALL OPERATIONS W / JSA REVIEWS = SURGES # 8 THRU # 17 @ 300# NATURAL

**CONOCOPHILLIPS CO**  
**Operations Summary Report**

Page 5 of 11

Legal Well Name: SAN JUAN 32-8 UNIT 223A  
Common Well Name: SAN JUAN 32-8 UNIT 223A  
Event Name: COMPLETION  
Contractor Name: KEY ENERGY SVCS  
Rig Name: KEY 18

Start: 4/20/2004  
Rig Release: 6/30/2004  
Rig Number: 18  
Spud Date: 5/5/2004  
End:  
Group:

Date	From - To	Hours	Code	Sub Code	Phase	Description of Operations
6/17/2004	11:30 - 21:30	10.00	EVALFM	OTHR	COMPZN	FORMATION PRESSURE = RETURNS TO SURFACE, NATURAL GAS - LIGHT MIST - TRACE OF COAL DUST
	21:30 - 22:00	0.50	EVALFM	TRIP	COMPZN	RIH FROM 7" CSG & TAG @ 3520'
	22:00 - 06:00	8.00	EVALFM	OTHR	COMPZN	R&R C/O F/3520'-T/3562' W / 900 SCFM AIR, 6 BPH MIST, 1 GAL OF 450 FOAMER, 1/4 GAL OF CORROSION INHIBITOR PER 10 BBL OF FLUID PUMPED, 300# ON CHART @ COMPRESSORS & 200# ON GAGE @ RIG FLOOR, 65 TO 75 RPMS & 1 TO 3 POINTS ON BIT = RETURN TO SURFACE, LIGHT COAL & FINES W / 3 BPH WATER GAIN = 2 BUCKETS PER HOUR OFF SAMPLE CATCHER = 95% TO 100% COAL
6/18/2004	06:00 - 07:30	1.50	EVALFM	OTHR	COMPZN	SAFETY MEETING @ START OF ALL OPERATIONS W / JSA REVIEWS = R&R C/O T/3562' W / 900 SCFM AIR, 6 BPH MIST, 1 GAL OF 450 FOAMER, 1/4 GAL OF CORROSION INHIBITOR PER 10 BBL OF FLUID PUMPED, 300# ON CHART @ COMPRESSORS & 200# ON GAGE @ RIG FLOOR, 65 TO 75 RPMS, 1 TO 2 POINTS ON BIT = RETURN TO SURFACE, LIGHT COAL & FINE W / 2 TO 3 BPH WATER GAIN = 1.0 TO 1.5 BUCKETS PER HOUR OFF SAMPLE CATCHER = 95% TO 100% COAL = NOT ABLE TO DRY UP WELL FOR TEST OR STOP COAL RUNNING
	07:30 - 08:00	0.50	EVALFM	TRIP	COMPZN	PUH INSIDE 7" CSG W / BHA
	08:00 - 09:00	1.00	EVALFM	PRDT	COMPZN	2" OPEN FLOW TEST W / PITOT TUBE TIME = MANIFOLD = PITOT = MCFLD = WATER 15 MIN'S = 36# = 9.00# = 1865 = MED MIST 30 MIN'S = 38# = 9.50# = 1917 = HEAVY MIST 45 MIN'S = 38# = 9.50# = 1808 = HEAVY MIST 1 HR = 38# = 9.50# = 1808 = HEAVY MIST
	09:00 - 11:00	2.00	EVALFM	SIPB	COMPZN	LAST 3 GAGE'S W / 1/4" STREAM OF WATER SHUT IN TO BUILD PRESSURE TIME = PRESSURE ISIP = 50# 15 MIN'S = 225# 30 MIN'S = 285# 45 MIN'S = 300# 1 HR = 320# 1:15 MIN'S = 325# 1:30 MIN'S = 330# 1:45 MIN'S = 335# 2 HR'S = 340#
	11:00 - 16:30	5.50	EVALFM	OTHR	COMPZN	SAFETY MEETING @ START OF ALL OPERATION'S W / JSA REVIEWS = SURGES # 18 - # 19 - # 20 HYDRAULIC SURGES @ 1300# TO 1450# DP PRESSURE W / 1250# TO 1450# BACKSIDE PRESSURE = 3 GALS OF 450 FOAMER AHEAD W / 1 BPM WATER, 1800 SCFM AIR, 6 BPH MIST, 1 GAL OF 450 FOAMER, 1/4 GAL OF CORROSION INHIBITOR PER 10 BBL OF FLUID PUMPED, CUTTING OF AIR 3 TIME'S TO DROP DP PRESSURE = RETURN TO SURFACE, SURGE # 18 CLEAR FOAMER WATER = SURGE # 19 COLORED WATER W / TRACE OF COAL = SURGE # 20 HEAVY BACK FOAM W / MED COAL & FINE
	16:30 - 17:00	0.50	EVALFM	TRIP	COMPZN	RIH FROM 7" CSG & TAG @ 3419'
	17:00 - 06:00	13.00	EVALFM	OTHR	COMPZN	R&R C/O F/3419'-T/3499' W / 900 SCFM AIR, 6 BPH MIST, 1 GAL OF 450 FOAMER, 1/4 GAL OF CORROSION INHIBITOR PER 10 BBL OF FLUID PUMPED, 300# ON CHART @ COMPRESSORS & 200# ON GAGE @ RIG FLOOR, 65 TO 75 RPMS & 1 TO 4 POINTS ON BIT =



## Operations Summary Report

Legal Well Name: SAN JUAN 32-8 UNIT 223A  
 Common Well Name: SAN JUAN 32-8 UNIT 223A  
 Event Name: COMPLETION  
 Contractor Name: KEY ENERGY SVCS  
 Rig Name: KEY 18

Start: 4/20/2004  
 Rig Release: 6/30/2004  
 Rig Number: 18  
 Spud Date: 5/5/2004  
 End:  
 Group:

Date	From - To	Hours	Code	Sub Code	Phase	Description of Operations
6/18/2004	17:00 - 06:00	13.00	EVALFM	OTHR	COMPZN	RETURN TO SURFACE, MED TO LIGHT COAL & FINE W / 3 BPH WATER GAIN = 5 DWON TO 2 BUCKETS PER HOUR OFF SAMPLE CATCHER = 95% TO 100% COAL
6/19/2004	06:00 - 08:00	2.00	EVALFM	OTHR	COMPZN	SAFETY MEETING @ START OF ALL OPERATIONS W / JSA REVIEWS = R&R C/O T/3499' W / 900 SCFM AIR, 6 BPH MIST, 1 GAL OF 450 FOAMER, 1/4 GAL OF CORROSION INHIBITOR PER 10 BBLS OF FLUID PUMPED, 300# ON CHART @ COMPRESSORS & 200# ON GAGE @ RIG FLOOR, 65 TO 75 RPMS, 3 TO 5 POINTS ON BIT = RETURN TO SURFACE, MED COAL & FINE W / 2 TO 3 BPH WATER GAIN = 4 BUCKETS PER HOUR OFF SAMPLE CATCHER = 95% TO 100% COAL
	08:00 - 08:30	0.50	EVALFM	TRIP	COMPZN	PUH INSIDE 7" CSG W / BHA
	08:30 - 09:00	0.50	EVALFM	SFTY	COMPZN	BOP & FIRE DRILL
	09:00 - 17:00	8.00	EVALFM	OTHR	COMPZN	SAFETY MEETING @ START OF ALL OPERATIONS W / JSA REVIEWS = SURGES # 21 THRU # 24 HYDRAULIC SURGES @ 1300# TO 1450# DP PRESSURE W / 1250# TO 1450# BACKSIDE PRESSURE = 3 GAL OF 450 FOAMER AHEAD W / 1 BPM WATER, 1800 SCFM AIR, 6 BPH MIST, 1 GAL OF 450 FOAMER, 1/4 GAL OF CORROSION INHIBITOR PER 10 BBLS OF FLUID PUMPED, CUTTING OF AIR 3 TIMES TO DROP DP PRESSURE = RETURN TO SURFACE, SURGE # 21 CLEAR FOAM WATER = SURGE # 22 CLEAR FOAMER WATER = SURGE # 23 COLORED FOAM WATER = SURGE # 24 BACK FOAM WATER
	17:00 - 17:30	0.50	EVALFM	TRIP	COMPZN	RIH FROM 7" CSG T/3436'
	17:30 - 18:00	0.50	EVALFM	TRIP	COMPZN	PUH INSIDE 7" CSG W / BHA
	18:00 - 00:00	6.00	EVALFM	OTHR	COMPZN	SAFETY MEETING @ START OF ALL OPERATIONS = SURGES # 25 THRU # 27 HYDRAULIC W / 3 GAL OF 450 FOAMER AHEAD & 1 BPM WATER W / 1200# TO 1400# DP PRESSURE & 1100# TO 1300# BACKSIDE PRESSURE, 1800 SCFM AIR, 6 BPH MIST, 1 GAL OF 450 FOAMER, 1/4 GAL OF CORROSION INHIBITOR PER 10 BBL OF FLUID PUMPED, CUTTING OF AIR 3 TIMES TO DROP DP PRESSURE = RETURNS TO SURFACE = SURGE # 25 BACK FOAM WATER = SURGE # 26 BACK FOAM WATER = SURGE # 27 HEAVY BLACK FOAM WATER W / MED COAL & FINE
	00:00 - 00:30	0.50	EVALFM	TRIP	COMPZN	RIH FROM 7" CSG & TAG @ 3380'
	00:30 - 06:00	5.50	EVALFM	OTHR	COMPZN	R&R C/O F/3380'-T/3405' W / 900 SCFM AIR, 6 BPH MIST, 1 GAL OF 450 FOAMER, 1/4 GAL OF CORROSION INHIBITOR PER 10 BBLS OF FLUID PUMPED, 350# ON CHART @ COMPRESSORS & 250# ON GAGE @ RIG FLOOR, 65 TO 75 RPM'S & 1 TO 4 POINTS ON BIT = RETURNS TO SURFACE, HEAVY TO MED COAL & FINES W / 3 BPH WATER GAIN = 10 DOWN TO 4 BUCKETS PER HOUR OFF SAMPLE CATCHER = 95% TO 100% COAL
6/20/2004	06:00 - 08:00	2.00	EVALFM	OTHR	COMPZN	SAFETY MEETING @ START OF ALL OPERATIONS W / JSA REVIEWS = R&R C/O T/3436' W / 900 SCFM AIR, 6 BPH MIST, 1 GAL OF 450 FOAMER, 1/4 GAL OF CORROSION INHIBITOR PER 10 BBLS OF FLUID PUMPED, 300# ON CHART @ COMPRESSORS & 200# ON GAGE @ RIG FLOOR, 65 TO 75 RPMS, 3 TO 5 POINTS ON BIT = RETURN TO SURFACE, LIGHT COAL & FINE W / 2 TO 3 BPH WATER GAIN = 1.5 BUCKET PER HOUR OFF SAMPLE CATCHER = 95% TO 100% COAL
	08:00 - 08:30	0.50	EVALFM	TRIP	COMPZN	PUH INSIDE 7" CSG W / BHA
	08:30 - 15:00	6.50	EVALFM	OTHR	COMPZN	SAFETY MEETING @ START OF ALL OPERATIONS W / JSA REVIEWS = SURGES # 28 THRU # 30 HYDRAULIC SURGES @

## Operations Summary Report

Legal Well Name: SAN JUAN 32-8 UNIT 223A  
 Common Well Name: SAN JUAN 32-8 UNIT 223A  
 Event Name: COMPLETION  
 Contractor Name: KEY ENERGY SVCS  
 Rig Name: KEY 18

Start: 4/20/2004  
 Rig Release: 6/30/2004  
 Rig Number: 18  
 Spud Date: 5/5/2004  
 End:  
 Group:

Date	From - To	Hours	Code	Sub Code	Phase	Description of Operations
6/20/2004	08:30 - 15:00	6.50	EVALFM	OTHR	COMPZN	1300# TO 1450# DP PRESSURE W / 1250# TO 1450# BACKSIDE PRESSURE = 3 GALS OF 450 FOAMER AHEAD W / 1 BPM WATER, 1800 SCFM AIR, 6 BPH MIST, 1 GAL OF 450 FOAMER, 1/4 GAL OF CORROSION INHIBITOR PER 10 BBLS OF FLUID PUMPED, CUTTING OF AIR 3 TIMES TO DROP DP PRESSURE = RETURN TO SURFACE, SURGE # 28 CLEAR FOAM WATER = SURGE # 29 CLEAR FOAMER WATER = SURGE # 30 COLORED FOAM WATER & LIGHT COAL
	15:00 - 15:30	0.50	EVALFM	TRIP	COMPZN	RIH FROM 7" CSG TAG @ 3221'
	15:30 - 18:00	2.50			COMPZN	R&R C/O F/3221'-T/3436' W / 900 SCFM AIR, 6 BPH MIST, 1 GAL OF 450 FOAMER, 1/4 GAL OF CORROSION INHIBITOR PER 10 BBLS OF FLUID PUMPED, 300# ON CHART @ COMPRESSORS & 200# ON GAGE @ RIG FLOOR, 1 TO 4 POINTS ON BIT, 65 TO 75 RPMS = RETURN TO SURFACE, LIGHT COAL & FINES W / 3 BPH WATER GAIN = 3 DOWN TO 1.5 BUCKETS PER HOUR OFF SAMPLE CATCHER = 95% TO 100% COAL
	18:00 - 18:30	0.50	EVALFM	TRIP	COMPZN	PUH INSIDE 7" CSG W / BHA
	18:30 - 00:00	5.50	EVALFM	OTHR	COMPZN	SAFETY MEETING @ START OF ALL OPERATIONS = SURGES # 31 THRU # 33 HYDRAULIC W / 3 GAL OF 450 FOAMER AHEAD & 1 BPM WATER W / 1200# TO 1400# DP PRESSURE & 1100# TO 1300# BACKSIDE PRESSURE, 1800 SCFM AIR, 6 BPH MIST, 1 GAL OF 450 FOAMER, 1/4 GAL OF CORROSION INHIBITOR PER 10 BBLS OF FLUID PUMPED, CUTTING OF AIR 3 TIMES TO DROP DP PRESSURE = RETURN TO SURFACE = SURGE # 31 BACK FOAM WATER = SURGE # 32 BACK FOAM WATER = SURGE # 33 HEAVY BLACK FOAM WATER W / LIGHT COAL & FINES
	00:00 - 00:30	0.50	EVALFM	TRIP	COMPZN	RIH FROM 7" CSG & TAG @ 3380'
6/21/2004	00:30 - 06:00	5.50	EVALFM	OTHR	COMPZN	R&R C/O F/3380'-T/3405' W / 900 TO 1500 SCFM AIR, 6 TO 10 BPH MIST, 1 GAL OF 450 FOAMER, 1/4 GAL OF CORROSION INHIBITOR PER 10 BBLS OF FLUID PUMPED, 350# TO 450# ON CHART @ COMPRESSORS & 250# TO 350# ON GAGE @ RIG FLOOR, 65 TO 75 RPMS & 1 TO 6 POINTS ON BIT = RETURN TO SURFACE, HEAVY TO MED COAL & FINE W / 3 BPH WATER GAIN = 12 DOWN TO 3 BUCKETS PER HOUR OFF SAMPLE CATCHER = 80% COAL & 20% SHALE = RUNNING SHALE OUT OF TOP COAL INTERVAL
	06:00 - 06:00	24.00	EVALFM	OTHR	COMPZN	R&R C/O F/3436'-3499' W / 900 TO 1500 SCFM AIR, 6 TO 10 BPH MIST, 1 GAL OF 450 FOAMER, 1/4 GAL OF CORROSION INHIBITOR PER 10 BBLS OF FLUID PUMPED, 350# TO 450# ON CHART @ COMPRESSORS & 250# TO 350# ON GAGE @ RIG FLOOR, 65 TO 75 RPM'S & 2 TO 6 POINTS ON BIT = RETURN TO SURFACE, HEAVY TO MED COAL & SHALE W / 3 BPH WATER GAIN = 10 DOWN TO 3 BUCKETS PER HOUR OFF SAMPLE CATCHER = 65% TO 70% COAL & 35% TO 30% SHALE FROM TOP COAL INTERVAL
6/22/2004	06:00 - 06:00	24.00	EVALFM	OTHR	COMPZN	R&R C/O F/3468'-3499' W / 1500 TO 900 SCFM AIR, 10 TO 8 BPH MIST, 2 TO 3 GALS OF 450 FOAMER, 1 GAL OF 744 POLYMER, 1/4 GAL OF CORROSION INHIBITOR PER 10 BBLS OF FLUID PUMPED, 450# TO 330# ON CHART @ COMPRESSORS & 350# TO 230# ON GAGE @ RIG FLOOR, 65 TO 75 RPMS & 1 TO 4 POINTS ON BIT = RETURNS TO SURFACE, MED TO LIGHT COAL & SHALE W / 2 TO 3 BPH WATER GAIN = 4 DOWN TO 1 BUCKETS PER HOUR OFF SAMPLE CATCHER = 60% TO 70% COAL & 40% TO 30% SHALE FROM TOP COAL INTERVAL
6/23/2004	06:00 - 06:00	24.00	EVALFM	OTHR	COMPZN	R&R C/O F/3499'-T/3530' W / 1500 TO 900 SCFM AIR, 10 TO 8 BPH

**CONOCOPHILLIPS CO**  
**Operations Summary Report**

Page 8 of 11

Legal Well Name: SAN JUAN 32-8 UNIT 223A  
Common Well Name: SAN JUAN 32-8 UNIT 223A  
Event Name: COMPLETION  
Contractor Name: KEY ENERGY SVCS  
Rig Name: KEY 18

Start: 4/20/2004  
Rig Release: 6/30/2004  
Rig Number: 18  
Spud Date: 5/5/2004  
End:  
Group:

Date	From - To	Hours	Code	Sub Code	Phase	Description of Operations
6/23/2004	06:00 - 06:00	24.00	EVALFM	OTHR	COMPZN	MIST, 2 TO 3 GALS OF 450 FOAMER, 1 GAL OF 744 POLYMER, 1/4 GAL OF CORROSION INHIBITOR PER 10 BBLS OF FLUID PUMPED, 450# TO 330# ON CHART @ COMPRESSORS & 350# TO 250# ON GAGE @ RIG FLOOR, 65 TO 75 RPMS & 1 TO 4 POINTS ON BIT = RETURN TO SURFACE, MED TO LIGHT COAL & SHALE W / 2 TO 3 BPH WATER GAIN = 6 DOWN TO 2 BUCKETS PER HOUR OFF SAMPLE CATCHER = 60% TO 70% COAL & 40% TO 30% SHALE FROM TOP COAL INTERVAL
6/24/2004	06:00 - 14:00	8.00	EVALFM	OTHR	COMPZN	R&R C/O F/3499'-T/3530' W / 1500 TO 900 SCFM AIR, 10 TO 8 BPH MIST, 2 TO 3 GALS OF 450 FOAMER, 1 TO 3 GALS OF 744 POLYMER, 1/4 GAL OF CORROSION INHIBITOR PER 10 BBLS OF FLUID PUMPED, 350# TO 550# ON CHART @ COMPRESSORS & 250# TO 450# ON GAGE @ RIG FLOOR, 65 TO 75 RPMS & 1 TO 4 POINTS ON BIT = RETURN TO SURFACE, MED TO LIGHT COAL & SHALE W / 2 TO 3 BPH WATER GAIN = 4 DOWN TO 2 BUCKETS PER HOUR OFF SAMPLE CATCHER = 60% TO 70% COAL & 40% TO 30% SHALE FROM TOP COAL INTERVAL
	14:00 - 14:30	0.50	EVALFM	TRIP	COMPZN	PUH INSIDE 7" CSG W / BHA
	14:30 - 17:00	2.50	EVALFM	SFTY	COMPZN	ALL PERSONNEL ON LOCATION STAND DOWN SAFETY W / COPC PERSONNEL
	17:00 - 06:00	13.00	EVALFM	OTHR	COMPZN	R&R C/O & CONDITION HOLE F/3309'-T/3499' W / 1500 SCFM AIR, 8 BPH MIST, 3 TO 4 GALS OF 450 FOAMER, 1/4 GAL OF CORROSION INHIBITOR, 3 GALS OF 755 POLYMER PER 10 BBLS OF FLUID PUMPED, 450# TO 550# ON CHART @ COMPRESSORS & 350# TO 450# ON GAGE @ RIG FLOOR, 1 TO 4 POINTS OF BIT, 65 TO 75 RPMS = RETURN TO SURFACE, MED TO LIGHT COAL, FINE & SHALE W / 2 TO 4 BPH WATER GAIN = 6 DOWN TO 2 BUCKETS PER HOUR OFF SAMPLE CATCHER = 60% TO 70% COAL W / 40% TO 30% SHALE
6/25/2004	06:00 - 06:00	24.00	EVALFM	OTHR	COMPZN	SAFETY MEETING @ START OF OPERATIONS = R&R C/O & CONDITION HOLE F/3499'-T/3530' W / 1500 SCFM AIR, 8 BPH MIST, 4 GALS OF 450 FOAMER, 1/4 GAL OF CORROSION INHIBITOR, 4 GAL'S OF 755 POLYMER PER 10 BBL'S OF FLUID PUMPED, 480# TO 530# ON CHART @ COMPRESSORS & 380# TO 430# ON GAGE @ RIG FLOOR, 1 TO 6 POINTS OF BIT, 65 TO 75 RPMS = RETURN TO SURFACE, MED TO LIGHT COAL, FINES & SHALE W / 3 TO 4 BPH WATER GAIN = 5 DOWN TO 2 BUCKETS PER HOUR OFF SAMPLE CATCHER = 60% TO 70% COAL W / 40% TO 30% SHALE
6/26/2004	06:00 - 06:00	24.00	EVALFM	OTHR	COMPZN	SAFETY MEETING @ START OF OPERATIONS = R&R C/O & CONDITION HOLE F/3530'-T/3562' W / 1500 TO 1000 SCFM AIR, 8 TO 10 BPH MIST, 4 GALS OF 450 FOAMER, 1/4 GAL OF CORROSION INHIBITOR, 4 GALS OF POLYMER PER 10 BBLS OF FLUID PUMPED, 480# TO 530# ON CHART @ COMPRESSORS & 380# TO 430# ON GAGE @ RIG FLOOR, 2 TO 4 POINTS ON BIT, 65 TO 75 RPMS = RETURN TO SURFACE, MED TO LIGHT COAL, FINES & SHALE W / 3 TO 4 BPH WATER GAIN = 4 DOWN TO 1.5 BUCKETS PER HOUR OFF SAMPLE CATCHER = 60% TO 70% COAL W / 40% TO 30% SHALE
6/27/2004	06:00 - 06:00	24.00	EVALFM	OTHR	COMPZN	SAFETY MEETING @ START OF OPERATIONS = R&R C/O & CONDITION HOLE F/3562'-T/3593' W / 1000 SCFM AIR, 8 TO 10 BPH MIST, 4 GALS OF 450 FOAMER, 1/4 GAL OF CORROSION INHIBITOR, 4 GALS OF POLYMER PER 10 BBLS OF FLUID PUMPED, 480# ON CHART @ COMPRESSORS & 400# ON GAGE @ RIG

**CONOCOPHILLIPS CO**  
**Operations Summary Report**

Page 9 of 11

Legal Well Name: SAN JUAN 32-8 UNIT 223A  
Common Well Name: SAN JUAN 32-8 UNIT 223A  
Event Name: COMPLETION  
Contractor Name: KEY ENERGY SVCS  
Rig Name: KEY 18

Spud Date: 5/5/2004  
Start: 4/20/2004  
End:  
Rig Release: 6/30/2004  
Group:  
Rig Number: 18

Date	From - To	Hours	Code	Sub Code	Phase	Description of Operations
6/27/2004	06:00 - 06:00	24.00	EVALFM	OTHR	COMPZN	FLOOR, 2 TO 4 POINTS ON BIT, 65 TO 75 RPMS = RETURN TO SURFACE, MED TO LIGHT COAL, FINES & SHALE W / 3 TO 4 BPH WATER GAIN = 4 DOWN TO 1.5 BUCKETS PER HOUR OFF SAMPLE CATCHER = 60% COAL W / 40% SHALE
6/28/2004	06:00 - 06:00	24.00	EVALFM	OTHR	COMPZN	SAFETY MEETING @ START OF OPERATIONS = R&R C/O & CONDITION HOLE F/3593'-T/3641' TD W / 1000 SCFM AIR, 8 TO 10 BPH MIST, 4 GALS OF 450 FOAMER, 1/4 GAL OF CORROSION INHIBITOR, 4 GALS OF POLYMER PER 10 BBLS OF FLUID PUMPED, 480# ON CHART @ COMPRESSORS & 400# ON GAGE @ RIG FLOOR, 2 TO 4 POINTS ON BIT, 65 TO 75 RPMS = RETURN TO SURFACE, MED TO LIGHT COAL, FINES & SHALE W / 3 TO 4 BPH WATER GAIN = 5 DOWN TO 1.5 BUCKETS PER HOUR OFF SAMPLE CATCHER = 50% TO 60% COAL W / 50% TO 40% SHALE
6/29/2004	06:00 - 08:00	2.00	EVALFM	OTHR	COMPZN	SAFETY MEETING @ START OF OPERATIONS = R&R C/O & CONDITION HOLE T/3641' TD W / 1000 SCFM AIR, 8 TO 10 BPH MIST, 4 GALS OF 450 FOAMER, 1/4 GAL OF CORROSION INHIBITOR, 4 GALS OF POLYMER PER 10 BBLS OF FLUID PUMPED, 480# ON CHART @ COMPRESSORS & 400# ON GAGE @ RIG FLOOR, 1 TO 3 POINTS ON BIT, 65 RPMS = RETURN TO SURFACE, LIGHT COAL, FINES & SHALE W / 3 TO 4 BPH WATER GAIN = 1.5 BUCKETS PER HOUR OFF SAMPLE CATCHER = 60% COAL W / 40% SHALE
	08:00 - 08:30	0.50	EVALFM	TRIP	COMPZN	PUH INSIDE 7" CSG W / BHA
	08:30 - 09:00	0.50	EVALFM	RURD	COMPZN	HANG BACK POWER SWIVEL & TIE BACK ON TWO LINE
	09:00 - 10:15	1.25	EVALFM	TRIP	COMPZN	COOH W / DP, DC'S & BHA
	10:15 - 10:30	0.25	EVALFM	SFTY	COMPZN	SAFETY MEETING @ START OF OPERATION
	10:30 - 11:45	1.25	CASING	PULD	COMPZN	PU & MU 6 1/4" RERUN BIT, BIT SUB, 9 JT'S OF CSG, H-LATCH COLLAR & SETTING TOOL
	11:45 - 12:45	1.00	CASING	TRIP	COMPZN	RIH W / BHA & DP T/3290'
	12:45 - 13:15	0.50	CASING	RURD	COMPZN	TIE BACK ON ONE LINE & PU POWER SWIVEL
	13:15 - 14:45	1.50	CASING	CIRC	COMPZN	WORKING 5 1/2" LINER TO TD, CLEAN THROUGH SHALE TIGHT SPOT F/3508'-18', HAD BRIDGES @ 3558', 3580', 3610' & 1 FT OF FILL @ TD
	14:45 - 15:00	0.25	CASING	OTHR	COMPZN	SET BIT HARD @ TD 3641' & RELEASED OF H-LATCH COLLAR = 5 1/2" LINER SET AS FOLLOWS 6 1/4" BIT SET @ 3641' 5 1/2" LINER SET @ 3639'.08" BOTTOM OF H-LATCH COLLAR SET @ 3248'.96" TOP OF H-LATCH COLLAR SET @ 3246'.56" OVERLAP OF 7" CSG SHOE = 57 FT TOTAL 9 JT'S 390'.12" OF 5 1/2" 15.50# J-55 LT&C CSG IN WELL
	15:00 - 15:30	0.50	EVALFM	CIRC	COMPZN	TOTAL 9 JT'S 390'.12" OF 5 1/2" 15.50# J-55 LT&C CSG IN WELL PU 3 FT OFF TOP OF H-LATCH COLLAR & CIRC BOTTOMS UP TO CLEAN UP 7" CSG
	15:30 - 15:45	0.25	EVALFM	SFTY	COMPZN	SAFETY MEETING @ START OF OPERATIONS
	15:45 - 16:00	0.25	EVALFM	RURD	COMPZN	HANG BACK POWER SWIVEL & TIE BACK ON TWO LINES
	16:00 - 18:30	2.50	EVALFM	PULD	COMPZN	COOH LAYING DOWN DP, DC'S & SETTING TOOL
	18:30 - 19:00	0.50	EVALFM	OTHR	COMPZN	SECURED WELL & LOCATION = S.D.O.N.
6/30/2004	07:00 - 07:15	0.25	PERFOP	SFTY	COMPZN	SAFETY MEETING @ START OF OPERATIONS = HAD 300# ON CSG
	07:15 - 07:45	0.50	PERFOP	RURD	COMPZN	RU BLUE JET PERFORATING EQUIPMENT
	07:45 - 08:00	0.25	PERFOP	PRDT	COMPZN	TEST LUBICATOR TO 300# WELLBORE PRESSURE FOR 15 MINS =

## Operations Summary Report

Legal Well Name: SAN JUAN 32-8 UNIT 223A  
 Common Well Name: SAN JUAN 32-8 UNIT 223A  
 Event Name: COMPLETION  
 Contractor Name: KEY ENERGY SVCS  
 Rig Name: KEY 18

Start: 4/20/2004  
 Rig Release: 6/30/2004  
 Rig Number: 18  
 Spud Date: 5/5/2004  
 End:  
 Group:

Date	From - To	Hours	Code	Sub Code	Phase	Description of Operations
6/30/2004	07:45 - 08:00	0.25	PERFOP	PRDT	COMPZN	GOOD TEST
	08:00 - 09:15	1.25	PERFOP	PERF	COMPZN	RIH & PERFORATED 5 1/2" LINER W / 3 1/8" CSG GUNS, 4 SPF, 0.75" DIA HOLES, 120 DEGREE PHASING AS FOLLOWS 3541'-56' = 15 FT = 60 HOLE'S 3528'-38' = 10 FT = 40 HOLE'S 3492'-95' = 3 FT = 12 HOLE'S 3485'-90' = 5 FT = 20 HOLE'S 3478'-83' = 5 FT = 20 HOLE'S 3453'-56' = 3 FT = 12 HOLE'S 3439'-42' = 3 FT = 12 HOLE'S 3432'-35' = 3 FT = 12 HOLE'S 3427'-30' = 3 FT = 12 HOLE'S 3410'-17' = 7 FT = 28 HOLE'S 3384'-88' = 4 FT = 16 HOLE'S NET TOTAL = 61 FT = 244 HOLE'S
	09:15 - 09:30	0.25	PERFOP	RURD	COMPZN	RD BLUE JET PERFORATING EQUIPMENT = ATTENTION TAG FILL OR BRIDGE @ 3623' ON FIRST GUN RUN & TAG SAME PLACE @ 3623' ON LAST GUN RUN
	09:30 - 10:00	0.50	EVALFM	RURD	COMPZN	RU 2 3/8" RAMS & EQUIPMENT
	10:00 - 10:45	0.75	EVALFM	PRTS	COMPZN	TEST 2 3/8" RAMS = 200# 3 MINS & 1800# 10 MINS = GOOD TEST
	10:45 - 11:00	0.25	EVALFM	SFTY	COMPZN	SAFETY MEETING @ START OF OPERATIONS ===== ATTENTION FINAL STABILIZED FLOW TEST ===== 2" OPEN FLOW TEST W / PITOT TUBE TIME = MANIFOLD = PITOT = MCFD = WATER 1 HR = 104# = 26# = 3400 = 1/4" STEAM & HEAVY MIST
	11:00 - 13:00	2.00	EVALFM	PULD	COMPZN	GIH PU 2 3/8" SAW TOOTH COLLAR, FLOAT & 2 3/8" TUBING OFF PIPE RACK TAG @ 3623'
	13:00 - 13:45	0.75	EVALFM	CIRC	COMPZN	C/O F/3623'-T/3639' PBDT W / AIR ASSIST
	13:45 - 14:30	0.75	EVALFM	TRIP	COMPZN	COOH W / 2 3/8" TUBING & BHA
	14:30 - 14:45	0.25	EVALFM	RURD	COMPZN	PU & MU PUMPING BHA
	14:45 - 15:00	0.25	EVALFM	SFTY	COMPZN	SAFETY MEETING @ START OF OPERATIONS
	15:00 - 15:45	0.75	EVALFM	TRIP	COMPZN	RIH W / PUMPING BHA & TUBING TO PBDT @ 3639'
	15:45 - 16:00	0.25	EVALFM	OTHR	COMPZN	LAND TUBING HANGER W / 2 3/8" TUBING SET AS FOLLOWS 2 7/8" ORANGED PEELED MUD ANCHOR E.O.T. @ 3619'.71" 2 3/8" EXP CHECK @ 3589'.06" 2 3/8" 1.78" FN @ 3588'.31" 2 3/8" 110 JT'S TUBING @ 3587'.36" TO HANGER @ SURFACE TOTAL OF 1 JT 2 7/8" EUE 8RD 6.5# J-55 MUD ANCHOR & 110 JT'S OF 2 3/8" EUE 8RD J-55 4.7# TUBING IN WELL
7/1/2004	16:00 - 18:30	2.50	EVALFM	NUND	COMPZN	RD & ND RIG FLOOR, BOP'S, HCR VALVES = NU PUMPING WELLHEAD
	18:30 - 19:00	0.50	EVALFM	OTHR	COMPZN	SECURED WELL & LOCATION = S.D.O.N.
	06:00 - 08:00	2.00	RPCOMP	SFTY	COMPZN	SAFETY MEETING IN TOWN FOR ALL RIG PERSONNEL
	08:00 - 09:30	1.50	RPCOMP	OTHR	COMPZN	TRAVEL TIME
	09:30 - 10:00	0.50	RPCOMP	SFTY	COMPZN	SAFETY MEETING @ START OF OPERATIONS
	10:00 - 12:00	2.00	RPCOMP	PULD	COMPZN	GIH PU PUMP & ROD'S AS FOLLOW'S = 1' PERF NIPPLE ON BOTTOM OF PUMP, HF PUMP # COPC-132 BY ENERGY PUMP & SUPPLY INC., 2" X 1 1/2" X 12' RWAC-Z, 1-4' 3/4" PLAIN PONY ROD ON TOP OF PUMP, 143 3/4" PLAIN ROD'S, 1-2' 3/4" PLAIN PONY ROD, 22' 1/4" POLISH ROD
	12:00 - 12:45	0.75	RPCOMP	DHEQ	COMPZN	TEST TUBING & PUMP TO 500# FOR 15 MIN'S = GOOD TEST =

**CONOCOPHILLIPS CO**  
**Operations Summary Report**

Page 11 of 11

Legal Well Name: SAN JUAN 32-8 UNIT 223A  
Common Well Name: SAN JUAN 32-8 UNIT 223A  
Event Name: COMPLETION  
Contractor Name: KEY ENERGY SVCS  
Rig Name: KEY 18

Start: 4/20/2004  
Rig Release: 6/30/2004  
Rig Number: 18

Spud Date: 5/5/2004  
End:  
Group:

Date	From - To	Hours	Code	Sub Code	Phase	Description of Operations
7/1/2004	12:00 - 12:45	0.75	RPCOMP	DHEQ	COMPZN	bled off pressure, stroked pump w / rig blocks to 500# & held for 15 mins = good test
	12:45 - 13:00	0.25	RPCOMP	HOSO	COMPZN	spaced out & hang off on stuffing box
	13:00 - 18:30	5.50	MOVE	DMOB	DEMOB	WSI inspection on BOP stack & choke manifold = bad stack = sent stack & choke manifold to town for repair
	18:30 - 19:00	0.50	MOVE	OTHR	DEMOB	RD & rig & equipment secured well & location = S.D.O.N. = released rig & equipment on 06/30/2004 @ 19:00 PM = job complete - drop from report = released well to production dept. to produce basin fruitland coal interval = res. pit open & full