

In Lieu of  
Form 3160-4  
(July 1992)

UNITED STATES  
DEPARTMENT OF THE INTERIOR  
BUREAU OF LAND MANAGEMENT

SUBMIT IN  
DUPLICATE

(See other instructions on  
reverse side)

FORM APPROVED  
OMB NO. 1004-0137  
Expires: February 28, 1995

5. LEASE DESIGNATION AND LEASE NO.  
SF-078764

6. IF INDIAN ALLOTTEE OR

WELL COMPLETION OR RECOMPLETION REPORT AND LOG\*

RECEIVED

070 FARMINGTON NM

1a. TYPE OF WELL: ☐ OIL WELL ☒ GAS WELL ☐ DRY ☐ OTHER  
b. TYPE OF COMPLETION:  
☒ NEW WELL ☐ WORKOVER ☐ DEEPEN ☐ PLUG BACK ☐ DIFF.RESV.R. ☐ OTHER

2. NAME OF OPERATOR  
WILLIAMS PRODUCTION COMPANY

3. ADDRESS AND TELEPHONE NO.  
P.O. BOX 3102 MS 25-1 TULSA, OK 74101 (918) 573-6254

4. LOCATION OF WELL (Report location clearly and in accordance with any State requirements)\*  
At Surface: 975' FSL & 1615' FEL  
At top production interval reported below :  
At total depth:

7. UNIT AGREEMENT NAME

8. FARM OR LEASE NAME, WELL NO.  
ROSA UNIT #200A

9. API WELL NO.  
30-039-27624

10. FIELD AND POOL, OR WILDCAT  
BASIN FRUITLAND COAL

11. SEC. T.R.M., OR BLOCK AND  
SURVEY OR AREA  
SW/4 SE/4 SEC 29-31N-5W

12. COUNTY OR  
RIO ARRIBA 13. STATE  
NEW MEXICO

15. DATE  
SPUDDED  
05/17/2004 16. DATE T.D.  
REACHED  
05/16/2004 17. DATE COMPLETED (READY TO PRODUCE)  
06/16/2004

14. PERMIT NO.  
DATE ISSUED  
6522' GR

19. ELEVATION CASINGHEAD

20. TOTAL DEPTH, MD & TVD  
3423' MD

21. PLUG, BACK T.D., MD & TVD

22. IF MULTICOMP.,  
HOW MANY

23. INTERVALS  
DRILLED BY

ROTARY TOOLS  
x CABLE TOOLS

24. PRODUCING INTERVAL(S), OF THIS COMPLETION - TOP, BOTTOM, NAME (MD AND TVD)\*  
BASIN FRUITLAND COAL 3241' - 3373'

25. WAS DIRECTIONAL SURVEY MADE  
YES

26. TYPE ELECTRIC AND OTHER LOGS RUN

27. WAS WELL CORED  
NO

28. CASING REPORT (Report all strings set in well)

CASING SIZE/GRADE	WEIGHT, LB./FT	DEPTH SET (MD)	HOLE SIZE	TOP OF CEMENT, CEMENTING RECORD	AMOUNT PULLED
9-5/8" K-55	36#	316'	12-1/4"	175 SX - SURFACE	
7" K-55	20#	3241'	8-3/4"	500 SX - SURFACE	

29. LINER RECORD

SIZE	TOP (MD)	BOTTOM (MD)	SACKS CEMENT*	SCREEN (MD)	SIZE	DEPTH SET (MD)	PACKER SET (MD)
5-1/2", N-80	3182'	3407'	0 SX		2-7/8"	3350'	

31. PERFORATION RECORD (Interval, size, and number)

Basin Fruitland Coal: 3241'-52' (44 holes), 3280'-91' (44 holes), 3323'-43' (80 holes), 3344'-62' (72 holes) & 3365'-73' (32 holes). 272 total holes

32. ACID, SHOT, FRACTURE, CEMENT SQUEEZE, ETC.

DEPTH INTERVAL (MD)  
AMOUNT AND KIND OF MATERIAL USED  
WELL WAS NOT ACIDIZED OR FRACED

33. PRODUCTION

DATE OF FIRST PRODUCTION		PRODUCTION METHOD (Flowing, gas lift, pumping-size and type of pump) Flowing				WELL STATUS (PRODUCING OR SI) SI, well on vacuum, no flow	
DATE OF TEST	TESTED	CHOKE SIZE	PROD'N FOR TEST PERIOD	OIL - BBL	GAS - MCF	WATER - BBL	GAS-OIL RATIO
10/05/03	3 hr	3/4"	3 hrs		0		
FLOW TBG PRESS	CASING PRESSURE	CALCULATED 24-HOUR RATE		OIL - BBL	GAS - MCF	WATER - BBL	OIL GRAVITY-API (CORR.)
0	0				0		

34. DISPOSITION OF GAS (Sold, used for fuel, vented, etc.): TO BE SOLD

TEST WITNESSED BY: CHIK CHARLEY

35. LIST OF ATTACHMENTS: SUMMARY OF POROUS ZONES, WELLBORE DIAGRAM

ACCEPTED FOR RECORD

36. I hereby certify that the foregoing and attached information is complete and correct as determined from all available records

SIGNED Tracy Ross TITLE Sr. Production Analyst DATE July 3, 2004

JUL 16 2004

FARMINGTON FIELD OFFICE  
BY AB

NMOC

37. SUMMARY OF POROUS ZONES: (Show all important zones of porosity and contents thereof, cored intervals, and all drill-stem tests, including depth interval tested, cushion used, time tool open, flowing and shut-in pressures, and recoveries):

38. GEOLOGIC MARKERS

[illegible]

ROSA UNIT #200A  
BASIN FRUITLAND COAL

Spud 05/07/04  
Completed 06/16/04  
1st Delivery 00/00/04

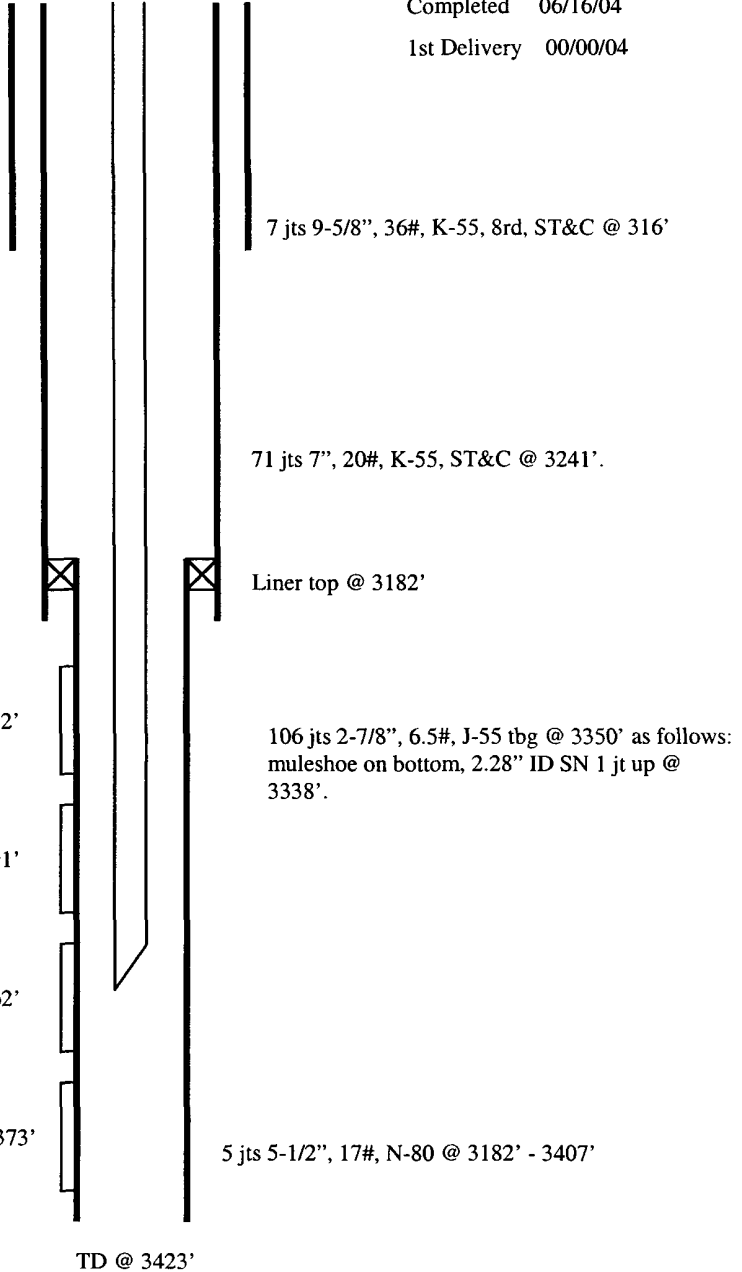
Location:  
975' FSL and 1615' FEL  
SW/4 SE/4 Sec 29(O), T31N, R5W  
Rio Arriba, New Mexico  
Elevation: 6522' GR

API # 30-039-27624

Top	Depth
Ojo Alamo	2682'
Kirtland	2797'
Fruitland	3197'
Pictured Cliffs	3402'

4 SPF, 272 holes total

Open hole from 6-1/4" to 9-1/2"  
from 3246' to 3402'



Hole Size	Casing	Cement	Volume	Top of Cmt
12-1/4"	9-5/8", 36#	175 sx	243 cu. ft.	Surface
8-3/4"	7", 20#	500 sx	1020 cu. ft.	Surface
6-1/4"	5-1/2", 17#	Did Not Cmt		