

UNITED STATES
DEPARTMENT OF THE INTERIOR
BUREAU OF LAND MANAGEMENT

APPLICATION FOR PERMIT TO DRILL, DEEPEN, OR PLUG BACK

RECEIVED

1a. Type of Work DRILL	5. Lease Number NMSF-079383	2003 JAN 28 AM 9:18
1b. Type of Well GAS	Unit Reporting Number 891000538A	070 Farmington, NM
2. Operator BURLINGTON RESOURCES Oil & Gas Company	7. Unit Agreement Name San Juan 30-6 Unit	
3. Address & Phone No. of Operator PO Box 4289, Farmington, NM 87499 (505) 326-9700	8. Farm or Lease Name San Juan 30-6 Unit	
4. Location of Well 780' FSL, 1825' FEL Latitude 36° 45.8405 Longitude 107° 32.2145	9. Well Number 427S	
14. Distance in Miles from Nearest Town 10 miles from Navajo City	10. Field, Pool, Wildcat Basin Fruitland Coal	
15. Distance from Proposed Location to Nearest Property or Lease Line 780'	11. Sec., Twn, Rge, Mer. (NMPM) Sec. 35, T-30-N, R-7-W	
16. Acres in Lease	API # 30-039-27300	
17. Acres Assigned to Well 320 E/2	12. County Rio Arriba	13. State NM
18. Distance from Proposed Location to Nearest Well, Drlg, Compl, or Applied for on this Lease 20'	20. Rotary or Cable Tools Rotary	
19. Proposed Depth 3785'	22. Approx. Date Work will Start	
21. Elevations (DF, FT, GR, Etc.) 6913' GR		
23. Proposed Casing and Cementing Program See Operations Plan attached		
24. Authorized by: <u>[Signature]</u> Regulatory/Compliance Supervisor	Date 12-11-02	

PERMIT NO. _____

APPROVAL DATE _____

APPROVED BY /s/ David J. Mankiewicz

TITLE _____

DATE MAY - 2 2003

Archaeological Report to be submitted

Threatened and Endangered Species Report to be submitted

NOTE: This format is issued in lieu of U.S. BLM Form 3160-3

Title 18 U.S.C. Section 1001, makes it a crime for any person knowingly and willfully to make to any department or agency of the United States any false, fictitious or fraudulent statements or presentations as to any matter within its jurisdiction.

DRILLING OPERATIONS AUTHORIZED ARE
SUBJECT TO COMPLIANCE WITH ATTACHED
"GENERAL REQUIREMENTS".

NMOCDD

This action is subject to technical and
procedural review pursuant to 43 CFR 3165.2
and appeal pursuant to 43 CFR 3165.4

District I
PO Box 1980, Hobbs, NM 88241-1980

State of New Mexico
Energy, Minerals & Natural Resources Department

Form C-102
Revised February 21, 1994

District II
PO Drawer DD, Artesia, NM 88211-0719

Instructions on back
Submit to Appropriate District Office
State Lease - 4 Copies
Fee Lease - 3 Copies

District III
1000 Rio Brazos Rd., Aztec, NM 87410

OIL CONSERVATION DIVISION
PO Box 2088
Santa Fe, NM 87504-2088

District IV
PO Box 2088, Santa Fe, NM 87504-2088

☐ AMENDED REPORT

WELL LOCATION AND ACREAGE DEDICATION PLAT

*API Number 30-039- 27300	*Pool Code 71629	*Pool Name Basin Fruitland Coal
*Property Code 7469	*Property Name SAN JUAN 30-6 UNIT	*Well Number. 427S
*OGRID No. 14538	*Operator Name BURLINGTON RESOURCES OIL & GAS COMPANY, LP	*Elevation 6913'

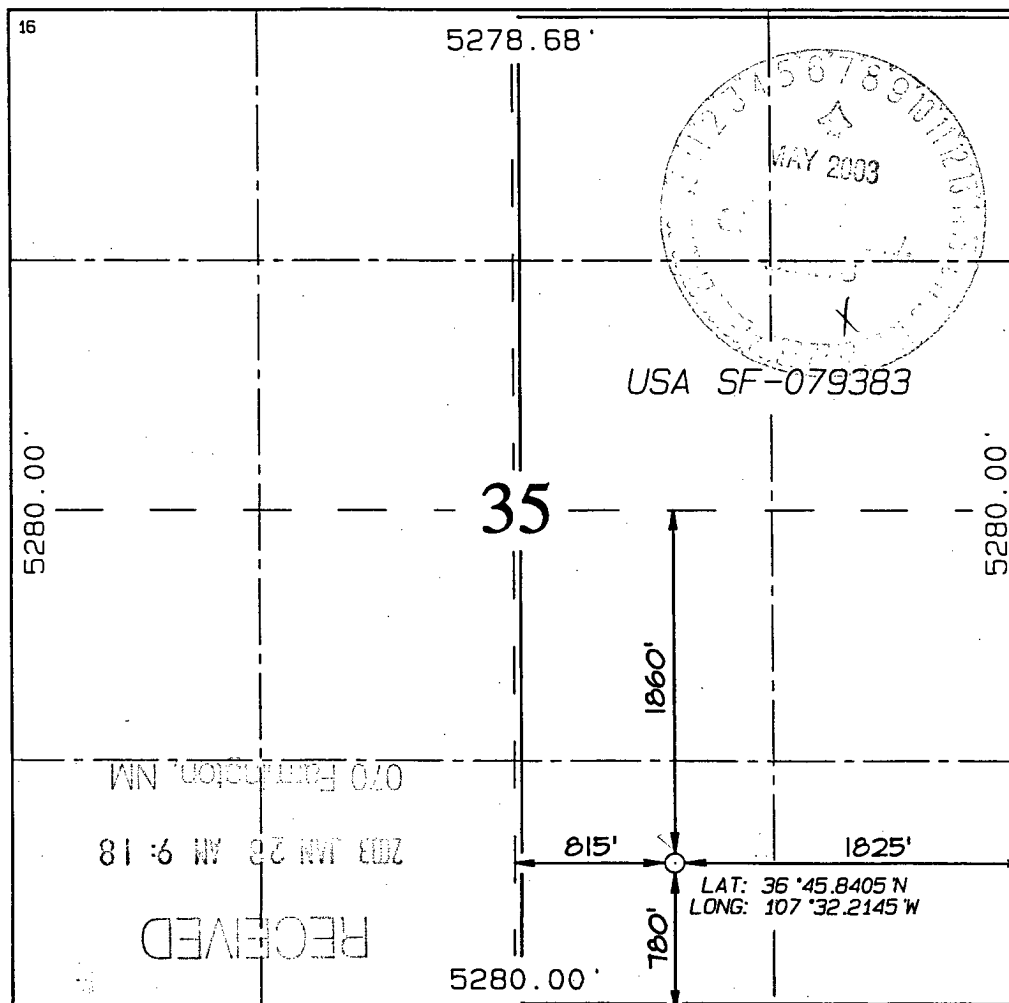
¹⁰ Surface Location

UL or lot no. 0	Section 35	Township 30N	Range 7W	Lot Idn	Feet from the 780	North/South line SOUTH	Feet from the 1825	East/West line EAST	County RIO ARriba
--------------------	---------------	-----------------	-------------	---------	----------------------	---------------------------	-----------------------	------------------------	----------------------

¹¹ Bottom Hole Location If Different From Surface

UL or lot no.	Section	Township	Range	Lot Idn	Feet from the	North/South line	Feet from the	East/West line	County
¹² Dedicated Acres FC-E/320					¹³ Joint or Infill	¹⁴ Consolidation Code	¹⁵ Order No.		

NO ALLOWABLE WILL BE ASSIGNED TO THIS COMPLETION UNTIL ALL INTERESTS HAVE BEEN CONSOLIDATED
OR A NON-STANDARD UNIT HAS BEEN APPROVED BY THE DIVISION



¹⁷ OPERATOR CERTIFICATION

I hereby certify that the information
contained herein is true and complete
to the best of my knowledge and belief

Peggy Cole
Signature

Peggy Cole
Printed Name

Regulatory Supervisor
Title

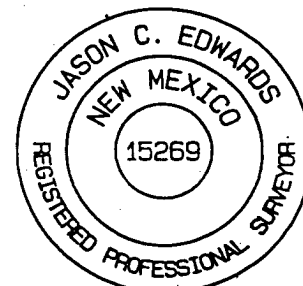
12-11-02
Date

¹⁸ SURVEYOR CERTIFICATION

I hereby certify that the well location
shown on this plat was plotted from field
notes of actual surveys made by me or under
my supervision, and that the same is true
and correct to the best of my belief.

Survey Date: NOVEMBER 1, 2002

Signature and Seal of Professional Surveyor



JASON C. EDWARDS
Certificate Number 15269

OPERATIONS PLAN

Well Name: San Juan 30-6 Unit #427S
Location: 780' FSL, 1825' FEL, Section 35, T-30-N, R-7-W
Latitude 36° 45.8405, Longitude 107° 32.2145
Rio Arriba County, NM
Formation: Basin Fruitland Coal
Elevation: 6913' GR

Formation:	Top	Bottom	Contents
Surface	San Jose	2887'	
Ojo Alamo	2887'	3003'	aquifer
Kirtland	3003'	3344'	gas
Fruitland	3344'	3787'	gas
Intermediate casing	3580'		
Top of Coal	3630'	3787'	
Pictured Cliffs	3787'		
Total Depth	3785'		

Logging Program:

Open hole - GR, IND-CNL-CDL - TD to surface
Mud log - TD to intermediate casing

Coring Program: none

Mud Program:

Interval	Type	Weight	Vis.	Fluid Loss
0- 120'	Spud	8.4-9.0	40-50	no control
120-3580'	Non-dispersed	8.4-9.0	30-60	no control

Casing Program (as listed, the equivalent, or better):

Hole Size	Depth Interval	Csg. Size	Wt.	Grade
12 1/4"	0' - 120'	9 5/8"	32.3#	WC-50
8 3/4"	0' - 3580'	7"	20.0#	J-55
6 1/4"	3480' - 3785'	5 1/2"	15.5#	K-55

Tubing Program:

0' - 3785'	2 3/8"	4.7#	J-55
------------	--------	------	------

Float Equipment: 9 5/8" surface casing - saw tooth guide shoe. Centralizers will be run in accordance with Onshore Order #2.

7" intermediate casing - guide shoe and self-fill float collar. Standard centralizers run every other joint above shoe. Two turbolizing type centralizers - one below and one into the base of the Ojo Alamo @ 3003'. Standard centralizers thereafter every fourth joint up to the base of the surface pipe.

5 1/2" production liner - Pre-drilled liner run to total depth with an overlap into the 7" casing. Liner hanger is a slip grip type.

Wellhead Equipment: 9 5/8" x 7" x 2 3/8" x 11" 3000 psi xmas tree assembly.

Cementing:

9 5/8" surface casing - cement with 27 sx Class A, B Portland Type I, II cement (38 cu.ft. of slurry, to bring cement to surface). WOC 24 hours for pre-set holes or 8 hours for conventionally set holes before pressure testing or drilling out from under surface casing. Test casing to 600 psi/30 minutes.

7" intermediate casing - lead w/444 sacks Premium Lite cement with 3% calcium chloride, 0.25 pps Celloflake, 5 pps LCM-1, 0.4% fluid loss, 0.4% sodium metasilicate. Tail with 90 sacks Type III cement with 1% calcium chloride, 0.25 pps Celloflake, 0.2% fluid loss (1071 cu.ft., 100% excess to circulate to surface).

5 1/2" liner - uncemented.

Note: If open hole logs are run, cement volumes will be based on 25% excess over caliper volumes.

BOP and tests:

Surface to intermediate TD - 11" 2000 psi (minimum) double gate BOP stack (Reference Figure #1). Prior to drilling out surface casing, test rams to 600#/30 min.

Intermediate TD to Total Depth - 7 1/6" 2000 psi (minimum) double gate BOP stack (Reference Figure #2). Prior to drilling out intermediate casing, test blind rams and casing to 2500 psi for 30 minutes; all pipe rams and casing to 2500 psi for 30 minutes each.

From surface to TD - choke manifold (Reference Figure #3).

Pipe rams will be actuated at least once each day and blind rams actuated once each trip to test proper functioning. An upper kelly cock valve with handle and drill string safety valves to fit each drill string will be maintained and available on the rig floor.

Additional information:

- The Fruitland Coal formation will be completed.
- Anticipated pore pressure for the Fruitland is 500 psi.
- This gas is dedicated.
- The east half of section 35 is dedicated to this well.

Drilling Engineer:

E. J. Giles

Date:

12/13/02