

UNITED STATES  
DEPARTMENT OF THE INTERIOR  
BUREAU OF LAND MANAGEMENT

FORM APPROVED  
OMB No. 1004-0136  
Expires November 30, 2000

APPLICATION FOR PERMIT TO DRILL OR REENTER

1a. Type of Work:  DRILL  REENTER

b. Type of Well:  Oil Well  Gas Well  Other  Single Zone  Multiple Zone

2. Name of Operator

Cordillera Energy, Inc.

3A. Address

c/o Walsh Engineering, 7415 E. Main, Farmington, NM 87402

3b. Phone No. (include area code)

(505) 327-4892

4. Location of Well (Report location clearly and in accordance with any State requirements. \*)

At surface 2095' FSL and 1115' FWL

At proposed prod. Zone

14. Distance in miles and direction from nearest town or post office\*

21 miles south of Dulce, NM

15. Distance from proposed\* location to nearest property or lease line, ft. (Also to nearest drig. unit line, if any)

1115'

16. No. of Acres in lease

320+

17. Spacing Unit dedicated to this well

320 acres W/2

18. Distance from proposed location\* to nearest well, drilling, completed, applied for, on this lease, ft.

1300'

19. Proposed Depth

8120' +/-

20. BLM/BIA Bond No. on file

21. Elevations (Show whether DF, KDB, RT, GL, etc.)

6964' GL

22. Approximate date work will start\*

September 15, 2003

23. Estimated duration

3 weeks

24. Attachments

The following, completed in accordance with the requirements of Onshore Oil and Gas Order No. 1, shall be attached to this form:

- |  |   |
|--|---|
| <p>1. Well plat certified by a registered surveyor.</p> <p>2. A Drilling Plan.</p> <p>3. A Surface Use Plan (if the location is on National Forest System Lands, the SUPO shall be filed with the appropriate Forest Service Office.</p> | <p>4. Bond to cover the operations unless covered by an existing bond on file (see Item 20 above).</p> <p>5. Operator certification.</p> <p>6. Such other site specific information and/or plans as may be required by the authorized office.</p> |
|--|---|

25. Signature <i>Paul C. Thompson</i>	Name (Printed/Typed) Paul C. Thompson, P.E.	Date 8/13/03
--	--	-----------------

<b>Agent</b>		
Approved by (Signature) <i>/s/ David R. Sitzler</i>	Name (Printed/Typed)	Date SEP 27 2004

Title Assistant Field Manager	Office
----------------------------------	--------

Application approval does not warrant or certify that the applicant holds legal or equitable title to those rights in the subject lease which would entitle the applicant to conduct operations thereon.

Conditions of approval, if any, are attached.

Title 18 U.S.C. Section 1001 and Title 43 U.S.C. Section 1212, make it a crime for any person knowingly and willfully to make to any department or agency of the United States any false, fictitious or fraudulent statements or representations as to any matter within its jurisdiction.

\*(Instructions on reverse)

District I  
PO Box 1980, Hobbs, NM 88241-1980

District II  
PO Drawer DD, Artesia, NM 88211-0719

District III  
1000 Rio Brazos Rd., Aztec, NM 87410

District IV  
PO Box 2088, Santa Fe, NM 87504-2088

State of New Mexico  
Energy, Minerals & Natural Resources Department

Form C-102  
Revised February 21, 1994  
Instructions on back  
Submit to Appropriate District Office  
State Lease - 4 Copies  
Fee Lease - 3 Copies

OIL CONSERVATION DIVISION  
PO Box 2088  
Santa Fe, NM 87504-2088

AMENDED REPORT

WELL LOCATION AND ACREAGE DEDICATION PLAT

<sup>1</sup> API Number <b>30-039-29255</b>		<sup>2</sup> Pool Code 72319 / 71599		<sup>3</sup> Pool Name BLANCO MESAVERDE / BASIN DAKOTA	
<sup>4</sup> Property Code <b>24080</b>		<sup>5</sup> Property Name TRIBAL C		<sup>6</sup> Well Number 2Y	
<sup>7</sup> GRID No. 173252		<sup>8</sup> Operator Name CORDILLERA ENERGY, INC.		<sup>9</sup> Elevation 6964'	

<sup>10</sup> Surface Location

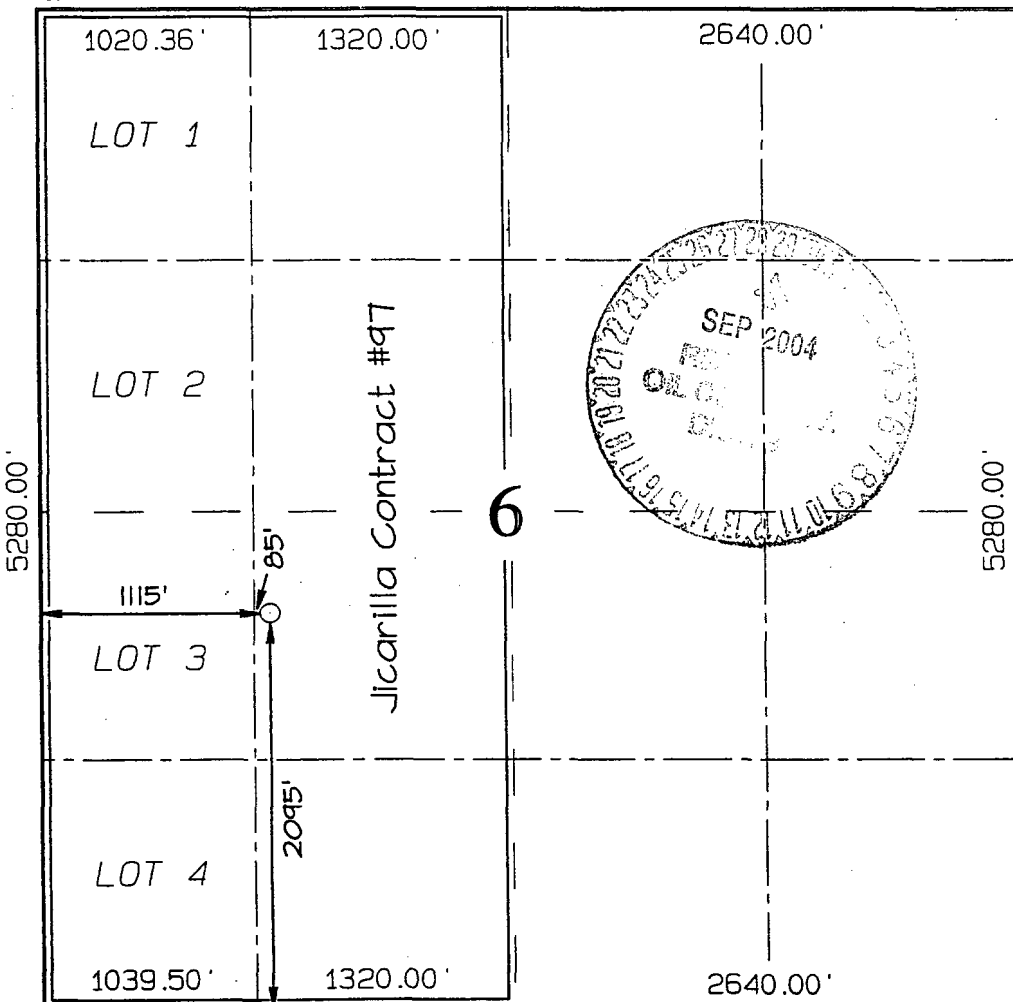
UL or lot no.	Section	Township	Range	Lot Idn	Feet from the	North/South line	Feet from the	East/West line	County
K	6	26N	3W		2095	SOUTH	1115	WEST	RIO ARRIBA

<sup>11</sup> Bottom Hole Location If Different From Surface

UL or lot no.	Section	Township	Range	Lot Idn	Feet from the	North/South line	Feet from the	East/West line	County

<sup>12</sup> Dedicated Acres 284.84 Acres - (W/2)	<sup>13</sup> Joint or Infill Y	<sup>14</sup> Consolidation Code	<sup>15</sup> Order No.
---	------------------------------------	----------------------------------	-------------------------

NO ALLOWABLE WILL BE ASSIGNED TO THIS COMPLETION UNTIL ALL INTERESTS HAVE BEEN CONSOLIDATED OR A NON-STANDARD UNIT HAS BEEN APPROVED BY THE DIVISION



<sup>17</sup> OPERATOR CERTIFICATION  
I hereby certify that the information contained herein is true and complete to the best of my knowledge and belief

*Paul C. Thompson*  
Signature

Paul C. Thompson  
Printed Name

AGENT  
Title

8/13/03  
Date

<sup>18</sup> SURVEYOR CERTIFICATION  
I hereby certify that the well location shown on this plat was plotted from field notes of actual surveys made by me or under my supervision, and that the same is true and correct to the best of my belief.

Date of Survey: JULY 3, 2003

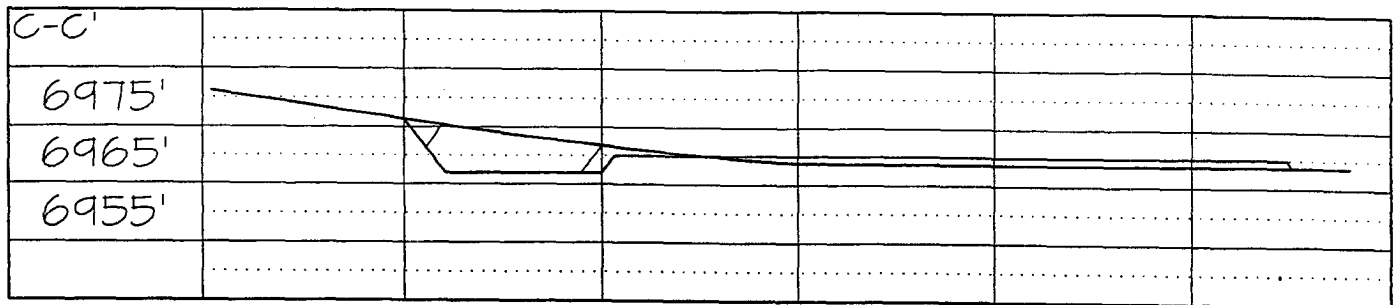
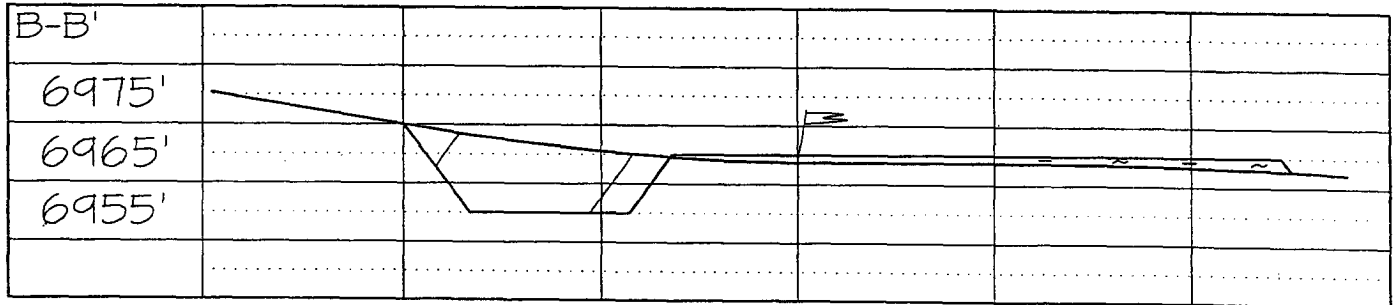
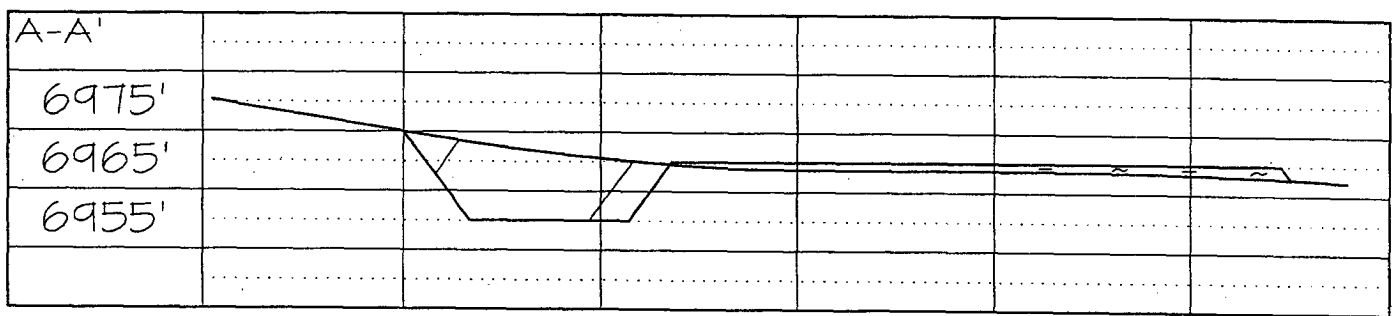
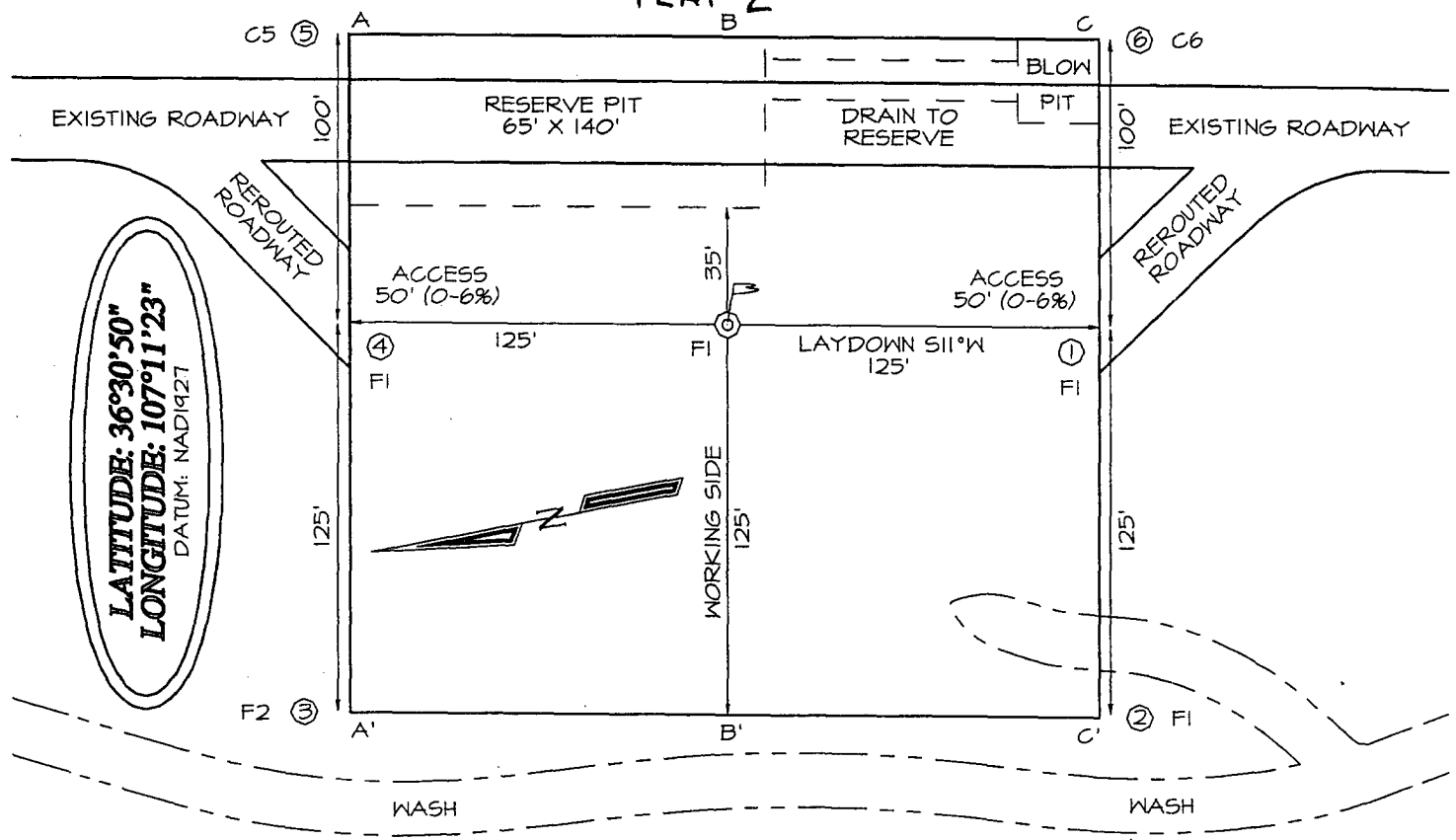
Signature and Seal of Professional Surveyor



*JASON C. EDWARDS*  
Certificate Number 15269

**CORDILLERA ENERGY, INC. TRIBAL C #2Y**  
**2095' FSL 1115' FWL, SECTION 6, T26N, 10W, NMPM**  
**RIO ARriba COUNTY, NEW MEXICO GROUND ELEVATION: 6964'**

PLAT 2



CORDILLERA ENERGY, INC.  
OPERATIONS PLAN  
Tribal C #2Y

I. Location: 2095' FSL & 1115' FWL Date: August 13, 2003  
Sec 6, T26N, R3W  
Rio Arriba County, NM

Field: Blanco MV & Basin DK Elev: GL 6964'  
Surface: Jicarilla Apache Tribe  
Minerals: Jicarilla Contract #97

II. Geology: Surface formation \_ San Jose

A. Formation Tops	Depths
Ojo Alamo	
Kirtland	
Pictured Cliffs	3495'
Cliff House	5320'
Menefee	5445'
Point Lookout	5770'
Greenhorn	7845'
Graneros	
Dakota	7925'
Total Depth	8120'

Estimated depths of anticipated water, oil, gas, and other mineral bearing formations which are expected to be encountered:

Water and gas - 3495', 5320', 5770', 7925'.

B. Logging Program: Induction/GR and density logs at TD.

C. No over pressured zones are expected in this well. No H<sub>2</sub>S zones will be penetrated in this well. Max. BHP = 2500 psig.

III. Drilling

A. Contractor:

B. Mud Program:

The surface hole will be drilled with a fresh water mud.

The intermediate hole will be drilled with a fresh water polymer mud. The weighting material will be drill solids or if conditions dictate, barite. The maximum mud weight expected is 8.5 ppg.

The production hole will be drilled with air or air/mist.

C. Minimum Blowout Control Specifications:

Double ram type 2000 psi working pressure BOP with a rotating head. See the attached Exhibit #1 for details on the BOP equipment. All ram type preventers and related equipment will be hydraulically tested at nipple-up and after any use under pressure to 1000 psi.

The blind rams will be hydraulically activated and checked for operational readiness each time pipe is pulled out of the hole. All checks of the BOP stack and equipment will be noted on the daily drilling report. The BOP equipment will include a kelly cock, floor safety valve, and choke manifold all rated to 2000 psi.

IV. Materials

A. Casing Program:

Hole Size	Depth	Casing Size	Wt. & Grade
12-1/4"	250'	9-5/8"	36# J-55
8-3/4"	3895'	7"	20# J-55
6-1/4"	8120'	4-1/2"	11.6# N-80

B. Float Equipment:

a) Surface Casing: Notched collar on bottom and 3 centralizers on the bottom 3 joints.

b) Intermediate Casing: 7" cement guide shoe and self fill insert float collar. Place float one joint above shoe. Ten centralizers spaced every other joint above shoe and ten turbolizers every other joint from 2000'.

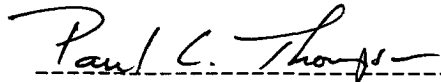
c) Production Casing: 4-1/2" whirler type cement nosed guide shoe and a float collar on top of the bottom joint.

V. Cementing:

**Surface casing: 9-5/8"** - Use 140 sx (165 cu. ft.) of Cl "B" with 2% CaCl<sub>2</sub> (Yield = 1.18 cu. ft./sk; slurry weight = 15.6 PPG). 100% excess to circulate cement to surface. WOC 12 hours. Pressure test surface casing to 1000 psi for 30 min.

**Intermediate Casing: 7"** - Before cementing circulate hole with at least 1-1/2 hole volumes of mud. Precede cement with 30 bbls of fresh water. **Lead** with 495 sx (1035 cu.ft) of Type III 65/35 poz with 8% gel, 1% CaCl<sub>2</sub>, ¼#/sk. Celloflake. (Yield = 2.09 cu.ft./sk; slurry weight = 12.1 PPG). **Tail** with 100 sx (139 cu.ft.) of Type III with 1% CaCl<sub>2</sub>, ¼#/sk. Celloflake. (Yield = 1.39 cu. ft./sk; slurry weight = 14.5 PPG). Total cement volume is 1174 cu.ft. (100% excess to circulate cement to surface). WOC for 12 hrs. Pressure test the BOP and casing to 1500 psi.

**Production Casing: 4-1/2"** - Blow hole clean. Precede cement with 20 bbls of gel water and 10 bbls of water. **Lead** with 285 sx(564 cu.ft.) of Premium Lite HS with 0.65% FL-52, 0.32% CD-32, ¼ #/sk celloflake, and 4% phenoseal. (Yield = 1.98 cu.ft./sk; slurry weight = 12.5 PPG). **Tail** with 100 sx (196 cu.ft.) of Premium Lite HS with 0.65% FL-52, and 0.32% CD-32. (Yield = 1.96 cu.ft./sk; slurry weight = 12.5 PPG). Total cement volume is 760 cu.ft. (70% excess to circulate 100' above the intermediate casing shoe).



Paul C. Thompson, P.E.

# Cordillera Energy, Inc.

## Well Control Equipment Schematic for 2M Service

Attachment to Drilling Technical Program

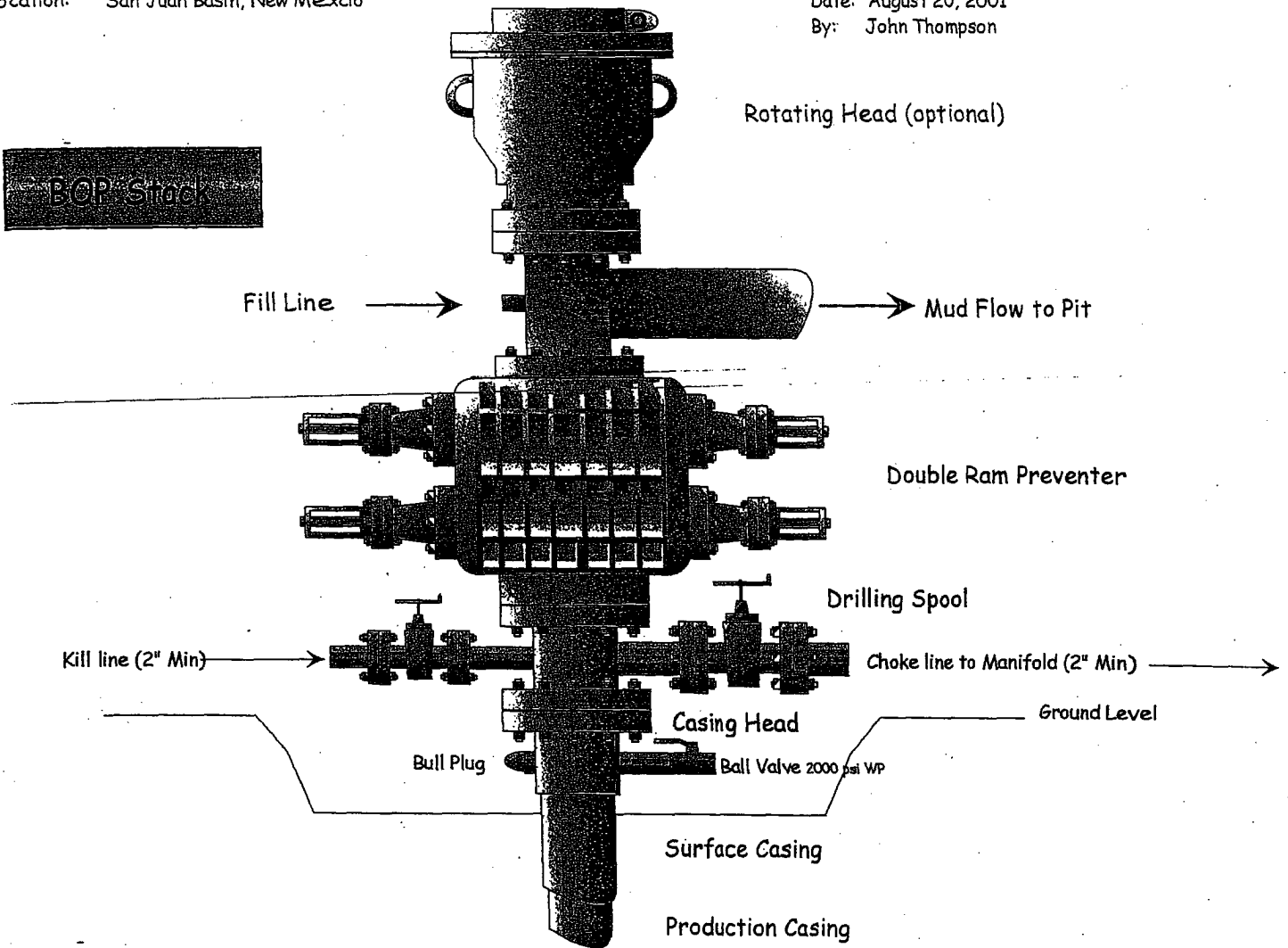
### Typical BOP setup

EXHIBIT #1

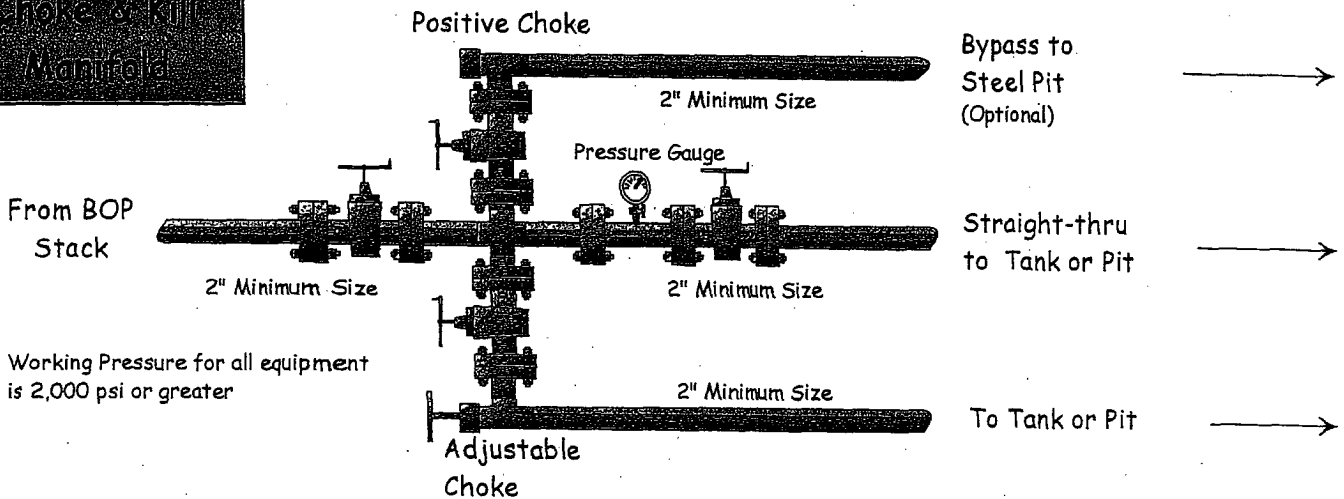
Location: San Juan Basin, New Mexico

Date: August 20, 2001

By: John Thompson



### Choke & Kill Manifold



Working Pressure for all equipment is 2,000 psi or greater