

District I  
1625 N. French Dr., Hobbs, NM 88240  
District II  
1301 W. Grand Avenue, Artesia, NM 88210  
District III  
1000 Rio Brazos Road, Aztec, NM 87410  
District IV  
1220 S. St. Francis Dr., Santa Fe, NM 87505

State of New Mexico  
Energy Minerals and Natural Resources

Oil Conservation Division  
1220 South St. Francis Dr.  
Santa Fe, NM 87505

Form C-144  
June 1, 2004

For drilling and production facilities, submit to appropriate NMOCD District Office.  
For downstream facilities, submit to Santa Fe office

**Pit or Below-Grade Tank Registration or Closure**

Is pit or below-grade tank covered by a "general plan"? Yes ☒ No ☐

Type of action: Registration of a pit or below-grade tank ☐ Closure of a pit or below-grade tank ☒

Operator: Koch Exploration Company, LLC Telephone: (505) 334-9111 e-mail address: clark23j@kochind.com or johnso4d@kochind.com

Address: PO Box 489, Aztec, NM 87410

Facility or well name: A B Geren 6A API #: 30-045-31388 U/L or Qtr/Qtr O Sec 29 T 29N R 9W

County: San Juan Latitude 36.41.34 Longitude 107.47.58 NAD: 1927 ☐ 1983 ☐ Surface Owner Federal ☒ State ☐ Private ☐ Indian ☐

**Pit**

Type: Drilling ☒ Production ☐ Disposal ☐

Workover ☐ Emergency ☐

Lined ☒ Unlined ☐

Liner type: Synthetic ☒ Thickness 12 mil Clay ☐

Pit Volume        bbl

**Below-grade tank**

Volume:        bbl Type of fluid:       

Construction material:       

Double-walled, with leak detection? Yes ☐ If not, explain why not       

Depth to ground water (vertical distance from bottom of pit to seasonal high water elevation of ground water.)

Less than 50 feet

(20 points)

50 feet or more, but less than 100 feet

(10 points)

X 100 feet or more

( 0 points)

0 points

Wellhead protection area: (Less than 200 feet from a private domestic water source, or less than 1000 feet from all other water sources.)

Yes

(20 points)

X No

( 0 points)

0 points

Distance to surface water: (horizontal distance to all wetlands, playas, irrigation canals, ditches, and perennial and ephemeral watercourses.)

X Less than 200 feet

(20 points)

20 points

200 feet or more, but less than 1000 feet

(10 points)

1000 feet or more

( 0 points)

**Ranking Score (Total Points)**

**20 points**

**If this is a pit closure:** (1) attach a diagram of the facility showing the pit's relationship to other equipment and tanks. (2) Indicate disposal location: (check the onsite box if you are burying in place) onsite ☒ offsite ☐ If offsite, name of facility       . (3) Attach a general description of remedial action taken including remediation start date and end date. (4) Groundwater encountered: No ☒ Yes ☐ If yes, show depth below ground surface        ft. and attach sample results. (5) Attach soil sample results and a diagram of sample locations and excavations.

Additional Comments:

I hereby certify that the information above is true and complete to the best of my knowledge and belief. I further certify that the above-described pit or below-grade tank has been/will be constructed or closed according to NMOCD guidelines ☐, a general permit ☒ or an (attached) alternative OGD-approved plan ☐

Date:       

Printed Name/Title John Clark, District Superintendent

Signature John Clark

Your certification and NMOCD approval of this application/closure does not relieve the operator of liability should the contents of the pit or tank contaminate ground water or otherwise endanger public health or the environment. Nor does it relieve the operator of its responsibility for compliance with any other federal, state, or local laws and/or regulations.

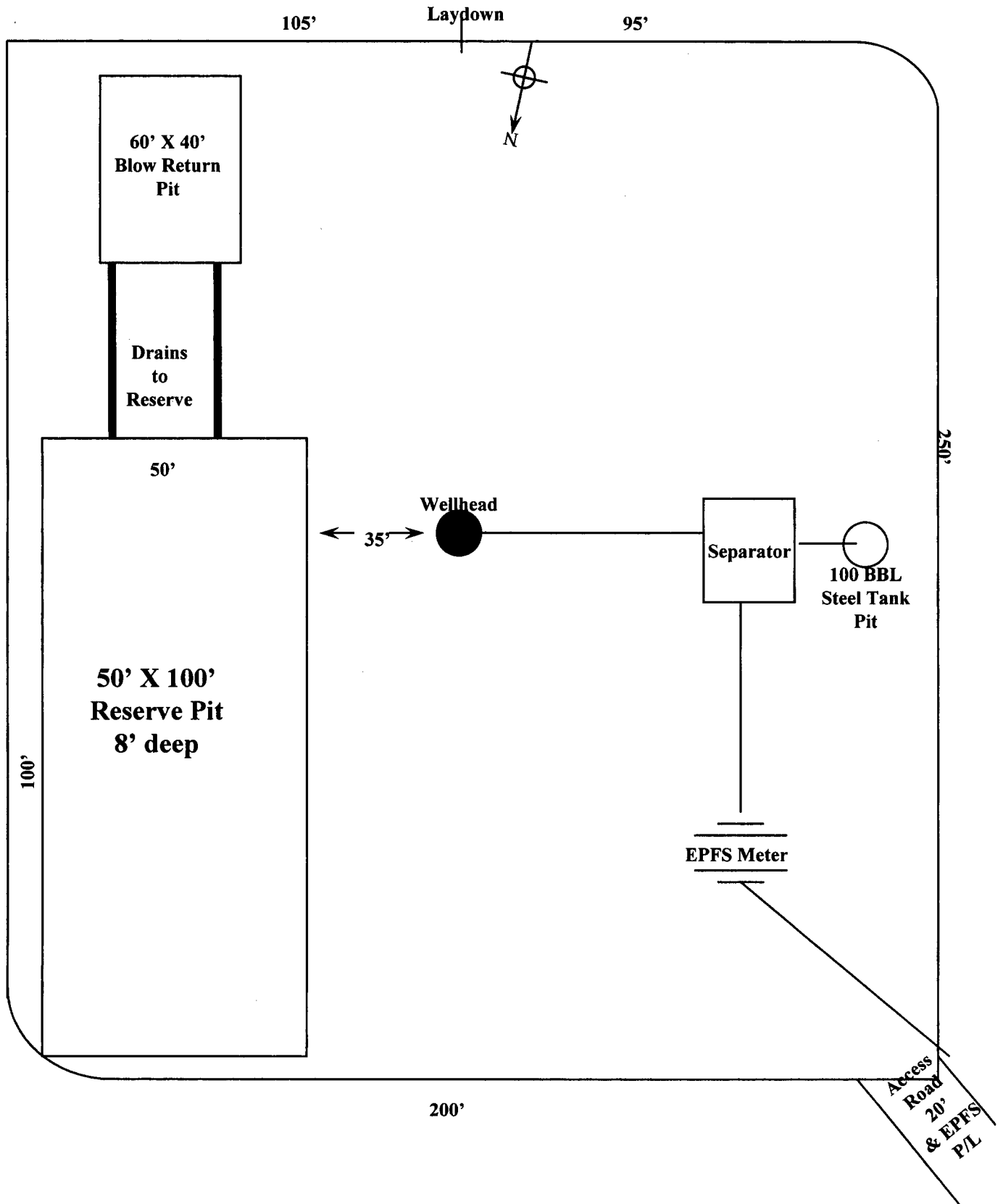
Approval: **DEPUTY OIL & GAS INSPECTOR, DIST. 3**

Printed Name/Title       

Signature Denny Fent

Date: NOV 24 2004

**KOCH EXPLORATION COMPANY LLC**  
**A B Geren 6A**  
**Sec 29, T29N, R9W**  
**1175' FSL & 1345' FEL - ELEVATION 5921'**



**AB Goren #6A**

Sec. 29, T29N, R9W, 1175' FSL & 1345' FEL

San Juan Co., New Mexico

API No. 30-045-31388 Lease No. SF 080245B

Upon completion of drilling/completion remaining liquids were removed from pit by truck to an approved disposal facility.

Prior to closing the pit, liner was cut off at mud level. The excess liner was hauled to a licensed disposal.

November 4 through November 5, 2004 the remaining waste in pit was encapsulated. This was accomplished by covering the remaining waste and liner with earthen materials. Surface area where pit was located was contoured according to BLM requirements, and reseeded with recommended BLM seed mixture.