

District I
1625 N. French Dr., Hobbs, NM 88240
District II
1301 W. Grand Avenue, Artesia, NM 88210
District III
1000 Rio Brazos Road, Aztec, NM 87410
District IV
1220 S. St. Francis Dr., Santa Fe, NM 87505

State of New Mexico
Energy Minerals and Natural Resources

Form C-101
May 27, 2004

Oil Conservation Division
1220 South St. Francis Dr.
Santa Fe, NM 87505

Submit to appropriate District Office

☐ AMENDED REPORT

APPLICATION FOR PERMIT TO DRILL, RE-ENTER, DEEPEN, PLUGBACK, OR ADD A ZONEXX

Operator Name and Address Patina San Juan, Inc. 5802 U. S. Highway 64 Farmington, NM 87401 (505) 632-8056		OGRID Number 173252
Property Code 34473	Property Name WILMERDING	API Number 30-045-32724
Proposed Pool 1 BASIN DAKOTA		Well No. #08
Proposed Pool 2 BLANCO MESA VERDE		

Surface Location

UL or lot no. H	Sec. 9	Township 31N	Range 13W	Lot Idn H	Feet from the 1475	North/South line NORTH	Feet from the 665	East/West line EAST	County SAN JUAN
--------------------	-----------	-----------------	--------------	--------------	-----------------------	---------------------------	----------------------	------------------------	--------------------

Proposed Bottom Hole Location If Different From Surface

UL or lot no.	Section	Township	Range	Lot Idn	Feet from the	North/South line	Feet from the	East/West line	County
---------------	---------	----------	-------	---------	---------------	------------------	---------------	----------------	--------

Additional Well Information

Work Type Code N	Well Type Code G	Cable/Rotary R	Lease Type Code P	Ground Level Elevation 5808'
Multiple N	Proposed Depth 7300'	Formation Basin Dakota	Contractor N/A	Spud Date JUNE 1, 2005
Depth to Groundwater >200'		Distance from nearest fresh water well >500'		Distance from nearest surface water >1000'
Pit: Liner: Synthetic <input type="checkbox"/> 12 mils thick Clay <input type="checkbox"/> Pit Volume: _____ bbls Drilling Method: Closed-Loop System <input type="checkbox"/> Fresh Water <input checked="" type="checkbox"/> Brine <input type="checkbox"/> Diesel/Oil-based <input type="checkbox"/> Gas/Air <input checked="" type="checkbox"/>				

Proposed Casing and Cement Program

Hole Size	Casing Size	Casing weight/foot	Setting Depth	Sacks of Cement	Estimated TOC
12 1/4"	9 5/8"	36#	250'	165 sx	SURFACE
8 3/4"	7"	23#	3400+/-	465 sx	SURFACE
6 1/4"	4 1/2"	11.6#	7300'	220 sx	3900'+-3300' or high

22 Describe the proposed program. If this application is to DEEPEN or PLUG BACK, give the data on the present productive zone and proposed new productive zone. Describe the blowout prevention program, if any. Use additional sheets if necessary.

Patina San Juan, Inc. proposes to drill a vertical well at the above described location and test the Basin Dakota and Blanco Mesa Verde formations as referenced in the attached drilling plan.

The Basin Dakota/Blanco Mesa Verde formations will be selectively perforated and completed.

The well will be connected to Williams Field Services gathering system.

23 I hereby certify that the information given above is true and complete to the best of my knowledge and belief. I further certify that the drilling pit will be constructed according to NMOCD guidelines ☒, a general permit ☐, or an (attached) alternative OCD-approved plan ☐.

Printed name: JEAN M. MUSE

Title: REGULATORY/ENGINEERING TECHNICIAN

E-mail Address: jmuse@patinasanjuan.com

Date: 12/06/04

Phone: 505-632-8056

OIL CONSERVATION DIVISION

Approved by:

Title:

Approval Date:

Expiration Date:

Conditions of Approval Attached ☐

District I
PO Box 1980, Hobbs, NM 88241-1980

District II
PO Drawer DD, Artesia, NM 88211-0719

District III
1000 Rio Brazos Rd., Aztec, NM 87410

District IV
PO Box 2088, Santa Fe, NM 87504-2088

State of New Mexico
Energy, Minerals & Natural Resources Department

OIL CONSERVATION DIVISION
PO Box 2088
Santa Fe, NM 87504-2088

Form C-102
Revised February 21, 1994
Instructions on back
Submit to Appropriate District Office
State Lease - 4 Copies
Fee Lease - 3 Copies

☐ AMENDED REPORT

WELL LOCATION AND ACREAGE DEDICATION PLAT

*API Number 30065-37724		*Pool Code 72319/71599	*Pool Name Blanco Mesa Verde BASIN DAKOTA	
*Property Code 36473		*Property Name WILMERDING 09		*Well Number 08
*OGRID No. 173252		*Operator Name PATINA SAN JUAN, INC.		*Elevation 5808'

10 Surface Location

UL or lot no.	Section	Township	Range	Lot Idn	Feet from the	North/South line	Feet from the	East/West line	County
H	9	31N	13W		1475	NORTH	665	EAST	SAN JUAN

11 Bottom Hole Location If Different From Surface

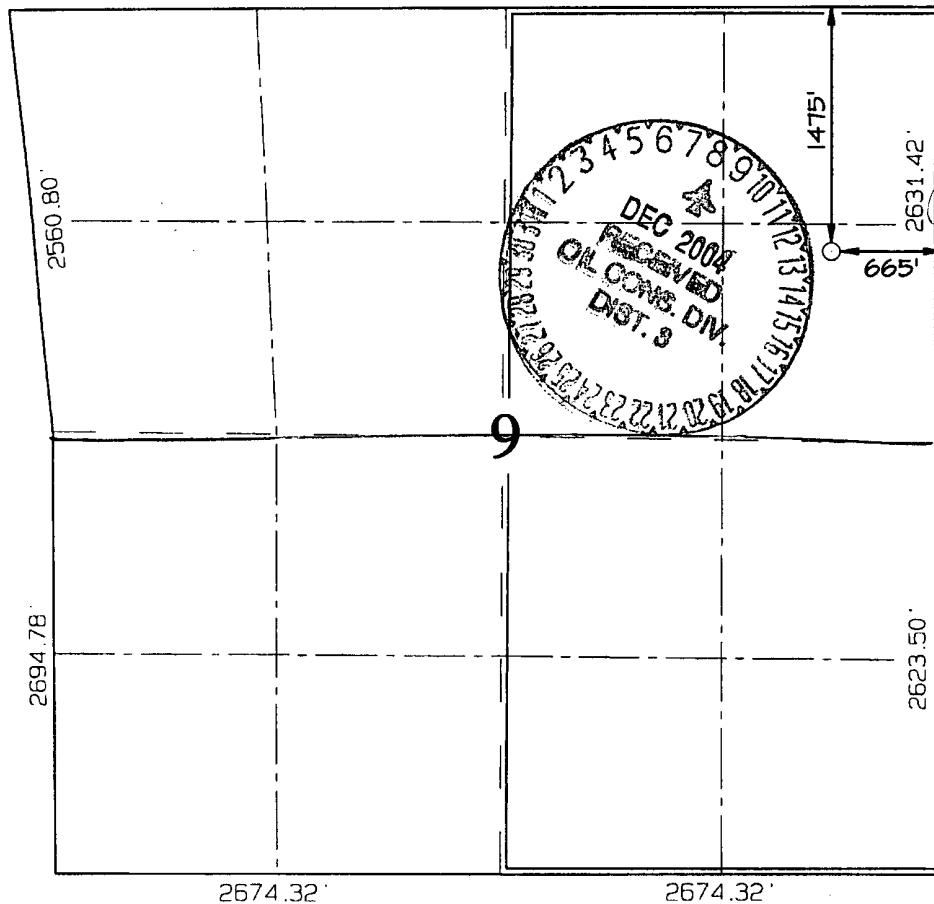
UL or lot no.	Section	Township	Range	Lot Idn	Feet from the	North/South line	Feet from the	East/West line	County

12 Dedicated Acres 320.0 Acres - (E/2) DK (N/2) M.V.	13 Joint or Infill	14 Consolidation Code	15 Order No.
--	--------------------	-----------------------	--------------

NO ALLOWABLE WILL BE ASSIGNED TO THIS COMPLETION UNTIL ALL INTERESTS HAVE BEEN CONSOLIDATED
OR A NON-STANDARD UNIT HAS BEEN APPROVED BY THE DIVISION

2994.42'

2632.08'



17 OPERATOR CERTIFICATION

I hereby certify that the information contained herein is true and complete to the best of my knowledge and belief

Signature: *J. M. Muse*
Printed Name: JEAN M. MUSE
Title: Reg. Engr'g Tech
Date: 12/06/04

18 SURVEYOR CERTIFICATION

I hereby certify that the well location shown on this plat was plotted from field notes of actual surveys made by me or under my supervision, and that the same is true and correct to the best of my belief.

Survey Date: OCTOBER 29, 2004

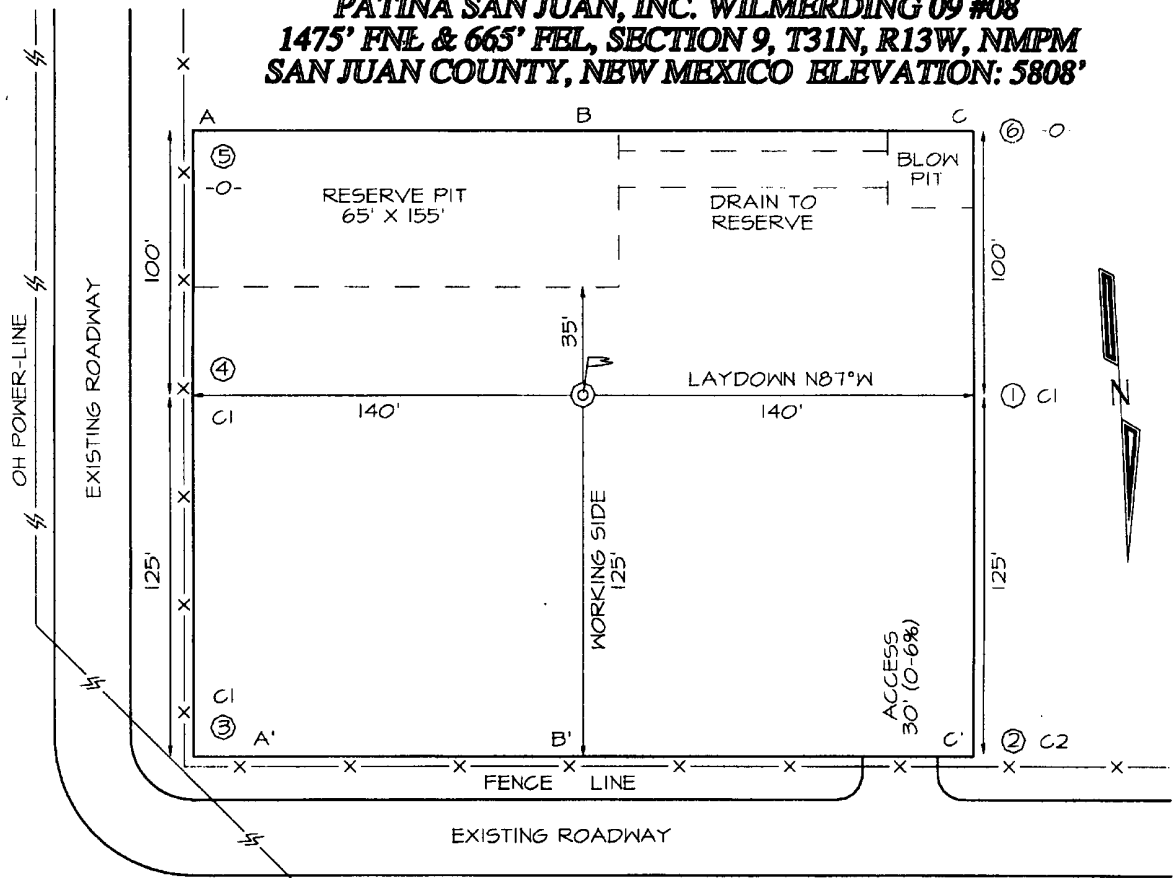
Signature and Seal of Professional Surveyor



Signature: JASON C. EDWARDS
Certificate Number: 15269

PATINA SAN JUAN, INC. WILMERDING 09 #08
1475' FNL & 665' FEL, SECTION 9, T31N, R13W, NMPM
SAN JUAN COUNTY, NEW MEXICO ELEVATION: 5808'

LATITUDE: 36°55'04"
LONGITUDE: 108°12'06"
 DATUM: NAD1927

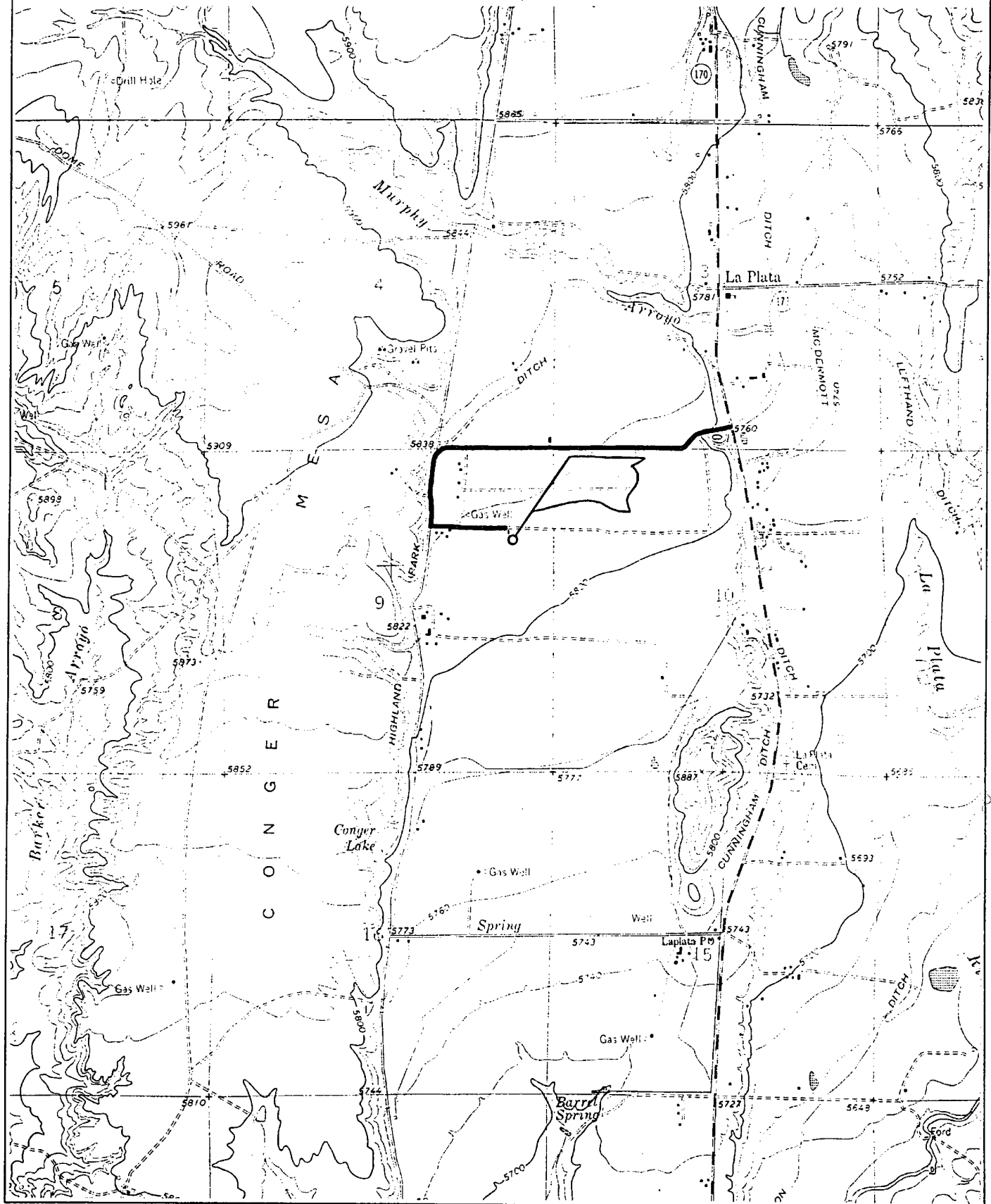


A-A'						
5818'						
5808'						
5798'						

B-B'						
5818'						
5808'						
5798'						

C-C'						
5818'						
5808'						
5798'						

PATINA SAN JUAN, INC. WILMERDING 09 #08
1475' FNL & 665' FEL, SECTION 9, T31N, R13W, N.M.P.M.
SAN JUAN COUNTY, NEW MEXICO



Willmerding 09 No. 08
General Drilling Plan
Patina San Juan, Inc.
San Juan County, New Mexico

PRESSURE CONTROL EQUIPMENT:

BOP equipment will be tested to the lesser of its rated working pressure, 70-percent of the internal yield of the surface casing or 1,000 psi. See attachments for BOP and choke manifold diagrams.

Production Hole BOP Requirements and Test Plan

11" – 2,000 psi single ram (blind)

11" – 2,000 psi single ram (pipe)

Test as follows:

- | | | |
|------------------------------|------------------|---------------|
| a) Pipe rams: | 1,000 psi (High) | 250 psi (low) |
| b) Choke manifold and lines: | 1,000 psi (High) | 250 psi (low) |

All ram type preventers and related equipment will be hydraulically tested at nipple-up. They will also be retested in either of the following events:

- A pressure seal is broken.
- 30 days have elapsed since the last successful test of the equipment.

Furthermore, BOP's will be checked daily as to mechanical operating condition. All ram type preventers will have hand wheels, which will be operative and accessible at the time the preventers are installed. See attached Exhibit for details on the BOP equipment.

AUXILIARY EQUIPMENT:

- a) Manually operated kelly cock (upper and lower)
- b) Full opening manually operated safety valves in the full open position, capable of fitting all drill stem connections.

CASING DESIGN:

Casing Program:

Hole Size

12 1/4"

8 3/4"

6 1/4"

Depth

250'

4200' +/- / 150' below Menefee top

7300' / through Dakota

Casing Size

9 5/8"

7"

4 1/2"

Casing Size	Casing Type	Top (MD)	Bottom (MD)	Wt. (lb./ft)	Grade	Thread	Condition
9-5/8"	Surface	0'	250'	36.0	J55	STC	New
7"	Intermediate	0'	4200' +/-	23.0	N80	LTC	New
4 1/2"	Production	4000'	7300'	11.6	N80	LTC	New

Casing Data				Collapse (psi)	Burst (psi)	Min. Tensile (Lbs.)
OD	Wt/Ft	Grade	Thread			
9-5/8"	36.0 lbs.	J55	STC	2,020	3,520	394,000
7"	23.0 lbs.	N80	LTC	3,830	6,340	442,000
4 1/2"	11.6 lbs.	N80	LTC	6,350	7,780	223,000

MINIMUM CASING DESIGN FACTORS:

COLLAPSE: 1.125

BURST: 1.00

TENSION: 1.80

Area Fracture Gradient Range: 0.7 – 0.8 psi/foot

Maximum anticipated reservoir pressure: 2,500 psi

Maximum anticipated mud weight: 9.0 ppg

Maximum surface treating pressure: 3,500 - 3,750 psi

Float Equipment:

Surface Casing: Guide shoe on bottom and 3 centralizers on the bottom 3 joints.

Intermediate Casing: Float shoe on bottom joint and a float collar one joint up from float shoe. One centralizer 10 ft above float shoe and nine centralizers spaced every joint above the float collar. Stage tool above the Cliffhouse formation. One centralizer below stage tool and one centralizer above stage tool.

Production Casing: 4 1/2" whirler type cement nosed guide shoe and a float collar on top of bottom joint with centralizers over potential hydrocarbon bearing zones.

CEMENTING PROGRAMS:

9-5/8" Surface casing:

165 sxs Type III cement with 2% CaCl₂, 1/4#/sx cellofakes. 100% excess to circulate cement to surface. WOC 12 hrs. Pressure test surface casing to 1000 psi for 30 minutes.

Slurry weight: 15.2 ppg
Slurry yield: 1.27 ft³/sack

Volume basis:	40' of 9-5/8" shoe joint	17 cu ft
	300' of 12-1/4" x 9-5/8" annulus	94 cu ft
	<u>100% excess (annulus)</u>	<u>94 cu ft</u>
	Total	205 cu ft

Note:

1. Design top of cement is the surface.
2. Have available 100 sx Type III cement with 2% CaCl₂ for top out purposes.

7" Intermediate Casing:

1st Stage: 100 sacks of Type III cement

Slurry weight: 14.5 ppg
Slurry yield: 1.4 ft³/sack

2nd Stage: (Stage tool at 3400' +/-): 365 sacks of Premium Lite FM

Slurry weight: 12.4 ppg
Slurry yield: 1.92 ft³/sack

Volume Basis:	40' of 7" shoe joint	9 cu ft
	3900' of 7" x 8 3/4" annulus	586 cu ft
	300' of 7" x 9 5/8" hole	50 cu ft
	<u>30% excess (annulus)</u>	<u>176 cu ft</u>
	Total	821 cu ft

Note:

1. Design top of cement is surface.
2. Actual cement volumes to be based on caliper log plus 30%.

4 1/2" Production casing:

Stage 1: 220 sacks of Premium Lite High Strength FM out guide shoe.

Slurry weight: 12.3 ppg

Slurry yield: 2.13 ft³/sack

Volume basis:	40' of 4 1/2" shoe joint	5 cu ft
	4 1/2 " x 6 1/4" hole	318 cu ft
	4 1/2" x 7" casing	33 cu ft
	<u>30% excess (annulus)</u>	<u>107 cu ft</u>
	Total	463 cu ft

Note:

1. Design top of cement is 3900 +/- ft. or 300 ft. into 7" intermediate casing.
2. Actual cement volumes to be based on caliper log plus 30%.

MUD PROGRAM:

The surface hole will be drilled with spud mud. Gel and polymer sweeps will be used from surface to 300 feet as necessary to keep hole clean.

The intermediate hole will be drilled with water until mud up at about 3100 ft. From 3100' to 4200', intermediate casing depth, will be drilled with LSND mud. Anticipated mud weight ranges from 8.5 – 9.0 ppg. Mud weight will be increased as required to maintain hole stability and control gas influx.

The production hole will be drilled with air or air/mist.

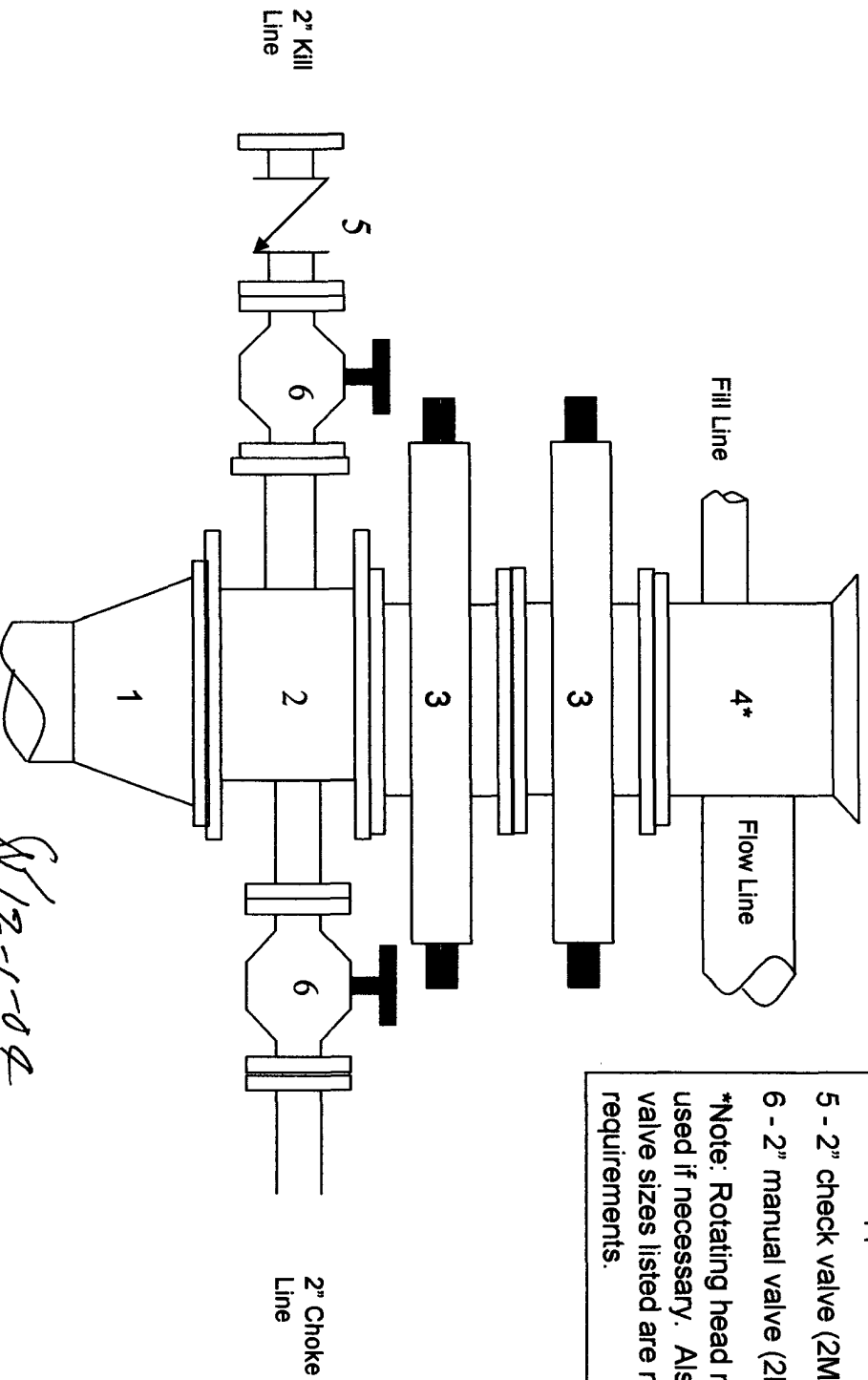
Sufficient mud materials to maintain stable wellbore conditions (for either well control or lost circulation scenarios) will be maintained at the well site.

No chrome-based additives will be used in the mud system.

Wilmerding 09 No. 08

2000 psi BOP stack

Minimum requirements



Components

- 1 - Wellhead 9-5/8" (2M)
- 2 - Drilling spool 11" (2M)
- 3 - A double or two single rams with blinds on bottom 11" (2M)

4 - Bell nipple*

5 - 2" check valve (2M)

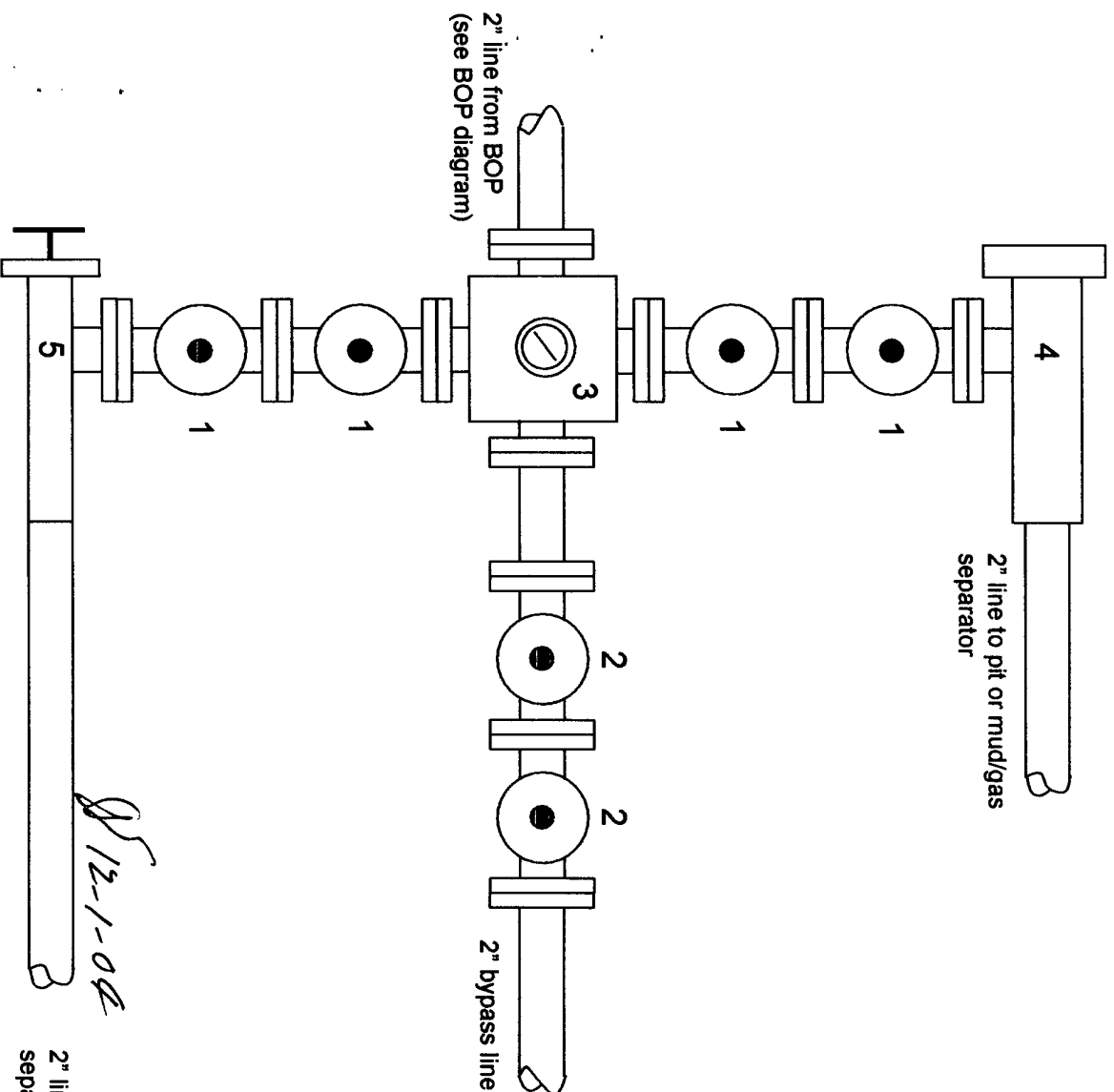
6 - 2" manual valve (2M)

*Note: Rotating head may also be used if necessary. Also, all line and valve sizes listed are minimum requirements.

8/12-1-02

Wilmerding 09 No. 08 2000 psi Choke Manifold Minimum requirements

Components
1 – 2" Valve (2M)
2 – 2" Valve (2M)
3 – Mud cross with gauge (2M) flanged below the gage.
4 – Adjustable beam choke (2M)
5 – Adjustable needle choke (2M)
Note: All line and valve sizes listed are minimum requirements.



2" line to pit or mud/gas separator