

UNITED STATES  
DEPARTMENT OF THE INTERIOR  
BUREAU OF LAND MANAGEMENT

APPLICATION FOR PERMIT TO DRILL OR REENTER

FORM APPROVED  
OMB No. 1004-0136  
Expires November 30, 2000

5. Lease Serial No.

**Jicarilla Contract #97**

6. If Indian, Allottee or Tribe Name

**Jicarilla Apache Tribe**

7. If Unit or CA Agreement, Name and No.

8. Lease Name and Well No.

**Tribal C #3Y**

9. API Well No.

**30-039-29390**

10. Field and Pool, or Exploratory

**Basin DK/Blanco Mesa Verde**

11. Sec., T., R., M., or Blk. and Survey or Area

**J Sec. 6, T26N, R3W**

12. County or Parish

**Rio Arriba**

13. State

**NM**

1a. Type of Work: ☒ DRILL

☐ REENTER

b. Type of Well: ☐ Oil Well ☒ Gas Well ☐ Other ☐ Single Zone ☒ Multiple Zone

2. Name of Operator

**Patina San Juan, Inc.**

3a. Address

**c/o Walsh Engineering, 7415 E. Main, Farmington, NM 87402**

3b. Phone No. (include area code)

**(505) 327-4892**

4. Location of Well (Report location clearly and in accordance with any State requirements. \*)

At surface **2450' FSL and 1980' FEL**

At proposed prod. Zone

Distance in miles and direction from nearest town or post office\*

**21 miles south of Dulce, NM**

15. Distance from proposed\* location to nearest property or lease line, ft. (Also to nearest drig. unit line, if any)

**660'**

16. No. of Acres in lease

**320+**

17. Spacing Unit dedicated to this well

**320 acres E/2**

18. Distance from proposed location\* to nearest well, drilling, completed, applied for, on this lease, ft.

**1600'**

19. Proposed Depth

**8330' +/-**

20. BLM/BIA Bond No. on file

21. Elevations (Show whether DF, KDB, RT, GL, etc.)

**7176' GL**

22. Approximate date work will start\*

**August 2004**

23. Estimated duration

**3 weeks**

24. Attachments

The following, completed in accordance with the requirements of Onshore Oil and Gas Order No. 1, shall be attached to this form:

1. Well plat certified by a registered surveyor.

2. A Drilling Plan.

3. A Surface Use Plan (if the location is on National Forest System Lands, the SUPO shall be filed with the appropriate Forest Service Office.

4. Bond to cover the operations unless covered by an existing bond on file (see Item 20 above).

5. Operator certification.

6. Such other site specific information and/or plans as may be required by the authorized office.

25. Signature

*Paul C. Thompson*

Name (Printed/Typed)

**Paul C. Thompson, P.E.**

Date

**4/29/2004**

Title

Agent

Approved by (Signature)

**Assistant Field Manager**

Name (Printed/Typed)

Date

**JAN 3 2005**

Title

**/s/ David R. Sitzler**

Office

Application approval does not warrant or certify that the applicant holds legal or equitable title to those rights in the subject lease which would entitle the applicant to conduct operations thereon.

Conditions of approval, if any, are attached.

Title 18 U.S.C. Section 1001 and Title 43 U.S.C. Section 1212, make it a crime for any person knowingly and willfully to make to any department or agency of the United States any false, fictitious or fraudulent statements or representations as to any matter within its jurisdiction.

\*(Instructions on reverse)

HOLD C104 FOR Change in status to either Tribal C #4 or #4B in Basin Dakota and change in status to either " " #4B or #3A in Blanco Mesa Verde

District I  
PO Box 1980, Hobbs, NM 88241-1980

State of New Mexico  
Energy, Minerals & Natural Resources Department

Form C-102

Revised February 21, 1994

Instructions on back

Submit to Appropriate District Office

State Lease - 4 Copies

Fee Lease - 3 Copies

District II  
PO Drawer DD, Artesia, NM 88211-0719

District III  
1000 Rio Brazos Rd., Aztec, NM 87410

District IV  
PO Box 2088, Santa Fe, NM 87504-2088

OIL CONSERVATION DIVISION  
PO Box 2088  
Santa Fe, NM 87504-2088

☐ AMENDED REPORT

WELL LOCATION AND ACREAGE DEDICATION PLAT

*API Number <b>30-039-29390</b>		*Pool Code 72319 / 71599		*Pool Name BLANCO MESAVERDE / BASIN DAKOTA	
*Property Code <b>24080</b>		*Property Name TRIBAL C			*Well Number 3Y
*GRID No. 173252		*Operator Name CORDILLERA ENERGY, INC. / <b>TATINA SAN JUAN</b>			*Elevation 7176'

10 Surface Location

UL or lot no.	Section	Township	Range	Lot Idn	Feet from the	North/South line	Feet from the	East/West line	County
J	6	26N	3W		2450	SOUTH	1980	EAST	RIO ARriba

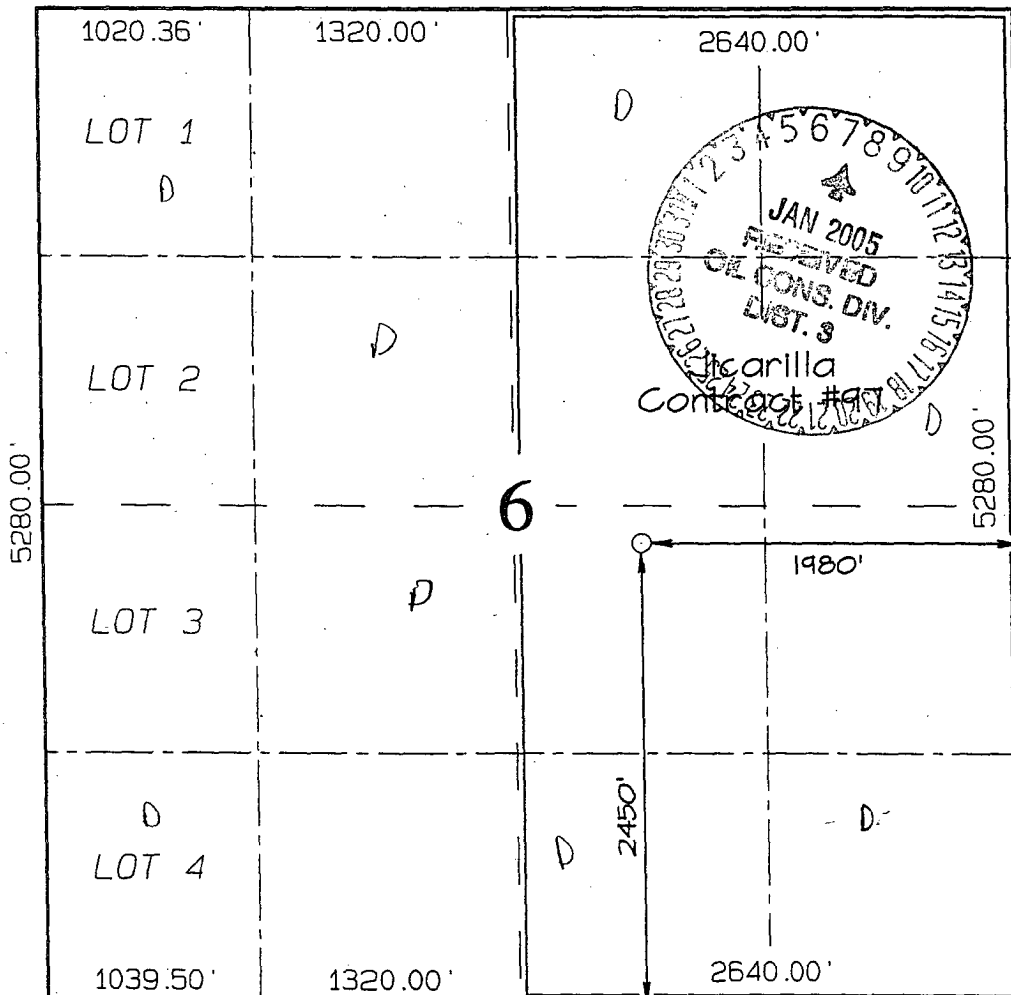
11 Bottom Hole Location If Different From Surface

UL or lot no.	Section	Township	Range	Lot Idn	Feet from the	North/South line	Feet from the	East/West line	County

12 Dedicated Acres 320.0 Acres - (E/2)	13 Joint or Infill Y	14 Consolidation Code	15 Order No.
---	-------------------------	-----------------------	--------------

NO ALLOWABLE WILL BE ASSIGNED TO THIS COMPLETION UNTIL ALL INTERESTS HAVE BEEN CONSOLIDATED  
OR A NON-STANDARD UNIT HAS BEEN APPROVED BY THE DIVISION

16



17 OPERATOR CERTIFICATION

I hereby certify that the information contained herein is true and complete to the best of my knowledge and belief

**Paul C. Thompson**  
Signature

**Paul C. Thompson**  
Printed Name

**AGENT**  
Title

**4/29/04**  
Date

18 SURVEYOR CERTIFICATION

I hereby certify that the well location shown on this plat was plotted from field notes of actual surveys made by me or under my supervision, and that the same is true and correct to the best of my belief.

Date of Survey: MARCH 27, 2003

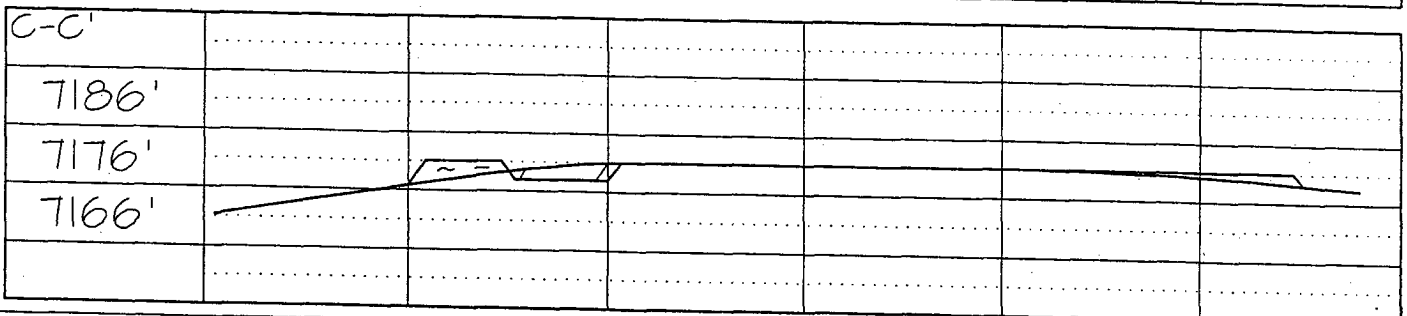
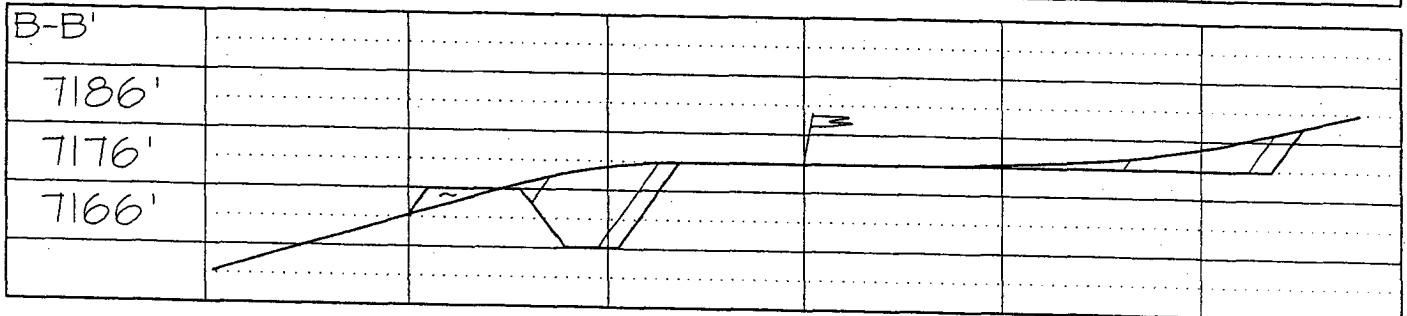
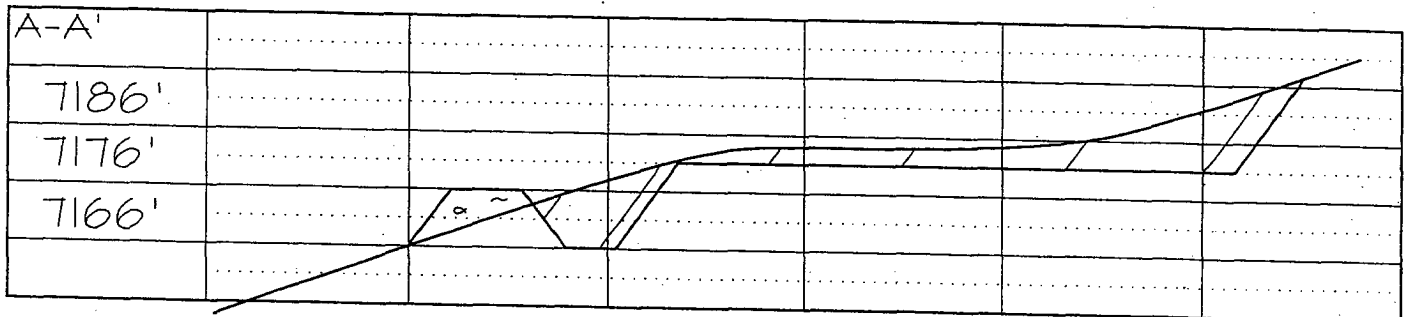
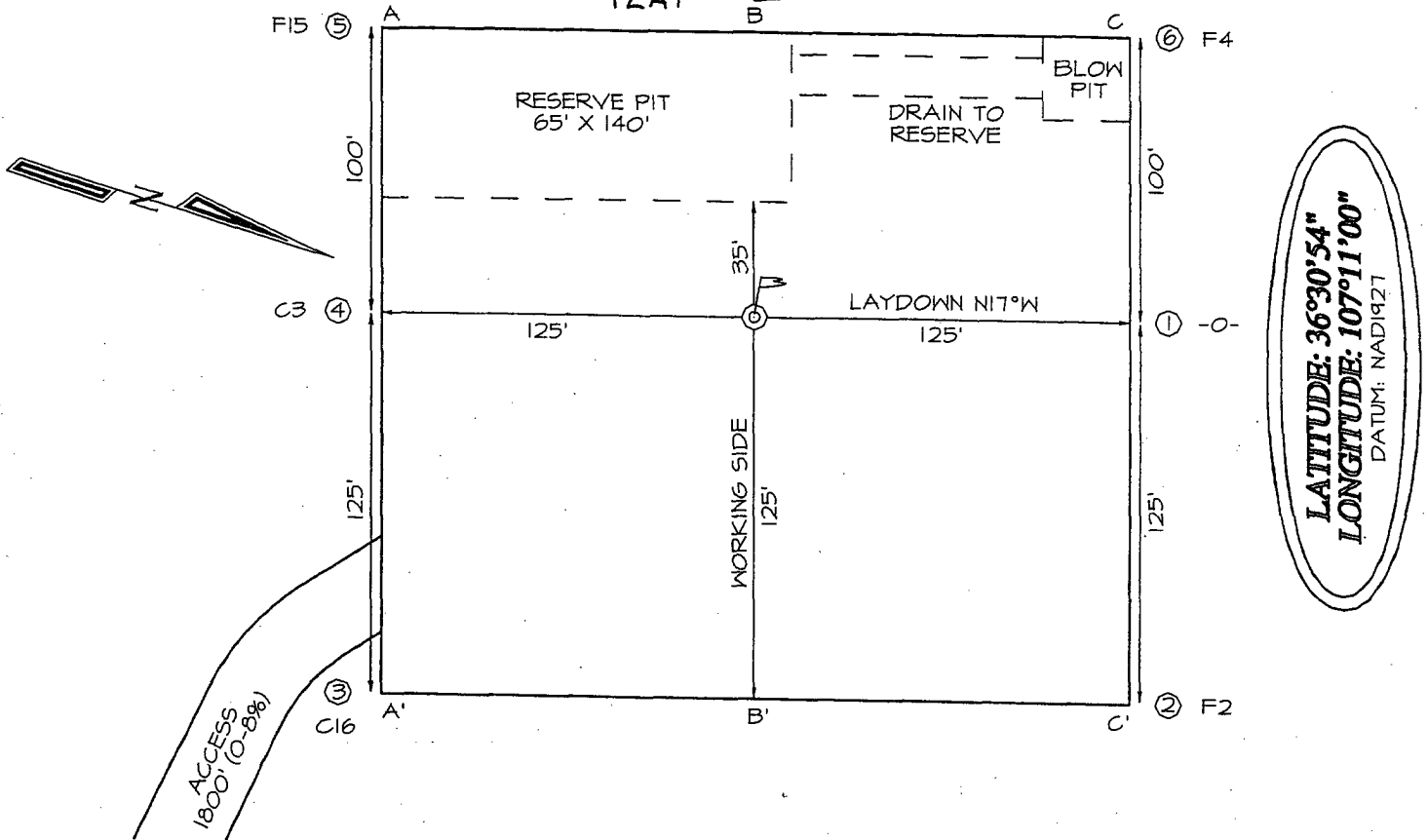
Signature and Seal of Professional Surveyor



**JASON C. EDWARDS**  
Certificate Number 15269

**CORDILLERA ENERGY, INC. TRIBAL C #3Y**  
**2450' ASL & 1980' FEL, SECTION 6, T24N, R3W, NMMPM**  
**RIO ARriba COUNTY, NEW MEXICO GROUND ELEVATION: 7176'**

PLAT # 2



CORDILLERA ENERGY, INC.  
OPERATIONS PLAN  
Tribal C #3Y

I. Location: 2450' FSL & 1980' FEL                      Date: April 28, 2004  
              Sec 6, T26N, R3W  
              Rio Arriba County, NM

Field: Blanco MV & Basin DK                              Elev: GL 7176'  
Surface: Jicarilla Apache Tribe  
Minerals: Jicarilla Contract #97

II. Geology: Surface formation \_ San Jose

<u>Formation Tops</u>	<u>Depths</u>
Ojo Alamo	
Kirtland	
Pictured Cliffs	3705'
Cliff House	5530'
Menefee	5655'
Point Lookout	5780'
Greenhorn	8055'
Graneros	8075'
Dakota	8135'
Total Depth	8330'

Estimated depths of anticipated water, oil, gas, and other mineral bearing formations which are expected to be encountered:

Water and gas - 3705', 5530', 5780', 8135'.

B. Logging Program: Induction/GR and density logs at TD.

C. No over pressured zones are expected in this well. No H<sub>2</sub>S zones will be penetrated in this well. Max. BHP = 2500 psig.

III. Drilling

A. Contractor:

B. Mud Program:

The surface hole will be drilled with a fresh water mud.

The intermediate hole will be drilled with a fresh water polymer mud. The weighting material will be drill solids or if conditions dictate, barite. The maximum mud weight expected is 8.5 ppg.

The production hole will be drilled with air or air/mist.

C. Minimum Blowout Control Specifications:

Double ram type 2000 psi working pressure BOP with a rotating head. See the attached Exhibit #1 for details on the BOP equipment. All ram type preventers and related equipment will be hydraulically tested at nipple-up and after any use under pressure to 1000 psi.

The blind rams will be hydraulically activated and checked for operational readiness each time pipe is pulled out of the hole. All checks of the BOP stack and equipment will be noted on the daily drilling report. The BOP equipment will include a kelly cock, floor safety valve, and choke manifold all rated to 2000 psi.

IV. Materials

A. Casing Program:

Hole Size	Depth	Casing Size	Wt. & Grade
12-1/4"	250'	9-5/8"	36# J-55
8-3/4"	4035'	7"	20# J-55
6-1/4"	8330'	4-1/2"	11.6# N-80

B. Float Equipment:

a) Surface Casing: Notched collar on bottom and 3 centralizers on the bottom 3 joints.

b) Intermediate Casing: 7" cement guide shoe and self fill insert float collar. Place float one joint above shoe. Ten centralizers spaced every other joint above shoe and ten turbolizers every other joint from 1500'.

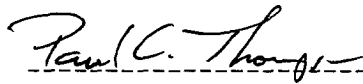
c) Production Casing: 4-1/2" whirler type cement nosed guide shoe and a float collar on top of the bottom joint.

V. Cementing:

**Surface casing: 9-5/8"** - Use 140 sx (165 cu. ft.) of C1 "B" with 2%  $\text{CaCl}_2$  (Yield = 1.18 cu. ft./sk; slurry weight = 15.6 PPG). 100% excess to circulate cement to surface. WOC 12 hours. Pressure test surface casing to 1000 psi for 30 min.

**Intermediate Casing: 7"** - Before cementing circulate hole with at least 1-1/2 hole volumes of mud. Precede cement with 30 bbls of fresh water. **Lead** with 515 sx (1076 cu.ft) of Type III 65/35 poz with 8% gel, 1%  $\text{CaCl}_2$ , 1/4#/sk. Celloflake. (Yield = 2.09 cu.ft./sk; slurry weight = 12.1 PPG). **Tail** with 100 sx (139 cu.ft.) of Type III with 1%  $\text{CaCl}_2$ , 1/4#/sk. Celloflake. (Yield = 1.39 cu. ft./sk; slurry weight = 14.5 PPG). Total cement volume is 1215 cu.ft. (100% excess to circulate cement to surface). WOC for 12 hrs. Pressure test the BOP and casing to 1500 psi.

**Production Casing: 4-1/2"** - Blow hole clean. Precede cement with 20 bbls of gel water and 10 bbls of water. **Lead** with 390 sx (772 cu.ft.) of Premium Lite HS with 0.65% FL-52, 0.32% CD-32, 1/4 #/sk celloflake, and 4% phenoseal. (Yield = 1.98 cu.ft./sk; slurry weight = 12.5 PPG). **Tail** with 100 sx (196 cu.ft.) of Premium Lite HS with 0.65% FL-52, and 0.32% CD-32. (Yield = 1.96 cu.ft./sk; slurry weight = 12.5 PPG). Total cement volume is 968 cu.ft. (70% excess to circulate 100' above the intermediate casing shoe).

  
-----  
Paul C. Thompson, P.E.

# PATINA SAN JUAN, INC

## Well Control Equipment Schematic for 2M Service

Attachment to Drilling Technical Program

### Exhibit #1 Typical BOP setup

Location: San Juan Basin, New Mexico

Date: August 20, 2001

By: John Thompson (Walsh E&P)

