

UNITED STATES
DEPARTMENT OF THE INTERIOR

GEOLOGICAL SURVEY

APPLICATION FOR PERMIT TO DRILL, DEEPEN, OR PLUG BACK

1a. TYPE OF WORK

DRILL ☒DEEPEN ☐PLUG BACK ☐

b. TYPE OF WELL

OIL
WELL ☐GAS
WELL ☒

OTHER

SINGLE
ZONE ☒MULTIPLE
ZONE ☐

2. NAME OF OPERATOR

Tenneco Oil Company

3. ADDRESS OF OPERATOR

720 South Colorado Blvd., Denver, CO 80222

4. LOCATION OF WELL (Report location clearly and in accordance with any State requirements.)*

At surface

545' FSL, 1230' FWL

At proposed prod. zone

14. DISTANCE IN MILES AND DIRECTION FROM NEAREST TOWN OR POST OFFICE*

See Point 1 B, Surface Use Plan

15. DISTANCE FROM PROPOSED*

LOCATION TO NEAREST

PROPERTY OR LEASE LINE, FT.

(Also to nearest drlg. unit line, if any)

18. DISTANCE FROM PROPOSED LOCATION*

TO NEAREST WELL, DRILLING, COMPLETED,
OR APPLIED FOR, ON THIS LEASE, FT.

16. NO. OF ACRES IN LEASE

19. PROPOSED DEPTH

2850'

17. NO. OF ACRES ASSIGNED
TO THIS WELL

167.32 acres

20. ROTARY OR CABLE TOOLS

Rotary

21. ELEVATIONS (Show whether DF, RT, GR, etc.)

6296' G.L.

22. APPROX. DATE WORK WILL START*

May 15, 1979

23. PROPOSED CASING AND CEMENTING PROGRAM

SIZE OF HOLE	SIZE OF CASING	WEIGHT PER FOOT	SETTING DEPTH	QUANTITY OF CEMENT
12-1/4"	8-5/8"	24#	150'	Sufficient to circulate to surface
7-7/8"	4-1/2"	10.5#	2850'	Sufficient to circulate to surface

1. The geological name of the surface formation is Tertiary San Jose.

2&3. Estimated Formation Tops:

Fruitland

Pictured Cliffs + 2650' possible oil/gas producer

T.D. + 2850' possible oil/gas producer

4. Run 8-5/8" OD, K-55 new casing to + 150' and circulate cement to surface. Run 4-1/2" OD, K-55 new casing to + 2850' and cement with sufficient volume to circulate to surface. Casinghead will be an approved API type.

5. Blowout Preventors: Hydraulic, double ram, 10". One set of rams will be provided for each size drill pipe in the hole. One set of blind rams at all times. Fill line will be 2", kill line will be 2", choke relief line will be 2" with variable choke. BOPs will be installed, tested and in working order before drilling below surface casing and shall be maintained ready for use until drilling operations are completed. BOPs, drills and tests will be recorded in the IADC Drilling Report. They shall be checked every 24 hours. All rig equipment will be tested to above BOE ratings.

6. Drilling Mud Program: 0 - 150' native solids, use sufficient viscosity to clean hole and run casing. 150' - T.D. low solids.

7. Auxiliary Equipment:

a. Kelly cock will be in use at all times.

b. Stabbing valve to fit drill pipe will be present on floor at all times.

c. Mud monitoring will be visual, no abnormal pressures are anticipated in this area.

d. Floats at bits.

e. Drill string safety valve(s) to fit all pipe in the drill string will be maintained on the rig floor while drilling operations are in progress.

f. Rotating head will be used while drilling with gas.

8. No cores will be taken. Samples will consist of 30' samples from 150' to T.D. Well surveys will consist of GR/FDC/CNL/Caliper from T.D. to 2000' above T.D. SP/Induction/SN/GR from T.D. to surface.

9. No abnormal pressures or temperatures are anticipated. See point #5 for blowout prevention equipment.

10. The drilling of this well will take approximately 10 days. The gas is not yet contracted.

IN ABOVE SPACE DESCRIBE PROPOSED PROGRAM: If proposal is to deepen or plug back, give data on present productive zone and proposed new productive zone. If proposal is to drill or deepen directionally, give pertinent data on subsurface locations and measured and true vertical depths. Give blowout prevention program, if any.

24.

SIGNED

Q. Q. Myers

TITLE Div. Production Manager

DATE

March 28, 1979

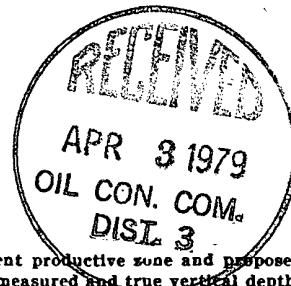
(This space for Federal or State office use)

PERMIT NO.

APPROVAL DATE

NWU-R-3669

ok Brub



**NEW MEXICO OIL CONSERVATION COMMISSION
WELL LOCATION AND ACREAGE DEDICATION PLAT**

Form C-102
Supersedes C-128
Effective 1-1-65

All distances must be from the outer boundaries of the Section.

Operator TENNECO OIL COMPANY			Lease FLORANCE		Well No. 116
Unit Letter N	Section 7	Township 30N	Range 8W	County San Juan	
Actual Footage Location of Well: 545 feet from the South line and 1230 feet from the West line					
Ground Level Elev. 6296	Producing Formation Pictured Cliffs		Pool	Dedicated Acreage: 167.32 Acres	

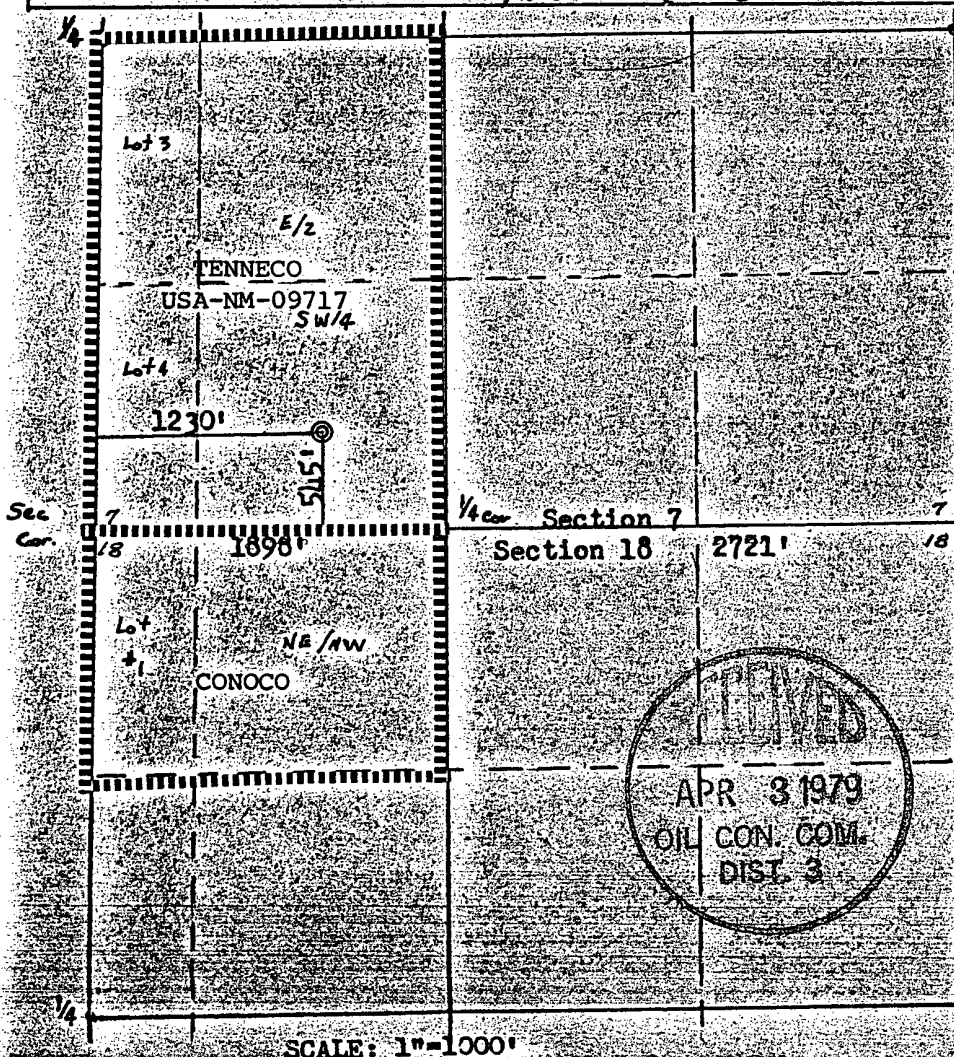
1. Outline the acreage dedicated to the subject well by colored pencil or hachure marks on the plat below.
2. If more than one lease is dedicated to the well, outline each and identify the ownership thereof (both as to working interest and royalty).
3. If more than one lease of different ownership is dedicated to the well, have the interests of all owners been consolidated by communitization, unitization, force-pooling, etc?

☒ Yes ☐ No If answer is "yes" type of consolidation Communitization in progress.

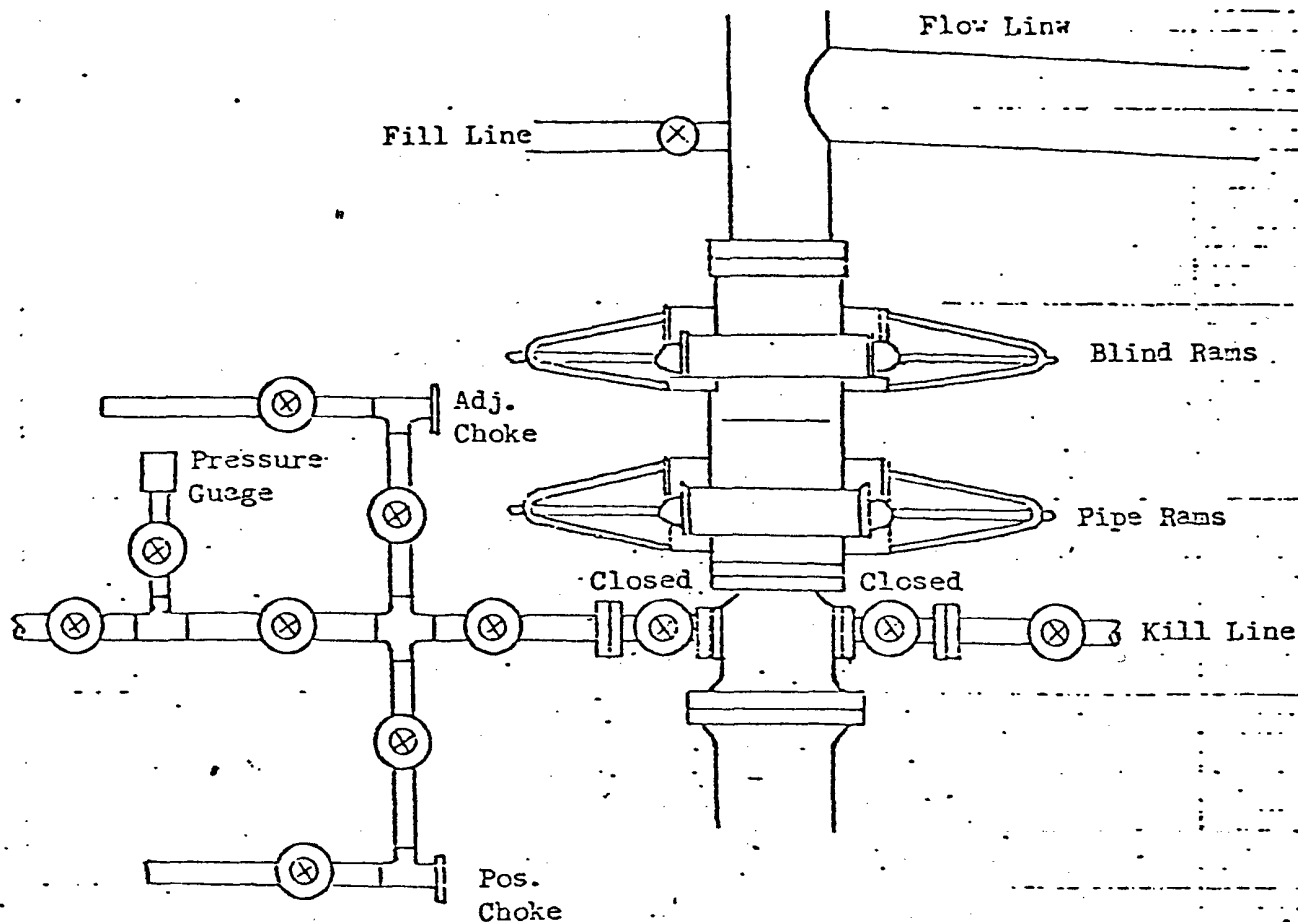
If answer is "no," list the owners and tract descriptions which have actually been consolidated. (Use reverse side of this form if necessary.)

No allowable will be assigned to the well until all interests have been consolidated (by communitization, unitization, forced-pooling, or otherwise) or until a non-standard unit, eliminating such interests, has been approved by the Commission.

NW 1/4 R-3669



CERTIFICATION	
I hereby certify that the information contained herein is true and complete to the best of my knowledge and belief.	
Name	<i>J. A. Rush</i>
Position	Environmental Coordinator
Company	Tenneco Oil Company
Date	March 27, 1979
I hereby certify that the well location shown on this plat was plotted from field notes of actual surveys made by me or under my supervision, and that the same is true and correct to the best of my knowledge and belief.	
Date Surveyed	November 1, 1978
Registered Professional Engineer and Surveyor	<i>Fred B. [Signature]</i>
Certificate No.	3950



All valves 2"

All BCPs, flanges, spools, valves, & lines must be series 900 or 3000 psi working press.

Choke manifold must be at ground level and extended out from under substructure.

TENNECO OIL COMPANY

REQUIRED MINIMUM BLOWOUT PREVENTOR

HOOKUP

Denver, Colorado

1. Existing Roads

- A. **Proposed Well Site Location:**
The proposed well site location was surveyed and staked by a registered land surveyor and is located 545' FSL, 1230' FWL, Section 7, T30N, R8W, San Juan County, New Mexico.
(See Exhibit I, Surveyor's Plat).
- B. **Planned Access Route:** The planned access route begins in Blanco, NM and goes north approx. 2 miles to a fork, take the right fork, proceed 1 mi. turning north on this road for approx. 5/10 mile. Again take the right fork for 1 mi. continue on main road in east/north/northeast direction for approx. 8 miles to junction of a dirt road
- C. **Access Road Labelled:** /turn south, go 1/2 mile take the right fork, /proceed southeasterly for 1 mile to new access road.
Color Code: Red - Improved Surface
 Blue - New Access Road
- D. Not applicable - the proposed well is a development well.
- E. The proposed well is a development well. See Exhibit II for existing roads within a one mile radius.
- F. **Existing Road Maintenance or Improvement Plan:**
The existing roads will require minimal maintenance.

2. Planned Access Roads

(All roads are existing roads.)

- A. **Width:**
The average width of the road is twenty feet.
- B. **Maximum Grades:**
Most of the grades will be six percent, however, certain areas of the road must cover heavy rock formations and approx. 12% grade will be required in some parts.
- C. **Turnouts:**
There are no turnouts planned as sight distance is sufficient.
- D. **Drainage Design:**
The road is center crowned to allow drainage. The road is flat primarily.
- E. **Culverts Use Major Cuts and Fills:**
No culverts will be required, however, due to heavy rock formation, some major cuts and fills will be needed.
- F. **Surfacing Material:**
Native soil has been wetted, bladed and compacted to make the road surface, which is existing.

2. Planned Access Roads (Cont'd)

- G. Gates, Cattleguards, Fence Cuts:
No gates, cattleguards or fences will be needed.
- H. New Roads Centerlined Flagged:
Existing Roads.

3. Location of Existing Wells

The proposed well is a development well. Exhibit^{III} shows existing wells within a one mile radius.

- A. Water Wells: None.
- B. Abandoned Wells: None.
- C. Temporarily Abandoned Wells: None.
- D. Disposal Wells: None.
- E. Drilling Wells: See Exhibit III.
- F. Producing Wells: See Exhibit III.
- G. Shut-In Wells: None.
- H. Injection Wells: None.
- I. Monitoring or Observation Wells: None.

4. Location of Existing and/or Proposed Facilities

- A. Existing facilities within one mile owned or controlled by Lessee/Operator:

- (1) Tank batteries - n/a
- (2) Production facilities - See Exhibit III.
- (3) Oil Gathering Lines - n/a
- (4) Gas Gathering Lines - n/a
- (5) Injection Lines - n/a
- (6) Disposal Lines - n/a

- B. New facilities in the event of production:

- (1) New facilities will be within the dimensions of the drill pad.
- (2) Dimensions are shown on Exhibit IV.
- (3) Construction Materials/Methods:
Construction materials will be native to the site.
Facilities will consist of a well pad.
- (4) Protection of Wildlife/Livestock:
Facilities will be fenced as needed.

4. Location of Existing and/or Proposed Facilities (Cont'd)

B. New facilities in the event of production: (cont'd)

(5) New facilities will consist of a wellhead, tank and production unit.

C. Rehabilitation of Disturbed Areas:

Following the completion of construction, those areas required for continued production will be graded to provide drainage and minimize erosion. Those areas unnecessary for use will be graded to blend with surrounding topography per BLM recommendations.

5. Location and Type of Water Supply

A. Location and type of water supply:

Water will be hauled from a private source.

B. Water Transportation System:

Water trucks will be used.

C. Water wells:

N/A.

6. Source of Construction Materials

A. Materials:

Construction materials will consist of soil native to the site. Any topsoil, if present, will be stripped and stockpiled as needed.

B. Land Ownership;

The planned site and access road is on federal land administered by the Bureau of Land Management.

C. Materials Foreign to the Site:

N/A.

D. Access Roads:

No additional roads will be required.

7. Methods for Handling Waste Disposal

A. Cuttings:

Cuttings will be contained in the reserve pit.

B. Drilling Fluids:

Drilling fluids will be retained in the reserve pit.

C. Produced Fluids:

Produced fluids, including produced water will be collected in the reserve pit. Any small amount of hydrocarbon that may be produced during testing will be retained in the reserve pit. Prior to clean up operations, the hydrocarbon material will be skimmed.

7. Methods for Handling Waste Disposal (Cont'd)

- D. Sewage:
Sanitary facilities for sewage disposal will consist of at least one pit toilet, during the driller operations. The pit will be backfilled immediately following completion of the drilling operation.
- E. Garbage:
There probably will not be much putrescible garbage to dispose of. However, it will be disposed of along with the refuse in a constructed burn pit, which will be fenced. The small amount of refuse will be burned and the pit will be covered with a minimum 36 inch cover upon completion.
- F. Clean-Up of Well Site:
Upon the release of the drilling rig, the surface of the drilling pad will be prepared to accommodate a completion rig, if testing indicates potential productive zones. In either case, the "mouse hole" and "rat hole" will be covered to eliminate a potential hazard to livestock. The reserve pit will be fenced to prevent entry of livestock until the pit is backfilled. Reasonable clean up will be performed prior to final restoration of the site.

8. Ancillary Facilities

None required.

9. Well Site Layout

- A. See Exhibit IV.
- B. Location of pits, etc. See Exhibit IV.
- C. Rig orientation etc. See Exhibit IV.
- D. Lining of pits:
Pits will not be lined. They will be covered with a fine mesh netting, if necessary, for the protection of wildlife if fluids are found to be toxic.

10. Plans for Restoration of Surface

- A. Reserve pit clean up:
The pit will be fenced prior to rig release and shall be maintained until clean up. Prior to backfilling any hydrocarbon material on the pit surface will be removed. The fluids and solids contained in the pit shall be backfilled with soil excavated from the site and with soil adjacent to the reserve pit. The restored surface of the reserve pit will be contoured as needed to minimize erosion. The reserve pit area will be seeded per BLM recommendations during the appropriate season following final restoration of the site.

10. Plans for Restoration of Surface (Cont'd)

- B. Restoration Plans - Production Developed:
The reserve pit will be backfilled and restored as described under Item A. In addition, those disturbed areas not required for production will be graded to blend with the surrounding topography, and seeded, per BLM recommendations. The portion of the drill pad required for production and turning areas will be graded to minimize erosion and provide access to production facilities under inclement conditions. Following depletion and abandonment of the site, restoration procedures will be those under Item C. below.
- C. Restoration Plan - No Production Developed:
The reserve pit will be restored as described above. With no production developed, the entire surface disturbed by construction of the drilling pad will be restored. The site will be contoured to blend with the surrounding topography. The site will be seeded according to BLM recommendations. If the new access road is not required for other development plans, it will be obliterated and restored and seeded per BLM recommendations.
- D. Rehabilitation Time Table:
Upon completion of operations the initial clean up of the well site will be performed. Final restoration of the site will be performed as soon as possible according to procedural guidelines published by the USGS and BLM. Seeding of the disturbed areas which are no longer required will be performed during the appropriate season, following final restoration.

11. Other Information

- A. Surface Description:
The location for the proposed well site sits on a rocky point. There are numerous heavy rock formations throughout the area along with cedar trees.
- B. Surface Use Activities:
The surface is federally owned and managed by the BLM. The predominant surface use is mineral exploration and production.
- C. Proximity of Water, Dwellings and Historical Sites:
1. Water:
There are no reservoirs or streams in the immediate area.
 2. Occupied Dwellings:
There are no occupied dwellings or buildings in the area.
 3. Sites:
An archeological reconnaissance has been performed for this location and clearance has been granted.

12. Operator's Field Representative

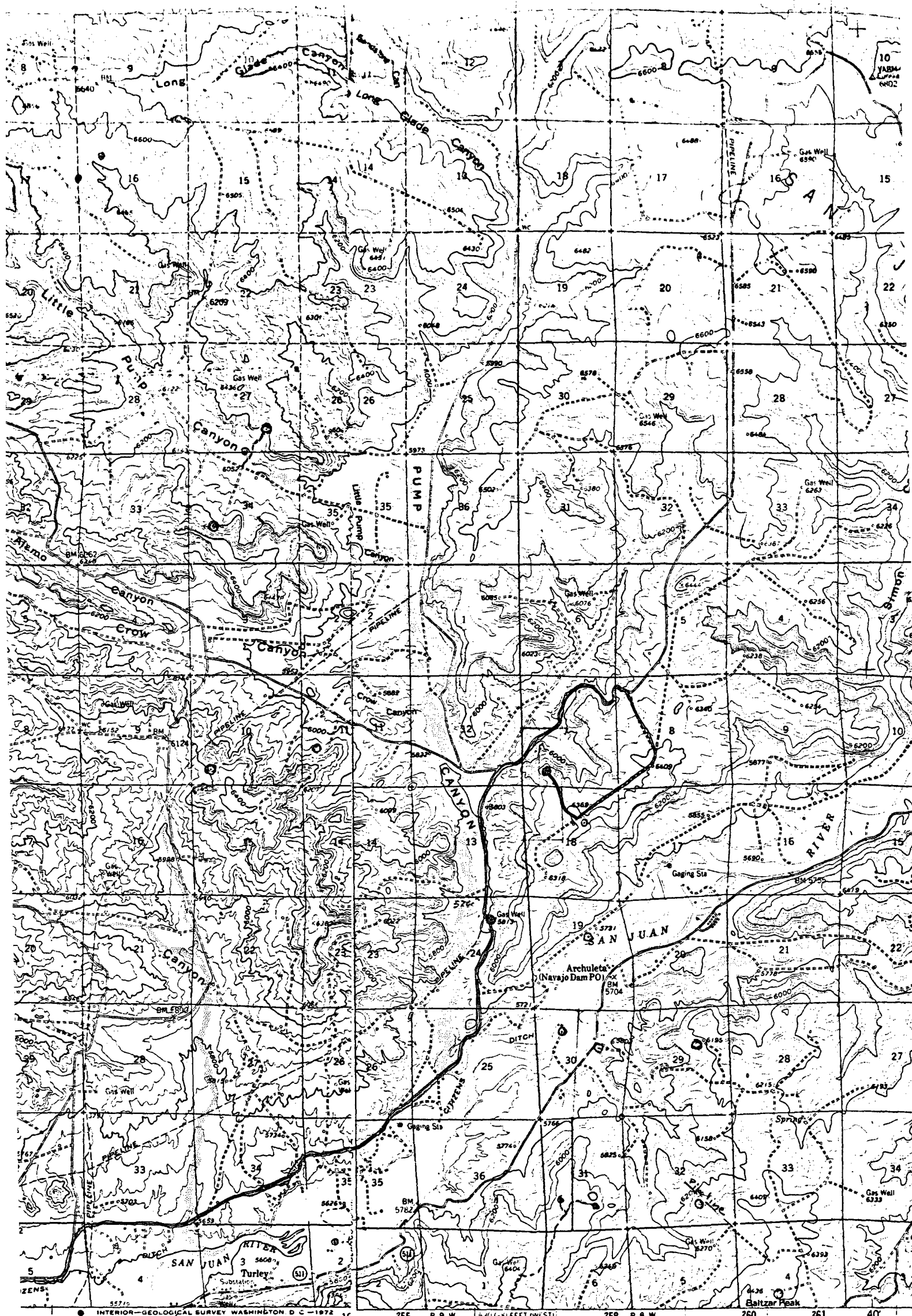
Donald S. Barnes
Division Drilling Engineer
Tenneco Oil Company
720 South Colorado Blvd.
Penthouse
Denver, CO 80222
(303) 758-7130 Ext. 212

13. Certification

I hereby certify that I, or persons under my direct supervision, have inspected the proposed drill site and access route; that I am familiar with the conditions as they actually exist; that the statements made in this plan are, to the best of my knowledge, true and correct; and that the proposed work performed by Tenneco Oil Company and its contractors and subcontractors will conform to this plan.

Date: 3-29-79


D. D. Myers
Division Production Manager



INTERIOR-GEOLOGICAL SURVEY WASHINGTON D.C. - 1972
1:4 MI. TO N. MEX. 17
BLANCO 4.2 MI.
253000m.E
167°45' 255 R. 9 W. 5910 FEET (WEST) 258 R. 8 W. 260 261 40'

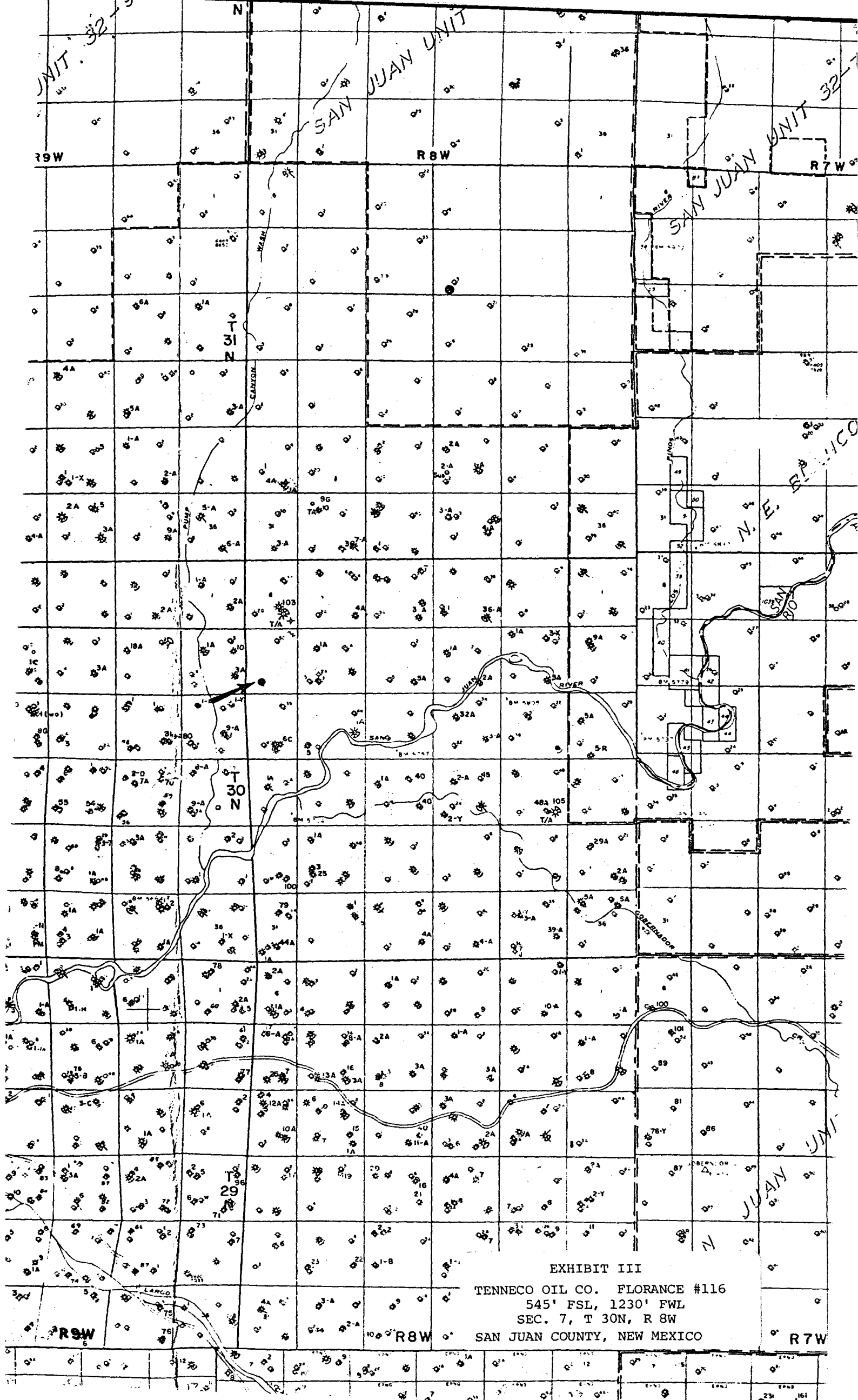
ROAD CLASSIFICATION
Medium-duty ——— Light-duty ———
Unimproved dirt
U.S. Route ○ State Route

Mapped, edited, and published by the Geological Survey
Control by USGS and US
East half compiled in 1954 West half compiled in 1959
methods from aerial phot
Field checked 1959
Polyconic projection 192
10 000 foot grid based on
west and central zones
1000 meter Universal Transverse Mercator grid ticks,
zone 13 shown in blue
Blue hatching indicates area to be submerged by Navajo
Dam project.

Vicinity Map for EXHIBIT II
TENNECO OIL CO. #116 FLORANCE
545' FSL 1230' FWL Sec 7-T30N-R8W
SAN JUAN COUNTY, NEW MEXICO

UTM GRID AND 1959 MAGNETIC NORTH
DECLINATION AT CENTER OF SHEET

1
3000
FOR SALE



TENNECO OIL COMPANY

CALCULATION SHEET

COMPANY

EXHIBIT IV

SUBJECT DRILLING WELL SITE LAYOUT FLORANCE #116

LOCATION SE/SW SEC. 7, T 30N, R 8W, SAN JUAN COUNTY, NEW MEXICO

DATE 3-79

