

All distances must be from the outer boundaries of the Section.

Operator <b>UNION TEXAS PETROLEUM CORPORATION</b>		Lease <b>CROW</b>		Well No. <b>1</b>
Oil Letter <b>A</b>	Section <b>33</b>	Township <b>24 NORTH</b>	Range <b>7 WEST</b>	County <b>RIO ARriba</b>

Actual Footage Location of Well:

<b>.942</b> feet from the <b>NORTH</b> line and <b>491</b> feet from the <b>EAST</b> line	Producing Formation <b>Gallup Dakota</b>	Pool <b>Escrito</b>	Dedicated Acreage <b>N1/2NE1/4 80.00</b>	Gallup: <b>40.00</b> Acres
Sound Level Elev. <b>6993</b>	Dakota: <b>NENE 40.00</b> Acres			

1. Outline the acreage dedicated to the subject well by colored pencil or hachure marks on the plat below.
2. If more than one lease is dedicated to the well, outline each and identify the ownership thereof (both as to working interest and royalty).
3. If more than one lease of different ownership is dedicated to the well, have the interests of all owners been consolidated by communitization, unitization, force-pooling, etc?

☐ Yes ☐ No If answer is "yes," type of consolidation \_\_\_\_\_

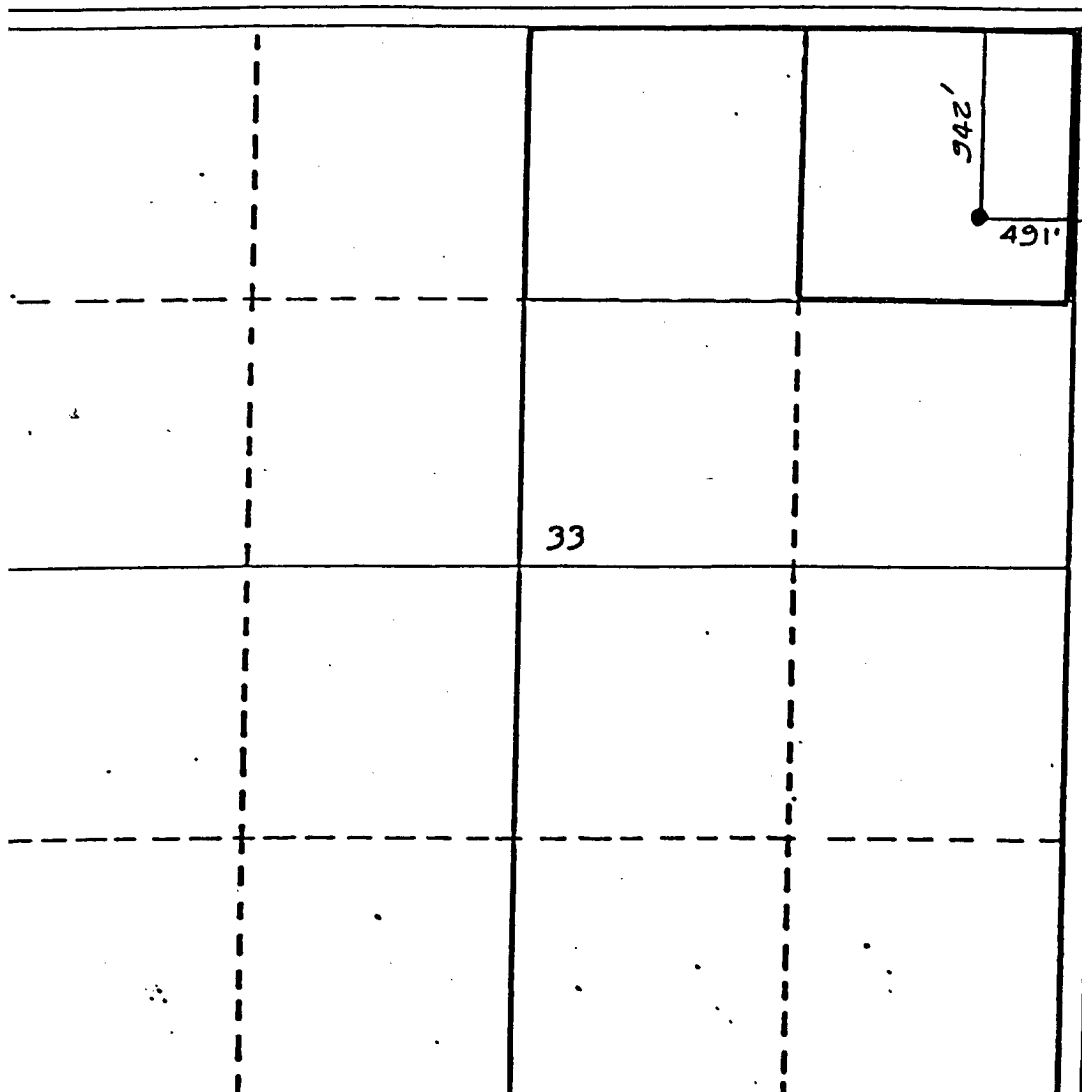
If answer is "no," list the owners and tract descriptions which have actually been consolidated. (Use reverse side of this form if necessary.) \_\_\_\_\_

No allowable will be assigned to the well until all interests have been consolidated (by communitization, unitization, forced-pooling, or otherwise) or until a non-standard unit, eliminating such interests, has been approved by the Division

**RECEIVED**

NOV 29 1983

OIL CON. DIV.



**CERTIFICATION**

I hereby certify that the information contained herein is true and complete to the best of my knowledge and belief.

*Rudy D. Motto*

Name  
**Rudy D. Motto**

Position  
**Area Operations Manager**

Company  
**Union Texas Petroleum Corp.**

Date  
**November 1, 1983**

I hereby certify that the well location shown on this plat is plotted from field notes of surveys made by me or under my supervision, and that the same are true and correct to the best of my knowledge and belief.

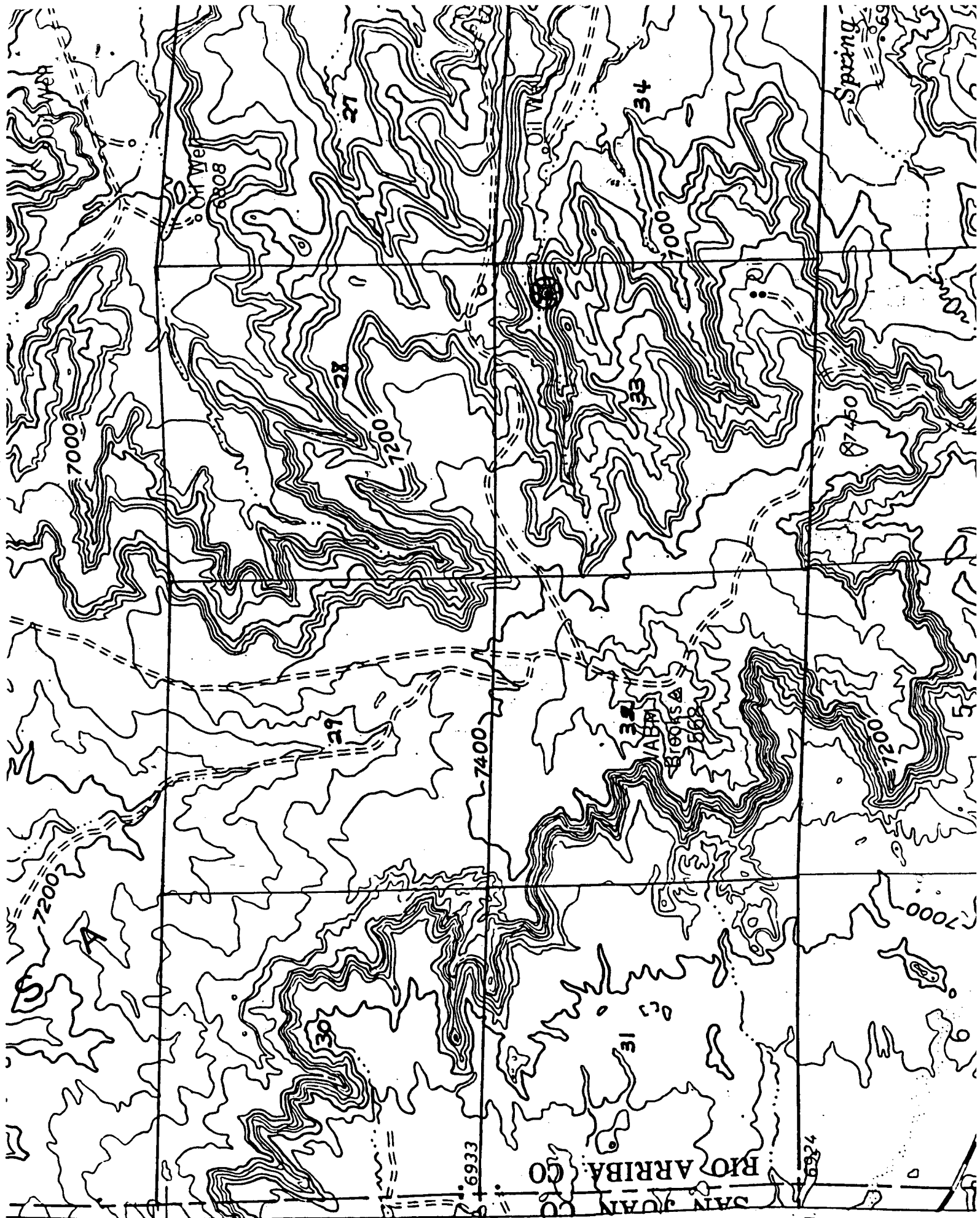
*Michael Daly*

Date Surveyed  
**August 2, 1983**

Registered Professional Engineer and/or Land Surveyor

**Michael Daly**

Certificate No.  
**5002**



- Crow No 1 - Nageezi Q - NE1NE1  
 Section 33, T24N-R7W San Juan Co., NM

T.24 N.  
 T.23 N.

CROW NO. 1

942 Feet from the North Line and 491 Feet from the East Line of Section 33,  
Township 24 North, Range 7 West, N. M. P. M., Rio Arriba County, New Mexico

