

UNITED STATES
DEPARTMENT OF THE INTERIOR
BUREAU OF LAND MANAGEMENT

APPLICATION FOR PERMIT TO DRILL, DEEPEN, OR PLUG BACK

1a. Type of Work DRILL	2005 FEB 14 AM 9 14 RECEIVED 070 FARMINGTON NM	5. Lease Number NMSF-078423 Unit Reporting Number	
1b. Type of Well GAS		6. If Indian, All. or Tribe	
2. Operator BURLINGTON RESOURCES OIL & GAS COMPANY LP		7. Unit Agreement Name San Juan 29-7 Unit	
3. Address & Phone No. of Operator PO Box 4289, Farmington, NM 87499 (505) 326-9700		8. Farm or Lease Name San Juan 29-7 Unit 9. Well Number 521S	
4. Location of Well 1430' FNL, 1700' FWL Latitude 36° 43.7406, Longitude 107° 31.4939		10. Field, Pool, Wildcat Basin Fruitland Coal 11. Sec., Twn, Rge, Mer. (NMPM) F Sec. 13, T-29-N, R-7-W API # 30-039-29457	
14. Distance in Miles from Nearest Town 23 miles from Blanco		12. County Rio Arriba ✓	13. State NM
15. Distance from Proposed Location to Nearest Property or Lease Line 1430'			
16. Acres in Lease		17. Acres Assigned to Well W 320 W/2	
18. Distance from Proposed Location to Nearest Well, Drig, Compl, or Applied for on this Lease 52'			
19. Proposed Depth 3178'		20. Rotary or Cable Tools Rotary	
21. Elevations (DF, FT, GR, Etc.) 6248' GR		22. Approx. Date Work will Start	
23. Proposed Casing and Cementing Program See Operations Plan attached			
24. Authorized by: <u>Nancy Oltmanns</u> Senior Staff Specialist		<u>2-16-05</u> Date	

PERMIT NO.

APPROVAL DATE

APPROVED BY

TITLE

DATE

Archaeological Report attached

Threatened and Endangered Species Report attached

NOTE: This format is issued in lieu of U.S. BLM Form 3160-3

Title 18 U.S.C. Section 1001, makes it a crime for any person knowingly and willfully to make to any department or agency of the United States any false, fictitious or fraudulent statements or presentations as to any matter within its jurisdiction.

This action is subject to technical and procedural review pursuant to 43 CFR 3165.3 and appeal pursuant to 43 CFR 3165.4

NMOCD

DRILLING OPERATIONS AUTHORIZED ARE SUBJECT TO COMPLIANCE WITH ATTACHED "GENERAL REQUIREMENTS".

DISTRICT I
1825 N. French Dr., Hobbs, N.M. 88240

State of New Mexico
Energy, Minerals & Natural Resources Department

Form C-102
Revised August 15, 2000

DISTRICT II
811 South First, Artesia, N.M. 88210

Submit to Appropriate District Office
State Lease - 4 Copies
Fee Lease - 3 Copies

DISTRICT III
1000 Rio Brazos Rd., Aztec, N.M. 87410

OIL CONSERVATION DIVISION
2040 South Pacheco
Santa Fe, NM 87505

DISTRICT IV
2040 South Pacheco, Santa Fe, NM 87505

2005 FEB 14 AM 9 11 AMENDED REPORT

WELL LOCATION AND ACREAGE DEDICATION PLAT

¹ API Number 30-039-29457	² Pool Code 71629	³ Foot Name Basin Fruitland Oco	⁴ Foot Name FARMINGTON NM
⁵ Property Code 7465	⁶ Property Name SAN JUAN 29-7 UNIT		⁷ Well Number 521S
⁸ OGED No. 14538	⁹ Operator Name BURLINGTON RESOURCES OIL AND GAS COMPANY LP		¹⁰ Elevation 6248'

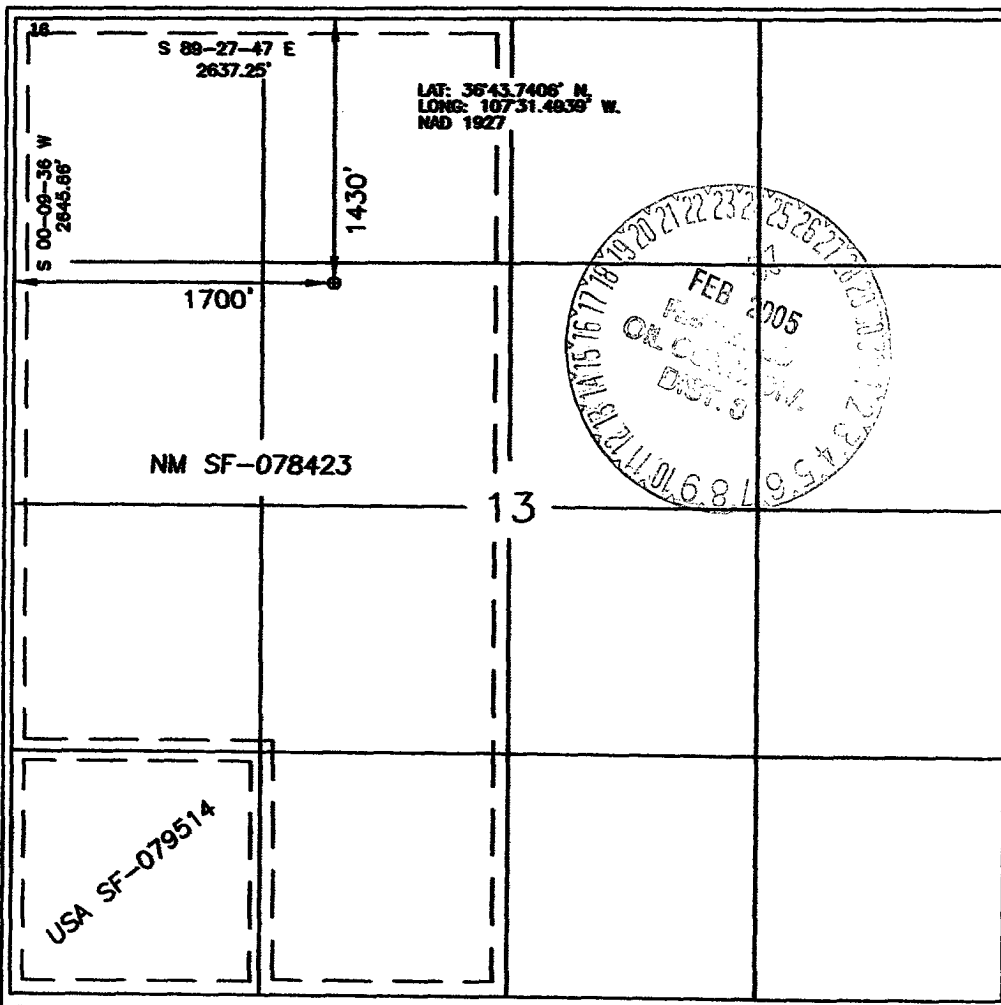
¹⁰ Surface Location

UL or lot no.	Section	Township	Range	Lot Ida	Feet from the	North/South line	Feet from the	East/West line	County
F	13	29-N	7-W		1430'	NORTH	1700'	WEST	RIO ARriba

¹¹ Bottom Hole Location if Different From Surface

UL or lot no.	Section	Township	Range	Lot Ida	Feet from the	North/South line	Feet from the	East/West line	County
F									
¹² Dedicated Acres FC - 320 W/2			¹³ Joint or Infill		¹⁴ Consolidation Code		¹⁵ Order No.		

NO ALLOWABLE WILL BE ASSIGNED TO THIS COMPLETION UNTIL ALL INTERESTS HAVE BEEN CONSOLIDATED OR A NON-STANDARD UNIT HAS BEEN APPROVED BY THE DIVISION



17 OPERATOR CERTIFICATION

I hereby certify that the information contained herein is true and complete to the best of my knowledge and belief.

Patsy Clugston
Signature
Patsy Clugston
Printed Name
Sr. Regulatory Specialist
Title
12-10-04
Date

18 SURVEYOR CERTIFICATION

I hereby certify that the well location shown on this plat was plotted from field notes of actual surveys made by me or under my supervision, and that the same is true and correct to the best of my belief.

Date of Survey 12-2-04
Signature and Seal of Professional Surveyor:
Glen Russell
Certificate Number 15703

District I

Energy, Minerals and Natural Resources

May 27, 2004

1625 N. French Dr., Hobbs, NM 88240

District II 1301 W. Grand Ave., Artesia, NM 88210

OIL CONSERVATION DIVISION

1220 South St. Francis Dr. Santa Fe, NM 87505

District III 1000 Rio Brazos Rd., Aztec, NM 87410

District IV 1220 S. St. Francis Dr., Santa Fe, NM 87505

WELL API NO. 30-039-
5. Indicate Type of Lease STATE [] FEE []
6. State Oil & Gas Lease No. Federal Lease NMSF-078423
7. Lease Name or Unit Agreement Name San Juan 29-7 Unit
8. Well Number 521S
9. OGRID Number 14538
10. Pool name or Wildcat Basin Fruitland Coal
11. Elevation (Show whether DR, RKB, RT, GR, etc.)
Pit or Below-grade Tank Application [] or Closure []
Pit type New Drill Depth to Groundwater >100' Distance from nearest fresh water well <1000' Distance from nearest surface water <1000'
Pit Liner Thickness: 12 mil Below-Grade Tank: Volume bbls; Construction Material

SUNDRY NOTICES AND REPORTS ON WELLS
(DO NOT USE THIS FORM FOR PROPOSALS TO DRILL OR TO DEEPEN OR PLUG BACK TO A DIFFERENT RESERVOIR. USE "APPLICATION FOR PERMIT" (FORM C-101) FOR SUCH PROPOSALS.)
1. Type of Well: Oil Well [] Gas Well [X] Other
2. Name of Operator BURLINGTON RESOURCES OIL & GAS COMPANY LP
3. Address of Operator 3401 E. 30TH STREET, FARMINGTON, NM 87402
4. Well Location Unit Letter F : 1430' feet from the North line and 1700' feet from the West line
Section 13 Township 29N Range 7W NMPM County Rio Arriba

12. Check Appropriate Box to Indicate Nature of Notice, Report or Other Data

NOTICE OF INTENTION TO:
PERFORM REMEDIAL WORK [] PLUG AND ABANDON []
TEMPORARILY ABANDON [] CHANGE PLANS []
PULL OR ALTER CASING [] MULTIPLE COMPL []
OTHER: New Drill [X]
SUBSEQUENT REPORT OF:
REMEDIAL WORK [] ALTERING CASING []
COMMENCE DRILLING OPNS. [] P AND A []
CASING/CEMENT JOB []
OTHER: []

13. Describe proposed or completed operations. (Clearly state all pertinent details, and give pertinent dates, including estimated date of starting any proposed work). SEE RULE 1103. For Multiple Completions: Attach wellbore diagram of proposed completion or recompletion.

Burlington Resources proposes to construct a new drilling pit and an associated vent/flare pit. Based on Burlington's interpretation of the Ecosphere's risk ranking criteria, the new drilling pit will be a lined pit as detailed in Burlington's Revised Drilling / Workover Pit Construction / Operation Procedures dated November 11, 2004 on file at the NMOCD office. A portion of the vent/flare pit will be designed to manage fluids and that portion will be lined as per the risk ranking criteria. Burlington Resources anticipates closing these pits according to the Drilling / Workover Pit Closure Procedure dated August 2, 2004 on file at the NMOCD office.

I hereby certify that the information above is true and complete to the best of my knowledge and belief. I further certify that any pit or below-grade tank has been/will be constructed or closed according to NMOCD guidelines [], a general permit [X] or an (attached) alternative OCD-approved plan [].

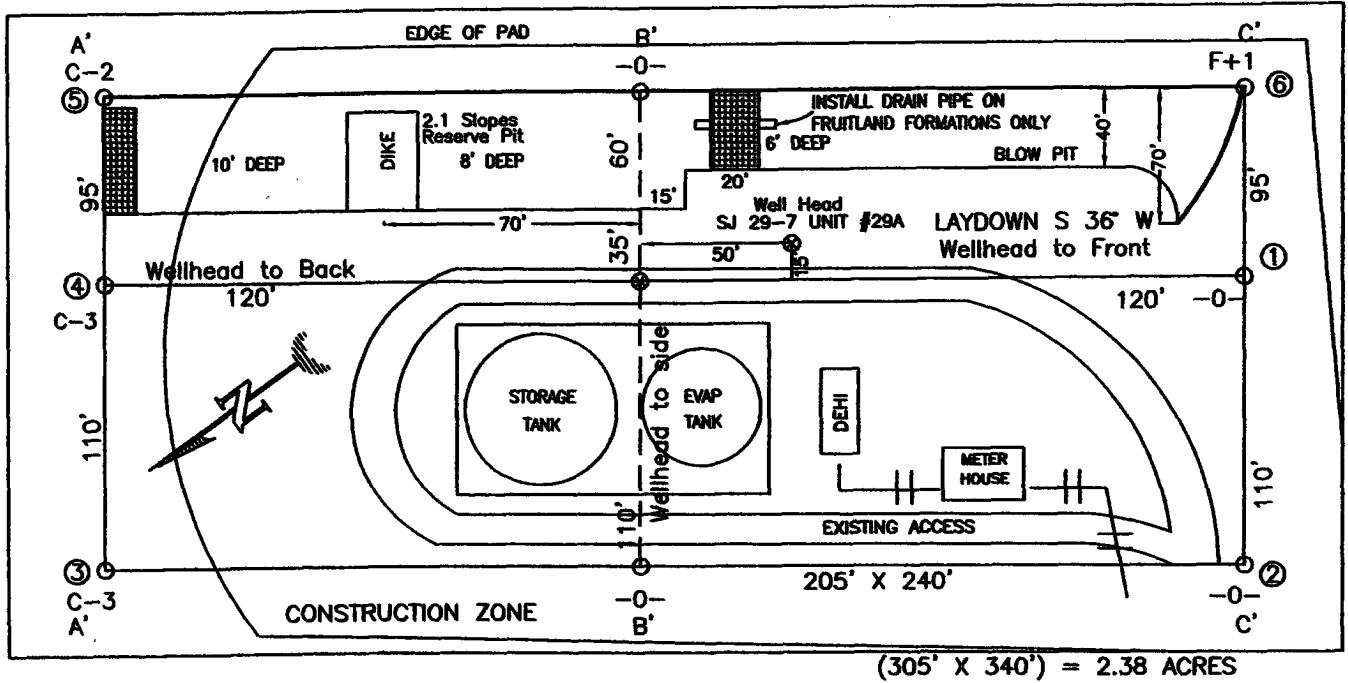
SIGNATURE Nancy Oltmanns TITLE Senior Staff Regulatory Specialist DATE 1/18/2004

Type or print name Nancy Oltmanns E-mail address: noltmanns@br-inc.com Telephone No. 505-326-9891

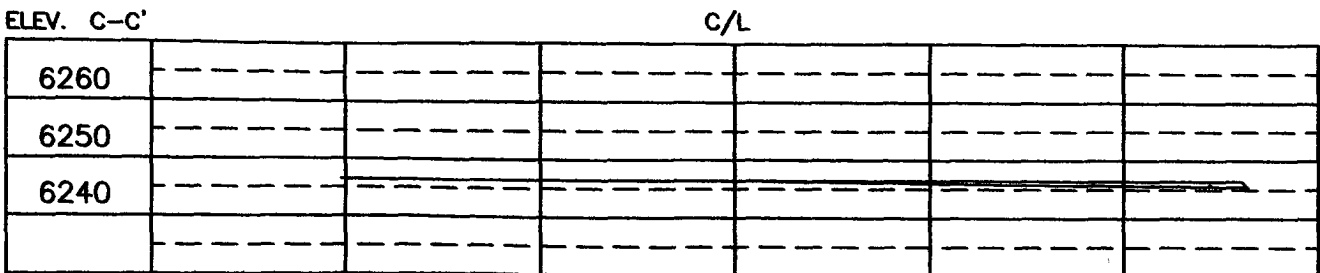
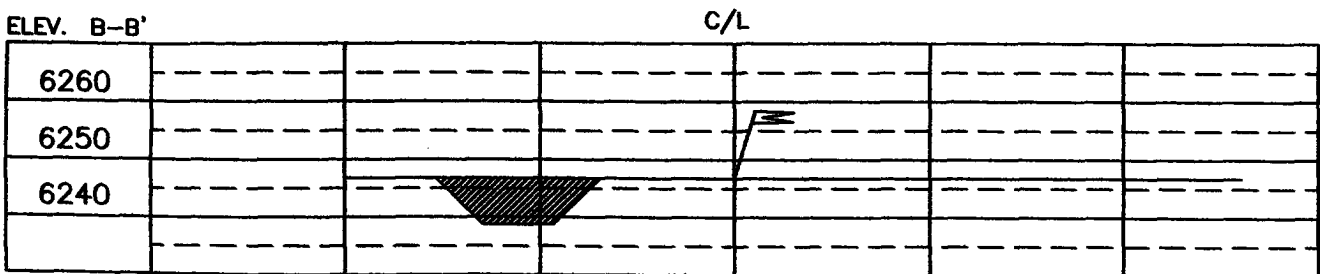
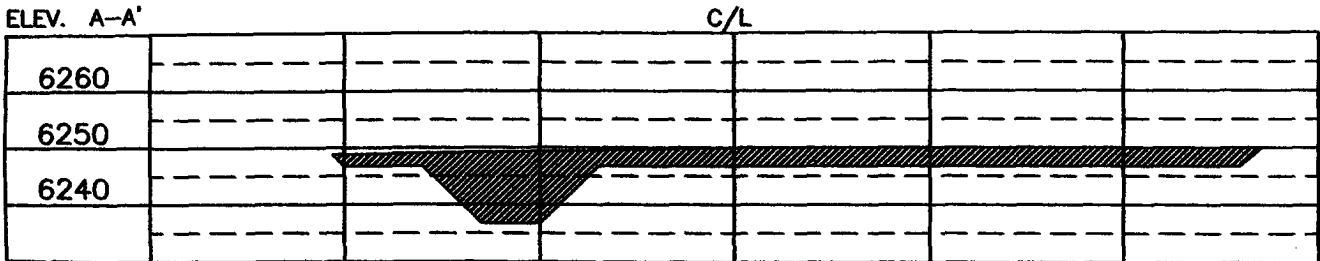
APPROVED BY [Signature] TITLE DEPUTY OIL & GAS INSPECTOR, DIST. DATE FEB 25 2005

Conditions of Approval (if any):

BURLINGTON RESOURCES OIL & GAS COMPANY LP
SAN JUAN 29-7 UNIT #521S, 1430' FNL & 1700' FWL
SECTION 13, T-29-N, R-7-W, NMPM, RIO ARRIBA COUNTY, NM
GROUND ELEVATION: 6248', DATE: NOVEMBER 19, 2004



RESERVE PIT DIKE: TO BE 8' ABOVE DEEP SIDE (OVERFLOW - 3' WIDE AND 1' ABOVE SHALLOW SIDE).
 BLOW PIT: OVERFLOW PIPE HALFWAY BETWEEN TOP AND BOTTOM AND TO EXTEND OVER PLASTIC LINER AND INTO BLOW PIT.



NOTE: VECTOR SURVEYS IS NOT LIABLE FOR UNDERGROUND UTILITIES OR PIPELINES.
 CONTRACTOR SHOULD CALL ONE-CALL FOR LOCATION OF ANY MARKED OR UNMARKED BURIED PIPELINES OR CABLES
 ON WELL PAD AND OR ACCESS ROAD AT LEAST TWO (2) WORKING DAYS PRIOR TO CONSTRUCTION.

OPERATIONS PLAN

Well Name: San Juan 29-7 Unit #521S
Location: 1430' FNL, 1700' FWL, Section 13, T-29-N, R-7-W
Latitude 36° 43.7406, Longitude 107° 31.4939
Rio Arriba County, NM
Formation: Basin Fruitland Coal
Elevation: 6248' GR

Formation:	Top	Bottom	Contents
Surface	San Jose	2152'	
Ojo Alamo	2152'	2327'	aquifer
Kirtland	2327'	2897'	gas
Fruitland	2897'		gas
Intermediate casing	2867'		
Top of Coal	2897'		
Base of Coal	3093'		
Pictured Cliffs	3093'		
Total Depth	3178'		

Logging Program:
Open hole - none
Mud log - 7" casing to 3178'
Coring Program: none

Mud Program:

<u>Interval</u>	<u>Type</u>	<u>Weight</u>	<u>Vis.</u>	<u>Fluid Loss</u>
0-120'	Spud/Air/Air Mist	8.4-9.0	40-50	no control
120-2867'	Non-dispersed	8.4-9.0	30-60	no control
2867-3178'	Air/Mist			no control

Casing Program (as listed, the equivalent, or better):

<u>Hole Size</u>	<u>Depth Interval</u>	<u>Csg.Size</u>	<u>Wt.</u>	<u>Grade</u>
12 1/4"	0' - 120'	9 5/8"	32.3#	H-40
8 3/4"	0' - 2867'	7"	20.0#	J-55
6 1/4"	2867' - 3178'	open hole		

Alternate Casing Program (as listed, the equivalent, or better):

<u>Hole Size</u>	<u>Depth Interval</u>	<u>Csg.Size</u>	<u>Wt.</u>	<u>Grade</u>
12 1/4"	0' - 120'	9 5/8"	32.3#	H-40
8 3/4"	0' - 2867'	7"	20.0#	J-55
6 1/4"	2817' - 3178'	5 1/2"	15.5#	J-55

Tubing Program:
0' - 3178' 2 3/8" 4.7# J-55

Float Equipment: 9 5/8" surface casing - guide shoe. Centralizers will be run in accordance with Onshore Order #2.

7" intermediate casing - guide shoe and float collar. Standard centralizers run every other joint above shoe. Two turbolizing type centralizers - one below and one into the base of the Ojo Alamo @ 2545'. Standard centralizers thereafter every fourth joint up to the base of the surface pipe.

Wellhead Equipment: 9 5/8" x 7" x 2 3/8" x 11" 2000 psi xmas tree assembly.

Cementing:

9 5/8" surface casing -

Pre-Set Drilled Cement with 22 sx Type I, II cement with 20% flyash mixed at 14.5 ppg, 1.61 cu ft per sack yield. (36 cu ft of slurry, bring cement to surface) Wait on cement for 24 hours for pre-set holes before pressure testing or drilling out from under surface.

Conventionally Drilled:

Cement with 103 sx Type III cement with 0.25 pps Celloflake, 3% calcium chloride (131 cu ft of slurry, 200% excess, bring cement to surface) Wait on cement for 8 hrs for conventionally set holes before pressure testing or drilling out from under surface.

Wait on cement until cement establishes 250 psi at 60 degrees compressive strength prior to nipple up of BOP.

7" intermediate casing - lead w/250 sacks Premium Lite cement with 3% calcium chloride, 0.25 pps Celloflake, 5 pps LCM-1, 0.4% fluid loss, 0.4% sodium metasilicate. Tail with 90 sacks Type III cement with 1% calcium chloride, 0.25 pps Celloflake, 0.2% fluid loss (657 cu.ft., 50% excess to circulate to surface).

5 1/2" liner - will not be cemented if run.

Note: If open hole logs are run, cement volumes will be based on 25% excess over caliper volumes.

BOP and tests:

Surface to intermediate TD - 11" 2000 psi (minimum) double gate BOP stack (Reference Figure #1). Prior to drilling out surface casing, test BOPE to 600 psi for 30 min.

Intermediate TD to Total Depth - 7 1/6" 2000 psi (minimum) completion BOP stack (Reference Figure #2) Prior to drilling out intermediate casing, test BOPE and casing to 1500 psi for 30 minutes.

From surface to 7" TD - a choke manifold will be installed in accordance with Onshore Order No. 2 (Reference Figure #3). When the cavitation completion rig drills the production hole, the completion rig configuration will be used (Reference Figure #4). ~~No choke manifolds will be used on cavitation rig operations.~~

Pipe rams will be actuated at least once each day and blind rams actuated once each trip to test proper functioning. An upper kelly cock valve with handle and drill string safety valves to fit each drill string will be maintained and available on the rig floor.

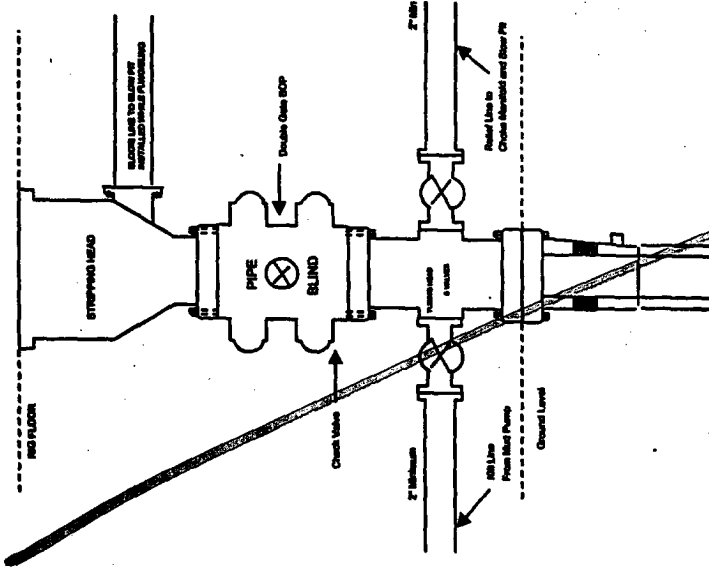
Additional information:

- The Fruitland Coal formation will be completed.
- Anticipated pore pressure for the Fruitland is less than 500 psi.
- This gas is dedicated.
- The west half of Section 18 is dedicated to this well.

Drilling Engineer: Robert B. Valler

Date: 1-17-05

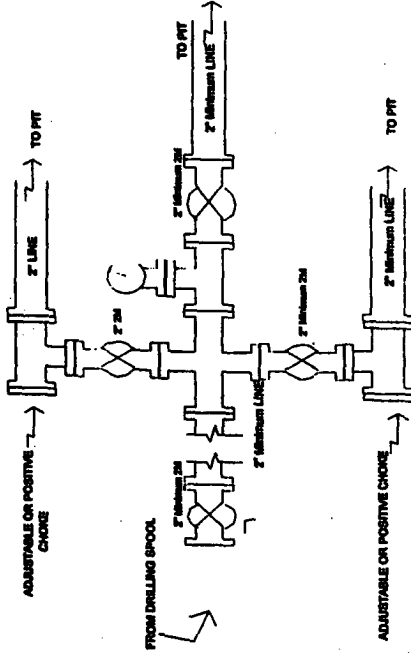
Completion/Workover Rig
BOP Configuration
2,000 psi System



Minimum BOP installation for all Completion/Workover Operations. 7-1/16" bore, 2000 psi minimum working pressure double gate BOP to be equipped with blind and pipe rams. A stripping head to be installed on the top of the BOP. All BOP equipment is 2000 psi working pressure or greater excluding 500 psi stripping head.

Figure #2

Drilling Rig
Choke Manifold Configuration
2000 psi System

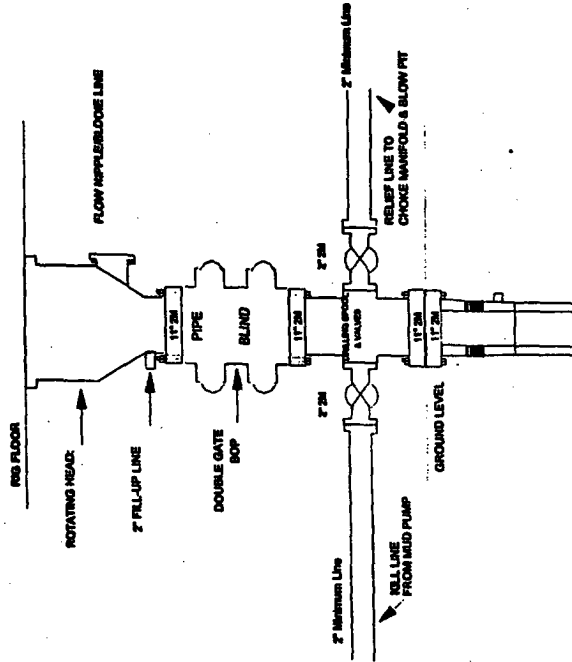


Choke manifold installation from Surface Casing Point to Total Depth. 2,000psi working pressure equipment with two chokes.

Figure #3

4-20-01

Drilling Rig
2000 psi System



BOP Installation from Surface Casing Point to Total Depth. 1 1/2" Bore 10' Nominal, 2000 psi working pressure double gate BOP to be equipped with blind and pipe rams and pipe ram. All equipment on top of ram preventers. All BOP equipment is 2,000 psi working pressure.

4-20-01

Figure #1

BURLINGTON RESOURCES

Figure #4
Cavitation Rig
BOP Configuration
2,000 psi Minimum System

