

UNITED STATES
DEPARTMENT OF THE INTERIOR
BUREAU OF LAND MANAGEMENT

APPLICATION FOR PERMIT TO DRILL, DEEPEN, OR PLUG BACK

1a. Type of Work DRILL	5. Lease Number NMNM-081239 Unit Reporting Number	
1b. Type of Well GAS	6. If Indian, All. or Tribe	
2. Operator BURLINGTON RESOURCES Oil & Gas Company	7. Unit Agreement Name	
3. Address & Phone No. of Operator PO Box 4289, Farmington, NM 87499 (505) 326-9700	8. Farm or Lease Name	
4. Location of Well Unit K (NESW), 1910' FSL & 1460' FWL, Latitude 36° 49.5135'N Longitude 108° 05.3579' W	9. Well Number Blanco 30-12 #100	
10. Field, Pool, Wildcat Basin Fruitland Coal	11. Sec., Twn, Rge, Mer. (NMPM) K Sec. 10, T30N, R12W API # 30-045-32849	
14. Distance in Miles from Nearest Town Flora Vista Post Office - 1.6 miles	12. County San Juan ✓	13. State NM
15. Distance from Proposed Location to Nearest Property or Lease Line		
16. Acres in Lease	17. Acres Assigned to Well 320.74 acres S/2	
18. Distance from Proposed Location to Nearest Well, Drig, Compl, or Applied for on this Lease		
19. Proposed Depth 2198'	20. Rotary or Cable Tools Rotary	
21. Elevations (DF, FT, GR, Etc.) 5719' GL	22. Approx. Date Work will Start	
23. Proposed Casing and Cementing Program See Operations Plan attached		
24. Authorized by: <u>Patsy Clug</u> Regulatory/Compliance Specialist	Date <u>1/25/05</u>	

PERMIT NO. _____ APPROVAL DATE _____
APPROVED BY [Signature] TITLE AFM DATE 2-23-05

Archaeological Report attached

Threatened and Endangered Species Report attached

NOTE: This format is issued in lieu of U.S. BLM Form 3160-3

Title 18 U.S.C. Section 1001, makes it a crime for any person knowingly and willfully to make to any department or agency of the United States any false, fictitious or fraudulent statements or presentations as to any matter within its jurisdiction.

and appeal pursuant to 43 CFR §165.4

NMOCD

DRILLING OPERATIONS AUTHORIZED ARE
SUBJECT TO COMPLIANCE WITH ATTACHED
"GENERAL REQUIREMENTS".

DISTRICT I
P.O. Box 1980, Hobbs, N.M. 88241-1980

DISTRICT II
1301 W. Grand Avenue, Artesia, N.M. 88210

DISTRICT III
1000 Rio Brazos Rd., Aztec, N.M. 87410

DISTRICT IV
1220 South St. Francis Dr., Santa Fe, NM 87505

State of New Mexico
Energy, Minerals & Natural Resources Department

OIL CONSERVATION DIVISION

1220 South St. Francis Dr.
Santa Fe, NM 87504-2088

Form C-102

Revised June 10, 2003

Instructions on back

Submit to Appropriate District Office

State Lease - 4 Copies

Fee Lease - 3 Copies

☐ AMENDED REPORT

WELL LOCATION AND ACREAGE DEDICATION PLAT

¹ API Number 30-045-32849	² Pool Code 71629	³ Pool Name Basin Fruitland Coal
⁴ Property Code 6833	⁵ Property Name BLANCO 30-12	⁶ Well Number 100
⁷ GRID No. 14538	⁸ Operator Name BURLINGTON RESOURCES OIL & GAS COMPANY LP	⁹ Elevation 5719

¹⁰ Surface Location

UL or lot no.	Section	Township	Range	Lot Idn	Feet from the	North/South line	Feet from the	East/West line	County
K	10	30-N	12-W		1910	SOUTH	1460	WEST	SAN JUAN

¹¹ Bottom Hole Location If Different From Surface

UL or lot no.	Section	Township	Range	Lot Idn	Feet from the	North/South line	Feet from the	East/West line	County
K									
¹² Dedicated Acres 320.74 acres S/2		¹³ Joint or Infill		¹⁴ Consolidation Code		¹⁵ Order No.			

NO ALLOWABLE WILL BE ASSIGNED TO THIS COMPLETION UNTIL ALL INTERESTS HAVE BEEN CONSOLIDATED
OR A NON-STANDARD UNIT HAS BEEN APPROVED BY THE DIVISION

16

FD 3 1/4" BC BLM 1975	LOT 4	LOT 3	LOT 2	LOT 1
LOT 5	LOT 6	10		
LOT 8 1460'	LOT 7			
N 01°31'41" E 5161.61' (M)	NMSF-081239	OLIVER, W., ET AL		
NMNM-024158	LAT: 36°49.5135' N. (NAD 27) LONG: 108°05.3579' W. (NAD 27)			
LOT 9	1910'	JOHNSON, E.G., ET AL		
FD 3 1/4" BC BLM 1975	S 87°52'16" E 5425.52' (M)	FD 3 1/4" BC BLM 1975		

17 OPERATOR CERTIFICATION

I hereby certify that the information contained herein is true and complete to the best of my knowledge and belief

Patsy Clugston
Signature
Patsy Clugston
Printed Name
Sr. Regulatory Specialist
Title
11-3-04
Date

18 SURVEYOR CERTIFICATION

I hereby certify that the well location shown on this plat was plotted from field notes of actual surveys made by me or under my supervision, and that the same is true and correct to the best of my belief

OCTOBER 2004
Date of Survey
JOHN A. VUKONICH
NEW MEXICO
REGISTERED PROFESSIONAL SURVEYOR
14831
14827
Certificate Number

District I

1625 N. French Dr., Hobbs, NM 88240

District II

1301 W. Grand Ave., Artesia, NM 88210

District III

1000 Rio Brazos Rd., Aztec, NM 87410

District IV

1220 S. St. Francis Dr., Santa Fe, NM 87505

OIL CONSERVATION DIVISION

1220 South St. Francis Dr.

Santa Fe, NM 87505

WELL API NO.

30-039-

5. Indicate Type of Lease

STATE ☐

FEE ☐

6. State Oil & Gas Lease No.

NMSF081239

7. Lease Name or Unit Agreement Name

8. Well Number

Blanco 30-12 #100

9. OGRID Number

14538

10. Pool name or Wildcat

Basin Fruitland Coal

SUNDRY NOTICES AND REPORTS ON WELLS
(DO NOT USE THIS FORM FOR PROPOSALS TO DRILL OR TO DEEPEN OR PLUG BACK TO A DIFFERENT RESERVOIR. USE "APPLICATION FOR PERMIT" (FORM C-101) FOR SUCH PROPOSALS.)

1. Type of Well:

Oil Well ☐

Gas Well ☒

Other

2. Name of Operator

BURLINGTON RESOURCES OIL & GAS COMPANY LP

3. Address of Operator

3401 E. 30TH STREET, FARMINGTON, NM 87402

4. Well Location

Unit Letter K : 1910' feet from the South line and 1460' feet from the West line

Section 10 Township 30N Range 12W NMPM County San Juan

11. Elevation (Show whether DR, RKB, RT, GR, etc.)

5719' GL

Pit or Below-grade Tank Application

☐ or Closure ☐

Pit type

new drill

Depth to Groundwater

>50'

Distance from nearest fresh water well

>1000'

Distance from nearest surface water

<200'

Pit Liner Thickness:

12

mil

Below-Grade Tank:

Volume

bbls;

Construction Material

12. Check Appropriate Box to Indicate Nature of Notice, Report or Other Data

NOTICE OF INTENTION TO:

PERFORM REMEDIAL WORK ☐

TEMPORARILY ABANDON ☐

PULL OR ALTER CASING ☐

PLUG AND ABANDON ☐

CHANGE PLANS ☐

MULTIPLE COMPL ☐

SUBSEQUENT REPORT OF:

REMEDIAL WORK ☐

COMMENCE DRILLING OPNS. ☐

CASING/CEMENT JOB ☐

ALTERING CASING ☐

P AND A ☐

OTHER:

New Drill Pit

☒

OTHER:

☐

13. Describe proposed or completed operations. (Clearly state all pertinent details, and give pertinent dates, including estimated date of starting any proposed work). SEE RULE 1103. For Multiple Completions: Attach wellbore diagram of proposed completion or recompletion.

New Drill, Lined:

Burlington Resources proposes to construct a new drilling pit and an associated blow/flare pit. Based on Burlington's interpretation of the Ecosphere's risk ranking criteria, the new drilling pit will be a lined pit as detailed in Burlington's Revised Drilling / Workover Pit Construction / Operation Procedures dated November 11, 2004 on file at the NMOCD office. A portion of the blow/flare pit will be designed to manage fluids and that portion will be lined as per the risk ranking criteria. Burlington Resources anticipates closing these pits according to the Drilling / Workover Pit Closure Procedure dated August 2, 2004 on file at the NMOCD office

I hereby certify that the information above is true and complete to the best of my knowledge and belief. I further certify that any pit or below-grade tank has been/will be constructed or closed according to NMOCD guidelines ☐, a general permit ☒ or an (attached) alternative OCD-approved plan ☐.

SIGNATURE

Frances Bond

TITLE

Regulatory Specialist

DATE

11/22/2004

Type or print name

Frances Bond

E-mail address:

fbond@br-inc.com

Telephone No.

505-326-9518

For State Use Only

APPROVED BY

[Signature]

TITLE

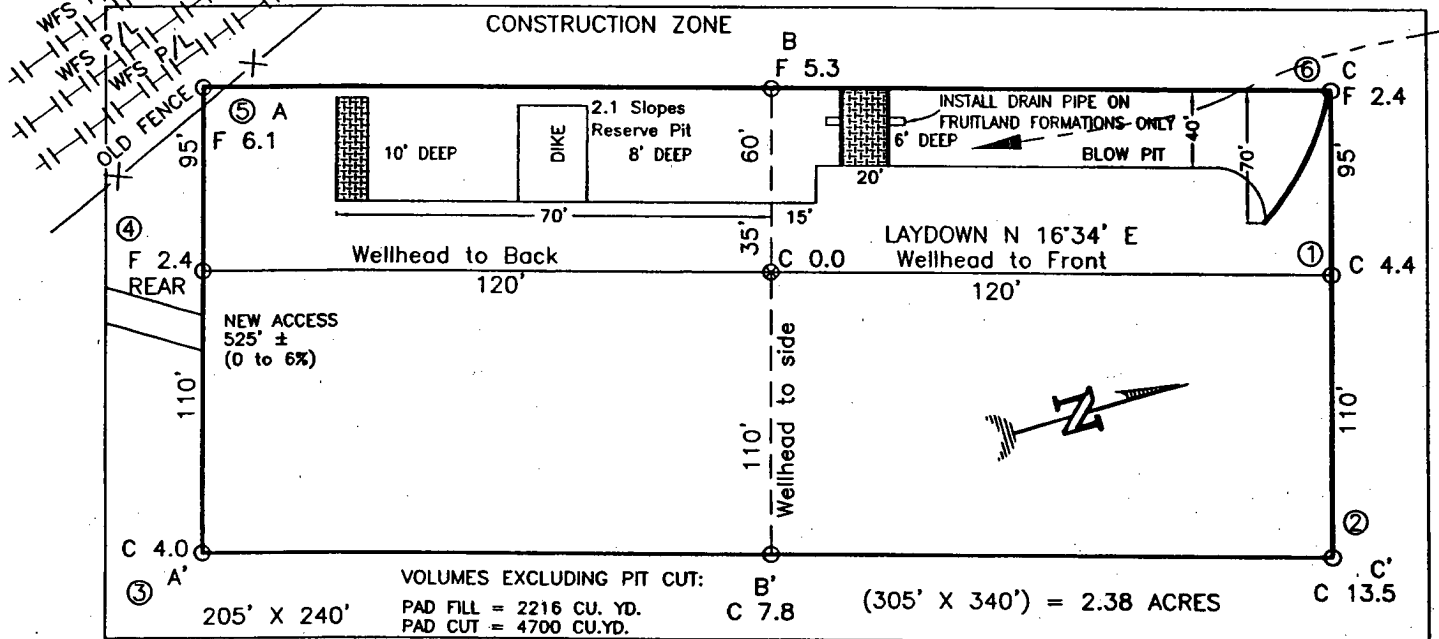
DEPUTY OIL & GAS INSPECTOR, DIST. 200

DATE

FEB 25 2005

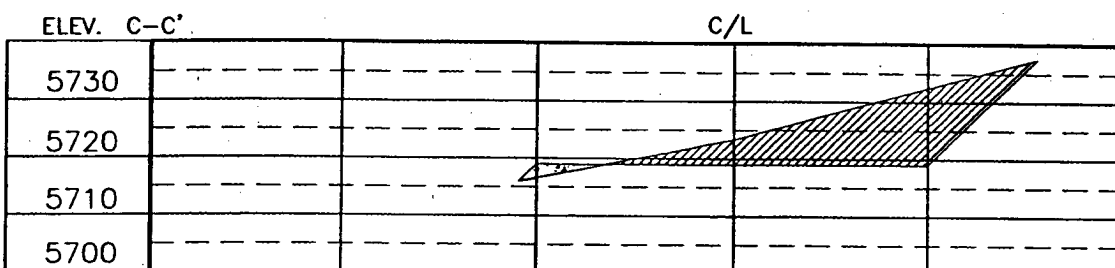
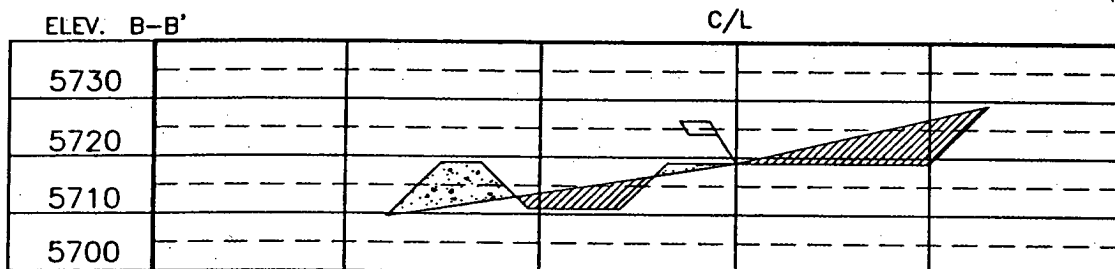
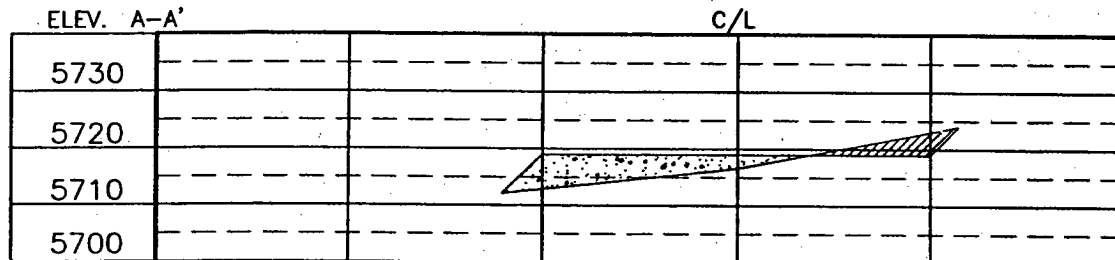
Conditions of Approval (if any):

BURLINGTON RESOURCES OIL & GAS COMPANY LP
 BLANCO 30-12 No. 100, 1910 FSL 1460 FWL
 SECTION 10, T-30-N, R-12-W, N.M.P.M., SAN JUAN COUNTY, NEW MEXICO
 GROUND ELEVATION: 5719, DATE: OCTOBER 4, 2004



RESERVE PIT DIKE: TO BE 8' ABOVE DEEP SIDE (OVERFLOW - 3' WIDE AND 1' ABOVE SHALLOW SIDE).
 BLOW PIT: OVERFLOW PIPE HALFWAY BETWEEN TOP AND BOTTOM AND TO EXTEND OVER PLASTIC LINER AND INTO BLOW PIT.

NOTE: DAGGETT ENTERPRISES, INC. IS NOT LIABLE FOR UNDERGROUND UTILITIES OR PIPELINES. NEW MEXICO ONE CALL TO BE NOTIFIED 48 HOURS PRIOR TO EXCAVATION OR CONSTRUCTION.



NOTE: CONTRACTOR SHOULD CALL ONE-CALL FOR LOCATION OF ANY MARKED OR UNMARKED BURIED PIPELINES OR CABLES ON WELL PAD AND OR ACCESS ROAD AT LEAST TWO (2) WORKING DAYS PRIOR TO CONSTRUCTION.

REVISION:	DATE:	REMOVED BY:
<p>Daggett Enterprises, Inc. Surveying and Oil Field Services P. O. Box 15068 • Farmington, NM 87401 Phone (505) 326-1772 • Fax (505) 326-8019 NEW MEXICO P.L.S. No. 14831 CDRLE: BR521CF8 DATE: 10/23/04</p>		
<p>DRWN BY: A.G. RCH: BR521</p>		

OPERATIONS PLAN

Well Name: Blanco 30-12 #100
Location: Unit K (NESW), 1910' FSL & 1460' FWL, Sec. 10, T30N, R12W
 San Juan County, New Mexico
 Latitude 36° 49.5135'N; Longitude 108° 05.3579'W
Formation: Basin Fruitland Coal
Elevation: 5719' GR

Formation:	Top	Bottom	Contents
Surface	San Jose	481'	
Ojo Alamo	481'	541'	aquifer
Kirtland	541'	1791'	gas
T/Fruitland	1791'	1988'	gas
B/Fruitland Coal	1988'	1998'	gas
Pictured Cliffs	1998'		
Total Depth	2198'		

Note: The Total Depth for this well is into the Pictured Cliffs interval, but currently only have plans to complete the Fruitland Coal interval. We could in the near future perforate/stimulate the Pictured Cliffs interval, but only would once Regulatory approval was asked for and received.

Logging Program: None

Mud Program:

<u>Interval</u>	<u>Type</u>	<u>Weight</u>	<u>Vis. Fluid Loss</u>
0- 120'	Spud /air/air mist	8.4-8.9	40-50 no control
120-2198'	Non-dispersed	8.4-9.5	30-60 no control

Casing Program:

<u>Hole Size</u>	<u>Depth Interval</u>	<u>Csg. Size</u>	<u>Wt.</u>	<u>Grade</u>
8 3/4"	0 - 120'	7"	20.0#	J-55
6 1/4"	0 - 2198'	4 1/2"	10.5#	J/K-55

Tubing Program:

0 - 2198'	2 3/8"	4.7#	J-55
-----------	--------	------	------

Float Equipment: 7" surface casing - guide shoe. Centralizers will be run in accordance with Onshore Order #2.

4 1/2" production casing - float shoe and float collar on bottom. Centralizers run every third joint above shoe to the base of the Ojo Alamo @ 541'. Two turbolizing type centralizers - one below and one into the base of the Ojo Alamo @ 541'. Standard centralizers thereafter every fourth joint up to the base of the surface pipe.

Wellhead Equipment: 7" x 4 1/2" x 2 3/8" x 11" 2000 psi xmas tree assembly.

January 4, 2005

Cementing:

7" surface casing pre-set drilled - cement with Type I, II cement with 20% flyash mixed at 14.5 ppg, 1.61 cu ft per sack yield. (Bring cement to surface). Wait on cement for 24 hours for pre-set holes before pressure testing or drilling out under the surface.

7" surface casing - Cement with 42 sx Type III cement with 0.25 pps Celloflake, 3% CaCl. (54 cu ft of slurry @ 1.28 yield). 200% excess, bring cement to surface. Wait on cement for 8 hrs for conventionally set holes before pressure testing or drilling out from under surface.

WOC until cement establishes 250 psi compressive strength prior to NU of BOPE.

4 1/2" production casing - Cement with 101 sx (215 cu ft of slurry @ 2.13 yield) Premium Lite with 3% calcium chloride, 5 pps LCM-1, and 1/4#/sack celloflake, 0.4% FL-52, & 0.4% SMS. Tail with 90 sacks (124 cu ft of slurry @ 1.38 yield) Type III cmt with 1% calcium chloride, 1/4#/sack celloflake and 0.2% FL-52. Total 339 cu ft - 50% excess to circulate to surface.

BOP and tests:

Surface to TD - 11" 2000 psi (minimum double gate BOP stack (Reference Figure #1 and #2). Prior to drilling out surface casing, test ~~rams~~ ^{JK} to 600 psi/30 min.
_{BOPE}

Completion - 6" 2000 psi (minimum) double gate BOP stack (Reference Figure #2). Prior to completion operations, test ~~rams~~ _{BOPE} and casing to 2000 psi/15 min.

From surface to TD - choke manifold (Reference Figure #3).

Pipe rams will be actuated at least once each day and blind rams actuated once each trip to test proper functioning. An upper kelly cock valve with handle and drill string safety valves to fit each drill string will be maintained and available on the rig floor.

Additional information:

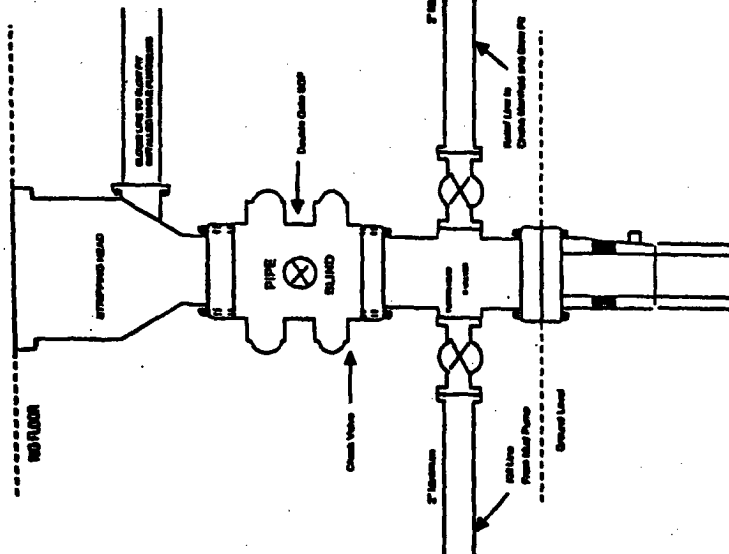
- * The Fruitland Coal formation will be completed.
- * Anticipated pore pressure for the Fruitland is between 600 - 700 psi.
- * This gas is dedicated.
- * The west half of the section is dedicated to this well.
- * New casing will be utilized.
- * Pipe movement (either rotation or reciprocation) will be done if hole conditions permit.

Robert B. Teller
Drilling Engineer

1-12-05
Date

BURLINGTON RESOURCES

Completion/Workover Rig
BOP Configuration
2,000 psi System

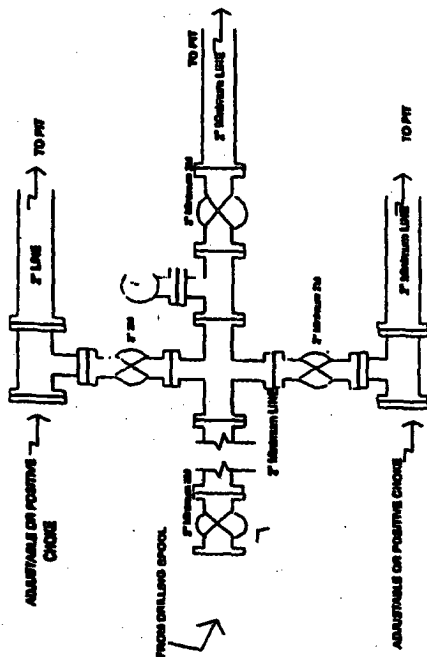


Minimum BOP Installation for all Completion/Workover Operations. 7-1/16" bore, 2000 psi minimum working pressure double gate BOP to be equipped with blind and pipe rams. A stripping head to be installed on the top of the BOP. All BOP equipment is 2000 psi working pressure or greater excluding 500 psi stripping head.

Figure #2

BURLINGTON RESOURCES

Drilling Rig
Choke Manifold Configuration
2000 psi System

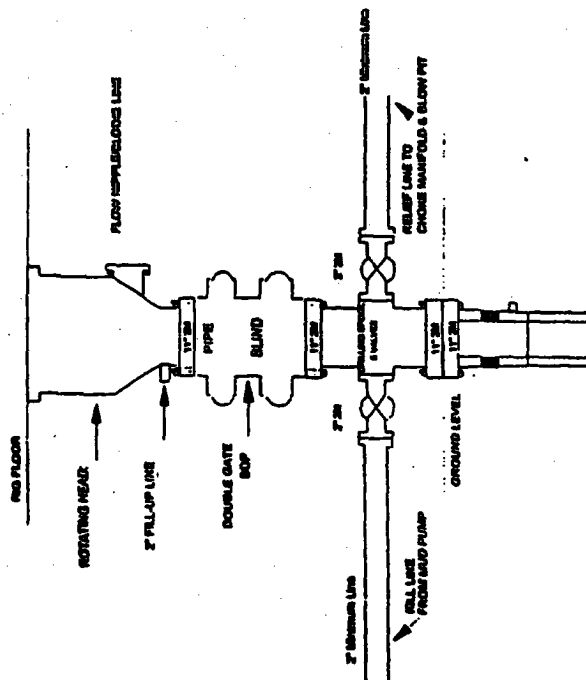


Choke manifold installation from Surface Casing Point to Total Depth. 2,000psi working pressure equipment with two chokes.

Figure #3

Burlington Resources

Drilling Rig
2000 psi System



BOP Installation from Surface Casing Point to Total Depth. 11" Bore 10" Nominal, 2000 psi working pressure double gate BOP to be equipped with blind rams and pipe rams. A 500 psi rotating head on top of ram preventers. All BOP equipment is 2,000 psi working pressure

Figure #1