

UNITED STATES
DEPARTMENT OF THE INTERIOR
BUREAU OF LAND MANAGEMENTFORM APPROVED
OMB NO. 1004-0135
Expires: November 30, 2000**SUNDRY NOTICES AND REPORTS ON WELLS**
Do not use this form for proposals to drill or to re-enter an abandoned well. Use form 3160-3 (APD) for such proposals.5. Lease Serial No.
NMSF080245

6. If Indian, Allottee or Tribe Name

7. If Unit or CA/Agreement, Name and/or No.

8. Well Name and No.
HAMNER 2A

9. API Well No.

10. Field and Pool, or Exploratory
BLANCO MV / BASIN DAKOTA

11. County or Parish, and State

SAN JUAN COUNTY, NM

SUBMIT IN TRIPLICATE - Other instructions on reverse side.

1. Type of Well

☐ Oil Well ☒ Gas Well ☐ Other

2. Name of Operator

CONOCOPHILLIPS COMPANY

Contact:

CHRIS GUSTARTIS

E-Mail: CHRISTINA.GUSTARTIS@CONOCO

3a. Address

P O BOX 2197 WL 6106
HOUSTON, TX 77252

3b. Phone No. (include area code)

Ph: 832.486.2463

4. Location of Well (Footage, Sec., T., R., M., or Survey Description)

Sec 28 T29N R9W NENW 0825FNL 1660FWL
36.70128 N Lat, 107.78662 W Lon

12. CHECK APPROPRIATE BOX(ES) TO INDICATE NATURE OF NOTICE, REPORT, OR OTHER DATA

TYPE OF SUBMISSION	TYPE OF ACTION			
<input type="checkbox"/> Notice of Intent	<input type="checkbox"/> Acidize	<input type="checkbox"/> Deepen	<input type="checkbox"/> Production (Start/Resume)	<input type="checkbox"/> Water Shut-Off
<input checked="" type="checkbox"/> Subsequent Report	<input type="checkbox"/> Alter Casing	<input type="checkbox"/> Fracture Treat	<input type="checkbox"/> Reclamation	<input type="checkbox"/> Well Integrity
<input type="checkbox"/> Final Abandonment Notice	<input type="checkbox"/> Casing Repair	<input type="checkbox"/> New Construction	<input type="checkbox"/> Recomplete	<input checked="" type="checkbox"/> Other
	<input type="checkbox"/> Change Plans	<input type="checkbox"/> Plug and Abandon	<input type="checkbox"/> Temporarily Abandon	Subsurface Commingl
	<input type="checkbox"/> Convert to Injection	<input type="checkbox"/> Plug Back	<input type="checkbox"/> Water Disposal	ng 2-2-05

13. Describe Proposed or Completed Operation (clearly state all pertinent details, including estimated starting date of any proposed work and approximate duration thereof. If the proposal is to deepen directionally or recompleat horizontally, give subsurface locations and measured and true vertical depths of all pertinent markers and zones. Attach the Bond under which the work will be performed or provide the Bond No. on file with BLM/BIA. Required subsequent reports shall be filed within 30 days following completion of the involved operations. If the operation results in a multiple completion or recompleat in a new interval, a Form 3160-4 shall be filed once testing has been completed. Final Abandonment Notices shall be filed only after all requirements, including reclamation, have been completed, and the operator has determined that the site is ready for final inspection.)

Tubing was pulled from this well and the well was converted from a dual completion to a downhole commingled well, producing from the Blanco Mesaverde and Basin Dakota. New 2.375" tubing is now landed @ 6515'. Also in reference to NMOCD RBDMS-CTP0436532358, successful casing integrity tests were conducted on 2/3/05 and 2/9/05. See attached daily summary report and attached charts.

DHE 1305AZ

14. I hereby certify that the foregoing is true and correct.

Electronic Submission #54242 verified by the BLM Well Information System
For CONOCOPHILLIPS COMPANY, sent to the Farmington
Committed to AFMSS for processing by MATTHEW HALBERT on 02/22/2005 (05MXH0339SE)

Name (Printed/Typed) CHRIS GUSTARTIS

Title AUTHORIZED REPRESENTATIVE

Signature (Electronic Submission)

Date 02/18/2005

THIS SPACE FOR FEDERAL OR STATE OFFICE USE

Approved By ACCEPTED	MATTHEW HALBERT Title PETROLEUM ENGINEER	Date 02/22/2005
Conditions of approval, if any, are attached. Approval of this notice does not warrant or certify that the applicant holds legal or equitable title to those rights in the subject lease which would entitle the applicant to conduct operations thereon.		Office Farmington

Title 18 U.S.C. Section 1001 and Title 43 U.S.C. Section 1212, make it a crime for any person knowingly and willfully to make to any department or agency of the United States any false, fictitious or fraudulent statements or representations as to any matter within its jurisdiction.

**** BLM REVISED ** BLM REVISED ** BLM REVISED ** BLM REVISED ** BLM REVISED ****

Daily Summary

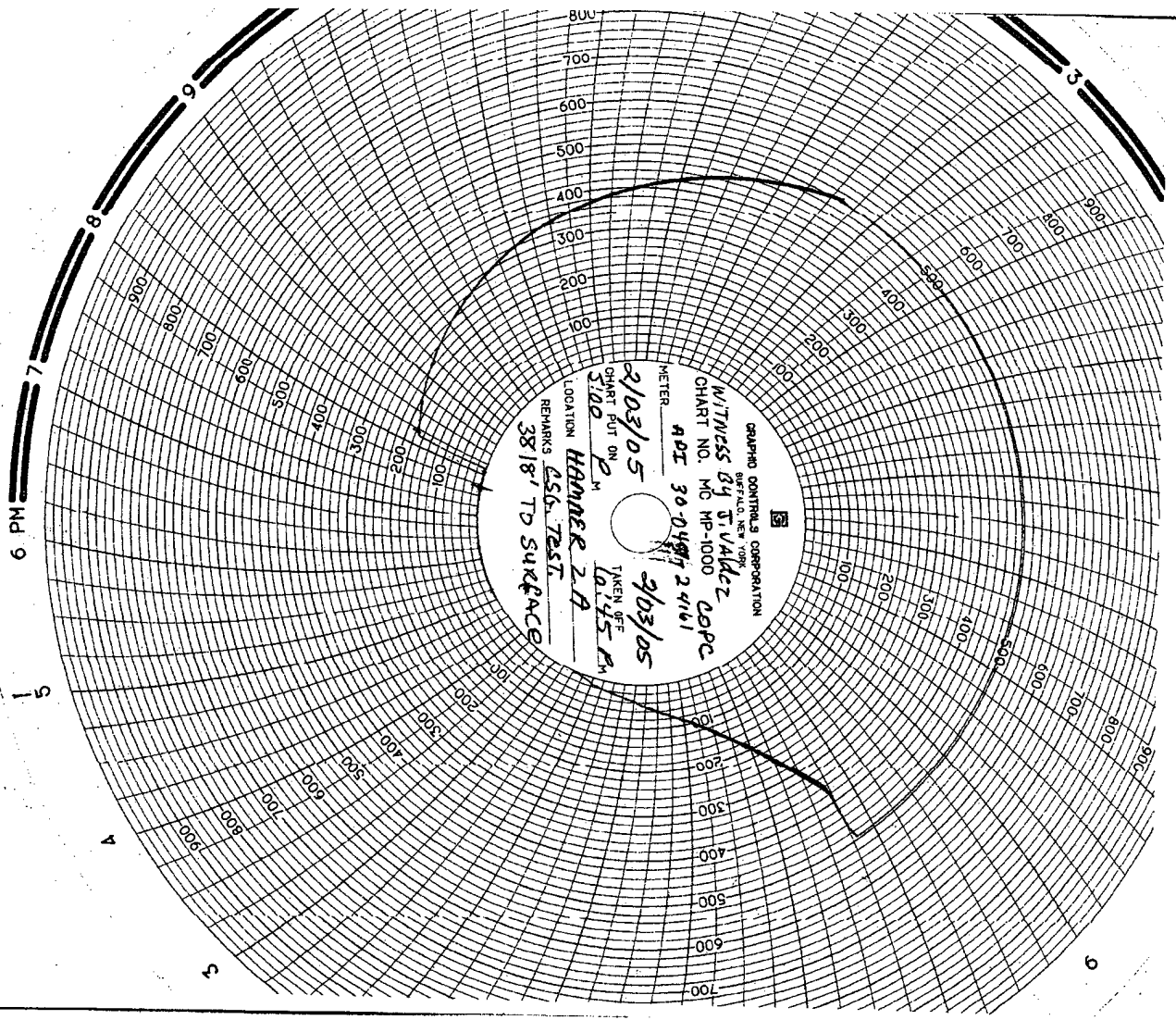
API/UWI 300452416100	County SAN JUAN	State/Province NEW MEXICO	Surface Legal Location NMMP-29N-9W-28-C	N/S Dist. (ft) 825.0	N/S Ref. N	E/W Dist. (ft) 1660.0	E/W Ref. W
Ground Elevation (ft) 5721.00	Spud Date 03/29/1980	Rig Release Date	Latitude (DMS) 36° 42' 4.608" N	Longitude (DMS) 107° 47' 11.76" W			

Start Date	Ops This Rot
01/20/2005 07:00	JSA, ROAD RIG TO NEXT LOCATION SPOT IN, SPOT IN EQUIPMENT, RU FLOW LINES. COULD NOT RIG UP PULLING UNIT, MISSING ONE ANCHOR. SDFN.
01/21/2005 07:00	JSA, SICP 240#, SITP 240#, SITP 240#. SET ONE ANCHOR AND TEST. RU PULLING UNIT, BLOW DOWN WELL, KILL TBG WITH 10 BBLS DOWN TBG, MV. 10 BBLS DOWN TBG DK, SET BPV IN LONG STRING HANGER. RDWH, C/O RAMS, RUBOP, RU OFFSET SPOOL. RU FLOOR, LATCH ON TO SHORT STRING, PU AND REMOVE HANGER, POOH WITH SHORT STRING, LAY DOWN ON TRAILER, 137 JOINTS OF 2 3/8" TBG WITH SLIM HOLE COLLARS. SHUT DOWN SECURE WELL SDFN.
01/22/2005 07:00	
01/23/2005 07:00	
01/24/2005 07:00	JSA, SICP 200#, BLOW WELL DOWN, KILL CSG WITH 15 BBLS, OF 2% KCL, RD OFF SET SPOOL, CHANGE OUT RAMS, LATCH ON TO LONG STRING, PU ABOUT 4', WORK TBG, PU UP TO 60,000#, TRY TO WORK FREE. NO LUCK. FIELD CALCULATION, SHOWS TBG STUCK AT PACKER, CALL OUT WIRELINE. KEEP WORK TBG, JSA WITH WIRELINE CREW, RU WIRELINE, RIH WITH FREE POINT, PUMP 30 BBLS BEHIND TOOL. FREEPOINT SHOWS TBG FREE TO PACKER. PACKER @6475'. POOH WITH TOOL, RIH WITH STRING SHOT, FIRED ACROSS SEAL ASSEMBLY IN PACKER. WORK TBG, DID NOT FREE UP. POOH WITH STRING SHOT, WORK TBG, DID NOT FREE UP. RIH WITH CHEMICAL CUTTER, PUMP 30 BBLS BEHIND, TAG UP AT 6472', TOP OF PACKER, TRY TO MOVE CUTTER WOULD NO GO UP OR DOWN, SHUT DOWN, LET EQUALIZE, TRY TO MOVE NO LUCK, WORK WIRELINE, TRY TO PULL OUT OF ROPE SOCKET. COULD NOT PULL OUT. SECURE WELL, LEFT WIRELINE RU, WILL CUT WIRE IN AM SDFN.
01/25/2005 07:00	HOLD SAFETY MEETING AND WRITE JSA. CHECK LOTO AND PRESSURE. SICP - 200 PSI. BLOW WELL DOWN TO FLOW BACK TANK. MAKE UP WIRELINE CUTTER (JIMMY'S SWABBING SERVICE). HOLD SAFETY MEETING AND WRITE JSA WITH ALL HANDS ON LOCATION (RIG CREW, WIRELINE SPECIALTIES AND JIMMY'S SWABBING SERVICE). LOAD TBG WITH APPROX 28 BBLS OF FLUID AND DROP WIRELINE CUTTER. WAIT 30 MIN AND WORK LINE AND TBG. WAIT AN ADDITIONAL 15 MIN AND DROP BAR TO DETONATE CUTTER. POOH WITH WIRELINE. LEFT APPROX 350' OF WIRELINE IN TBG. WORK TBG WHILE RE-HEADING WIRELINE. TIH WITH CHEMICAL CUTTER. SET DOWN ON SOMETHING SOLID @ 6100'. SET DOWN ON IT SEVERAL TIMES. OBSTRUCTION DID NOT MOVE. CUT OFF TBG @ 6080' (WIRELINE MEASUREMENT). POOH WITH WIRELINE AND RIG DOWN WIRELINE TRUCK. LAY DOWN TBG HANGER AND TOH STRAPPING TBG. STRAPPED OUT A TOTAL OF 6054.78'. LAYED DOWN BLAST JTS AND PUP JTS. RIG DOWN FLOOR, CHANGE OUT BOP AND RIG UP FLOOR. SECURE WELL AND LOCATION AND SDFN.
01/26/2005 07:00	HOLD SAFETY MEETING AND WRITE JSA. CHECK PRESSURE AND LOTO. SICP - 200 PSI. BLOW WELL DOWN TO FLOW BACK TANK. PICK UP OVERSHOT, JARS, 6 3-1/8" DCS, INTENSIFIER AND TIH WITH TBG. LATCH ONTO FISH AND JAR. NO MOVEMENT IN FISH. PICK UP POWER SWIVEL AND TRY TO ROTATE. DID NOT GET ANY TORQUE IN TBG. TOH. NO RECOVERY. SECURE WELL AND LOCATION AND SDFN.
01/27/2005 07:00	HOLD SAFETY MEETING AND WRITE JSA. CHECK LOTO AND PRESSURE. SICP - 210 PSI. WAIT ON EXTERNAL TBG CUTTER AND WASH PIPE. PICK UP CUTTER (3.85') WASH PIPE (148.88'), BUSHING (2.65'), JARS (8.46'), 6 3-1/8" DCS (178.30'), INTENSIFIER (8.60') XO SUB (1.80') AND TIH WITH TBG. WORK OVER FISH @ 6067' AND CUT OFF TBG @ 6212'. TOH AND LAY DOWN FISH (RECOVERED 145.64' OF 2-3/8" TBG). PICK UP WIRELINE SPEAR, JARS, DCS AND TIH. SECURE WELL AND LOCATION AND SDFN.
01/28/2005 07:30	HOLD SAFETY MEETING AND WRITE JSA. CHECK LOTO AND PRESSURE. SICP - 200 PSI. TIH WITH WIRLINE SPEAR. TAG @ 6055'. WORK WIRELINE AND TOH. RECOVER APPROX 375' OF WIRELINE. WAIT ON FULL OPEN OVERSHOT. MAKE UP OVERSHOT AND TIH. LATCH ONTO FISH @ 6212'. HOLD SAFETY MEETING AND WRITE JSA. RIG UP WIRELINE SPECIALTIES AND RUN CHEMICAL CUTTER. TAGGED @ 6457'. CUT OFF TBG @ 6445' (10' BELOW COLLAR). POH AND RIG DOWN WIRELINE. PULL 5 STDS OF TBG, DRAIN PUMP, SECURE WELL AND LOCTION AND SDFWE.
01/29/2005 18:00	
01/30/2005 18:00	
01/31/2005 07:30	JSA, SICP 240#, BLOW WELL DOWN, POOH WITH TBG, 96 STANDS AND ONE SINGLE, OUTSIDE CUTTER, AND FISH (6-FULL JOINTS AND TWO CUT OFFS, 222'), RIH WITH WASH PIPE SHOE, ONE JOINT OF WASH PIPE, X/O, JARS, 6-DRILL COLLARS, INTENSIFIER, AND TBG, 100 STANDS. TAG UP AT 6448'. RU POWER SWIVEL, RU EST RATE, UNLOAD WELL. CIR. 500#, UNLOADING OIL, C/O TO 6478'. CIR CLEAN, SHUT DOWN AIR, KILL TBG 5 BBLS, RD AIR, POOH WITHDTBG AND WASH PIPE, SECURE WELL, DRAIN UP, SDFN.
02/01/2005 07:30	ATTENDED KEY MONTHLY SAFETY MEETING, JSA, SICP 200#, BLOW WELL DOWN, RIH WITH WASH PIPE SHOE, 3- JOINTS OF WASH PIPE, JARS, 6- DRILL COLLARS, AND 99 STANDS OF TBG, TALLY IN, TAG UP AT 6451', TOP OF FISH, RU POWER SWIVEL, RU AIR EST RATE., 500# 12BBLS, MIST PER HOUR. C/O OFF 10' OF HARD FILL, TAG UP ON PACKER, MILL OUT AN CHASE DOWN WITH 4 JOINTS, POOH WITH 90 STANDS OF TBG, SECURE WELL DRAIN UP, SDFN.
02/02/2005 07:30	JSA, SICP 200#, BLOW WELL DOWN, KILL WELL 20 BBLS, POOH WITH 10 STANDS OF TBG, 6- DRILL COLLARS, JARS, 3- JOINTS OF WASH PIPE, LAY DOWN, RIH WITH OVERSHOT DRESS FOR BODY ON 2 3/8" TBG, JARS, 6-DRILL COLLARS, AND 103 STANDS OF TBG, TAG FISH AT 6609', WORK OVERSHOT LATCH FISH, PU STUCK, WORK JARS, WORK FISH LOOSE, POOH WITH TBG, 103 STANDS, AND BHA. AND FISH, ONLY SEAL ASSEMBLY WITH CHEMICAL CUTTER IN IT. LAY DOWN DRILL COLLARS, PU RIH WITH MILL AND 40 STANDS OF TBG. SECURE WELL, DRAIN UP, SDFN.

Daily Summary

API/UWI 300452416100	County SAN JUAN	State/Province NEW MEXICO	Surface Legal Location NMPM-29N-9W-28-C	N/S Dist. (ft) 825.0	N/S Ref. N	E/W Dist. (ft) 1660.0	E/W Ref. W
Ground Elevation (ft) 5721.00	Spud Date 03/29/1980	Rig Release Date	Latitude (DMS) 36° 42' 4.608" N	Longitude (DMS) 107° 47' 11.76" W			

Start Date	Ops This Rot
02/03/2005 07:30	JSA, BLOW WELL DOWN, RIH WITH MILL AN TBG , TAG UP AT 6695', RU AIR EST RATE @1050#, 12 BBLS MIST/HR, C/O TO PBTD 6708' , SHUT DOWN AIR, POOH WITH TBG AND MILL. RIH WITH RBP, 30 STANDS OF TBG , 7" PACKER AN TBG , TRY TO SET RBP, 6490', WOULD NOT SET, MOVE UP AND DOWN CSG PIPE, WOULD NOT SET. PU PACKER TO ,3818', SET AN PRESS UP ON CSG TO 500#, RAN CHART, HELD FOR 30 MINS, GOOD TEST, BLOW DOWN PRESS. SECURE WELL SDFN.
02/04/2005 07:30	JSA, SICP 200#, BLOW WELL DOWN, RIH WITH 10 STANDS OF TBG, RU POWER SWIVEL, TRY TO SET RBP WITH SWIVEL, STILL WOULD NOT SET, RD. SWIVEL, POOH WITH 72 STANDS OF TBG, 7" PACKER, 30 STANDS OF TBG AN RBP., RBP NOT WORKING. RIH WITH G-PLUG AND TBG 30 STANDS, 7" PACKER AND 72 STANDS OF TBG, SET G-PLUG AT 6490'. PU PACKER TO 4540'. SET, RU AIR, LOAD AND PRESS UP TO 500#, PRESS. NOT HOLDING, DROPS 100# IN TWO MINS, BLOW DOWN PRESS. WORK PACKER, PRESS. BACK UP. WOULD NOT HOLD, BLOW DOWN PRESS, POOH WITH ONE JOINT, RESET PACKER, PRESS. BACK UP TO 500#, STILL LEAKING OFF, BLOW DOWN, SECURE WELL SDFN
02/05/2005 07:30	
02/06/2005 07:30	
02/07/2005 07:30	JSA, SICP, 200#, BLOW WELL DOWN, POOH WITH TBG, 72 STANDS, KILL WELL 20 BBLS, PU AND REMOVE 7" PACKER. POOH WITH 30 STANDS, AND SETTING TOOL. RIH WITH RETRIEVING HEAD , PACKER FOR 4.5" CSG. AND 75 STANDS OF TBG., SET PACKER AT 4664', INSIDE LINER TOP. RU AIR AND PRESS UP TO 500#, WOULD NOT HOLD, BLOW DOWN, RD AIR. RELEASE PACKER AND RIH WITH 28 STANDS SET PACKER AT 6400'. RU AIR , PRESS UP TO 500#, WOULD NOT HOLD. BLOW DOWN PRESS., COULD NOT SET PLUG IN TBG, NO PROFILE. RELEASE PACKER AN POOH WITH TBG, INSPECTING FOR HOLE. SECURE WELL SDFN.
02/08/2005 07:30	JSA, SICP 200#, BLOW WELL DOWN, RIH WITH RETRIEVING HEAD, F-NIPPLE WITH F-PLUG IN IT, 102 STANDS OF TBG, RU AIR AND PRESS UP TO 500#, WOULD NOT HOLD, BLOW DOWN, RD AIR, POOH WITH 15 STANDS, RU AIR, PRESS TO 500 #, WOULD NOT HOLD, BLOW DOWN, RD AIR, POOH WITH 15 MORE STANDS, RU AIR, PRESS TO 500#, WOULD NOT HOLD. BLOW DOWN, RD AIR, POOH WITH 15 MORE STANDS, RU AIR, PRESS. TO 500# HELD SOLID. BLOW DOWN RD AIR, RIH WITH 8 STANDS, RU AIR, PRESS UP TO 500#, WOULD NOT HOLD, PU ONE JOINT, FOUND HOLE (40 STANDS ONE SINGLE- 2516') REPLACE JOINT, PRESS UP TO 500# HELD SOLID. BLOW DOWN, POOH WITH TBG, F- NIPPLE, AND RETRIEVING HEAD, RIH WITH 7" PACKER, AND 72 STANDS. SECURE WELL SDFN.,
02/09/2005 07:30	JSA, SICP 220# , BLOW WELL DOWN, RIH WITH 5 JOINTS OF TBG , TAG UP ON LINER TOP@4646', PU 10 ' , SET PACKER AND PRESS UP TO 500# HELD SOLID. BLOW DOWN PRESS, POOH WITH TWO JOINTS, SET PACKER AT 4574', RU AIR , PRESS UP TO 500#, HELD SOLID, LET STAND FOR 30 MINS, HELD SOLID, GOOD TEST, BLOW DOWN PRESS, RELEASE PACKER, POOH WITH TBG AND PACKER. RIH WITH RETRIEVING HEAD AND 104 STANDS OF TBG., TAG UP ON RBP, RU AIR, UNLOAD WELL, C/O TOP OF PLUG, SHUT DOWN AIR, LATCH PLUG AN RELEASE, POOH WITH TBG AND PLUG, SECURE WELL SDFN.
02/10/2005 07:30	JSA, SICP 250#, BLOW WELL DOWN, RIH WITH MULE SHOE /EXPENDABLE CHECK, F-NIPPLE (1.78"ID), WITH 209 JOINTS OF TBG., DRIFT IN, LAY DOWN TWO JOINTS, LAND WELL @ 6515', RDFLOOR, RUWH, PUMP OUT EXPENDABLE CHECK @900#, UNLOAD WELL. RIG DOWN MOVE OFF. LAST REPORT.



6 PM

9

4

3

9

