

UNITED STATES
DEPARTMENT OF THE INTERIOR
BUREAU OF LAND MANAGEMENT

RECEIVED

FORM APPROVED
OM B No 1004-0137
Expires: March 31, 2007

JUN 09 2011

SUNDRY NOTICES AND REPORTS ON WELLS

Do not use this form for proposals to drill or to re-enter an abandoned well. Use Form 3160-3 (APD) for such proposals.

SUBMIT IN TRIPLICATE- Other instructions on reverse side.

1. Type of Well <input checked="" type="checkbox"/> Oil Well <input type="checkbox"/> Gas Well <input type="checkbox"/> Other		5. Lease Serial No. Contract #68
2. Name of Operator Four Star Oil & Gas Co. c/o Chevron Midcontinent, L.P.		6. If Indian, Allottee or Tribe Name Jicarilla Apache
3a. Address 15 Smith Rd., Midland, TX 79705	3b. Phone No. (include area code) 432-561-8600	7. If Unit or CA/Agreement, Name and/or No
4. Location of Well (Footage, Sec., T, R, M., or Survey Description) UL H, Sec. 31-T25N-R5W 660' FEL & 1980' FNL		8. Well Name and No. Jicarilla B #8
		9. API Well No. 30-039-05741
		10. Field and Pool, or Exploratory Area Blanco P.C., South
		11. County or Parish, State Rio Arriba, NM

12. CHECK APPROPRIATE BOX(ES) TO INDICATE NATURE OF NOTICE, REPORT, OR OTHER DATA

TYPE OF SUBMISSION	TYPE OF ACTION			
<input checked="" type="checkbox"/> Notice of Intent	<input type="checkbox"/> Acidize	<input type="checkbox"/> Deepen	<input type="checkbox"/> Production (Start/Resume)	<input type="checkbox"/> Water Shut-Off
<input type="checkbox"/> Subsequent Report	<input type="checkbox"/> Alter Casing	<input type="checkbox"/> Fracture Treat	<input type="checkbox"/> Reclamation	<input type="checkbox"/> Well Integrity
<input type="checkbox"/> Final Abandonment Notice	<input type="checkbox"/> Casing Repair	<input type="checkbox"/> New Construction	<input type="checkbox"/> Recomplete	<input type="checkbox"/> Other
	<input type="checkbox"/> Change Plans	<input checked="" type="checkbox"/> Plug and Abandon	<input type="checkbox"/> Temporarily Abandon	
	<input type="checkbox"/> Convert to Injection	<input type="checkbox"/> Plug Back	<input type="checkbox"/> Water Disposal	

13. Describe Proposed or Completed Operation (clearly state all pertinent details, including estimated starting date of any proposed work and approximate duration thereof. If the proposal is to deepen directionally or recompleat horizontally, give subsurface locations and measured and true vertical depths of all pertinent markers and zones. Attach the Bond under which the work will be performed or provide the Bond No. on file with BLM/BIA. Required subsequent reports shall be filed within 30 days following completion of the involved operations. If the operation results in a multiple completion or recompleat in a new interval, a Form 3160-4 shall be filed once testing has been completed. Final Abandonment Notices shall be filed only after all requirements, including reclamation, have been completed, and the operator has determined that the site is ready for final inspection.)

1. Notify BLM and NMOCD 24 hrs prior to MI and RU.
- *2. RIH squeeze 90sx plug of class "H" cement from 2634'-1980' (perfs/Pictured Cliffs/Fruitland/Kirtland/Ojo Almo). WOC&TAG.
3. Displace hole w/MLF, 9.5# Brine w/25# gel P/BBL.
4. Spot 25sx plug of class "H" cement from 1500'-1390'. (old squeeze perfs)
5. Perf 4 holes at 700', sqz 275sx, plug from 700'-surface (Nacimiento/shoe/Fr.Wtr./surface) Verify TOC.
If unable to squeeze, spot cement over Nacimiento and attempt to squeeze shoe plug and same for Fr. Wtr and surface plugs.
Verify any deviation from procedure with BLM and NMOCD
6. Install dry hole marker.

* Adjust Step 2 plug to from 2634' to 1860'.

14. I hereby certify that the foregoing is true and correct Name (Printed/Typed) M. Lee Roark		Title Agent for Chevron USA, Inc.
Signature <i>M. Lee Roark</i>		Date 06/08/2011

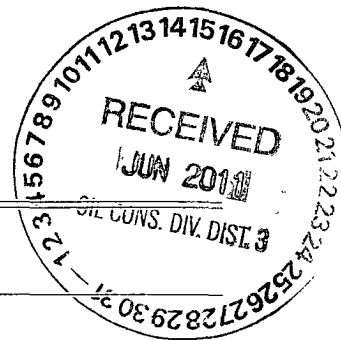
THIS SPACE FOR FEDERAL OR STATE OFFICE USE

Approved by Original Signed: Stephen Mason	Title	Date JUN 14 2011
Conditions of approval, if any, are attached. Approval of this notice does not warrant or certify that the applicant holds legal or equitable title to those rights in the subject lease which would entitle the applicant to conduct operations thereon.	Office	

Title 18 USC Section 1001 and Title 43 USC Section 1212, make it a crime for any person knowingly and willfully to make to any department or agency of the United States any false, fictitious or fraudulent statements or representations as to any matter within its jurisdiction.

(Instructions on page 2)

NMOCD 4



PLUGGING & ABANDONMENT WORKSHEET (2 STRING CSNG)

OPERATOR Four Star Oil & Gas Co. / Chevron Midcontinent, L.P.
 LEASENAME Jicarilla B

SECT 31 TWN 25N RNG 5W
 FROM 1980 NSL 660 EWL
 TD: 6225 FORMATION @ TD
 PBD: FORMATION @ PBD

	SIZE	SET @	TOC	TOC DETERMINED BY
SURFACE	10 3/4	338	surface	circulated
INTMED 1				
INTMED 2				
PROD	5 1/2	6225	5499/1980	Temperature
	SIZE	TOP	BOT	TOC DETERMINED BY
LINER 1				
LINER 2				
	CUT & PULL @			TOP - BOTTOM
INTMED 1			PIERCE	-
INTMED 2			OPENHOLE	-
PROD				

***REQUIRED PLUGS DISTRICT I**

PLUG	TYPE	BACKS	DEPTH
PLUG	PLUG	CMNT	
EXAMPLE			
PLUG #1	OH	35 SXS	6400'
PLUG #2	SHOE	50 SXS	5350'-5450'
PLUG #3	CIRP/35'		4800'
PLUG #4	CIRP	25 SXS	4800'
PLUG #5	STUB	50 SXS	3600'-3700'
PLUG #6	RETNR SCZ	200 SXS	400'
PLUG #7	SURF	10 SXS	0-10'
PLUG #8	P.C.	90s	2634'/1980
PLUG #9	Frailand		
PLUG #10	Kirtland		
PLUG #11	Ojo Alamo		
PLUG #12	okl pths	25s	1500'-1390'
PLUG #13	Nacim. v. 275s		700'-surface
PLUG #14	shoe		
PLUG #15	Fr. wfr.		
PLUG #16	surface		
PLUG #17			
PLUG #18			
PLUG #19			
PLUG #20			
PLUG #21			
PLUG #22			
PLUG #23			
PLUG #24			
PLUG #25			
PLUG #26			
PLUG #27			
PLUG #28			
PLUG #29			
PLUG #30			
PLUG #31			
PLUG #32			
PLUG #33			
PLUG #34			
PLUG #35			
PLUG #36			
PLUG #37			
PLUG #38			
PLUG #39			
PLUG #40			
PLUG #41			
PLUG #42			
PLUG #43			
PLUG #44			
PLUG #45			
PLUG #46			
PLUG #47			
PLUG #48			
PLUG #49			
PLUG #50			
PLUG #51			
PLUG #52			
PLUG #53			
PLUG #54			
PLUG #55			
PLUG #56			
PLUG #57			
PLUG #58			
PLUG #59			
PLUG #60			
PLUG #61			
PLUG #62			
PLUG #63			
PLUG #64			
PLUG #65			
PLUG #66			
PLUG #67			
PLUG #68			
PLUG #69			
PLUG #70			
PLUG #71			
PLUG #72			
PLUG #73			
PLUG #74			
PLUG #75			
PLUG #76			
PLUG #77			
PLUG #78			
PLUG #79			
PLUG #80			
PLUG #81			
PLUG #82			
PLUG #83			
PLUG #84			
PLUG #85			
PLUG #86			
PLUG #87			
PLUG #88			
PLUG #89			
PLUG #90			
PLUG #91			
PLUG #92			
PLUG #93			
PLUG #94			
PLUG #95			
PLUG #96			
PLUG #97			
PLUG #98			
PLUG #99			
PLUG #100			

10 3/4"
 @ 338'
 TOC surface

MLF

MLF

5 1/2"
 @ 6225'
 TOC 5499'

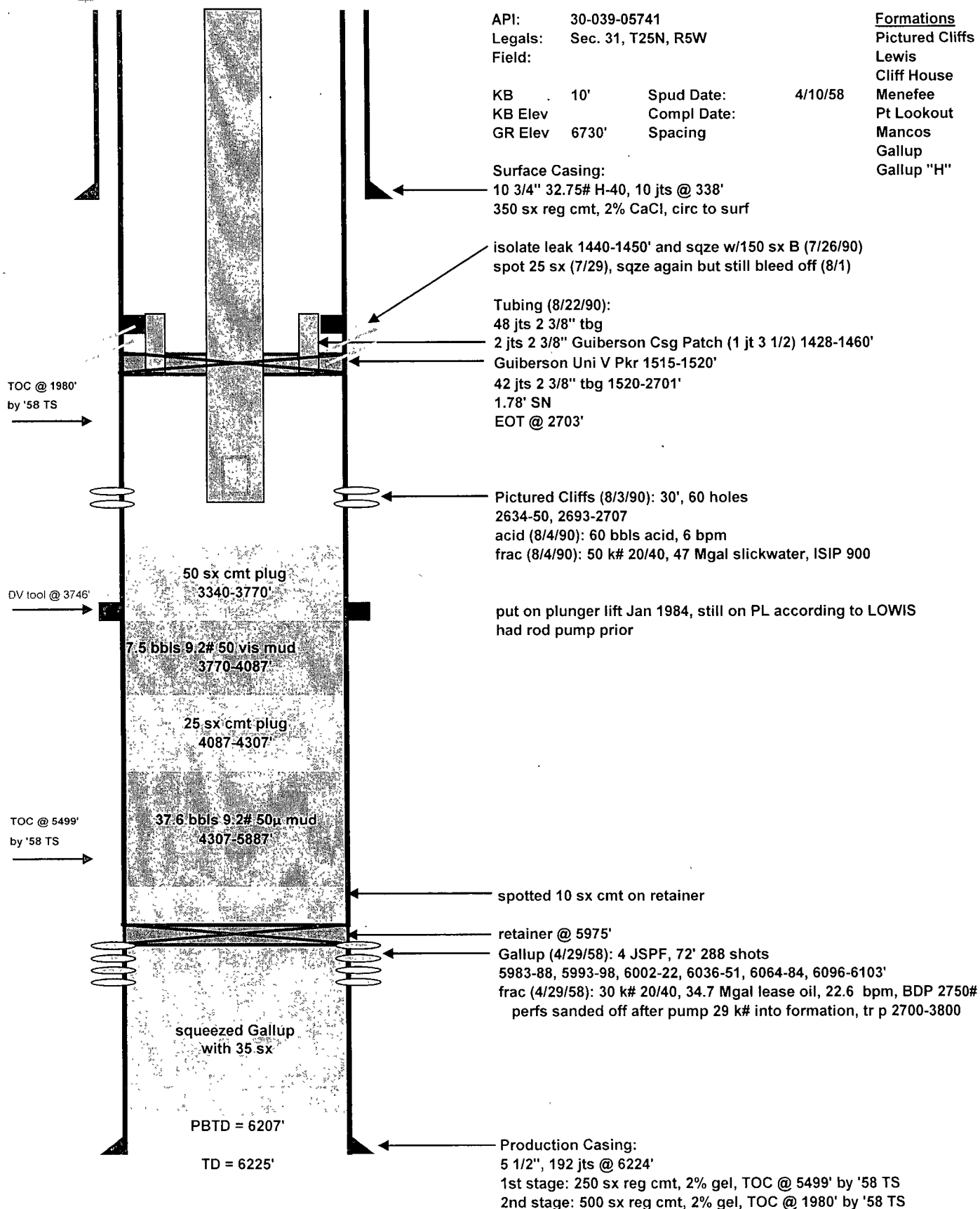
1980'

DV tool @ 3746

TD 6225



Jicarilla B8
Rio Arriba County, New Mexico
Current Well Schematic as of August 25, 2010



Prepared by: Jason Chow
Date: 8/26/2010

Revised by:
Date:

**UNITED STATES DEPARTMENT OF THE INTERIOR
BUREAU OF LAND MANAGEMENT
FARMINGTON DISTRICT OFFICE
1235 LA PLATA HIGHWAY
FARMINGTON, NEW MEXICO 87401**

Attachment to notice of
Intention to Abandon:

Re: Permanent Abandonment
Well: 8 Jicarilla B

CONDITIONS OF APPROVAL

1. Plugging operations authorized are subject to the attached "General Requirements for Permanent Abandonment of Wells on Federal and Indian Lease."
2. Farmington Office is to be notified at least 24 hours before the plugging operations commence (505) 599-8907.
3. The following modifications to your plugging program are to be made:
 - a) Place the Nacimiento/Surface plug from 749' to surface inside and outside the 5 ½" casing.

You are also required to place cement excesses per 4.2 and 4.4 of the attached General Requirements.

Office Hours: 7:45 a.m. to 4:30 p.m.