

Submit 3 Copies To Appropriate District Office
 District I
 1625 N French Dr , Hobbs, NM 88240
 District II
 1301 W Grand Ave , Artesia, NM 88210
 District III
 1000 Rio Brazos Rd , Aztec, NM 87410
 District IV
 1220 S St Francis Dr , Santa Fe, NM 87505

State of New Mexico
 Energy, Minerals and Natural Resources

Form C-103
 May 27, 2004

OIL CONSERVATION DIVISION
 1220 South St. Francis Dr.
 Santa Fe, NM 87505

WELL API NO 30-045-34156
5 Indicate Type of Lease STATE <input checked="" type="checkbox"/> FEE <input type="checkbox"/>
6. State Oil & Gas Lease No. E-504
7 Lease Name or Unit Agreement Name Rosa Unit
8. Well Number 029C
9. OGRID Number 120782
10. Pool name or Wildcat BLANCO MV/BASIN DK

SUNDRY NOTICES AND REPORTS ON WELLS
 (DO NOT USE THIS FORM FOR PROPOSALS TO DRILL OR TO DEEPEN OR PLUG BACK TO A DIFFERENT RESERVOIR USE "APPLICATION FOR PERMIT" (FORM C-101) FOR SUCH PROPOSALS)

1. Type of Well Oil Well Gas Well Other

2. Name of Operator
WILLIAMS PRODUCTION COMPANY, LLC

3. Address of Operator
721 SOUTH MAIN AZTEC, NM 87410

4. Well Location
 Unit Letter O 990 feet from the S line and 2310 feet from the E line
 Section 32 Township 32N Range 06W NMPM County SAN JUAN

11 Elevation (Show whether DR, RKB, RT, GR, etc)
6343

Pit or Below-grade Tank Application or Closure

Pit type _____ Depth to Groundwater _____ Distance from nearest fresh water well _____ Distance from nearest surface water _____

Pit Liner Thickness: _____ mil Below-Grade Tank: Volume _____ bbls; Construction Material _____

12. Check Appropriate Box to Indicate Nature of Notice, Report or Other Data

NOTICE OF INTENTION TO:
 PERFORM REMEDIAL WORK PLUG AND ABANDON
 TEMPORARILY ABANDON CHANGE PLANS
 PULL OR ALTER CASING MULTIPLE COMPL

SUBSEQUENT REPORT OF:
 REMEDIAL WORK ALTERING CASING
 COMMENCE DRILLING OPNS P AND A
 CASING/CEMENT JOB

OTHER. REQUEST FOR EXTENSION

OTHER. Multiple Zone Completion

Williams Production Company, LLC hereby requests authority to drill this as a Mesa Verde/Dakota dual as per attached plat and operations plan



I hereby certify that the information above is true and complete to the best of my knowledge and belief. I further certify that any pit or below-grade tank has been/will be constructed or closed according to NMOCD guidelines , a general permit or an (attached) alternative OCD-approved plan .

SIGNATURE Larry Higgins TITLE PERMIT SUPER DATE 6/1/11

Type or print name Larry Higgins E-mail address: larry.higgins@williams.com Telephone No. 505-634-4208

For State Use Only
 APPROVED BY: [Signature] TITLE _____ DATE JUN 20 2011
 Deputy Oil & Gas Inspector,
 District #3

Conditions of Approval (if any) _____

District I
1625 N. French Dr., Hobbs, NM 88240

District II
1301 W Grand Avenue, Artesia, NM 88210

District III
1000 Rio Brazos Rd., Aztec, NM 87410

District IV
1220 S St. Francis Dr., Santa Fe, NM 87505

State of New Mexico
Energy, Minerals & Natural Resources Department

OIL CONSERVATION DIVISION
1220 South St. Francis Dr.
Santa Fe, NM 87505

Form C-102
Revised October 12, 2005
Instructions on back
Submit to Appropriate District Office
State Lease - 4 Copies
Fee Lease - 3 Copies

AMENDED REPORT

WELL LOCATION AND ACREAGE DEDICATION PLAT

1 API Number 30-045-34156		2 Pool Code 72319 / 71599		3 Pool Name BLANCO MESAVERDE / BASIN DAKOTA	
4 Property Code 17033		5 Property Name ROSA UNIT			6 Well Number 29C
7 OGRID No 120782		8 Operator Name WILLIAMS PRODUCTION COMPANY			9 Elevation 6343'

10 Surface Location

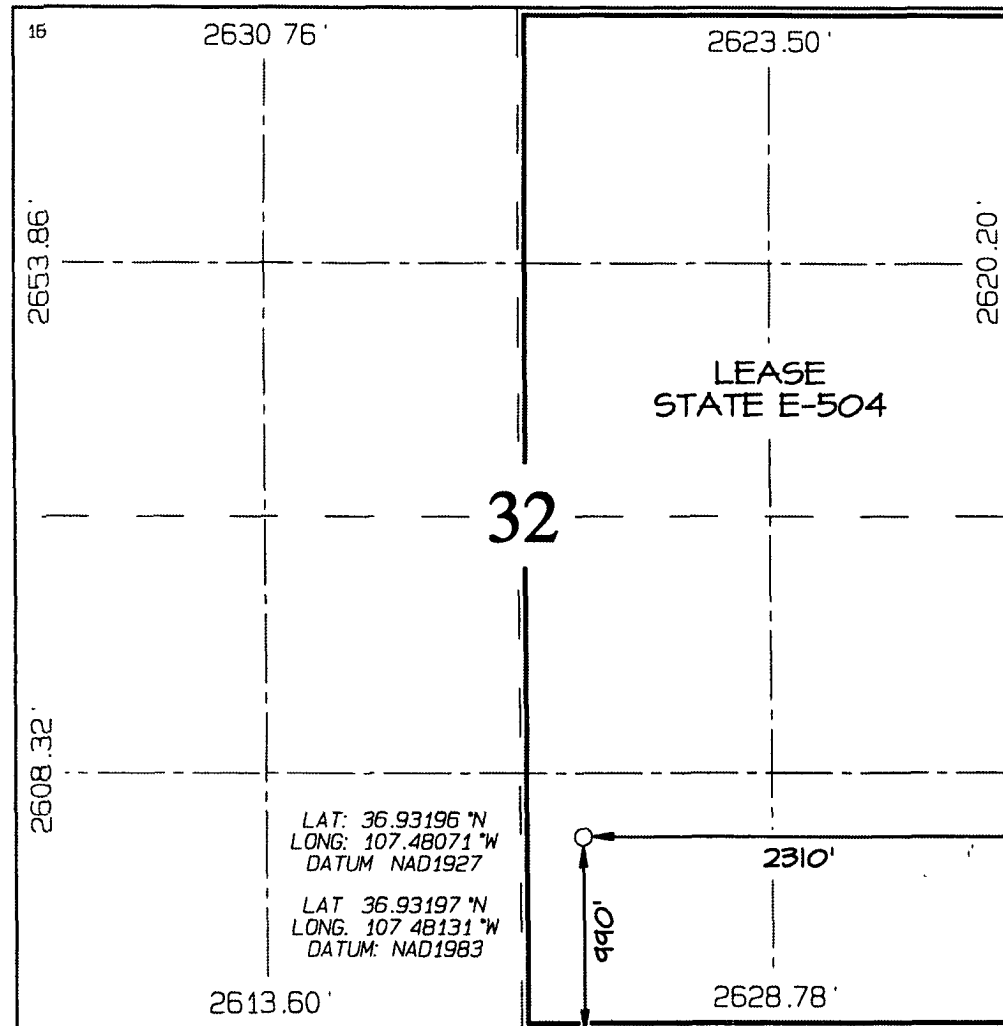
UL or lot no	Section	Township	Range	Lot Idn	Feet from the	North/South line	Feet from the	East/West line	County
0	32	32N	6W		990	SOUTH	2310	EAST	SAN JUAN

11 Bottom Hole Location If Different From Surface

UL or lot no	Section	Township	Range	Lot Idn	Feet from the	North/South line	Feet from the	East/West line	County

12 Dedicated Acres 320.0 Acres - E/2					13 Joint or Infill	14 Consolidation Code	15 Order No.		
---	--	--	--	--	--------------------	-----------------------	--------------	--	--

NO ALLOWABLE WILL BE ASSIGNED TO THIS COMPLETION UNTIL ALL INTERESTS HAVE BEEN CONSOLIDATED OR A NON-STANDARD UNIT HAS BEEN APPROVED BY THE DIVISION



17 OPERATOR CERTIFICATION

I hereby certify that the information contained herein is true and complete to the best of my knowledge and belief, and that this organization either owns a working interest or unleased mineral interest in the land including the proposed bottom-hole location or has a right to drill this well at this location pursuant to a contract with an owner of such a mineral or working interest, or to a voluntary pooling agreement or a compulsory pooling order heretofore entered by the division

Larry Higgins 6-1-11
Signature Date
LARRY HIGGINS
Printed Name

18 SURVEYOR CERTIFICATION

I hereby certify that the well location shown on this plat was plotted from field notes of actual surveys made by me or under my supervision, and that the same is true and correct to the best of my belief
Date Revised: MAY 10, 2011
Date of Survey: MAY 16, 2006
Signature and Seal of Professional Surveyor



JASON C. EDWARDS
Certificate Number 15269



WILLIAMS PRODUCTION COMPANY

Operations Plan

(Note: This procedure will be adjusted on site based upon actual conditions)

DATE: 3/15/2011 **FIELD:** Basin DK/ BlancoMV

WELL NAME: Rosa Unit #29C **SURFACE:** State

BH LOCATION: SWSE Sec 32-32N-6W **MINERALS:** State
San Juan, NM

ELEVATION: 6,343' GR **LEASE #** E-504

MEASURED DEPTH: 8,102'

I. GEOLOGY: Surface formation - San Jose

A. FORMATION TOPS: (KB)

Name	TVD	Name	TVD
Ojo Alamo	2,257	Point Lookout	5,577
Kirtland	2,387	Mancos	5,902
Fruitland	2,857	Gallup	6,892
Pictured Cliffs	3,087	Greenhorn	7,627
Lewis	3,392	Graneros	7,667
Cliff House	5,302	Dakota	7,802
Menefee	5,352	Morrison	8,052
		TD	8,102

B. MUD LOGGING PROGRAM: Mudlogger on location from intermediate csg to TD. Mud logger to pick TD.

C. LOGGING PROGRAM: HRI/Temp/SDL/DSN from intermediate casing to TD

D. NATURAL GAUGES: Gauge any noticeable increases in gas flow Record all gauges in Tour book and on morning reports

II. DRILLING

A. MUD PROGRAM: Clear water with benex to 7" casing point. Convert to a LSND mud to log and run pipe Treat for lost circulation as necessary. Obtain 100% returns prior to cementing Notify Engineering of any mud losses. Use air w/Air Hammer from 7" csg to TD.

B. BOP TESTING: While drill pipe is in use, the pipe rams and the blind rams will be function tested once each trip The anticipated reservoir is expected to be less than 1300 psi, so the BOPE will be tested to **250 psi (Low) for 5 minutes and 1500 psi (High) for 10 minutes** Utilize a BOPE Testing Unit with a recording chart and appropriate test plug for testing The drum brakes will be inspected and tested each tour **All tests and inspections will be recorded in the tour book as to time and results.**

III. MATERIALS

A. CASING PROGRAM:

<u>CASING TYPE</u>	<u>OH SIZE (IN)</u>	<u>DEPTH (MD) (FT)</u>	<u>CASING SIZE (IN)</u>	<u>WEIGHT(LB)</u>	<u>GRADE</u>
Surface	12 1/4	300	9 5/8	36	K-55
Intermediate	8 3/4	3,562	7	23	K-55
Longstring	6 1/4	8,102	4 1/2	11 6	P-110

B. FLOAT EQUIPMENT:

1. SURFACE CASING 9-5/8" notched regular pattern guide shoe. Run (1) standard centralizer on each of the bottom (4) joints of Surface Casing.
2. INTERMEDIATE CASING 7" cement nose guide shoe with a self-fill insert float. Place float collar one joint above the shoe Install (1) Turbulent centralizer on each of the bottom (3) joints and one standard centralizer every (3) joints to 2,500 ft. Run (1) Turbulent centralizer at 2,700 ft., 2,500 ft , 2,300ft., 2,000ft., 1,500 ft , and 1,000 ft (**NTL-FRA 90-1**).
3. PRODUCTION LINER / CASING: 4-1/2" whirler type cement nose guide shoe with a latch collar on top of 20' bottom joint Place marker joint above 5,400'. Place centralizers as needed across selected production intervals.

C. CEMENTING:

(Note: Volumes may be adjusted onsite due to actual conditions)

1. SURFACE: Slurry 290sx (521 cu.ft.) of "Type III" + 2% Cal-Seal 60 + ¼ # of poly-e-flake/sk + 0.3% Versaset + 2% Econolite + 6% Salt (Yield = 1.796 cu.ft./sk, Weight = 13 5 #/gal). The 100% excess should circulate cement to the surface. WOC 12 hours. Test csg to 1500psi.
2. INTERMEDIATE: Lead - 550 sx (1498 cu.ft.) of "EXTENDACEM" + 5 #/sk pheno-seal + 5% Cal-Seal 60 (Yield = 2.723 cu.ft./sk, Weight = 11.5 #/gal.). Tail - 100 sx (117.8cu ft) of Premium cement + 0.125 #/sk Poly-E-Flake, (Yield = 1.178 cu.ft./sk, Weight = 15.6#/gal.) Total volume = 1615 cu.ft. Bump Plug to 1,500 psi Notify engineering if cement is not circulated to surface. WOC 12 hours
3. PRODUCTION CASING: 10 bbl Gelled Water spacer Cement. 610 sx (853 ft³) of "FRACCEM" + 0.8% Halad-9 + 0.1% CFR-3 + 5 #/sk Gilsonite + 0.125 #/sk Poly-E-Flake + 0.15% HR-800. (Yield =1.398 ft³/sk, Weight = 13.1 #/gal.). Displace cement at a minimum of 8 BPM Total volume (853) ft³. WOC 12 hours.

IV. IV COMPLETION**A. CBL**

1. Run Cement Bond Log across all intervals to be perforated and find Top of Cement behind all casing strings if cement not circulated to surface..

B. PRESSURE TEST


- 1 Pressure test 4-1/2" casing to 6000 psi max, hold at 1500 psi for 30 minutes.

C. STIMULATION

1. Stimulate Dakota with approximately 5000# 100 mesh sand and 120,000# Ottawa Sand in slick water.
2. Isolate Dakota with a RBP.
3. Stimulate Point Lookout with approximately 40,000# 20/40 Ottawa sand in slick water.
4. Isolate Point Lookout with a RBP.
5. Perforate the Menefee/Cliff House as determined from the open hole logs.
6. Stimulate with approximately 40,000# 20/40 Ottawa sand in slick water.
7. Test each zone before removing bridge plugs.

D. RUNNING TUBING

1. Production Tubing: Run 2-3/8", 4.7#, J-55, EUE tubing with a SN (1.91" ID) on top of bottom joint. Land tubing approximately 25' above the bottom Point Lookout perforation


1-02 Gary Sizemore
Sr. Drilling Engineer